



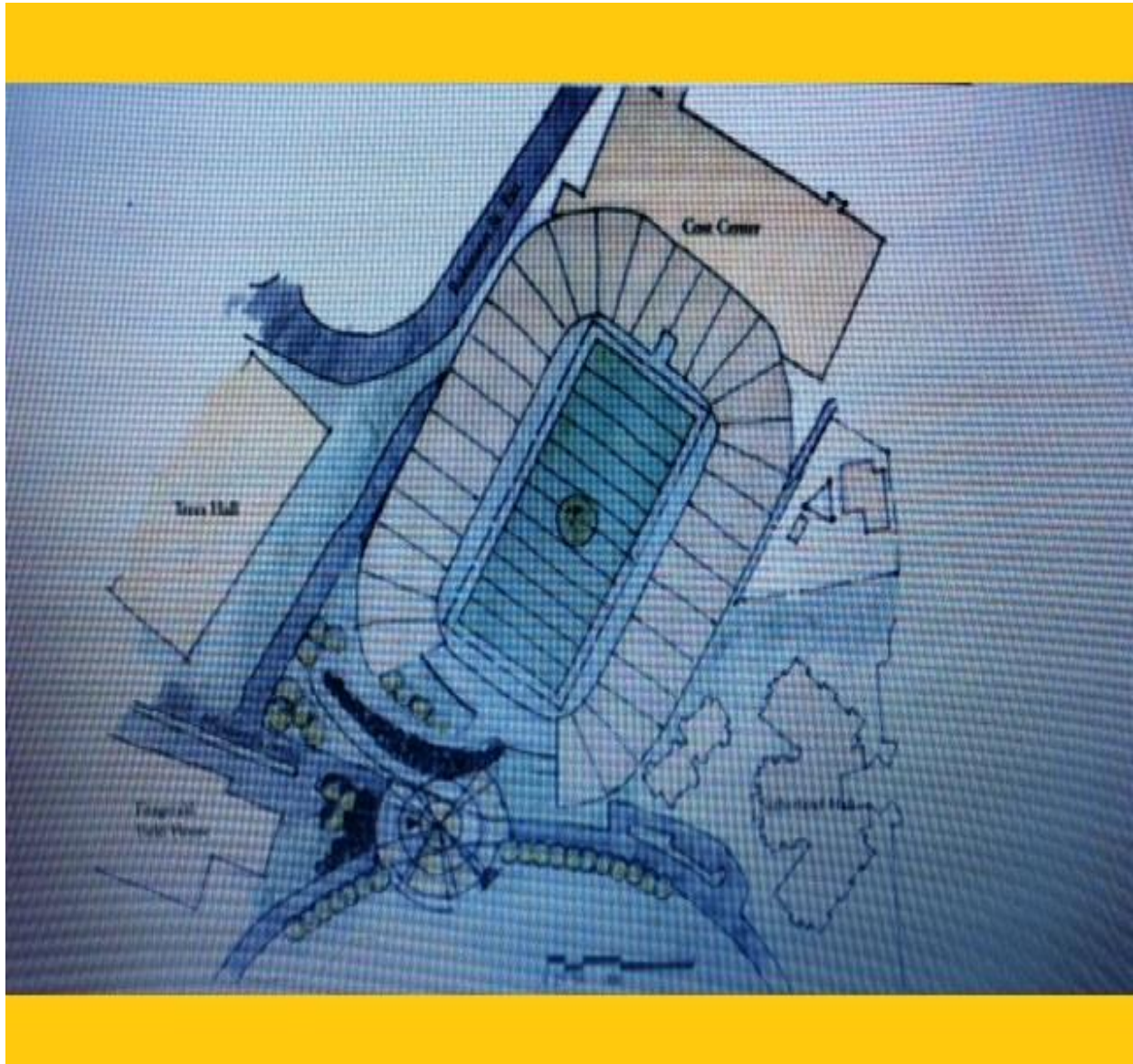
New Pitt Stadium

The Conceptual Design for **The New Pitt Stadium** in Oakland, Pennsylvania

DeFiore & Associates, Inc.
An Urban Planning &
Governmental Relations Firm

p. 484-268-7017
f. 610-820-0375

[defiorelccc@gmail.com]
[defiore14@yahoo.com]



GOAL STATEMENT:

The legacy of a great university is determined by the ongoing impact that the university plays and maintains in the lives of its students, graduates and their families. The interlocking civic culture and pride that our school esteems within us is why we are always Pitt. The vibrant urban campus life of our youth and the current facilities that we share have become the steel base of our families, friends, fellow alumni, The City of Pittsburgh and beyond. Nothing embodies this more than the football “game day” atmosphere and camaraderie found on our Oakland campus. Nothing means that more to us than Pitt Stadium. With that determined goal, we are building **THE NEW PITT STADIUM**. Hail to Pitt!



CURRENT ATHLETIC FACILITIES FOOTPRINT:

While our Pitt Athletic Teams are thriving in the ACC, nothing can be more polar opposite in terms of the physical condition and layout of our athletic facilities. While there are indeed excellent individual facilities that include the Cost Athletic Center and the Petersen Sports Complex and Center, the lack of a well thought out and planned facilities footprint has wasted the tremendous urban space for Pitt Athletics “Up on the Hill”. This situation has unfortunately laid the groundwork for our potential decline in athletics in the future.

As we know, College Football is the most financial successful element of any Athletic Department in America. It provides the economic base from which all other sports radiate from monetarily. Pitt’s Athletic Future will be determined by it. The cohesiveness of College Football and campus life is undeniable. The continuity of millions of people connected to a university is determined by the interconnecting facilities found well situated in the middle of campus. As many other unversities have discovered, the great enthusiasm for a school is pumped through the lives of our students and alumni in the heart of a campus. We aren’t just going to a game. We are going to our school, and the economic multipliers and our dollars will come with us. It is Pitt’s cultural and economic future.

In this cyber and information age, if we are only planning to connect with each other through invisible air waves, we need to be forewarned that the vibrancy of any city or university is the physical interaction of its people. From Bloomfield to the Strip District or Downtown to Hazelwood, as Pericles, the first great Mayor of Ancient Athens stated centuries ago, “All things good flow into the city.” And all things good flow directly to Pitt.

To this end, we are determined to create an urban space to serve as the home of Pitt Athletics for many generations to come. The first step is to build a new college football / multipurpose stadium on the Oakland Campus of The University of Pittsburgh. All other goals will emanate and be accomplished from the heart of this stadium. **The New Pitt Stadium.**

CURRENT ATHLETIC FACILITIES FOOTPRINT:

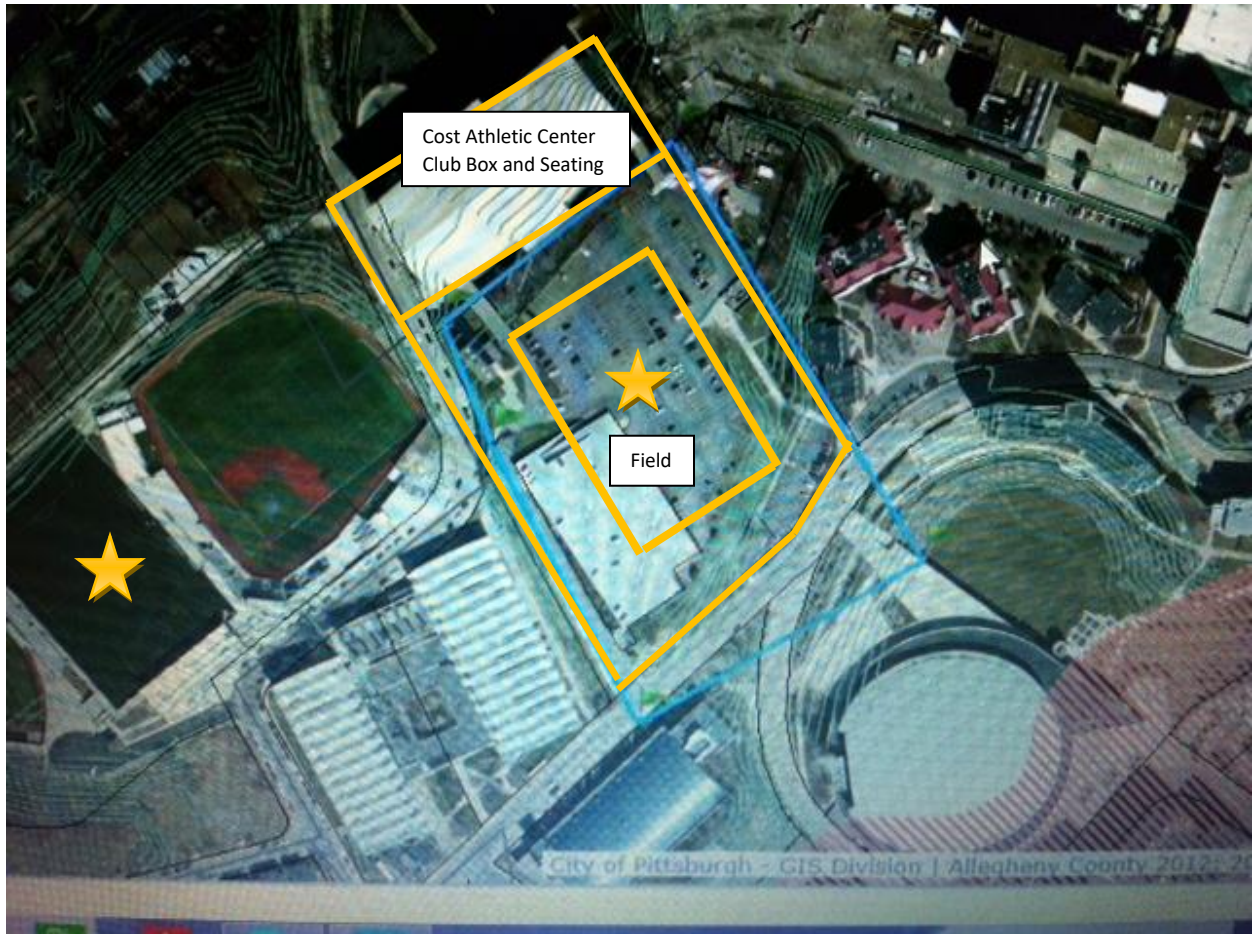


The Athletics Facilities Footprint (outlined in yellow) is not only haphazard, but it completely wastes/ruins the great urban space presented in this plan located at The University of Pittsburgh - Oakland Campus.

THE URBAN DEVELOPMENT SOLUTION:



The parcels of land in this photo (27-N-95-0-2 and 27-N-120) are the development plan parcels for **The New Pitt Stadium**. They are both owned by the university. **The New Pitt Stadium** will serve as the core axle upon which all other Pitt athletic facilities will “wheel spoke” out from in a radial geometric form. **The New Pitt Stadium** is the heart of the new Pitt Athletic Footprint. Numerous other universities use this same development concept plan most notably The University of Cincinnati / Nippert Stadium and Athletic Complex.

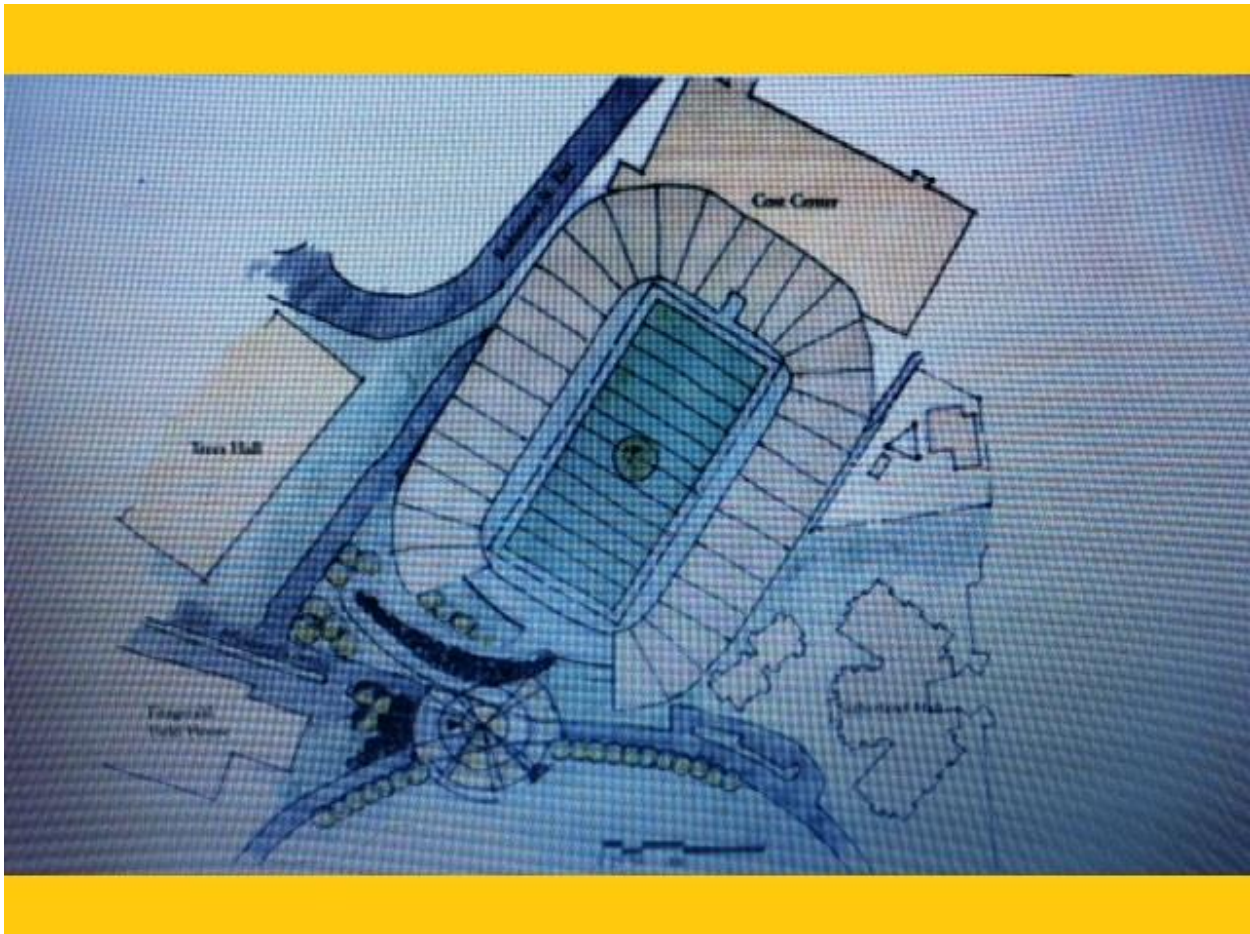


Using the same demensions of the Ambrose Urbanic Soccer Field at The Petersen Sports Complex (size of field identified with stars), The New Pitt Stadium Field and Stadium fits very comfortably within the paramenters of the OC Lot property as documented by the GSPIA Stadium Development Plan. With Club Seating development built above the Cost Athletic Center and with a bowl shaped stadium with potential second tier seating above the original bowl, The New Pitt Stadium easily will accommodate 50,000 plus attendees per athletic contest or other use. (Light Blue line illustrates extra potential development area for stadium)

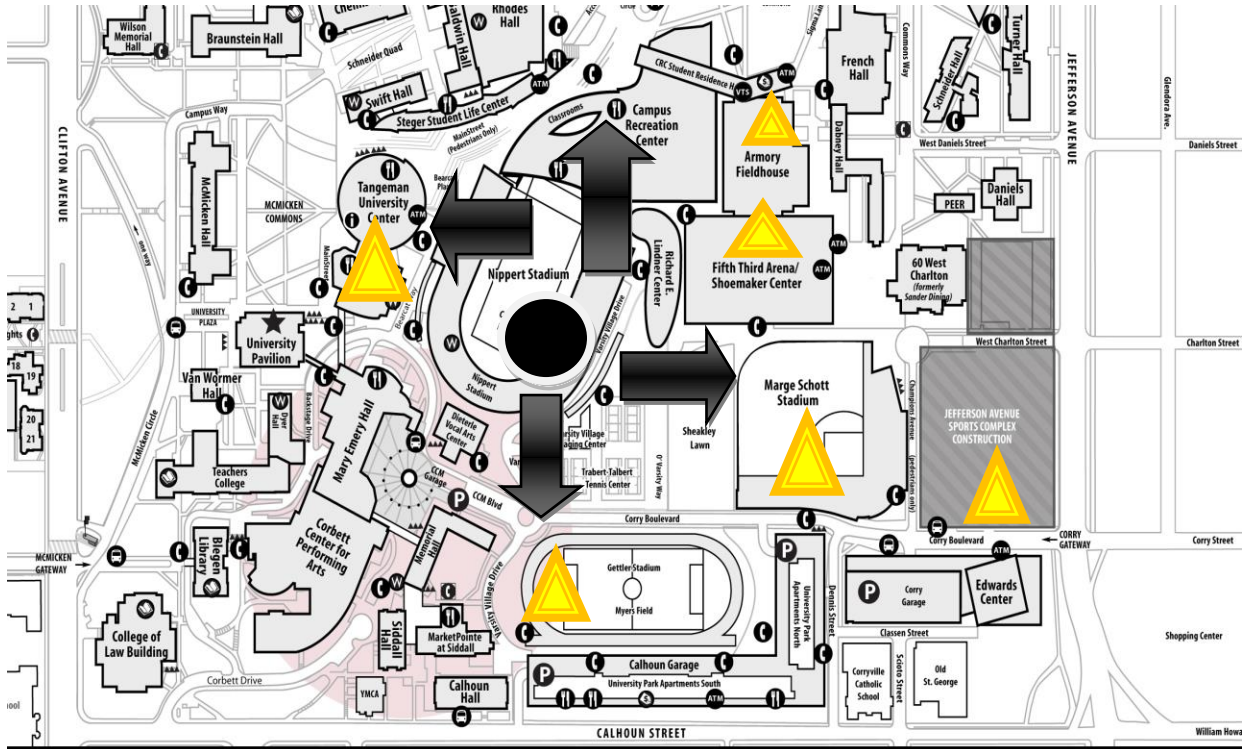


The New Pitt Stadium has the unbridled potential to fit anywhere into the parcels in the photos presented. This is one of many designs.





Some years ago, The University of Pittsburgh created an architectural rendering of The New Pitt Stadium. The GSPIA School created a feasibility plan using this rendering to prove convincingly that a stadium will thrive on this very site. Unfortunately, under the leadership at the time, priorities were placed elsewhere. The drawing above is smaller than this current plan proposes, however new architectural drawings are being made to accommodate the 21st Century needs for Pitt's Athletic Facilities Footprint.



The Athletic Facility Footprint / University of Cincinnati as shown above uses the Nippert Stadium as the core axle to the spoke wheel (black arrows) flow of development/use to the other notable athletic & student facilities on the map (yellow triangles). The conceptual idea for The University of Pittsburgh is on the next page.

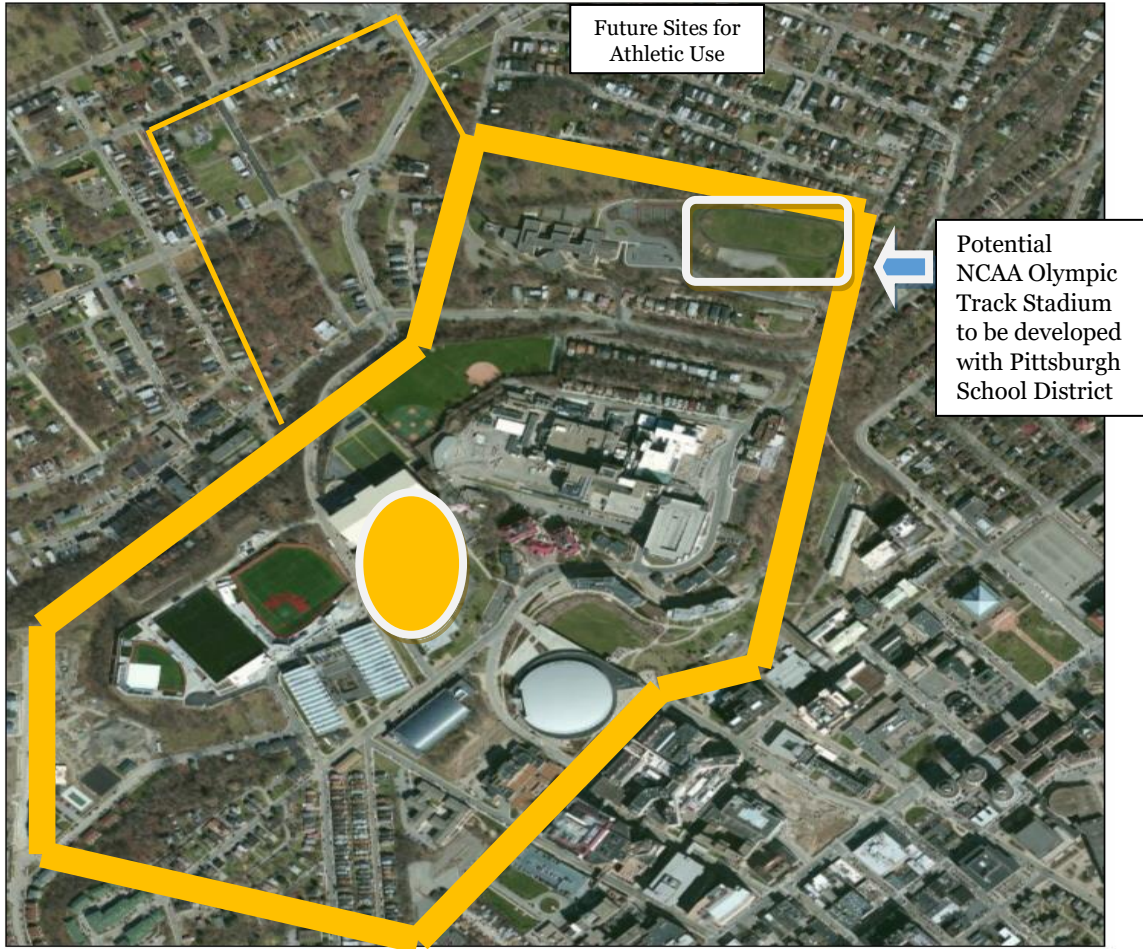


The New Pitt Stadium

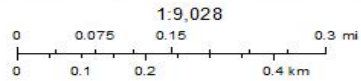


The New Pitt Stadium will be interwoven to every existing and future athletic facility. The axle upon which all Pitt Athletics will thrive. The above map mirrors the development concept on the previous page. The next pages illustrate the future potential.





January 14, 2015



Source: Esri, DigitalGlobe, GeoEye, Earthstar Geographics, CNES/Airbus DS, USDA, USGS, AEI, Getmapping, Aerogrid, IGN, IGP, swisstopo, and the GIS User Community

mjhoma

As Pitt grows in the future decades, the entire athletics footprint above may very well include all of the area outlined in yellow. The potential for the entire University of Pittsburgh could include research facilities, classroom halls, dormitories and hospitals.



THE LOCATION OF THE NEW PITT STADIUM

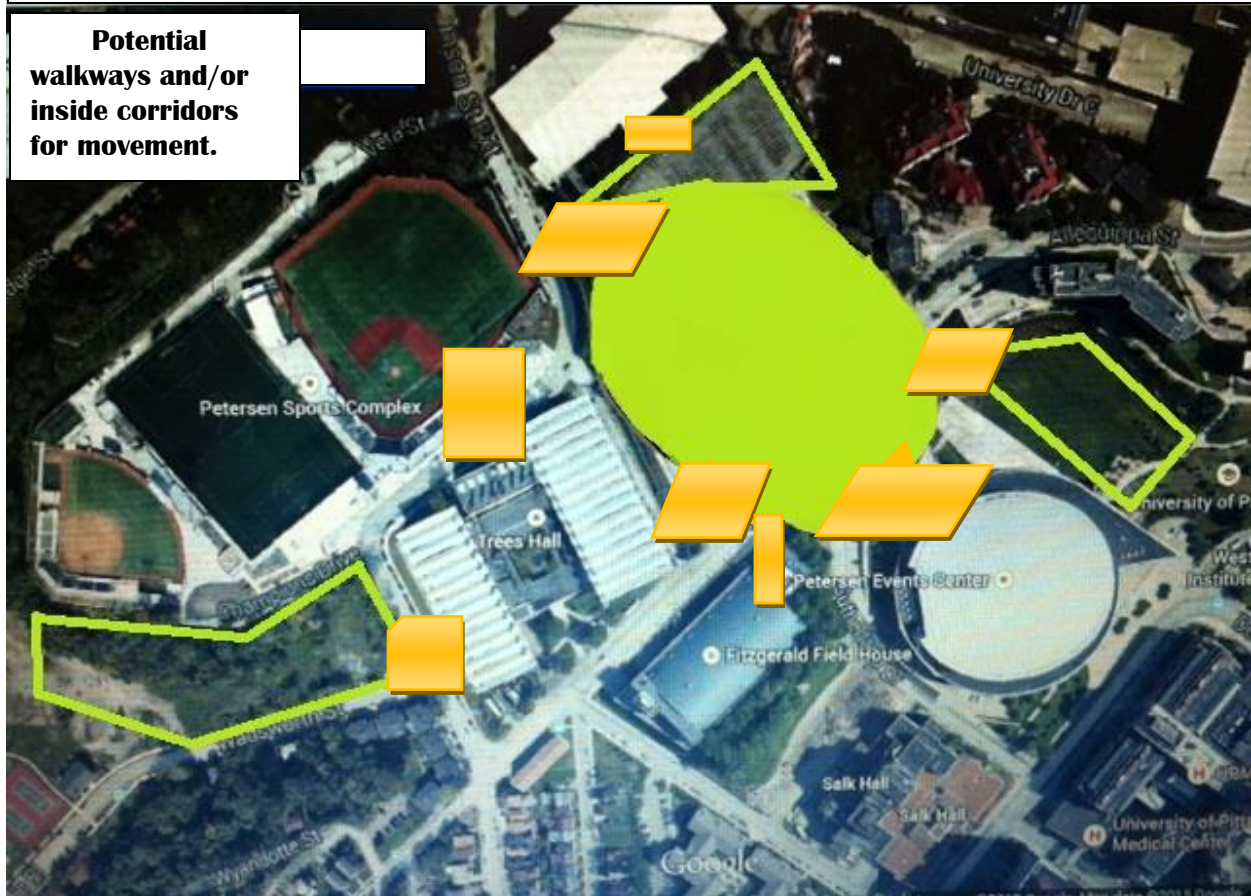


When the future decades arrive, Pitt Athletics will be well situated to expand and grow with the above outlined areas above serving as its core. The yellow outlined areas will be the second phase of development after **The New Pitt Stadium** is built. These areas are the future of all of our Olympic sports. Eventually, every athletic facility in the above map will be interlocked. The next page illustrates this future flow plan.



THE LOCATION OF NEW PITT STADIUM

Potential
walkways and/or
inside corridors
for movement.



The yellow geometric figures above show the completely connected Pitt Athletic Facilities both present and future. It is within this designed heart / axle of **The New Pitt Stadium** Development Plan that the new urban athletic complex will be used by the entire University of Pittsburgh.



THE NEW PITT STADIUM

Architectural design of **New Pitt Stadium** will be based off a concrete base and bowl shaped stadium. There are many, many design ideas for this stadium. It will not simply be the “cut out of a mountain” old Pitt Stadium. The financial costs to that are prohibitive. In keeping with tradition and Pitt Football history, the grand oval designed stadium is the overwhelming choice.



Above is a general rendering of the concrete base the will anchor **The New Pitt Stadium**. With steel columns and brackets, the entire stadium will be built with this base and will overhang the parcel lines, streets and walkways with street closings and easements from The City of Pittsburgh. The following page illustrates the stadium seating. Two design models for **The New Pitt Stadium** are 1) the “Buildup Model” and / or 2) the “Build Above Model”.



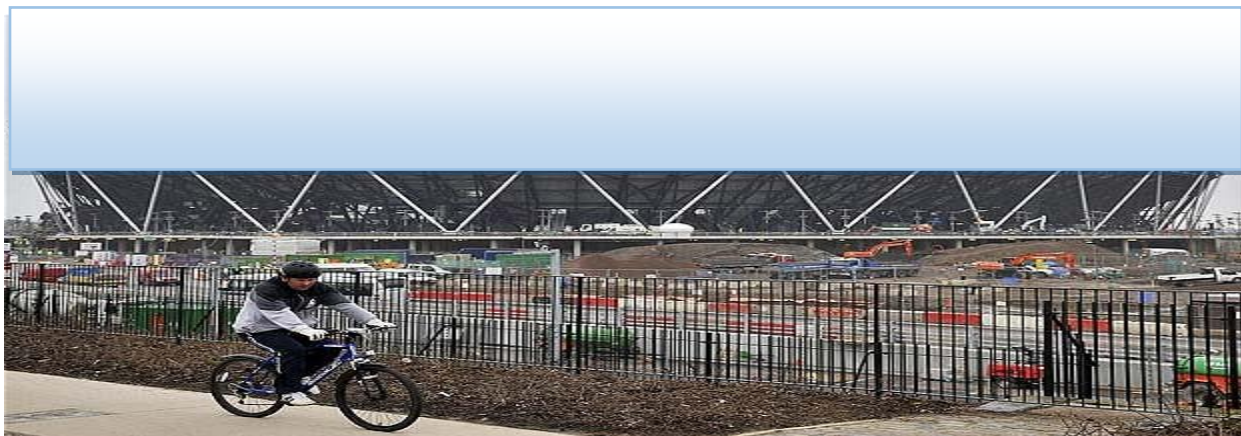
The above drawing illustrates the “buildup” model from a concrete base rather than the Old Pitt Stadium of “digging into the hill” concept. The issue is to lower the cost to build. **The New Pitt Stadium** may be able to provide covered seating as seen on the super box / club side of the field or open seating on the near side of this drawing (in yellow above).

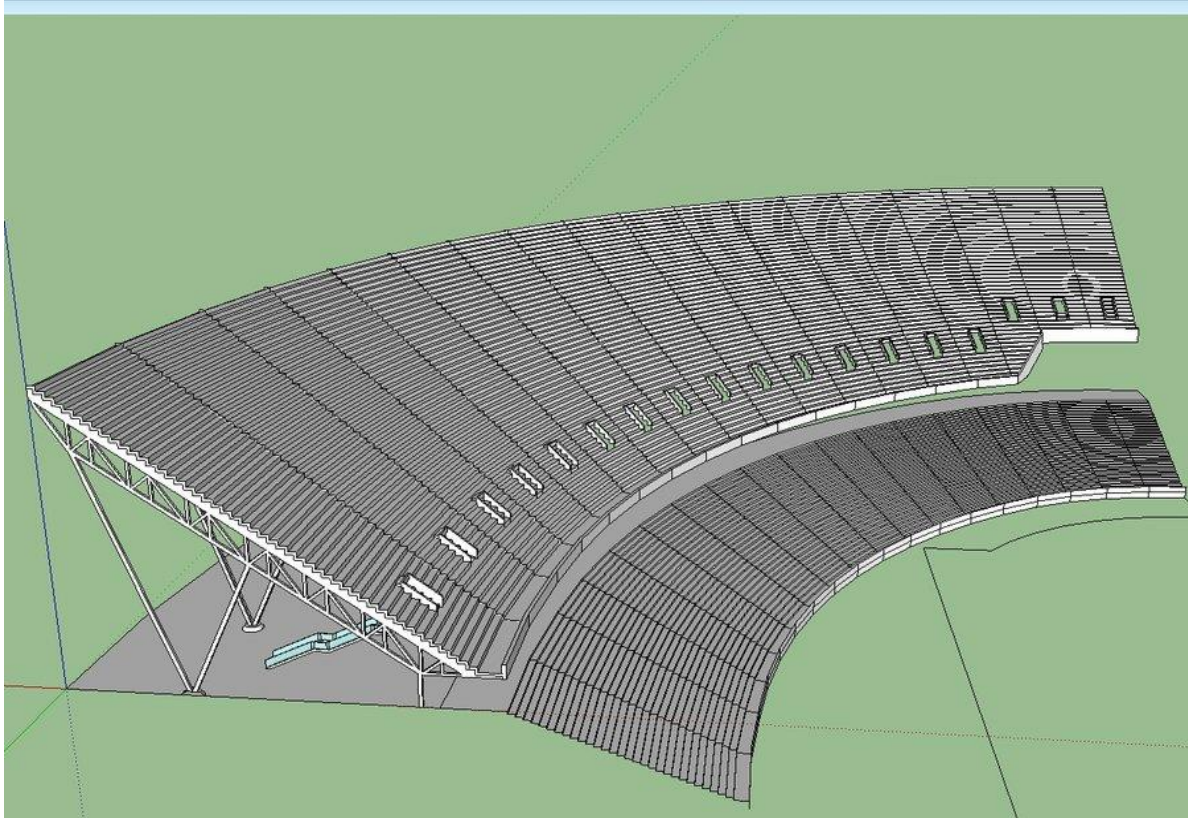
The oval concept is vital to building this stadium. It is historic, economical and aesthetically important. Whether building “up” to create seating as shown above or building the stadium seating “on top” of a concrete base, the views of all seats will be excellent and not set back from the field. With proper acoustic design, **The New Pitt Stadium** will also be as formidable “in sound” as Seattle Seahawks Stadium.



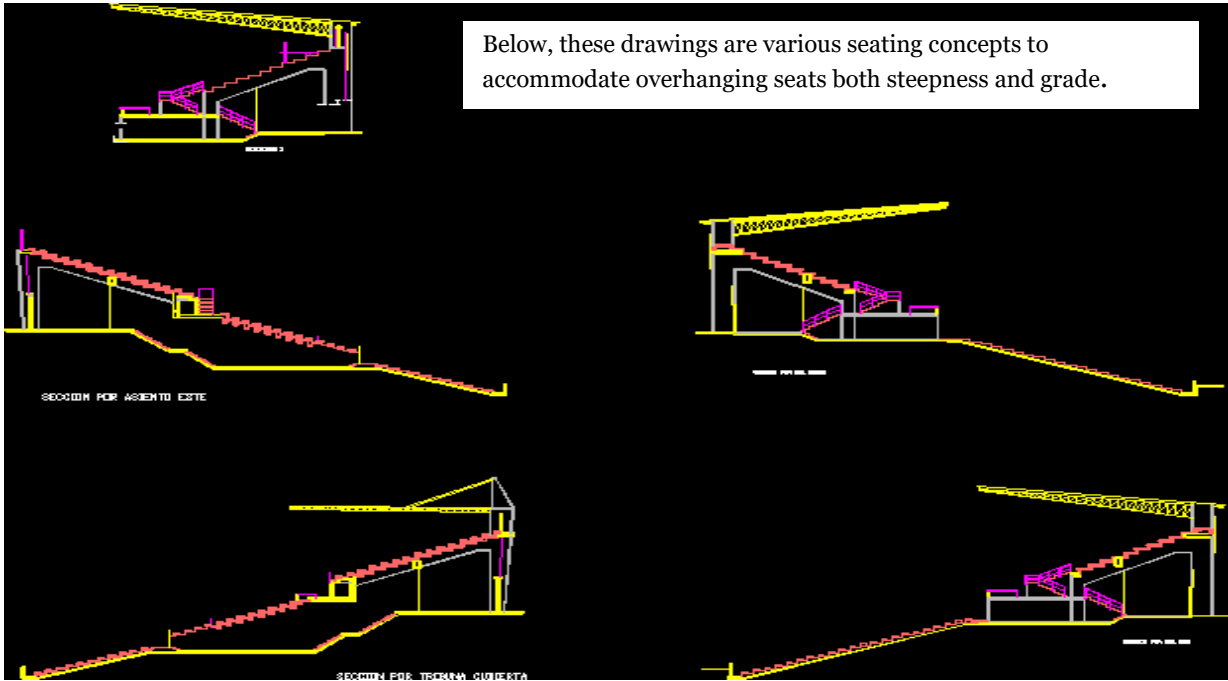


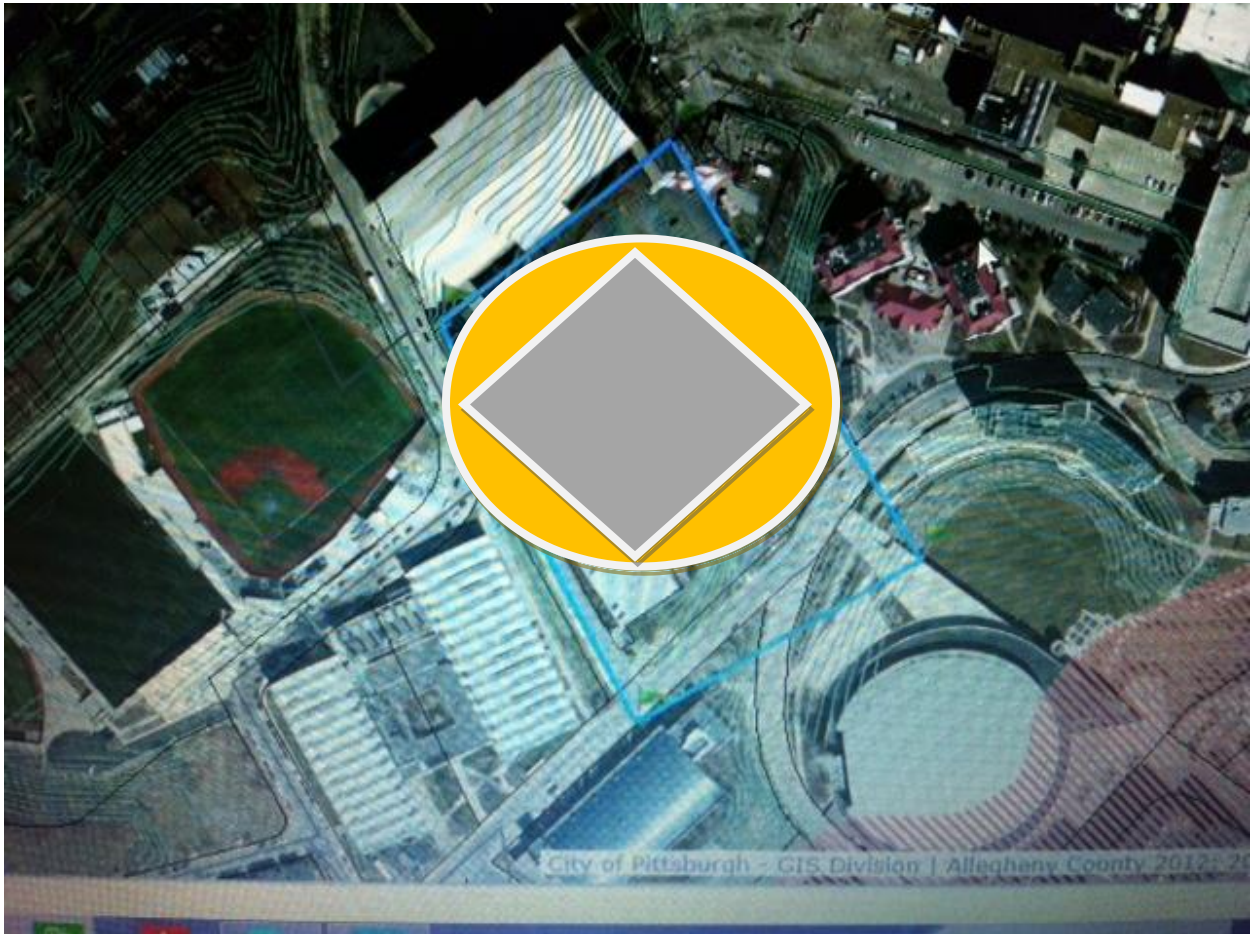
Above is the Queen Elizabeth Olympic Stadium with the design concept of “Build Above” model. With the concrete base, over hanging seats can be constructed to accommodate seating. While this stadium was an 80,000 seat capacity, **New Pitt Stadium** will be 45-50,000. The need for overhang seats will be greatly reduced from above photo. Also, the structural supports located above the seating (yellow arrow) were used for weather cover which may be cost prohibitive for **The New Pitt Stadium**. Below is a more distinct rendering of what seating will look like at **New Pitt Stadium**.





These are potential design features of overhanging seats traversing walkways, streets and easements for **The New Pitt Stadium**. The seat grade will be expanded to remove the steepness of decline to accommodate a 45-50,000 seat stadium.





The overhanging seats at Fenway Park, Boston, can be used at **The New Pitt Stadium** to maintain walkways and streets to accommodate people movement both ingress and egress. Also, the large vehicles and trucks needed for game broadcasts, team movement and supplying the super box and club areas of **The New Pitt Stadium** will find it easy to access their gates and entrances. Additionally, Computer Generated Stadium Façades exemplify what the natural stone walls of Old Pitt Stadium will look like at **The New Pitt Stadium**.

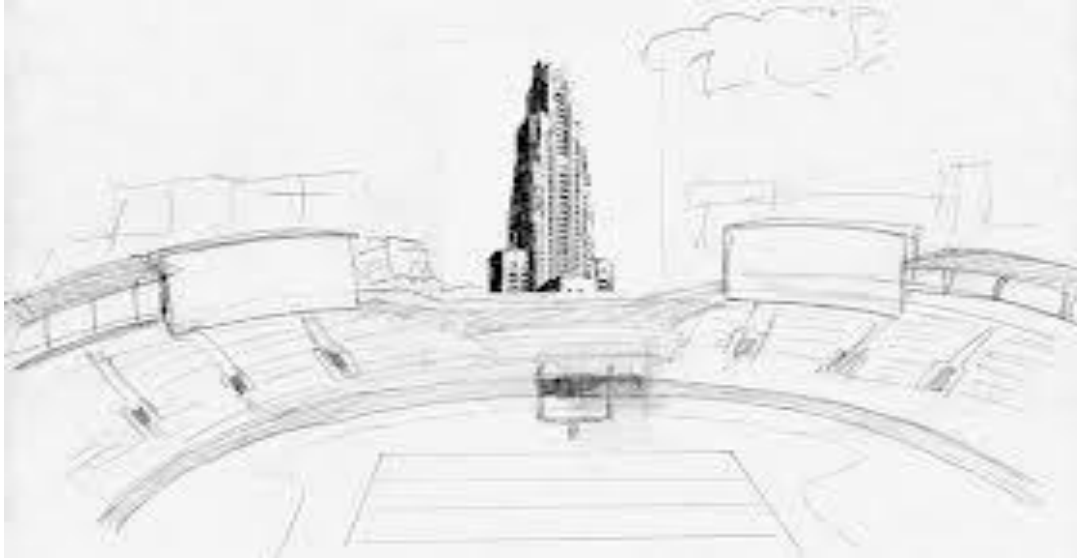
The New Pitt Stadium: A view of an actual facade is seen below at Citi Field in New York City. The stone work motif adds to the history of the sport culture.



PHOTO BY S. L. HARRIS

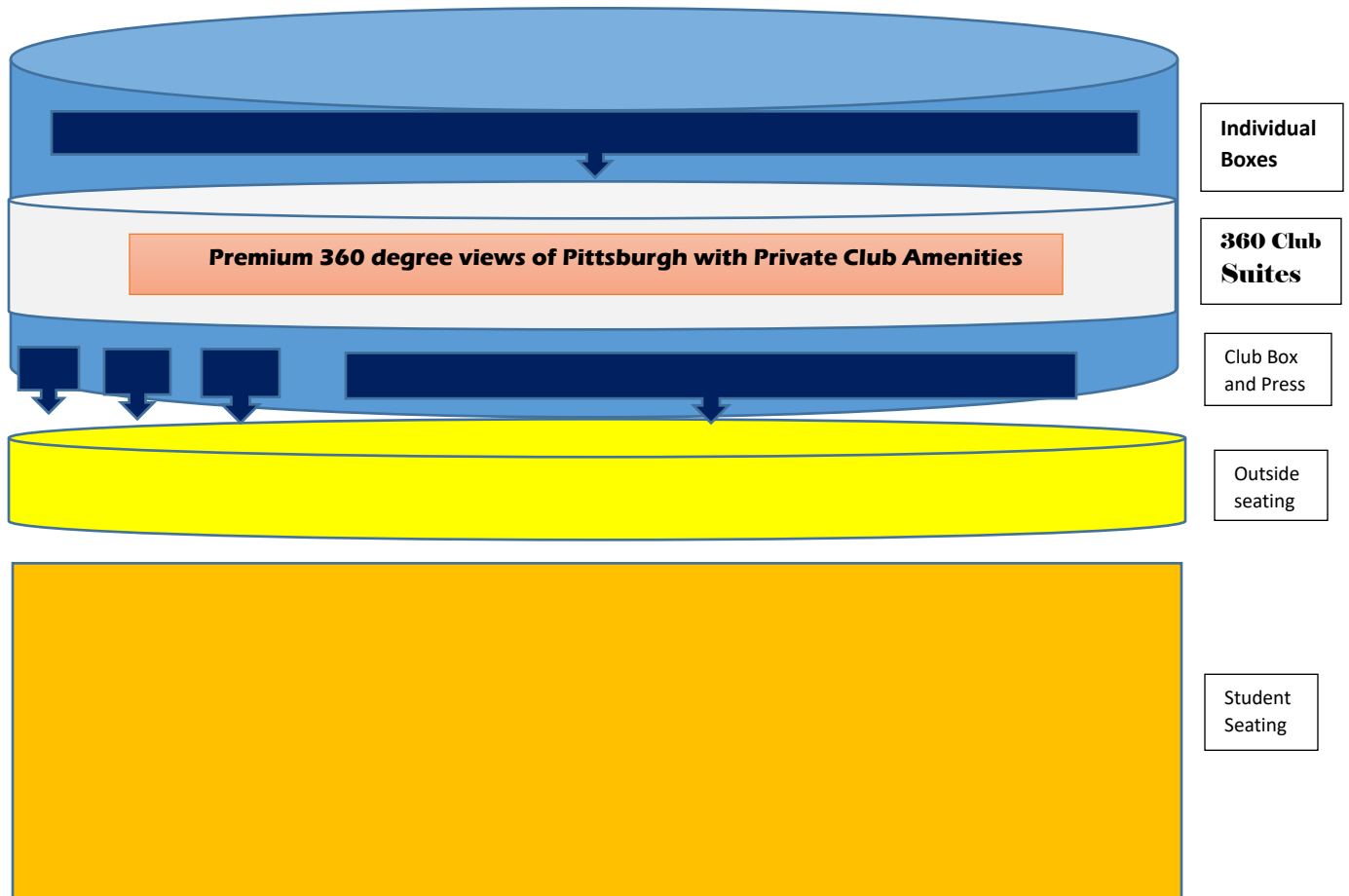
© 2011 by the University of Pittsburgh

Regarding the concrete base of **The New Pitt Stadium**, no matter the configuration implied or actual in this plan, the seating structure above this base will not only be more structurally sound than Heinz Field, but it will also provide a near perfect viewing seating area much like Old Pitt Stadium (where there was never a bad seat in the house!)



Additionally, **The New Pitt Stadium** will afford spectacular views of The Cathedral & Downtown Pittsburgh. **THE PANTHER PERCH** Premium Seating

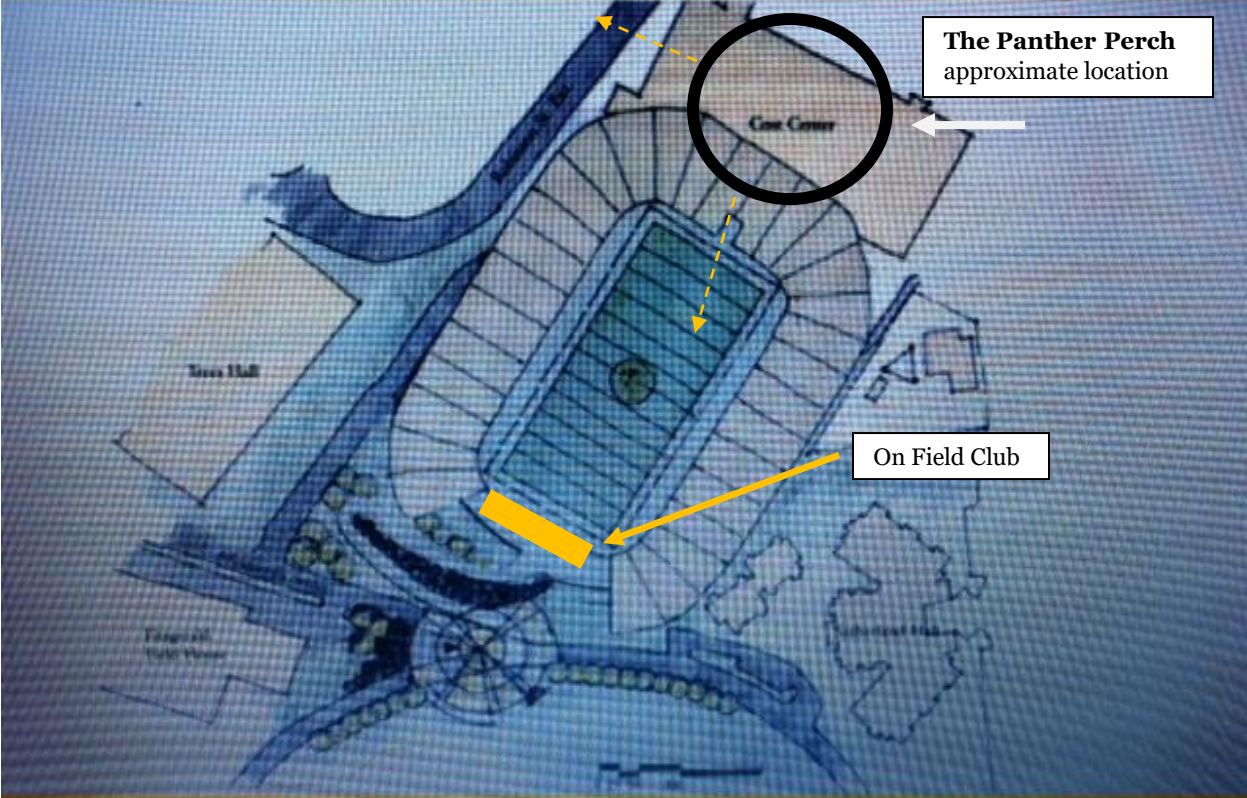




THE PANTHER PERCH CLUB AND BOX SEATING

Constructed above The Cost Athletic Center will be THE PANTHER PERCH. This 360 degree oval shaped structure will be directly above stadium bench seating for students reaching to the field level. Seating will include priority parking and club amenities that will create enviable views and catering that will make the PANTHER PERCH a sought after corporate, banquet, graduate and alumni event facility which will be used year round.

Downtown View

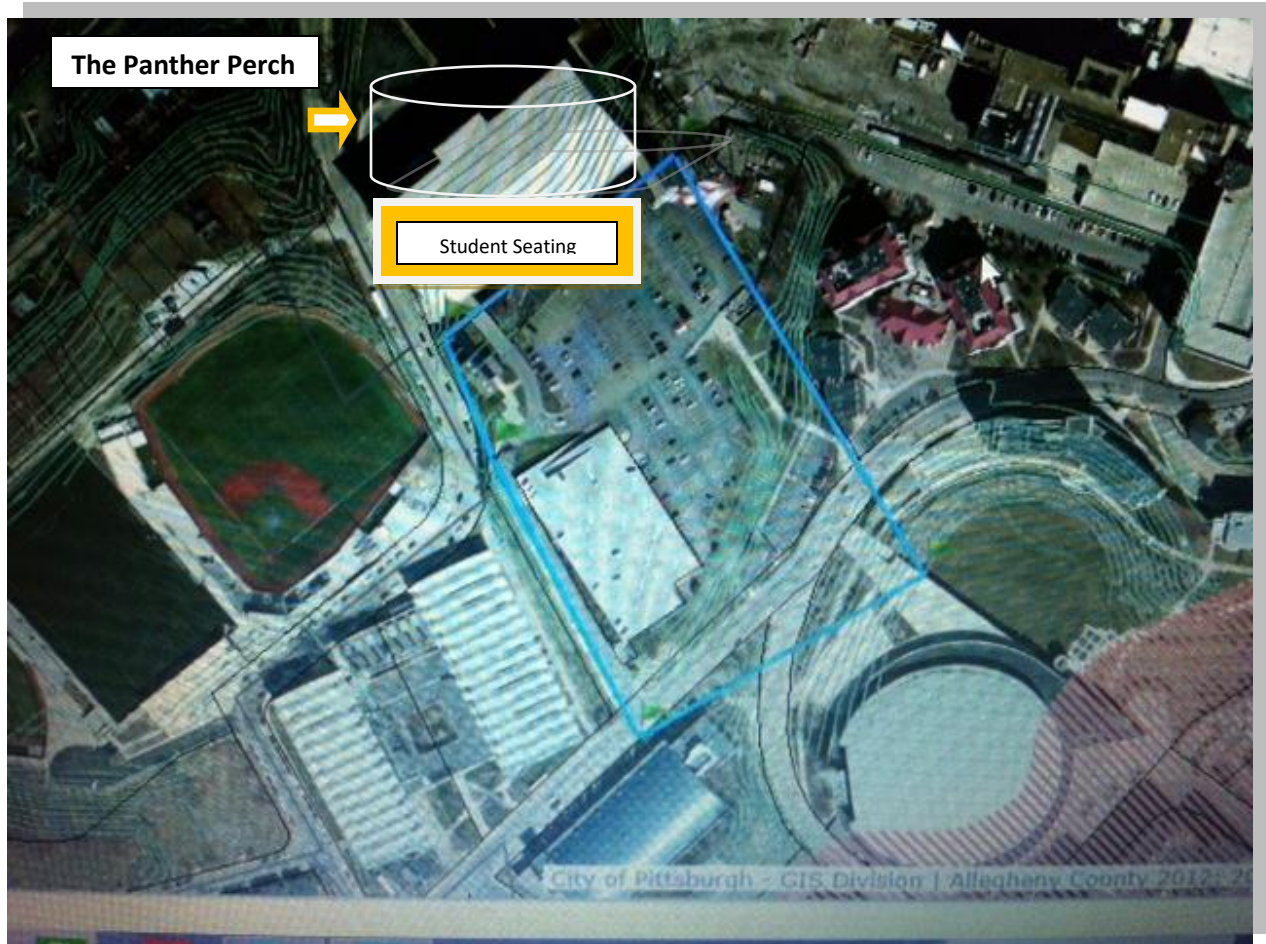


The Panther Perch
approximate location

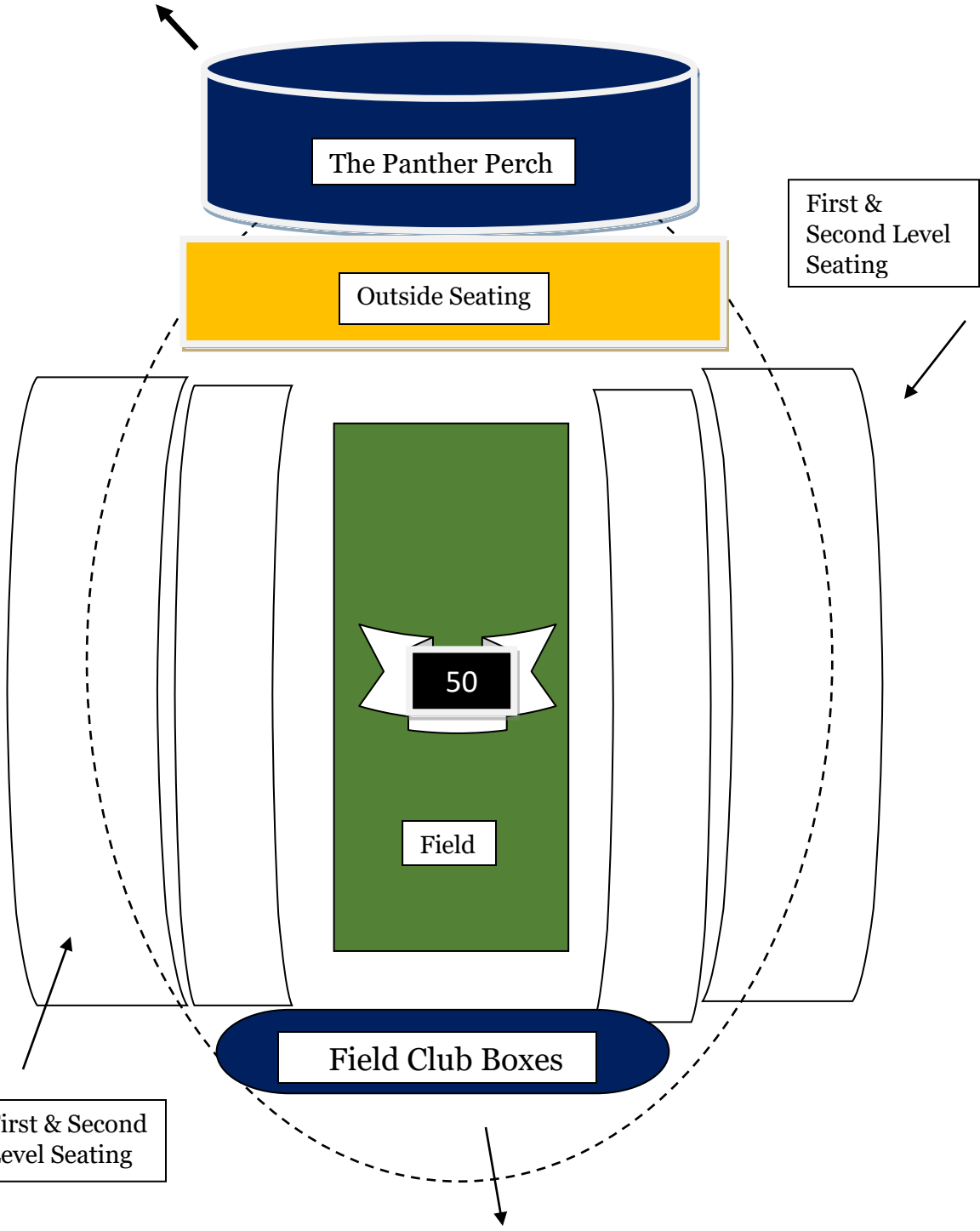
On Field Club

Cathedral, Oakland & Schenley Park View

The steel and concrete underpinnings of **The New Pitt Stadium** will make it more secure and functional than both Heinz Field and Old Pitt Stadium. **The New Pitt Stadium** will not have a “swaying” problem like Heinz Field, and unlike Old Pitt Stadium, it will be both state of the art and fan friendly with numerous HD scoreboards, super boxes / club areas & seating, concession stands, bathrooms and passable concourses. Below: **THE PANTHER PERCH** location above The Cost Athletic Center.



Downtown View



The Panther Perch

First & Second Level Seating

Outside Seating

50

Field

Field Club Boxes

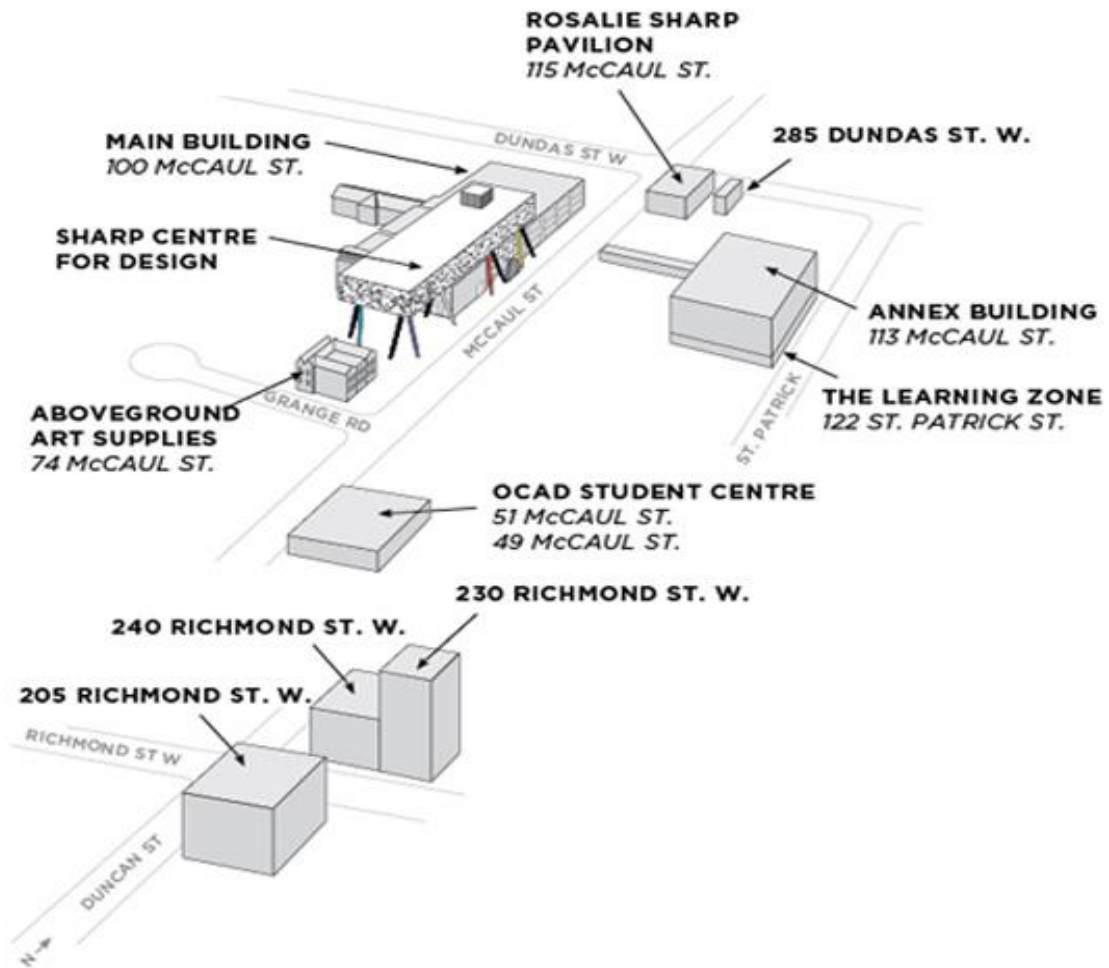
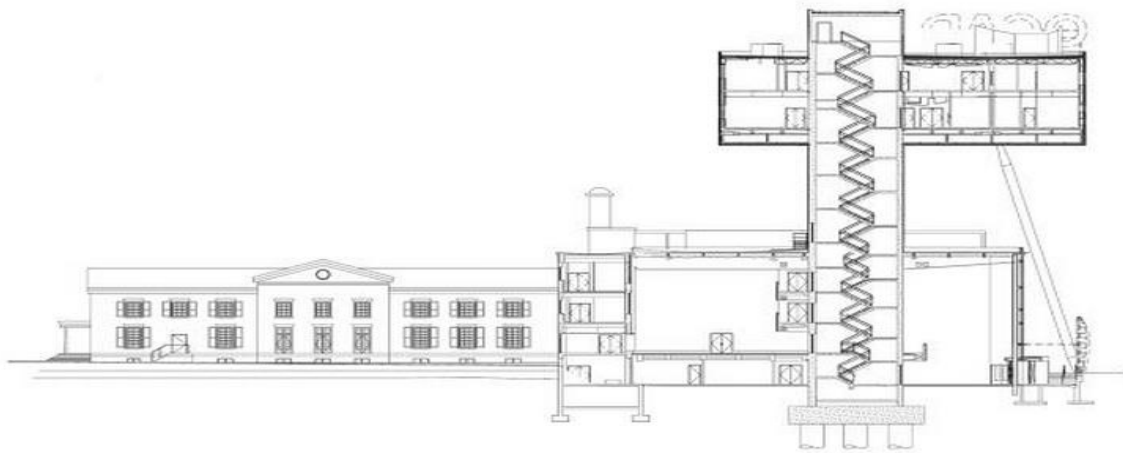
First & Second Level Seating

Cathedral, Campus & Schenley Park View

The history of buildings suspended above pre-existing ones is a well documented success as the photo below illustrates.

Toronto College of Design, Toronto, Canada.





PARKING:

Unlike rural areas that serve as the campuses for some universities, The University of Pittsburgh is a vibrant and growing urban campus. **Old Pitt Stadium was built for 60,000 people to attend football games.**

The New Pitt Stadium will accommodate between

45,000 to 50,000 plus fans, and

15,000 parking spaces

are currently available to use

for game day at The New Pitt Stadium.

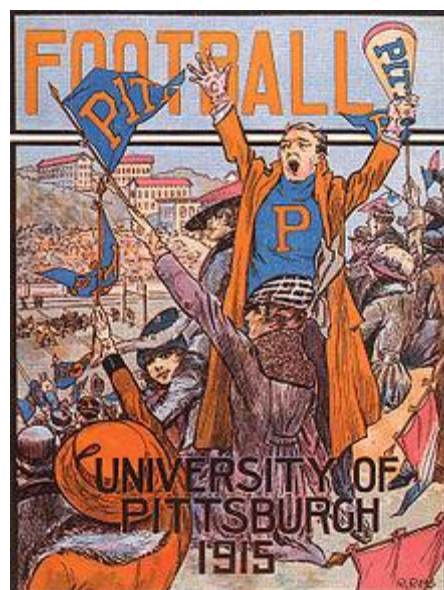
By all professional urban planning study accounts,

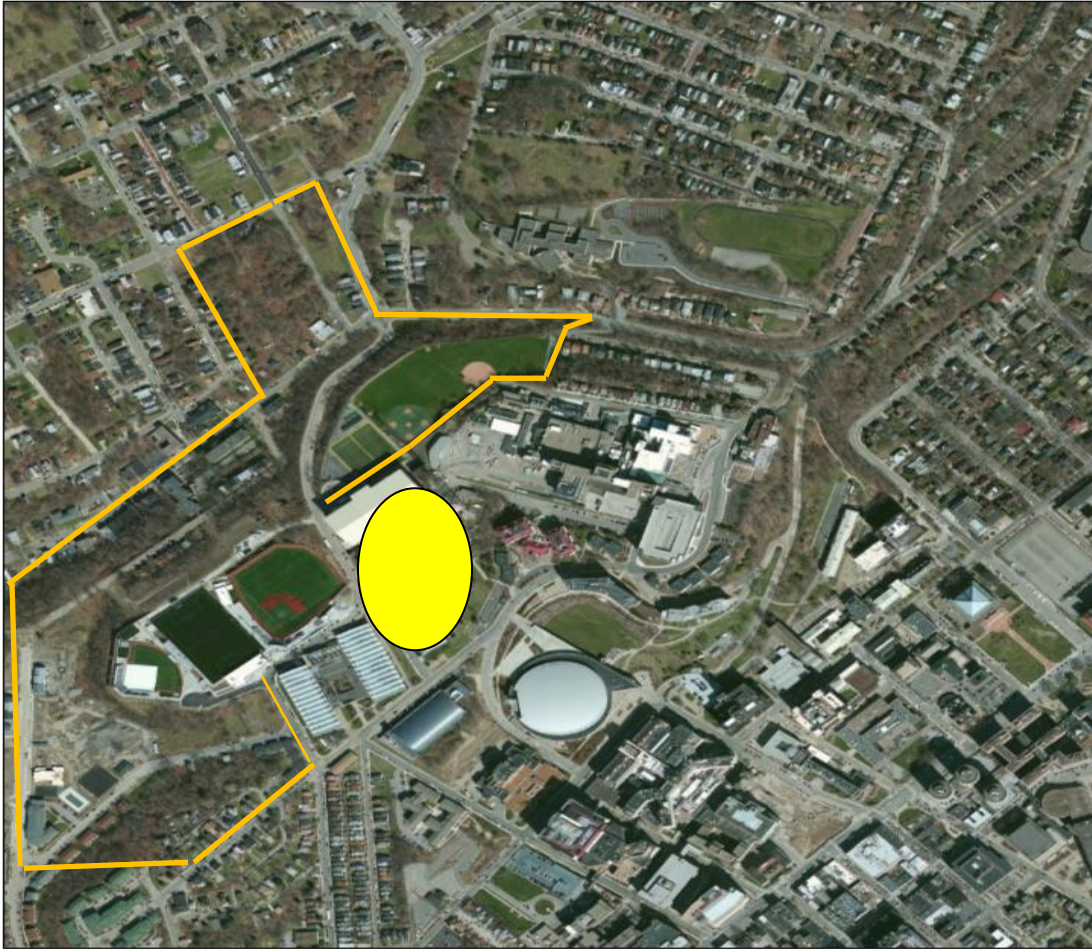
10,000 parking spaces are available within

TWO city blocks from The New Pitt Stadium.

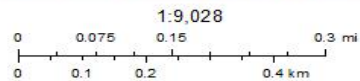
There are 5,000 additional parking spaces within

FIVE city blocks of New Pitt Stadium.





January 14, 2015



Source: Esri, DigitalGlobe, GeoEye, Earthstar Geographics, CNES/Airbus DS, USDA, USGS, AeroGRID, IGN, IGP, swisstopo, and the GIS User Community

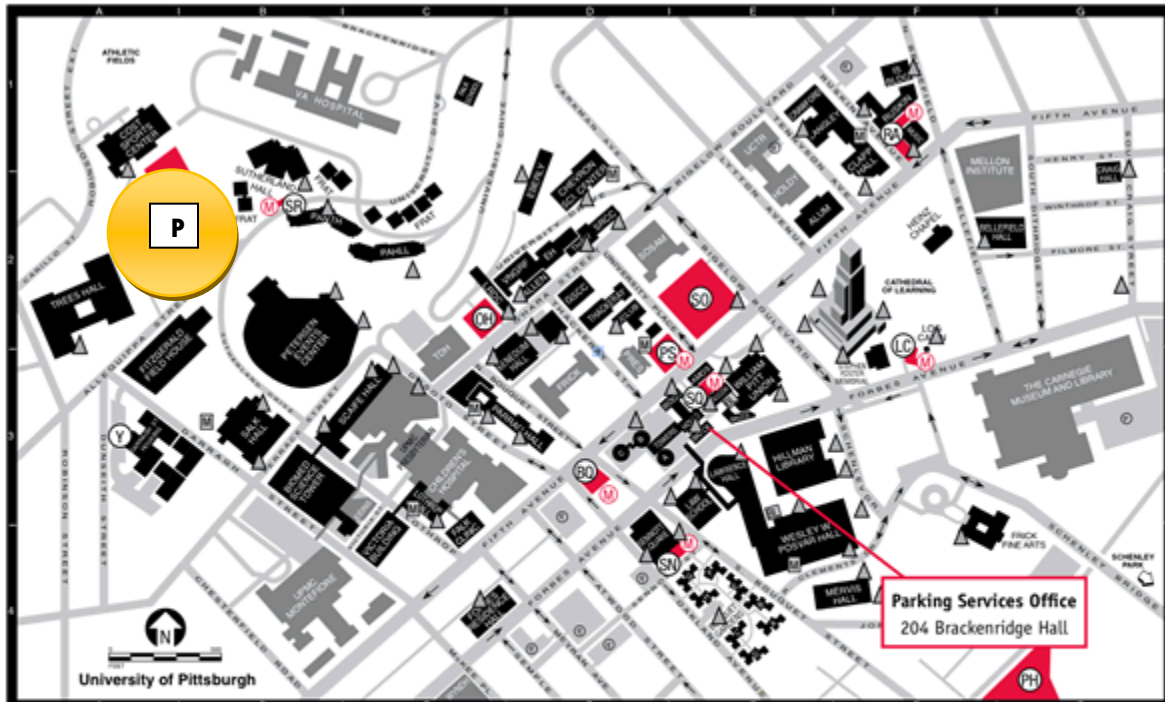
mjhoma

NEW PARKING FOR NEW PITT STADIUM

Immediate parking at grade FOR 5000 NEW PARKING SPACES

TOTAL PARKING SPACES - 4 BLOCKS to NEW PITT STADIUM IS 20,000

NEW PARKING SPACES will be created in the area outline of NEW PARKING available to THE NEW PITT STADIUM (Yellow Oval). Drawn to scale, the area delineated with yellow lines can accommodate the CURRENT NUMBER OF PARKING SPOTS of at least SIX OC LOT PARKING.



Visitor Parking at Pitt

2008-09

UNIVERSITY OF PITTSBURGH

Metered Parking

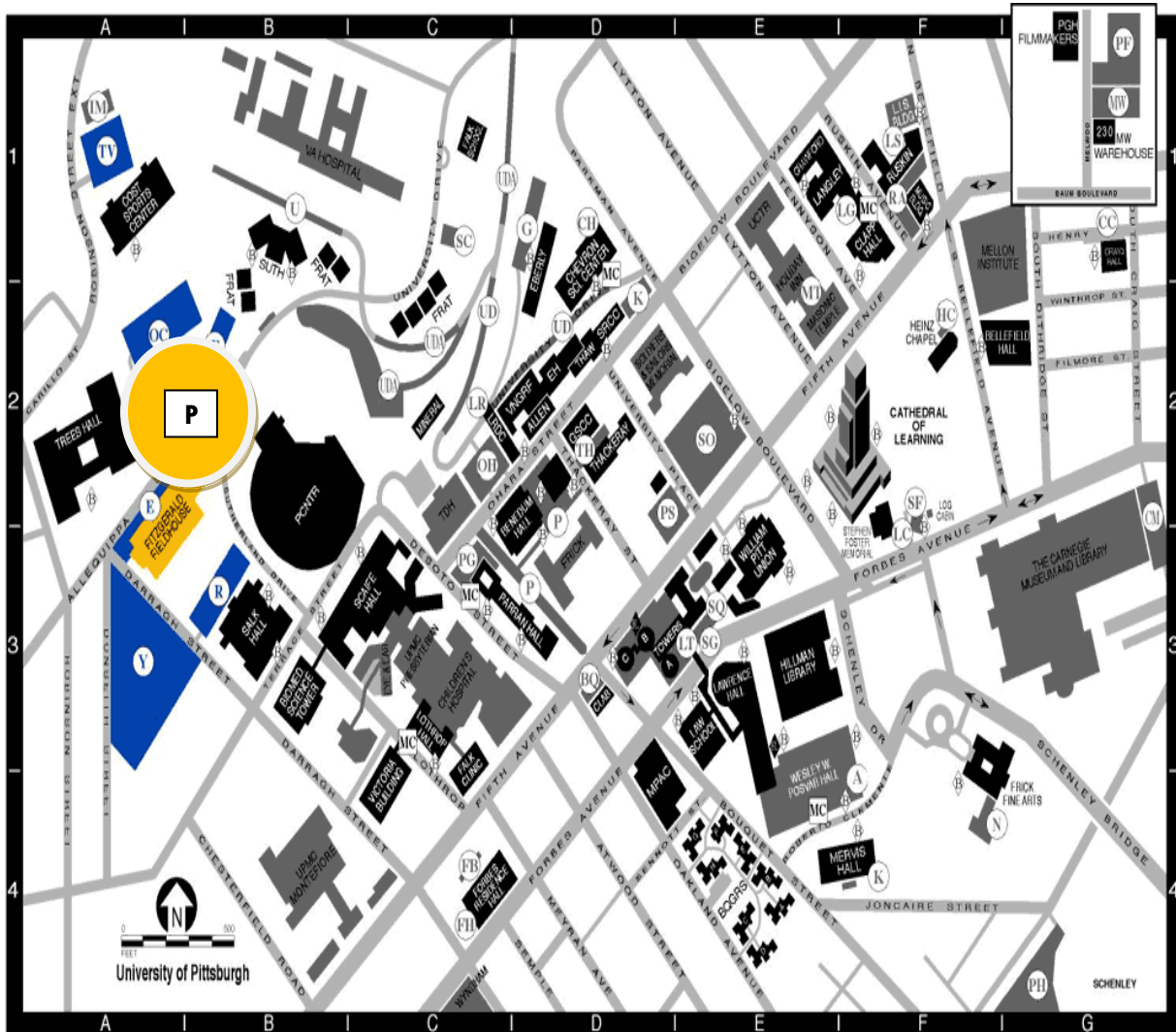
Lot Location	Key	Lot Location	Key
BQ Bouquet Street.....	(D-3)	SN Sennott Square.....	(D-4)
LC Log Cabin.....	(F-2)	SQ Schenley.....	(E-3)
PS University Place.....	(D-3)	SR Sutherland Hall	Visitor.....
RA Ruskin Hall.....	(F-1)	Y Darragh Street	Housing.....

Parking Lots and Garages

Lot Location	Key	Lot Location	Key
OC Allequippa Street.....	(A-2)	SN Sennott Square.....	(D-4)
OH O'Hara Garage.....	(C-2)	SO Soldiers and Sailors.....	(E-2)
PH Panther Hollow.....	(G-4)	<i>Must be University-affiliated</i>	

Bicycle racks Motorcycle parking
 Bicycle lockers





Parking Lots and Garages

Parking Lots

LOT	LOCATION	KEY	LOT	LOCATION	KEY	LOT	LOCATION	KEY
CH	Chevron Science Ctr.	D-2	MW	Melwood Lot	INSET	SR	Sutherland Hall Visitor	
E	Fieldhouse	A-2	N	Frick Fine Arts Building	F-4	SP	Log Cabin	
*F	Fraternity	B-2	OC	Allequippa Street	A-2	SQ	Schenley Quadrangle Visitor	
FB	Forbes	C-4	OE	Old Engineering Hall	D-2	TH	Thackeray Hall	
HC	Heinz Chapel	F-2	P	North Bouquet Street	D-3	U	Veterans Lot	
IM	Intramural Lot	A-1	PF	Pittsburgh Filmmakers	INSET	UD	Upper University Drive	
K	S.R.C.C. Building	D-2	PH	Panther Hollow	G-4	V	Allen Hall	
KG	Katz Graduate School	F-4	PS	Physicians Building	D-2	Y	Darragh Street	
LC	Log Cabin Visitors	F-2	RA	Ruskin Hall	B-3			
MT	Masonic Temple	E-2	SC	Falk School	F-1			
					C-1			

MC Motorcycle Parking
permit required
BL Bicycle Locker

Parking Garages

KEY	GARAGE	LOCATION
B-2	A	Wesley W. Posvar Hall
F-2	CC	Craig Hall
E-3	FH	Forbes Hall
D-2	LG	Langley Hall
B-1	LR	Leaming Res. Dev.
C-1,2	LS	L.I.S. Building
D-2	LT	Litchfield Towers Garage
A-3	OH	O'Hara Garage
	PG	Parran Hall
	SG	Schenley Garage
	SO	Soldiers & Sailors
	TV	Towerview


Off-Map Lots

KEY	LOT	LOCATION	KEY	LOT	LOCATION
E-4	CS	Biotech Students	Technology Drive		
G-1	RL	Biotech Center	Technology Drive		
C-4		Day Care Ctr.	Clyde Street		
F-1		Rent Lot	Eureka Building		
C-2					
F-1	M	Metered Parking			
E-3	LOT	LOCATION	KEY	LOT	LOCATION
C-2	BQ	Bouquet Street	D-3		
C-3	LC	Log Cabin Visitors	F-2		
E-3	PS	Physicians Lot	D-2		
E-2	RA	Ruskin Avenue	F-1		
A-1	SQ	Schenley Quad	E-3		
	SR	Sutherland Hall/Visitors	B-2		

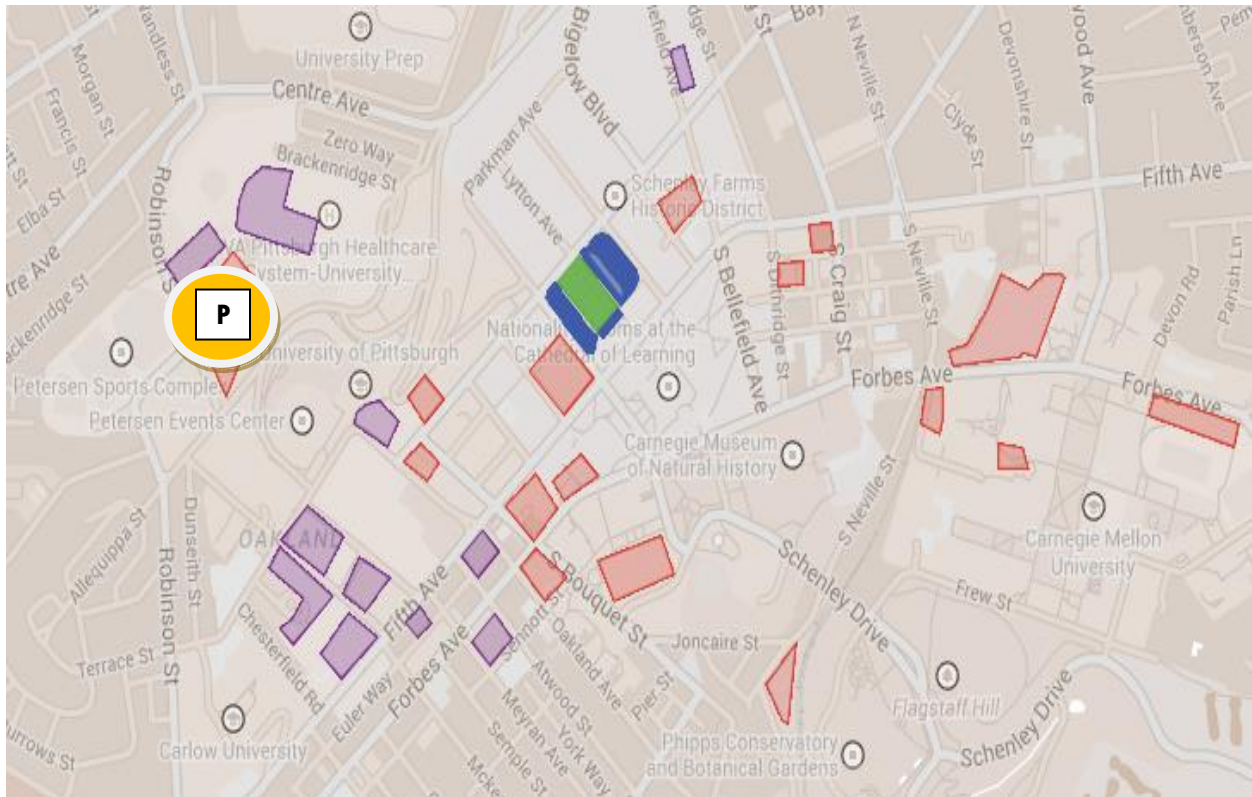
B Bicycle Parking



Allen Hall.....ALLEN D2	Center for Sports Medicine.....CSMR C4	Forbes Pavilion.....PAVLN C4	Loeffler Building.....LOEFF D4	Pittsburgh Board of Education.....PBE G2	Trees Hall (athletic facilities).....TREES A2
Alumni Hall.....ALUM E2	Charles L. Cost Sports Center.....COST A1	Forbes Hall (residence hall) The Health Book Center, Department of Parking, Transportation, and Services.....FRTOV D4	Log Cabin.....LOGCB F2	Post Office (Oakland Branch).....POST F4	University Center (UPMC).....LUCR E1
Office of Admissions and Financial Aid.....OFFAD A1	Chevron Science Center.....CHVRN D1	Forbes Tower.....FRTOV D4	Lothrop Hall (residence hall).....LOTHP C3	UPMC Presbyterian.....PRESB C3	University Child Development Center.....UCHDEV G1
Office of Alumni Relations.....OALR E3	Children's Hospital.....CHLD C3	Fraternity Housing Cmplx.....FRAT B1, C2	Lutheran University Center.....LUC G2	Public Health.....PUBHL D3	University Club.....UCLUB D2
Amos Hall (residence hall).....AMOS E3	Clapp Hall.....CLAPP F1	Frick Fine Arts Building.....FRKAT F3	Mages-Womena Hsg. (off map).....MAGEE C4	Rangos Research Center.....RANGO C4	University Technology Development Center.....LUTDC G1
Barco Law Building.....LAW E3	Community of Reconciliation Bldg.....CR F1	Frick Int'l Studies Academy.....FRICK D3	McCormick Hall (res. hall).....MCCOR E3	Ruskin Hall.....RUSKN F1	University Place Office Bldg.....UPJAC D2
Bellefield Hall.....BELLH D2	Craig Hall.....CRAIG D1	Gardner Steel Conference Ctr.....GASC D2	Medical Arts Building.....MART D3	Ryan Catholic Newman Ctr. (The Oratory) (off map).....SPAIL G1	Van de Graaff Building.....VNGRF D2
Bellefield Towers.....BELLT F1	Craig Square.....CRSQ D2	Heinz Memorial Chapel.....HEINZ F2	Mellon Institute.....MELLI F1	St. Paul Cathedral.....CATHO F1	VA Pittsburgh Healthcare System.....VA B1
Benedum Hall.....BENDM D3	Crawford Hall.....CRAWF E1	Hill Building.....HILL C4	Mellon Institute (Pgh. Supercomputing Center).....MELLI F1	Salk Hall.....SALK B3	University Drive Division.....VA B1
Biomedical Science Tower.....BSTWR B3	Eberly Hall.....EBERLY D1	Hilman Library.....HILMAN E3	Melwood Maintenance Building (off map).....MELWD G1	Scaife Hall.....SCAIF C3	Victoria Building.....VICTO C4
The University Book Center.....BOOK D3	Engineering Auditorium.....ENGUD D2	Holland Hall (residence hall).....HOLL D3	Mervis Hall.....MERVS F4	Schenley Park.....SCHENP G4	Webster Hall.....WEBBS G1
Bouquet Gardens.....BOGGS E4	Eureka Building (off map).....EURA C4	Holiday Inn.....HOLLY E1	Merets Hall.....MERVS F4	Sennott Square.....SENSO D4	Wesley W. Posvar Hall.....WWPH E4
Brackenridge Hall (res. hall).....BRACK E3	Eye and Ear Institute.....EENS C3	Information Sciences Building.....IS F1	Music Building.....MUSIC F1	Soldiers & Sailors Memorial Hall.....SOSAM D2	Western Psychiatric Institute and Clinic (see Thomas Detre Hall).....WPI E3
Copy Cat, The Pitt Shop, Parking Office).....COPI C4	Falk Medical Bldg. (Falk Clinic).....FALCK C4	Iroquois Building.....IROQU D4	Old Engineering Hall.....OEH D2	Space Research Coord. Ctr. (off map).....SROC D2	Wyndham Garden Hotel.....WYNDH C4
Bruce Hall (residence hall).....BRUCE E3	Falk School.....FALKS C1	Jewish University Center.....JUC G2	Oxford Bldg. (351 Forbes Ave).....OXFHD C4	Stephen Foster Memorial.....STEPH F2	
Carnege Library of Pittsburgh.....CARL E3	First Baptist Church.....BAPT F1	Kaufmann Medical Building.....KAU C4	Pennsylvania Hall (res. hall).....PAHLL C2	Sutherland Hall (residence hall).....SUTHD B1	
Carnegie Museums of Pgh.....CARNG G3	Fitzgerald Field House.....FHOUS A3	Langley Hall.....LANGY E3	The John M. and Gertrude E. Petersen Events Center.....PCNTR B2	Thackeray Hall (registration).....THACK D2	
Cathedral of Learning.....CL F2	Forbes Craig Apartments.....FBCRG G2	Learning Research & Dev. Ctr.....LRDC D2	Petersen Events Center.....PCNTR B2	Thaw Hall.....THAW D2	
Center for Bioengineering (off map).....CNBIO C4	Forbes Oakland Bldg. (off map).....FOBLD C4	Litchfield Towers.....LITCH D3	Pittsburgh Athletic Association.....PAA E2	Thomas Detre Hall of the Western Psychiatric Institute and Clinic.....TCH C3	

 Yellow Dots indicate parking available for New Pitt Stadium on game days





Pitt, CMU & UPMC Parking Map – James Santelli

<https://iamessantelli.files.wordpress.com/2014/10/pitt-parking-map.png>

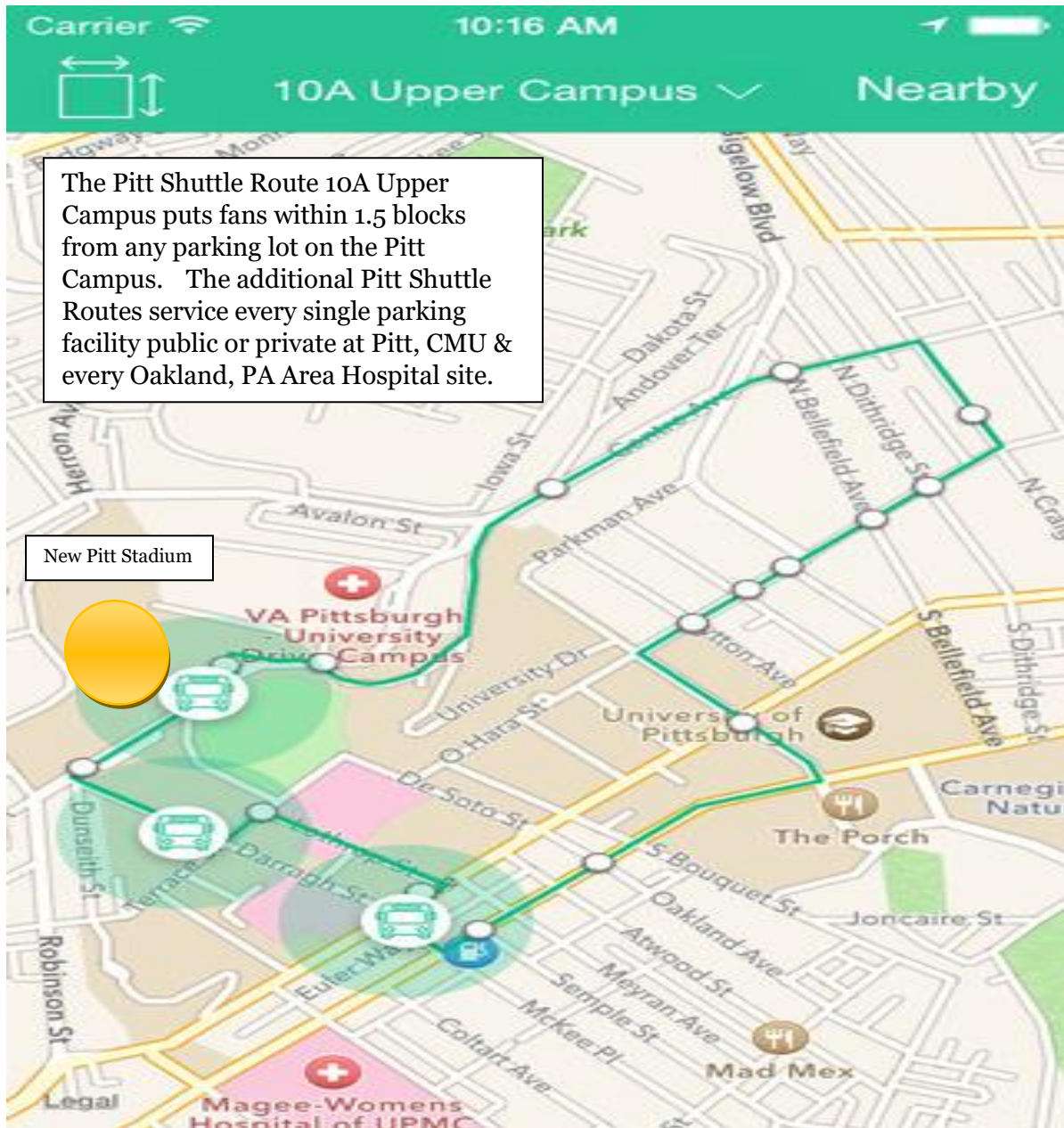


PITT TRANSPORTATION SYSTEM:

The Pitt Shuttle Transportation System is one of the finest urban campus transportation systems in the country. It services more people daily and annually than the third largest public transportation system in Pennsylvania (LANTA – Lehigh Allentown Northampton Transportation Authority). It has state of the art computer / social media / smart phone technology currently in use that can tell a student or Pitt Fan (trying to get to the stadium on game day) exactly to the minute when the shuttle or bus will arrive at their position for transit to **The New Pitt Stadium**. The small drawings below / the Pitt Shuttle routes illustrate the outstanding transit coverage of the Pitt Campus/ CMU / Oakland area by the Pitt Shuttle System.



While all of these routes are excellent in servicing the Oakland Campus, the best and most used route on game day to **The New Pitt Stadium** will be the following below.



The main purpose for building **The New Pitt Stadium** is to create an urban festival atmosphere throughout Oakland, Pennsylvania for at least six Saturdays in the fall of every year. Everyone is encouraged to come to the Pitt Campus, eat and drink in our restaurants, recreate in our park areas, patronize the businesses in Oakland and watch

Pitt win its football game every fall weekend. However, if you just want to park near **The New Pitt Stadium** and take a ride to your seats at the game, Pitt has that covered as well. It is much better than parking, traversing highways and rivers at Heinz Field.

Currently, a final rendering of **The New Pitt Stadium** is being put out to bid with architectural firms. The historic features of Pitt Stadium will undoubtedly be preserved.



The place where the old and the new meet:

THE NEW PITT STADIUM.

HAIL TO PITT!

