

WASTEWATER TREATMENT PLANT IMPROVEMENTS

CITY OF MAYFLOWER, AR

CWB PROJECT #: 18-048

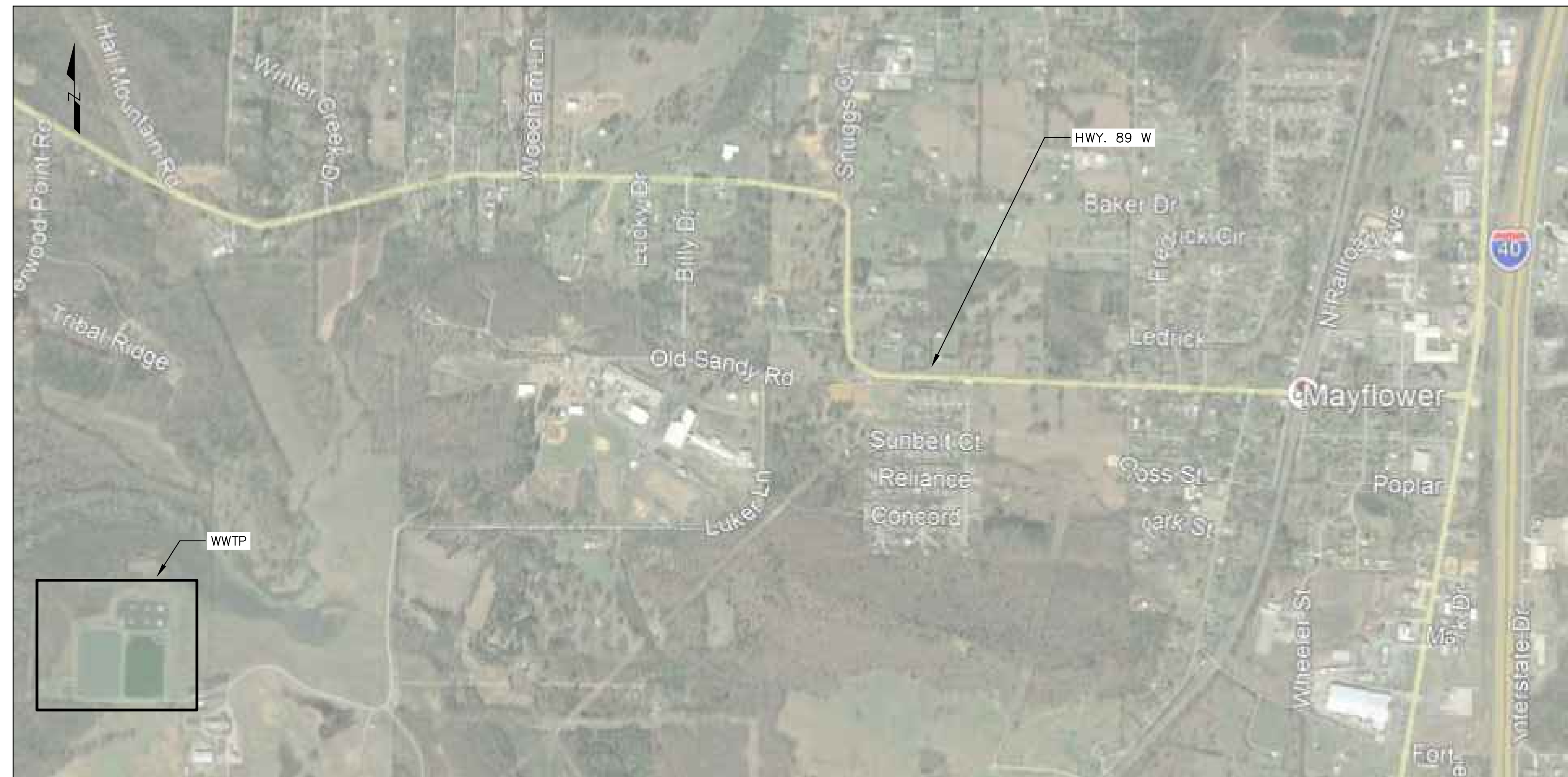


TABLE OF CONTENTS

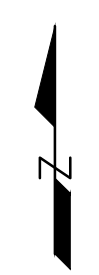
DRAWING #	DESCRIPTION
1	COVER & TABLE OF CONTENTS
2	SITE PLAN
3	AERATOR PLAN
4	CAUSTIC FEED PLAN
5	CHLORINATOR PLAN
6	ELECTRICAL PLAN
7	ELECTRICAL PLAN 2

Arkansas One Call



Know what's below.
Call before you dig.

<p>PROJECT: WWTP IMPROVEMENTS</p>	<p>OWNER: CITY OF MAYFLOWER</p>	 <p>CWB Engineers, Inc. -Designing a Better Arkansas-</p>		<p>SHEET NO. 1</p>
<p>DATE: FEBRUARY 2019</p>	<p>SCALE: N.T.S.</p>  <p>ADJUST ACCORDINGLY</p>	<p>1915 Highway 25B Heber Springs, AR 72543 phone: (501) 362-3744 cell: (501) 766-9832 email: kbreckenridge@cwbenigneers.com</p>	<p>1/31/19</p>	<p>COVER & TOC</p>



REPLACE ULTRA-SONIC LEVEL TRANSDUCER AT EFFLUENT PARSHALL FLUME. REVISE EXISTING BRACKET AS NEEDED FOR INSTALLATION OF NEW EQUIPMENT.

INSTALL PROPOSED CHLORINATION EQUIPMENT IN EXISTING BUILDING. COORDINATE REPLACEMENT WITH OWNER SO THAT NO DISCHARGE OCCURS WHILE CHLORINATION EQUIPMENT IS BEING REPLACED.

EXISTING CONCRETE PAD FOR IBC TOTE SECONDARY CONTAINMENT BASINS.

INSTALL CAUSTIC FEED SYSTEM.

INSTALL ELECTRICAL ITEMS AS SPECIFIED, IN EXISTING CONTROL ROOM.

TREATMENT BASIN

x 255.50

CONVERT SECOND LAGOON CELL TO COMPLETE MIX CELL BY REMOVING EXISTING 5 HP SURFACE AERATORS AND INSTALLING 2-30 HP SURFACE AERATORS

EQUALIZATION BASIN

SLUDGE STORAGE BASIN NO. 2

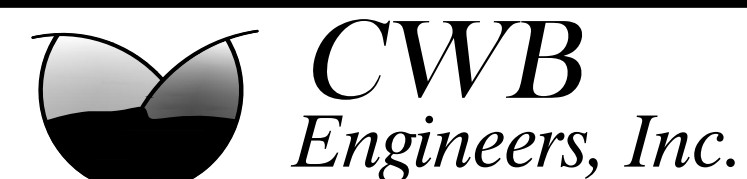
SLUDGE STORAGE BASIN NO. 1

TBM - TOP OF INTAKE STRUCTURE WALL = 269.38

EXISTING GRAVEL DRIVE

PROJECT:
WWTP IMPROVEMENTS

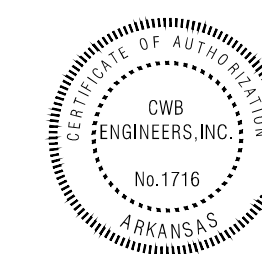
OWNER:
CITY OF MAYFLOWER



-Designing a Better Arkansas-

1915 Highway 25B
Heber Springs, AR 72543

phone: (501) 362-3744
cell: (501) 766-9832
email: kbreckenridge@cwbenigneers.com

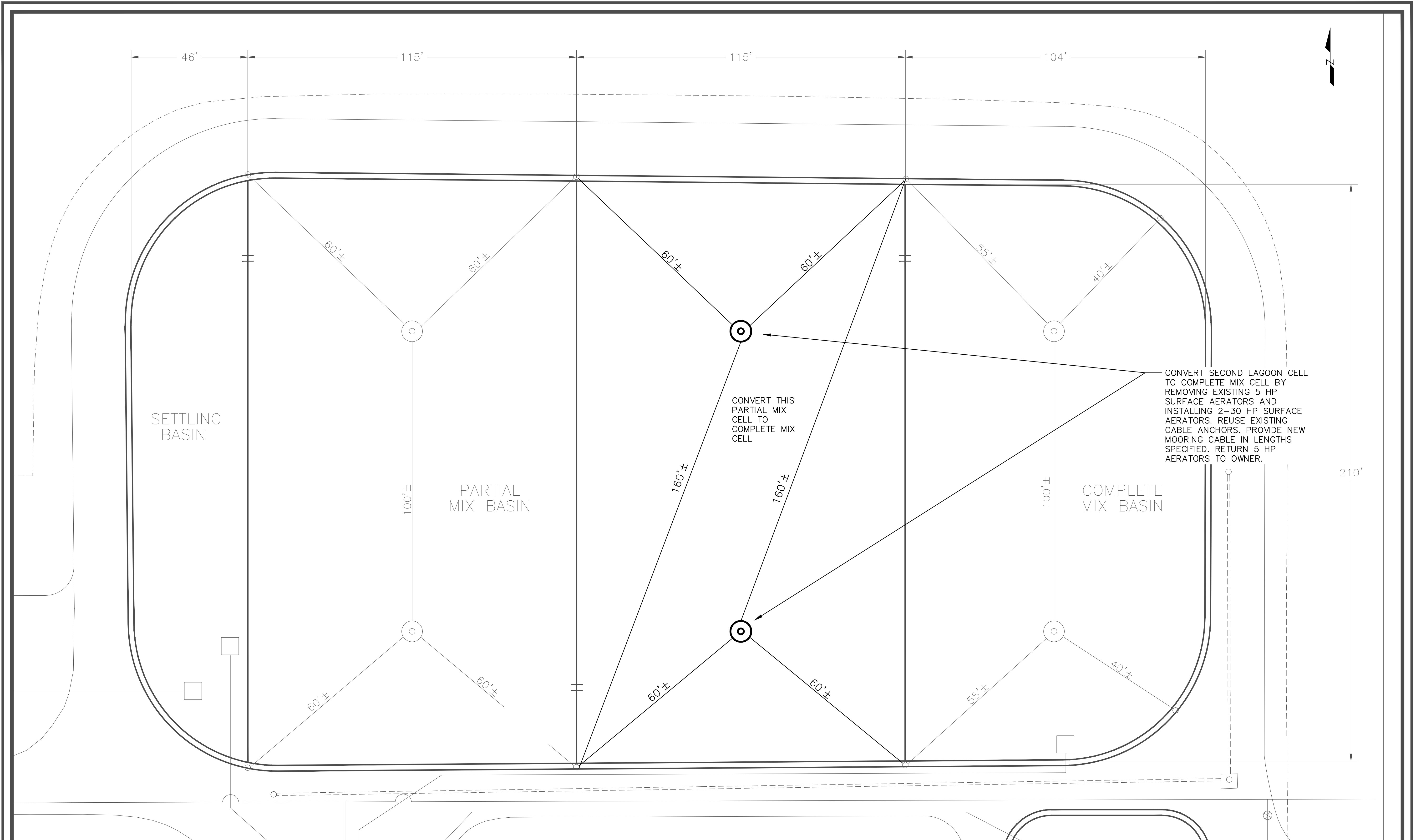


1/31/19

SITE PLAN

SHEET NO.

2



PROJECT:
WWTP IMPROVEMENTS

DATE:
FEBRUARY 2019

OWNER:
CITY OF MAYFLOWER

SCALE: $\frac{1}{16}'' = 1' - 0''$

ADJUST ACCORDINGLY

CWB
Engineers, Inc.

-Designing a Better Arkansas-

1915 Highway 25B
Heber Springs, AR 72543

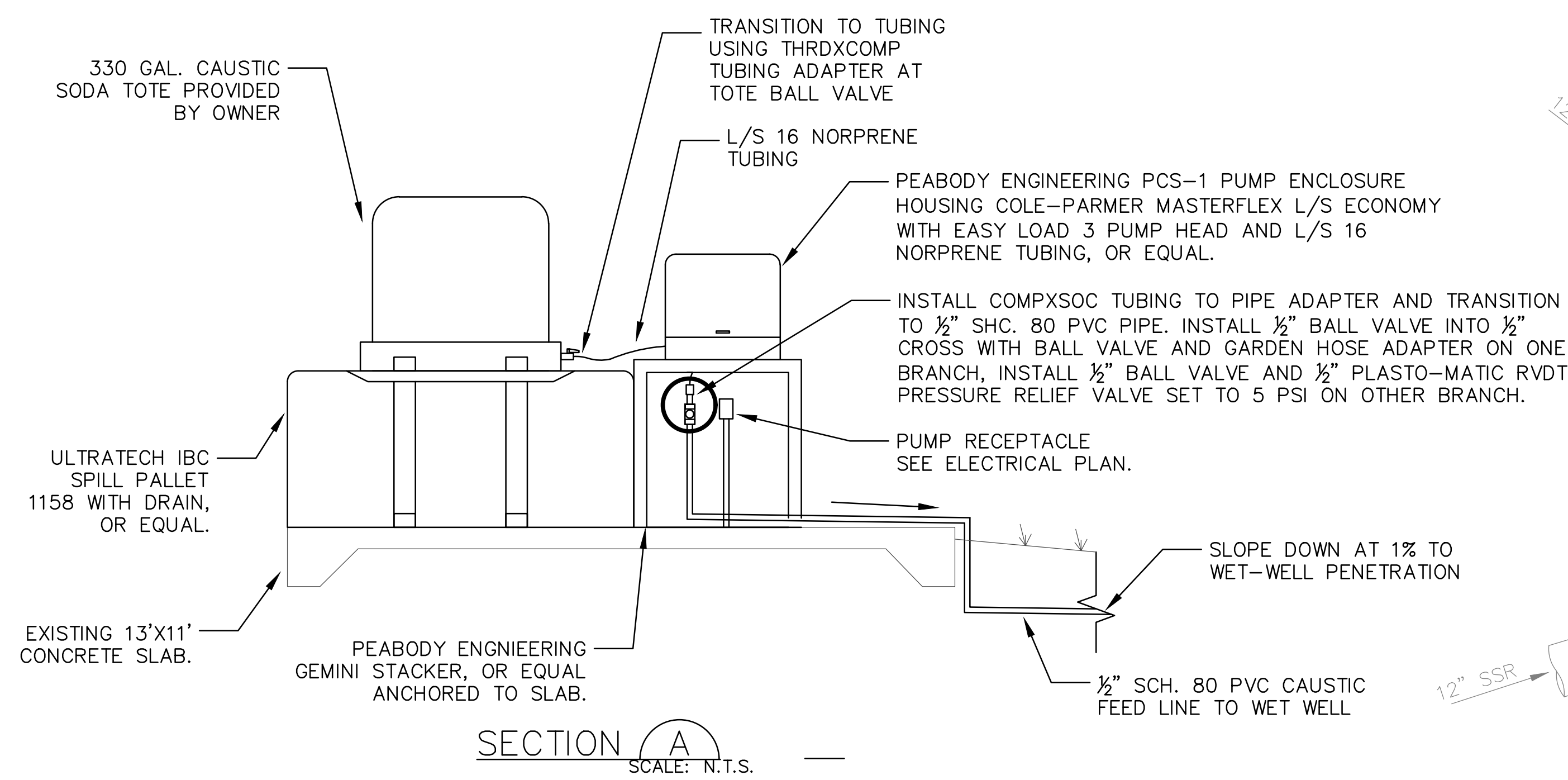
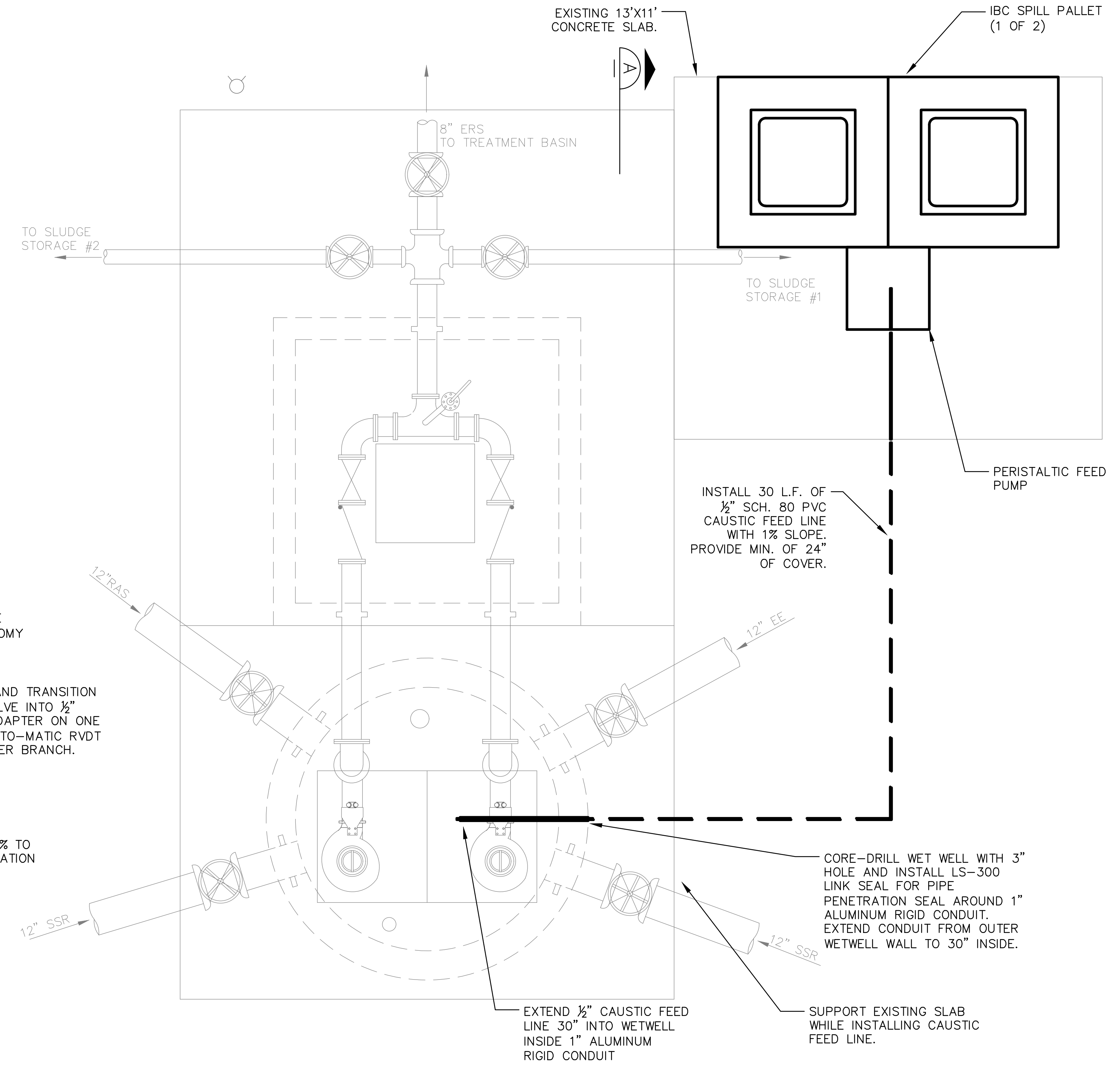
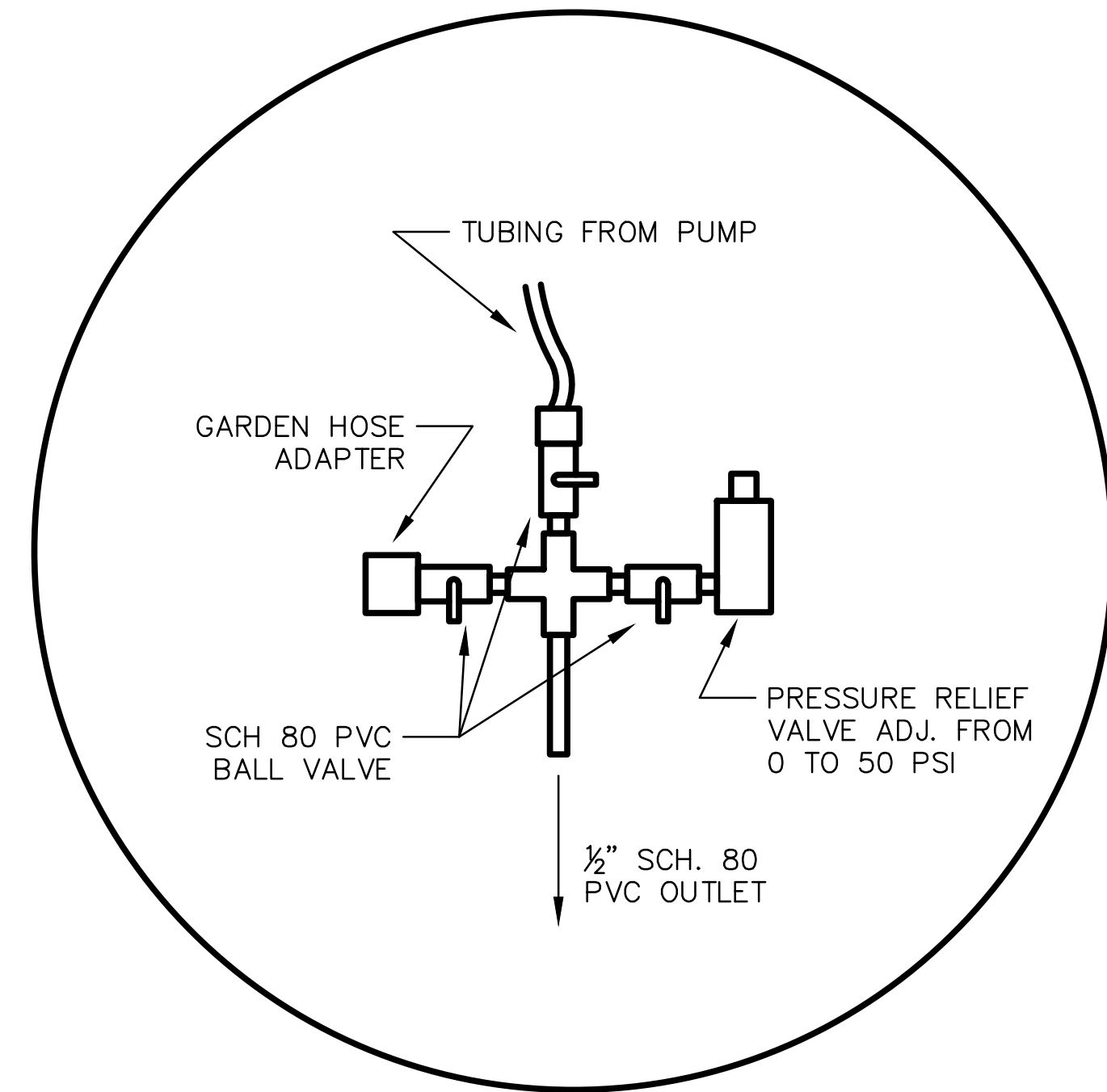
phone: (501) 362-3744
cell: (501) 766-9832
email: kbreckenridge@cwbenigneers.com

STATE OF ARKANSAS
REGISTERED PROFESSIONAL ENGINEER
No. 1716
No. 13831
KYLE BRECKENRIDGE

1/31/19

AERATOR PLAN

SHEET NO.
3



PROJECT:
WWTP IMPROVEMENTS

DATE:
FEBRUARY 2019

OWNER:
CITY OF MAYFLOWER

SCALE: 1/16" = 1'-0"

ADJUST ACCORDINGLY

CWB
Engineers, Inc.

-Designing a Better Arkansas-

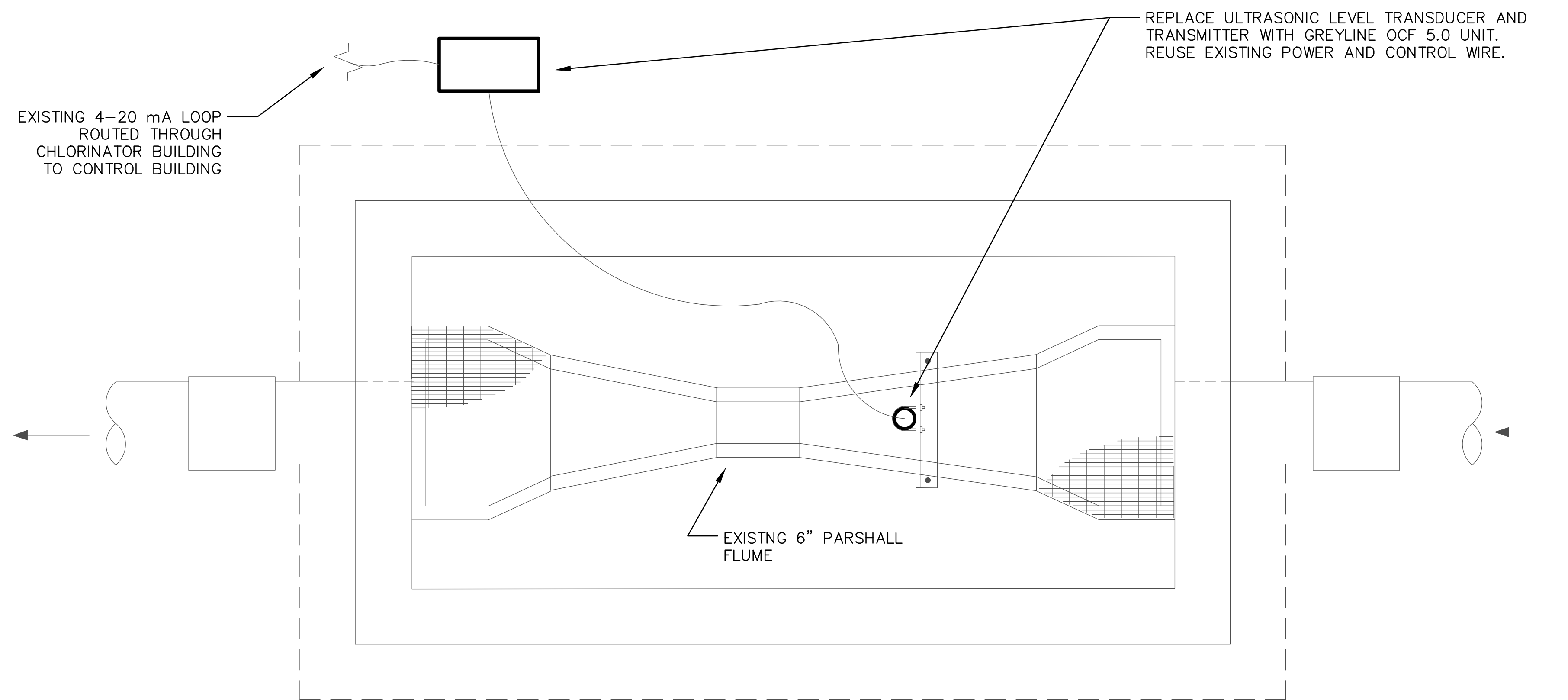
1915 Highway 25B
Heber Springs, AR 72543

phone: (501) 362-3744
cell: (501) 766-9832
email: kbreckenridge@cwbenigneers.com

1/31/19

CAUSTIC FEED PLAN

SHEET NO.
4

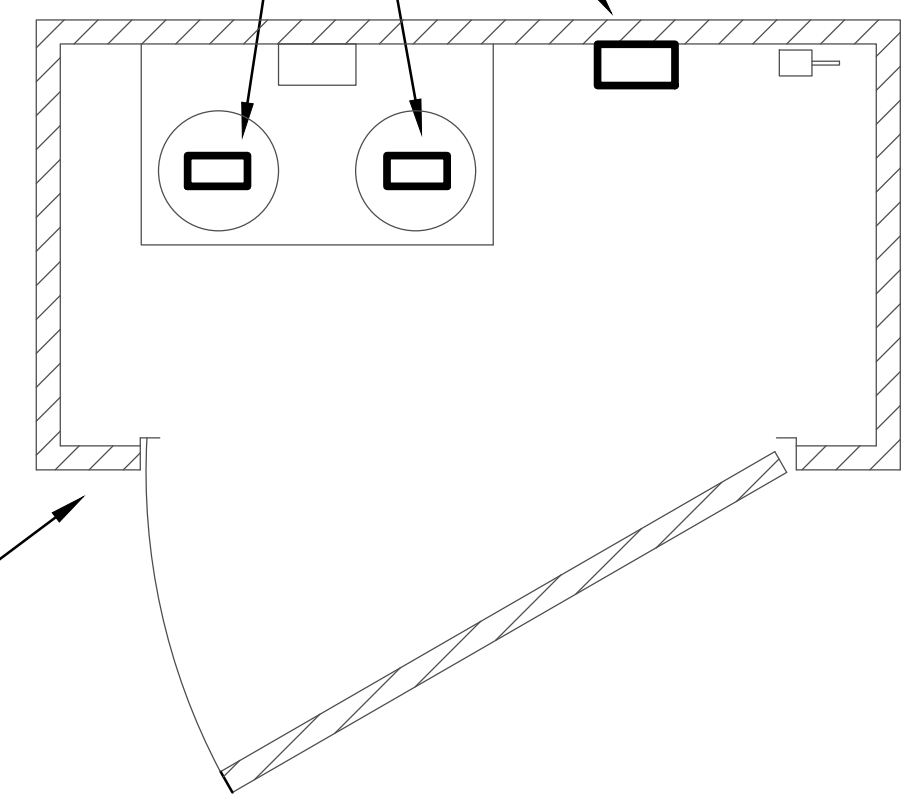


REPLACE ULTRASONIC LEVEL TRANSDUCER AND TRANSMITTER WITH GREYLINE OCF 5.0 UNIT. REUSE EXISTING POWER AND CONTROL WIRE.

EXISTING 4-20 mA LOOP ROUTED THROUGH CHLORINATOR BUILDING TO CONTROL BUILDING

EXISTING 6" PARSHALL FLUME

REPLACE EXISTING CHLORINATOR AUTO VALVE WITH 100 PPD AUTO-VALVE FOR FLOW PROPORTIONAL DOSE CONTROL. ALSO REPLACE VACUUM REGULATORS WITH EQUIPMENT SUPPLIED AND COORDINATED BY AUTO-VALVE MANUFACTURER FOR A COMPLETE AND FUNCTIONAL CHLORINATION SYSTEM.



REPLACE 0-10 PPM CHLORINE GAS DETECTOR INSIDE CHEMICAL ROOM AND REMOTE MOUNTED ONE CHANNEL DISPLAY OUTSIDE CHEMICAL ROOM. DISPLAY TO HAVE FLASHING SCREEN AND AUDIBLE HORN UPON ALARM.

PROJECT:
WWTP IMPROVEMENTS

DATE:
FEBRUARY 2019

OWNER:
CITY OF MAYFLOWER

SCALE: $\frac{1}{16}'' = 1' - 0''$

ADJUST ACCORDINGLY

CWB
Engineers, Inc.

-Designing a Better Arkansas-

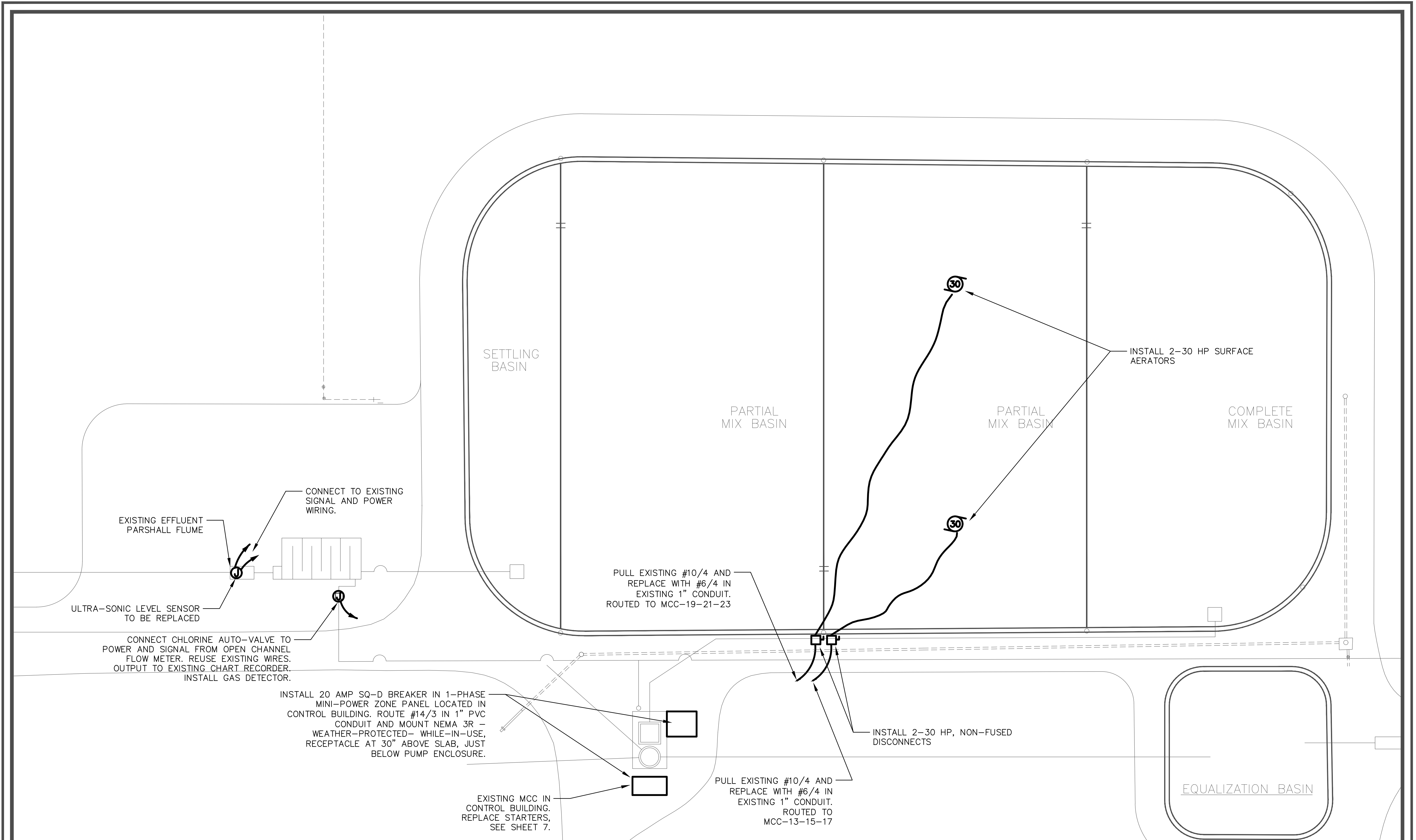
1915 Highway 25B
Heber Springs, AR 72543

phone: (501) 362-3744
cell: (501) 766-9832
email: kbreckenridge@cwbenigneers.com

1/31/19

CHLORINATOR PLAN

SHEET NO.
5



PROJECT:
WWTP IMPROVEMENTS

DATE:
FEBRUARY 2019

OWNER:
CITY OF MAYFLOWER

SCALE: 1" = 20'

ADJUST ACCORDINGLY

CWB
Engineers, Inc.

-Designing a Better Arkansas-

1915 Highway 25B
Heber Springs, AR 72543

phone: (501) 362-3744
cell: (501) 766-9832
email: kbreckenridge@cwbenigneers.com

STATE OF ARKANSAS
REGISTERED PROFESSIONAL ENGINEER
No. 13831
KYLE BRECKENRIDGE
1/31/19

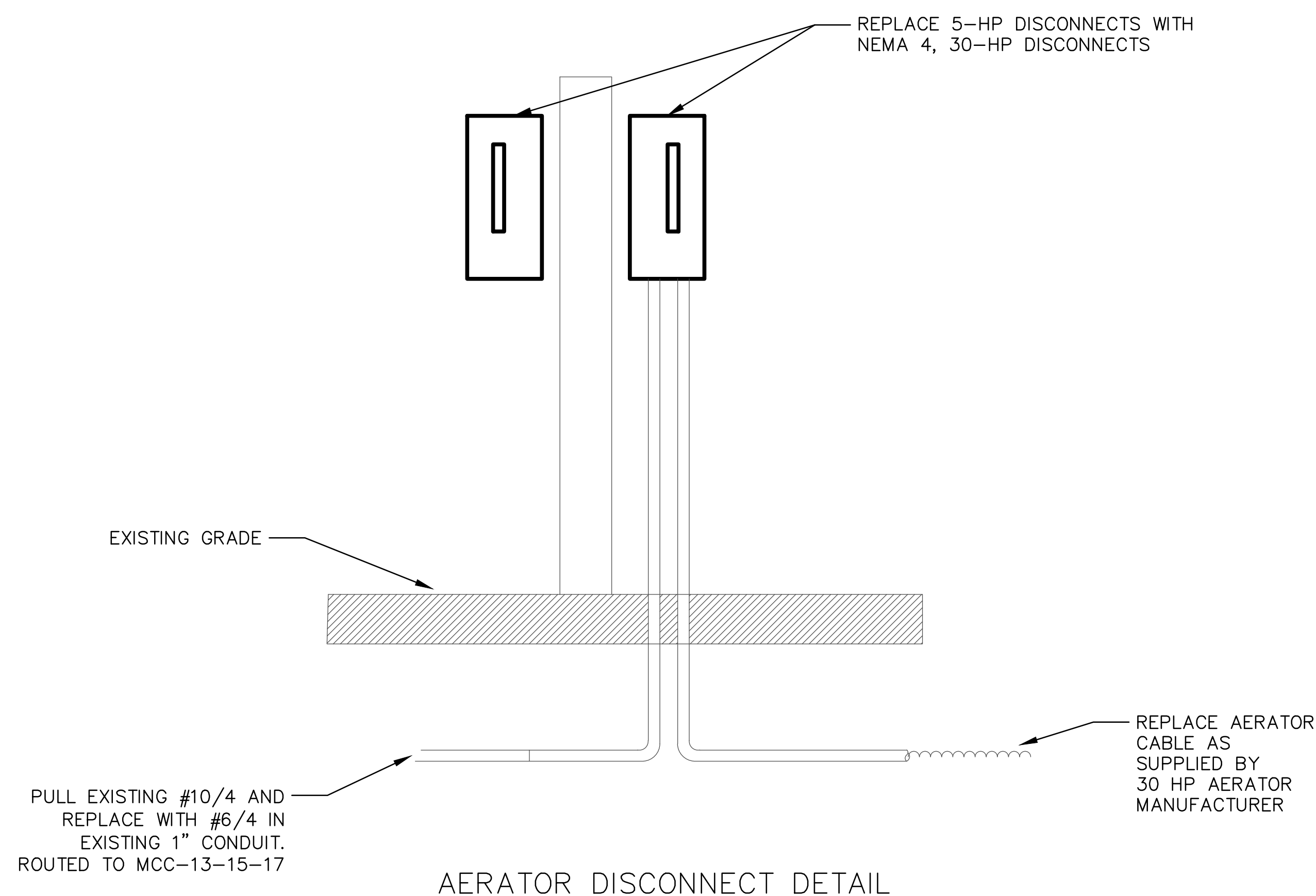
ELECTRICAL PLAN I

SHEET NO.
6

MOTOR CONTROL CENTER MCC

A/B BUL. 2100 MOTOR CONTROL CENTER. EACH STARTER SHALL HAVE H-O-A SWITCH, PILOT LIGHT, & PHASE FAILURE PROTECTION

CIRC NO.	STARTER NEMA SIZE	LOAD SERVED	LOAD SERVED	CIRC NO.	STARTER NEMA SIZE
1	1	AERATOR 5 HP	AERATOR 25 HP	2	2
3	-	-	-	4	-
5	-	-	-	6	-
7	1	AERATOR 5 HP	AERATOR 25 HP	8	2
9	-	-	-	10	-
11	-	-	-	12	-
13	3	AERATOR 30 HP	INFLUENT PUMP 5 HP	14	5hp VFD
15	-	-	-	16	-
17	-	-	-	18	-
19	3	AERATOR 30 HP	INFLUENT PUMP 5 HP	20	5hp VFD
21	-	-	-	22	-
23	-	-	-	24	-
25	1	W3 PUMP	SPARE	26	2
27	-	-	-	28	-
29	-	-	-	30	-
31	1	W3 PUMP		32	
33	-	-		34	
35	-	-		36	
37	20/3P CB	A/C UNIT	PANEL LA	38	60/2P CB
39	-	-	-	40	-
41	-	-		42	

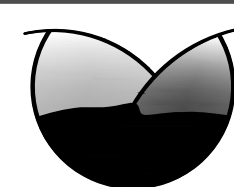
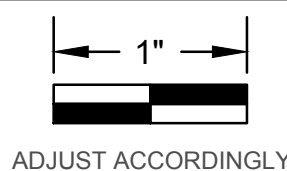


PROJECT:
WWTP IMPROVEMENTS

DATE:
FEBRUARY 2019

OWNER:
CITY OF MAYFLOWER

SCALE: 1/16" = 1'-0"

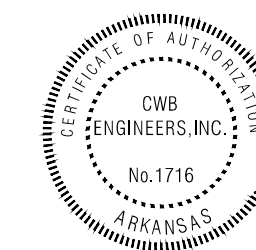


CWB
Engineers, Inc.

-Designing a Better Arkansas-

1915 Highway 25B
Heber Springs, AR 72543

phone: (501) 362-3744
cell: (501) 766-9832
email: kbreckenridge@cwbenigneers.com



1/31/19

ELECTRICAL PLAN II

SHEET NO.

7