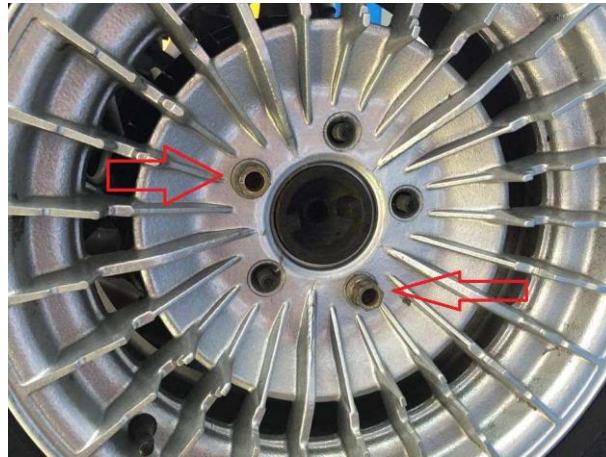
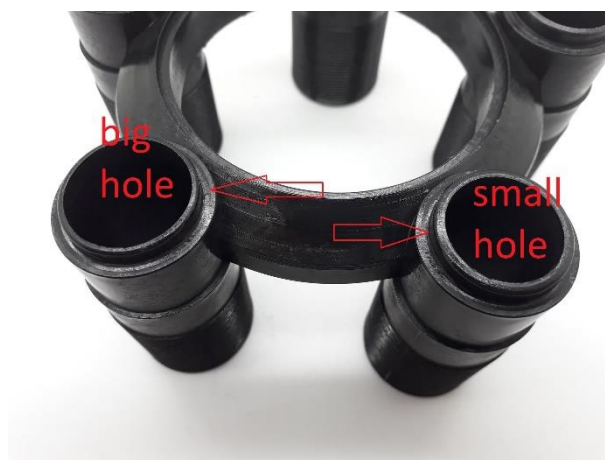


KRW PLASTIC UNIVERSAL 15" HUBCAP KIT INSTALLATION STEPS

1. Fit the rim on the car using two of the old OEM nuts. Nuts must be installed as in the photo below (not contiguous)



2. Install the plastic lower bracket, taking care to install it in such a way that the larger holes correspond with the original nuts previously installed, so that they can pass through. Then fix the bracket to the wheel with flanged bolts supplied in correspondency of the three bigger holes



3. Install the cap on the bracket until it reaches the desired position.
4. Remove carefully the three flanged bolts previously installed and install the five zip ties supplied on the appropriate grooves in order to keep the correct distance between the cap and bracket: now the cap and bracket are a single piece.



5. Reinstall the complete assembly again and the installation is complete. You need to remove the zip ties only if you want to reinstall the caps to a different style rims.