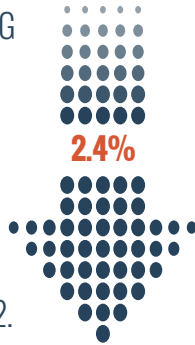


PETTIS COUNTY MISSOURI

Behavioral Health SNAPSHOT



BINGE DRINKING IN PETTIS COUNTY DECREASED FROM 11.9% IN 2011 TO 9.5% IN 2012.

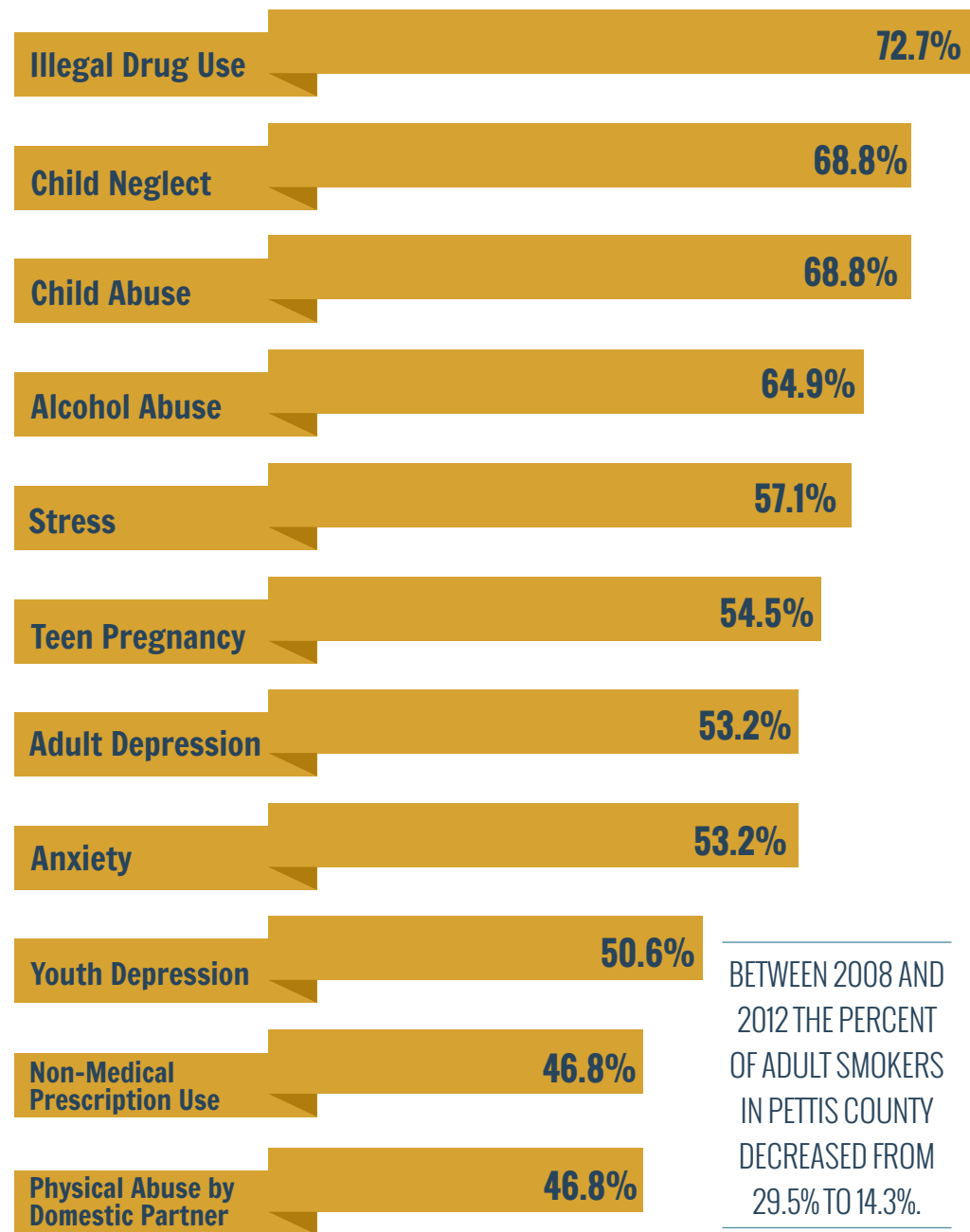


42,319
Pettis County
Population in 2012

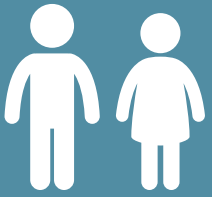


TOP TEN PETTIS COUNTY HEALTH PRIORITIES

As selected in a survey by local community leaders.



BETWEEN 2008 AND 2012 THE PERCENT OF ADULT SMOKERS IN PETTIS COUNTY DECREASED FROM 29.5% TO 14.3%.



37.5

Incidents of child abuse reported for every 1,000 children in Pettis County in 2012.



12

Incidents of domestic violence for every 1,000 people reported in Pettis County in 2012.



23.8%

of Pettis County adults were diagnosed with depression in 2012.

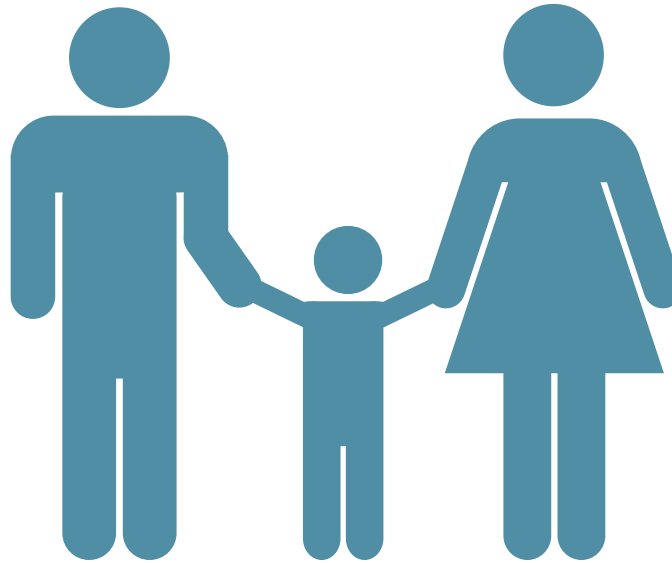
PETTIS COUNTY MISSOURI Behavioral Health SNAPSHOT

DOMESTIC VIOLENCE

PETTIS COUNTY	MISSOURI
12	6.8
Incidents of domestic violence for every 1,000 people reported in 2012.	Incidents of domestic violence for every 1,000 people reported in 2012.

BINGE DRINKERS

PETTIS COUNTY	MISSOURI
11.9% - 9.5%	12.1% - 11.5%
Binge drinkers decreased from 11.9% in 2011 to 9.5% in 2012.	Binge drinkers decreased from 12.1% in 2011 to 11.54% in 2012.



ADULT DEPRESSION

PETTIS COUNTY	MISSOURI
23.8%	20.7%
of adults were diagnosed with depression in 2012.	of adults were diagnosed with depression in 2012.

CHILD ABUSE

PETTIS COUNTY	MISSOURI
37.5	35.9
incidents of child abuse reported for every 1,000 children in 2012.	incidents of child abuse reported for every 1,000 children in 2012.

PETTIS COUNTY BEHAVIORAL HEALTH RELATIVE TO MISSOURI

BETTER THAN MISSOURI AND GETTING BETTER

Binge Drinking
Poor Mental Health Days
Smoking
Teen Pregnancy

BETTER THAN MISSOURI AND GETTING WORSE

Drunk Driving Accidents
STDs

WORSE THAN MISSOURI AND GETTING BETTER

Depression
Child Abuse and Neglect
Heavy Drinking
Suicide
Youth Drinking

WORSE THAN MISSOURI AND GETTING WORSE

Depression among Medicare Recipients
Drunk Driving Deaths
Domestic Violence

This snapshot infographic summarizes data on top community behavioral health priorities in Pettis County, Missouri as identified by its community leaders as of June 2014 and is a product of the CAPE Project (Community Assessment and Education to Promote Behavioral Health Planning and Evaluation). The information provided in this snapshot corresponds to an in depth community profile on Pettis County, based on the 2014 CAPE survey as well as secondary sources such as County Health Rankings, National Highway Traffic Safety Administration, Missouri State Highway Patrol, State of Missouri Department of Health and Senior Services, Centers for Disease Control and Prevention, Centers for Medicare and Medicaid Services, and Behavioral Risk Factor Surveillance System. CAPE is dedicated to identifying and sharing best practices for benchmarking community behavioral health and is funded by the Department of Health and Human Services' Substance Abuse and Mental Health Services Administration (SAMHSA) and facilitated by the United States Department of Agriculture's National Institute of Food and Agriculture.

CAPE | Community Assessment and Education to Promote Behavioral Health Planning and Evaluation
VISIT US ON THE WEB healthbench.info