

ECP Drafting Inc.

6254 DALTON ST
 SPRING HILL, FL 34606
 Ph: 727-271099
 Fax: 352-556-2491
 ecpdraftinginc@gmail.com

RL SQUARED CONSTRUCTION
 SPEC HOUSE
 1402 DORSETT PL
 TAMPA, FL



13540 N FLORIDA AVE
 SUITE 201
 TAMPA, FL 33613
 PHONE: 813-477-4829
 robmetrick@rlsquared.org

THIS DRAWING IS THE PROPERTY OF ECP DRAFTING INC. UNLESS OTHERWISE PROVIDED FOR BY THE CONTRACT THE CONTENTS OF THIS DRAWING IS CONFIDENTIAL AND SHALL NOT BE TRANSMITTED TO ANY OTHER PARTY EXCEPT AS AGREED TO BY ECP DRAFTING INC'S COPYRIGHT 2014

DATE: DATE

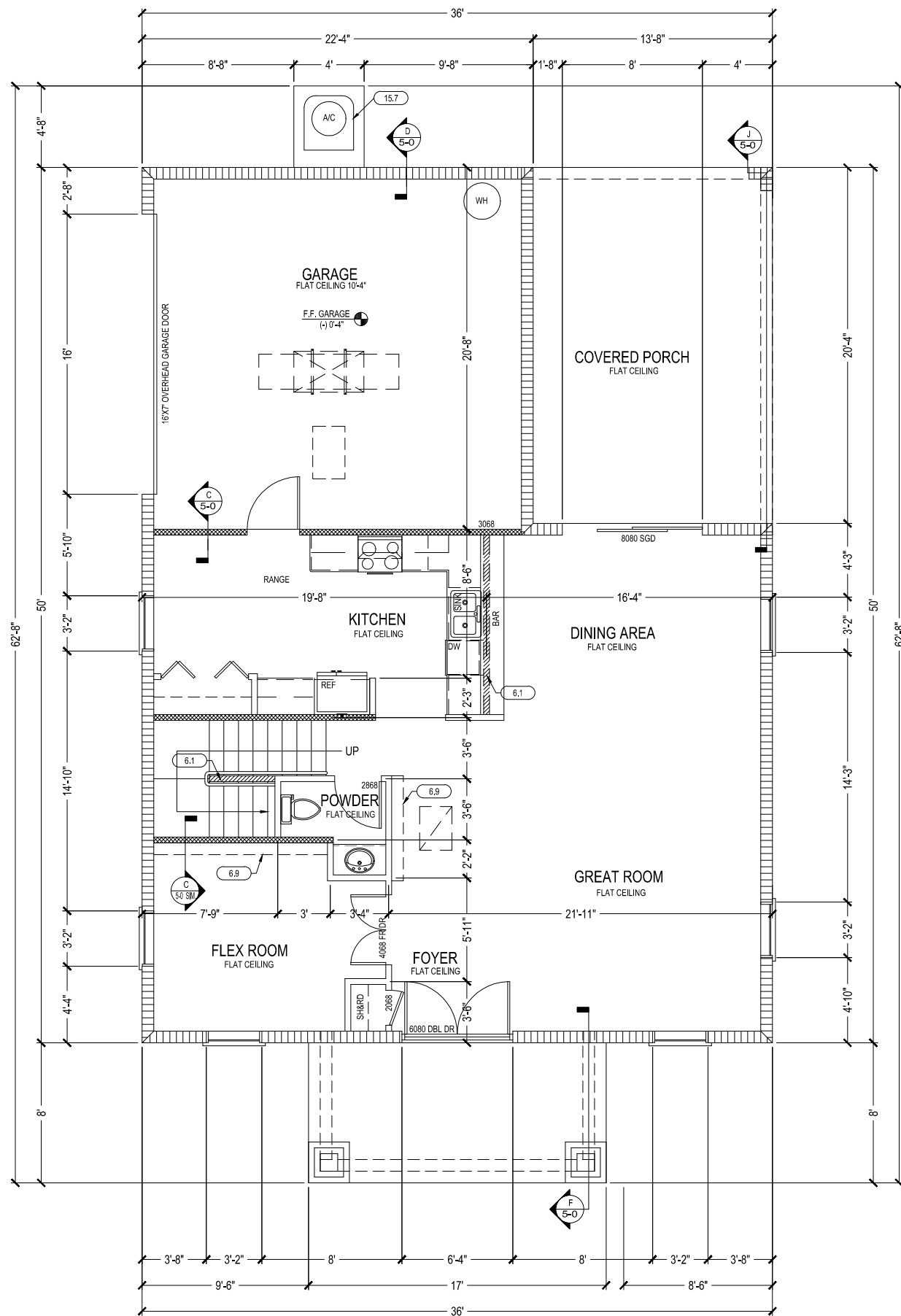
SCALE: 1/8"=1'-0"

DRAWN BY: ECP

TITLE
EXTERIOR ELEVATIONS

JOB #:
 SHEET NO.

4-0



KEYNOTES:

NOTE: ONLY NOTES INDICATED ON FLOOR PLAN ARE USED

DIVISION 3 - CONCRETE

- 3.1 MIN. 6" STEP DOWN
- 3.2 MIN. 4" STEP DOWN
- 3.3 PRECAST LINTEL
- 3.4 MAX 1/2" STEP DOWN

DIVISION 4 - MASONRY

- 4.1a 12" ROUND BLOCK COLUMN W/ 16" SQ. BASE SEE DETAIL "F", SHEET 5-0
- 4.1b 16" ROUND BLOCK COLUMN W/ 24" SQ. BASE SEE DETAIL "F", SHEET 5-0
- 4.1c 8"x8" BLOCK COLUMN W/ 24"x24" SQ. BAS SEE DETAIL "F", SHEET 5-0
- 4.1d 1/2 OF 16" ROUND BLOCK COLUMN W/ 24"x12" SQ. BASE SEE DETAIL "F", SHEET 5-0
- 4.1e 1/2 OF 12" ROUND BLOCK COLUMN W/ 16"x16" SQ. BASE SEE DETAIL "F", SHEET 5-0
- 4.2 16" BLOCK COLUMN - SEE DETAIL "F", SHEET 5-0
- 4.2a 8" BLOCK COLUMN - SEE DETAIL "T", SHEET 5-0
- 4.2b 16"x16"x8" BLOCK COLUMN SEE DETAIL "F", SHEET 5-0
- 4.3 FRONT ENTRY - SEE DETAIL "F" SHEET 5-0
- 4.3a RAISED FRONT ENTRY - SEE DETAIL "F" SHEET 5-0 & "C" SHEET 5-1
- 4.4 FILLED CELLS - SEE FOUNDATION PLAN & DETAIL "A", SHEET 5-1
- 4.7 STUCCO QUOINS SEE DETAIL ON SHEET 4-0
- 4.8 FLOW THRU VENT. SEE CALCULATION ON SHEET 1-1

DIVISION 6 - WOODS & PLASTICS

- 6.1 41" HIGH WALL
- 6.2 4" HIGH WALL
- 6.3 6" HIGH WALL
- 6.4 7" HIGH WALL
- 6.5 8" HIGH WALL
- 6.6 9" HIGH WALL
- 6.7 4" x 6" POST TO CEILING - SEE DETAIL "C", SHEET 5-2 - Section A-A (a)
- 6.7a 4" x 6" POST TO CEILING - SEE DETAIL "C", SHEET 5-2 - Section A-A (b)
- 6.7b 4" x 6" POST TO CEILING - SEE DETAIL "C", SHEET 5-2 - Section A-A (c)
- 6.7c 4" x 6" POST 41" HIGH - SEE DETAIL "C", SHEET 5-2 - Section A-A (c)
- 6.7d 4" x 6" POST 48" HIGH - SEE DETAIL "C", SHEET 5-2 - Section A-A (c)
- 6.8 CEILING TO BE FRAMED @ 8'-0" A.F.F.
- 6.9 8" PLANT SHELF 8" A.F.F. - SEE DETAIL "J" SHEET 5-2
- 6.10 22" x 36" ATTIC ACCESS
- 6.10a ATTIC ACCESS - PULL DOWN STEPS - 54" x 22 1/2"
- 6.11 FRAME BLOCKING FOR CABINET INSTALLATION - SEE DETAIL "F" SHEET 5-2 OR 1-1E
- 6.13 6" PLUMBING WALL
- 6.13a 8" WALL
- 6.14 (2) 2x8 YP WOOD BEAMS - ADD 1/2" OSB / CDX
- 6.15 (2) 2x12 YP WOOD BEAMS - ADD 1/2" OSB / CDX
- 6.15a (3) 2x12 YP WOOD BEAMS - ADD (2) LAYERS 1/2" OSB / CDX
- 6.16 ART NICHE - SEE DETAIL "H" ON SHEET 5-2
- 6.16a HALL SHELF SEE DETAIL "I" ON SHEET 5-2
- 6.17 KNEE-WALL (SEE SHEET 3-1 DETAIL "G")
- 6.18 4x4 P.T. WOOD COLUMN
- 6.19 OPENING TO BE EASY ARCH - SEE SHEET 5-2 DETAIL "K"
- 6.20 SEE DETAIL "D" SHEET 5-1 FOR HANDRAIL, RISER AND TREAD INFO.

DIVISION 8 - DOORS, WINDOWS & GLASS

- 8.1 EMERGENCY EGRESS
- 8.2 GARAGE DOOR ATTACHMENT - SEE DETAIL "B", SHEET 6-0
- 8.3 EXTERIOR DOOR ATTACHMENT - SEE DETAIL "B", SHEET 6-0
- 8.4 20 min. FIRE RATED DOOR
- 8.5 SEE DETAIL "E" SHEET 5-0 FOR BEARING WALL OPENINGS
- 8.6 RADIUS WINDOW - SEE DETAIL "F", SHEET 6-0
- 8.8 TEMPERED GLASS SHOWER ENCLOSURE

DIVISION 10 - SPECIALTIES

- 10.1 MEDICINE CABINET - ROUGH OPENING 14 1/2" x 18 1/2"
- 10.1a WALL MOUNTED MIRROR WIDTH OF VANITY, 42" TALL
- 10.2 ALL A/C DRAINS TO BE RUN ABOVE GROUND, AIR HANDLER 26 GA STEEL, SMOKE AND FIRE PENETRATION AND DUCTING COMPLIES WITH FBC R 309.1.1
- 10.4 TOWEL BAR TO BE 60" ABOVE FINISH FLOOR UNLESS NOTED OTHERWISE
- 10.5 SURFACE MOUNTED TOILET PAPER HOLDER TO BE 24" ABOVE FFE
- 10.6 TOWEL BAR TO BE 32" ABOVE TOP OF GARDEN TUB
- 10.7 SOAP DISH
- 10.8 TOWEL BAR TO BE 42" ABOVE TOP OF STANDARD TUB
- 10.9 TOWEL RING TO BE 15" ABOVE VANITY COUNTER TOP
- 10.10 PRE-FAB FIBERGLASS TUB/SHOWER COMBINATION
- 10.11 PRE-FAB FIBERGLASS SHOWER ENCLOSURE
- 10.12 INSTALL GRAB BAR PER F.B.C. 2010

DIVISION 15 - MECHANICAL / PLUMBING

- 15.4 PLUMBING ACCESS 12"x12"
- 15.4a JETTED TUB MOTOR ACCESS 18"x18"
- 15.7 SECURE A/C TO PAD W/ (3) #14 SCREWS W/ GASKETED WASHERS EACH SIDE OF UNIT
- 15.8 UPGRADE TO JETTED GARDEN TUB
- 15.11 HOSE BIBB
- 15.12 WASHER ALWAYS TO LEFT OF DRYER
- 15.14 ICE MAKER LINE W/ SHUT OFF VALVE TO BE LOCATED 12" A.F.F.
- 15.15 SEE PLUMBING DETAIL "D" SHEET 5-2
- 15.17 VENT DRYER THROUGH ROOF, SEE DETAIL "H" ON SHEET 3-1
- 15.17a VENT DRYER THROUGH WALL, SEE DETAIL "H" ON SHEET 3-1
- 15.18 VENTLESS RANGE HOOD
- 15.18a VENTED RANGE HOOD
- 15.18b INSTALL MICROWAVE
- 15.19 HANSEN BOX

DIVISION 17 - CUSTOM ONLY WHEN NOTED ON PLANS

- 17.1 FIREPLACE INSTALL PER MANUFACTURER SPEC'S
- 17.2 INSTALL GARAGE DOOR OPENER
- 17.3 WINDOWS TO BE DOUBLE PANE INSULATED GLASS
- 17.5 TOILET TO BE ADA COMPLIANT
- 17.6 BUMP UP KITCHEN CABINETS AT MICROWAVE
- 17.7 CROWN MOLDING FOR CABINETRY
- 17.8 CROWN MOLDING FOR WALLS
- 17.9 FLUSH WINDOW SILL
- 17.10 ROUNDED CORNER BEAD FOR DRYWALL
- 17.11 CHAIR RAIL @ 42" A.F.F.
- 17.12 ALUMINUM SCREEN ENCLOSURE
- 17.13 36" TALL VANITY
- 17.14 5-1/4" BASE MOLD

CEILING HEIGHT 10'-0"

SQUARE FOOTAGE	
GROUND FLOOR	1061 SQFT
SECOND FLOOR	998 SQFT
GARAGE	461 SQFT
FRONT ENTRY	152 SQFT
COVERED PORCH	278 SQFT
TOTAL	2950 SQFT

SEE SHT. 6-0 FOR WINDOW / DOOR SCHEDULES

SEE DTL. "H" SHT. 5-1 FOR WINDOW HURRICANE PROTECTION SCHEDULE.

WALL LEGEND	
	INT. BEARING WALL
	INTERIOR WALL
	CMU WALL
	EXTERIOR WOOD WALL
	6" PLUMBING WALL UNLESS NOTED OTHERWISE
	RAISED ENTRY BEARING WALL
	WALL HT. VARIES (SEE PLAN)

FLOOR LEGEND	
	TILED FLOORS
	SQUARE HATCH PATTERN ON DRAWINGS INDICATE AREA TO BE TILED. REFER TO COLOR SHEET FOR SPECIFICATIONS (SIZE, TYPE ETC)

NOTE:
PLUMBER TO VERIFY SEWER LINE LOCATION WITH SUPER INTENDANT

NOTE:
ALL PLUMBING STUB UPS TO BE IN WALL NOT UNDER CABINETS

NOTE:
ALL ANGLES ARE 45° UNLESS NOTED OTHERWISE

NOTE:
"RISK" CATEGORY II

NOTE:
CONSTRUCTION TYPE V-B

ECP Drafting Inc.

6254 DALTON ST
SPRING HILL, FL 34606
Ph: 727-271-0999
Fax: 352-556-2491
ecpdraftinginc@gmail.com

RL SQUARED CONSTRUCTION
SPEC HOUSE
1402 DORSETT PL
TAMPA, FL



13540 N FLORIDA AVE
SUITE 201
TAMPA, FL 33613
PHONE: 813-477-4829
robmeick@rlsquared.org

THIS DRAWING IS THE PROPERTY OF ECP DRAFTING INC. UNLESS OTHERWISE PROVIDED FOR BY THE CONTRACT THE CONTENTS OF THIS DRAWING IS CONFIDENTIAL AND SHALL NOT BE TRANSMITTED TO ANY OTHER PARTY EXCEPT AS AGREED TO BY ECP DRAFTING INC'S COPYRIGHT 2014

DATE:	DATE
SCALE:	1/8"=1'-0"
DRAWN BY:	ECP
TITLE:	FLOOR PLAN
JOB #:	
SHEET NO.	1-1

6254 DALTON ST
 SPRING HILL, FL 34606
 Ph: 727-271-0999
 Fax: 352-556-2491
 ecpdraftinginc@gmail.com

RL SQUARED CONSTRUCTION
 SPEC HOUSE
 1402 DORSETT PL
 TAMPA, FL



13540 N FLORIDA AVE
 SUITE 201
 TAMPA, FL 33613
 PHONE: 813-477-4829
 robmeick@rlsquared.org

THIS DRAWING IS THE PROPERTY OF ECP DRAFTING INC. UNLESS OTHERWISE PROVIDED FOR BY THE CONTRACT THE CONTENTS OF THIS DRAWING IS CONFIDENTIAL AND SHALL NOT BE TRANSMITTED TO ANY OTHER PARTY EXCEPT AS AGREED TO BY ECP DRAFTING INC'S COPYRIGHT 2014

DATE:	DATE
SCALE:	1/8"=1'-0"
DRAWN BY:	ECP
TITLE	FLOOR PLAN
JOB #:	
SHEET NO.	1-1A

CEILING HEIGHT 8'-0"

SQUARE FOOTAGE	
GROUND FLOOR	1061 SQFT
SECOND FLOOR	998 SQFT
GARAGE	398 SQFT
FRONT ENTRY	152 SQFT
COVERED PORCH	268 SQFT
TOTAL	2877 SQFT

SEE SHT. 6-0 FOR WINDOW / DOOR SCHEDULES
 SEE DTL. "H" SHT. 5-1 FOR WINDOW HURRICANE PROTECTION SCHEDULE.

WALL LEGEND	
	INT. BEARING WALL
	INTERIOR WALL
	CMU WALL
	EXTERIOR WOOD WALL
	6" PLUMBING WALL UNLESS NOTED OTHERWISE
	RAISED ENTRY BEARING WALL
	WALL HT. VARIES (SEE PLAN)

FLOOR LEGEND	
	TILED FLOORS
	SQUARE HATCH PATTERN ON DRAWINGS INDICATE AREA TO BE TILED. REFER TO COLOR SHEET FOR SPECIFICATIONS (SIZE, TYPE ETC)

NOTE:
 PLUMBER TO VERIFY SEWER LINE LOCATION WITH SUPER INTENDANT

NOTE:
 ALL PLUMBING STUB UPS TO BE IN WALL NOT UNDER CABINETS

NOTE:
 ALL ANGLES ARE 45° UNLESS NOTED OTHERWISE

NOTE:
 "RISK" CATEGORY II

NOTE:
 CONSTRUCTION TYPE V-B

KEYNOTES: NOTE: ONLY NOTES INDICATED ON FLOOR PLAN ARE USED

DIVISION 3 - CONCRETE

- 3.1 MIN. 6" STEP DOWN
- 3.2 MIN. 4" STEP DOWN
- 3.3 PRECAST LINTEL
- 3.4 MAX 1/2" STEP DOWN

DIVISION 4 - MASONRY

- 4.1a 12" ROUND BLOCK COLUMN W/ 16" SQ. BASE
SEE DETAIL "F", SHEET 5-0
- 4.1b 16" ROUND BLOCK COLUMN W/ 24" SQ. BASE
SEE DETAIL "F", SHEET 5-0
- 4.1c 8"x8" BLOCK COLUMN W/ 24"x24" SQ. BAS
SEE DETAIL "F", SHEET 5-0
- 4.1d 3/4" OF 16" ROUND BLOCK COLUMN W/ 24"x12" SQ. BASE
SEE DETAIL "F", SHEET 5-0
- 4.1e 1/2" OF 12" ROUND BLOCK COLUMN W/ 16"x16" SQ. BASE
SEE DETAIL "F", SHEET 5-0
- 4.2 16" BLOCK COLUMN - SEE DETAIL "F", SHEET 5-0
- 4.2a 8" BLOCK COLUMN - SEE DETAIL "F", SHEET 5-0
- 4.2b 15"x16"x8" BLOCK COLUMN SEE DETAIL "F", SHEET 5-0
- 4.3 FRONT ENTRY - SEE DETAIL "F" SHEET 5-0
- 4.3a RAISED FRONT ENTRY - SEE DETAIL "F" SHEET 5-0 & "G" SHEET 5-1
- 4.4 FILLED CELLS - SEE FOUNDATION PLAN & DETAIL "A", SHEET 5-1
- 4.7 STUCCO QUOINS SEE DETAIL ON SHEET 4-0
- 4.8 FLOW THRU VENT. SEE CALCULATION ON SHEET 1-1

DIVISION 6 - WOODS & PLASTICS

- 6.1 4 1/2" HIGH WALL
- 6.2 4" HIGH WALL
- 6.3 6" HIGH WALL
- 6.4 7" HIGH WALL
- 6.5 8" HIGH WALL
- 6.6 9" HIGH WALL
- 6.7 4" x 6" POST TO CEILING - SEE DETAIL "C", SHEET 5-2 - Section A-A (a)
- 6.7a 4" x 6" POST TO CEILING - SEE DETAIL "C", SHEET 5-2 - Section A-A (b)
- 6.7b 4" x 6" POST TO CEILING - SEE DETAIL "C", SHEET 5-2 - Section A-A (c)
- 6.7c 4" x 6" POST 41" HIGH - SEE DETAIL "C", SHEET 5-2 - Section A-A (d)
- 6.7d 4" x 6" POST 48" HIGH - SEE DETAIL "C", SHEET 5-2 - Section A-A (e)
- 6.8 CEILING TO BE FRAMED @ 8'-0" A.F.F.
- 6.9 8" PLANT SHELF @ A.F.F. - SEE DETAIL "J" SHEET 5-2
- 6.10 22" x 36" ATTIC ACCESS
- 6.10a ATTIC ACCESS - PULL DOWN STEPS - 54" x 22"
- 6.11 FRAME BLOCKING FOR CABINET INSTALLATION - SEE DETAIL "F" SHEET 5-2 OR 1-1E
- 6.13 6" PLUMBING WALL
- 6.13a 9" WALL
- 6.14 (2) 2x6 YP WOOD BEAMS - ADD 1/2" OSB / CDX
- 6.15 (2) 2x12 YP WOOD BEAMS - ADD 1/2" OSB / CDX
- 6.15a (3) 2X12 YP WOOD BEAMS - ADD (2) LAYERS 1/2" OSB / CDX
- 6.16 ART NICHE - SEE DETAIL "H" ON SHEET 5-2
- 6.16a HALL SHELF - SEE DETAIL "H" ON SHEET 5-2
- 6.17 KNEE-WALL (SEE SHEET 3-1 DETAIL "C")
- 6.18 4x4 P.T. WOOD COLUMN
- 6.19 OPENING TO BE EASY ARCH - SEE SHEET 5-2 DETAIL "K"
- 6.20 SEE DETAIL "D" SHEET 5-1 FOR HANDRAIL, RISER AND TREAD INFO.

DIVISION 8 - DOORS, WINDOWS & GLASS

- 8.1 EMERGENCY EGRESS
- 8.2 GARAGE DOOR ATTACHMENT - SEE DETAIL "B", SHEET 6-0
- 8.3 EXTERIOR DOOR ATTACHMENT - SEE DETAIL "B", SHEET 6-0
- 8.4 20 min. FIRE RATED DOOR
- 8.5 SEE DETAIL "H" SHEET 5-0 FOR BEARING WALL OPENINGS
- 8.6 RADIUS WINDOW - SEE DETAIL "F", SHEET 6-0
- 8.8 TEMPERED GLASS SHOWER ENCLOSURE

DIVISION 10 - SPECIALTIES

- 10.1 MEDICINE CABINET - ROUGH OPENING 14 1/2" x 18 1/2"
- 10.1a WALL MOUNTED MIRROR WIDTH OF VANITY, 42" TALL
- 10.2 ALL A/C DRAINS TO BE RUN ABOVE GROUND. AIR HANDLER 25 GA STEEL. SMOKE AND FIRE PENETRATION AND DUCTING COMPLES WITH FBC R 308.1.1
- 10.4 TOWEL BAR TO BE 60" ABOVE FINISH FLOOR UNLESS NOTED OTHERWISE
- 10.5 SURFACE MOUNTED TOILET PAPER HOLDER TO BE 24" ABOVE FIN.
- 10.6 TOWEL BAR TO BE 32" ABOVE TOP OF GARDEN TUB
- 10.7 SOAP DISH
- 10.8 TOWEL BAR TO BE 42" ABOVE TOP OF STANDARD TUB
- 10.9 TOWEL RING TO BE 15" ABOVE VANITY COUNTER TOP
- 10.10 PRE-FAB FIBERGLASS TUB-SHOWER COMBINATION
- 10.11 PRE-FAB FIBERGLASS SHOWER ENCLOSURE
- 10.12 INSTALL GRAB BAR PER F.B.C. 2010

DIVISION 15 - MECHANICAL / PLUMBING

- 15.4 PLUMBING ACCESS 12"x12"
- 15.4a JETTED TUB MOTOR ACCESS 18"x18"
- 15.7 SECURE A/C TO PAD W/ (3) #14 SCREWS W/ GASKETED WASHERS EACH SIDE OF UNIT
- 15.8 UPGRADE TO JETTED GARDEN TUB
- 15.11 HOSE BIBB
- 15.12 WASHER ALWAYS TO LEFT OF DRYER
- 15.14 ICE MAKER LINE W/ SHUT OFF VALVE TO BE LOCATED 12" A.F.F.
- 15.15 SEE PLUMBING DETAIL "D" SHEET 5-0
- 15.17 VENT DRYER THROUGH ROOF. SEE DETAIL "H" ON SHEET 3-1
- 15.17a VENT DRYER THROUGH WALL. SEE DETAIL "H" ON SHEET 3-1
- 15.18 VENTLESS RANGE HOOD
- 15.18a VENTED RANGE HOOD
- 15.18b INSTALL MICROWAVE
- 15.19 HANSEN BOX

DIVISION 17 - CUSTOM ONLY WHEN NOTED ON PLANS

- 17.1 FIREPLACE INSTALL PER MANUFACTURER SPECS
- 17.2 INSTALL GARAGE DOOR OPENER
- 17.3 WINDOWS TO BE DOUBLE PANE INSULATED GLASS
- 17.5 TOILET TO BE ADA COMPLIANT
- 17.6 BUMP UP KITCHEN CABINETS AT MICROWAVE
- 17.7 CROWN MOLDING FOR CABINETRY
- 17.8 CROWN MOLDING FOR WALLS
- 17.9 FLUSH WINDOW SILL
- 17.10 ROUNDED CORNER BEAD FOR DRYWALL
- 17.11 CHAIR RAIL @ 42" A.F.F.
- 17.12 ALUMINUM SCREEN ENCLOSURE
- 17.13 36" TALL VANITY
- 17.14 5-1/4" BASE MOLD

