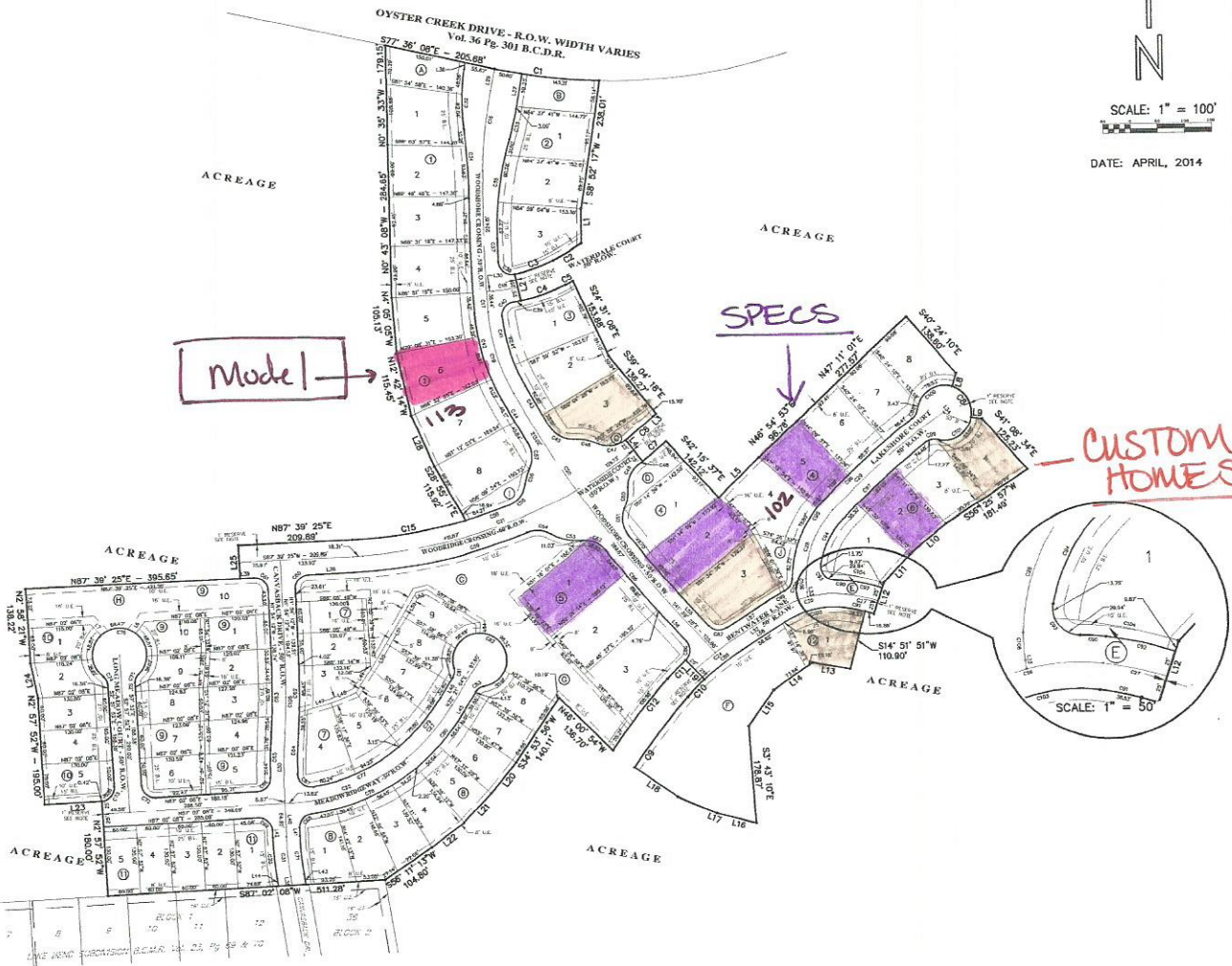




SCALE: 1" = 100'

DATE: APRIL, 2014



Curve Table with columns: Curve #, Radius, Length, Delta, Chord Bearing - Distance

Curve Table with columns: Curve #, Radius, Length, Delta, Chord Bearing - Distance

Curve Table with columns: Curve #, Radius, Length, Delta, Chord Bearing - Distance

Curve Table with columns: Curve #, Radius, Length, Delta, Chord Bearing - Distance

Line Table with columns: Line #, Bearing, Distance

Line Table with columns: Line #, Bearing, Distance

Line Table with columns: Line #, Bearing, Distance

GENERAL NOTES:

- 1. D.E. Indicates Drainage Easement.
2. U.E. Indicates Utility Easement.
3. B.L. Indicates Building Line.
4. R.O.W. Indicates Right-of-Way.
5. S.C.M.R. Indicates Brazoria County Map Record.
6. All drainage easements shall be kept clear of fences, buildings, vegetation, and other obstructions for the purpose of the erosion and maintenance of the drainage facility by the appropriate entity.
7. This subdivision is not directly affected by any previous zoning.
8. The coordinates shown herein are Texas South Central Zone No. 4204 State Plane Surface Coordinates (NAD83) and may be brought to grid by applying the following combined scale 0.999993303.
9. This property does not currently lie within the boundaries of the City of Dale, Texas and Neches Drainage District.
10. One-foot Reserve dedicated to the public in fee as a buffer separation between the side and end of streets which shall extend adjacent property the location of such dedication using that when the adjacent property is subdivided or re-subdivided in a recorded plat, the one-foot reserve shall in no event be less than the width of the street right-of-way purposes and the fee title thereto shall revert to and rest in the dedicant, his heirs, assigns or successors.
11. B.C.O.P.R. indicates Brazoria County Official Public Records.
12. B.C.C.F. indicates Brazoria County Clerk's File

RESERVE TABLE with columns: RESERVE DESIGNATION, RESERVE RESTRICTION, S.F. Includes rows A through J and a TOTAL row.

WOODSHORE SECTION ONE

A SUBDIVISION PLAT OF 27.48 ACRES OUT OF 305.31 ACRE TRACT OF LAND OUT OF JARED E. GRICE'S LEGUATES, ABSTRACT NO. 66

CITY OF CLUTE, BRAZORIA COUNTY, TEXAS

CONTAINING 12 BLOCKS - 67 LOTS - 10 RESERVES * OWNER *

DHK Clute, LLC

* SURVEYOR * PREJEAN & COMPANY LAND SURVEYING

* ENGINEER * OEDEN SERVICES, LLC CIVIL ENGINEERING