

# BlueLine

## INSTRUMENTS

Industrial & Domestic Flue Gas Instruments

Natural Gas Leak Detectors

Digital Temperature Meters

Data Logging Digital Pressure Meters

Data Logging Air Velocity Meters

Water Flow Measurement



Sales ■ Hire ■ Service  
Training ■ Advice ■ Support

BlueLine 01606 301840  
INSTRUMENTS.co.uk

# Flue Gas: Domestic

## BlueLyzer ST

The smallest, lightest, low cost flue-gas analyser in the UK for domestic and light industrial use. A unique filtration system in the sampling probe line ensures that your instrument stays dry all the time.

This, coupled with an optional fixed price service contract, makes the Bluealyzer instrument the most cost effective flue gas analyser available today.

Now with QR Code Data Handling, Scan QR Code for more information.



Control instrument, view and log data on PC, Phone or Tablet



Available on iTunes



ANDROID APP ON Google play

- Measures CO, O<sub>2</sub>, CO<sub>2</sub> flue gas and ambient temperature, draft /pressure
- Weighs 275g and measures 143 x 66 x 37mm
- TFT Colour Screen and simple push button control
- Complete with robust rubber protective case and magnets for boiler mounting
- Battery Life up to 12 Hours in 'Eco' mode
- Micro SD card for logging results and printing via your PC
- Separate Let-by and Tightness test function
- Separate dual temperature test function

## EuroPrinter

Infra red or Bluetooth printer for ALL BlueLine Analysers.

Use the optional printer to quickly and easily print your analysis reports.

Thermal printer adhesive labels are also available for affixing directly onto boilers or in their log books.



# Flue Gas: Domestic / Industrial

## EuroLyzer STx

The Eurolyzer STx is a high quality flue gas, temperature and pressure analyser designed for use on both domestic and industrial heating systems.

A unique 5 year O<sub>2</sub> sensor and optional low cost service contract ensures running costs are kept to a minimum.

The sampling probe with unique filtration system ensures your instrument stays dry.

Now with QR Code Data Handling, Scan QR Code for more information.



Control instrument, view and log data on PC, Phone or Tablet

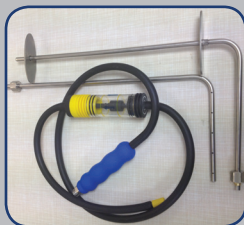


- Measures O<sub>2</sub>, CO, CO<sub>2</sub>, draft, flue gas and ambient temperature, efficiency and differential pressure with optional NO sensor available. Extended CO measuring range with H<sub>2</sub> compensation
- Bluetooth communication and SD Card for logging results and printing via your PC
- Separate programmes for pressure (+/-70Mbar for let-by/tightness/differential) and temperature
- Dial in operation with a high resolution TFT colour screen
- Infra-red and Bluetooth printer option available

## CPA-1 KIT AVAILABLE

Utilises same unique filtration system as all BlueLine FGA's =

**NO CONDENSATE  
BREAKTHROUGH**



**BlueLine**  
INSTRUMENTS.co.uk

Available to  
**HIRE or BUY**

# Flue Gas: Industrial

## MultiLyzer-STe

The Multilyzer is a multi sensor flue gas analyser ideally suited for checking and servicing medium and larger sized heating systems.

A unique 5 year O2 Sensor and optional low cost service contract ensure running costs are kept to a minimum.

The sampling probe with unique filtration system ensures your instrument stays dry and means it is also particularly suited for measurements on wood burning and solid fuel systems.

Now with QR Code Data Handling,  
Scan QR Code for more information.



Control instrument,  
view and log data  
on PC, Phone or  
Tablet



- Measures CO, O<sub>2</sub>, CO<sub>2</sub>, flue gas and ambient temperature, draft and efficiency with additional options for NO, NO<sub>2</sub>, SO<sub>2</sub> and high range CO
- Data logging to Micro SD Card
- Bluetooth Smart (BLE Low Energy) communication for smartphones and tablets
- Low cost service contract options
- Infra red and Bluetooth printer option available
- Direct reading Infra Red CO<sub>2</sub> Sensor Option

## Modular Probe System



Flexible Probe



Various  
probe lengths  
180-1500mm

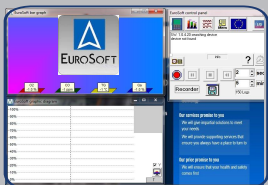
( standard on Multilyzer and Eurolyzer STx)  
Available for all BlueLine Flue Gas Instruments

# Flue Gas: Industrial

## MaxiLyzer NG+

A flue gas analysis computer with integrated printer and gas treatment unit housed in a robust and waterproof case makes this a versatile tool for use in medium and large heating systems.

The built in peltier cooler and filtration system ensures that your instrument stays moisture free and is particularly suitable for measuring highly water soluble gases such as  $\text{NO}_2$   $\text{SO}_2$ . The option to fit a heated line and probe as well a standard flue gas probe makes this portable instrument truly versatile.



- Measure  $\text{CO}$ ,  $\text{O}_2$ ,  $\text{CO}_2$ , flue gas and ambient temperature, draft and efficiency with additional options for  $\text{NO}$ ,  $\text{NO}_2$ ,  $\text{SO}_2$  and high range  $\text{CO}$
- The powerful battery provides 36 hours of use or mains operated for continuous use
- Eurosoft PC software for real time analysis
- fitted into rugged Peli case
- USB data download and Data memory for up to 100 measurements
- Fully complies with BS EN50379 (parts 1 & 2)

## Moisture Trap Filtration System

The unique moisture trap filtration system ensures that your instrument stays dry whilst still allowing the gas through.



Option of additional Heated Line and Probe



# Natural Gas Leak Detection

## GSP Units

### GSP1

The GSP1 provides an audible alarm which activates when gas levels reach 1% by volume ensuring you are aware of immediate gas leaks.

- 24 hour battery life with rechargeable batteries
- A scaled LED display for indication of gas concentrations from 20 – 2000ppm and % volume.
- Auto shut-off after 4 minutes



**The GSP1 and GSP3 identify methane, butane, propane and other flammable gases**

The sniffers can be used in gas pipes, connection pieces, fittings, gas meters, gas burners, gas tanks, drains and survey ducts

**Please Note:** The GSP 1 & 3 are precision instruments and not susceptible to moisture sensitivity problems often associated with this type of equipment.

### GSP3

On the GSP3, gas levels are indicated by 3 bright LEDs - at the same time an audible signal, proportional to the gas concentration is generated.

- 20ppm – 2,000ppm
- 10 hour battery life from 2x AA batteries
- LEDs indicate gas levels at 500, 1000 and 2000 ppm



# Temperature & Pressure

## S2600 Temperature & Humidity Instruments

This rugged and robust hand-held range of monitors displays temperature and relative humidity or single / dual temperature from industry standard 'K' type probe fittings.

4 models in the range:

- FT30 - Sensor integrated in the instrument housing
- FT40 - Sensor with flexible spiral cable
- FT50 - With integral sensor located on extension cable
- 2600 - Sensor options plug into the instrument housing. Single / Dual temperature capacity with range of 'K' type plug in probes.



## S2600 Digital Manometer Range

For measuring pressure, vacuum and differential pressure.

4 models in the range:

- 0-150 mbar
- 0-1000 mbar
- 0-5000 mbar
- 0-8000 mbar

Ideal for industrial, medical, air conditioning technology, ventilation systems or ducts.

Values displayed in: mbar, Pa, mmHg or PSI.



# Temperature & Pressure

## S4600-ST Data Logging Digital Manometer Range

A new generation of highly accurate Digital Manometers with Data Logging to Micro SD-Card or transportable data generated to an on-instrument readable QR Code. Option to print directly to Infra Red or Bluetooth printer. Can be controlled by and information viewed and logged on PC, Phone or Tablet. Barometric Pressure reading included.

6 models in the range:

S4602 0-20mBar

S4601 0-150mBar

S4610 0-1000mBar

S4650 0-5000mBar

S4680 0-8000mBar

S4699 0-16Bar

Now with QR Code Data Handling,  
Scan QR Code for more information.



## Capabilities



Print Via IR or Bluetooth



Pitot tube optional program



Datalog on SD



Multiple Connectivity  
Accessories



Control instrument,  
view and log data  
on PC, Phone or  
Tablet



**BlueLine**  
**INSTRUMENTS.co.uk**

Available to  
**HIRE** or **BUY**



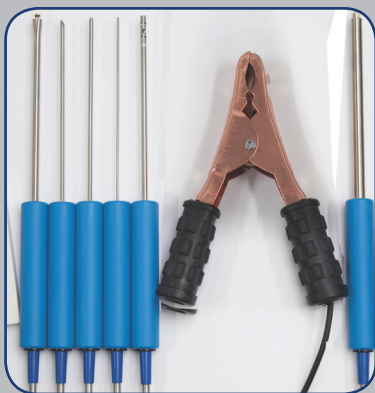
# Temperature & Pressure

## Accessories

### Temperature Probe Options

All with Industry standard 'K' type connectors

**CLAMP / SURFACE / LIQUID / INSERTION**



## Accessories

### Pressure Connectors & Kit options

Industry standard connectors, valves, plugs and tubing.

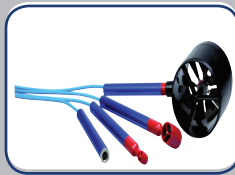


# Air Velocity

## BlueAir-ST Data Logging Digital Anemometer

With External Temperature & Humidity Sensor Option

A precise modular instrument for measuring air velocity, air flow, temperature and relative humidity. Available with a range of precision Swiss made Vane Probes of 11, 22 and 85mm plus an external temperature and humidity probe the unit is ideal for Duct or HVAC velocity measurement. The S4600-ST can be programmed with duct type (round or rectangular) and size (diameter or A x B) to work out an instant volume / flow rate.



QR Code Data Handling,  
Scan QR Code for more  
information.



Control instrument,  
view and log data  
on PC, Phone or  
Tablet



Print Via IR or Bluetooth



Datalog on SD

### DUCT MEASUREMENT



### HVAC MEASUREMENT



**BlueLine**  
INSTRUMENTS.co.uk

Available to  
**HIRE** or **BUY**

# Water Flow / Temperature Meter

## FlowTemp M

IDEAL FOR:-

Quickly setting operating flow rates to manufacturers specifications

Quickly checking you have adequate static and working pressure prior to installations



**MEASURES  
WATER FLOW &  
TEMPERATURE  
AT THE SAME TIME**

### General Data

Dimensions Housing (H x Ø): 250 x 58 mm

Weight: Approx. 232 g

Material: Plastic

### Technical Specifications

Temperature:

Measuring range: -10 °C ... + 110 °C

Resolution: 1°C

Accuracy: ± 2°C

Measuring principle: Glass tube filled with kerosene

### Volumetric flow:

Measuring range: 1.6 ... 15 l/min

Resolution:

0.05 l/min (1.6 - 4 l/min)

0.1 l/min (4-15 l/min)

Accuracy:

± 0.3 l (at 5 l/min)

5 % rdg (at 5 l/min)

Measuring principle: Tailback method

**BlueLine**  
**INSTRUMENTS.co.uk**

Available to  
**HIRE or BUY**

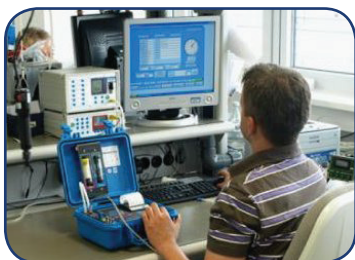
# Direct Service Facility

## Guaranteed 10 Day Turnaround

All BlueLine instruments are serviced and calibrated at our UK facility with a guaranteed turnaround or you get a free instrument to use whilst yours is being serviced.

We offer true fixed price Service Contract as well as standard annual calibration and service with the option of a 'Duration of Service' hire, so that you are never without an instrument.

Call us: 01606 301840



**BlueLine**  
**INSTRUMENTS**

**5 YEAR  
FIXED  
PRICE  
SERVICE  
CONTRACTS**



**FREE  
SHIPPING**

### Service Contracts include:

- All sensor and parts replacement
- Carriage to and from your premises
- Instrument re-warranted every year for the length of the contract

**BlueLine**  
**INSTRUMENTS.co.uk**

Available to  
**HIRE or BUY**

# BlueLine

## INSTRUMENTS

Industrial & Domestic Flue Gas Instruments

Natural Gas Leak Detectors

Digital Temperature Meters

Data Logging Digital Pressure Meters

Data Logging Air Velocity Meters

Water Flow Measurement



UK SALES & SERVICE

# BlueLine

INSTRUMENTS.co.uk

Unit 15 East Lane Cuddington Northwich Cheshire CW8 2QQ  
Tel: 01606 30840 Email: [service@bluelineinstruments.co.uk](mailto:service@bluelineinstruments.co.uk)

WEBSITE

