

POWERS' PICKS \$15

Volume 9 Issue 10

September 16-20, 2021

© 2021 BP Sports, LLC

CFB Best Bets now 46-25-1 65% Last 2 Years!
CFB Week 3 Best Bets Pg 3, NFL Best Bets Pg 8

Week 2 News and Notes!

For those of you that are new, in this section we'll recap what happened last week specifically, the misleading finals, the key injuries, the bad beats and the line moves. We'll include most of these recaps here, therefore you don't have to waste time reading about them in my game-by-game write-ups for the upcoming week. Without further adieu, here's a run down of what happened last week in the world of CFB.

Week 2 Trends Favorites-Dogs

Straight Up 72-10
 ATS 42-37-3

Straight Up 60-21
 ATS 40-38-3

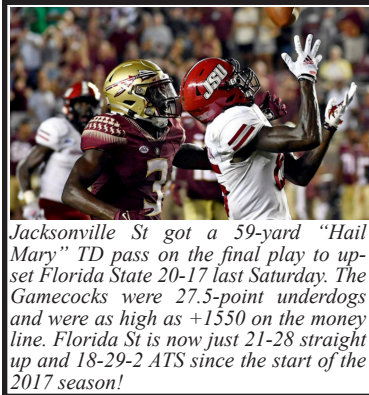
Over-Under 42-40

Season To-Date Favorites-Dogs

Straight Up 141-30
 ATS 81-84-6

Straight Up 122-40
 ATS 79-77-6

Over-Under 73-97-1



Jacksonville St got a 59-yard "Hail Mary" TD pass on the final play to upset Florida State 20-17 last Saturday. The Gamecocks were 27.5-point underdogs and were as high as +1550 on the money line. Florida St is now just 21-28 straight up and 18-29-2 ATS since the start of the 2017 season!

Largest Favorites to Cover:

- Oklahoma (-51) vs Western Carolina, 76-0
- Auburn (-49.5) vs Alabama St, 62-0
- Maryland (-48.5) vs Howard, 62-0
- West Virginia (-48.5) vs Long Island, 66-0
- Tulane (-47.5) vs Morgan St, 69-20
- Central Florida (-46) vs Bethune Cookman, 63-14
- Baylor (-44.5) vs Texas Southern, 66-7

Biggest Money line Upsets:

- Duquesne +1700 won 28-26 at Ohio (+28.5)
- Jacksonville St +1550 won 20-17 at Florida St (+27.5)
- Stanford +605 won 42-28 at USC (+17)
- Oregon +495 won 35-28 at Ohio St (+14.5)
- BYU +225 won 26-17 vs Utah (+7)

ATS Notables

- Stanford was +31 ATS points at USC in a 42-28 upset win (+17)
- Kent St was +31 ATS points vs VMI in a 60-10 win (-19)
- Houston was +29.5 ATS points at Rice in a 44-7 win (-7.5)
- The Georgia/Clemson game went UNDER the total by 38.5 points!
- The Wyoming/Northern Illinois game went OVER the total by 48.5 points!
- The Memphis/Arkansas St game went OVER the total by 40.5 points!
- The Texas A&M/Colorado game went UNDER the total by 33 points!
- Fresno St is 3-0 ATS this year with an average cover margin of 16.5 ppg!
- Connecticut is 0-3 ATS this year failing to cover the spread by 14.8 ppg!
- Hawaii is 0-3 ATS this year failing to cover the spread by 11.7 ppg!

Misleading Finals

Boise St beat UTEP 54-13. However, Boise only had 21-20 first down and 464-368 yard edges as they benefited from 6 UTEP TO's. Boise also got a 81-yard punt return TD.

Iowa upset Iowa St 27-17. However, Iowa St had 21-11 first down and 339-173 yard edges but were -4 in TO's. Iowa turned those four takeaways into 20 points.

Texas St beat FIU 23-17 in overtime. However, FIU had a 400-336 yard edge but were -3 in TO's. One of their 3 fumbles came at the Texas St 2-yard line.

Miss St beat NC State 24-10 as short home underdogs. However, NC State had a 335-316 yard edge but were -3 in TO's. Miss St got a 100-yard kick return TD on the first play.

Vandy upset Colorado St 24-21. However, Colorado St had a 445-342 yard edge including 207-104 on the ground. Colorado St missed 2 FG's and were stopped on downs at the Vandy 3-yard line.

Bad Beats

Army (-6) led WKU 35-14 with about 10 minutes to go. However, WKU got a TD with :22 left for the back-door in a 38-35 loss.

Houston beat Rice 44-7. No drama right? Well, Houston got a 91-yard interception return TD on the final play of the game to put the game over by a 0.5-point. Yikes!

Injuries/Personnel News

Boston College QB Phil Jurkovec is likely out for the season with a hand injury. Clemson LB Jake Vebables, S Nolan Turner and WR Joseph Ngata are all questionable vs Georgia Tech.

Florida St is banged up on the offensive line. Robert Smith and Maurice Smith are questionable and Dontae Lucas left the team.

Georgia QB JT Daniels (oblique) is questionable vs South Carolina and on Tuesday backup QB Stetson Bennett (back) was also listed as questionable.

Illinois QB Brandon Peters (shoulder) will start vs Maryland.

Kansas St QB Skylar Thompson (knee) is out indefinitely. Liberty is banged up as DB Marcus Haskins, DE Durrell Johnson, WR Javian Lofton, OL Damian Bounds, OL Cooper McCaw are all questionable. All of those players were projected starters in the summer.

LSU RB John Emery (academics) is out for the season. Minnesota WR Chris Autman-Bell (ankle) is questionable vs Colorado.

NC State LB Payton Wilson and S Cyrus Fagan are out for the season. Both were starters and Wilson was one of the best LB's in the country.

New Mexico St's QB Jonah Johnson is doubtful and Weston Eget is out vs SC State. The Aggies will look towards 3rd stringer Dino Maldonado.

Texas QB Casey Thompson has been named the starter vs Rice. Texas A&M QB Haynes King (tibia) is out indefinitely.

Louisiana WR Errol Rogers, OL Carlos Rubio and LB Ferrod Gardner, who are all starters, are questionable vs Ohio on Thursday.

UNLV QB Doug Brumfield (concussion) is questionable vs Iowa St.

USC head coach Clay Helton has been fired. Donte Williams will serve as the interim head coach. Williams joined the USC staff in 2020 as the cornerbacks coach and defensive pass game coordinator and was elevated to associate head coach after last season. A Los Angeles-area native, Williams becomes the first Black head coach in USC football history.

Recapping Week 2 Best Bets

We went a perfect 4-0 on our CFB best bets but it depended on what line you got on the Tulsa/Oklahoma St total. If you bet the game within 18 hours of our release, you got in at UNDER 51.5. Some of you may have pushed but if you bet on gameday, you lost. Some late scoring put the Toledo/Notre Dame game over. South Carolina got a FG on the final play to get a cover and Liberty won by 8. All close wins. What goes around comes around as the NFL went 1-2-1 depending if you got -2 on the Tampa Bay teaser. Most books if you push one leg and win another, you get your refund. We're guessing if you waited until gameday, you lost the tease. New England and Washington were close losses while Houston was an easy winner.

2021 Combined Nationwide Football Newsletter Contest (Regular Season Only)

We are happy to provide you with the records, standings and plays used from the Power Sweep (3★, 4★ & Underdog), Gold Sheet (Key Releases), Power Plays (4.5★), Sports Reporter (Best & Super Bets), Winning Points (Best Bets & Preferred), Playbook (3-5★'s), Pointwise (Ratings 1-4) and Powers' Picks (1-4★'s)

College						NFL						College/NFL Combined					
Newsletter	W	L	T	%	Net	Newsletter	W	L	T	%	Net	Newsletter	W	L	T	%	Net
Playbook	4	1	1	80.00%	3	Gold Sheet	2	0	0	100.00%	2	Playbook	7	1	1	87.50%	6
Winning Points	9	3	0	75.00%	6	Playbook	3	0	0	100.00%	3	Power Plays	3	1	0	75.00%	2
Powers' Picks	7	3	0	70.00%	4	Power Plays	1	0	0	100.00%	1	Winning Points	12	4	0	75.00%	8
Power Plays	2	1	0	66.67%	1	Winning Points	3	1	0	75.00%	2	Powers' Picks	8	5	1	61.54%	3
Pointwise	6	5	1	54.55%	1	Pointwise	1	2	0	33.33%	-1	Pointwise	7	7	1	50.00%	0
Sports Reporter	2	3	1	40.00%	-1	Powers' Picks	1	2	1	33.33%	-1	Gold Sheet	4	7	0	36.36%	-3
Power Sweep	2	5	1	28.57%	-3	Power Sweep	0	2	0	0.00%	-2	Sports Reporter	2	5	1	28.57%	-3
Gold Sheet	2	7	0	22.22%	-5	Sports Reporter	0	2	0	0.00%	-2	Power Sweep	2	7	1	22.22%	-5
Combined	34	28	4	54.84%	6	Combined	11	9	1	55.00%	2	Combined	45	37	5	54.88%	8

CFB and NFL Schedules with Vegas and Brad Powers Lines Week 3 September 16-20

Thursday, Sept 16th		Line	BP	All Times Eastern		Saturday, September 18th		Line	BP	All Times Eastern	
101	N.Y. GIANTS 8:20 p.m. NFL Network	40.5	37			173	FIU 7:00 p.m. ESPN+	54	54		
102	WASHINGTON	-3	-3			174	TEXAS TECH	-20	-20		
103	OHIO 8:00 p.m. ESPN	57	55			175	CHARLOTTE 7:00 p.m. ESPN+	64	64		
104	UL-LAFAYETTE	-20.5	-19			176	GEORGIA ST	-4	-4		
Friday, September 17th		Line	BP	All Times Eastern		177	UTAH 7:00 p.m. CBSSN	-9.5	-11		
105	UCF 7:30 p.m. ESPN	-7	-6			178	SAN DIEGO ST	44	43		
106	LOUISVILLE	67.5	68			179	SOUTH CAROLINA 7:00 p.m. ESPN	48	45		
107	MARYLAND 9:00 p.m. FS1	-7.5	-7			180	GEORGIA	-31.5	-31		
108	ILLINOIS	60.5	61			181	AUBURN 7:30 p.m. ABC	53	54		
Saturday, September 18th		Line	BP	All Times Eastern		182	PENN ST	-6	-8		
109	MICHIGAN ST 12:00 p.m. ABC	56.5	56			183	UTAH ST 7:30 p.m. FS2	53.5	50		
110	MIAMI FL	-6.5	-6			184	AIR FORCE	-8	-8		
111	NORTHERN ILLINOIS 12:00 p.m. Big Ten	54	54			185	VIRGINIA 7:30 p.m. ACC Network	66.5	64		
112	MICHIGAN	-27	-28			186	NORTH CAROLINA	-9	-8		
113	CONNECTICUT 12:00 p.m. CBSSN	48.5	45			187	CENTRAL MICHIGAN 7:30 p.m. SEC Network	61	62		
114	ARMY	-34	-31			188	LSU	-19	-18		
115	EASTERN MICHIGAN 3:30 p.m.	-22	-20			189	UAB 7:30 p.m.	-12	-12		
116	MASSACHUSETTS	56	54			190	NORTH TEXAS	57	56		
117	BOSTON COLLEGE 12:00 p.m. ESPN	-16	-16			191	STANFORD 8:00 p.m. ESPN	-12	-14		
118	TEMPLE	57.5	58			192	VANDERBILT	49	48		
119	VIRGINIA TECH 12:00 p.m. FS1	50.5	-1			193	RICE 8:00 p.m. Longhorn	53	53		
120	WEST VIRGINIA	-3	47			194	TEXAS	-26	-27		
121	COASTAL CAROLINA 12:00 p.m. ESPN2	-14	-11			195	TULANE 8:00 p.m. ESPN2	76	78		
122	BUFFALO	57.5	59			196	OLE MISS	-14	-16		
123	WESTERN MICHIGAN 12:00 p.m. ESPN3	58.5	59			197	OKLAHOMA ST 8:00 p.m. FS1	57.5	-1		
124	PITTSBURGH	-15	-13			198	BOISE ST	-4	55		
125	NEBRASKA 12:00 p.m. FOX	61.5	60			199	ARIZONA ST 10:15 p.m. ESPN	-3.5	-7		
126	OKLAHOMA	-22	-20			200	BYU	51.5	47		
127	CINCINNATI 12:00 p.m. ESPN	-4	-2			201	IOWA ST 10:30 p.m. CBSSN	-31.5	-31		
128	INDIANA	50	52			202	UNLV	52	51		
129	NEW MEXICO 12:00 p.m. SEC Network	50.5	48			203	FRESNO ST 10:45 p.m. Pac-12	63	64		
130	TEXAS A&M	-29.5	-34			204	UCLA	-11.5	-12		
131	MINNESOTA 1:00 p.m. Pac-12	48.5	50			205	SAN JOSE ST 12:30 a.m. FS1	-6.5	-7		
132	COLORADO	-2.5	-2			206	HAWAII	61	61		
133	BALL ST 4:00 p.m.	54	54			Sunday, September 19th		Line	BP	All Times Eastern	
134	WYOMING	-7	-6			269	NEW ORLEANS 1:00 p.m. FOX	-3.5	44		
135	NEVADA 2:00 p.m. ESPN+	-2	-1			270	CAROLINA	44.5	-2		
136	KANSAS ST	50.5	47			271	HOUSTON 1:00 p.m. CBS	48	48		
137	PURDUE 2:30 p.m. NBC	58	63			272	CLEVELAND 1:00 p.m. FOX	-12.5	-12		
138	NOTRE DAME	-8	-3			273	CINCINNATI 1:00 p.m. FOX	45	46		
139	GEORGIA TECH 3:30 p.m. ABC	52	51			274	CHICAGO	-2	-2		
140	CLEMSON	-28.5	-31			275	LAS VEGAS 1:00 p.m. CBS	47	48		
141	USC 3:30 p.m. FOX	-8.5	-8			276	PITTSBURGH	-5.5	-8		
142	WASHINGTON ST	62	60			277	BUFFALO 1:00 p.m. FOX	-3.5	-4		
143	ALABAMA 3:30 p.m. CBS	-14.5	-18			278	MIAMI	47.5	46		
144	FLORIDA	59.5	58			279	L.A. RAMS 1:00 p.m. FOX	-3.5	-2		
145	FLORIDA ST 3:30 p.m. ESPN	61.5	57			280	INDIANAPOLIS	47.5	48		
146	WAKE FOREST	-5	-5			281	SAN FRANCISCO 1:00 p.m. FOX	-3.5	-4		
147	KENT ST 3:30 p.m. Big Ten	56.5	55			282	PHILADELPHIA	50	50		
148	IOWA	-22.5	-19			283	DENVER 1:00 p.m. CBS	-6	-8		
149	SMU 3:30 p.m. CBSSN	-12.5	-12			284	JACKSONVILLE	45.5	44		
150	LOUISIANA TECH	66	68			285	NEW ENGLAND 1:00 p.m. CBS	-6	-7		
151	TULSA 3:30 p.m. FS1	61	61			286	N.Y. JETS	42	41		
152	OHIO ST	-24.5	-27			287	MINNESOTA 4:05 p.m. FOX	51	51		
153	BAYLOR 3:30 p.m. ESPN+	-18	-17			288	ARIZONA	-4	-1		
154	KANSAS	49.5	51			289	ATLANTA 4:05 p.m. FOX	52	49		
155	COLORADO ST 4:00 p.m. ESPN	58.5	56			290	TAMPA BAY	-12.5	-13		
156	TOLEDO	-14.5	-14			291	TENNESSEE 4:25 p.m. CBS	54	52		
157	NORTHWESTERN 4:00 p.m. ACC Network	-3	-6			292	SEATTLE	-5	-4		
158	DUKE	50	48			293	DALLAS 4:25 p.m. CBS	55	59		
159	GEORGIA SOUTHERN 4:00 p.m. SEC Network	52.5	54			294	L.A. CHARGERS	-3	-3		
160	ARKANSAS	-23.5	-20			295	KANSAS CITY 8:20 p.m. NBC	-3.5	-1		
161	MISSISSIPPI ST 4:00 p.m. ESPN2	-3.5	-3			296	BALTIMORE	55	55		
162	MEMPHIS	64	65			Monday, September 20th		Line	BP	All Times Eastern	
163	ARKANSAS ST 4:15 p.m. Pac-12	57.5	54			297	DETROIT 8:15 p.m. ESPN	48	47		
164	WASHINGTON	-16.5	-18			298	GREEN BAY	-11	-13		
165	MIDDLE TENNESSEE 6:00 p.m. ESPN+	59.5	58								
166	UTSA	-12.5	-14								
167	OLD DOMINION 6:00 p.m. ESPN3	53	56								
168	LIBERTY	-27.5	-28								
169	EAST CAROLINA 6:00 p.m.	58	55								
170	MARSHALL	-10	-7								
171	TROY 7:00 p.m. ESPN+	-10	-10								
172	SOUTHERN MISS	50.5	50								

4★ = BEST 3★ = BETTER 2★ = GOOD 1★ = FAIR	THE POWERS' PACK
	3★ Purdue (+8) over NOTRE DAME
	2★ PENN ST (-6) over Auburn
	2★ South Carolina/GEORGIA UNDER 48
	2★ Northwestern (-3) over DUKE
	2★ Arizona St/BYU UNDER 51.5

Games in Rotation Order

Thursday, September 16th

UL-LAFAYETTE 37 Ohio 18. Both teams are banged up and both teams are coming off miserable performances vs FCS teams. First, we gave out 10 CFB plays to VIP's last weekend. We went 9-1. So what was the one loser? How about Ohio -28.5 vs Duquesne as the Bobcats lost outright! Yikes! Meanwhile, ULL was out-played by Nicholls St despite a 27-24 win as the Cajuns were out-gained 511-394. Tough spot for Ohio traveling on a short week and the Bobcats offense stinks this year. However, we bet numbers not teams...we made a pizza bet on Ohio +22. Lean UNDER.

Friday, September 17th

Central Florida 37 LOUISVILLE 31. UCF looks really good under new head coach Gus Malzahn. So far the offense is averaging 50 ppg and 622 ypg while the defense has only given up 281 ypg and 22 rush ypg. This is their first road game. Meanwhile, Louisville hasn't been that impressive at 0-2 ATS and are playing their third game in 12 days. We did bet Louisville at +9 on Sunday but it's just a pizza bet now at +7. We worry that the UCF offense will cut through the Cardinal defense like Ole Miss did in the opener.

Maryland 34 ILLINOIS 27. The Terps look good at 2-0 SU/ATS so far. They're averaging 535 ypg on offense and only allowing 236 ypg on D. Meanwhile, it's been downhill for Illinois after the upset over Nebraska in Week Zero. The Fighting Illini have lost two straight and were hammered by Virginia last week 42-14. Their defense has allowed 497 and 556 yards the last two games. The good news is that starting QB Brandon Peters returns. We think they'll be competitive but we're not involved in this game.

Saturday, September 18th

MIAMI, FL 31 Michigan ST 25. How can you not be impressed with what the Spartans have done so far? Especially on the offensive side of the ball where they are averaging 40 ppg and 553 ypg. They have two legit stars in RB Kenneth Walker (321 rush yards, 10.7 ypc and 5 TD's already) and WR Jayden Reed (245 receiving yards, 27.2 yards per catch!). This will be their biggest test but Miami has disappointed so far at 0-2 ATS. We bet Michigan St +8 on the openers but aren't as wild about taking +6.5 (key numbers do matter!). We still lean MSU.

MICHIGAN 41 Northern Illinois 13. What a wild game Northern Illinois played last week vs Wyoming. Wyoming led 42-16 late 3Q but Northern Illinois rallied and took a 43-42 lead with under 5 minutes left only to lose 50-43. The Huskies are improved this year thanks to RB Harrison Waylee who has 323 rush yards. Speaking of improved, the Wolverines have used a powerful rush attack averaging 339 ypg to get off to a 2-0 SU/ATS start. However, they're going to need to improve the pass game the next few weeks before they travel to Wisconsin. We thought this number was very fair. Pass.

ARMY 38 Connecticut 7. We knew Connecticut was going to be bad entering the season but not this bad. The Huskies are 0-3 ATS failing to cover by 15 ppg. They have an interim coach and if we stacked ranked them in our FCS ratings, they'd be a below average FCS team! That's bad! It doesn't get any easier here vs a powerful Army team. The Black Knights have dominated the line of scrimmage so far with a 299-45 rush ypg edge. They'll dominate here but we're not fond of laying this big of a number with a Service Academy. If you have to get involved, we lean UNDER.

Eastern Michigan 37 MASSACHUSETTS 17. On Tuesday evening, we saw some money show up on Eastern Michigan in the market. It's because the injury report for UMass is really bad and they could be without nearly 10 starters. However, the Minutemen were a little banged up last week and did have a solid performance in an easy cover vs Boston College (lost by only 17 as 38.5-point dogs). Meanwhile, EMU hasn't looked good this season at 0-2 ATS. Last week's game vs Wisconsin was much worse than the 34-7 final as EMU managed only 3 first downs on offense. Their only score was a 98-yard "Pick 6". We lean UNDER here.

Boston College 37 TEMPLE 21. BC got some really bad news this week when it was announced starting QB Phil Jurkovec would be out for a while (if not the whole season) with a hand injury. Backup Dennis Grosel does have experience but the pass game will greatly suffer. Meanwhile, Temple looked better last week in a 45-24 win over Akron. QB Justin Lynch looks like an upgrade over D'Wan Mathis. We didn't see much value here.

Virginia Tech 24 WEST VIRGINIA 23. We like Virginia Tech here as long as you can find a "+3". Our ratings made this line "Pick-Em". The Hokies defense has allowed just 12 ppg and has played a tougher schedule than West Virginia. The Mountaineers are off a 66-0 win but it came against a really bad FCS team in Long Island. Hokies outright and we lean UNDER.

Coastal Carolina 35 BUFFALO 24. Coastal is now 2-0 on the season but we weren't overly impressed with their performance vs Kansas last week. Coastal only had a 460-412 yard edge and in the second half, Kansas was stopped on downs 3 times inside Coastal's 30-yard line. Meanwhile, Buffalo comes in off

a 28-3 loss at Nebraska. We're going to learn a lot about their new coaching staff in this one (whether to find value fading them rest of season). Early week money has come in on Coastal but our ratings were closer to the opener. If it goes to "+14" we will bet the Bulls.

PITTSBURGH 36 Western Michigan 23. We lean Western Michigan in this one. The Broncos were really impressive in a 28-0 win over a solid FCS team in Illinois St. WMU had a 407-57 yard edge. Meanwhile, Pitt is coming off a big win at Tennessee last week. We cashed with Pitt for our VIP's but if you can bank on one thing with Pat Narduzzi's program is that they are consistently inconsistent. One week, they'll look like world-beaters and the next they're getting outright upset as a double-digit favorite. Speaking of that, they are on a 3-9-1 ATS run as a double-digit favorite.

OKLAHOMA 40 Nebraska 20. The 50th Anniversary of the famous 1971 game between these two former historic rivals. Nebraska comes in off back-to-back wins. The 28-3 win over Buffalo was actually one of the better performances they've had under head coach Scott Frost. The Huskers have found a weapon at WR in Samori Tore who has 306 receiving yards while QB Adrian Martinez has thrown for 728 yards (4-0 ratio) and leads the team in rushing with 256. Oklahoma is off a 76-0 beat down of FCS Western Carolina after struggling in the opener vs Tulane. We bet Nebraska +23 and anything north of "+21" has us leaning with the Huskers.

Cincinnati 27 INDIANA 25. Arguably the most important 2-game stretch in Cincinnati football history starts with the Bearcats listed as 4-point favorites at Indiana. The Bearcats have a bye and then play at Notre Dame in two weeks. Win those two, go unbeaten and Cincy might be the first Group of 5 team to make the playoff! Both teams had misleading blowouts over FCS teams last week. We think the Bearcats deserve to be favored here but not by more than a FG. We bet Indiana +4.

TEXAS A&M 41 New Mexico 7. We thought this line was ridiculous on the openers and bet Texas A&M -25 and gave it out to VIP clients at -27.5. Yes, the Aggies almost lost outright last week vs Colorado. Yes, the Aggies will be without starting QB Haynes King. But King wasn't exactly setting the world on fire with a 2-3 ratio. The beauty of the season progressing is you can compare lines. Texas A&M was a 29.5-point favorite at home vs Kent St in Week 1. Kent St is a much better team than New Mexico but yet the Aggies are laying a similar number. The Lobos are 2-0 SU but 0-2 ATS against a very weak slate. Last we checked, that A&M defense is healthy and one of the best in the country. Gig-Em!

COLORADO 26 Minnesota 24. What Karl Dorrell is doing at Colorado is one of the biggest surprises to us in following CFB for the last 30 years. We thought it was a really bad hire at the time but the Buffs have been greatly improved under his watch. They nearly pulled off a landmark win last week vs Texas A&M. Meanwhile, we weren't impressed with the Gophers last week as Miami, Oh out-played them greatly in the second half. Wrong team was favored in the openers as we took Colorado +3. The current line is where we thought the line should be. Pass.

WYOMING 30 Ball St 24. A lot of professional money likes Wyoming here. We thought we would like them too but the line came higher than we expected. It is a unique travel spot for Ball St and they're playing in elevation. However, the Pokes haven't been overly impressive this year with close wins over Montana St and Northern Illinois. On the other side, the Cardinals are 0-2 ATS this season after Penn St ended their 8-game winning streak. We're passing and would actually take Ball St if the line went to "+7.5".

Nevada 24 KANSAS ST 23. If you're wondering why Nevada is favored on the road here, Kansas St QB Skyler Thompson (knee) is out indefinitely. Will Howard does have plenty of experience from last year replacing an injured Thompson but he's certainly a downgrade. The Wildcats will have to rely on RB Deuce Vaughn who has 244 yards and 4 TD's already. Kansas St is out-rushing its opponents by a 204-70 margin. They'll have their hands full with a very tough Nevada team led by QB Carson Strong who we think will be a 1st-Round Draft pick. Nevada gets the win and we lean UNDER.

3★ Purdue (plus the points) NOTRE DAME 33 Purdue 30. Notre Dame has not looked good in their 0-2 ATS start nearly losing to both Florida St and Toledo. They've been out-rushed by an average of 198-99 which just isn't the ND team we've been used to the last 3-4 years. Their defense has allowed 4 plays of 60 yards or more already. Believe it or not, that is more than what ND allowed in 3 seasons under their former DC Clark Lea. New DC Marcus Freeman has implemented a questionable 3-man front on defense that has never worked in modern ND history. Meanwhile, the once-proud Irish offensive line has allowed 10 sacks already! On the other side, Purdue is far better than both ND's first two opponents. The Boilers are 2-0 ATS outscoring their opponents by 29 ppg and outgaining them by 189 ypg. If ND plays the way they did vs FSU and Toledo, they will get beat outright here. We bet Purdue +8. Purdue is 18-4 ATS as a road underdog since 2014!

CLEMSON 41 Georgia Tech 10. Clemson is 0-2 ATS this season but their defense remains one of the best in the country. The Tigers' D still hasn't allowed a TD yet this season. Meanwhile, GT rebounded from a shocking loss to Northern Illinois by picking up a win and cover over FCS Kennesaw St. QB Jordan Yates is a better passer than Jeff Sims as he is completing 71% with a 5-0 ratio. Our numbers say Clemson is the play here but we won't make a bet here unless we see a "-27.5" show up. Also note the Tigers are banged up.

Use 34 WASHINGTON ST 26. Obviously, the dynamics of this one changed with USC firing head coach Clay Helton on Monday. Donte Williams will serve as the interim becoming the first African-American head coach in USC history. When we made a bet on Washington St +10 on the Sunday openers, it certainly wasn't a "play on" a Washington St team that is 0-2 ATS this season. It was a "play against" USC. We didn't like the travel spot here and the body language of USC in the Stanford game. Now we actually think USC might played fast and free. Pass.

Alabama 38 FLORIDA 20. Thank you, thank you, thank you to the betting group that took Florida "+15" on the Sunday openers. We are so happy to get Alabama at -13 and now we're seeing some "-14's" show up again in the market. Remember the Tide are a respectable 19-12 ATS laying 21 or less the last 5 years. We expect the Crimson Tide to be plenty motivated after their last six quarters of uninspired play. The story of the game will be the Alabama defense allowing just 68 rush ypg vs a Florida rush offense averaging 382 ypg. We think both Florida QB's are too one-dimensional and the Gators certainly don't have the pass attack like last season that gave Bama fits. Roll Tide.

WAKE FOREST 31 Florida St 26. FSU is 0-2 to start the season suffering two painful last-second losses. First to Notre Dame in OT and then in a ridiculous defensive set, they allowed Jacksonville St to hit a 59-yard "Hail Mary" pass last week. FSU was a 27.5-point favorite and you can make a case it was their worst loss in school history. We expect the Noles to play better here but we don't think it will be good enough. This is a FSU program that is just 21-28 straight up since 2017. In that same time frame Wake is 29-21 straight up. They are the better program right now. We lean UNDER.

IOWA 37 Kent St 18. We talk about all the good bets we make. Well, we made a bad one in this game taking Kent St +21 on the Sunday openers. Now the line is 22.5. However, we do love the spot here for the Golden Flashes who catch Iowa coming off big performances vs Indiana and Iowa St. However, a closer look will show that Iowa has scored 3 defensive TD's in those two games and their offense only managed 173 yards last week (were +4 in TO's). Can you trust them laying this kind of number especially against a high-powered Kent St offense? The only thing keeping this from a 2★ selection is our power ratings on Page 6.

Smu 40 LOUISIANA TECH 28. Neither team was overly impressive last week. SMU only had a 537-506 yard edge in a 35-12 win over North Texas. Meanwhile, LT was outgained 598-448 but was +2 in TO's (including a "Pick 6") in a wild 45-42 win over SE Louisiana. We need a "+14" in the market to show here for us to get involved here on LT as they are in their preferred dog role under Holtz.

OHIO ST 44 Tulsa 17. We're simply stunned the Buckeyes lost at home last week to Oregon as 14.5-point favorites. OSU had a 612-505 yard edge but Oregon controlled the line of scrimmage with a 269-128 yard edge. It was the Buckeyes' first regular-season loss in nearly three years and the first of third-year coach Ryan Day's tenure. The OSU defense needs improvement, especially linebackers. "You ask yourself, is it personnel, is it scheme or is it coaching?" Day wondered. They take on a dangerous Tulsa team that nearly upset Oklahoma St last week. We thought the line was fair here but there has been Tulsa money in the market the last 24 hours. If the line drops to less than 24, we will take OSU.

Baylor 34 KANSAS 17. We lost with Baylor on these pages two weeks ago vs Texas St as they got back-doored but this remains a dangerous team. The Bears are +34 ppg and +292 ypg on the season and are much improved in year two under Dave Aranda. They're taking on a Kansas team that gave a solid effort last week at Coastal Carolina but will be out-classed here. We laid 14 with Baylor on the openers and now the current line of 17.5 is where we expected it to be.

TOLEDO 35 Colorado St 21. Toledo is a legit team folks. The Rockets were our No. 1 season win total best bet. They're super experienced and are by far the most talented team in the MAC. That near upset of Notre Dame wasn't a fluke. The question is can they handle business here against a desperate Colorado St team that is 0-2 SU and 0-2 ATS off back-to-back upset losses. Asked if he's concerned about the locker room, Rams coach Steve Addazio responded: "It's two games into a season. This is the problem in our world today. This is exactly what the problem is. People want to say, 'Hey, do you feel sorry for yourself?'" I don't feel sorry for myself. I'm not going to drop my head! There's not a coach in this program that's going to drop his head! It's my job to make sure we just keep swinging away! Cause that's all loser stuff and it'll be my job to stay on top of that. Want to play big-time college football and you lose two games, and you want to talk about, you afraid you're going to lose the locker room? No, I'm not afraid of losing the locker room." Here's what we think...if the Rams get blown out here, Addazio has officially lost the locker-room.

2★ Northwestern 27 DUKE 21. Our ratings like Northwestern here. The Wildcats lost week 1 to Michigan St but we feel the Spartans are better than what people think this year and we didn't downgrade Northwestern as much as the rest of the market. The Wildcats were one of the least experienced teams in the country heading into 2021 and will get better as the year progresses. Yes, Duke got a bounce-back win vs NC A&T last week but we think the Cats are far superior team and program.

ARKANSAS 37 Georgia Southern 17. This is a sneaky spot to "play-on" Georgia Southern for multiple reasons. Yes, they've struggled this year at 0-2 ATS but now they get starting QB Justin Tomlin back from a 2-game suspen-

sion. On top of it, you're catching Arkansas off one of their biggest wins in recent memory as they destroyed Texas and their fans stormed the field. "Buy Low, Sell High". We're hoping to see a "+24".

Mississippi St 34 MEMPHIS 31. Should be a fun game here. Mississippi St has had an uneven 2-0 SU start. They barely survived vs Louisiana Tech as a 3-TD favorite and then upset NC State as a short home dog last week. Such is the life with Mike Leach as your head coach. The good news is that QB Will Rogers is completing 75% of his passes. Now they're on a high-powered Memphis offense averaging 49 ppg and 634 ypg. The bad news is the Memphis defense allowing 680 yards to Arkansas St last week. We bet OVER 58.5 and it was one of our favorite bets we made on the openers. However, the current lines are close to our numbers.

WASHINGTON 36 Arkansas St 18. Raise your hand if you want to bet on the 0-2 SU and 0-2 ATS Washington Huskies right now? Believe it or not, our hand is raised and we took Washington -14.5 on the openers. Yes, it's tough laying points with an offense averaging just 9 ppg and 58 rush ypg. However, this can be a get right game as they're taking on a Arkansas St defense that gave up 680 yards and 55 points last week. We think the side is cheap and we do lean UNDER.

UTSA 36 Middle Tennessee 22. Jeff Traylor! Keep that name in your mind. He's the head coach at UTSA and will be at a bigger job soon. Traylor has done an amazing job already in less than two years in San Antonio. UTSA is 2-0 SU and ATS and are a legit threat to win CUSA this year. They are +31 ppg and +195 ypg on the season and were legitimately better than Illinois in their upset a couple weeks. We were stunned when this line opened UTSA -9. Yes, Middle has looked improved but their run game has averaged just 78 ypg. Lean UTSA even after the line move.

LIBERTY 42 Old Dominion 14. Liberty has now covered 10 straight games dating back to last year by an average of 9.5 ppg. Liberty head coach Hugh Freeze is 66-35-1 ATS all-time in his career! Best in the country ATS wise. We won with Liberty last week even though the line went against us. The Flames were the right side as they had a 339-232 yard edge including 185-21 on the ground. Liberty could have won by more but missed a FG and got stopped on downs at the Troy 2-yard line. They're taking on an improved ODU team off their first win in nearly two years. We lean with Liberty (bet them -23 on the openers).

MARSHALL 31 East Carolina 24. We won fading East Carolina on these pages last week but it wasn't easy as they covered the entire game except when South Carolina hit the game-winning FG in the final seconds. The Pirates have certainly played the much tougher schedule so far as Marshall has played a bad Navy team and FCS NC Central. The Herd's stats last week saw them with a 703-164 yard edge. Still, they're taking a step up in class here and we like ECU "+10". That's what we bet on the openers.

Troy 30 SOUTHERN MISS 20. Troy got some early week money and we're a part of it. That's saying something considering we were against the Trojans last week and won on these pages. They were fortunate to only lose by 8 to Liberty as they were out-gained by more than 100 yards. However, it was very notable that the market was betting on Troy last week as they went from +6 to +3 vs a very good Liberty team. Meanwhile Southern Miss got a nice win and cover over Grambling last week. Their defense has allowed just 41 rush ypg so far. After the line move, we're passing.

TEXAS TECH 37 Fiu 17. Last week Texas Tech nearly lost outright as a 31.5-point favorite to Stephen F. Austin. SFA had 22-11 first down and 375-364 yard edges but benefited from +4 TO's. TT did have a 7.3-4.3 yards per play advantage! Meanwhile, FIU had a 400-336 yard edge but were -3 in TO's in a OT loss to Texas St. One of their 3 fumbles came at the Texas St 2-yard line. Obviously, we're not afraid to make a lot of bets but this game isn't even on our radar. Pass.

GEORGIA ST 34 Charlotte 30. We circled this game as a "Buy Low, Sell High" spot but the market is all over it with Georgia St more than a FG favorite. There is really nothing redeemable about what we've seen from Georgia St so far. They have failed to cover the spread in their two games so far this season by 26 ppg. The Panthers are -258 ypg. Their offense that returned all 11 starters is averaging just 224 ypg and 14 ppg. Now they're taking on a 2-0 SU/ATS Charlotte team feeling good about themselves. Early money is on Georgia St after the line opened -2. We're passing at the current number.

Utah 27 SAN DIEGO ST 16. We like Utah here to get a bounce back win. Last week they saw their 9-game winning streak vs BYU snapped in an upset loss. "I would have bet my house going in that we would not lose the line of scrimmage." Utes coach Kyle Whittingham said "I never have seen that coming where we didn't control the line of scrimmage. That's our M.O., that's what we do best. But we surrendered nearly 250 yards rushing, couldn't get a sack." We expect a fully focused effort here vs a San Diego St team that dominated Arizona last week but could be playing without starting QB Jordon Brookshire.

2★ UNDER 48 GEORGIA 38 South Carolina 7. Last week Georgia had a 539-174 yard edge in a 56-7 destruction of UAB. Backup QB Stetson Bennett (filling in for JT Daniels) hit 10 of 12 passes for 288 yards and 5 TD's. However, Bennett is now also banged up and both guys are questionable as of press-time. Meanwhile, we cashed on these pages with South Carolina last week as they got a FG on the final play of the game to win and cover vs East Carolina. The Gamecocks' defense is allowing just 186 ypg. It looks like starting QB Luke Doty could return for them after missing the first two games of the season. We lean with SC but prefer the UNDER here.

2★ PENN ST 31 Auburn 23. Auburn has awesome stats so far as they have outscored their opponents 122-10 and are +394 ypg! The problem is they played a couple of tomato cans and are taking a big step up in class here. The other problem is Auburn QB Bo Nix's home/away splits in his career. At home, he has an outstanding 22-to-3 TD-to-INT ratio. On the road, just 10-to-10! Meanwhile, Penn St is also 2-0 SU/ATS but has played a much tougher schedule. In fact, Penn St has won and covered 6 straight games dating back to last year (after an 0-5 start in 2020). This is a "White Out" game and while Auburn is used to playing in front of rabid SEC fans, remember there were limited crowds last season. This could be a culture shock for them.

AIR FORCE 29 Utah St 21. Utah St has been one of the bigger surprises so far this season at 2-0 SU/ATS with an average cover of 19 ppg. Last week they fell behind 21-7 to a good North Dakota team (Top 10 FCS) and proceeded to outscore them 41-3 the rest of the game. They will get a stern test here from an Air Force defense allowing just 9 ppg and 40 rush ypg so far this season. Last week the Falcons limited Navy to just 68 total yards in a 23-3 win! We did bet Utah St on the openers at +11 but would prefer the UNDER now.

NORTH CAROLINA 36 Virginia 28. Virginia is a team to keep an eye on. This could be Mendenhall's best team yet. They've outscored their first two opponents by an average of 43-7 and are +291 ypg. The Cavaliers have covered those two games by 15 ppg. Meanwhile, NC got back on track with a 59-17 win over Georgia St last week. NC QB Sam Howell rebounded from the VT game to throw for 352 yards and 3 TD's while also running for 104 yards and 2 TD's. This is one where we are just going to sit back and learn a lot from both teams moving forward.

LSU 40 Central Michigan 22. We have not been impressed with LSU so far this season at 0-2 ATS. We could be dealing with another Gene Chizik (former Auburn head coach) with regards to LSU coach Ed Orgeron. Win a national championship and then fired only a few years later. There are both on and off-field issues for this Tiger program currently. On the field, they are banged up already and the offensive line hasn't looked good. On the other side, this is a dangerous Central Michigan team that is 2-0 ATS and out-yarded Missouri in the opener. Last week they destroyed Robert Morris. We lean Chips and also bet the OVER on the openers (58.5).

Uab 34 NORTH TEXAS 22. North Texas did have a misleading 35-12 loss to SMU last week. SMU only had a 537-506 yard edge as both teams missed several scoring opportunities. UAB should get the ground game going vs a NT team allowing 243 rush ypg. We like UAB to get the bounce back win after Georgia destroyed them last week. The problem is we expected the number to come in the 10 range and it opened 14. We do lean UNDER.

STANFORD 31 Vanderbilt 17. Both teams were miserable in Week 1 and both looked much improved last week in road upset wins. First, Vanderbilt after losing to FCS East Tennessee St beat Colorado St. However, Colorado St had a 445-342 yard edge including 207-104 on the ground. Colorado St missed 2 FG's and were stopped on downs at the Vandy 3-yard line. Meanwhile, Stanford basically fired USC head coach Clay Helton as they led USC 42-13 in the 4Q. The Cardinal have found their QB in Tanner McKeen who was 16 of 23 for 234 yards and 2 TD's. We like them by 2 TD's here and love our "-9" opener bet.

TEXAS 40 Rice 13. The Longhorns were exposed last week in a 40-21 blowout loss to Arkansas as 6-point favorites. Arkansas had a 471-256 yard edge including 333-138 on the ground. "This was not a performance I was anticipating," first-year coach Steve Sarkisian said. "But we'll find out about ourselves and what we're made of, because I really believe this one games not going to define us. But we've got work to do, that's for sure." QB Hudson Card was pulled on the final drive of the third quarter with Texas trailing 33-7. Casey Thompson led two Longhorns scoring drives in the fourth quarter, both capped by his rushing TD's and he will get the start here. The Longhorns' 256 yards of total offense are their lowest since 2015. Meanwhile, Rice got routed by Houston 27-7. We didn't bet anything here.

OLE MISS 47 Tulane 31. Tulane looks pretty good so far especially on the offensive side. After putting up 35 points vs Oklahoma in the opener they 69 vs FCS Morgan St last week. Speaking of offense, Ole Miss knows a thing or two as they are averaging 49 ppg and 600 ypg. However, the defense has been the story allowing just 380 ypg and 21 ppg, a far cry from last year's unit that allowed 519 ypg and 38 ppg. We were surprised a betting group hammered the UNDER on Sunday (opener was 77.5). We gladly took OVER 71.5 and still lean that way.

Oklahoma St 28 BOISE ST 27. We like Oklahoma St in this game. However, it's not because we like this Cowboys team who is 0-2 ATS and struggled to beat Missouri St and Tulsa at home. Oklahoma St is also a little banged up on offense but did get back QB Spencer Sanders last week. It's strictly a play against a Boise St team that has already had two phony finals this year. First, in the opener they were out-gained by 290 yards in a 5-point loss. The Broncos got a 100-yard "Pick 6" in that one (14-point swing). Last week they were +5 in TO's vs UTEP and at one point had scored 31 points on just 3 minutes of time of possession.

2★ UNDER 51.5 Arizona St 27 BYU 20. We like Arizona St and the UNDER here. First, we have an ASU team that has slept-walked through their first two opponents. The Sun Devils have owned the line of scrimmage with a 255-83 rushing ypg edge. ASU was probably game-planning for this one in the summer. On the other side, they're taking on a BYU team off back-to-back wins over Pac-12 teams to start the season. However, this is where they could wear down a bit and that's been the case in their Independent schedules over the years (last year an exception because they played Group of 5 teams). Ending a 9-game losing streak to your arch rival was very emotional for the Cougars and it showed on the sidelines at the end of the game. It will be tough for them to bring their "A" game here. Also both teams are a combined 4-0 to the UNDER this year.

IOWA ST 41 Unlv 10. Obviously, Iowa St has been a big disappointment so far this season. We figured that could be the case with their highest preseason ranking in school history. So far the Cyclones are 0-2 ATS (-18.5 ppg) and last week suffered a devastating loss again to arch rival Iowa 27-17. It was misleading as Iowa St had 21-11 first down and 339-173 yard edges but were -4 in TO's. Iowa St QB Brock Purdy was 13 of 27 for 138 yards and 3 INT's and was benched. "Somewhere along the line I have failed this team to be prepared for this moment," said Campbell, who fell to 0-5 against Iowa. "I think the lack of execution really falls on my shoulders." They'll get a bounce-back win here vs a UNLV team that hasn't won a game since 2019. Last week the Rebels only trailed Arizona St 14-10 late 3Q but eventually lost 37-10. Do you really want to lay 30 with Iowa St?

UCLA 38 Fresno St 26. UCLA comes in off the bye after a 2-0 SU/ATS start. The big story has been their physicality at the line of scrimmage as they've out-rushed their opponents by a combined 454-75 so far. How will the Bruins handle being pat on the back for two weeks? On the other side, this Fresno St is among the most improved in the entire country. The Bulldogs are 3-0 ATS with an average cover of 16.5 ppg. They are +30 ppg and +281 ypg on the season and nearly outright upset a really good Oregon team. They won't have any fear here. With all that being said, we bet numbers not teams and took advantage of an early UCLA -9 number. The current number seems fair.

San Jose St 34 HAWAII 27. San Jose St comes in off a bye. That had a misleading 23-point loss to USC as they only trailed by 6 early in the 4Q. Meanwhile, Hawaii is 0-3 ATS failing to cover the spread by 11.7 ppg. Their defense that returned 11 starters is getting worse as they've allowed 392 yards to UCLA, 477 to Portland St and then 558 to Oregon St last week. Remember, Hawaii is playing in front of no fans this year so some of their HFA has been reduced. We missed the early number of San Jose -3. We're passing at the current numbers.

Brad Powers' Personal Bets

41 pending, total cost \$37,025.00			
Sports Bet	\$550.00	Sports Bet	\$550.00
Placed Sep 12, 11:08 AM		Placed Sep 12, 11:08 AM	
Sep-18 NCAA FOOTBALL		Sep-18 NCAA FOOTBALL	
(146) WAKE FOREST UN 62-110		(146) WAKE FOREST UN 62-110	
Sports Bet	\$1,100.00	Sports Bet	\$550.00
Placed Sep 12, 11:07 AM		Placed Sep 12, 11:07 AM	
Sep-18 NCAA FOOTBALL		Sep-18 NCAA FOOTBALL	
(130) TEXAS A&M -25-110		(128) NEBRASKA +23-110	
Sports Bet	\$550.00	Sports Bet	\$220.00
Placed Sep 12, 11:27 AM		Placed Sep 12, 11:06 AM	
Sep-18 NCAA FOOTBALL		Sep-16 NCAA FOOTBALL	
(190) N TEXAS 69-59-110		(103) OHIO +22-110	
Sports Bet	\$550.00	Sports Bet	\$1,100.00
Placed Sep 12, 11:18 AM		Placed Sep 12, 11:05 AM	
Sep-18 NCAA FOOTBALL		Sep-18 NCAA FOOTBALL	
(197) OKLAHOMA ST +6-110		(199) ARIZONA ST -2-110	
Sports Bet	\$550.00	Sports Bet	\$1,100.00
Placed Sep 12, 11:18 AM		Placed Sep 12, 11:05 AM	
Sep-18 NCAA FOOTBALL		Sep-18 NCAA FOOTBALL	
(204) UCLA -9-110		(191) STANFORD -9-110	
Sports Bet	\$1,100.00	Sports Bet	\$1,100.00
Placed Sep 12, 11:17 AM		Placed Sep 12, 11:05 AM	
Sep-18 NCAA FOOTBALL		Sep-18 NCAA FOOTBALL	
(192) PENN ST +6-110		(197) OKLAHOMA ST +4-110	
Sports Bet	\$1,100.00	Sports Bet	\$1,100.00
Placed Sep 12, 11:15 AM		Placed Sep 12, 11:05 AM	
Sep-18 NCAA FOOTBALL		Sep-18 NCAA FOOTBALL	
(143) ALABAMA -15-110		(191) STANFORD -9-110	
Sports Bet	\$1,100.00	Sports Bet	\$1,100.00
Placed Sep 12, 11:15 AM		Placed Sep 12, 11:05 AM	
Sep-18 NCAA FOOTBALL		Sep-18 NCAA FOOTBALL	
(123) W MICHIGAN +16-110		(187) C MICHIGAN OV 585-110	
Sports Bet	\$1,100.00	Sports Bet	\$1,100.00
Placed Sep 12, 11:14 AM		Placed Sep 12, 11:04 AM	
Sep-18 NCAA FOOTBALL		Sep-18 NCAA FOOTBALL	
(123) W MICHIGAN OV 575-110		(183) UTAH ST +11-110	
Sports Bet	\$1,100.00	Sports Bet	\$1,100.00
Placed Sep 12, 11:04 AM		Placed Sep 12, 11:02 AM	
Sep-18 NCAA FOOTBALL		Sep-18 NCAA FOOTBALL	
(177) UTAH -7-110		(149) SMU OV 645-110	
Sports Bet	\$1,100.00	Sports Bet	\$1,100.00
Placed Sep 12, 11:04 AM		Placed Sep 12, 11:02 AM	
Sep-18 NCAA FOOTBALL		Sep-18 NCAA FOOTBALL	
(171) TROY -8-110		(147) KENT ST +21-110	
Sports Bet	\$1,100.00	Sports Bet	\$1,100.00
Placed Sep 12, 11:04 AM		Placed Sep 12, 11:02 AM	
Sep-18 NCAA FOOTBALL		Sep-18 NCAA FOOTBALL	
(169) E CAROLINA +10-110		(142) WASH ST +10-110	
Sports Bet	\$1,100.00	Sports Bet	\$1,100.00
Placed Sep 12, 11:03 AM		Placed Sep 12, 11:01 AM	
Sep-18 NCAA FOOTBALL		Sep-18 NCAA FOOTBALL	
(168) LIBERTY -23-110		(132) COLORADO +3-110	
Sports Bet	\$1,100.00	Sports Bet	\$1,100.00
Placed Sep 12, 11:03 AM		Placed Sep 12, 11:01 AM	
Sep-18 NCAA FOOTBALL		Sep-18 NCAA FOOTBALL	
(166) UTAH -9-110		(123) W MICHIGAN +16-110	
Sports Bet	\$1,100.00	Sports Bet	\$1,100.00
Placed Sep 12, 11:03 AM		Placed Sep 12, 11:01 AM	
Sep-18 NCAA FOOTBALL		Sep-18 NCAA FOOTBALL	
(164) WASHINGTON -145-110		(119) VA TECH +3-110	
Sports Bet	\$1,100.00	Sports Bet	\$1,100.00
Placed Sep 12, 11:03 AM		Placed Sep 12, 11:00 AM	
Sep-18 NCAA FOOTBALL		Sep-18 NCAA FOOTBALL	
(161) MISS ST OV 585-110		(137) PURDUE OV 575-110	
Sports Bet	\$1,100.00	Sports Bet	\$1,100.00
Placed Sep 12, 11:03 AM		Placed Sep 12, 11:00 AM	
Sep-18 NCAA FOOTBALL		Sep-18 NCAA FOOTBALL	
(157) N WESTERN -2-110		(137) PURDUE +8-110	
Sports Bet	\$1,100.00	Sports Bet	\$1,100.00
Placed Sep 12, 11:02 AM		Placed Sep 12, 11:00 AM	
Sep-18 NCAA FOOTBALL		Sep-18 NCAA FOOTBALL	
(153) BAYLOR -14-110		(109) MICHIGAN ST +8-110	

Week 3 College Football Power Ratings (Vegas Ratings Not AP Poll Style)

Rk	Team	8/25	9/15	Diff	Rk	Team	8/25	9/15	Diff	Rk	Team	8/25	9/15	Diff
1.	Alabama	99.62	101.12	+1.5	50.	Wake Forest	73.47	72.47	-1.0	99.	Miami (OH)	58.86	58.86	0.0
2.	Georgia	91.40	94.40	+3.0	51.	Colorado	69.91	72.41	+2.5	100.	Hawaii	61.75	58.75	-3.0
3.	Clemson	96.40	93.90	-2.5	52.	Stanford	73.09	72.09	-1.0	101.	Eastern Mich	60.12	58.62	-1.5
4.	Oklahoma	95.15	93.65	-1.5	53.	Maryland	69.85	71.85	+2.0	102.	Colorado State	61.44	57.94	-3.5
5.	Ohio State	93.21	90.71	-2.5	54.	SMU	70.30	71.80	+1.5	103.	Middle Tenn	55.67	57.67	+2.0
6.	Wisconsin	86.80	86.80	0.0	55.	UL-Lafayette	74.10	71.60	-2.5	104.	Georgia State	62.64	57.64	-5.0
7.	Penn State	85.04	86.04	+1.0	56.	California	72.21	71.21	-1.0	105.	USF	58.86	57.36	-1.5
8.	Oregon	84.70	85.20	+0.5	57.	Boston College	73.69	71.19	-2.5	106.	Northern Illinois	55.04	57.04	+2.0
9.	Iowa	81.95	84.95	+3.0	58.	Missouri	72.65	71.15	-1.5	107.	Louisiana Tech	55.49	56.99	+1.5
10.	Texas A&M	88.41	84.41	-4.0	59.	Fresno State	64.03	71.03	+7.0	108.	Georgia Southern	59.64	56.64	-3.0
11.	Iowa State	88.83	83.83	-5.0	60.	Texas Tech	71.35	70.85	-0.5	109.	Vanderbilt	58.93	56.43	-2.5
12.	Florida	84.70	83.70	-1.0	61.	Toledo	68.94	70.44	+1.5	110.	Texas State	54.08	55.58	+1.5
13.	Ole Miss	82.15	83.65	+1.5	62.	Florida State	72.34	70.34	-2.0	111.	Rice	55.82	55.32	-0.5
14.	North Carolina	83.90	82.90	-1.0	63.	Tulane	68.33	70.33	+2.0	112.	Ohio	61.04	55.04	-6.0
15.	Cincinnati	82.09	82.59	+0.5	64.	Louisville	71.68	70.18	-1.5	113.	Charlotte	52.35	54.35	+2.0
16.	Auburn	80.99	82.49	+1.5	65.	Rutgers	67.58	69.58	+2.0	114.	North Texas	53.16	54.16	+1.0
17.	Michigan	79.43	82.43	+3.0	66.	Kansas State	69.99	69.49	-0.5	115.	Southern Miss	56.05	54.05	-2.0
18.	LSU	84.80	81.80	-3.0	67.	Northwestern	72.47	69.47	-3.0	116.	New Mexico	54.91	53.91	-1.0
19.	UCLA	77.59	81.59	+4.0	68.	Houston	69.29	69.29	0.0	117.	Temple	54.73	53.73	-1.0
20.	Miami (FL)	83.80	80.30	-3.5	69.	Memphis	69.35	68.85	-0.5	118.	Navy	59.01	53.51	-5.5
21.	Utah	82.78	80.28	-2.5	70.	Tennessee	69.40	68.40	-1.0	119.	South Alabama	51.53	53.03	+1.5
22.	TCU	81.22	80.22	-1.0	71.	Tulsa	70.31	68.31	-2.0	120.	Kansas	52.71	52.71	0.0
23.	Arizona State	81.58	80.08	-1.5	72.	San Jose State	66.25	68.25	+2.0	121.	FIU	51.63	52.13	+0.5
23.	Texas	82.08	80.08	-2.0	73.	Washington State	71.68	68.18	-3.5	122.	UNLV	49.33	49.83	+0.5
25.	Notre Dame	84.02	80.02	-4.0	74.	Oregon State	67.81	67.81	0.0	123.	UTEP	46.52	47.52	+1.0
26.	USC	82.70	79.70	-3.0	75.	San Diego State	67.02	67.52	+0.5	124.	Old Dominion	43.81	45.81	+2.0
27.	Indiana	80.84	78.84	-2.0	76.	UAB	67.08	67.08	0.0	125.	UL-Monroe	44.22	43.22	-1.0
28.	UCF	76.90	78.40	+1.5	77.	Marshall	62.75	66.75	+4.0	126.	Akron	44.10	42.10	-2.0
29.	Virginia Tech	75.60	77.60	+2.0	78.	UTSA	62.46	66.46	+4.0	127.	Bowling Green	38.08	39.58	+1.5
30.	Arkansas	74.89	76.39	+1.5	79.	Georgia Tech	68.15	66.15	-2.0	128.	Massachusetts	38.23	38.73	+0.5
31.	NC State	75.63	76.13	+0.5	80.	Army	63.17	65.67	+2.5	129.	Connecticut	44.21	37.21	-7.0
32.	Oklahoma State	80.48	75.98	-4.5	81.	South Carolina	64.04	65.54	+1.5	130.	New Mexico St	37.13	37.13	0.0
33.	Washington	81.53	75.53	-6.0	82.	Wyoming	65.78	65.28	-0.5	Biggest Gains From Start of Season		Biggest Losses From Start of Season		
34.	Virginia	71.83	75.33	+3.5	83.	Troy	63.20	65.20	+2.0	Fresno State	+7.0	Connecticut	-7.0	
35.	Pittsburgh	74.23	75.23	+1.0	84.	Central Mich	62.61	65.11	+2.5	Utah State	+5.5	Washington	-6.0	
36.	Mississippi State	76.14	75.14	-1.0	85.	Florida Atlantic	63.03	65.03	+2.0	W. Kentucky	+4.5	Ohio	-6.0	
37.	BYU	74.04	75.04	+1.0	86.	Air Force	62.79	64.29	+1.5	UCLA	+4.0	Navy	-5.5	
38.	Michigan State	71.46	74.96	+3.5	87.	Western Mich	63.28	63.28	0.0	Marshall	+4.0	Iowa State	-5.0	
39.	Appalachian St	72.79	74.79	+2.0	88.	Ball State	65.72	63.22	-2.5	UTSA	+4.0	Georgia State	-5.0	
40.	West Virginia	74.76	74.76	0.0	89.	Illinois	66.38	62.88	-3.5	Virginia	+3.5	Oklahoma State	-4.5	
41.	Coastal Carolina	74.13	74.63	+0.5	90.	Syracuse	61.21	62.71	+1.5	Michigan State	+3.5	Texas A&M	-4.0	
42.	Nebraska	75.58	74.58	-1.0	91.	Kent State	60.18	62.68	+2.5	Nevada	+3.5	Notre Dame	-4.0	
43.	Minnesota	77.48	74.48	-3.0	92.	Buffalo	60.13	61.13	+1.0	Georgia	+3.0	Miami (FL)	-3.5	
44.	Purdue	71.92	73.92	+2.0	93.	East Carolina	62.07	61.07	-1.0	Iowa	+3.0	Washington St	-3.5	
45.	Boise State	73.42	73.42	0.0	94.	Duke	60.61	60.61	0.0	Michigan	+3.0	Illinois	-3.5	
46.	Nevada	69.62	73.12	+3.5	95.	W. Kentucky	56.02	60.52	+4.5			Colorado State	-3.5	
47.	Kentucky	71.44	72.94	+1.5	96.	Arizona	60.89	59.89	-1.0					
48.	Liberty	72.93	72.93	0.0	97.	Utah State	53.48	58.98	+5.5					
49.	Baylor	73.15	72.65	-0.5	98.	Arkansas State	56.88	58.88	+2.0					

Week 3 College Football Power Ratings by Conference

SEC		Big 12		Pac-12		Mountain West		CUSA						
Rk	Team	Rating	Rk	Team	Rating	Rk	Team	Rating	Rk	Team	Rating			
1.	Alabama	101.12	4.	Oklahoma	93.65	8.	Oregon	85.20	45.	Boise State	73.42	76.	UAB	67.08
2.	Georgia	94.40	11.	Iowa State	83.83	19.	UCLA	81.59	46.	Nevada	73.12	77.	Marshall	66.75
10.	Texas A&M	84.41	22.	TCU	80.22	21.	Utah	80.28	59.	Fresno State	71.03	78.	UTSA	66.46
12.	Florida	83.70	23.	Texas	80.08	23.	Arizona State	80.08	72.	San Jose State	68.25	85.	Florida Atlantic	65.03
13.	Ole Miss	83.65	32.	Oklahoma State	75.98	26.	USC	79.70	75.	San Diego State	67.52	95.	W. Kentucky	60.52
16.	Auburn	82.49	40.	West Virginia	74.76	33.	Washington	75.53	82.	Wyoming	65.28	103.	Middle Tenn	57.67
18.	LSU	81.80	49.	Baylor	72.65	51.	Colorado	72.41	86.	Air Force	64.29	107.	Louisiana Tech	56.99
30.	Arkansas	76.39	60.	Texas Tech	70.85	52.	Stanford	72.09	97.	Utah State	58.98	111.	Rice	55.32
36.	Mississippi State	75.14	66.	Kansas State	69.49	56.	California	71.21	100.	Hawaii	58.75	113.	Charlotte	54.35
47.	Kentucky	72.94	120.	Kansas	52.71	73.	Washington St	68.18	102.	Colorado State	57.94	114.	North Texas	54.16
58.	Missouri	71.15	ACC			74.	Oregon State	67.81	116.	New Mexico	53.91	115.	Southern Miss	54.05
70.	Tennessee	68.40	Big Ten			96.	Arizona	59.89	122.	UNLV	49.83	121.	FIU	52.13
81.	South Carolina	65.54	Big Ten			American			MAC			123.	UTEP	47.52
89.	Yankee	56.43	Big Ten			American			MAC			124.	Old Dominion	45.81
Big Ten			Big Ten			American			MAC			Sun Belt		
Rk	Team	Rating	Rk	Team	Rating	Rk	Team	Rating	Rk	Team	Rating	Rk	Team	Rating
5.	Ohio State	90.71	14.	North Carolina	82.90	15.	Cincinnati	82.59	61.	Toledo	70.44	39.	Appalachian St	74.79
6.	Wisconsin	86.80	20.	Miami (FL)	80.30	28.	UCF	78.40	84.	Central Mich	65.11	41.	Coastal Carolina	74.63
7.	Penn State	86.04	29.	Virginia Tech	77.60	54.	SMU	71.80	87.	Western Mich	63.28	55.	UL-Lafayette	71.60
9.	Iowa	84.95	31.	NC State	76.13	58.	Tulane	70.33	88.	Ball State	63.22	61.	Texas Tech	70.85
17.	Michigan	82.43	34.	Virginia	75.33	63.	Houston	69.29	91.	Kent State	62.68	62.	Georgia State	62.64
27.	Indiana	78.84	35.	Pittsburgh	75.23	68.	Memphis	68.85	92.	Buffalo	61.13	63.	Georgia State	62.64
38.	Michigan State	74.96	50.	Wake Forest	72.47	69.	Memphis	68.85	99.	Miami (OH)	58.86	83.	Troy	65.20
42.	Nebraska	74.58	57.	Boston College	71.19	71.	Tulsa	68.31	99.	Miami (OH)	58.86	98.	Arkansas State	58.88
43.	Minnesota	74.48	62.	Florida State	70.34	71.	Tulsa	68.31	101.	Eastern Mich	58.62	104.	Georgia State	57.64
44.	Purdue	73.92	64.	Louisville	70.18	93.	East Carolina	61.07	106.	Northern Illinois	57.04	108.	Ga Southern	56.64
53.	Maryland	71.85	79.	Georgia Tech	66.15	105.	USF	57.36	112.	Ohio	55.04	110.	Texas State	55.58
65.	Rutgers	69.58	90.	Syracuse	62.71	117.	Temple	53.73	126.	Akron	42.10	119.	South Alabama	53.03
67.	Northwestern	69.47	94.	Duke	60.61	118.	Navy	53.51	127.	Bowling Green	39.58	125.	UL-Monroe	43.22
89.	Illinois	62.88												

Week 3 Computer Projected Lines for Every CFB Game

For the past five seasons we have posted computer projected lines for every game. **Games where there was of difference of more than 3 points saw our computer lines actually beat the Vegas line at a 373-302-12 (55%) including an outstanding 71-50 (59%) last year! Last week's plays went 5-1 and are 10-7 on the season.** That's still pretty solid and actually better than our own handicapping in some seasons. Keep in mind, these computer lines don't take into consideration off-the-field factors like revenge or flat spots. They are basically a power-rating number difference between the two teams that also takes into consideration the home field advantage.

Of the 9 games where our computer is off more than 3 points compared to the Vegas line (highlighted), our favorite team this week to back would be **Northwestern -3**.

The Comp column is the computer projected line and the Diff column is the difference between the Vegas line and the Computer line. "+" numbers in the difference column say back the underdog. "-" numbers in the difference column say back the favorite. Let us know if you have questions.

Thursday, Sept 16th	Line	Comp	Diff	Saturday, Sept 18th	Line	Comp	Diff
103 Ohio				155 Colorado St			
104 UL-Lafayette	-20.0	-18.8	+1.2	156 Toledo	-14.5	-15.5	-1.0
Friday, Sept 17th	Line	Comp	Diff	157 Northwestern			
105 UCF				158 Duke	+3.0	+6.6	-3.6
106 Louisville	+7.0	+5.5	+1.5	159 Georgia Southern			
107 Maryland				160 Arkansas	-23.5	-22.3	+1.2
108 Illinois	+7.5	+7.0	+0.5	161 Mississippi St			
Saturday, Sept 18th	Line	Comp	Diff	162 Memphis	+3.5	+3.3	+0.2
109 Michigan St				163 Arkansas St			
110 Miami, FL	-6.5	-8.6	-2.1	164 Washington	-16.5	-20.2	-3.7
111 Northern Illinois				165 Middle Tennessee			
112 Michigan	-27.5	-28.9	-1.4	166 UTSA	-12.5	-10.8	+1.7
113 Connecticut				167 Old Dominion			
114 Army	-34.0	-31.0	+3.0	168 Liberty	-27.5	-29.1	-1.6
115 Eastern Michigan				169 East Carolina			
116 Massachusetts	+22.0	+18.4	+3.6	170 Marshall	-10.0	-8.2	+1.8
117 Boston College				171 Troy			
118 Temple	+16.0	+15.0	+1.0	172 Southern Miss	+10.0	+8.7	+1.3
119 Virginia Tech				173 FIU			
120 West Virginia	-3.0	-0.2	+2.8	174 Texas Tech	-20.0	-21.2	-1.2
121 Coastal Carolina				175 Charlotte			
122 Buffalo	+14.0	+11.0	+3.0	176 Georgia St	-4.0	-5.0	-1.0
123 Western Michigan				177 Utah			
124 Pittsburgh	-15.0	-14.7	+0.3	178 San Diego St	+9.5	+11.0	-1.5
125 Nebraska				179 South Carolina			
126 Oklahoma	-22.0	-23.1	-1.1	180 Georgia	-31.5	-32.6	-1.1
127 Cincinnati				181 Auburn			
128 Indiana	+4.0	+1.3	+2.7	182 Penn St	-6.0	-7.6	-1.6
129 New Mexico				183 Utah St			
130 Texas A&M	-29.5	-34.0	-4.5	184 Air Force	-8.0	-8.3	-0.3
131 Minnesota				185 Virginia			
132 Colorado	-2.5	-0.7	+1.8	186 North Carolina	-9.0	-10.3	-1.3
133 Ball St				187 Central Michigan			
134 Wyoming	-7.0	-4.8	+2.2	188 LSU	-19.0	-20.7	-1.7
135 Nevada				189 UAB			
136 Kansas St	+2.0	+0.4	+1.6	190 North Texas	+12.0	+10.4	+1.6
137 Purdue				191 Stanford			
138 Notre Dame	-8.0	-9.6	-1.6	192 Vanderbilt	+12.0	+13.7	-1.7
139 Georgia Tech				193 Rice			
140 Clemson	-28.5	-31.8	-3.3	194 Texas	-26.0	-27.8	-1.8
141 USC				195 Tulane			
142 Washington St	+8.5	+8.5	0.0	196 Ole Miss	-14.0	-16.1	-2.1
143 Alabama				197 Oklahoma St			
144 Florida	+14.5	+14.2	+0.3	198 Boise St	-4.0	-0.7	+3.3
145 Florida St				199 Arizona St			
146 Wake Forest	-5.0	-4.4	+0.6	200 BYU	+3.5	+2.3	+1.2
147 Kent St				201 Iowa St			
148 Iowa	-22.5	-25.5	-3.0	202 UNLV	+31.5	+32.3	-0.8
149 SMU				203 Fresno St			
150 Louisiana Tech	+12.5	+12.3	+0.2	204 UCLA	-11.5	-13.1	-1.6
151 Tulsa				205 San Jose St			
152 Ohio St	-24.5	-26.4	-1.9	206 Hawaii	+6.5	+7.3	-0.8
153 Baylor							
154 Kansas	+18.0	+18.4	-0.4				

Week 3 CFB ATS Trends

1. Purdue is 18-4 ATS as a road underdog since 2014! This week Purdue is +8 at Notre Dame.
2. Liberty has now covered 10 straight games dating back to last year by an average of 9.5 ppg. Liberty head coach Hugh Freeze is 66-35-1 ATS all-time in his career! Best in the country ATS wise.
3. Penn St has won and covered 6 straight games dating back to last year (after an 0-5 start in 2020).
4. Connecticut is 0-3 ATS this year failing to cover the spread by 14.8 ppg!
5. Fresno St is 3-0 ATS this year with an average cover margin of 16.5 ppg!

Betting CFB Openers

Every Sunday in Vegas at 11am PT, Circa Sports is the first book in the world to release CFB lines and we bet them every week. We think it's the best value bets we make all week. Last season was the first season where we tracked every single bet we made and posted them in the weekly newsletters. We were very pleased with our 119-76-3 (61%) record on these Sunday bets with an average line value of 2.6 ppg! Last week we were super aggressive and made 22 bets vs the Circa openers and 66 bets overall (counting FCS). We were pleased with a 46-20 record with the break-down below including our CLV (closing line value).

Brad's Personal CFB Bets (heavy volume on openers and not widely available lines):

FBS vs FBS: 52-31, CLV: 70-10-3 +2.8 ppg
 FBS vs FCS: 49-21, CLV: 66-2-1 +4.0 ppg
 FCS vs FCS: 14-7, CLV 12-0-9 +0.9 ppg
 Circa FBS Openers: 15-7, CLV 20-2 +3.25 ppg

Week 3 Circa Opener Bets (see pics on Pg 5).

- (103) Ohio +22...now +20
- (106) Louisville +9...now +7
- (109) Michigan St +8...now +6.5
- (119) Virginia Tech +3...still +3
- (123) Western Michigan +16 and +14...now +15
- (123) Western Michigan OVER 57.5...now 58.5
- (125) Nebraska +23...now +22
- (128) Indiana +4...still +4
- (130) Texas A&M -25...now -29.5
- (132) Colorado +3...now -2.5
- (137) Purdue +8...still +8
- (137) Purdue OVER 57.5...now 58
- (142) Washington St +10...now +8.5
- (143) Alabama -13...now -14.5
- (146) Wake Forest UNDER 62...now 61.5
- (147) Kent St +21...now +22.5
- (149) SMU OVER 64.5...now 66
- (153) Baylor -14...now -18
- (157) Northwestern -2...now -3
- (161) Mississippi St OVER 58.5...now 64
- (164) Washington -14.5...now -16.5
- (166) UTSA -9...now -12.5
- (168) Liberty -23...now -27.5
- (169) East Carolina +10...still +10
- (171) Troy -8...now -10
- (176) Georgia St -2...now -4
- (177) Utah -7...now -9.5
- (182) Penn St -4.5...now -6
- (183) Utah St +11...now +8
- (187) Central Michigan OVER 58.5...now 61
- (187) Central Michigan +21...now +19
- (190) North Texas UNDER 58.5...now 57
- (191) Stanford -9...now -12
- (195) Tulane OVER 71.5...now 76
- (197) Oklahoma St +6 and +4...now +4
- (199) Arizona St -2...now -3.5
- (204) UCLA -9...now -11.5

4★ = BEST
3★ = BETTER
2★ = GOOD
1★ = FAIR

THE POWERS' PACK

3★ CAROLINA (+3.5) over New Orleans
2★ Minnesota (+4) over ARIZONA
2★ PITTSBURGH (-5.5) over Las Vegas
No teasers this week

Games in Rotation Order
Thursday, September 16th

HOME TEAM IN CAPS

WASHINGTON 20 N.Y. Giants 17. It's been 16 years since the NFC East division champ has repeated (bad news for Washington). The Giants were better than the scoreboard said last week as they had drives end at the Denver 19, 6 and 13-yard lines in the second half all end without points. Meanwhile we lost on these pages backing Washington. The Football Team had their chances but we felt fortunate to be in the game considering the Chargers ineptitude in the red zone and the injury to QB Fitzpatrick. Heinicke will get the start here. The Giants have won 5 straight in the series but we lean UNDER.

Sunday, September 19th

3★ CAROLINA 23 New Orleans 21. Obviously, New Orleans was dominant in the blowout win over Green Bay. It was arguably the most shocking final of week one. However, this is a league where you're never as good or bad as you look the week prior especially after week 1. New Orleans did benefit from +3 in TO's and Jameis Winston's 148 passing yards were the fewest in a 5-TD game in NFL history. Carolina led the Jets 16-0 at halftime and were dominant than the final as the Jets got a late TD (CAR was +2.2 in yards per play). We're fans of head coach Matt Rhule who made us a lot of money in CFB. The Saints had multiple players and coaches test positive for COVID on Monday. We like the home dog outright here.

CLEVELAND 30 Houston 18. Really tough loss for the Browns last week after blowing a 22-10 halftime lead at the Chiefs. The Browns are now 0-16-1 in season openers but times they are a changing for this franchise and we think they are one of the best teams in the NFL right now. Meanwhile, we won on these pages with the Texans in their comfortable outright upset win over the Jaguars. QB Tyrod Taylor was efficient but Houston was +3 in TO's. Call us gutless but we're not comfortable laying doubles with this Cleveland franchise just yet.

CHICAGO 24 Cincinnati 22. Is it Justin Fields time yet for the Bears? It might have to wait another week as QB Andy Dalton gets a chance for revenge against his former team. The Bears defense was torched last week and the offensive line isn't great. On the other side, the future is now for the Bengals as Joe Burrow made a triumphant return in an OT upset of the Vikings. Still they are 2-14 SU on the road under head coach Zac Taylor.

2★ PITTSBURGH 28 Las Vegas 20. We like the spot here for the Steelers catching the Raiders off the dramatic OT win over the Ravens on MNF. Las Vegas is now traveling on a short week and that game was emotionally draining just watching it, let alone playing in it. We would have liked it as our top play had Pittsburgh not pulled the shocker over the Bills last Sunday. They outscored Buffalo 17-6 in the fourth quarter after trailing by double-digits. The Steelers are better in the dog role than the chalk role under Tomlin but we like them here.

Buffalo 25 MIAMI 21. Can't believe we're already saying this but the Bills can ill afford to take another loss. They dominated the Steelers for much of the game only to get outscored 17-6 in the final quarter. A blocked punt TD was the major difference. Meanwhile, Miami benefitted from 3 New England fumbles in their upset win that cost us a best bet on these pages. Miami was outgained 393-259. Despite those surprising results, the market is all over this one with Buffalo favored by more than a FG. We don't see much value.

L.A. Rams 25 INDIANAPOLIS 23. How's that for a first game performance with a new team? Surround QB Stafford with some weapons and look out. Stafford had the highest passing efficiency rating in his 13-year NFL career last week. Meanwhile Indianapolis has now lost 8 straight season openers after a disappointing performance vs Seattle. QB Wentz looked okay at 25 of 38 for 251 yards and a 2-0 ratio. You could bet on every NFL this season in the summer at the Westgate Las Vegas Superbook. They had this line Indianapolis -1.5. That's a pretty big swing after just one week. We lean with the Colts.

San Francisco 27 PHILADELPHIA 23. The 49ers had a misleading 41-33 win over the Lions last week as Detroit got a couple of late

TD's and 2-point conversions to shockingly get the back-door cover. What was more shocking was the Eagles destroying the Falcons 32-6 as 3.5-point road underdogs. Jalen Hurts threw 3 TD passes and Nick Sirianni got his first win as head coach. The offensive line is now healthy for the Eagles while the 49ers were dealt with a couple of injuries to RB Raheem Mostert and CB Jason Verrett. Pass.

Denver 26 JACKSONVILLE 18. We cashed on these pages fading Jacksonville last week and the Urban Meyer experiment already looks bad. Jacksonville got a majority of their production after trailing 34-7. QB Trevor Lawrence had an uneven start to say the least (322 pass yards but 3 INT's). Meanwhile, all Teddy Bridgewater does is cover point spreads as a starting QB. He is now 37-14 ATS and 22-3 ATS on the road (according to Marc Lawrence's Playbook). Denver beat the Giants on the road by 2 TD's and we look for another win and cover.

New England 24 N.Y. JETS 17. We lost with the Patriots on these pages last week. We felt we had the right side as they outgained Miami by more than 100 yards but NE had 3 key fumbles. QB Mac Jones looked more polished than any of the rookie QB's and that includes N.Y. Jets QB Zach Wilson. Jones was 29 of 39 for 281 yards while Wilson struggled mightily in the first half. Wilson settled down in the second half but the Jets were already down multiple scores. The Jets offensive line isn't good and now they lost Mekhi Becton. We wanted a cheaper number with the Pats here.

2★ Minnesota (plus the points) ARIZONA 26 Minnesota 25. You're never as good or as bad as you look in Week 1. That's why we're going with the Vikings here who come in off a loss to the Bengals in OT. Meanwhile the Cardinals destroyed the Titans and you can make a case, they had the most impressive Week 1 win along with New Orleans. QB Kyler Murray had a career-high 4 TD passes and DE Chandler Jones had 5 sacks! The Vikings can ill afford to start 0-2 and will play their "A" game.

TAMPA BAY 31 Atlanta 18. The Bucs had too many mistakes last Thursday and were fortunate to come away with a win over the Cowboys. The ageless Tom Brady had 379 yards and 4 TD's and led another game-winning drive. Meanwhile, the Falcons couldn't have looked worse in a 32-6 loss to the Eagles as 3.5-point home favorites in head coach Arthur Smith's debut. They need to get the short pass game going with Matt Ryan just like Dallas did with Dak last week. This is a tall point-spread so early in the season. We lean UNDER.

SEATTLE 28 Tennessee 24. We expect the Titans to bounce back after their blowout loss at home to the Cardinals. They need to protect QB Tannehill better as he was sacked 6 times. Meanwhile, Seattle QB Russell Wilson had the 11th game of his career with 4 or more TD passes and ZERO INT's. It was his 2nd highest QB rating of his 10-year career. Seattle hasn't been a great home favorite as of late.

L.A. CHARGERS 31 Dallas 28. The Chargers beat us on these pages last week as they notched an impressive win at Washington. QB Herbert threw for 337 yards and the Chargers upgraded offensive line held off a good Washington defensive line. Note former coach Anthony Lynn was atrocious in close games so winning a close one to start is a good sign for new head coach Brandon Staley. This looks like a play-off team. Meanwhile, we were impressed with the Cowboys in their Thursday Night loss at Tampa Bay. Dak looked healthy and went 42 of 58 for 403 yards and a 3-1 ratio. Their short pass attack vs Tampa's defense was sharp. How good is this offense going to be when they are completely healthy? It's a high total but we're going OVER.

Kansas City 28 BALTIMORE 27. Two teams that come in off disparate 2H's last week. KC rallied from 12-points down to beat the Browns last week. QB Mahomes is now 11-0 in September with a 35-0 TD-to-INT ratio. His 35 straight TD passes without an interception in September is the longest streak in any month by any QB in NFL History! Wow! Meanwhile, the Ravens blew a double-digit lead on MNF to the Raiders. Baltimore was 81-0 under Harbaugh when leading by 14 or more in the regular season. QB Lamar Jackson's two fumbles proved costly. The Chiefs continue to win but not cover as they are on a 1-10-1 ATS run dating back to last year despite a 10-2 SU record.

Monday, September 20th

GREEN BAY 30 Detroit 17. Last week the Packers had their worst loss since 2006 and it was the worst loss of Aaron Rodgers' career. It was an embarrassing start to the season for a team that has made back-to-back NFC Championship games and you wonder what the mood is in the locker-room after the Rodgers' drama this summer. Meanwhile, the Lions had a misleading 41-33 loss to the 49ers in a game they trailed 38-10 at one point. Packers get a bounce-back but we'd prefer to lay the points with them in the first half here.

2021 NFL Schedules with Logs

Arizona (SU: 1-0, ATS: 1-0, O/U: 0-1)

Date	Opponent	Line Score	ATS	O/U
9/12	at Tennessee	+2' 38-13 W	u54	
9/19	Minnesota			
9/26	at Jacksonville			
10/3	at L.A. Rams			
10/10	San Francisco			
10/17	at Cleveland			
10/24	Houston			
10/28	Green Bay			
11/7	at San Francisco			
11/14	Carolina			
11/21	at Seattle			
11/28				
12/5	at Chicago			
12/13	L.A. Rams			
12/19	at Detroit			
12/25	Indianapolis			
1/2	at Dallas			
1/9	Seattle			

Atlanta (SU: 0-1, ATS: 0-1, O/U: 0-1)

Date	Opponent	Line Score	ATS	O/U
9/12	Philadelphia	-3' 6-32 L	u48	
9/19	at Tampa Bay			
9/26	at N.Y. Giants			
10/3	Washington			
10/10	† N.Y. Jets			
10/17				
10/24	at Miami			
10/31	Carolina			
11/7	at New Orleans			
11/14	at Dallas			
11/18	New England			
11/28	at Jacksonville			
12/5	Tampa Bay			
12/12	at Carolina			
12/19	at San Francisco			
12/26	Detroit			
1/2	at Buffalo			
1/9	New Orleans			

Baltimore (SU: 0-1, ATS: 0-1, O/U: 1-0)

Date	Opponent	Line Score	ATS	O/U
9/13	at Las Vegas	-3' 27-33 L	o50	
9/19	Kansas City			
9/26	at Detroit			
10/3	at Denver			
10/11	Indianapolis			
10/17	L.A. Chargers			
10/24	Cincinnati			
10/31				
11/7	Minnesota			
11/11	at Miami			
11/21	at Chicago			
11/28	Cleveland			
12/5	at Pittsburgh			
12/12	at Cleveland			
12/19	Green Bay			
12/26	at Cincinnati			
1/2	L.A. Rams			
1/9	Pittsburgh			

Buffalo (SU: 0-1, ATS: 0-1, O/U: 0-1)

Date	Opponent	Line Score	ATS	O/U
9/12	Pittsburgh	-6' 16-23 L	u47	
9/19	at Miami			
9/26	Washington			
10/3	Houston			
10/10	at Kansas City			
10/18	at Tennessee			
10/24				
10/31	Miami			
11/7	at Jacksonville			
11/14	at N.Y. Jets			
11/21	Indianapolis			
11/25	at New Orleans			
12/6	New England			
12/12	at Tampa Bay			
12/18	Carolina			
12/26	at New England			
1/2	Atlanta			
1/9	N.Y. Jets			

Carolina (SU: 1-0, ATS: 1-0, O/U: 0-1)

Date	Opponent	Line Score	ATS	O/U
9/12	N.Y. Jets	-3' 19-14 W	u44	
9/19	New Orleans			
9/23	at Houston			
10/3	at Dallas			
10/10	Philadelphia			
10/17	Minnesota			
10/24	at N.Y. Giants			
10/31	at Atlanta			
11/7	New England			
11/14	at Arizona			
11/21	Washington			
11/28	at Miami			
12/5				
12/12	Atlanta			
12/18	at Buffalo			
12/26	Tampa Bay			
1/2	at New Orleans			
1/9	at Tampa Bay			

Chicago (SU: 0-1, ATS: 0-1, O/U: 1-0)

Date	Opponent	Line Score	ATS	O/U
9/12	at L.A. Rams	+9' 14-34 L	o46	
9/19	Cincinnati			
9/26	at Cleveland			
10/3	Detroit			
10/10	at Las Vegas			
10/17	Green Bay			
10/24	at Tampa Bay			
10/31	San Francisco			
11/8	at Pittsburgh			
11/14				
11/21	Baltimore			
11/25	at Detroit			
12/5	Arizona			
12/12	at Green Bay			
12/20	Minnesota			
12/26	at Seattle			
1/2	N.Y. Giants			
1/9	at Minnesota			

Cincinnati (SU: 1-0, ATS: 1-0, O/U: 1-0)

Date	Opponent	Line Score	ATS	O/U
9/12	Minnesota	+3' 27-24 W	o47	
9/19	at Chicago			
9/26	at Pittsburgh			
9/30	Jacksonville			
10/10	Green Bay			
10/17	at Detroit			
10/24	at Baltimore			
10/31	at N.Y. Jets			
11/7	Cleveland			
11/14				
11/21	at Las Vegas			
11/28	Pittsburgh			
12/5	L.A. Chargers			
12/12	San Francisco			
12/19	at Denver			
12/26	Baltimore			
1/2	Kansas City			
1/9	at Cleveland			

Cleveland (SU: 0-1, ATS: 1-0, O/U: 1-0)

Date	Opponent	Line Score	ATS	O/U
9/12	at Kansas City	+5' 29-33 L	o54	
9/19	Houston			
9/26	Chicago			
10/3	at Minnesota			
10/10	at L.A. Chargers			
10/17	Arizona			
10/24	Denver			
10/31	Pittsburgh			
11/7	at Cincinnati			
11/14	at New England			
11/21	Detroit			
11/28	at Baltimore			
12/5				
12/12	Baltimore			
12/18	Las Vegas			
12/25	at Green Bay			
1/2	at Pittsburgh			
1/9	Cincinnati			

Dallas (SU: 0-1, ATS: 1-0, O/U: 1-0)

Date	Opponent	Line Score	ATS	O/U
9/9	at Tampa Bay	+9' 29-31 W	o52	
9/19	at L.A. Chargers			
9/27	Philadelphia			
10/3	Carolina			
10/10	N.Y. Giants			
10/17	at New England			
10/24				
10/31	at Minnesota			
11/7	Denver			
11/14	Atlanta			
11/21	at Kansas City			
11/25	Las Vegas			
12/2	at New Orleans			
12/12	at Washington			
12/19	at N.Y. Giants			
12/26	Washington			
1/2	Arizona			
1/9	at Philadelphia			

Denver (SU: 1-0, ATS: 1-0, O/U: 0-1)

Date	Opponent	Line Score	ATS	O/U
9/12	at N.Y. Giants	-2' 27-13 W	u41	
9/19	at Jacksonville			
9/26	N.Y. Jets			
10/3	Baltimore			
10/10	at Pittsburgh			
10/17	Las Vegas			
10/24	at Cleveland			
10/31	Washington			
11/7	at Dallas			
11/14	Philadelphia			
11/21				
11/28	L.A. Chargers			
12/5	at Kansas City			
12/12	Detroit			
12/19	Cincinnati			
12/26	at Las Vegas			
1/2	at L.A. Chargers			
1/9	Kansas City			

Detroit (SU: 0-1, ATS: 1-0, O/U: 1-0)

Date	Opponent	Line Score	ATS	O/U
9/12	San Francisco	+9' 33-41 W	o46	
9/20	at Green Bay			
9/26	Baltimore			
10/3	at Chicago			
10/10	at Minnesota			
10/17	Cincinnati			
10/24	at L.A. Rams			
10/31	Philadelphia			
11/7				
11/14	at Pittsburgh			
11/21	at Cleveland			
11/25	Chicago			
12/5	Minnesota			
12/12	at Denver			
12/19	Arizona			
12/26	at Atlanta			
1/2	at Seattle			
1/9	Green Bay			

Green Bay (SU: 0-1, ATS: 0-1, O/U: 0-1)

Date	Opponent	Line Score	ATS	O/U
9/12	at New Orleans	-3' 3-38 L	u49	
9/20	Detroit			
9/26	at San Francisco			
10/3	Pittsburgh			
10/10	at Cincinnati			
10/17	at Chicago			
10/24	Washington			
10/28	at Arizona			
11/7	at Kansas City			
11/14	Seattle			
11/21	at Minnesota			
11/28	L.A. Rams			
12/5				
12/12	Chicago			
12/19	at Baltimore			
12/25	Cleveland			
1/2	Minnesota			
1/9	at Detroit			

Houston (SU: 1-0, ATS: 1-0, O/U: 1-0)

Date	Opponent	Line Score	ATS	O/U
9/12	Jacksonville	+3' 37-21 W	o45	
9/19	at Cleveland			
9/23	Carolina			
10/3	at Buffalo			
10/10	New England			
10/17	at Indianapolis			
10/24	at Arizona			
10/31	L.A. Rams			
11/7	at Miami			
11/14				
11/21	at Tennessee			
11/28	N.Y. Jets			
12/5	Indianapolis			
12/12	Seattle			
12/19	at Jacksonville			
12/26	L.A. Chargers			
1/2	at San Francisco			
1/9	Tennessee			

Indianapolis (SU: 0-1, ATS: 0-1, O/U: 0-1)

Date	Opponent	Line Score	ATS	O/U
9/12	Seattle	+3' 16-28 L	u49	
9/19	L.A. Rams			
9/26	at Tennessee			
10/3	at Miami			
10/11	at Baltimore			
10/17	Houston			
10/24	at San Francisco			
10/31	Tennessee			
11/4	N.Y. Jets			
11/14	at Jacksonville			
11/21	at Buffalo			
1				

2021 CFB Schedules with Logs

Air Force (SU: 2-0, ATS: 1-1, O/U: 0-2)

Date	Opponent	Line Score	ATS/O/U
9/4	Lafayette	-40' 35-14 L	u49'
9/11	at Navy	-6 23-3 W	u39'
9/18	Utah State		
9/25	Florida Atlantic		
10/2	at New Mexico		
10/9	Wyoming		
10/16	at Boise State		
10/23	San Diego State		

Akron (SU: 0-2, ATS: 0-2, O/U: 2-0)

Date	Opponent	Line Score	ATS/O/U
9/4	at Auburn	+7' 10-60 L	o56
9/11	Temple	+6' 24-45 L	o52'
9/18	Bryant		
9/25	at Ohio State		
10/2	Ohio		
10/9	at Bowling Green		
10/16	at Miami (OH)		
10/23	Buffalo		
10/30			
11/2	Ball State		
11/9	at Western Michigan		
11/20	Kent State		
11/27	at Toledo		

Alabama (SU: 2-0, ATS: 1-1, O/U: 1-1)

Date	Opponent	Line Score	ATS/O/U
9/4	† Miami (FL)	-19' 44-13 W	u61
9/11	at Florida	-54 48-14 L	o60'
9/18	at Florida		
9/25	Southern Miss		
10/2	Ole Miss		
10/9	at Texas A&M		
10/16	at Mississippi State		
10/23	Tennessee		
10/30			
11/6	LSU		
11/13	New Mexico State		
11/20	Arkansas		
11/27	at Auburn		

Appalachian St (SU: 1-1, ATS: 2-0, O/U: 0-2)

Date	Opponent	Line Score	ATS/O/U
9/2	† East Carolina	-9 33-19 W	u56
9/11	at Miami (FL)	+7' 23-25 W	u55
9/18	Elon		
9/23	Marshall		
10/2	at Georgia State		
10/9			
10/12	at UL-Lafayette		
10/20	Coastal Carolina		
10/30	UL-Monroe		
11/6	at Arkansas State		
11/13	South Alabama		
11/20	at Troy		
11/27	Georgia Southern		

Arizona (SU: 2-0, ATS: 1-1, O/U: 1-1)

Date	Opponent	Line Score	ATS/O/U
9/4	† BYU	+13' 16-24 W	u54
9/11	San Diego State	-1' 14-38 L	o46
9/18	Northern Arizona		
9/25	at Oregon		
10/2	UCLA		
10/16	at Colorado		
10/22	Washington		
10/30	at USC		
11/6	California		
11/13	Utah		
11/19	at Washington State		
11/27	at Arizona State		

Arizona State (SU: 2-0, ATS: 0-2, O/U: 0-2)

Date	Opponent	Line Score	ATS/O/U
9/2	Southern Utah	-44' 41-14 L	u56
9/11	UNLV	-34' 37-10 L	u55'
9/18	at BYU		
9/25	Colorado		
10/2	at UCLA		
10/8	Stanford		
10/16	at Utah		
10/23			
10/30	Washington State		
11/6	USC		
11/13	at Washington		
11/20	at Oregon State		
11/27	Arizona		

Arkansas (SU: 2-0, ATS: 2-0, O/U: 2-0)

Date	Opponent	Line Score	ATS/O/U
9/4	Rice	-19' 38-17 W	o50
9/11	Texas	+6 40-21 W	o57'
9/18	Georgia Southern		
9/25	† Texas A&M		
10/2	at Georgia		
10/9	at Ole Miss		
10/16	Auburn		
10/23	Arkansas-Pine Bluff		
10/30			
11/3	Mississippi State		
11/13	at LSU		
11/20	at Alabama		
11/26	Missouri		

Arkansas State (SU: 1-1, ATS: 2-0, O/U: 1-1)

Date	Opponent	Line Score	ATS/O/U
9/4	Central Arkansas	-13' 40-21 W	u64
9/11	Memphis	+5' 50-55 W	o64'
9/18	at Washington		
9/25	at Tulsa		
10/2	at Georgia Southern		
10/7	Coastal Carolina		
10/16			
10/21	UL-Lafayette		
10/30	at South Alabama		
11/6	Appalachian State		
11/13	at UL-Monroe		
11/20	at Georgia State		
11/27	Texas State		

Army (SU: 2-0, ATS: 1-1, O/U: 2-0)

Date	Opponent	Line Score	ATS/O/U
9/4	at Georgia State	+2' 43-10 W	o50
9/11	W. Kentucky	-6 38-35 L	o51'
9/18	Connecticut		
9/25	Miami (OH)		
10/2	at Ball State		
10/9			
10/16	at Wisconsin		
10/23	Wake Forest		
10/30			
11/6	† Air Force		
11/13	Bucknell		
11/20	Massachusetts		
11/27	at Liberty		
12/4			
12/11	† Navy		

Auburn (SU: 2-0, ATS: 2-0, O/U: 2-0)

Date	Opponent	Line Score	ATS/O/U
9/4	Akron	-37' 60-10 W	o56
9/11	Alabama State	-49' 62-0 W	o60'
9/18	at Penn State		
9/25	Georgia State		
10/2	at LSU		
10/9	Georgia		
10/16	at Arkansas		
10/23			
10/30	Ole Miss		
11/6	at Texas A&M		
11/13	Mississippi State		
11/20	at South Carolina		
11/27	Alabama		

Ball State (SU: 1-1, ATS: 0-2, O/U: 0-2)

Date	Opponent	Line Score	ATS/O/U
9/2	Western Illinois	-31 31-21 L	u58
9/18	at Penn State	+23 13-44 L	u58'
9/25	at Wyoming		
10/2	Toledo		
10/9	at Western Michigan		
10/16	at Eastern Michigan		
10/23	Miami (OH)		
10/30			
11/2	at Akron		
11/10	at Northern Illinois		
11/17	Central Michigan		
11/23	Buffalo		

Baylor (SU: 2-0, ATS: 1-1, O/U: 1-1)

Date	Opponent	Line Score	ATS/O/U
9/4	at Texas State	-13' 29-20 L	u52
9/11	Texas Southern	-44' 66-7 W	o53'
9/18	at Kansas		
9/25	Iowa State		
10/2	at Oklahoma State		
10/9	West Virginia		
10/16	BYU		
10/23			
10/30	Texas		
11/6	at TCU		
11/13	Oklahoma		
11/20	at Kansas State		
11/27	Texas Tech		

Boise State (SU: 1-1, ATS: 2-0, O/U: 1-0-1)

Date	Opponent	Line Score	ATS/O/U
9/2	at UCF	+6 31-36 W	o56
9/10	UTEP	-25 54-13 W	p67'
9/18	Oklahoma State		
9/25	at Utah State		
10/2	Nevada		
10/9	at BYU		
10/16	Air Force		
10/23			
10/30	at Colorado State		
11/6	at Fresno State		
11/12	Wyoming		

Boston College (SU: 2-0, ATS: 1-1, O/U: 1-1)

Date	Opponent	Line Score	ATS/O/U
9/4	Colgate	-42' 51-0 W	u56
9/11	at Massachusetts	-38' 45-28 L	o57'
9/18	at Temple		
9/25	Missouri		
10/2	at Clemson		
10/9			
10/16	NC State		
10/23	at Louisville		
10/30	at Syracuse		
11/5	Virginia Tech		
11/13	at Georgia Tech		
11/20	Florida State		
11/27	Wake Forest		

Bowling Green (SU: 0-2, ATS: 2-0, O/U: 0-2)

Date	Opponent	Line Score	ATS/O/U
9/2	at Tennessee	+37 6-38 W	u60
9/11	South Alabama	+14 19-22 W	u48
9/18	Murray State		
9/25	at Minnesota		
10/2	at Kent State		
10/9	Akron		
10/16	at Northern Illinois		
10/23	Eastern Michigan		
10/30	at Buffalo		
11/6			
11/10	Toledo		
11/16	at Miami (OH)		
11/26	Ohio		

Buffalo (SU: 1-1, ATS: 1-1, O/U: 1-1)

Date	Opponent	Line Score	ATS/O/U
9/2	Wagner	-43' 69-7 W	o54
9/11	at Nebraska	+14 3-28 L	u54
9/18	Coastal Carolina		
9/25	at Old Dominion		
10/2	Western Michigan		
10/9	at Kent State		
10/16	Ohio		
10/23	at Akron		
10/30	Bowling Green		
11/6			
11/9	at Miami (OH)		
11/17	Northern Illinois		
11/23	at Ball State		

BYU (SU: 2-0, ATS: 1-1, O/U: 0-2)

Date	Opponent	Line Score	ATS/O/U
9/11	at Arizona	-13' 24-16 L	u54
9/18	Utah	+7 26-17 W	u50
9/25	Arizona State		
10/2	USF		
10/16	at Utah State		
10/23	Boise State		
10/30	at Baylor		
11/6	at Washington State		
11/13	at Virginia		
11/20	Idaho State		
11/27	at USC		

California (SU: 0-2, ATS: 1-1, O/U: 1-1)

Date	Opponent	Line Score	ATS/O/U
9/4	Nevada	-3 17-22 L	u52
9/11	at TCU	+11' 32-34 W	o62'
9/18	Northwestern State		
9/25	at Washington		
10/2	Washington State		
10/9			
10/15	at Oregon		
10/23	Colorado		
10/30	Oregon State		
11/6	at Arizona		
11/13	USC		
11/20	at Stanford		
11/27	at UCLA		

Central Michigan (SU: 1-1, ATS: 2-0, O/U: 0-2)

Date	Opponent	Line Score	ATS/O/U
9/4	at Missouri	+14 24-34 W	u59
9/11	Robert Morris	-37' 45-0 W	u53'
9/18	at LSU		
9/25	FIU		
10/2	at Miami (OH)		
10/9	at Ohio		
10/16	Toledo		
10/23	Northern Illinois		
10/30			
11/3	at Western Michigan		
11/10	Kent State		
11/17	at Ball State		
11/26	Eastern Michigan		

Charlotte (SU: 2-0, ATS: 2-0, O/U: 0-2)

Date	Opponent	Line Score	ATS/O/U
9/3	Duke	+6' 31-28 W	u60
9/11	Gardner-Webb	-23 38-10 W	u58
9/18	at Georgia State		
9/24	Middle Tennessee		
10/2	at Illinois		
10/9			

Kansas (SU: 1-1, ATS: 0-1, O/U: 1-1)

Table with columns: Date, Opponent, Line Score, ATS/O/U. Rows include South Dakota, Carolina, Baylor, Duke, Iowa State, Texas Tech, Oklahoma, Oklahoma State, Kansas State, Texas, TCU, West Virginia.

Kansas State (SU: 2-0, ATS: 1-1, O/U: 0-2)

Table with columns: Date, Opponent, Line Score, ATS/O/U. Rows include Stanford, Southern Illinois, Nevada, Oklahoma State, Oklahoma, Iowa State, Texas Tech, TCU, Kansas, West Virginia, Baylor, Texas.

Kent State (SU: 1-1, ATS: 1-1, O/U: 0-2)

Table with columns: Date, Opponent, Line Score, ATS/O/U. Rows include Texas A&M, VMI, Iowa, Maryland, Bowling Green, Buffalo, Western Michigan, Ohio, Northern Illinois, Central Michigan, Akron, Miami (OH).

Kentucky (SU: 2-0, ATS: 2-0, O/U: 2-0)

Table with columns: Date, Opponent, Line Score, ATS/O/U. Rows include UL-Monroe, Missouri, Chattanooga, South Carolina, Florida, LSU, Georgia, Mississippi State, Tennessee, Vanderbilt, New Mexico State, Louisville.

Liberty (SU: 2-0, ATS: 2-0, O/U: 0-2)

Table with columns: Date, Opponent, Line Score, ATS/O/U. Rows include Campbell, Troy, Old Dominion, Syracuse, UAB, Middle Tennessee, UL-Monroe, North Texas, Massachusetts, Ole Miss, UL-Lafayette, Army.

Louisiana Tech (SU: 1-1, ATS: 1-1, O/U: 2-0)

Table with columns: Date, Opponent, Line Score, ATS/O/U. Rows include Mississippi St, SE Louisiana, SMU, North Texas, NC State, UTEP, UTSA, Old Dominion, UAB, Charlotte, Southern Miss, Rice.

Louisville (SU: 1-1, ATS: 0-2, O/U: 0-2)

Table with columns: Date, Opponent, Line Score, ATS/O/U. Rows include Ole Miss, East Kentucky, UCF, Florida State, Wake Forest, Virginia, Boston College, NC State, Clemson, Syracuse, Duke, Kentucky.

LSU (SU: 1-1, ATS: 0-2, O/U: 1-1)

Table with columns: Date, Opponent, Line Score, ATS/O/U. Rows include UCLA, McNeese State, Central Michigan, Mississippi State, Auburn, Kentucky, Florida, Ole Miss, Alabama, Arkansas, UL-Monroe, Texas A&M.

Marshall (SU: 2-0, ATS: 1-1, O/U: 2-0)

Table with columns: Date, Opponent, Line Score, ATS/O/U. Rows include Navy, NC Central, East Carolina, Appalachian State, Middle Tennessee, Old Dominion, North Texas, FIU, Florida Atlantic, UAB, Charlotte, Western Kentucky.

Maryland (SU: 2-0, ATS: 2-0, O/U: 1-1)

Table with columns: Date, Opponent, Line Score, ATS/O/U. Rows include West Virginia, Howard, Illinois, Kent State, Iowa, Ohio State, Minnesota, Indiana, Penn State, Michigan State, Michigan, Rutgers.

Massachusetts (SU: 0-2, ATS: 1-1, O/U: 2-0)

Table with columns: Date, Opponent, Line Score, ATS/O/U. Rows include Pittsburgh, Boston College, Eastern Michigan, Coastal Carolina, Toledo, Connecticut, Florida State, Liberty, Rhode Island, Maine, Army, New Mexico State.

Memphis (SU: 2-0, ATS: 1-1, O/U: 1-1)

Table with columns: Date, Opponent, Line Score, ATS/O/U. Rows include Nicholls State, Arkansas State, Mississippi State, UTSA, Temple, Tulsa, Navy, UCF, SMU, East Carolina, Houston, Tulane.

Miami (FL) (SU: 1-1, ATS: 0-2, O/U: 0-2)

Table with columns: Date, Opponent, Line Score, ATS/O/U. Rows include Alabama, Appalachian St, Central Connecticut, Virginia, North Carolina, NC State, Pittsburgh, Georgia Tech, Florida State, Virginia Tech, Duke.

Miami (OH) (SU: 0-2, ATS: 1-1, O/U: 2-0)

Table with columns: Date, Opponent, Line Score, ATS/O/U. Rows include Cincinnati, Minnesota, LIU, Army, Central Michigan, Eastern Michigan, Akron, Ball State, Ohio, Buffalo, Bowling Green, Kent State.

Michigan (SU: 2-0, ATS: 2-0, O/U: 0-2)

Table with columns: Date, Opponent, Line Score, ATS/O/U. Rows include Western Mich, Washington, Northern Illinois, Rutgers, Wisconsin, Nebraska, Northwestern, Michigan State, Indiana, Penn State, Maryland, Ohio State, Penn State.

Michigan State (SU: 2-0, ATS: 1-0, O/U: 2-0)

Table with columns: Date, Opponent, Line Score, ATS/O/U. Rows include Northwestern, Washington, Youngstown St, Miami (FL), Nebraska, Western Kentucky, Rutgers, Indiana, Michigan, Purdue, Maryland, Ohio State, Penn State.

Middle Tennessee (SU: 1-1, ATS: 1-1, O/U: 1-1)

Table with columns: Date, Opponent, Line Score, ATS/O/U. Rows include Monmouth, Arkansas Tech, UTSJ, Charlotte, Marshall, Liberty, Connecticut, Southern Miss, Western Kentucky, FIU, Old Dominion, Florida Atlantic.

Minnesota (SU: 1-1, ATS: 0-1, O/U: 2-0)

Table with columns: Date, Opponent, Line Score, ATS/O/U. Rows include Ohio State, Miami (OH), Colorado, Bowling Green, Purdue, Nebraska, Maryland, Northwestern, Illinois, Iowa, Indiana, Wisconsin.

Mississippi State (SU: 2-0, ATS: 1-1, O/U: 1-1)

Table with columns: Date, Opponent, Line Score, ATS/O/U. Rows include Louisiana Tech, NC State, Memphis, LSU, Texas A&M, Alabama, Vanderbilt, Kentucky, Arkansas, Auburn, Tennessee State, Ole Miss.

Missouri (SU: 1-1, ATS: 0-2, O/U: 1-1)

Table with columns: Date, Opponent, Line Score, ATS/O/U. Rows include Central Mich, Kentucky, SE Missouri State, Boston College, Tennessee, North Texas, Texas A&M, Vanderbilt, Georgia, South Carolina, Florida, Arkansas.

Navy (SU: 0-2, ATS: 0-2, O/U: 1-1)

Table with columns: Date, Opponent, Line Score, ATS/O/U. Rows include Marshall, Air Force, Houston, UCF, SMU, Memphis, Cincinnati, Tulsa, Notre Dame, East Carolina, Temple, Army.

NC State (SU: 1-1, ATS: 1-1, O/U: 0-2)

Table with columns: Date, Opponent, Line Score, ATS/O/U. Rows include UCF, Mississippi St, Furman, Clemson, Louisiana Tech, Boston College, Miami (FL), Louisville, Florida State, Wake Forest, Syracuse, North Carolina.

Nebraska (SU: 2-1, O/U: 1-2)

Table with columns: Date, Opponent, Line Score, ATS/O/U. Rows include Illinois, Fordham, Oklahoma, Michigan State, Northwestern, Michigan, Minnesota, Purdue, Ohio State, Wisconsin, Iowa.

Nevada (SU: 2-0, ATS: 2-0, O/U: 1-1)

Table with columns: Date, Opponent, Line Score, ATS/O/U. Rows include California, Idaho State, Kansas State, Boise State, New Mexico State, Hawaii, Fresno State, UNLV, San Jose State, San Diego State, Air Force, Colorado State.

New Mexico State (SU: 2-0, ATS: 0-2, O/U: 1-1)

Table with columns: Date, Opponent, Line Score, ATS/O/U. Rows include Houston Baptist, New Mexico St, Texas A&M, UTEP, Air Force, Colorado State, Wyoming, UNLV, Fresno State, Boise State, Utah State, Alabama, Kentucky, Massachusetts.

North Carolina (SU: 1-1, ATS: 1-1, O/U: 1-1)

Table with columns: Date, Opponent, Line Score, ATS/O/U. Rows include Virginia Tech, Georgia State, Virginia, Georgia Tech, Duke, Florida State, Miami (FL), Utah State, Alabama, Kentucky, Massachusetts.

North Carolina State (SU: 1-1, ATS: 1-1, O/U: 1-1)

Table with columns: Date, Opponent, Line Score, ATS/O/U. Rows include Virginia Tech, Georgia State, Virginia, Georgia Tech, Duke, Florida State, Miami (FL), Notre Dame, Wake Forest, Pittsburgh, Wofford, NC State.

North Texas (SU: 1-1, ATS: 1-1, O/U: 0-2)

Table with columns: Date, Opponent, Line Score, ATS/O/U. Rows include Northwestern St, SMU, UAB, Louisiana Tech, Missouri, Marshall, Liberty, Rice, Southern Miss, UTEP, FIU, UTSA.

Northern Illinois (SU: 1-1, ATS: 1-0-1, O/U: 1-1)

Table with columns: Date, Opponent, Line Score, ATS/O/U. Rows include Georgia Tech, Wyoming, Michigan, Maine, Eastern Michigan, Toledo, Bowling Green, Central Michigan, Kent State, Ball State, Buffalo, Western Michigan.

Northwestern (SU: 1-1, ATS: 0-2, O/U: 1-1)

Table with columns: Date, Opponent, Line Score, ATS/O/U. Rows include Michigan State, Indiana State, Duke, Nebraska, Rutgers, Michigan, Minnesota, Iowa, Wisconsin, Purdue, Illinois.

Notre Dame (SU: 2-0, ATS: 0-2, O/U: 0-2)

Table with columns: Date, Opponent, Line Score, ATS/O/U. Rows include Florida St-ot, Toledo, Duquesne, Wisconsin, Cincinnati, Virginia Tech, USC, North Carolina, Navy, Virginia, Georgia Tech, Stanford.

Ohio (SU: 0-2, ATS: 0-2, O/U: 1-1)

Table with columns: Date, Opponent, Line Score, ATS/O/U. Rows include Syracuse, Duquesne, UL-Lafayette, Northwestern, Akron, Central Michigan, Buffalo, Kent State, Miami (OH), Eastern Michigan, Toledo, Bowling Green.

Ohio State (SU: 1-1, ATS: 0-1, O/U: 1-1)

Table with columns: Date, Opponent, Line Score, ATS/O/U. Rows include Minnesota, Oregon, Tulsa, Akron, Rutgers, Maryland, Indiana, Penn State, Nebraska, Purdue, Michigan State, Michigan.

Oklahoma (SU: 2-0, ATS: 1-1, O/U: 2-0)

Table with columns: Date, Opponent, Line Score, ATS/O/U. Rows include Tulane, Western Carolina, Nebraska, West Virginia, Kansas State, Texas, TCU, Kansas, Texas Tech, Baylor, Iowa State, Oklahoma State.

Oklahoma State (SU: 2-0, ATS: 0-2, O/U: 1-1)

Table with columns: Date, Opponent, Line Score, ATS/O/U. Rows include Missouri State, Tulsa, Boise State, Kansas State, Baylor, Texas, Iowa State, Kansas, West Virginia, TCU, Texas Tech, Oklahoma.

Old Dominion (SU: 1-1, ATS: 2-0, O/U: 0-2)

Table with columns: Date, Opponent, Line Score, ATS/O/U. Rows include Wake Forest, Hampton, Liberty, Buffalo, UTEP, Marshall, Western Kentucky, Louisiana Tech, FIU, Florida Atlantic, Middle Tennessee, Charlotte.

Ole Miss (SU: 2-0, ATS: 2-0, O/U: 1-1)

Table with columns: Date, Opponent, Line Score, ATS/O/U. Rows include Louisville, Austin Peay, Tulane, Alabama, Arkansas, Tennessee, LSU, Auburn, Liberty, Texas A&M, Vanderbilt, Mississippi State.

Oregon (SU: 2-0, ATS: 1-1, O/U: 0-2)

Table with columns: Date, Opponent, Line Score, ATS/O/U. Rows include Fresno State, Ohio State, Stony Brook, Arizona, Stanford, California, UCLA, Colorado, Washington, Washington State, Oregon State.

Oregon State (SU: 1-1, ATS: 1-1, O/U: 1-1)

Table with columns: Date, Opponent, Line Score, ATS/O/U. Rows include Purdue, Hawaii, Idaho, USC, Washington, Utah, California, Colorado, Stanford, Arizona State, Oregon.

Penn State (SU: 2-0, ATS: 2-0, O/U: 0-2)

Table with columns: Date, Opponent, Line Score, ATS/O/U. Rows include Wisconsin, Ball State, Auburn, Villanova, Indiana, Iowa, Illinois, Ohio State, Maryland, Michigan, Rutgers, Michigan State.

Pittsburgh (SU: 2-0, ATS: 2-0, O/U: 0-2)

Table with columns: Date, Opponent, Line Score, ATS/O/U. Rows include Massachusetts, Tennessee, Western Michigan, New Hampshire, Georgia Tech, Virginia Tech, Clemson, Miami (FL), North Carolina, Virginia, Syracuse.

Purdue (SU: 2-0, ATS: 2-0, O/U: 0-2)

Table with columns: Date, Opponent, Line Score, ATS/O/U. Rows include Oregon State, Connecticut, Notre Dame, Illinois, Minnesota, Iowa, Wisconsin, Nebraska, Michigan State, Ohio State, Northwestern, Indiana.

Rice (SU: 0-2, ATS: 0-2, O/U: 2-0)

Table with columns: Date, Opponent, Line Score, ATS/O/U. Rows include Arkansas, Houston, Texas, Texas Southern, UTSA, UAB, North Texas, Charlotte, Western Kentucky, UTEP, Louisiana Tech.

Rutgers (SU: 2-0, ATS: 2-0, O/U: 1-1)

Table with columns: Date, Opponent, Line Score, ATS/O/U. Rows include Temple, Syracuse, Delaware, Michigan, Ohio State, Michigan State, Northwestern, Illinois, Wisconsin, Indiana, Penn State, Maryland.

San Diego State (SU: 2-0, ATS: 1-1, O/U: 1-1)

Table with columns: Date, Opponent, Line Score, ATS/O/U. Rows include New Mexico St, Arizona, Utah, Towson, New Mexico, San Jose State, Air Force, Fresno State, Hawaii, Nevada, UNLV, Boise State.

San Jose State (SU: 1-1, ATS: 1-1, O/U: 1-1)

Date	Opponent	Line	Score	ATS	O/U
8/28	Southern Utah	-28	45-14	W	o57
9/4	at USC	+14	7-30	L	u61
9/11	at Hawaii				
9/18	at Western Michigan				
9/25	New Mexico State				
10/2	at Colorado State				
10/9	San Diego State				
10/15	at UNLV				
10/23	Wyoming				
11/6	at Nevada				
11/13	Utah State				
11/20					
11/25	Fresno State				

SMU (SU: 2-0, ATS: 2-0, O/U: 0-2)

Date	Opponent	Line	Score	ATS	O/U
9/4	Ablene Christian	-33	56-9	W	u65
9/11	North Texas	-22	35-12	W	u76
9/18	at Louisiana Tech				
9/25	at TCU				
10/2	USF				
10/9	at Navy				
10/16					
10/23	Tulane				
10/30	at Houston				
11/6	at Memphis				
11/13	UCF				
11/20	at Cincinnati				
11/27	Tulsa				

South Alabama (SU: 2-0, ATS: 1-1, O/U: 0-2)

Date	Opponent	Line	Score	ATS	O/U
9/4	Southern Miss	-2	31-7	W	u56
9/11	at Bowling Green	-14	22-19	L	u48
9/18	Alcorn State				
9/25	UL-Lafayette				
10/2	at Texas State				
10/14	Georgia Southern				
10/23	at UL-Monroe				
10/30	Arkansas State				
11/6	at Troy				
11/13	at Appalachian State				
11/20	at Tennessee				
11/26	Coastal Carolina				

South Carolina (SU: 2-0, ATS: 2-0, O/U: 0-2)

Date	Opponent	Line	Score	ATS	O/U
9/4	Eastern Illinois	-31	46-0	W	u55
9/11	at East Carolina	-2	20-17	W	u56
9/18	at Georgia				
9/25	Kentucky				
10/2	Troy				
10/9	at Tennessee				
10/16	Vanderbilt				
10/23	at Texas A&M				
10/30					
11/6	Florida				
11/13	at Missouri				
11/20	Auburn				
11/27	Clemson				

Southern Miss (SU: 1-1, ATS: 1-1, O/U: 0-2)

Date	Opponent	Line	Score	ATS	O/U
9/4	at South Alabama	-2	7-31	L	u56
9/11	Grambling State	-23	37-0	W	u47
9/18	Troy				
9/25	at Alabama				
10/2	at Rice				
10/9	UTEP				
10/16	UAB				
10/23					
10/30	at Middle Tennessee				
11/6	North Texas				
11/13	at UTSA				
11/19	at Louisiana Tech				
11/27	FIU				

Stanford (SU: 1-1, ATS: 1-1, O/U: 1-1)

Date	Opponent	Line	Score	ATS	O/U
9/4	at Kansas State	+3	7-24	L	u54
9/11	at USC	+17	42-28	W	o53
9/18	at Vanderbilt				
9/25	UCLA				
10/2	Oregon				
10/8	at Arizona State				
10/16	at Washington State				
10/23					
10/30	Washington				
11/5	Utah				
11/13	at Oregon State				
11/20	California				
11/27	Notre Dame				

Syracuse (SU: 1-1, ATS: 1-1, O/U: 0-2)

Date	Opponent	Line	Score	ATS	O/U
9/4	at Ohio	+2	29-9	W	u55
9/11	Rutgers	+2	7-17	L	u50
9/18	Albany				
9/24	Liberty				
10/2	at Florida State				
10/9	Wake Forest				
10/15	Clemson				
10/23	at Virginia Tech				
10/30	Boston College				
11/6					
11/13	at Louisville				
11/20	at NC State				
11/27	Pittsburgh				

TCU (SU: 2-0, ATS: 0-1-1, O/U: 1-1)

Date	Opponent	Line	Score	ATS	O/U
9/4	Duquesne	-42	45-3	P	u54
9/11	California	-11	34-32	L	o46
9/18					
9/25	SMU				
10/2	Texas				
10/9	at Texas Tech				
10/16	at Oklahoma				
10/23	West Virginia				
10/30	at Kansas State				
11/6	Baylor				
11/13	at Oklahoma State				
11/20	Kansas				
11/26	at Iowa State				

Temple (SU: 1-1, ATS: 1-1, O/U: 0-2)

Date	Opponent	Line	Score	ATS	O/U
9/2	at Rutgers	+14	14-61	L	o52
9/11	at Akron	-6	45-24	W	o52
9/18	Boston College				
9/25	Wagner				
10/2	Memphis				
10/8	at Cincinnati				
10/16					
10/23	at USF				
10/30	UCF				
11/4	at East Carolina				
11/13	Houston				
11/20	at Tulsa				
11/27	Navy				

Tennessee (SU: 1-1, ATS: 0-2, O/U: 1-1)

Date	Opponent	Line	Score	ATS	O/U
9/2	Bowling Green	-37	38-6	L	u56
9/11	Pittsburgh	+3	34-41	L	o60
9/18	Tennessee Tech				
9/25	at Florida				
10/2	at Missouri				
10/9	South Carolina				
10/16	Ole Miss				
10/23	at Alabama				
10/30					
11/6	at Kentucky				
11/13	Georgia				
11/20	South Alabama				
11/27	Vanderbilt				

Texas (SU: 1-1, ATS: 1-1, O/U: 1-1)

Date	Opponent	Line	Score	ATS	O/U
9/4	UL-Lafayette	-8	38-18	W	u58
9/11	at Arkansas	-6	21-40	L	o57
9/18	Rice				
9/25	Texas Tech				
10/2	at TCU				
10/9	at Oklahoma				
10/16	Oklahoma State				
10/23					
10/30	at Baylor				
11/6	at Iowa State				
11/13	Kansas				
11/20	at West Virginia				
11/26	Kansas State				

Texas A&M (SU: 2-0, ATS: 1-1, O/U: 0-2)

Date	Opponent	Line	Score	ATS	O/U
9/4	Kent State	-29	41-10	W	u66
9/11	at Colorado	-17	10-7	L	u50
9/18	New Mexico				
9/25	at Arkansas				
10/2	Mississippi State				
10/9	Alabama				
10/16	at Missouri				
10/23	South Carolina				
10/30					
11/6	Auburn				
11/13	at Ole Miss				
11/20	Prairie View A&M				
11/27	at LSU				

Texas State (SU: 1-1, ATS: 1-0, O/U: 0-1)

Date	Opponent	Line	Score	ATS	O/U
9/4	Baylor	+13	20-29	W	u52
9/11	at FIU	-2	23-17	W	u55
9/18	Incarate Word				
9/25	at Eastern Michigan				
10/2					
10/9	South Alabama				
10/16	Troy				
10/23	at Georgia State				
10/30	at UL-Lafayette				
11/6	UL-Monroe				
11/13	Georgia Southern				
11/20	at Coastal Carolina				
11/27	at Arkansas State				

Texas Tech (SU: 1-1, ATS: 1-1, O/U: 0-2)

Date	Opponent	Line	Score	ATS	O/U
9/4	at Houston	+2	38-21	W	u63
9/11	Stephen F. Austin	-31	28-22	L	u51
9/18	FIU				
9/25	at Texas				
10/2	at West Virginia				
10/9	TCU				
10/16	at Kansas				
10/23	Kansas State				
10/30	at Oklahoma				
11/6					
11/13	Iowa State				
11/20	Oklahoma State				
11/27	at Baylor				

Toledo (SU: 1-1, ATS: 1-1, O/U: 2-0)

Date	Opponent	Line	Score	ATS	O/U
9/4	Norfolk State	-39	49-10	L	o55
9/11	at Notre Dame	+16	29-32	W	o56
9/18	Colorado State				
9/25	at Ball State				
10/2	at Massachusetts				
10/9	Northern Illinois				
10/16	at Central Michigan				
10/23	Western Michigan				
10/30					
11/2	Eastern Michigan				
11/10	at Bowling Green				
11/16	at Ohio				
11/27	Akron				

Troy (SU: 1-1, ATS: 1-1, O/U: 1-1)

Date	Opponent	Line	Score	ATS	O/U
9/4	Southern	-25	55-3	W	o55
9/11	Liberty	+3	13-21	L	u62
9/18	at Southern Miss				
9/25	at UL-Monroe				
10/2	at South Carolina				
10/9	Georgia Southern				
10/16	at Texas State				
10/23					
10/28	at Coastal Carolina				
11/6	South Alabama				
11/13	UL-Lafayette				
11/20	Appalach				

Powers' Picks Star-Rated Plays in CFB/NFL

522-427-19 (55%) All-Time 2015-2020!!!

2015-16 Season: 98-70-1 (58%)

Week 1 College:

4* BYU/NEBRASKA UNDER 65.5 W \$400
 3* KENTUCKY (-15.5) over UL-Lafayette L (\$330)
 3* Oklahoma State (-22.5) over C MICHIGAN L (\$330)
 2* Purdue/MARSHALL UNDER 64 L (\$220)
 2* NC STATE/Troy OVER 58 W \$200

Week 2 College:

3* ARKANSAS (-21.5) over Toledo L (\$330)
 3* MICHIGAN STATE (-4) over Oregon L (\$330)
 2* GA SOUTHERN (+4.5) over W Michigan W \$200
 2* Iowa/IOWA STATE UNDER 50.5 W \$200
 2* East Carolina/FLORIDA OVER 52.5 W \$200

Week 1 NFL:

3* Buffalo (+2.5) over INDIANAPOLIS W \$300
 2* Miami/WASHINGTON UNDER 43 W \$200
 2* ST LOUIS (+4) over Seattle W \$200

Week 3 College:

4* Georgia Tech/NOTRE DAME OVER 54 L (\$440)
 3* South Carolina (+17) over GEORGIA L (\$330)
 3* Air Force (+26.5) over MICHIGAN ST W \$300
 2* South Florida/MARYLAND OVER 51 W \$200
 2* Stanford (+10) over USC W \$200

Week 2 NFL:

3* Miami/JACKSONVILLE UNDER 41.5 L (\$330)
 2* PITTSBURGH (-6) over San Francisco W \$200
 2* WASHINGTON (+3) over St. Louis W \$200

Week 4 College:

3* OREGON (-12.5) over Utah L (\$330)
 3* Ball State (+18.5) over NORTHWESTERN W \$300
 2* NC STATE (-17) over SOUTH ALABAMA W \$200
 2* Teu (-7) over TEXAS TECH L (\$220)
 2* UNDER 52.5 Marshall/KENT STATE L (\$220)

Week 3 NFL:

3* ARIZONA (-6.5) over San Francisco W \$300
 2* NY GIANTS (-3.5) over Washington W \$200
 2* Denver (-3) over DETROIT W \$200

Week 5 College:

3* NC STATE (-4.5) over Louisville L (\$330)
 3* Alabama (+2.5) over GEORGIA W \$300
 2* Nebraska (-6.5) over ILLINOIS L (\$220)
 2* Washington St (+19) over CALIFORNIA W \$200
 2* UNDER 60 Mississippi SU/TEXAS A&M W \$200

Week 4 NFL:

3* NY Giants (+6) over BUFFALO W \$300
 2* DENVER (-6.5) over Minnesota L (\$220)
 2* St. Louis/ARIZONA OVER 42.5 W \$200

Week 6 College:

3* Wyoming (+24) over AIR FORCE W \$300
 3* Northwestern (+8) over MICHIGAN L (\$330)
 2* Oklahoma State (+7) over W VIRGINIA W \$200
 2* Miami, FL (+9.5) over FLORIDA STATE W \$200
 2* Colorado/ARIZONA STATE OVER 55.5 W \$200

Week 5 NFL:

3* TENNESSEE (+2.5) over Buffalo W \$300
 2* Cleveland (+6.5) over BALTIMORE W \$200
 2* Chicago/KANSAS CITY OVER 44.5 L (\$220)

Week 7 College:

3* Louisville (+7) over FLORIDA STATE L (\$330)
 3* San Diego State (+3) over SAN JOSE ST W \$300
 2* Michigan State (+8) over MICHIGAN W \$200
 2* BAYLOR (-21) over West Virginia W \$200
 2* OVER 54.5 Fiu/MIDDLE TENNESSEE W \$200

Week 6 NFL:

3* Miami (+2.5) over TENNESSEE W \$300
 2* Washington (+6) over NY JETS L (\$220)
 2* UNDER 41 Carolina/SEATTLE L (\$220)

Week 8 College:

3* Tennessee (+15) over ALABAMA W \$300
 3* SAN DIEGO STATE (+5) over Utah State W \$300
 2* NORTH CAROLINA (-17) over Virginia L (\$220)
 2* UNDER 57 Florida Atlantic/UTEP W \$200
 2* OVER 52 Old Dominion/FIU W \$200

Week 7 NFL:

3* NY Jets (+9) over NEW ENGLAND W \$300
 2* Tampa Bay (+3.5) over WASHINGTON W \$200
 2* Dallas (+3.5) over NY GIANTS L (\$220)

Week 9 College:

3* RICE (+13) over Louisiana Tech L (\$330)
 3* Georgia (+3) over Florida L (\$330)
 2* Notre Dame (-10) over TEMPLE L (\$220)
 2* VIRGINIA (+6) over Georgia Tech W \$200
 2* UNDER 50 Rutgers/WISCONSIN L (\$220)

Week 8 NFL:

3* DENVER (+3) over Green Bay W \$300
 2* Tampa Bay (+7.5) over ATLANTA W \$200
 2* CHICAGO (+1) over Minnesota L (\$220)

Week 10 College:

3* Florida State (+12) over CLEMSON W \$300
 3* OKLAHOMA STATE (+5) over Teu W \$300
 2* NEW MEXICO (+14.5) over Utah State W \$200
 2* Lsu (+6.5) over ALABAMA L (\$220)
 2* OVER 56.5 BYU/SAN JOSE STATE L (\$220)

Week 9 NFL:

3* Philadelphia (-2.5) over DALLAS W \$300
 2* PITTSBURGH (-4.5) over Oakland L (\$220)
 2* NY Giants (-2.5) over TAMPA BAY W \$200

Week 11 College:

3* INDIANA (+13.5) over Michigan W \$300
 3* New Mexico (+30.5) over BOISE STATE W \$300
 2* Washington State (+10) over UCLA W \$200
 2* SOUTH CAROLINA (+8) over Florida L (\$220)
 2* OVER 56.5 Georgia Southern/TROY W \$200

Week 10 NFL:

3* Dallas (+1.5) over TAMPA BAY L (\$330)
 2* Arizona (+3) over SEATTLE W \$200
 3* OVER 48 Detroit/GREEN BAY L (\$220)

Week 12 College:

3* MISSOURI (+8.5) over Tennessee L (\$330)
 3* PENN STATE (+4) over Michigan L (\$330)
 2* OREGON (-4) over USC W \$200
 2* ARKANSAS (-3.5) over Mississippi State L (\$220)
 2* Nevada (+14) over UTAH STATE W \$200

Week 11 NFL:

3* Indianapolis (+6) over ATLANTA W \$300
 2* CHICAGO (-1) over Denver L (\$220)
 2* Tampa Bay (+5.5) over PHILADELPHIA W \$200

Week 13 College:

3* STANFORD (-4) over Notre Dame L (\$330)
 3* Colorado/UTAH UNDER 49 W \$300
 2* SYRACUSE (+3) over Boston College W \$200
 2* Iowa State (+14) over WEST VIRGINIA L (\$220)
 2* NEW MEXICO (+10) over Air Force W \$200

Week 12 NFL:

3* Pittsburgh (+4) over SEATTLE L (\$330)
 2* NY Giants (-2.5) over WASHINGTON L (\$220)
 2* TENNESSEE (+2) over Oakland L (\$220)

Week 14 College:

2* KANSAS ST (+6.5) over West Virginia W \$200
 1* So Miss (+7.5) over W KENTUCKY L (\$110)
 1* Georgia State (+21) over GA SOUTHERN W \$100

Week 13 NFL:

2* MINNESOTA (Pick) over Seattle L (\$220)
 2* NY GIANTS (+2.5) over NY Jets L (\$220)
 1* OAKLAND (+3) over Kansas City L (\$110)

Week 14 NFL:

3* New England (-3) over HOUSTON W \$300
 2* CHICAGO (-3) over Washington L (\$220)
 2* Tennessee/NY JETS OVER 43 L (\$220)

Week 15 NFL:

3* Green Bay (-3) over OAKLAND W \$300
 2* WASHINGTON (+1) over Buffalo W \$200
 2* NEW ORLEANS (-3) over Detroit L (\$220)

Week 16 NFL:

3* DENVER (-3.5) over Cincinnati W (\$330)
 2* Dallas/BUFFALO UNDER 43 L (\$220)
 1* ATLANTA (+7) over Carolina W \$100

Week 17 NFL:

2* Oakland (+7) over KANSAS CITY W \$200
 2* HOUSTON (-6) over Jacksonville W \$200
 1* BUFFALO (+3) over NY Jets W \$100

Bowls and College Football Playoffs:

1* NEW MEXICO (+9) over Arizona W \$100
 3* BYU/Utah UNDER 54 L (\$330)
 1* Ohio/Appalachian State OVER 54 W \$100
 1* Georgia State (+3) over San Jose State L (\$110)
 1* Arkansas State/Louisiana Tech OVER 67 W \$100
 2* South Florida (+2.5) over W Kentucky L (\$220)
 1* Akron/Utah State UNDER 48.5 W \$100
 3* Temple (-1.5) over Toledo L (\$330)
 2* Boise State (-8.5) over Northern Illinois W \$200
 2* Georgia Southern/Bowling Green OVER 66 W \$200
 1* Western Michigan (-3) over Middle Tenn W \$100
 2* San Diego State (+1.5) over Cincinnati W \$200
 1* Connecticut/Marshall UNDER 44 W \$100
 1* Miami, FL/Washington State OVER 62 L (\$110)
 1* Southern Miss/Washington OVER 55 W \$100
 1* Duke (+2) over Indiana W \$100
 1* Tulsa (+14) over Virginia Tech W \$100
 1* Nebraska (+6.5) over UCLA W \$100
 1* Pittsburgh/NAVY OVER 53 W \$100
 1* Central Michigan (+6) over Minnesota L (\$110)
 2* Air Force (+7) over California L (\$220)
 No Play: Baylor/North Carolina N/A \$0
 1* Nevada (+3) over Colorado State W \$100
 1* Lsu (-7) over Texas Tech W \$100
 No Play: Memphis/Auburn (Dec. 30) N/A \$0
 3* Mississippi St (-5.5) over NC State W \$300
 1* Texas A&M (+4.5) over Louisville L (\$110)
 1* Wisconsin/USC OVER 50.5 W \$100
 1* Houston/Florida State OVER 55 W \$100
 2* Michigan State (+10) over Alabama L (\$220)
 2* Clemson (+3.5) over Oklahoma W \$100
 1* Northwestern (+8.5) over Tennessee L (\$110)
 1* Florida (+4.5) over Michigan L (\$110)
 1* Notre Dame/Ohio State OVER 56.5 W \$100
 1* Iowa (+6) over Stanford L (\$110)
 1* Ole Miss (-7) over Oklahoma State W \$100
 3* Penn State (+6.5) over Georgia L (\$330)
 1* Kansas State (+13) over Arkansas L (\$110)
 2* Teu (pick) over Oregon W \$200
 2* Arizona State (+1) over West Virginia P \$0
 1* Alabama/Clemson UNDER 51 L (\$110)

NFL Playoffs:

1* HOUSTON (+3.5) over Kansas City L (\$110)
 1* CINCINNATI (+3) over Pittsburgh W \$100
 1* Seattle (-5) over MINNESOTA L (\$110)
 2* Green Bay (-1) over WASHINGTON W \$200
 2* NEW ENGLAND (-5) over Kansas City W \$200
 1* ARIZONA (-7) over Green Bay L (\$110)
 1* Seattle (+3) over CAROLINA L (\$110)
 1* Pittsburgh/DENVER UNDER 40 W \$100
 1* DENVER (+3) over New England W \$100
 1* Arizona/CAROLINA OVER 48 W \$100
 1* Denver (+6) over Carolina W \$100

2016-17 Season: 91-74-3 (55%)

Week 1 College:

3* TULSA (-5) over San Jose St W \$300
 3* UL-LAFAYETTE (+20) over Boise St L (\$330)
 2* Oregon St (+13) over MINNESOTA W \$200
 2* Alabama (-11) over USC W \$200
 2* TEXAS (+3.5) over Notre Dame W \$200

Week 2 College:

3* Tulsa (+29) over OHIO ST L (\$330)
 3* Rice (+9.5) over ARMY L (\$330)
 2* NC State (-5) over EAST CAROLINA L (\$220)
 2* MIAMI, FL (-24) over Florida Atlantic W \$200
 2* Wyoming (+24.5) over NEBRASKA L (\$220)

Week 1 NFL:

2* San Diego (+6.5) over KANSAS CITY W \$200
 2* New England (+6) over ARIZONA W \$200
 1* Chicago/HOUSTON UNDER 44 W \$100

Week 3 College:

3* Michigan St (+8) over NOTRE DAME W \$300
 3* Texas St (+31.5) over ARKANSAS L (\$330)
 2* Virginia (+4.5) over CONNECTICUT W \$200
 2* NO ILLINOIS (+10.5) over San Diego St L (\$220)
 2* Hawaii/ARIZONA OVER 62.5 W \$200

Week 2 NFL:

3* NEW ENGLAND (-6.5) over Miami W \$300
 2* New Orleans (+4.5) over NY GIANTS W \$200
 2* Philadelphia/CHICAGO UNDER 43 P \$0

Week 4 College:

3* Florida St (-6) over SOUTH FLORIDA W \$300
 3* Miami, Oh (+18) over CINCINNATI W \$300
 2* Arkansas (+6) over Texas A&M L (\$220)
 2* MINNESOTA (-16) over Colorado St L (\$220)
 2* OLE MISS (-7) over Georgia W \$200

Week 3 NFL:

3* JACKSONVILLE (+1) over Baltimore L (\$330)
 2* TAMPA BAY (-5) over Los Angeles L (\$220)
 2* Pittsburgh (-3.5) over PHILADELPHIA L (\$220)

Week 5 College:

3* BYU (-3.5) over Toledo L (\$330)
 3* OLE MISS (-14.5) over Memphis W \$300
 2* Kansas St (+3.5) over WEST VIRGINIA W \$200
 2* Virginia (+3.5) over DUKE W \$200
 2* Miami, FL (-7) over GEORGIA TECH W \$200

Week 4 NFL:

3* NY JETS (+3) over Seattle L (\$330)
 2* Carolina (-3) over ATLANTA L (\$220)
 2* Dallas/SAN FRANCISCO UNDER 46 W \$200

Week 6 College:

3* KANSAS ST (-7.5) over Texas Tech L (\$330)
 3* SAN DIEGO ST (-14.5) over Unlv W \$300
 2* DUKE (-4.5) over Army W \$200
 2* Vanderbilt/KENTUCKY UNDER 51.5 W \$200
 2* ARKANSAS (+14) over Alabama L (\$220)

Week 5 NFL:

3* San Diego (+3.5) over OAKLAND W \$300
 3* Cleveland (+4.5) over INDIANAPOLIS L (\$220)
 2* Cincinnati (+1) over DALLAS L (\$220)

Week 7 College:

3* CLEMSON (-17.5) over NC State L (\$330)
 3* VIRGINIA (+3) over Pittsburgh L (\$330)
 2* TULANE (+11.5) over Memphis W \$200
 2* North Carolina (+8.5) over MIAMI, FL W \$200
 2* Kansas St (+11) over OKLAHOMA L (\$220)

Week 6 NFL:

4* Kansas City (+1) over OAKLAND W \$400
 2* OVER 44.5 Philadelphia/WASHINGTON W \$200
 2* HOUSTON (-3) over Indianapolis P \$0

Week 8 College:

4* MISSOURI (-6.5) over Middle Tennessee L (\$440)
 3* NAVY (+2.5) over Memphis W \$300
 2* Teu (+6.5) over WEST VIRGINIA L (\$220)
 2* FIU (+17) over Louisiana Tech L (\$220)
 2* OVER 54 Tulane/TULSA W \$200

Week 7 NFL:

3* San Diego (+6.5) over ATLANTA W \$300
 2* DENVER (-7.5) over Houston W \$200
 2* Cleveland/CINCINNATI OVER 45.5 W \$200

Week 9 College:

3* Georgia (+7.5) over Florida L (\$330)
 3* Cincinnati/TEMPLE OVER 53.5 L (\$330)
 2* WAKE FOREST (-6.5) over Army L (\$220)
 2* FLORIDA ST (+4.5) over Clemson W \$200
 2* Smu/TULANE OVER 51 W \$200

Week 8 NFL:

3* HOUSTON (-2.5) over Detroit W \$300
 2* New England (-6.5) over BUFFALO W \$200
 2* INDIANAPOLIS (+2.5/+3) over Kansas City L (\$220)

Week 10 College:

3* Syracuse (+27) over CLEMSON L (\$330)
 3* NORTH TEXAS (+20.5) over La Tech L (\$330)
 2* Arkansas St (-3.5) over GEORGIA ST W \$200
 2* KANSAS ST (-2.5) over Oklahoma St L (\$220)
 2* NORTHWESTERN (+7) over Wisconsin L (\$220)

Week 9 NFL:

4* Denver (PK) over OAKLAND L (\$440)
 3* Tennessee/SAN DIEGO OVER 47 W \$300
 2* MINNESOTA (-6.5) over Detroit L (\$220)

Week 11 College:

3* ARKANSAS (+7) over Lsu L (\$330)
 3* North Texas/W KENTUCKY OVER 65 L (\$330)
 2* NAVY (+1.5) over Tulsa W \$200
 2* OKLAHOMA (-15.5) over Baylor W \$200
 2* Vanderbilt (+3.5) over MISSOURI L (\$220)

Week 10 NFL:

3* PITTSBURGH (-2.5) over Dallas L (\$330)
 2* Chicago (+1.5) over TAMPA BAY L (\$220)
 2* Green Bay (-2.5) over TENNESSEE L (\$220)

Week 12 College:

3* Duke (+7.5/+8) over PITTSBURGH L (\$330)
 2* COLORADO ST (-4.5) over New Mexico W \$200
 2* Indiana (+24) over MICHIGAN W \$200
 2* VANDERBILT (+10) over Mississippi W \$200
 2* Kansas St (-2) over BAYLOR W \$200

Week 11 NFL:

3* New England/SAN FRANCISCO OVER 51 L (\$330)
 2* INDIANAPOLIS (-3) over Tennessee W \$200
 2* Miami (-1.5) over LOS ANGELES W \$200

Week 13 College:

3* BYU (-18) over Utah St P \$0
 3* FLORIDA ST (-7.5) over Florida W \$300
 2* NC State (+11) over NORTH CAROLINA W \$200
 2* OVER 67 Navy/SMU W \$200
 2* VANDERBILT (+7.5) over Tennessee W \$200

Week 12 NFL:

3* Carolina/OAKLAND OVER 49.5 W \$300
 2* Tennessee -5.5 over CHICAGO W \$200

Week 14 College:

2* Virginia Tech/Clemson OVER 58 W \$200
 1* Arkansas St (-23) over TEXAS ST L (\$110)

Week 13 NFL:

3* Denver (-5) over JACKSONVILLE W \$300
 2* OVER 49.5 Washington/ARIZONA W \$200
 2* ATLANTA (-3.5) over Kansas City L (\$220)

Week 14 NFL:

3* New Orleans (+3 -120) over TAMPA BAY L (\$330)
 2* Minnesota (-3.5) over JACKSONVILLE W \$200
 2* Arizona (+1) over MIAMI L (\$220)

Week 15 NFL:

3* BALTIMORE (-6) over Philadelphia L (\$330)
 2* Tennessee (+5.5) over KANSAS CITY W \$200
 2* HOUSTON (-6) over Jacksonville L (\$220)

Week 16 NFL:

3* GREEN BAY (-6.5) over Minnesota W \$300
 2* Indianapolis (+3.5) over OAKLAND L (\$220)
 2* HOUSTON (-1.5) over Cincinnati W \$200

Week 17 NFL:

2* NY Giants/WASHINGTON OVER 44.5 L (\$220)
 2* Chicago/MINNESOTA OVER 42 W \$200
 2* New Orleans (+7) over ATLANTA W \$200

Bowls and College Football Playoffs:

1* NEW MEXICO (-7) over Uta L (\$110)
 1* San Diego St (+3.5) over Houston W \$100
 1* Arkansas St/Central Florida UNDER 49.5 W \$100
 1* Appalachian St/Toledo OVER 58 W \$100
 2* Southern Miss/UL-Lafayette OVER 58 L (\$220)
 1* Central Michigan/Tulsa OVER 69 L (\$110)
 2* Memphis (+5) over Western Kentucky L (\$220)
 2* Wyoming (+9) over Byu W \$200
 1* Idaho (+13.5) over Colorado St W \$100
 2* Eastern Michigan/Old Dominion OVER 64 L (\$220)
 2* Louisiana Tech/NAVY OVER 66 W \$200
 2* Ohio (+4) over Troy L (\$220)
 No play: Middle Tenn at Hawaii N/A

3* Mississippi St (-13.5) over Miami, Oh L (\$330)
 2* Boston College (+1.5) over Maryland W \$200
 1* Vanderbilt (+4.5) over NC State L (\$110)
 1* North Texas (+10) over Army W \$100
 3* Wake Forest (+12) over Temple W \$300
 1* Minnesota (+10.5) over Washington St W \$100
 1* Baylor (+7.5) over Boise St W \$100
 2* Northwestern (+5.5) over Pittsburgh W \$200
 1* Miami, FL (-2.5) over West Virginia W \$200
 1* Utah (-7) over Indiana L (\$110)
 1* Texas A&M (-2) over Kansas St L (\$110)
 3* South Carolina (+10.5) over South Florida W \$300
 2* Arkansas (+7) over Virginia Tech L (\$220)
 2* Oklahoma St (+3) over Colorado W \$200
 1* Teu/Georgia UNDER 48.5 L (\$110)
 1* Stanford (-2.5) over North Carolina L (\$110)
 1* North Alabama (+14) over Air Force L (\$110)
 1* Nebraska/Tennessee OVER 58.5 W \$100
 4* Florida St (+7) over Michigan W \$400
 1* LSU (-3) over Louisville W \$100
 1* Kentucky (+3.5) over Georgia Tech L (\$110)
 1* Washington (+14) over Alabama L (\$110)
 2* Clemson (+3) over Ohio St W \$200
 1* Iowa (+3) over Florida L (\$110)
 1* Western Michigan/Wisconsin OVER 52.5 L (\$110)
 2* USC (-7) over Penn St L (\$220)
 1* Auburn (+3) over Oklahoma L (\$220)
 1* Clemson (+6.5) over Alabama W \$100

NFL Playoffs:

1* Oakland/HOUSTON UNDER 36.5 L (\$110)
 1* SEATTLE (-8) over Detroit W \$100
 2* PITTSBURGH (-10) over Miami W \$200
 1* GREEN BAY (-4.5) over NY Giants W \$100
 1* Seattle/ATLANTA OVER 51.5 W \$100
 1* Houston/NEW ENGLAND UNDER 44.5 L (\$110)
 2* PITTSBURGH (+1.5) over KANSAS CITY W \$200
 2* Green Bay/DALLAS OVER 52 W \$200
 1* ATLANTA (-4.5) over Green Bay W \$100
 1* NEW ENGLAND (-5.5) over Pittsburgh W \$100
 1* New England/Atlanta UNDER 59 L (\$110)

2017-18 Season: 85-80-5 (52%)

Week 0 College:	
1★ OVER 51 Rice/Stanford	W \$100
Week 1 College:	
3★ UCLA (-3.5) over Texas A&M	L (\$330)
2★ Miami, Oh (+2.5) over MARSHALL	L (\$220)
2★ Washington/RUTGERS OVER 52	L (\$220)
1★ Florida (+4) over Michigan	L (\$110)
1★ Vanderbilt (-3 -120) over Middle Tennessee	W \$200
Week 2 College:	
3★ RUTGERS (-5) over Eastern Michigan	L (\$330)
3★ Georgia (+4.5) over NOTRE DAME	W \$300
2★ DUKE (+3.5) over Northwestern	W \$200
2★ IOWA ST (+3 -120) over Iowa	P \$0
2H Nebraska/OREGON OVER 68	W \$200
Week 1 NFL:	
3★ HOUSTON -5 over Jacksonville	L (\$330)
2★ TENNESSEE -2 over Oakland	L (\$220)
2★ NY Giants +4 over DALLAS	L (\$220)
Week 3 College:	
3★ SOUTH CAROLINA (-6.5) over Kentucky	L (\$330)
3★ PITTSBURGH (+13.5) over Oklahoma St	L (\$330)
2★ Illinois (+17.5) over SOUTH FLORIDA	L (\$220)
2★ Tulane (+34) over OKLAHOMA	L (\$220)
2★ Notre Dame/BOSTON COLL UNDER 51	L (\$220)
Week 2 NFL:	
3★ OVER 47.5 Philadelphia/KANSAS CITY	L (\$330)
2★ Chicago (+7) over TAMPA BAY	L (\$220)
2★ Washington (+3) over L.A. RAMS	W \$200
Week 4 College:	
3★ MICHIGAN ST (+4) over Notre Dame	L (\$330)
3★ MARYLAND (-3.5) over Central Florida	L (\$330)
2★ NC State (+13) over FLORIDA STATE	W \$200
2★ TULANE (-2.5) over Army	W \$200
2★ ARIZONA ST (+15) over Oregon	W \$200
Week 3 NFL:	
3★ Kansas City (-3) over L.A. CHARGERS	W \$300
2★ New Orleans (+6) over CAROLINA	W \$200
2★ Denver/BUFFALO UNDER 40.5	L (\$220)
Week 5 College:	
3★ Florida St (-7.5) over WAKE FOREST	L (\$330)
3★ MINNESOTA (-13) over Maryland	L (\$330)
2★ DUKE (+6.5) over Miami, FL	L (\$220)
2★ MICHIGAN ST (-3.5) over Iowa	W \$200
2★ Akron (-2.5) over BOWLING GREEN	W \$200
Week 4 NFL:	
3★ Cincinnati (-3, -120) over CLEVELAND	W \$300
2★ N.Y. Giants +3 over TAMPA BAY	W \$200
2★ L.A. Rams/DALLAS OVER 47.5	W \$200
Week 6 College:	
3★ UTAH (+5.5) over Stanford	W \$300
3★ TCU (-13.5) over West Virginia	L (\$330)
2★ MICHIGAN (-10) over Michigan St	L (\$220)
2★ San Diego St (-10.5) over UNLV	W \$200
2★ Kansas St/TEXAS UNDER 50	L (\$220)
Week 5 NFL:	
3★ Seattle/L.A. RAMS OVER 47	L (\$330)
2★ CINCINNATI (-3) over Buffalo	W \$200
2★ HOUSTON (+1.5) over Kansas City	L (\$220)
Week 7 College:	
3★ Florida St (-7) over DUKE	P \$0
3★ New Mexico (+2.5) over FRESNO ST	L (\$330)
2★ WEST VIRGINIA (-3) over Texas Tech	W \$200
2★ Northern Illinois (-4.5) over BUFFALO	L (\$220)
2★ UTAH ST (-3) over Wyoming	L (\$220)
Week 6 NFL:	
3★ NEW ORLEANS (-5) over Detroit	W \$300
2★ CAROLINA (-3 -120) over Philadelphia	L (\$220)
2★ Pittsburgh (+4.5) over KANSAS CITY	W \$200
Week 8 College:	
3★ LA TECH (-2.5) over Southern Miss	L (\$330)
3★ MICHIGAN ST (-6.5) over Indiana	W \$300
2★ EASTERN MICH (+3) over Western Mich	P \$0
2★ Central Florida (-7 -120) over NAVY	W \$200
2★ MISSOURI (-14.5) over Idaho	W \$200
Week 7 NFL:	
4★ Denver (+1.5) over L.A. CHARGERS	L (\$440)
2★ Jacksonville (-3) over INDIANAPOLIS	W \$200
2★ SAN FRANCISCO (+6) over Dallas	L (\$220)
Week 9 College:	
3★ NC State (+7.5) over NOTRE DAME	L (\$330)
2★ TCU (-6.5) over IOWA ST	L (\$220)
2★ Virginia (+3) over PITTSBURGH	L (\$220)
2★ NORTH TEXAS (-10.5) over Old Dominion	L (\$220)
2★ OVER 64.5 Washington St/ARIZONA	W \$200
Week 8 NFL:	
3★ OVER 45.5 Carolina/TAMPA BAY	L (\$330)
2★ Carolina (+2) over TAMPA BAY	W \$200
2★ OVER 41.5 Indianapolis/CINCINNATI	W \$200
Week 10 College:	
3★ ARIZONA ST (-4) over Colorado	W \$300
3★ Virginia Tech (-2.5) over MIAMI, FL	L (\$330)
2★ South Carolina (+24.5) over GEORGIA	W \$200
2★ VANDERBILT (-9.5) over W Kentucky	W \$200
2★ NOTRE DAME (-13.5) over Wake Forest	L (\$220)
Week 9 NFL:	
3★ Kansas City (PK) over DALLAS	L (\$330)
2★ CAROLINA (-1) over Atlanta	W \$200
2★ SEATTLE (-7) over Washington	L (\$220)
Week 11 College:	
3★ Duke (-3) over ARMY	L (\$330)
3★ AUBURN (+2.5) over Georgia	W \$300
2★ Indiana (-9) over ILLINOIS	W \$200
2★ COLORADO (+13.5) over Usec	L (\$220)
2★ Arizona St (+2.5) over UCLA	L (\$220)

Week 10 NFL:	
3★ L.A. Chargers (+4) over JACKSONVILLE	W \$300
2★ BUFFALO (+3) over New Orleans	L (\$220)
2★ TENNESSEE (-4.5) over Cincinnati	L (\$220)
Week 12 College:	
3★ TEMPLE (+14) over Central Florida	L (\$330)
3★ UL-Monroe (+37) over AUBURN	W \$300
2★ Texas A&M (+3) over MISSISSIPPI	W \$200
2★ California (+16) over STANFORD	W \$200
2★ Virginia (+20) over MIAMI, FL	W \$200
Week 11 NFL:	
3★ CHICAGO (+3) over Detroit	P \$0
2★ MINNESOTA (-2.5) over L.A. Rams	W \$200
2★ DENVER (-2.5) over Cincinnati	L (\$220)
Week 13 College:	
3★ UL-LAFAYETTE (-6) over Ga Southern	L (\$330)
3★ Colorado (+10.5) over UTAH	L (\$330)
2★ Temple (-3) over TULSA	W \$200
2★ Texas St (+25) over TROY	L (\$220)
2★ VIRGINIA (+7) over Virginia Tech	L (\$220)
Week 12 NFL:	
3★ INDIANAPOLIS (+3.5) over Tennessee	L (\$330)
2★ Carolina (-4.5) over N.Y. JETS	W \$200
2★ Miami (+16.5) over NEW ENGLAND	L (\$220)
Week 14 College:	
2★ Massachusetts (+1.5) over FIU	L (\$220)
2★ Akron (+21.5) over Toledo	W \$200
1★ TCU/OKLAHOMA UNDER 63.5	W \$100
Week 13 NFL:	
3★ SEATTLE (+6) over Philadelphia	W \$300
2★ San Francisco (+3.5) over CHICAGO	W \$200
2★ N.Y. JETS (+3.5) over Kansas City	W \$200
Week 14 NFL:	
3★ ARIZONA (+3) over Tennessee	W \$300
2★ KANSAS CITY (-4) over Oakland	W \$200
2★ ATLANTA (+1.5) over New Orleans	W \$200
Week 15 NFL:	
3★ KANSAS CITY (+1.5) over L.A. Chargers	W \$300
2★ Dallas (-3) over OAKLAND	P \$0
2★ Arizona (+4.5) over WASHINGTON	L (\$220)
Week 16 NFL:	
3★ NEW ORLEANS (-5.5) over Atlanta	W \$300
2★ Cleveland (+6.5) over CHICAGO	L (\$220)
2★ SAN FRANCISCO (+4.5) over Jacksonville	W \$200
Week 17 NFL:	
2★ Buffalo (-3 EVEN) over MIAMI	W \$200
2★ Cincinnati (+10 -120) over BALTIMORE	W \$200
1★ San Francisco (-1) over L.A. RAMS	W \$100
Bowls and College Football Playoffs:	
1★ Troy (-6) over North Texas	W \$100
1★ Western Kentucky (-6) over Georgia St	L (\$110)
1★ Oregon/Boise St OVER 59.5	W \$100
1★ Colorado St (-5.5) over Marshall	L (\$110)
2★ Middle Tennessee/Arkansas St OVER 62	W \$200
1★ Akron (+22.5) over Florida Atlantic	L (\$110)
1★ Louisiana Tech (+5) over Smu	W \$100
1★ Florida International (+7.5) over Temple	L (\$110)
2★ Uab (+7.5) over Ohio	L (\$220)
1★ Central Michigan (PK) over Wyoming	L (\$110)
1★ Texas Tech/South Florida OVER 67	W \$100
3★ San Diego St (-7) over Army	L (\$330)
1★ Appalachian St (+8) over Toledo	W \$100
1★ Fresno St (+2.5) over Houston	W \$100
1★ Utah (-6.5) over West Virginia	W \$100
1★ Duke (-4.5) over Northern Illinois	W \$100
2★ Kansas St (-2.5) over Ucla	W \$200
3★ Southern Miss (+16.5) over Florida St	L (\$330)
2★ Boston College (+3) over Iowa	L (\$220)
2★ Texas (+3) over Missouri	W \$200
1★ Purdue (+3.5) over Arizona	W \$100
1★ Virginia/NAVY OVER 55	W \$100
1★ Oklahoma St (-4) over Virginia Tech	W \$100
2★ Stanford (+2.5) over TCU	W \$200
4★ Michigan St (+2) over Washington St	W \$400
1★ Wake Forest (-3) over Texas A&M	P \$0
1★ Arizona St (+6.5) over N.C. State	L (\$110)
1★ Kentucky (+8) over Northwestern	W \$100
1★ Utah St (-4) over New Mexico St	L (\$110)
2★ Southern Cal (+7.5) over Ohio St	L (\$220)
3★ Louisville (-6.5) over Mississippi St	L (\$330)
2★ Iowa St (+4) over Memphis	W \$200
1★ Penn St (-2) over Washington	W \$100
3★ Miami, FL (+6) over Wisconsin	L (\$330)
1★ South Carolina (+8) over Michigan	W \$100
1★ Central Florida (+9.5) over Auburn	W \$100
2★ Lsu (-3) over Notre Dame	L (\$220)
2★ Oklahoma (+2) over Georgia	L (\$220)
1★ Clemson (+3) over Alabama	L (\$110)
1★ UNDER 45 Alabama/Georgia	L (\$110)
NFL Playoffs:	
1★ UNDER 44.5 Tennessee/KANSAS CITY	W \$100
2★ Atlanta +6.5 over L.A. RAMS	W \$200
1★ JACKSONVILLE -8 over Buffalo	L (\$110)
1★ OVER 48.5 Carolina/NEW ORLEANS	W \$100
1★ PHILADELPHIA (+3) over Atlanta	W \$100
1★ UNDER 47.5 Tennessee/NEW ENGLAND	L (\$110)
1★ UNDER 41 Jacksonville/PITTSBURGH	L (\$110)
1★ MINNESOTA (-4) over New Orleans	W \$200
1★ UNDER 46.5 Jacksonville/NEW ENGL	W \$100
2★ PHILADELPHIA (+3) over Minnesota	W \$200
1★ New England (-180) over Philadelphia	L (\$180)

2018-19 Season: 103-64-1 (62%)

Week 1 College:	
3★ Northern Illinois +10.5 over IOWA	L (\$330)
2★ Florida Atlantic +21 over OKLAHOMA	L (\$220)
2★ UMass +18 over BOSTON COLLEGE	L (\$220)
2★ Texas -13.5 over Maryland	L (\$220)
2★ WYOMING +1.5 over Washington St	L (\$220)
Week 2 College:	
3★ Georgia Tech (-3) over SOUTH FLORIDA	L (\$330)
3★ STANFORD (-5) over Usec	W \$300
2★ Arizona (+4.5) over HOUSTON	L (\$220)
2★ TEXAS (-23) over Tulsa	L (\$220)
2★ California (+3.5) over BYU	W \$200
Week 1 NFL:	
3★ Pittsburgh/CLEVELAND UNDER 44	W \$300
2★ MINNESOTA -6 over San Francisco	W \$200
2★ MIAMI +1.5 over Tennessee	W \$200
Week 3 College:	
3★ PURDUE +7 (-120) over Missouri	W \$300
3★ Georgia Southern +34 over CLEMSON	W \$300
2★ SYRACUSE +3.5 (-120) over Florida St	W \$200
2★ UAB +4 over Tulane	W \$200
2★ UL-Monroe +27 over TEXAS A&M	L (\$220)
Week 2 NFL:	
3★ PITTSBURGH -4 over Kansas City	L (\$330)
2★ Indianapolis +6 over WASHINGTON	W \$200
2★ ATLANTA -6 over Carolina	W \$200
Week 4 College:	
3★ Michigan St -4.5 over INDIANA	W \$300
3★ IOWA ST -18.5 over Akron	L (\$330)
2★ BAYLOR -7.5 over Kansas	W \$200
2★ Louisiana Tech +21 over LSU	W \$200
2★ Texas A&M +27 over ALABAMA	W \$200
Week 3 NFL:	
3★ SEATTLE -1.5 over Dallas	W \$300
2★ BALTIMORE -5 over Denver	W \$200
2★ CLEVELAND -3 over N.Y. Jets	W \$200
Week 5 College:	
3★ FRESNO ST -7.5 over Toledo	W \$300
3★ CALIFORNIA +3 (-120) over Oregon	L (\$360)
2★ Byu +17.5 over WASHINGTON	L (\$220)
2★ LSU -12 over Ole Miss	W \$200
2★ Ohio St/PENN ST UNDER 72	W \$200
Week 4 NFL:	
3★ NEW ENGLAND -7 (-105) over Miami	W \$300
2★ Cincinnati +5.5 over ATLANTA	W \$200
2★ OAKLAND -2.5 over Cleveland	W \$200
Week 6 College:	
3★ TEXAS A&M -5.5 over Kentucky	W \$300
3★ Iowa -7 over MINNESOTA	W \$300
2★ Northern Illinois -3 over BALL ST	W \$200
2★ Northwestern +11 over MICHIGAN ST	W \$200
2★ WYOMING +3.5 over Hawaii	L (\$220)
Week 5 NFL:	
3★ Oakland +5.5 over L.A. CHARGERS	L (\$330)
2★ BUFFALO +3.5 over Tennessee	W \$200
2★ Arizona +4.5 over SAN FRANCISCO	W \$200
Week 7 College:	
3★ CALIFORNIA -7 over Ucla	L (\$330)
3★ Duke +3 over GEORGIA TECH	W \$300
2★ Florida -7 over VANDERBILT	W \$200
2★ IOWA ST +6.5 over West Virginia	W \$200
2★ RICE +16.5 over Uab	L (\$220)
Week 6 NFL:	
3★ TENNESSEE +3 (-120) over Baltimore	L (\$330)
2★ Indianapolis +2.5 over N.Y. JETS	L (\$220)
2★ Pittsburgh +2.5 over CINCINNATI	W \$200
Week 8 College:	
3★ ARKANSAS -7 over Tulsa	W \$300
3★ Stanford -2.5 over ARIZONA ST	W \$300
2★ UAB PK over North Texas	W \$200
2★ UTAH -6.5 over Usec	W \$200
2★ Nevada +3 over HAWAII	W \$200
Week 7 NFL:	
3★ JACKSONVILLE -4.5 over Houston	L (\$330)
2★ Minnesota -3 (-120) over N.Y. JETS	W \$200
2★ TAMPA BAY -3 (-120) over Cleveland	P \$0
Week 9 College:	
3★ Texas A&M +2.5 over MISSISSIPPI ST	L (\$330)
3★ IOWA ST -3.5 over Texas Tech	W \$300
2★ STANFORD -3 over Washington St	L (\$220)
2★ Iowa +6.5 over PENN ST	W \$200
2★ ARKANSAS +1.5 over Vanderbilt	L (\$220)
Week 8 NFL:	
3★ Green Bay +9.5 over L.A. RAMS	W \$300
2★ San Francisco PK over ARIZONA	L (\$220)
2★ Denver/KANSAS CITY UNDER 54	W \$200
Week 10 College:	
3★ Louisiana Tech +23 over MISSISSIPPI ST	L (\$330)
3★ Michigan St -2.5 over MARYLAND	W \$300
2★ Ohio -2 over WESTERN MICHIGAN	W \$200
2★ FLORIDA -6 over Missouri	L (\$220)
2★ NORTHWESTERN +9.5 over Notre Dame	L (\$220)
Week 9 NFL:	
3★ SEATTLE -1.5 over L.A. Chargers	L (\$330)
2★ MINNESOTA -4.5 over Detroit	W \$200
2★ Pittsburgh +3 over BALTIMORE	W \$200
Week 11 College:	
3★ NORTHERN ILLINOIS -3.5 over Toledo	W \$300
3★ Texas -1.5 over TEXAS TECH	W \$300
2★ PITTSBURGH -3 over Virginia Tech	W \$200
2★ Liberty +23.5 over VIRGINIA	W \$200
2★ TENNESSEE +6 over Kentucky	W \$200

Week 10 NFL:	
3★ PHILADELPHIA -6.5 over Dallas	L (\$330)
2★ Seattle +10 over L.A. RAMS	W \$200
2★ Buffalo +7.5 over N.Y. JETS	W \$200
Week 12 College:	
3★ MINNESOTA +2 over Northwestern	L (\$330)
3★ Syracuse +10.5 over Notre Dame	L (\$330)
2★ NEBRASKA +2.5 over Michigan St	W \$200
2★ OREGON -3.5 over Arizona St	L (\$220)
2★ OVER 59.5 Cincinnati/CENT. FLORIDA	L (\$220)
Week 11 NFL:	
3★ Kansas City +3.5 over L.A. RAMS	W \$300
2★ Philadelphia +9 over NEW ORLEANS	L (\$220)
2★ Minnesota +2.5 over CHICAGO	L (\$220)
Week 13 College:	
3★ SMU -2 over Tulsa	L (\$330)
3★ Nebraska +10 over IOWA	W \$300
2★ MEMPHIS -7 over Houston	W \$200
2★ OHIO ST +4.5 over Michigan	W \$200
2★ Stanford -6.5 over UCLA	W \$200
Week 12 NFL:	
3★ BUFFALO +3.5 (-120) over Jacksonville	W \$300
2★ CAROLINA -3.5 over Seattle	L (\$220)
2★ DENVER +3 (EV) over Pittsburgh	W \$200
Week 14 College:	
2★ Washington -5.5 over Utah	W \$200
1★ Texas +8 over Oklahoma	L (\$110)
Week 13 NFL:	
3★ PITTSBURGH -3.5 over L.A. Chargers	L (\$330)
2★ DALLAS +7.5 over New Orleans	W \$200
2★ ATLANTA -1 over Baltimore	L (\$220)
Week 14 NFL:	
3★ Indianapolis +4.5 over HOUSTON	W \$300
2★ Carolina -1.5 over CLEVELAND	L (\$220)
2★ GREEN BAY -5.5 over Atlanta	W \$200
Week 15 NFL:	
3★ INDIANAPOLIS -3 (EV) over Dallas	W \$300
2★ MINNESOTA -7 over Miami	W \$200
2★ Tennessee +2.5 (EV) over N.Y. GIANTS	W \$200
Week 16 NFL:	
3★ SEATTLE +2.5 over Kansas City	W \$300
2★ Minnesota -5.5 over DETROIT	W \$200
2★ MIAMI -4 over Jacksonville	L (\$220)
Week 17 NFL:	
3★ BUFFALO -3.5 over Miami	W \$300
2★ GREEN BAY -8 over Detroit	L (\$220)
1★ Indianapolis -3 over TENNESSEE	W \$100
Bowls and College Football Playoffs:	
1★ North Texas (+8) over Utah St	L (\$110)
1★ UL-Lafayette (+3.5) over Tulane	L (\$110)
1★ Fresno St (-4.5) over Arizona St	W \$100
1★ Eastern Mich (+2.5) over Georgia Southern	W \$100
2★ Middle Tenn (+7) over Appalachian St	L (\$220)
2★ Uab (-2.5) over Northern Illinois	W \$200
1★ San Diego St (+3) over Ohio	L (\$110)
1★ Marshall/SOUTH FLORIDA UNDER 55.5	L (\$110)
2★ Florida International (+5.5) over Toledo	W \$200
1★ Western Michigan (+12) over BYU	L (\$110)
1★ Wake Forest (+4.5) over Memphis	W \$100
1★ Army (-3) over Houston	W \$100
3★ Troy (+3) over Buffalo	W \$300
1★ Louisiana Tech/HAWAII OVER 60	L (\$110)
1★ Boston Coll/Boise St UNDER 56	Cancelled
2★ Georgia Tech (-5) over Minnesota	L (\$220)
1★ TCU/California OVER 39.5	L (\$110)
2★ Duke (+4.5) over Temple	W \$200
1★ Wisconsin (+3.5) over Miami, FL	W \$100
1★ Baylor (+4.5) over Vanderbilt	W \$100
1★ Purdue/Auburn OVER 55	W \$100
3★ Syracuse (+1.5) over West Virginia	W \$300
2★ Iowa St (+3.5) over Washington St	W \$200
2★ Nevada (+2) over Arkansas St	W \$200
2★ Florida (+7.5) over Michigan	W \$200
1★ South Carolina (-5) over Virginia	L (\$110)
1★ Alabama (-14) over Oklahoma	L (\$110)
1★ Notre Dame (+13.5) over Clemson	L (\$110)
2★ Va Tech (+5.5) over Cincinnati	W \$200
1★ Stanford (-5.5) over Pittsburgh	L (\$110)
2★ Michigan St (+2.5) over Oregon	W \$200
1★ Missouri/Oklahoma St UNDER 74.5	W \$100
1★ Northwestern (+7) over Utah	W \$100
2★ Texas A&M (-7) over NC State	W \$200
1★ Iowa (+7) over Mississippi St	W \$100
1★ Penn St (-6.5) over Kentucky	L (\$110)
1★ LSU (-7) over Central Florida	W \$100
4★ Ohio St (-6.5) over Washington	L (\$440)
2★ Texas (+13) over Georgia	W \$200
1★ Clemson/Alabama OVER 59.5	W \$100
NFL Playoffs:	
1★ Indianapolis (+1.5) over HOUSTON	W \$100
1★ Seattle (+1.5) over DALLAS	L (\$110)
1★ L.A. Chargers (+2.5) over BALTIMORE	W \$100
1★ CHICAGO (-5.5) over Philadelphia	L (\$110)
2★ Indianapolis (+5.5) over KANSAS CITY	L (\$220)
1★ L.A. RAMS (-7) over Dallas	W \$100
2★ NEW ENGLAND (-4) over L.A. Chargers	W \$200
1★ NEW ORLEANS (-8) over Philadelphia	L (\$110)
1★ NEW ORLEANS (-3.5) over L.A. RAMS	L (\$110)
1★ KANSAS CITY (-3) over New England	L (\$110)
1★ New England/L.A. Rams UNDER 56.5	W \$100

2019-20 Season: 86-81-6 (51%)

Week 1 College:
 3★ Florida St (-5.5) over Boise St L (\$330)
 2★ RUTGERS (-15.5) over Massachusetts W \$200
 2★ Louisiana Tech (+20.5) over TEXAS L (\$220)
 2★ LOUISVILLE (+20) over Notre Dame W \$200

Week 2 College:
 3★ Nebraska (-3.5) over COLORADO L (\$330)
 2★ Texas A&M (+17.5) over CLEMSON W \$200
 2★ VIRGINIA TECH (-28) over Old Dominion L (\$220)
 2★ WASHINGTON (-14) over California L (\$220)
 2★ PURDUE (-7) over Vanderbilt W \$200

Week 1 NFL:
 2★ MINNESOTA (-4) over Atlanta W \$200
 2★ Tennessee (+5.5) over CLEVELAND W \$200
 2★ Houston (+7) over NEW ORLEANS W \$200

Week 3 College:
 3★ VIRGINIA (-7) over Florida St P \$0
 2★ Air Force (+4.5) over COLORADO W \$200
 2★ Oklahoma St (-14) over TULSA W \$200
 2★ WASHINGTON (-21) over Hawaii W \$200
 2★ Florida/KENTUCKY UNDER 50.5 W \$200

Week 2 NFL:
 3★ PITTSBURGH (-4) over Seattle L (\$330)
 2★ MIAMI (+19) over New England L (\$220)
 2★ OAKLAND (+7.5) over Kansas City L (\$220)

Week 4 College:
 3★ Washington (-6) over BYU W \$300
 2★ Old Dominion (+29.5) over VIRGINIA W \$200
 2★ Southern Miss (+39) over ALABAMA L (\$220)
 2★ TULSA (-3) over Wyoming L (\$220)
 2★ GEORGIA (-14) over Notre Dame L (\$220)

Week 3 NFL:
 3★ Houston (+3.5-120) over L.A. CHARGERS W \$300
 2★ MINNESOTA (-8.5) over Oakland W \$200
 2★ L.A. Rams (-3) over CLEVELAND W \$200

Week 5 College:
 3★ NEVADA (-2.5) over Hawaii L (\$330)
 3★ ARIZONA (-6.5) over UCLA L (\$330)
 2★ BOSTON COLL (+6.5) over Wake Forest W \$200
 2★ LIBERTY (-7.5) over New Mexico L (\$220)
 2★ NEBRASKA (+17.5) over Ohio St L (\$220)

Week 4 NFL:
 3★ Seattle (-5) over ARIZONA W \$300
 2★ DETROIT (+6.5) over Kansas City W \$200
 2★ NEW ORLEANS (+2.5) over Dallas W \$200

Week 6 College:
 3★ CINCINNATI (+4) over Central Florida W \$300
 3★ UAB (-8.5) over Rice W \$300
 2★ Boston College (+6) over LOUISVILLE W \$200
 2★ NORTHERN ILLINOIS (-5) over Ball St L (\$220)
 2★ Utah St (+27.5) over LSU L (\$220)

Week 5 NFL:
 3★ Chicago (-5) over Oakland L (\$330)
 2★ Minnesota (-2.5) over N.Y. GIANTS W \$200
 2★ Green Bay (+3.5) over DALLAS W \$200

Week 7 College:
 3★ NEVADA (-2) over San Jose St W \$300
 3★ Texas (+11) over Oklahoma W \$300
 2★ TEMPLE (+6) over Memphis W \$200
 2★ Fresno St (+3.5) over AIR FORCE L (\$220)
 2★ IOWA (+3.5) over Penn St L (\$220)

Week 6 NFL:
 3★ GREEN BAY (-4) over Detroit L (\$330)
 2★ Carolina (-2) over Tampa Bay W \$200
 2★ L.A. RAMS (-3, -120) over San Francisco L (\$220)

Week 8 College:
 3★ OKLAHOMA ST (-3.5) over Baylor L (\$330)
 3★ STANFORD (-7) over UCLA L (\$330)
 2★ Indiana (-5) over SOUTH CAROLINA W \$200
 2★ LA TECH (+1) over Southern Miss W \$200
 2★ PENN ST (-9) over Michigan L (\$220)

Week 7 NFL:
 3★ N.Y. GIANTS (-3) over Arizona L (\$330)
 2★ INDIANAPOLIS (-1) over Houston W \$200
 2★ GREEN BAY (-5) over Oakland W \$200

Week 9 College:
 3★ PURDUE (-9.5) over Illinois L (\$330)
 3★ MICHIGAN (+1) over Notre Dame W \$300
 2★ Washington St (+14) over OREGON W \$200
 2★ Virginia (-3.5) over LOUISVILLE L (\$220)
 2★ Arizona St (-3.5) over UCLA L (\$220)

Week 8 NFL:
 3★ INDIANAPOLIS (-5.5) over Denver L (\$330)
 2★ HOUSTON (-6.5) over Oakland L (\$220)
 2★ KANSAS CITY (+4) over Green Bay L (\$220)

Week 10 College:
 3★ BYU (+3.5) over UTAH ST W \$300
 3★ WASHINGTON (+3.5) over Utah L (\$330)
 2★ Virginia Tech (+17.5) over NOTRE DAME W \$200
 2★ WKU (-1) over Florida Atlantic L (\$220)
 2★ KANSAS (+6) over Kansas St L (\$220)

Week 9 NFL:
 3★ Tampa Bay (+6.5) over SEATTLE W \$300
 2★ Jacksonville (+1.5) over Houston L (\$220)
 2★ PHILADELPHIA (-4.5) over Chicago W \$200

Week 11 College:
 3★ BYU (-17) over Liberty L (\$330)
 3★ SO. CAROLINA (-5.5) over Appalachian St L (\$330)
 2★ DUKE (+8) over Notre Dame L (\$220)
 2★ Stanford (-3.5) over COLORADO L (\$220)
 2★ BOISE ST (-13) over Wyoming L (\$220)

Week 10 NFL:
 3★ Minnesota (+3) over DALLAS W \$300
 2★ Buffalo (+3) over CLEVELAND P \$0
 2★ Atlanta (+13) over NEW ORLEANS W \$200

Week 12 College:
 3★ AUBURN (+2.5) over Georgia L (\$330)
 3★ Alabama/MISSISSIPPI ST UNDER 61.5 W \$300
 2★ IOWA (-3) over Minnesota W \$200
 2★ Syracuse (+10.5) over DUKE W \$200
 2★ Texas (+7) over IOWA ST W \$200

Week 11 NFL:
 3★ MIAMI (+6) over Buffalo L (\$330)
 2★ Pittsburgh (+3-120) over CLEVELAND L (\$220)
 2★ UNDER 40.5 Chicago/L.A. RAMS W \$200

Week 13 College:
 3★ ARIZONA ST (+14.5) over Oregon W \$300
 3★ San Diego St (+3) over HAWAII P \$0
 2★ Boston College (+19) over NOTRE DAME L (\$220)
 2★ UCLA (+14) over USC L (\$220)
 2★ Texas (+5.5) over BAYLOR L (\$220)

Week 12 NFL:
 3★ N.Y. JETS (+3-120) over Oakland W \$300
 2★ N.Y. Giants (+6) over CHICAGO W \$200
 2★ TENNESSEE (-3-120) over Jacksonville W \$200

Week 14 College:
 3★ MEMPHIS (-11) over Cincinnati L (\$330)
 3★ Army (+2.5) over HAWAII L (\$330)
 2★ Northwestern (+8.5) over ILLINOIS W \$200
 2★ OKLAHOMA ST (+13) over Oklahoma L (\$220)
 2★ Oregon St (+19.5) over OREGON W \$200

Week 13 NFL:
 3★ INDIANAPOLIS (-2.5) over Tennessee L (\$330)
 2★ DALLAS (-6.5) over Buffalo L (\$220)
 2★ PITTSBURGH (+2) over Cleveland W \$200

Week 15 College:
 2★ UNDER 46 Oregon/Utah L (\$220)
 1★ FLORIDA ATLANTIC -7.5 over Uab W \$100

Week 14 NFL:
 3★ L.A. RAMS (PK) over Seattle W \$300
 2★ Indianapolis (+3) over TAMPA BAY P \$0
 2★ NEW ENGLAND (-3) over Kansas City L (\$220)

Week 15 NFL:
 3★ Atlanta (+11) over SAN FRANCISCO W \$300
 2★ New England (-9.5) over CINCINNATI W \$200
 2★ Miami (+3.5) over N.Y. GIANTS L (\$220)

Week 16 NFL:
 3★ MINNESOTA (-5) over Green Bay L (\$330)
 2★ TENNESSEE (+3-120) over New Orleans L (\$220)
 2★ Arizona (+9.5) over SEATTLE W \$200

Week 17 NFL:
 2★ Pittsburgh/BALTIMORE UNDER 38 P \$0
 2★ CINCINNATI (+3-120) over Cleveland W \$200
 2★ N.Y. GIANTS (+4.5) over Philadelphia L (\$220)

Bowls and College Football Playoffs:
 1★ UNDER 51.5 Buffalo/Charlotte W \$100
 1★ Kent St (+6.5) over Utah St W \$100
 1★ San Diego St (-3.5) over Central Mich W \$100
 1★ Liberty (+4) over Georgia Southern W \$100
 2★ Smu (-3) over FLORIDA ATLANTIC L (\$220)
 2★ Fiu (+2.5) over Arkansas St W \$100
 1★ Washington (-3.5) over Boise St W \$100
 1★ Uab (+16.5) over Appalachian St W \$100
 2★ Marshall (+17.5) over Central Florida L (\$220)
 1★ HAWAII (+2) over BYU W \$100
 1★ Louisiana Tech (+6) over Miami, FL W \$100
 1★ Eastern Michigan (+11) over Pittsburgh W \$100
 3★ North Carolina (-4.5) over Temple W \$300
 1★ Wake Forest (+4.5) over Michigan St L (\$110)
 1★ Oklahoma St (+7) over Texas A&M W \$100
 1★ Use/Iowa OVER 52 W \$100
 2★ Washington St/Air Force OVER 67 L (\$220)
 2★ Iowa St (+3.5) over Notre Dame L (\$220)
 2★ Penn St (-7) over Memphis W \$200
 1★ Oklahoma (+13.5) over Lsu L (\$110)
 1★ Ohio St (+2) over Clemson L (\$110)
 2★ Western Michigan (+3.5) over Wku W \$200
 1★ Illinois/California UNDER 43 L (\$100)
 1★ Virginia/Florida OVER 54.5 W \$110
 1★ Mississippi St/Louisville UNDER 63.5 L (\$110)
 1★ Florida St (+4.5) over Arizona St L (\$110)
 2★ Kansas St (+2.5) over Navy L (\$220)
 1★ Wyoming (-7) over Georgia St W \$100
 2★ Texas (+7) over Utah W \$200
 1★ Virginia Tech (-2.5) over Kentucky L (\$110)
 1★ Michigan/Alabama OVER 58.5 L (\$110)
 3★ Auburn (-7) over Minnesota L (\$330)
 1★ Oregon (+2.5) over Wisconsin W \$100
 1★ Georgia (-6) over Baylor W \$100
 1★ Cincinnati (-7-115) over Boston Coll W \$100
 1★ Tennessee (-2) over Indiana L (\$110)
 1★ OVER 58.5 Ohio/Nevada L (\$110)
 1★ Tulane (-7) over Southern Miss W \$100
 1★ OVER 55.5 Miami, Oh/Ul-Lafayette L (\$110)
 2★ Clemson (+6) over Lsu L (\$220)

NFL Playoffs:
 1★ UNDER 43.5 Buffalo/HOUSTON W \$100
 1★ NEW ENGLAND (-5) over Tennessee L (\$110)
 1★ NEW ORLEANS (-8) over Minnesota L (\$110)
 1★ PHILADELPHIA (+1.5) over Seattle L (\$110)
 1★ Minnesota (+7) over SAN FRANCISCO L (\$110)
 1★ UNDER 47 Tennessee/BALTIMORE W \$100
 1★ KANSAS CITY (-9.5) over Houston W \$100
 1★ UNDER 47 Seattle/GREEN BAY L (\$110)
 1★ SAN FRANCISCO (-7.5) over Green Bay W \$100
 1★ KANSAS CITY (-7.5) over Tennessee W \$100
 2★ Patrick Mahomes OVER 28.5 Rush Yards W \$200

2020-21 Season: 59-58-3 (50%)

Week 1 College:
 1★ Arkansas St (+19) over MEMPHIS W \$100

Week 2 College:
 1★ Georgia Tech (+12.5) over FLORIDA ST W \$100
 1★ Coastal Carolina (+7) over KANSAS W \$100

Week 1 NFL:
 2★ Arizona (+7) over SAN FRANCISCO W \$200
 2★ L.A. RAMS (+3) over Dallas W \$200
 2★ DENVER (+2.5) over Tennessee W \$200

Week 3 College:
 1★ SOUTHERN MISS (-5) over Louisiana Tech L (\$110)

Week 2 NFL:
 2★ Carolina/TAMPA BAY OVER 47.5 W \$200
 2★ Minnesota (+3) over INDIANAPOLIS L (\$220)
 2★ New England (+4) over SEATTLE L (\$220)

Week 4 College:
 2★ LIBERTY (-6.5) over Florida International L (\$220)
 1★ Iowa St (-2.5) over TCU W \$100
 1★ Kentucky (+7.5) over AUBURN L (\$110)

Week 3 NFL:
 2★ NEW ENGLAND (-6) over Las Vegas W \$200
 2★ N.Y. GIANTS (+4) over San Francisco L (\$220)
 2★ Kansas City (+3.5) over BALTIMORE W \$200

Week 5 College:
 1★ WEST VIRGINIA (+3) over Baylor W \$100
 1★ COA. CAROLINA (+3.5) over Arkansas St W \$100
 1★ Navy (-6.5) over AIR FORCE L (\$110)

Week 4 NFL:
 2★ UNDER 44 Indianapolis/CHICAGO W \$200
 2★ MIAMI (+6.5) over Seattle L (\$220)
 2★ New England (+7) over KANSAS CITY L (\$220)

Week 6 College:
 2★ KENTUCKY (-2) over Mississippi St W \$200
 1★ OVER 51.5 Duke/SYRACUSE W \$100
 1★ Florida St (+21) over NOTRE DAME W \$100

Week 5 NFL:
 2★ UNDER 47 Indianapolis/CLEVELAND L (\$220)
 1★ Carolina (+2) over ATLANTA W \$100
 1★ Cincinnati (+13) over BALTIMORE L (\$110)

Week 7 College:
 2★ SOUTH CAROLINA (+3) over Auburn W \$200
 1★ OVER 59.5 Duke/NC STATE L (\$110)
 1★ Louisville (+17) over NOTRE DAME W \$100

Week 6 NFL:
 2★ MINNESOTA (-3.5) over Atlanta L (\$220)
 1★ SAN FRANCISCO (+3.5) over L.A. Rams W \$100
 1★ DALLAS (+2.5) over Arizona L (\$110)

Week 8 College:
 2★ PITTSBURGH (+10.5) over Notre Dame L (\$220)
 2★ Iowa St (+3.5) over OKLAHOMA ST W \$200
 1★ UNDER 55.5 South Carolina/LSU L (\$110)
 1★ OVER 53 Louisiana Tech/UTSA P \$0

Week 7 NFL:
 2★ Carolina (+7.5) over New Orleans W \$200
 2★ LAS VEGAS (+3) over Tampa Bay L (\$220)
 2★ Kansas City/DENVER UNDER 46 L (\$220)

Week 9 College:
 2★ Indiana (-10) over RUTGERS W \$200
 2★ CINCINNATI (-6.5) over Memphis W \$200
 2★ Rice (+1.5) over SOUTHERN MISS W \$200
 2★ Ole Miss (-16.5) over VANDERBILT W \$200
 1★ UNDER 60 Hawaii/WYOMING W \$100

Week 8 NFL:
 2★ BALTIMORE (-3.5) over Pittsburgh L (\$220)
 1★ New Orleans (-4) over CHICAGO L (\$110)
 1★ UNDER 42.5 New England/BUFFALO L (\$110)

Week 10 College:
 2★ IOWA (-7) over Michigan St W \$200
 2★ HAWAII (-15.5) over New Mexico L (\$220)
 1★ OREGON ST (-1.5) over Washington St L (\$110)
 1★ Florida (+3.5, -115) over Georgia W \$100

Week 9 NFL:
 3★ ARIZONA (-5) over Miami L (\$330)
 1★ Baltimore (-2.5) over INDIANAPOLIS W \$100
 1★ Carolina (+10.5) over KANSAS CITY W \$100

Week 11 College:
 2★ BOSTON COLL (+13.5) over Notre Dame L (\$220)
 1★ STANFORD (-7) over Colorado L (\$110)
 1★ TULANE (-5) over Army W \$100
 1★ Arkansas (+17.5) over FLORIDA L (\$110)

Week 10 NFL:
 2★ Philadelphia (-3-120) over N.Y. GIANTS L (\$220)
 1★ L.A. Chargers (+2.5) over MIAMI L (\$110)
 1★ CHICAGO (+2.5 EV) over Minnesota L (\$110)
 1★ ARIZONA -2.5 (-115) over Buffalo L (\$110)

Week 12 College:
 2★ OREGON (-13.5) over UCLA L (\$220)
 2★ PENN ST (+2.5) over Iowa L (\$220)
 1★ OREGON ST (+3.5) over California W \$100
 1★ OKLAHOMA (-7) over Oklahoma St W \$100
 1★ CENTRAL FLORIDA +5.5 over Cincinnati W \$100

Week 11 NFL:
 2★ Kansas City (-7) over LAS VEGAS L (\$220)
 1★ Detroit (+1.5) over CAROLINA L (\$110)
 1★ Cleveland/PHILADELPHIA OVER 47 L (\$110)

Week 13 College:
 2★ UCLA (-10) over Arizona W \$200
 2★ BOSTON COLLEGE (-1) over Louisville W \$200
 1★ Pittsburgh/CLEMSON OVER 55 W \$100
 1★ PURDUE (-11.5) over Rutgers L (\$110)
 1★ Mississippi St/OLE MISS OVER 69.5 L (\$110)

Week 12 NFL:
 1★ MINNESOTA (-3.5) over Carolina L (\$110)
 1★ ATLANTA (+3) over Las Vegas W \$100
 1★ San Francisco (+7) over L.A. RAMS W \$100

Week 14 College:
 2★ Colorado (-7-115) over ARIZONA W \$200
 2★ AUBURN (+7) over Texas A&M L (\$220)
 1★ Ball St (+1.5) over CENTRAL MICHIGAN W \$100
 1★ UTAH (-11) over Oregon St L (\$110)
 1★ Oklahoma St (-2.5) over TCU L (\$110)

Week 13 NFL:
 1★ Cleveland (+5.5) over TENNESSEE W \$100
 1★ ATLANTA (+3) over New Orleans L (\$110)
 1★ San Francisco (+2.5) over Buffalo L (\$110)

Week 15 College:
 2★ Rutgers (+8) over MARYLAND W \$200
 1★ TROY (+13.5) over Coastal Carolina W \$100
 1★ Fresno St (-11.5) over New Mexico L (\$110)
 1★ Tennessee (-15) over VANDERBILT W \$100

Week 14 NFL:
 2★ San Francisco (-3, -120) over Washington L (\$220)
 1★ BUFFALO (-2.5, -115) over Pittsburgh W \$100
 1★ Indianapolis/LAS VEGAS OVER 51.5 W \$100

Week 16 College:
 1★ Tulsa (+14.5) over CINCINNATI W \$100
 1★ Stanford (+7) over UCLA W \$100

Week 15 NFL:
 2★ DENVER (+6.5) over Buffalo L (\$220)
 1★ New England (+2.5) over MIAMI L (\$110)
 1★ MINNESOTA (-3) over Chicago L (\$110)

Week 16 NFL:
 2★ L.A. Rams (+1.5) over Seattle L (\$220)
 1★ Carolina (+2.5) over WASHINGTON W \$100
 1★ OVER 54 Tampa Bay/DETROIT P \$0

Week 17 NFL:
 1★ Atlanta (+6.5) over TAMPA BAY L (\$110)
 1★ CAROLINA (+6.5) over New Orleans L (\$110)
 1★ L.A. Chargers (-3.5) over KANSAS CITY W \$100

Bowls and College Football Playoffs:
 1★ Memphis (-8) over Florida Atlantic W \$100
 1★ Liberty (+7.5) over Coastal Carolina W \$100
 1★ UNDER 57 Ul-Lafayette/Utah W \$100
 1★ Oklahoma (+3) over Florida W \$100
 1★ San Jose St (-9) over Ball St L (\$110)
 1★ Georgia (-7) over Cincinnati L (\$110)
 1★ Iowa State (-4) over Oregon W \$100
 2★ Texas A&M (-7.5) over North Carolina W \$200

NFL Playoffs:
 1★ WASHINGTON (+8) over Tampa Bay P \$0
 1★ PITTSBURGH (-6) over Cleveland L (\$110)
 1★ New Orleans (-3-115) over Tampa Bay L (\$110)
 1★ 6-point teaser GB -0.5 and BAL +8.5-120 L (\$120)
 1★ Kansas City (-3-105) over Buffalo W \$100
 2★ UNDER 10.5 Penalties L (\$220)

POWERS' PICKS

- Best winning % of all newsletters last 6 years!
- Emailed every Wednesday during the season
- Emailed monthly during the off-season
- Write-ups on every single game each week
- ATS Trends • Bad Beats • Misleading Finals
- Major Injuries • CFB Power Ratings on all teams
- Full-season Schedule Logs for every single team
- Computer Projected Lines for Every CFB Game

\$99 order at bradpowerssports.com