

FOLSOM STREET

1,500 Square Feet

EAU CLAIRE, WISCONSIN SPACE AVAILABLE FOR LEASE



High Traffic Location 2523 West Folsom Street, Suite A1

- ♦ **Competitive Rates**
- ♦ **Flexible Use-Retail, Professional Office, Medical**
- ♦ **Clairemont & Folsom Signalized Intersection**
- ♦ **Fast Access to Hwy I94, 312**
- ♦ **Great Visibility**
- ♦ **Attractive Arts & Craft Architecture**
- ♦ **Next to Numerous Customer Generators such as Dollar Tree, Dunkin' Donuts, Menards, Festival Foods West, Holiday Express, Culvers**

For More

Information Contact:

DAVID SANDERS
715-723-2223 Ext 12



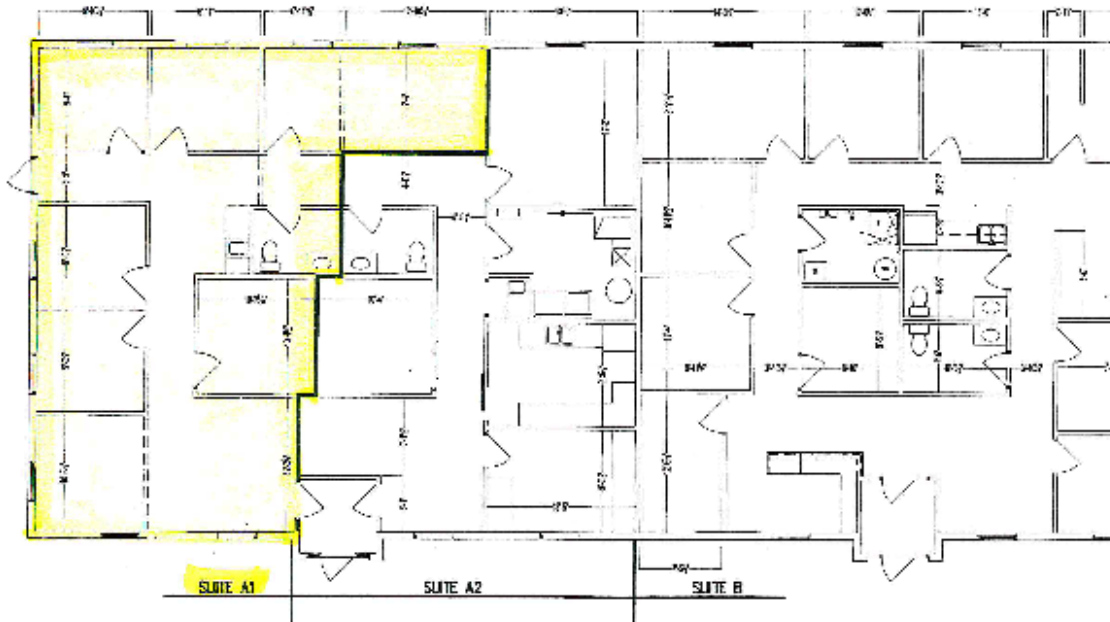
"Your Commercial Real Estate Specialists"

Mid States Development, Inc.
475 Chippewa Mall Dr., Ste. 335
Chippewa Falls, WI 54729

dsanders@midstatesdevelopment.com

www.midstatesdevelopment.com

SPACE AVAILABLE FOR LEASE



Suite A1—Approximately 1,500 Square Feet

CUSTOMER PARKING AT YOUR DOOR

For More Information, Contact:

DAVID SANDERS
715-723-2223 EXT 12

dsanders@midstatesdevelopment.com