



WELCOME TO OUR  
**Monthly Newsletter**

*we're so glad you're here!*

Hello, Supporters and Friends:

As the director of Shenandoah Alliance, one of my biggest struggles is effectively communicating our mission and unique value to potential supporters and funders. How can I convey the full scope of our work, and the impact we make on the community so that we stand out among the many deserving causes vying for limited resources?

I shared this with a friend recently, and he countered simply with, "What if Shenandoah Alliance didn't exist?"

Talk about impact! I challenge you to read this news letter with that in mind.

Shenandoah Alliance was formed in 1989 by many different groups and individuals coming together in partnership to serve households in need. Since then, we continue to nurture those partnerships and to cultivate new ones in order to expand our reach and ability to aid more households.

In this issue, we highlight some of those partnerships. Together we are able to make the greatest impact.

Thank you for being in partnership with us.

*Katie*



**Katie Furneisen**  
Executive Director

# Housing Stability

## Sibert's House Project



## Community Partnership Funds



**BJ Stout-Ritter**  
Housing Stability Counselor

We would like to extend a heartfelt Thank You to The Home Store in New Market for donating flooring to our Scattered Site Graduate.

He continues to be grateful for the support he has received from Shenandoah Alliance and the community and is excited about this new chapter in his life.



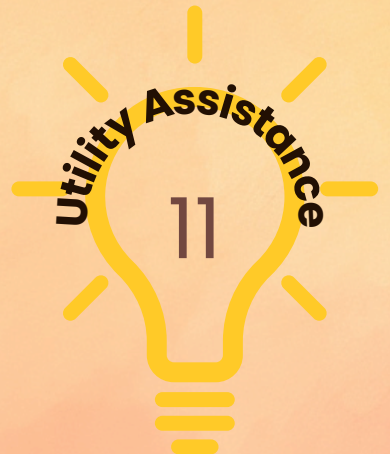
# \$12,334.13

In Financial Assistance provided to **27** Shenandoah County Residents in both Utility & Rent/Mortgage Assistance.

**Fiscal year 2025 (July 2024–June 2025)**

## September 2024

Households Served



Rent & Mortgage Assistance

1

## Partner Organizations & Private Grants:

- Woodstock Ministerial Association
- Strasburg Local Relief
- Maurertown Brethren Church
- Wakeman's Grove
- St. John's Bosco
- Edinburg Ministerial Association
- New Market Presbyterian Church
- St. Mary's Church of the Pine
- Shenandoah Valley Electric Cooperative
- Shenandoah Community Foundation

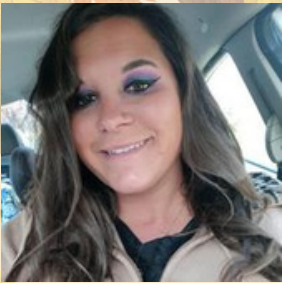
## Salvation Army Funds:

Funds from Shenandoah County Salvation Army Service unit to administer the funds collected in the Red Kettles for utility/rent/mortgage assistance to Shenandoah County residents.

Use the QR Code to Make a Donation to the Virtual Kettle Year Round!



# Housing Corner



**Megan Bly**

Certified Housing Counselor

**New Referrals**

**22**

**Calls this Month**

**293**

Rental Assistance by Grant Funded Projects in the month of September

**\$16,747.32**

Partnerships are the cornerstone of our ability to serve this community. Let's talk about one of those partnerships. We meet monthly with Family Promise to discuss households we are simultaneously working with. During these meetings, we make sure that we are effectively addressing all the households needs and connecting them with all the resources available to them. If you haven't read it yet, check out Family Promise's Newsletter section called 'Success.' They discussed a household that was in their scattered site unit. This consumer also reached out to Centralized Housing Intake and received a referral for Rapid Rehousing Assistance to our agency. When I was assessing this consumer's needs it was apparent that this household would be better suited for Permanent Supportive Housing through Northwestern Community Services Board. I reached out to their housing department on behalf of this consumer and within two weeks he was approved for Permanent Supportive Housing. It doesn't always happen this quickly but we were over the moon excited for this family. With this "voucher" they will be able to live comfortably and not have to stress financially. This was not the effort of one agency, but multiple. It would not have not been possible without collaborations between the Department of Social Services, Family Promise, Northwestern Community Services Board, and of course, the Shenandoah Alliance for Shelter.

**WE ARE SO THANKFUL FOR OUR COMMUNITY PARTNERSHIPS.**

## LIVING WAGE CALCULATOR

learn more at <https://livingwage.mit.edu/counties/51171>

	1 ADULT				2 ADULTS (1 WORKING)				2 ADULTS (BOTH WORKING)			
	0 Children	1 Child	2 Children	3 Children	0 Children	1 Child	2 Children	3 Children	0 Children	1 Child	2 Children	3 Children
Living Wage	\$19.50	\$33.49	\$41.09	\$54.29	\$27.41	\$33.71	\$38.13	\$40.70	\$13.64	\$18.85	\$23.13	\$26.86
Poverty Wage	\$7.24	\$9.83	\$12.41	\$15.00	\$9.83	\$12.41	\$15.00	\$17.59	\$4.91	\$6.21	\$7.50	\$8.79
Minimum Wage	\$12.00	\$12.00	\$12.00	\$12.00	\$12.00	\$12.00	\$12.00	\$12.00	\$12.00	\$12.00	\$12.00	\$12.00

In the depths of my research, I stumbled across this Living Wage Calculator. What is a **living wage**? A living wage is the hourly pay that allows a full-time employee to afford their basic needs without needing additional financial assistance. This data is specific for Shenandoah County. In this chart, you can see the amount of money per hour an individual with no children would need to earn to support themselves. That wage is \$19.50/hour. On the opposite end, two working adults with two children would need to each make at least \$23.13/hour to support their household.

At the Shenandoah Alliance for Shelter the max **gross** income allotted for our VHSP Programs in Shenandoah County, for a household of one, is \$17,100.00, which breaks down to \$8.22/hour. As you can see from the chart, \$19.50/hour is what is needed for a household of one to make it without financial support. Meaning, we serve many people in this community who make \$8.22/hour or less, which is \$11.28 per hour less than what is needed to support themselves in this community without government assistance.

***Without our assistance many of these people, your neighbors, would end up literally homeless or continue to experience homelessness.***

# Centralized Housing Intake: SEPTEMBER

**1036** Total Strength Based Client Interactions

**68** Households Referred to Community Organizations for Assistance

We are excited to announce that we have filled our open CHI position, and will be formally introducing our new staff member in our October Newsletter.

We send loads of heartfelt THANKS to our partners at Mercy House who have been carrying the load of the CHI calls while we were in the hiring process!



If you know someone who is experiencing a housing crisis, please have them call Centralized Housing Intake at 540-271-1701 to complete an eligibility screening.



Learn about the CHI Program here: [continuumofcare513.com](http://continuumofcare513.com)

312  
Housing Calls

5  
Call for  
Housing &  
Utility

20  
Resource  
Connections

42  
Utility Calls

**This month SAS completed 379 unique phone calls, broken down to the left by category.**

**This is a 12% increase in calls from August.**



October

- OCTOBER 3RD: HMIS Refresher Training
- OCTOBER 3RD: Monthly Meeting with Family Promise
- OCTOBER 7TH-9TH: SAS Financial Audit
- OCTOBER 7TH: SAS Board of Directors Executive Committee Meeting
- OCTOBER 7TH: Lion's Club Presentation
- OCTOBER 8TH: Page Alliance for Community Action Meeting
- OCTOBER 8TH: NOFO AD HOC Meeting
- OCTOBER 9TH: Built for Zero Meeting
- OCTOBER 10TH: CoC General Meeting
- OCTOBER 10TH: Lunch & Learn Non-Profit Council Meeting
- OCTOBER 10TH: SAS Board Meeting
- OCTOBER 14TH: OFFICE CLOSED**
- OCTOBER 15TH: CoC Compliance and Evaluation Meeting
- OCTOBER 15TH: CoC Media & Advocacy Meeting
- OCTOBER 17TH-18TH: Housing Virginia's Most Vulnerable Conference
- OCTOBER 21ST: SAS Empty Bowl Meeting
- OCTOBER 29TH: HMIS Refresher Training

## SAVE THE DATE



The **33rd Annual Empty Bowl Soup Supper** will take place from 5:30pm-7:30pm on **Friday, November 22nd.**

**Tickets go on sale Tuesday, October 15th!**

**Check our website and Facebook page for details!**

Stay in Touch



Support SAS with a couple clicks-  
check out our Amazon Wish List!

**SHOP NOW!**

Follow us on Facebook  
for real-time updates.

**(540) 459-3212**  
**[alliance4shelter@gmail.com](mailto:alliance4shelter@gmail.com)**