

RYERSON REALTY LLC

2761 Country Lane Circle
Eagle Grove, IA 50533-0877

Phone 515-448-3079

Fax 515-448-5028

ryerson@goldfieldaccess.net

www.ryersonauctionrealtyltd.com

Deborah D Vance, Broker | **Michael Ryerson, Sales** | **Todd Swalin, Sales**
515-689-3715 | **515-689-3728** | **515-689-8987**

Property Location: Lots 1-6 Rotary Add to Eagle Grove

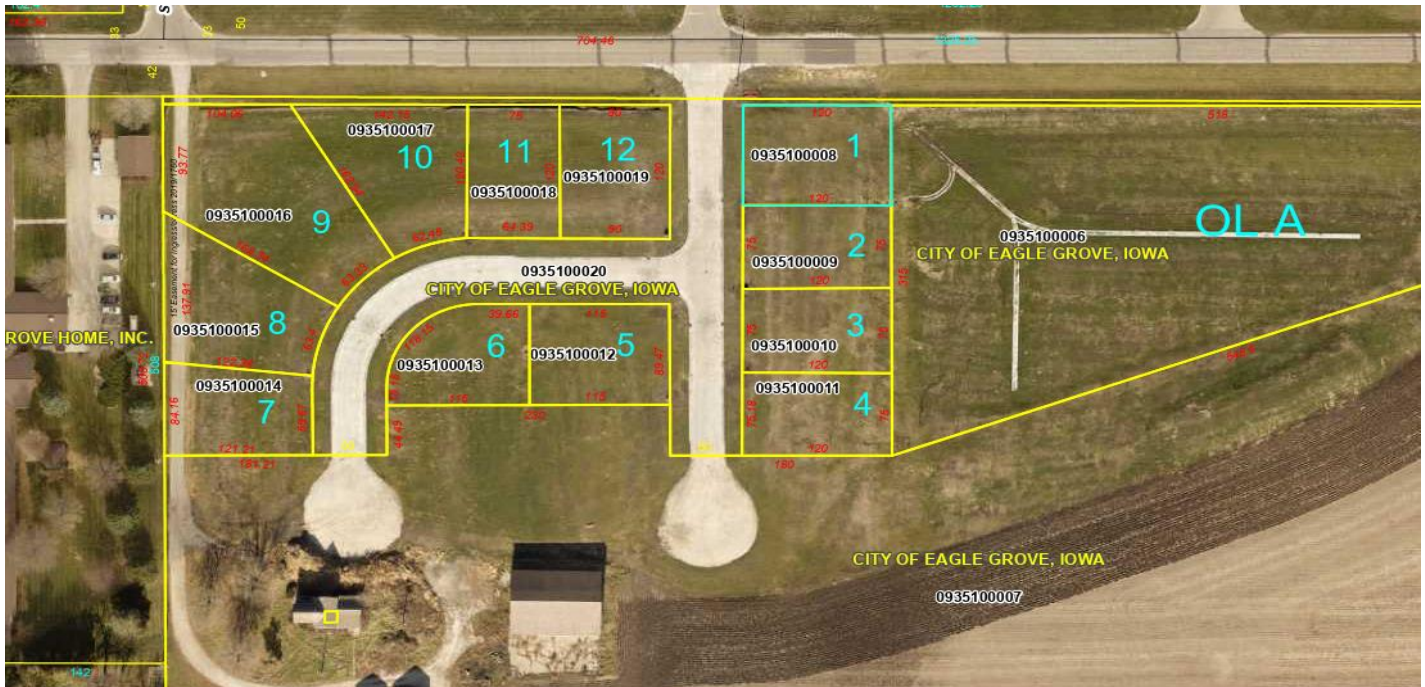
School District: Eagle Grove

Price: \$15,000 / per lot

Terms of Sale/Possession: Cash/Upon Final Settlement

Real Estate Taxes are \$ 8.00 per year.

City Attorney will do the closing.



The following information, although believed to be accurate, is not guaranteed to be so. Buyer should do his own inspections. We assume no liability. The measurements are estimates only. This info is subject to change without notice. The seller does not warrant appliances past day of listing. The greatest compliment we can receive is a personal referral, please tell your friends about us.