

POWERS' RATINGS

Volume 2 Issue 7

October 10-14, 2024

© 2024 BP Sports, LLC

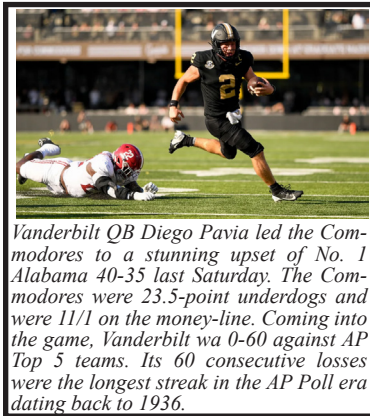
Powers' Ratings Computer Plays in CFB 494-430-14 (53%) All-Time 2016-2024

Week 6 News and Notes!

For those of you that are new, in this section we'll recap what happened last week specifically, the misleading finals, the key injuries, the bad beats and the line moves. We'll include most of these recaps here, therefore you don't have to waste time reading about them in my game-by-game write-ups for the upcoming week. Without further adieu, here's a run down of what happened last week in the world of CFB.

Week 6 Trends

Favorites-Dogs	
Straight Up	36-13
ATS	22-24-3
Home-Away	
Straight Up	28-21
ATS	24-22-3
Totals (O/U)	
Over-Under	26-23
Season To-Date	
Favorites-Dogs	
Straight Up	326-84
ATS	195-204-8
Home-Away	
Straight Up	247-101
ATS	164-175-6
Totals (O/U)	
Over-Under	197-204-6



Vanderbilt QB Diego Pavia led the Commodores to a stunning upset of No. 1 Alabama 40-35 last Saturday. The Commodores were 23.5-point underdogs and were 11/1 on the money-line. Coming into the game, Vanderbilt was 0-60 against AP Top 5 teams. Its 60 consecutive losses were the longest streak in the AP Poll era dating back to 1936.

Largest Favorites to Cover:
Boise State (-28) vs Utah State, 62-30

Biggest Money line Upsets:

Vanderbilt +1100 won 40-35 vs Alabama (+23.5)
Houston +550 won 30-19 at TCU (+16.5)
UL-Monroe +510 won 21-19 vs James Madison (+16)
Arkansas +415 won 19-14 vs Tennessee (+14)
Charlotte +265 won 55-24 vs East Carolina (+9.5)
Minnesota +250 won 24-17 vs USC (+8.5)

5-0 ATS teams with margin per game:

BYU	16.4
Army	16.1
Pittsburgh	10.5
Eastern Michigan	8.5
Marshall	7.1

5-1 ATS teams with margin per game:

Tulane	15.3
Indiana	12.2
Sam Houston	10.2
Ole Miss	8.1
Arkansas	7

0-6 ATS teams with margin per game:

Kansas	-7.3
--------	------

0-5 ATS teams with margin per game:

Air Force	-14.3
Kent State	-13

0-5-1 ATS teams with margin per game:

NC State	-12.3
North Carolina	-7.6

5-0 teams to the OVER:

Ball State	18.8
Navy	17.4
Boise State	16.6
Vanderbilt	13.6

5-0-1 teams to the OVER:

Miami, FL	9.5
-----------	-----

5-1 teams to the OVER:

Indiana	13.2
---------	------

6-0 teams to the UNDER:

Houston	14.6
---------	------

5-1 teams to the UNDER:

Florida State	9.5
Ole Miss	8.8
Washington	8.3
Nebraska	7.7
Michigan State	7.3
Boston College	6.3

Misleading Finals

Connecticut (-17.5) beat Temple 29-20. However, the Huskies got a 96-yard fumble return TD on tjehe final play of the game when Temple was trying to score and win the game. It also impacted some totals players (closed 49 at some books).

Texas Tech (+6) upset Arizona 28-22. However, Arizona had a 422-331 yard edge in the game. Arizona settled for 6 FG's (missing 1) and had 3 TO's.

UL-Monroe (+16) upset James Madison 21-19. However, James Madison had a 399-257 yard edge. An 82-yard fumble return TD by ULM was a key play.

Marshall (-3) beat Appalachian State 52-37. However, App State had a 473-365 yard edge but were -2 in TO's.

Virginia (-2) beat Boston College 24-14. UVA trailed 14-0 but were +3 in TO's including a 40-yard fumble return TD.

Wake Forest (+4) upset NC State 34-30. However, NC State had 419-315 yard and 5.5-5.0 yards per play edges.

Oregon State (-10) beat Colorado State 39-31 in 2OT. However, Colorado State had a 439-238 yard edge and also a 6.4-5.3 yards per play edge.

Arkansas State (+2.5) beat South Alabama 18-16. However, South Alabama had 453-311 and 6.6-6.0 yards per play edges

Bad Beats

Oregon (-22) beat Michigan State 31-10. Michigan State elected to kick a 42-yard FG with :25 left to get the cover.

The Missouri/Texas A&M total opened 49.5 and closed 47.5. With Texas A&M leading 41-7, Missouri elected to kick a FG and made it with just :08 left. That killed anyone that bet the UNDER.

Miami (-10) beat California 39-38. California was +300 on the money-line and led the game 38-18 in the fourth quarter before a big Miami rally.

Injuries/Personnel News

- East Carolina QB Jake Garcia was benched in the loss to Charlotte last week.
- Florida State QB DJ Uiagalelei is out several weeks.
- Michigan QB Jack Tuttle is likely the starting QB for Michigan moving forward.
- NC State QB Grayson McCall is in concussion protocol.
- Ole Miss WR Tre Harris leads the nation in receiving with 895 yards. He is questionable at best for this week's game at LSU.
- Penn State RB Nicholas Singleton is "very confident" he'll play vs USC this week.
- South Florida QB Byrum Brown is "day-to-day" for this week's game vs Memphis.
- The Memphis/USF game has been rescheduled from Friday to Saturday due to Hurricane Milton. We think there's a good chance it doesn't get played.
- Texas QB Quinn Ewers is likely to start this week's game vs Oklahoma.
- UAB QB Jacob Zeno did not play vs Tulane last week and is ? this week.
- Utah QB Cam Rising "might play" this Friday at Arizona State.

Brad Powers' Radio/TV/Podcast Weekly Schedule This Fall

Mon 12:15pm ET. Early best bets with Joe Osborne @Covers on Twitter/YouTube
Mon 4:00pm ET. General sports betting talk with Greg Pogue @NashSportsRadio
Mon 5:00pm ET. Weekend recap with Joey Knish @HitTheBooks on YouTube
Tue 10:20am ET. JB and the General show @NashSportsRadio
Wed 1:00pm ET Bet The Board Podcast. A deep dive podcast into the biggest CFB games of the week with Payne Insider and Todd Fuhrman.
Wed 7:30pm ET. @VSiNLive Primetime with Tim Murray
Thur 12:00pm ET Weekly CFB Topics with Rico Bosco on Barstool @PicksCentral
Thur 1:40pm ET Overtime with Bert Remien @ESPNSiouxFalls
Thur 5:00pm ET. Previewing Alabama with Ryan Fowler on @tide1009
Thur 5:45pm ET @VSiNLive Follow the Money w/Mitch Moss and Pauly Howard.
Thur 7:45pm ET. Weekend preview with Steve Cofield on @espnlasvegas
Thur 9:25pm ET. Run down of every game with Ken Thomson on @kdwLnLasVegas
Fri 9:00am ET. Weekend preview on Bill King show @NashSportsRadio
Fri 12:15pm ET. Big game bets with Joe Osborne @Covers on Twitter/YouTube.
Fri 5:00pm ET. Weekend preview with Joey Knish @HitTheBooks on YouTube
Sat: Previewing WVU with Brad Howe/Hoppy Kercheval @WVMetroNews @ indicates the Twitter handle.

Recapping Week 6 Best Bets

Our power ratings plays went 0-2 in week six. Those are the plays that are 3 points or more off the Vegas lines. They are 54% all-time with a 900-game sample size the last 9 years. VIP customers are off to a 30-22-1 start to the season (see below).

VIP Records:

NFL Plays: 4-7-1 -4.45 units (CLV 2-0-10 +0.08 ppg)
FBS vs FBS Plays: 26-11 +13.9 units (CLV 18-12-7 +0.49 ppg)
FBS vs FCS Plays: 0-3 -3.4 units (CLV 3-0 +3.2 ppg)
FCS vs FCS Plays: 0-1 -1.1 units (CLV 1-0 +6.0 ppg)
Overall: 30-22-1 +4.95 units (CLV 24-12-17 +0.63 ppg)
FBS Leans: 14-17-2
FCS Leans: 1-0
NFL Regular Season Leans: 29-19
Teaser Legs: 13-7
NFL Preseason Leans: 6-5

Personal Bets (ones listed on the Sunday VIP updates, Saturday FCS VIP updates and Game of Years in the CFB Preview):

FBS vs FBS: 177-140-10 (CLV 239-59-29 +2.09 ppg)
FBS vs FCS: 46-19-1 (CLV 59-5-2 +3.17 ppg)
FCS vs FCS: 65-49 (CLV 101-2-11 +3.25 ppg)
Overall: 288-208-11 (CLV 399-66-42 +2.49 ppg)
Note: CLV = Closing Line Value

CFB and NFL Schedules with Vegas and Brad Powers Lines Week 7 October 10-14

Wednesday, Oct 9th					Saturday, Oct 12th				
	Time/TV	Open	Current	BP		Time/TV	Open	Current	BP
103 New Mexico State	7:30	57.5	58.5	61	171 Kansas State	10:15	-4	-4	-4
104 Jacksonville State	ESPN2	-18	-21.5	-19	172 Colorado	ESPN	54.5	56.5	56
Thursday, Oct 10th					Sunday, Oct 13th				
	Time/TV	Open	Current	BP		Time/TV	Open	Current	BP
105 San Francisco	8:15	-3.5	-3.5	-3	263 Jacksonville	9:30a	42	45	-1
106 Seattle	Prime	48	49	47	264 Chicago	NFLN	-1	-2	45
107 Coastal Carolina	7:30	55.5	61	59	265 Washington	1:00	49.5	51.5	54
108 James Madison	ESPN2	-10	-9.5	-11	266 Baltimore	CBS	-7	-6.5	-6
109 Middle Tennessee	8:00	48.5	49	48	267 Arizona	1:00	49.5	47.5	48
110 Louisiana Tech	CBSSN	-6	-4.5	-6	268 Green Bay	FOX	-5.5	-5	-6
111 UTEP	8:00	55.5	57	54	269 Houston	1:00	-6	-7	-9
112 Western Kentucky	ESPNU	-18	-19.5	-18	270 New England	CBS	40.5	38	37
Friday, Oct 11th					Monday, Oct 14th				
	Time/TV	Open	Current	BP		Time/TV	Open	Current	BP
115 Northwestern	8:00	43.5	45.5	48	287 Buffalo	8:15	-1.5	-2.5	-1
116 Maryland	FOX	-12	-10.5	-8	288 N.Y. Jets	ESPN	44	41	41
117 UNLV	9:00	-17	-19	-17					
118 Utah State	CBSSN	64.5	65.5	63					
119 Utah	10:30	-5	-6.5	-7					
120 Arizona State	ESPN	45.5	45	49					
121 Miami, OH	2:00	-4	-2.5	-4					
122 Eastern Michigan	ESPN+	45.5	46.5	46					
123 Iowa State	8:00	-3	-3	-2					
124 West Virginia	FOX	49.5	53	54					
125 Marshall	8:00	-1	-1.5	-1					
126 Georgia Southern	ESPNU	67.5	61.5	61					
127 California	3:30	57.5	58.5	61					
128 Pittsburgh	ESPN	-3	-3.5	-5					
129 Vanderbilt	7:45	42.5	46	46					
130 Kentucky	SECN	-10	-13.5	-14					
131 Syracuse	8:00	-3	-5	-3					
132 NC State	ACCN	54.5	54	59					
133 Missouri	12:00	-28	-27.5	-29					
134 Massachusetts	ESPN2	55.5	54.5	51					
135 Northern Illinois	3:30	47.5	48	48					
136 Bowling Green	ESPN+	-2	-2.5	-2					
137 Akron	3:30	53.5	52	55					
138 Western Michigan	ESPN+	-11	-9.5	-13					
139 Louisville	3:30	-9	-7.5	-8					
140 Virginia	ACCN	56.5	54.5	54					
141 Florida	7:00	55.5	55.5	57					
142 Tennessee	ESPN	-17	-15.5	-17					
143 Old Dominion	3:30	51.5	55.5	55					
144 Georgia State	ESPN+	-4	-1.5	-1					
145 Ball State	12:00	-10	-6.5	-7					
146 Kent State	ESPN+	55.5	59.5	61					
147 Clemson	12:00	-23	-20	-18					
148 Wake Forest	ESPN	55.5	60.5	62					
149 Mississippi State	4:15	51.5	53.5	50					
150 Georgia	SECN	-34	-34	-34					
151 Cincinnati	3:30	58.5	58.5	58					
152 Central Florida	ESPN2	-3	-3	-6					
153 Ohio	4:00	45.5	-3	49					
154 Central Michigan	ESPNU	-1	49	-1					
155 Toledo	12:00	-10	-9.5	-9					
156 Buffalo	ESPNU	44.5	44.5	47					
157 North Texas	7:00	-8	-6.5	-6					
158 Florida Atlantic	ESPN2	60.5	58.5	60					
159 UTSA	7:00	-5	-5.5	-6					
160 Rice	ESPN+	43.5	50.5	52					
161 Georgia Tech	12:00	-4	-5.5	-4					
162 North Carolina	CW	55.5	59	58					
163 UAB	12:00	55.5	55	54					
164 Army	CBSSN	-21	-26.5	-22					
165 Southern Miss	5:00	44.5	41.5	44					
166 UL-Monroe	ESPN+	-10	-6.5	-6					
167 Purdue	3:30	50.5	49.5	48					
168 Illinois	FS1	-18	-18.5	-18					
169 Wisconsin	12:00	38.5	41	44					
170 Rutgers	BTN	-3	-2.5	-2					

Games in Rotation Order
Wednesday, October 9th

HOME TEAM IN CAPS

JACKSONVILLE STATE 40 New Mexico State 21. Jacksonville State has finally looked like the team we expected the last couple of games off back-to-back blowouts. New Mexico State is No. 131 in ypp and No. 132 in ypg margins. We're not wild about the side here but do lean OVER with Jacksonville St running thr 8th fastest pace.

Thursday, October 10th

JAMES MADISON 35 Coastal Carolina 24. JMU is off the big upset loss to ULM where they were 16-point favorites. JMU did have a 399-257 yard edge. Coastal has exceeded expectations so far this season but this is a tough task traveling on a short week vs a better team angry off an upset loss.

LOUISIANA TECH 27 Middle Tennessee 21. While Middle Tennessee has played the much tougher schedule (No. 42 vs No. 141), Louisiana Tech's ypp margin (+0.3) is much better than MT (-1.6). MT has a 1st-year coach while LT's Cumbie desperately needs a win in year 3. We bet LT on the open and still lean that way.

WESTERN KENTUCKY 36 Utop 18. UTEP is one of 3 teams to not win a game this season so far. They're a little more respectable than the other two (Kennesaw, Kent St) but are still No. 118 in ypp margin. WKU, despite a winning record is -0.6 in ypp margin this year. We haven't bet the game. The OVER is getting money as both are in the Top 25 in plays per minute.

Friday, October 11th

MARYLAND 28 Northwestern 20. Two teams that desperately need their first conference win of the season. The Terps are off a bye and are the better team statistically (+0.6 vs -0.6 in ypp margin). However, we prefer to take the "doubles" with Northwestern who was more feisty than the final vs Indiana (trailed 27-24 mid-4Q). Lean dog and OVER.

Unlv 40 UTAH STATE 23. How will UNLV respond after the heart-breaking OT loss to Syracuse last week? Utah State has only one win but has played the tougher schedule (No. 32 vs No. 75) and have an offense that ranks No. 37 in ypp and ypg. This is the largest away favorite role for UNLV in their history (2-3 SU/ATS as double-digit road favorite). We lean with the home dog.

Utah 28 ARIZONA STATE 21. The expectation is we could see the return of Utah QB Cam Rising here but we won't hold our breathe. Utah is off a bye after an upset home loss to Arizona. We like the spot here for them vs an Arizona State team that has 3 wins by one possession or less and a lot of their schedule so far has disappointed (Wyoming, Miss St, Kansas). We leans OVER at the current numbers.

Saturday, October 12th

Miami, OH 25 EASTERN MICHIGAN 21. EMU is 5-0 ATS so far this season with an average cover of 8.5 ppg. They come in off a bye. The two teams are both -0.7 in ypp margin but the difference is this week's biggest strength of schedule disparity as Miami has played the No. 34 schedule, while EMU has played the No. 163 (including FCS).

Iowa State 28 WEST VIRGINIA 26. Iowa State's pass offense should have the edge vs a WVU defense that has a No. 126 coverage grade. However, keep an eye on this WVU team that was 2-2, but scored a couple of TD's late to beat Kansas. Last week, after a bye, they destroyed Oklahoma State outgaining them by 330 yards. We lean home dog and the OVER.

Marshall 31 GEORGIA SOUTHERN 30. Big game in the Sun Belt with the winner staying atop the East division. Marshall is the much better team in the stats (+0.5 in ypp margin vs -2.2). However, the spot says Georgia Southern off a bye. We're passing at the current numbers.

PITTSBURGH 33 California 28. We like Pitt in this matchup. The Panthers are the far superior team in the stats (+2.7 ypp margin vs +0.7). They're also catching Cal off one of their biggest home games ever. It was Heartbreak Hotel as the Bears blew a 25-point second half leads vs Miami.

KENTUCKY 30 Vanderbilt 16. Best spot of the week has to belong to Kentucky here who comes in off a bye after 3 straight impressive covers. They're catching Vanderbilt off their biggest win in school history. Prior to last week, Vandy was 0-60 vs AP Top 5 teams but they shocked No. 1 Alabama 40-35 as 23.5-point underdogs. Their offense held the ball for 42 minutes but will find things tougher vs this UK defense that ranks No. 5 in total D. We bet UK but value as been lost.

Syracuse 31 NC STATE 28. Syracuse is 4-1 after their upset win at UNLV and find themselves road favorites here. In the summer, they would have been double-digit underdogs. NC State is 0-5-1 ATS on the season failing to cover by 12.3 ppg. Their defense is allowing 33.7 ppg and they're playing freshman QB. We lean OVER.

Missouri 40 MASSACHUSETTS 11. Missouri was exposed last week in their first road game of the season. You'd think they would be angry but this might be the weirdest road trip of the entire CFB season with an SEC team traveling to Amherst, MA. Our numbers like Missouri and the UNDER but we haven't gotten to the window.

BOWLING GREEN 25 Northern Illinois 23. Huge game in the MAC for both teams who have suffered losses this season as double-digit favorites. NIU is the better team in the stats (+1.3 ypp margin vs +0.1) but BG has played the tougher schedule (No. 100 vs No. 148). Both teams are a little banged up but we lean with NIU.

WESTERN MICHIGAN 34 Akron 21. WMU is the better team in the stats (-0.1 ypp margin vs -1.9). Akron did play Bowling Green tough in a 7-point loss last week while WMU didn't cover in a shoot-out win vs Ball State. However, our power ratings like WMU here.

Louisville 31 VIRGINIA 23. Louisville is off back-to-back losses. The Cardinals have played the tougher schedule (No. 35 vs No. 73) and are the better team in the stats (+2.1 in ypp margin vs +0.6). UVA's 10-point win vs BC was a bit misleading last week as they were +3 in TO's and scored the game's final 24 points. We bet Louisville.

TENNESSEE 37 Florida 20. We like catching Tennessee off the shocking upset loss to Arkansas last week as 2-TD favorites. The Vols are still No. 4 in ypp margin and No. 3 in ppg margin. They're playing a Florida team that had a good win vs UCF last week. The problem is when they've faced Top 15 Miami and Texas A&M this year, they were easily out-classed and both those games were at home. Do note that Florida is on a 17-2 SU/14-5 ATS run in the series.

GEORGIA STATE 28 Old Dominion 27. Georgia State has already had two byes this season. How much has that disrupted them under a first-year coach? They are the slightly better team in the stats (-0.5 in ypp margin vs -0.7). We haven't bet the game.

BALL STATE 34 Kent State 27. Stats wise these are the two worst teams in the FBS this year. Ball State is -3.5 in ypp margin (No. 133) while Kent State is -3.6 (No. 134). Ball State's offense is the most proven unit vs weaker competition. We lean OVER which is 5-0 in Ball State games this year by 18.8 ppg.

Clemson 40 WAKE FOREST 22. Clemson has won 4 straight since the opening season loss to Georgia. The Tigers rank in the Top 20 in offensive ypp, ypg and ppg. Wake is running the 10th fastest tempo in the country but their defense is allowing 460 ypg. We like the OVER.

GEORGIA 42 Mississippi State 8. Georgia is off Alabama and Auburn with Texas on deck. Mississippi State is off a bye and they played Texas tough prior to it (trailed 14-6 late 3Q). UGA did have another player arrest this week and we didn't like their look vs Auburn. With that said, we prefer the UNDER at the current numbers.

CENTRAL FLORIDA 32 Cincinnati 26. UCF has been incredibly disappointing the last two weeks losing to Colorado and Florida by a combined 72-34 despite being favored in both. They have played the tougher schedule (No. 43 vs No. 55) and are slightly better in ypp margin (+1.1 vs +0.8). Our power ratings like them here but we haven't gotten to the window yet.

CENTRAL MICHIGAN 25 Ohio 24. There's something weird going on if you've been following line movement in CMU games this year. There's been significant money against them weekly despite "so-so" results. The Chips are slightly better in the stats (+0.8 in ypp margin vs +0.6 and +76 ypg vs +28 ypg) but find themselves a 3-point home underdog? We bet CMU +3 on the open thinking wrong team favored.

Toledo 28 BUFFALO 19. Toledo is better than we anticipated this season as they were one of the least experienced teams in the country but we now have them the favorites in the MAC. Buffalo is off a bye but their offense ranks No. 129 in ypp and ypg. We lean OVER.

North Texas 33 FLORIDA ATLANTIC 27. Both teams come in off a bye. North Texas has been the far more impressive team with the No. 8 offense averaging 512 ypg and 40.8 ppg (No. 14). They are +1.7 in ypp margin while FAU is -0.1. With that said, our numbers did call for a bet on the side and total yet.

Utah 29 RICE 23. Both teams have really disappointed so far this season as they are a combined 2-8 ATS. Our numbers like UTSA on the open and the market has agreed. There has been some value lost. However, we still lean OVER the total even after a big line move.

Georgia Tech 31 NORTH CAROLINA 27. North Carolina has lost 3 straight games and have not covered a single game this season at 0-5-1 ATS failing to cover by 7.6 ppg. However, we think you're starting to pay a premium if you want to fade them. We have Pitt and GT power-rated similarly. Pitt was -2.5 at NC last week and now GT is favored by 5.5. We're passing.

ARMY 38 Uab 16. Our power ratings are just not built for a game like this that would have been a pick-em before the season. We've downgraded UAB 12 points since the start of the season and they definitely looked like they waved the white flag last week allowing 71 points to Tulane. Meanwhile, we've upgraded Army 10 points as they are 5-0 ATS covering by 16.6 ppg. We bet Army -20 on the openers knowing they would take huge money this week but can't get their at the current huge 26.5 number.

UL-MONROE 25 Southern Miss 19. ULM's season win total opened 1.5 at Fan Duel back in February. ULM already has 4 wins and have pulled 3 upsets as a TD dog or more highlighted by last week's 21-19 win over James Madison as 16-point underdogs. This is a program thinking bowl game as they've only been to one in their history. However, can they handle success and do you want to lay points with them as they run the 2nd slowest tempo in CFB?

ILLINOIS 33 Purdue 15. Purdue looks like they have quit starting with the 66-7 loss to Notre Dame in week 3. Last week they lost 52-6 at Wisconsin and they were still taking money in the market late in the week. However, we think you might be paying a premium now. Last week Purdue was +11.5 at Wisconsin, now they're +19.5 at Illinois. On a neutral field, is Illinois 8 points better than Wisconsin? No way, we'd have a monster bet on Illinois.

RUTGERS 23 Wisconsin 21. Wisconsin is off a much-needed blow-out win over Purdue. It was their first cover of the season. Meanwhile, Rutgers lost their first game last week 14-7 at Nebraska. Our ratings actually lean OVER here. There's been some shenanigans in Rutgers games the last two weeks as Washington should have scored 10 or more points vs them and last week's game at Nebraska was played in 40 mph wind.

Kansas State 30 COLORADO 26. After what should be a great afternoon and evening of CFB, we get a great late-night matchup here in the Big 12. Kansas State is the better team in the stats (+1.5 vs +0.6) and has played the tougher schedule (No. 12 vs No. 19). However, QB Avery Johnson has struggled on the road and Kansas State has struggled with their pass rush. If they can't get to Colorado QB Shedeur Sanders, we're not sure they have the athletes to cover CU's receivers in space. With that being said, we haven't bet side or total yet.

NEW MEXICO 30 Air Force 24. Air Force is 0-5 ATS this year failing to cover by 14.3 ppg. New Mexco comes in off the bye having extra time to prep for the option and Mendenhall has familiarity with defending it dating back to his BYU days. We bet New Mexico early in the week but this line has been on the move.

San Jose State 28 COLORADO STATE 27. San Jose State has really impressed so far this season at 4-1 SU and ATS under first-year coach Ken Niumatalolo. Their only loss is in 2OT's at Washington State. They are the better team in the stats (+1.2 ypp margin vs -0.4) but Colorado State has played the tougher schedule. (No. 64 vs No. 139).

BYU 27 Arizona 24. BYU is 5-0 SU and 5-0 ATS this season covering by 16.4 ppg. They come in off a bye. Arizona is off a misleading loss to Texas Tech last week where they settled for 6 FG attempts and also had 3 TO's. BYU is slightly better in the stats (+1.6 ypp vs +1.4) but we can't get to this high of spread. We lean with Arizona who traveled to the state of Utah two weeks ago and pulled a shocker.

Washington State 33 FRESNO STATE 30. Both teams come in off a bye. Washington St is better in ypp margin (+0.7 vs +0.3) and has played the tougher schedule (No. 33 vs No. 98). They have the No. 10 offense averaging 495 ypg but their defense is No. 127 allowing 469 ypg. We haven't bet side or total here.

ALABAMA 37 South Carolina 17. What will Alabama's frame of mind be here? After the highest of highs beating Georgia two weeks ago to the lowest of lows losing to Vanderbilt for the first time in 40 years last week. If Kalen DeBoer didn't know Alabama faithful are different, he does now. Alabama's offense is still great averaging 7.8 yards per play (No. 4) but you can make a case South Carolina has the better defense (allowing 40 ypg less). We bet OVER.

NOTRE DAME 36 Stanford 12. Notre Dame head coach Marcus Freeman is 8-0 ATS with extra time to prep (bowls, off byes, season openers) covering by 14 ppg. Meanwhile, Stanford is making their 3rd long road trip in 4 weeks here (at Cuse and at Clemson already). It does look like QB Daniels will be back for this game. We bet ND on the openers but are passing now.

† **Texas 32 Oklahoma 18.** @Cotton Bowl in Dallas, TX. Largest favorite in the series for Texas since 2005. Which just so happens to be the last time they won the National Title and this is arguably their best team since at least 2009. The Horns are in the Top 5 in ypp, ypg and ppg margins. Meanwhile, OU is 4-1 on the season but the Sooners

have a -0.1 ypp margin (No. 90) and are -26.4 ypg (No. 97). They have cluster injuries at WR. We like QB Hawkins future but this is a really tall task here.

Ole Miss 31 LSU 28. If all things were equal here and we'd have both teams on same rest, same health and at a neutral site, we'd love Ole Miss. The Rebels are No. 1 in ypp margin and No. 1 in ypg margin. LSU ranks only No. 43 and No. 30 in those categories. However, Ole Miss is playing a 7th straight week and 3rd straight conference game. LSU is off a bye. Ole Miss WR Tre Harris who leads the nation in receiving might not play. LSU has developed a pass rush recently and has found a RB in freshman Durham. We're passing on the side but do like UNDER which is 5-1 this year in Ole Miss games.

UL-Lafayette 37 Appalachian State 27. App State has been impacted by Hurricane Helene off the field. On the field, their defense ranks No. 129 in ypp and No. 129 in ppg allowed. They're facing a solid ULL team that has only lost to Tulane and ranks No. 16 in ypp margin at +155.0. We're not involved on side or total.

San Diego State 23 WYOMING 22. San Diego State got a conference win last week vs Hawaii and have an opportunity to pick up another here. The Aztecs are just -0.1 in ypp margin while Wyoming is -2.2. Some groups have jumped in on San Diego State this week, but we're not one of them.

TEXAS STATE 37 Arkansas State 24. Arkansas State is a fraudulent 3-2 team that is -1.9 in ypp margin (No. 126) and has been outgained by 89 ypg (No. 115). Texas State, who is also 3-2, is +1.6 in ypp margin and outgaining their opponents by 120 ypg. They've lost two games by a combined 4 points where they've blown double-digit leads. We thought we'd love them here, but the line is pricey.

Minnesota 24 UCLA 20. This is not a good spot for Minnesota playing a 7th straight week, flying across the country and off a "storm field" upset win over USC last week. They're playing a UCLA team that has covered 3 straight games albeit all as a big underdog. The Bruins have played the toughest schedule in the country so far and are taking a step down. Our ratings like Minny, the handicap screams UCLA.

Ohio State 28 OREGON 24. The Buckeyes have moved to No. 1 in our power ratings (see next page). Their defense ranks No. 1 in ypp, ypg and ppg allowed. They have the best set of RB's and WR's in the country. QB Will Howard is playing well. The OL is better than expected. The problem is they have played the No. 97 schedule and are taking a large step up in class here. Oregon has had an up and down season so far. They are No. 17 in ypp and No. 9 in ypg margin. Their OL has played better as of late. We haven't bet it yet this week but we'd be interested in the Buckeyes at -3 or less.

IOWA 22 Washington 19. Washington is the much better team in the stats as they are +2.9 in ypp margin and +206.7 in ypg margin while Iowa is +0.6 and +62.8. The spot says Iowa though as they come in off a blowout loss to Ohio State while Washington is off the big win over Michigan. We lean Iowa at -2.5.

Oregon State 27 NEVADA 23. The market is not high on this Oregon State team. Despite a schedule that ranks No. 113, the Beavers are -0.6 in ypp margin (No. 105). Meanwhile, Nevada is +0.0 in ypp margin despite playing the No. 72 schedule. A lot of money is expected to come in on Nevada here. We bet it at open and feel it has already moved too much.

Penn State 27 USC 23. USC's defense is improved. They're allowing 16 ppg less and 117 ypg less than last season. However, against Michigan and Minnesota when everyone in the stadium knew those teams would run the ball in the 4Q, the Trojans couldn't stop it. On the other side, can they protect QB Miller Moss? Penn State should get back RB Singleton this week. After rushing for 251 ypg the first 4 games, without Singleton, the Nittany Lions only had 85 yards last week vs UCLA. With all that said, USC has played the tougher schedule (No. 4 vs No. 80) and our power ratings lean with them.

Boise State 41 HAWAII 23. Boise games are 5-0 to the OVER this year by 16.6 ppg. Their games are averaging 81 total ppg. RB Ashton Jeanty is now the Heisman favorite! However, their defense is allowing 403 ypg (No. 103). Hawaii's defensive numbers look good but they haven't faced any offenses anywhere near as good as Boise so far. Right now, we like OVER as one of our favorite bets.

Memphis 34 SOUTH FLORIDA 25. This game was moved from Friday night due to Hurricane Milton and we're still not sure it will be played even at this date. We like Memphis due to the fact, USF's practice schedule will be impacted this week by the storm and more importantly we think USF QB Byrum Brown is more doubtful to play rather than questionable.

2024 College Football Power Ratings (Vegas Ratings Not AP Poll Style)

Rk	School	Start	Now	+/-	Rk	School	Start	Now	+/-	Rk	School	Start	Now	+/-
1.	Ohio State	92.52	94.52	+2.0	51.	Memphis	70.10	70.10	0.0	101.	Colorado State	57.68	55.68	-2.0
2.	Texas	88.21	91.71	+3.5	52.	Minnesota	68.38	69.88	+1.5	102.	Arkansas State	58.85	55.35	-3.5
3.	Georgia	95.11	91.61	-3.5	53.	Syracuse	66.79	69.29	+2.5	103.	Georgia Southern	56.30	55.30	-1.0
4.	Alabama	88.72	88.22	-0.5	54.	Arizona State	64.52	69.02	+4.5	104.	Hawaii	54.47	54.97	+0.5
5.	Oregon	90.42	87.92	-2.5	55.	Maryland	70.91	68.91	-2.0	105.	Western Michigan	55.66	54.16	-1.5
6.	Ole Miss	86.00	87.50	+1.5	56.	Cincinnati	67.65	68.65	+1.0	106.	Ohio	52.65	53.65	+1.0
7.	Tennessee	81.29	86.79	+5.5	57.	Virginia	65.86	68.36	+2.5	107.	San Diego State	57.35	53.35	-4.0
8.	Penn State	85.96	85.46	-0.5	58.	Washington State	65.98	67.98	+2.0	108.	Georgia State	52.20	53.20	+1.0
9.	Miami (FL)	79.74	83.24	+3.5	59.	Baylor	69.72	67.72	-2.0	109.	New Mexico	46.48	52.98	+6.5
10.	Clemson	81.81	82.81	+1.0	60.	Boston College	64.96	67.46	+2.5	110.	UL-Monroe	43.76	52.76	+9.0
11.	Notre Dame	85.69	82.69	-3.0	61.	Michigan State	64.80	67.30	+2.5	111.	Florida Atlantic	55.84	52.34	-3.5
12.	Texas A&M	82.20	80.70	-1.5	62.	Vanderbilt	58.29	67.29	+9.0	112.	Central Michigan	52.77	52.27	-0.5
13.	LSU	84.83	80.33	-4.5	63.	Texas State	63.41	66.41	+3.0	113.	Rice	59.39	51.89	-7.5
14.	Iowa State	76.43	79.93	+3.5	64.	James Madison	63.14	66.14	+3.0	114.	Eastern Michigan	47.61	51.61	+4.0
15.	USC	78.07	79.57	+1.5	65.	Duke	65.42	65.42	0.0	115.	Utah State	56.44	51.44	-5.0
16.	Kansas State	79.78	78.28	-1.5	66.	North Carolina	71.90	65.40	-6.5	116.	Charlotte	52.31	51.31	-1.0
17.	Utah	79.40	77.40	-2.0	67.	Florida State	82.19	65.19	-17.0	117.	Louisiana Tech	48.66	50.66	+2.0
18.	Kentucky	76.16	77.16	+1.0	68.	Army	54.91	64.91	+10.0	118.	Troy	59.28	50.28	-9.0
19.	Louisville	76.62	77.12	+0.5	69.	UL-Lafayette	62.01	64.51	+2.5	119.	Buffalo	49.03	50.03	+1.0
20.	Indiana	65.47	76.97	+11.5	70.	Houston	62.42	64.42	+2.0	120.	Wyoming	60.13	49.63	-10.5
21.	SMU	75.80	76.80	+1.0	71.	Liberty	68.78	64.28	-4.5	121.	Air Force	60.05	49.05	-11.0
22.	Oklahoma	84.15	76.65	-7.5	72.	Oregon State	67.06	63.56	-3.5	122.	FIU	46.70	48.70	+2.0
23.	Missouri	81.99	76.49	-5.5	73.	Navy	54.98	63.48	+8.5	123.	Tulsa	52.78	48.28	-4.5
24.	Boise State	72.92	76.42	+3.5	74.	Fresno State	63.89	63.39	-0.5	124.	Southern Miss	51.95	47.95	-4.0
25.	Arkansas	70.58	76.08	+5.5	75.	NC State	75.27	62.77	-12.5	125.	Middle Tennessee	50.25	46.75	-3.5
26.	Michigan	83.42	74.92	-8.5	76.	Wake Forest	64.85	62.35	-2.5	126.	Massachusetts	46.53	46.53	0.0
27.	Iowa	75.37	74.87	-0.5	77.	Toledo	58.74	62.24	+3.5	127.	Ball State	50.20	45.70	-4.5
28.	Nebraska	72.67	74.67	+2.0	78.	Northwestern	66.12	62.12	-4.0	128.	UAB	57.60	45.60	-12.0
29.	Washington	74.05	74.55	+0.5	79.	USF	64.19	61.69	-2.5	129.	Temple	45.52	45.52	0.0
30.	West Virginia	74.26	74.26	0.0	80.	Stanford	64.26	61.26	-3.0	130.	Akron	46.20	45.20	-1.0
31.	South Carolina	73.53	74.03	+0.5	81.	UCLA	71.12	61.12	-10.0	131.	UTEP	46.57	44.57	-2.0
32.	Virginia Tech	76.38	72.88	-3.5	82.	Bowling Green	57.58	60.58	+3.0	132.	New Mexico St	48.60	41.60	-7.0
33.	Florida	75.32	72.82	-2.5	83.	Sam Houston St	50.71	60.21	+9.5	133.	Kennesaw State	40.78	38.78	-2.0
34.	Georgia Tech	70.18	72.68	+2.5	84.	North Texas	56.15	60.15	+4.0	134.	Kent State	44.53	36.03	-8.5
35.	California	70.16	72.66	+2.5	85.	Northern Illinois	58.04	60.04	+2.0	Biggest Gains From Start Of Season		Biggest Losses From Start of Season		
36.	Auburn	77.03	72.53	-4.5	86.	Western Kentucky	59.00	60.00	+1.0	Indiana	+11.5	Florida State	-17.0	
37.	Tulane	63.99	72.49	+8.5	87.	UTSA	67.48	59.48	-8.0	Army	+10.0	NC State	-12.5	
38.	Arizona	76.54	72.04	-4.5	88.	Mississippi State	64.28	59.28	-5.0	Sam Houston St	+9.5	UAB	-12.0	
39.	Pittsburgh	66.99	71.99	+5.0	89.	South Alabama	59.72	59.22	-0.5	Vanderbilt	+9.0	Air Force	-11.0	
40.	BYU	64.66	71.66	+7.0	90.	San Jose State	55.11	59.11	+4.0	UL-Monroe	+9.0	Wyoming	-10.5	
41.	TCU	75.10	71.60	-3.5	91.	Marshall	56.45	58.95	+2.5	Navy	+8.5	UCLA	-10.0	
42.	Colorado	69.08	71.58	+2.5	92.	Coastal Carolina	58.22	58.72	+0.5	Tulane	+8.5	Purdue	-10.0	
43.	Illinois	66.02	71.52	+5.5	93.	East Carolina	58.74	58.24	-0.5	Nevada	+8.0	Appalachian St	-9.5	
44.	Rutgers	70.72	71.22	+0.5	94.	Miami (OH)	60.67	58.17	-2.5	Connecticut	+7.5	Troy	-9.0	
45.	UNLV	64.19	71.19	+7.0	95.	Jacksonville St	58.07	58.07	0.0	UNLV	+7.0	Michigan	-8.5	
46.	UCF	73.61	71.11	-2.5	96.	Connecticut	50.11	57.61	+7.5	BYU	+7.0	Kent State	-8.5	
47.	Wisconsin	75.52	71.02	-4.5	97.	Appalachian St	66.80	57.30	-9.5	New Mexico	+6.5	Oklahoma State	-8.0	
48.	Texas Tech	72.08	70.58	-1.5	98.	Nevada	48.03	56.03	+8.0			UTSA	-8.0	
49.	Kansas	75.73	70.23	-5.5	99.	Purdue	65.99	55.99	-10.0					
50.	Oklahoma State	78.15	70.15	-8.0	100.	Old Dominion	54.43	55.93	+1.5					

2024 Week 7 College Football Power Ratings by Conference

American				MAC				Sun Belt				Big 12			
Rk	Team	Rating	Rk	Team	Rating	Rk	Team	Rating	Rk	Team	Rating	Rk	Team	Rating	
37.	Tulane	72.49	77.	Toledo	62.24	63.	Texas State	66.41	67.	Florida State	65.19	26.	Michigan	74.92	
51.	Memphis	70.10	82.	Bowling Green	60.58	64.	James Madison	66.14	75.	NC State	62.77	27.	Iowa	74.87	
68.	Army	64.91	85.	Northern Illinois	60.04	69.	UL-Lafayette	64.51	76.	Wake Forest	62.35	28.	Nebraska	74.67	
73.	Navy	63.48	94.	Miami (OH)	58.17	89.	South Alabama	59.22	80.	Stanford	61.26	29.	Washington	74.55	
79.	USF	61.69	105.	Western Michigan	54.16	91.	Marshall	58.95				44.	Rutgers	71.22	
84.	North Texas	60.15	106.	Ohio	53.65	92.	Coastal Carolina	58.72	14.	Iowa State	79.93	47.	Wisconsin	71.02	
87.	UTSA	59.48	112.	Central Michigan	52.27	97.	Appalachian State	57.30	16.	Kansas State	78.28	52.	Minnesota	69.88	
93.	East Carolina	58.24	114.	Eastern Michigan	51.61	100.	Old Dominion	55.93	17.	Utah	77.40	55.	Maryland	68.91	
111.	Florida Atlantic	52.34	119.	Buffalo	50.03	102.	Arkansas State	55.35	30.	West Virginia	74.26	61.	Michigan State	67.30	
113.	Rice	51.89	127.	Ball State	45.70	103.	Georgia Southern	55.30	38.	Arizona	72.04	78.	Northwestern	62.12	
116.	Charlotte	51.31	130.	Akron	45.20	108.	Georgia State	53.20	40.	BYU	71.66	81.	UCLA	61.12	
123.	Tulsa	48.28	134.	Kent State	36.03	110.	UL-Monroe	52.76	41.	TCU	71.60	99.	Purdue	55.99	
128.	UAB	45.60	Mountain West				118.	Troy	50.28	42.	Colorado	71.58	SEC		
129.	Temple	45.52	Rating				124.	Southern Miss	47.95	46.	UCF	71.11	2.	Texas	91.71
			Rk							48.	Texas Tech	70.58	3.	Georgia	91.61
			Team							49.	Kansas	70.23	4.	Alabama	88.22
			Rating							50.	Oklahoma State	70.15	6.	Ole Miss	87.50
			Rk							54.	Arizona State	69.02	7.	Tennessee	86.79
			Team							56.	Cincinnati	68.65	12.	Texas A&M	80.70
			Rating							59.	Baylor	67.72	13.	LSU	80.33
			Rk							70.	Houston	64.42	18.	Kentucky	77.16
			Team							Big Ten			22.	Oklahoma	76.65
			Rating										23.	Missouri	76.49
			Rk										25.	Arkansas	76.08
			Team										31.	South Carolina	74.03
			Rating										33.	Florida	72.82
			Rk										36.	Auburn	72.53
			Team										62.	Vanderbilt	67.29
			Rating										88.	Mississippi State	59.28

Week 7 Computer Projected Lines for Every CFB Game

For the past eight seasons we have posted computer projected lines for every game on Wednesday. **Games where there was of difference of more than 3 points saw our computer lines actually beat the Vegas line at a 487-414-14 (54.1%) clip!** That's pretty solid and actually better than our own handicapping in some seasons. Keep in mind, these computer lines don't take into consideration off-the-field factors like revenge or flat spots or if there are late-week injuries. They are basically a power-rating number difference between the two teams that also takes into consideration the home field advantage.

This year's record is a pathetic 7-16 so far. Of the 2 games where our computer is off more than 3 points compared to the Vegas line (highlighted), our favorite team this week to back would be **Central Michigan +3**.

The Comp column is the computer projected line and the Diff column is the difference between the Vegas line and the Computer line. "+" numbers in the difference column say back the underdog. "-" numbers in the difference column say back the favorite. Let us know if you have questions.

Tuesday, Oct 8th	Line	Comp	Diff				
101 FIU				155 Toledo			
102 Liberty	-16.5	-18.1	-1.6	156 Buffalo	+9.5	+10.0	-0.5
Wednesday, Oct 9th	Line	Comp	Diff	157 North Texas			
103 New Mexico State				158 Florida Atlantic	+6.5	+5.8	+0.7
104 Jacksonville St	-21.5	-18.7	+2.8	159 UTSA			
Thursday, Oct 10th	Line	Comp	Diff	160 Rice	+5.5	+5.8	-0.3
107 Coastal Carolina				161 Georgia Tech			
108 James Madison	-9.5	-10.2	-0.7	162 North Carolina	+5.5	+4.5	+1.0
109 Middle Tennessee				163 UAB			
110 Louisiana Tech	-4.5	-6.2	-1.7	164 Army	-26.5	-21.8	+4.7
111 UTEP				165 Southern Miss			
112 Western Kentucky	-19.5	-17.9	+1.6	166 UL-Monroe	-6.5	-6.3	+0.2
Friday, Oct 11th	Line	Comp	Diff	167 Purdue			
115 Northwestern				168 Illinois	-18.5	-17.5	+1.0
116 Maryland	-10.5	-8.8	+1.7	169 Wisconsin			
117 UNLV				170 Rutgers	-2.5	-2.2	+0.3
118 Utah State	+19.0	+17.3	+1.7	171 Kansas State			
119 Utah				172 Colorado	+4.0	+4.2	-0.2
120 Arizona State	+6.5	+5.9	+0.6	173 Air Force			
Saturday, Oct 12th	Line	Comp	Diff	174 New Mexico	-6.5	-5.4	+1.1
121 Miami, OH				175 San Jose State			
122 Eastern Michigan	+2.5	+4.8	-2.3	176 Colorado State	+1.0	+1.4	-0.4
123 Iowa State				177 Arizona			
124 West Virginia	+3.0	+2.9	+0.1	178 BYU	-5.0	-2.4	+2.6
125 Marshall				179 Washington State			
126 Georgia Southern	+1.5	+1.2	+0.3	180 Fresno State	+3.5	+2.1	+1.4
127 California				181 South Carolina			
128 Pittsburgh	-3.5	-1.6	+1.9	182 Alabama	-21.0	-18.2	+2.8
129 Vanderbilt				183 Stanford			
130 Kentucky	-13.5	-12.6	+0.9	184 Notre Dame	-23.5	-24.9	-1.4
131 Syracuse				185 Texas			
132 NC State	+5.0	+3.5	+1.5	186 Oklahoma	+14.5	+15.1	-0.6
133 Missouri				187 Ole Miss			
134 Massachusetts	+27.5	+28.7	-1.2	188 LSU	+3.5	+3.4	+0.1
135 Northern Illinois				189 Appalachian State			
136 Bowling Green	-2.5	-2.0	+0.5	190 UL-Lafayette	-10.5	-9.7	+0.8
137 Akron				191 San Diego State			
138 Western Michigan	-9.5	-11.2	-1.7	192 Wyoming	+2.0	+1.0	+1.0
139 Louisville				193 Arkansas State			
140 Virginia	+7.5	+6.3	+1.2	194 Texas State	-14.5	-12.8	+1.7
141 Florida				195 Minnesota			
142 Tennessee	-15.5	-17.0	-1.5	196 UCLA	+5.5	+6.5	-1.0
143 Old Dominion				197 Ohio State			
144 Georgia State	-1.5	+1.0	+2.5	198 Oregon	+3.5	+3.1	+0.4
145 Ball State				199 Washington			
146 Kent State	+6.5	+7.9	-1.4	200 Iowa	-2.5	-3.3	-0.8
147 Clemson				201 Oregon State			
148 Wake Forest	+20.0	+18.2	+1.8	202 Nevada	+4.0	+5.3	-1.3
149 Mississippi State				203 Penn State			
150 Georgia	-34.0	-35.8	-1.8	204 USC	+5.0	+2.9	+2.1
151 Cincinnati				205 Boise State			
152 Central Florida	-3.0	-5.7	-2.7	206 Hawaii	-20.5	+19.2	+1.3
153 Ohio				113 Memphis			
154 Central Michigan	+3.0	-0.6	+3.6	114 South Florida	+7.0	+6.7	+0.3

Betting CFB Openers

Every Sunday in Vegas at 11am PT, Circa Sports is the first book in the world to release CFB lines and we bet them every week. We think it's the best value bets we make all week. 2020 was the first season where we tracked every single bet we made and posted them in the weekly newsletters. We were very pleased with our 119-76-3 (61%) record on these Sunday bets with an average line value of 2.6 ppg! In 2021, we were 224-196-5 (53.3%) vs the Circa openers with an average line value of 1.8 ppg. In 2022, we were 314-262-14 (54.5%, CLV 417-122-51 +1.65 ppg). Last year we were 405-358-6 (53.4%, CLV 577-137-55 +2.09 ppg). Below is some of what we bet already. Starting last season, Fan Duel and Draft Kings have been releasing select CFB games a couple hours before Circa so those bets are included below as well.

All bets are either \$550 at Fan Duel, Draft Kings, Westgate and South Point or \$1100 at Circa unless otherwise noted.

- (107) Coastal Carolina OVER 55.5 (Circa)
- (108) James Madison -9.5 (Draft Kings)
- (110) Louisiana Tech -3.5 (Fan Duel)
- (110) Louisiana Tech UNDER 52.5 (Fan Duel)
- (115) Northwestern +12 (Circa)
- (115) Northwestern +10.5 (Fan Duel)
- (115) Northwestern OVER 42.5 (Fan Duel)
- (119) Utah -3 (Circa)
- (119) Utah -5 (Draft Kings)
- (124) West Virginia +3.5 (Fan Duel)
- (126) Georgia Southern UNDER 63 (Circa)
- (127) California OVER 57.5 (Circa)
- (128) Pittsburgh -2.5 (Fan Duel)
- (129) Vanderbilt OVER 42.5 (Circa)
- (130) Kentucky -10 (Circa)
- (130) Kentucky -10.5 (Draft Kings)
- (131) Syracuse OVER 52.5 (Fan Duel)
- (138) Western Michigan -8 (Circa)
- (139) Louisville -6.5 (Draft Kings)
- (142) Tennessee -15.5 (Fan Duel)
- (145) Ball State OVER 55.5 (Circa)
- (145) Ball State -6 (Circa)
- (147) Clemson OVER 56.5 (Fan Duel)
- (150) Georgia UNDER 54 (Circa)
- (153) Ohio OVER 45.5 (Circa)
- (154) Central Michigan +3 (Draft Kings)
- (155) Toledo OVER 44.5 (Circa)
- (159) UTSA -3.5 (Draft Kings)
- (159) UTSA OVER 43.5 (Circa)
- (164) Army -20 (Draft Kings)
- (165) Southern Miss +10 (Circa)
- (166) UL-Monroe -4.5 (Draft Kings)
- (169) Wisconsin OVER 38.5 (Circa)
- (174) New Mexico -3 (Draft Kings)
- (181) South Carolina OVER 50.5 (Circa)
- (184) Notre Dame -20.5 (Fan Duel)
- (188) LSU UNDER 65.5 (Fan Duel)
- (200) Iowa -2.5 (Fan Duel)
- (201) Oregon State OVER 48.5 (Circa)
- (202) Nevada +8.5 (Draft Kings)
- (204) USC UNDER 52.5 (Fan Duel)
- (205) Boise State OVER 59.5 (Circa)
- (206) Hawaii +21 (Draft Kings)

Summer Game of Year from Preview Guide:

- (186) Oklahoma +10.5 (Fan Duel)
- (187) Ole Miss +3.5 (William Hill)
- (198) Oregon -1.5 (Fan Duel)

Games in Rotation Order
Thursday, October 10th

HOME TEAM IN CAPS

San Francisco 25 SEATTLE 22. The 49ers have been favored in all 5 games so far this season yet are 2-3. Last week they blew a big halftime lead to the Cardinals as 7-point home favorites and lost 24-23. Seattle also lost outright as a 7-point home favorite last week to the Giants 29-20. After a 3-0 start, the Seahawks have lost their last 2. This is their 3rd game in 11 days which should not be allowed in this league. We still think the 49ers are a Top 5 team as far as a power rating but this point-spread is a little inflated.

Sunday, October 13th

† **Jacksonville 23 Chicago 22.** @Tottenham Hotspur Stadium in London, England. Jacksonville is 6-5 in London while the Bears are making their first trip in 5 years (1-1 all-time record). Despite a 3-2 SU and 4-1 ATS record, we think the Bears are fraudulent. They are -0.6 in ypp margin despite playing the weakest schedule so far in the NFL. The Jags finally got their first win of the season last week. They are -0.3 in ypp margin but have played a tougher schedule. With them being used to London, we're calling for the outright upset.

BALTIMORE 30 Washington 24. Washington is 4-1 SU and ATS thanks to the great play of rookie QB Jayden Daniels who is No. 3 in QBR. They blew out Cleveland last week with a 6.7-3.6 ypp edge. Meanwhile, the Ravens have won 3 straight after an 0-2 start. Last week they had the big come-from-behind win at division rival Cincinnati. With the Steelers losing on SNF, the Ravens are right back atop the division. They are No. 1 in ypp margin and No. 2 in DVOA and have played the tougher schedule than the Commanders. Both teams are 4-1 to the OVER and both have dynamic QB's. We lean OVER.

GREEN BAY 27 Arizona 21. The Cardinals come in off the big upset of the 49ers as 7-point underdogs. They dominated the second half. However, we don't like the spot here traveling and playing an early start time. The Packers are No. 3 in ypp margin and we think LeFleur is a Top 5 coach. QB Love should be getting healthier with each passing week. We lean with the Packers.

Houston 23 NEW ENGLAND 14. Drake Maye looks like he will get the start here for the Patriots. New England is who we thought they were as after a shocking upset over Cincinnati in Week 1, they've lost 4 straight and rank No. 31 in ypp margin. The Texans are No. 3 in ypp margin and have play a tougher schedule. They escaped with a win over the Bills on Sunday but did have a 425-276 yard edge. Somehow, they are 1-4 ATS despite a 4-1 record. We like them to win and cover here.

Tampa Bay 22 NEW ORLEANS 19. New Orleans QB Derek Carr is expected to miss multiple weeks with an oblique injury. Jake Haener replaced Carr in the KC game on Monday night but Spencer Rattler could also see action. In a matter of 3 weeks, the Saints went from being in the conversation of a Top 3 team in the NFL to now a clear bottom 5 team without Carr. Tampa has extra time to prep after the heart-breaking loss in OT to the Falcons last Thursday. However, they could be playing with other things on their mind considering Hurricane Milton is set to hit the Tampa area on Thursday. We're passing for now.

PHILADELPHIA 25 Cleveland 15. Last Sunday, Terry Bradshaw pondered if Deshaun Watson should be "put down" on the FOX studio broadcast. Obviously, he meant being benched but considering what Watson has done on the field this year (dead last in QBR) and off the field (more allegations), we think it might be the humane thing to do (we're joking...maybe). The trade for him will go down as one of the worst moves in the history of the NFL. The Browns are dead last in YPP margin and dead last in DVOA (advanced stat metric). That's despite playing one of the weakest schedules in the NFL so far. They're playing a Philly team coming off a bye. This could get ugly unless the Browns do what needs to be done with Watson (think "Old Yeller"...again we kid).

Indianapolis 23 TENNESSEE 22. Indianapolis QB Anthony Richardson is set to practice this week. We think he could be a downgrade as Richardson is completing just 50.6% with a 3-6 TD-to-INT ratio while Joe Flacco completed 70% of his passes with a 5-0 ratio the last couple of games. On the other side, Will Levis is also expected to practice this week. He could play which again could be a downgrade considering his TO woes this year. We'll give you some scenarios. If Joe Flacco plays, we like Indy who has the better ypp margin and has played the tougher schedule. If its Richardson vs Rudolph, we'll take the Titans. If it's Richardson vs Levis, give us the UNDER and a brown paper bag.

L.A. Chargers 19 DENVER 18. The Chargers are coming off a bye and the hope is that QB Justin Herbert is closer to 100% as he has been dealing with a high ankle sprain since week 2. The Broncos have impressed so far this season as they have won 3 straight games. Last week's win vs the Raiders was misleading though as they got outgained 330-289 and were +3 in TO's. The two teams are close stats wise and have played similar strength of schedules. The spot says Chargers but we can't get to the window as this steep of a number.

Pittsburgh 20 LAS VEGAS 17. The Steelers are who we thought they were after two straight upset losses to the Colts and Cowboys. They are just No. 22 in ypp margin. We obviously don't like the Raiders either this year as we believe there are locker-room issues. They did have a misleading 34-18 loss to the Broncos last week where they had a 330-289 yard edge but were -3 in TO's. The Steelers should have more fans in the stands. We're passing.

Atlanta 26 CAROLINA 21. Atlanta has extra time to prep after their dramatic OT win over Tampa Bay on Thursday. The Falcons rank No. 2 in ypp margin despite playing one of the tougher schedules. Carolina QB Andy Dalton is playing well but the Carolina defense stinks. They rank No. 29 in ypp and No. 30 in DVOA but this seems a little pricey on the Atlanta side.

Detroit 25 DALLAS 24. With all due respect to the Washington/Baltimore game, this is probably the game of the week. The Cowboys are 3-0 on the road this year but yet are 0-2 at home. The Lions come in off a bye. Detroit is better in ypp margin and DVOA but the Cowboys have played the tougher schedule so far. Despite their home struggles we like Dallas here.

Cincinnati 25 N.Y. GIANTS 22. Wow, what a poor matchup for Sunday Night Football especially. When does Yellowstone come back on? Joe Burrow is playing well for the Bengals with a No. 2 QBR rating. However, the Bengals defense is allowing 29.0 ppg (No. 31). The Giants do come in off an upset win at Seattle as 7-point underdogs. The Bengals are better in ypp and DVOA but we can't get to laying more than a FG with a 1-4 team that's already lost twice as a big favorite. Again we ask when does Yellowstone come back?

Monday, October 14th

Buffalo 21 N.Y. JETS 20. The big news is the firing of Jets head coach Robert Salah who was escorted out of the offices. When will Woody Johnson's time come? This franchise is a total mess since he took ownership. This is a huge game for both obviously. The Bills have lost back-to-back since a 3-0 start. QB Josh Allen leads the league in QBR while Aaron Rodgers just looks old (No. 21 in QBR). We lean Jets who could get that one-game bump with an interim coach (Jeff Ulbrich) but would prefer them in a teaser.

Nevada (SU: 2-4, ATS: 4-2, O/U: 3-3)

Table with columns: Date, Opponent, Line Score, ATS/O/U. Rows include SMU (+28 24-29 W u55), Troy (+7 28-26 W o44), Georgia Southern (+1 17-20 L u56), Minnesota (+16 0-27 L u44), Eastern Wash (-13 49-16 W o55), San Jose State (+7 31-35 W o51), Oregon State, Fresno State, Hawaii, Colorado State, Boise State, Air Force, UNLV.

New Mexico (SU: 1-4, ATS: 3-2, O/U: 4-1)

Table with columns: Date, Opponent, Line Score, ATS/O/U. Rows include Montana State (+13 31-35 W o54), Arizona (+28 39-61 W o60), Auburn (+24 19-45 L o58), Fresno State (+12 21-38 L u61), New Mexico St (-9 50-40 W o54), Air Force, Utah State, Colorado State, Wyoming, San Diego State, Washington State, Hawaii.

New Mexico State (SU: 1-4, ATS: 1-4, O/U: 2-2-1)

Table with columns: Date, Opponent, Line Score, ATS/O/U. Rows include SE Missouri St (-10 23-16 L u52), Liberty (+22 24-30 W p54), Fresno State (+20 0-48 L o47), Sam Houston St (+14 11-31 L u44), New Mexico (+9 40-50 L o54), Jacksonville State, Louisiana Tech, FIU, Western Kentucky, Texas A&M, Middle Tennessee, UTEP.

North Carolina (SU: 3-3, ATS: 0-5-1, O/U: 2-4)

Table with columns: Date, Opponent, Line Score, ATS/O/U. Rows include Minnesota (-2 19-17 P u53), Charlotte (-21 38-20 L o48), NC Central (-38 45-10 L u56), James Madison (-11 50-70 L o48), Duke (-1 20-21 L u55), Pittsburgh (+2 24-34 L u63), Georgia Tech, Virginia, Florida State, Wake Forest, Boston College, NC State.

North Texas (SU: 4-1, ATS: 3-2, O/U: 4-1)

Table with columns: Date, Opponent, Line Score, ATS/O/U. Rows include South Alabama (+6 52-38 W o62), Stephen F. Austin (-23 35-20 L u7), Texas Tech (+11 21-66 L o70), Wyoming (-7 44-17 W o55), Tulsa (-7 52-20 W o65), Florida Atlantic, Memphis, Tulane, Army, UTSA, East Carolina, Temple.

Northern Illinois (SU: 3-2, ATS: 2-1-2, O/U: 2-2-1)

Table with columns: Date, Opponent, Line Score, ATS/O/U. Rows include Western Illinois (-35 54-15 W u55), Notre Dame (+28 16-14 W o47), Buffalo-ot (-13 20-23 L p43), NC State (+7 17-24 P u46), Massachusetts (-14 34-20 P o41), Bowling Green, Toledo, Ball State, Western Michigan, Akron, Miami (OH), Central Michigan.

Northwestern (SU: 2-3, ATS: 1-4, O/U: 2-2-1)

Table with columns: Date, Opponent, Line Score, ATS/O/U. Rows include Miami (OH) (-3 13-6 W u40), Duke-2ot (-2 20-26 L o37), Eastern Illinois (-24 31-7 L p38), Washington (+12 5-24 L u42), Indiana (+13 24-41 L o40), Maryland, Wisconsin, Iowa, Purdue, Ohio State, Michigan, Illinois.

Notre Dame (SU: 4-1, ATS: 3-2, O/U: 2-3)

Table with columns: Date, Opponent, Line Score, ATS/O/U. Rows include Texas A&M (+3 23-13 W u47), Northern Illinois (-28 14-16 L u47), Purdue (-7 66-7 W o47), Miami (OH) (-27 28-3 L u43), Louisville (-6 31-24 W o45), Stanford, Georgia Tech, Navy, Florida State, Army, Virginia, USC.

Ohio (SU: 3-2, ATS: 3-2, O/U: 2-3)

Table with columns: Date, Opponent, Line Score, ATS/O/U. Rows include Syracuse (+17 22-38 W o44), South Alabama PK (27-20 W u55), Morgan State (-25 21-6 L u45), Kentucky (+21 6-41 L o41), Akron (-8 30-10 W u46), Central Michigan, Miami (OH), Buffalo, Kent State, Eastern Michigan, Toledo, Ball State.

Ohio State (SU: 5-0, ATS: 3-2, O/U: 3-2)

Table with columns: Date, Opponent, Line Score, ATS/O/U. Rows include Akron (-49 52-6 L o56), Western Michigan (-37 56-0 W o54), Marshall (-40 49-14 L o57), Michigan St (-23 38-7 W u48), Iowa (-17 35-7 W u46), Oregon, Nebraska, Penn State, Purdue, Northwestern, Indiana, Michigan.

Oklahoma (SU: 4-1, ATS: 3-2, O/U: 3-2)

Table with columns: Date, Opponent, Line Score, ATS/O/U. Rows include Temple (-43 51-3 W u58), Houston (-27 16-12 L u49), Tulane (-12 34-19 W o49), Tennessee (+5 15-25 L u57), Auburn (+1 27-21 W o43), Texas, South Carolina, Ole Miss, Maine, Missouri, Alabama, LSU.

Oklahoma State (SU: 3-3, ATS: 2-4, O/U: 3-3)

Table with columns: Date, Opponent, Line Score, ATS/O/U. Rows include South Dakota St (-13 44-20 W o55), Arkansas-2ot (-10 39-31 L o61), Tulsa (-17 45-10 W o63), Utah PK (19-22 L u53), Kansas State (+6 20-42 L o58), West Virginia (-3 14-38 L u65), BYU, Baylor, Arizona State, TCU, Texas Tech, Colorado.

Old Dominion (SU: 1-4, ATS: 2-3, O/U: 3-2)

Table with columns: Date, Opponent, Line Score, ATS/O/U. Rows include South Carolina (+20 19-23 W u50), East Carolina (-1 14-20 L u54), Virginia Tech (+16 17-37 L o47), Bowling Green (+11 30-27 W o51), Coastal Carolina (+4 37-45 L o51), Georgia State, Texas State, Georgia Southern, Appalachian State, James Madison, Marshall, Arkansas State.

Ole Miss (SU: 5-1, ATS: 5-1, O/U: 1-5)

Table with columns: Date, Opponent, Line Score, ATS/O/U. Rows include Furman (-46 76-0 W o60), Middle Tennessee (-42 52-3 W u62), Wake Forest (-21 40-6 W u66), Georgia Southern (-36 52-13 W o68), Kentucky (-15 17-20 L u51), South Carolina (-10 27-3 W u53), LSU, Oklahoma, Arkansas, Georgia, Florida, Mississippi State.

Oregon (SU: 5-0, ATS: 1-4, O/U: 2-3)

Table with columns: Date, Opponent, Line Score, ATS/O/U. Rows include Idaho (-49 24-14 L u60), Boise State (-17 37-34 L o61), Oregon State (-18 49-14 W o49), UCLA (-23 34-13 L u54), Michigan State (-22 31-10 L u53), Ohio State, Purdue, Illinois, Michigan, Maryland, Wisconsin, Washington.

Oregon State (SU: 4-1, ATS: 2-3, O/U: 3-2)

Table with columns: Date, Opponent, Line Score, ATS/O/U. Rows include Idaho State (-29 38-15 L u57), San Diego St (-5 21-0 W u53), Oregon (+18 14-49 L o49), Purdue (-1 38-21 W o51), Colorado St-2ot (-10 39-31 L o47), Nevada, UNLV, California, San Jose State, Air Force, Washington State, Boise State.

Penn State (SU: 5-0, ATS: 2-3, O/U: 1-4)

Table with columns: Date, Opponent, Line Score, ATS/O/U. Rows include West Virginia (-7 34-12 W u49), Bowling Green (-34 34-27 L o51), Kent State (-49 56-0 W u48), Illinois (-19 21-7 L u58), UCLA (-30 27-11 L u48), Wisconsin, Ohio State, Washington, Purdue, Minnesota, Maryland.

Pittsburgh (SU: 5-0, ATS: 5-0, O/U: 3-2)

Table with columns: Date, Opponent, Line Score, ATS/O/U. Rows include Kent State (-23 55-24 W o55), Cincinnati (+1 28-27 W u62), West Virginia (+1 38-34 W o62), Youngstown St (-26 73-17 W o60), North Carolina (-2 34-24 W u63), California, Syracuse, SMU, Virginia, Clemson, Louisville, Boston College.

Purdue (SU: 1-4, ATS: 1-4, O/U: 3-2)

Table with columns: Date, Opponent, Line Score, ATS/O/U. Rows include Indiana State (-34 49-0 W u52), Notre Dame (+7 7-66 L o47), Oregon State (+1 21-38 L o51), Nebraska (+10 10-28 L u47), Wisconsin (+11 6-52 L o44), Illinois, Oregon, Northwestern, Ohio State, Penn State, Michigan State, Indiana.

Rice (SU: 1-4, ATS: 1-4, O/U: 2-3)

Table with columns: Date, Opponent, Line Score, ATS/O/U. Rows include Sam Houston St (-9 14-34 L u49), Texas Southern (-28 69-7 W o52), Houston (+4 7-33 L u45), Army (+7 14-37 L o43), Charlotte (-4 20-21 L u47), UTSA, Tulane, Connecticut, Navy, Memphis, UAB, USF.

Rutgers (SU: 4-1, ATS: 3-1-1, O/U: 2-3)

Table with columns: Date, Opponent, Line Score, ATS/O/U. Rows include Sam Houston St (-9 14-34 L u49), Akron (-24 49-17 W o41), Virginia Tech (+3 26-23 W o45), Washington (-1 21-18 W u45), Nebraska (+7 7-14 P u39), Wisconsin, UCLA, USC, Minnesota, Maryland, Illinois, Michigan State.

Sam Houston St (SU: 5-1, ATS: 5-1, O/U: 3-3)

Table with columns: Date, Opponent, Line Score, ATS/O/U. Rows include Rice (+9 34-14 W u49), UCF (+21 14-45 L o54), Hawaii (-4 31-13 W u48), New Mexico St (-14 31-11 W u44), Texas State (+10 40-39 W o55), UTEP (-10 41-21 W o49), Western Kentucky, FIU, Louisiana Tech, Kennesaw State, Jacksonville State, Liberty.

San Diego State (SU: 2-3, ATS: 2-3, O/U: 2-3)

Table with columns: Date, Opponent, Line Score, ATS/O/U. Rows include Texas A&M Com (-33 45-14 L o58), Oregon State (+5 0-21 L u53), California (+19 10-31 L u48), Central Mich (+2 21-22 W u47), Hawaii (-1 27-24 W o47), Wyoming, Washington State, New Mexico, UNLV, Utah State, Air Force.

San Jose State (SU: 4-1, ATS: 4-1, O/U: 3-2)

Table with columns: Date, Opponent, Line Score, ATS/O/U. Rows include Sacramento St (-2 42-24 W o43), Air Force (+2 17-7 W u67), Kennesaw State (-17 31-10 W u42), Wash St-2ot (+13 52-54 W o55), Nevada (-7 35-31 L o51), Wyoming, Fresno State, Oregon State, Boise State, UNLV, Stanford.

SMU (SU: 5-1, ATS: 4-2, O/U: 4-2)

Table with columns: Date, Opponent, Line Score, ATS/O/U. Rows include Nevada (-28 29-24 L u55), Houston Christian (-50 59-7 W o62), BYU (-12 15-18 L u56), TCU (+1 66-42 W o58), Florida State (-6 42-16 W o46), Louisville (+6 27-34 L o55), Stanford, Duke, Pittsburgh, Boston College, Virginia, California.

South Alabama (SU: 2-4, ATS: 1-4, O/U: 1-4)

Table with columns: Date, Opponent, Line Score, ATS/O/U. Rows include North Texas (-6 38-52 L o62), Ohio PK (20-27 L u55), Northwestern St (-37 87-10 N/A/59), Appalachian St (+8 48-14 W u62), LSU (+21 10-42 L u62), Arkansas St (-2 16-18 L u62), Troy, UL-Monroe, Georgia Southern, UL-Lafayette, Southern Miss, Texas State.

South Carolina (SU: 3-2, ATS: 3-2, O/U: 2-3)

Table with columns: Date, Opponent, Line Score, ATS/O/U. Rows include Old Dominion (-20 23-19 L u50), Kentucky (+9 31-6 W u41), LSU (+6 33-36 W o48), Akron (-24 50-7 W o41), Ole Miss (+10 3-27 L u53), Alabama, Oklahoma, Texas A&M, Vanderbilt, Missouri, Wofford, Clemson.

Southern Miss (SU: 1-4, ATS: 2-2, O/U: 1-3)

Table with columns: Date, Opponent, Line Score, ATS/O/U. Rows include Kentucky (+25 0-31 N/A/50), SE Louisiana (-17 35-10 W u53), UF (+13 24-49 L o58), Jacksonville St (+6 7-44 L u59), UL-Lafayette (+17 13-23 W u57), UL-Monroe, Arkansas State, James Madison, Marshall, Texas State, South Alabama, Troy.

Stanford (SU: 2-3, ATS: 2-3, O/U: 1-4)

Table with columns: Date, Opponent, Line Score, ATS/O/U. Rows include TCU (+7 27-34 W o59), Cal Poly (-35 41-7 L u61), Syracuse (+9 26-24 W u57), Clemson (+24 14-40 L u58), Virginia Tech (+9 7-31 L u49), SMU, Wake Forest, NC State, Louisville, California, San Jose State.

Syracuse (SU: 2-3, ATS: 2-3, O/U: 2-3)

Table with columns: Date, Opponent, Line Score, ATS/O/U. Rows include Ohio (-17 38-22 L o44), Georgia Tech (+3 31-28 W u60), Stanford (-9 24-26 L u57), Holy Cross (-30 42-14 L u59), UNLV-ot (+5 44-41 W o56), NC State, Pittsburgh, Virginia Tech, Boston College, California, Connecticut, Miami (FL).

TCU (SU: 3-3, ATS: 1-5, O/U: 4-2)

Table with columns: Date, Opponent, Line Score, ATS/O/U. Rows include Stanford (-7 34-27 L o59), LIU (-46 45-0 L u56), UCF (-2 34-35 L o61), SMU (-1 42-66 L u58), Kansas (+1 38-27 W o59), Houston (-16 19-30 L u52), Utah, Texas Tech, Baylor, Oklahoma State, Arizona, Cincinnati.

Temple (SU: 1-5, ATS: 3-3, O/U: 3-3)

Table with columns: Date, Opponent, Line Score, ATS/O/U. Rows include Oklahoma (+43 3-51 L u58), Navy (+11 11-38 L o42), Coastal Carolina (+17 20-28 W u52), Utah State (+6 45-29 W o53), Army (+11 14-42 L o46), Connecticut (+17 20-29 W u49), Tulsa, East Carolina, Tulane, Florida Atlantic, UTSA, North Texas.

Tennessee (SU: 4-1, ATS: 4-1, O/U: 3-2)

Table with columns: Date, Opponent, Line Score, ATS/O/U. Rows include Chattanooga (-39 69-3 W o57), NC State (-8 51-10 W o60), Kent State (-49 71-0 W o62), Oklahoma (-5 25-15 W u57), Arkansas (-14 14-19 L u57), Florida, Alabama, Kentucky, Mississippi State, Georgia, UTEP, Vanderbilt.

Texas (SU: 5-0, ATS: 4-1, O/U: 3-2)

Table with columns: Date, Opponent, Line Score, ATS/O/U. Rows include Colorado State (-35 52-0 W u62), Michigan (-6 31-12 W o42), UTSA (-35 56-7 W o55), UL-Monroe (-42 51-3 W o53), Mississippi State (-37 35-13 L u58), Oklahoma, Georgia, Vanderbilt, Florida, Arkansas, Kentucky, Texas A&M.

Texas A&M (SU: 5-1, ATS: 2-4, O/U: 3-3)

Table with columns: Date, Opponent, Line Score, ATS/O/U. Rows include Notre Dame (-3 13-23 L u47), McNeese State (-48 52-10 L o57), Florida (-8 33-20 W o46), Bowling Green (-20 26-20 L u50), Arkansas (-6 21-17 L u50), Missouri (-2 41-10 W o47), Mississippi State, LSU, South Carolina, New Mexico State, Auburn, Texas.

BP SPORTS 2024 FOOTBALL PACKAGES

order online at bradpowerssports.com

Item:	Regular:	Sale:
Weekly Newsletter (Emailed Wednesdays)	\$50	\$41
CFB/NFL VIP Service	\$749	\$499

Should I sign up for the Newsletter or VIP?

	NL	VIP
Bet less than 10 games each week	✓	
\$100 or less per bet	✓	
Can only bet on Gamedays	✓	
One Update Sent Each Week	✓	
Bet more than 10 games each week		✓
\$250 or more per bet		✓
Can bet early in the week		✓
Daily updates via Email/Text		✓