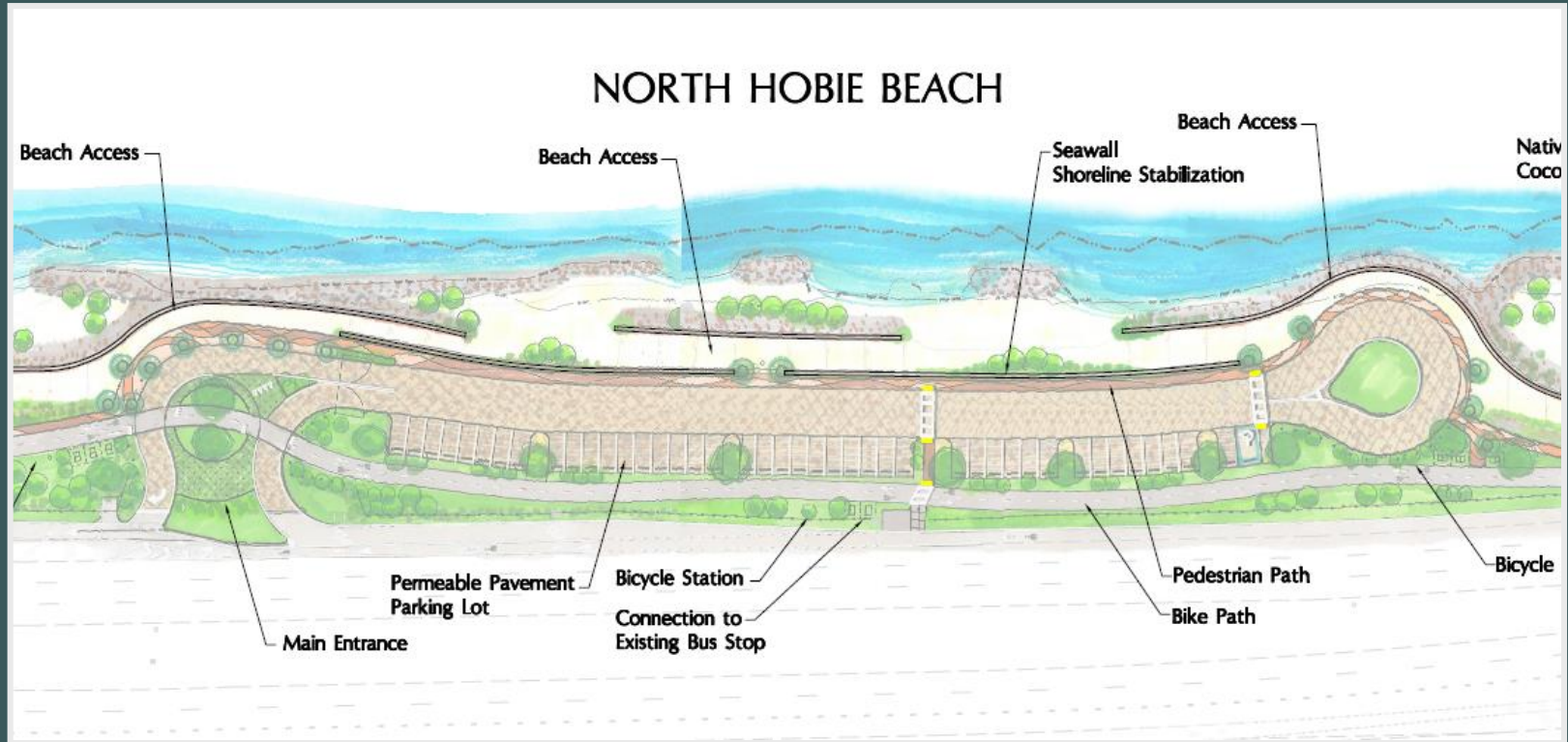


## BICYCLE PROJECTS



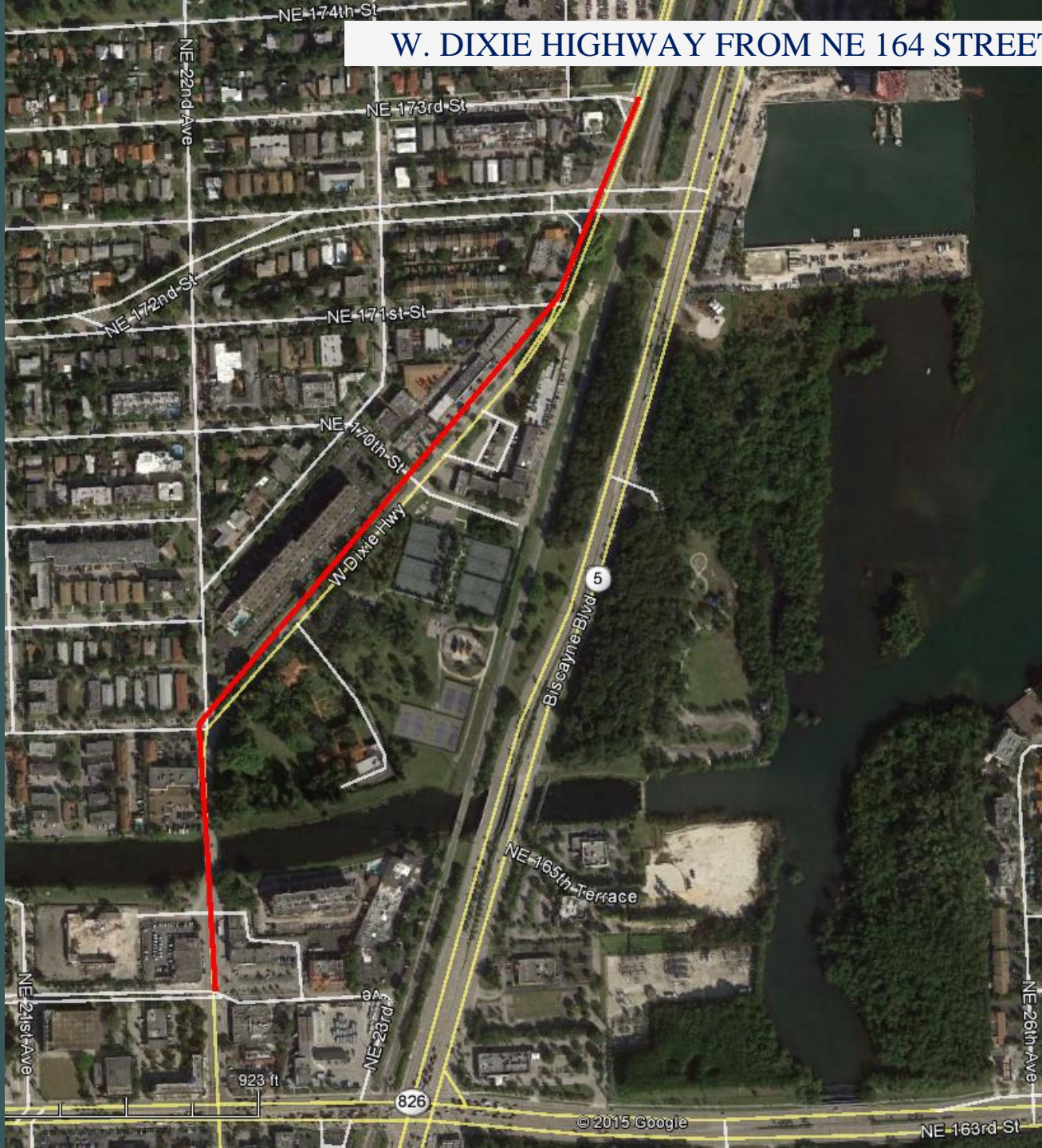
## HOBIE ISLAND BEACH RENOURISHMENT



STATUS: UNDER DESIGN. ESTIMATED DESIGN COMPLETION 2017 ASSUMING FUNDING FULLY AVAILABLE.



## W. DIXIE HIGHWAY FROM NE 164 STREET TO NE 173 STREET



SCOPE: Widen to 4 lanes, landscaped center median, decorative street lighting, bicycle lanes, R/W acquisition, bridge replacement and continuous drainage system.

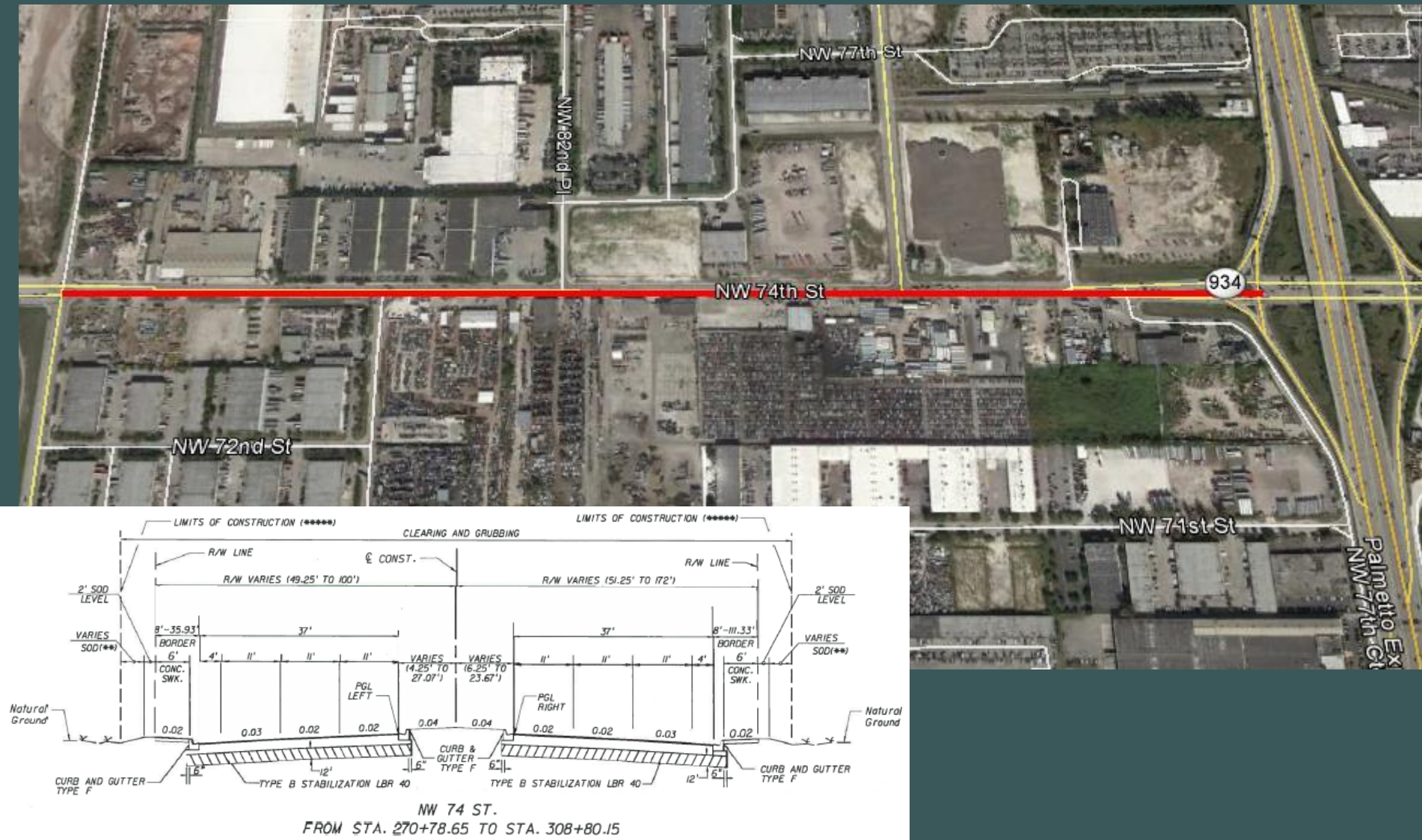
STATUS: Consultant Selection.



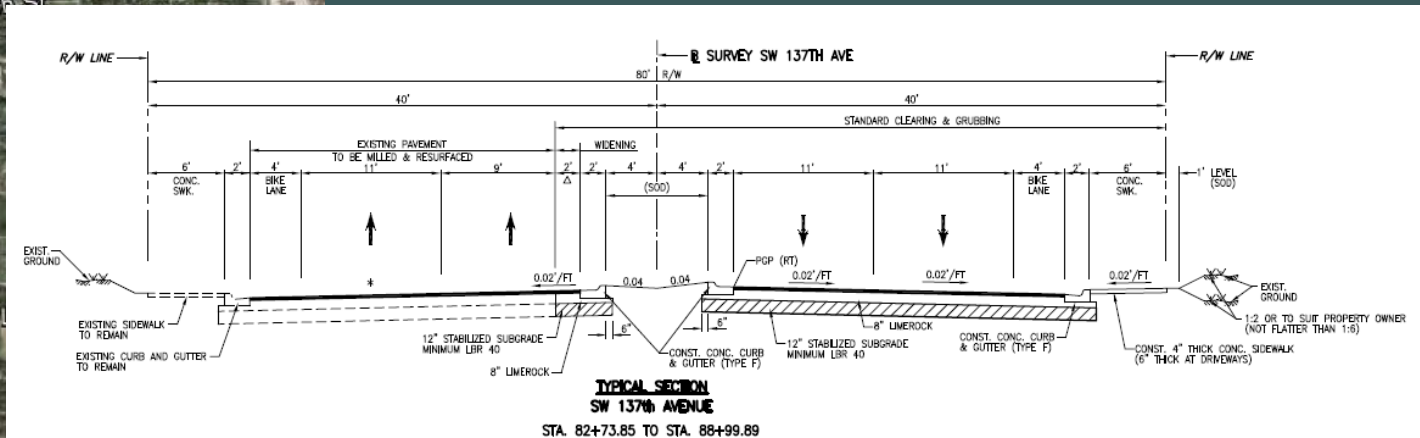
## NW 74 STREET FROM NW 87 AVENUE TO SR 826

**SCOPE:** Roadway widening to 6 lanes to include bike lanes, sidewalks, curb & gutter, bicycle facility, storm drainage system, pavement markings and signing, traffic signalization and roadway lighting.

STATUS: Bid and Award. Estimated construction completion-December 2016



# SW 137 AVENUE FROM HEFT TO US-1



**SCOPE:** Widening to 4 lanes with a raised median, sidewalks, curb and gutter, bicycle lanes, continuous storm drainage system, signalization, pavement markings and signing, and lighting.

**STATUS:** Estimated design completion-Fall 2016.  
Estimated Full R/W acquisition – 2017. Estimated project completion 2018.



SW 200th St

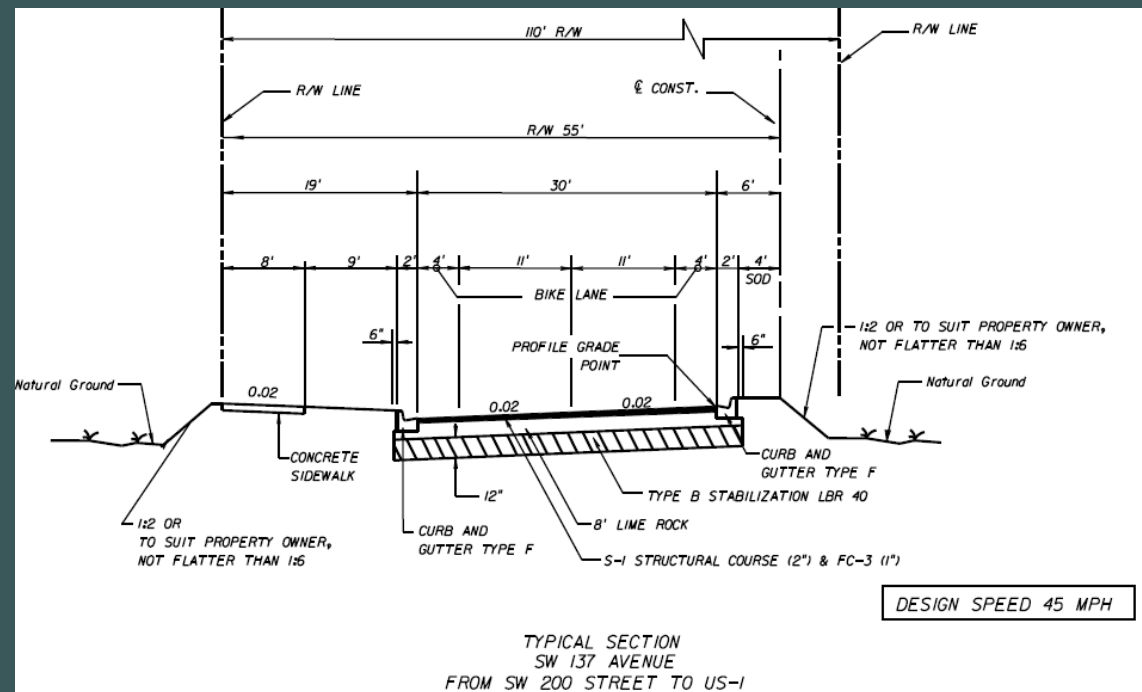
SW 134th Ave

S Dixie Hwy

## SW 137 AVENUE US-1 TO SW 200 STREET

**SCOPE:** Constructing a new 2 lane road which includes sidewalk, curb and gutter, continuous storm drainage system, signalization, pavement markings and signing, lighting, bicycle lanes, bridge crossings over C-102 canal and culvert in C-102N canal.

**STATUS:** Under design and R/W acquisition. Estimated project completion 2019.







## SW 216 STREET FROM SW 127 AVENUE TO SW 112 AVENUE (S. ALLAPATTAH RD)



**SCOPE:** The project consists of widening the existing roadway to 2 lane divided highway with a raised landscaped median, bike lanes, on-street parking, sidewalks, curb and gutter, new storm drainage system, signalization, pavement markings, signage, and lighting.

**STATUS:** Under Design and R/W Acquisition. Estimated construction completion 2019.

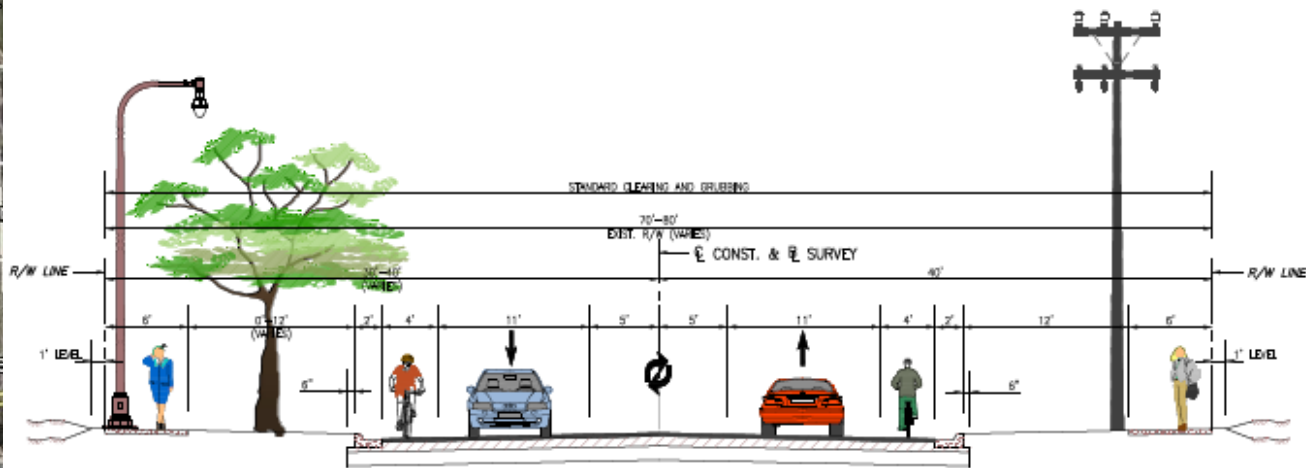
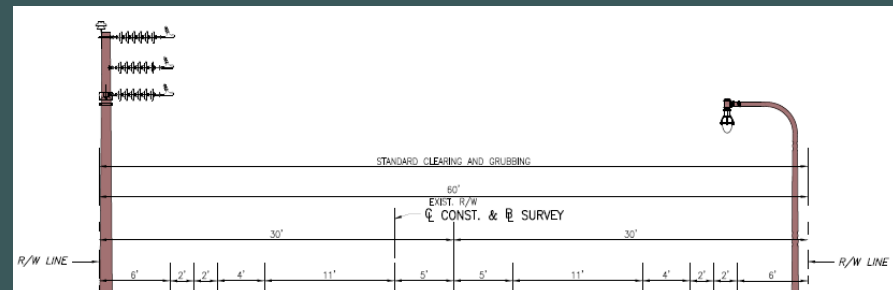
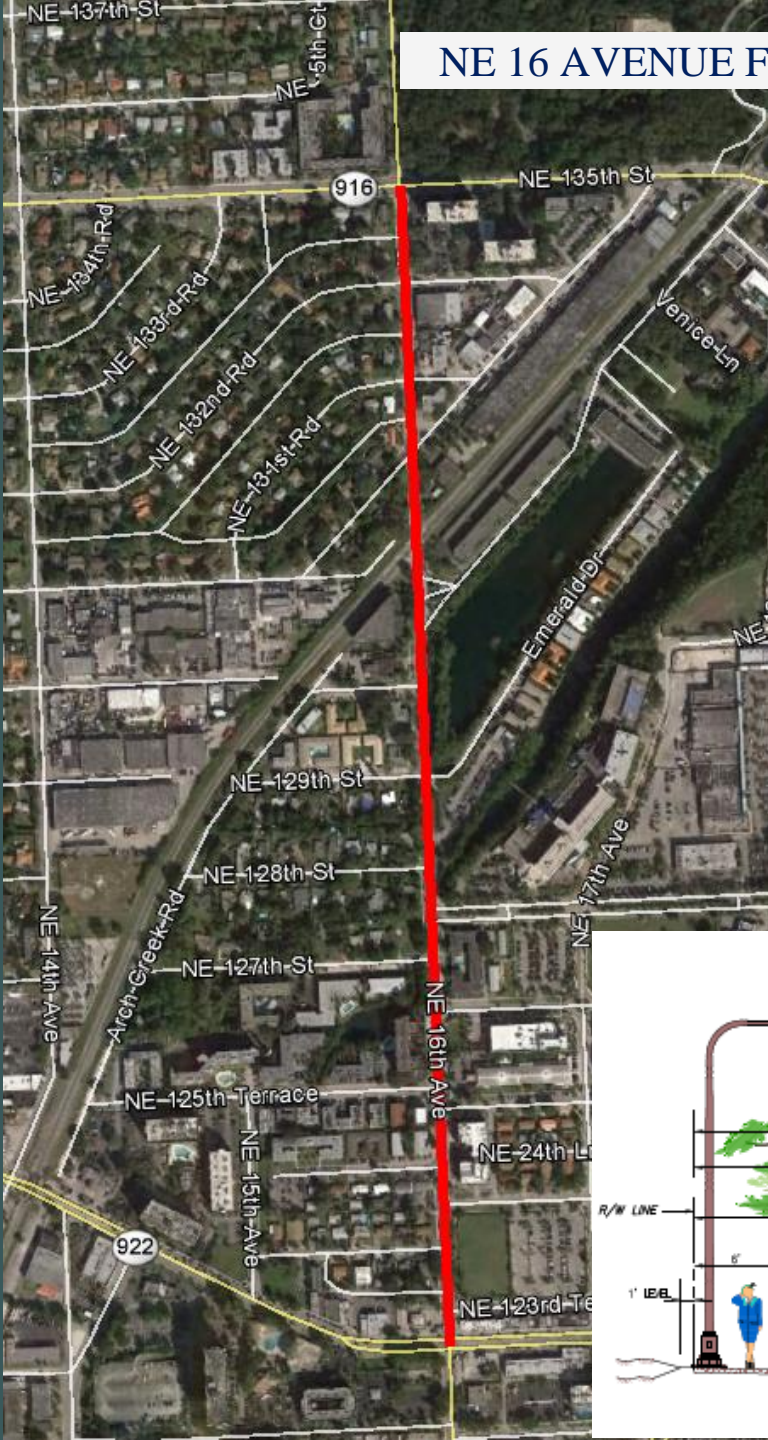




## NE 16 AVENUE FROM NE 123 STREET TO NE 135 AVENUE

**SCOPE:** The project consists of the reconstruction of the two lane roadway with a combination striped center turn lane and curved median, sidewalks, curb and gutter, bike lanes, storm drainage system, and signalization, pavement markings and signage, signal modifications, lightning (design service for the street lighting system to be provided under Project No. 20130165) and landscaping.

**STATUS:** Under design. Estimated construction completion 2017

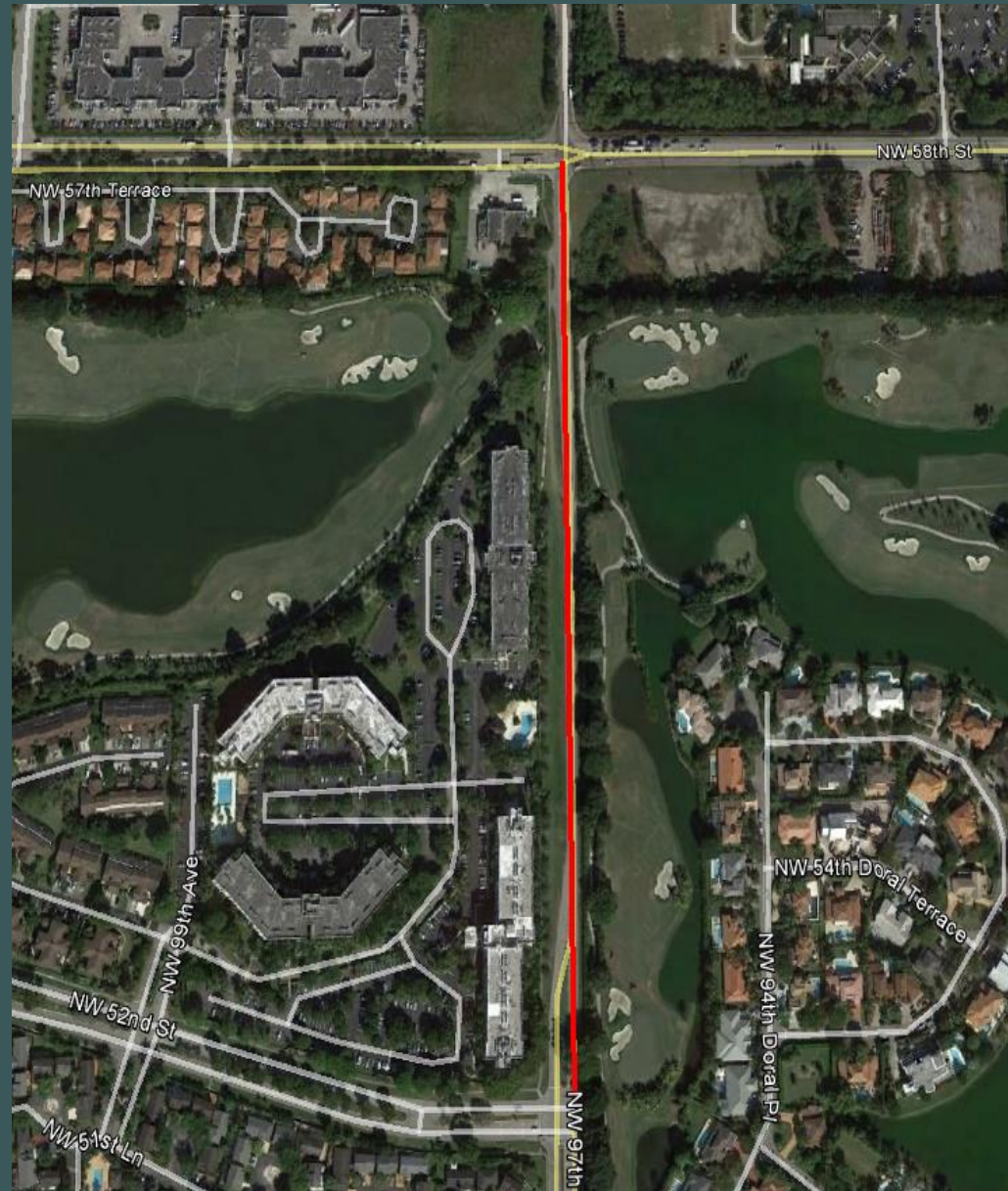




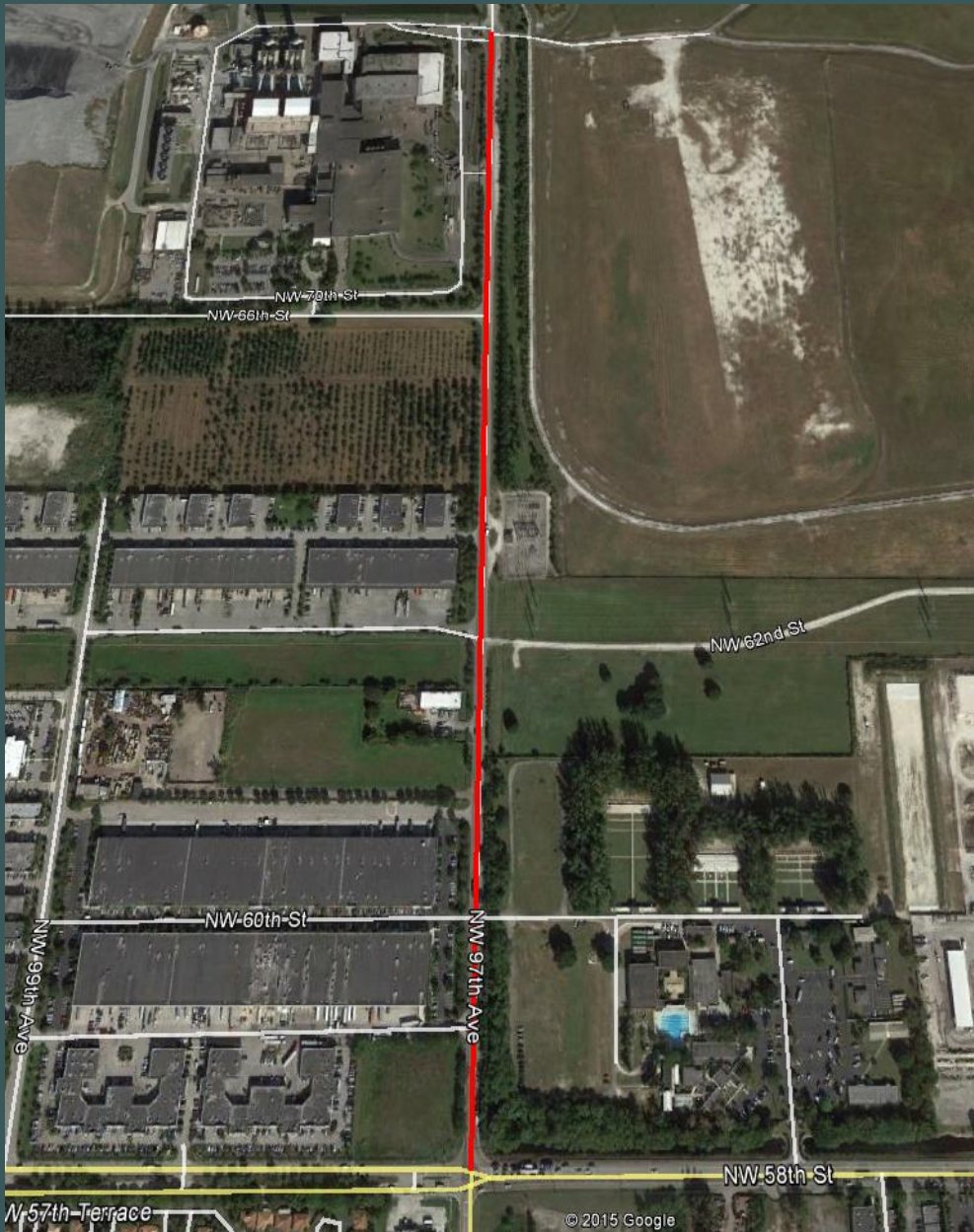
## NW 97 AVENUE FROM NW 52 STREET TO NW 58 STREET

**SCOPE:** The project includes master planning, public involvement meetings, and preparation of the complete construction plans to provide roadway improvements to NW 97 Ave which may include, widening to a 4 lane divided road, sidewalks, curb and gutters, bike lanes, storm drainage system, pavement markings and signage, signalization, lighting, and landscaping.

**STATUS:** Under Consultant Selection.  
Estimated construction completion 2018.



## NW 97 AVENUE FROM NW 58 STREET TO NW 70 STREET

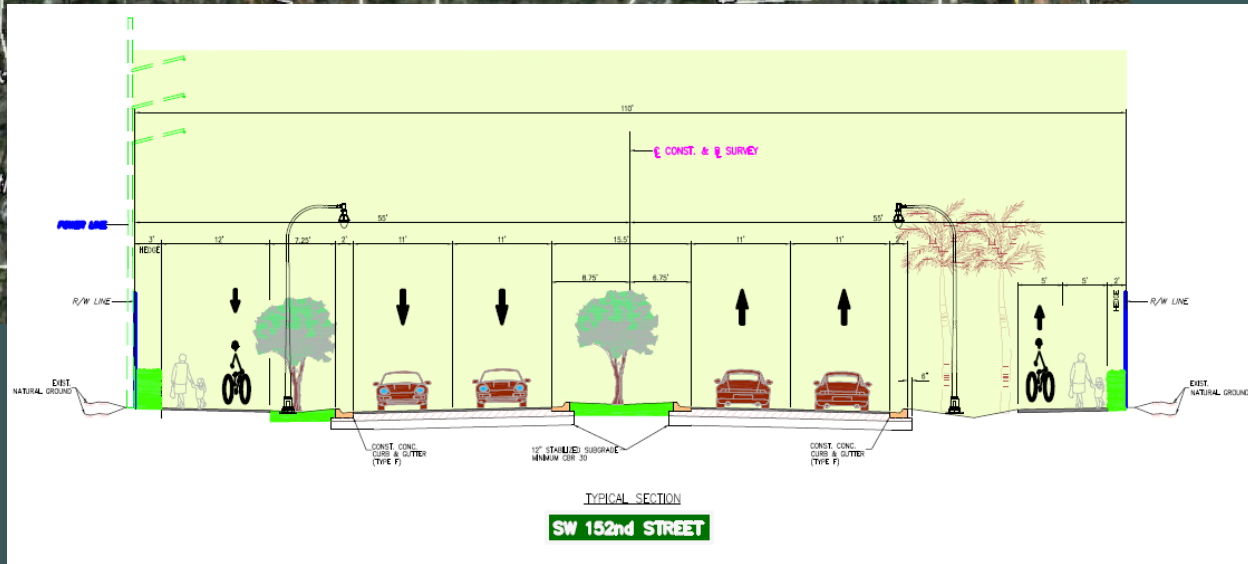
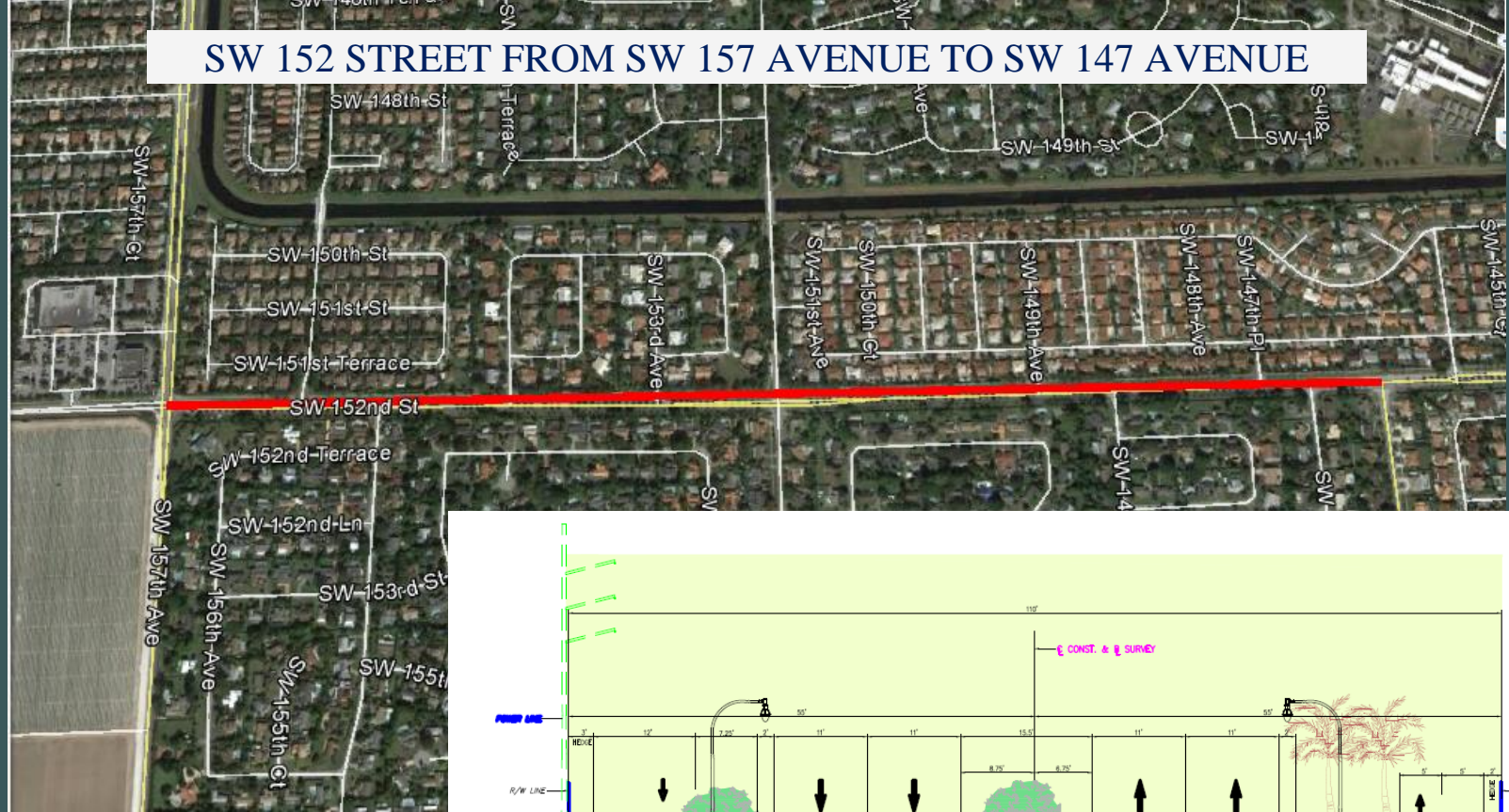


**SCOPE:** The project includes master planning, public involvement meetings, and preparation of the complete construction plans to provide roadway improvements to NW 97 Ave which may include, widening to a 4 lane divided road, sidewalks, curb and gutters, bike lanes, storm drainage system, pavement markings and signage, signalization, lighting, and landscaping.

**STATUS:** Under consultant selection.  
Estimated construction completion 2018



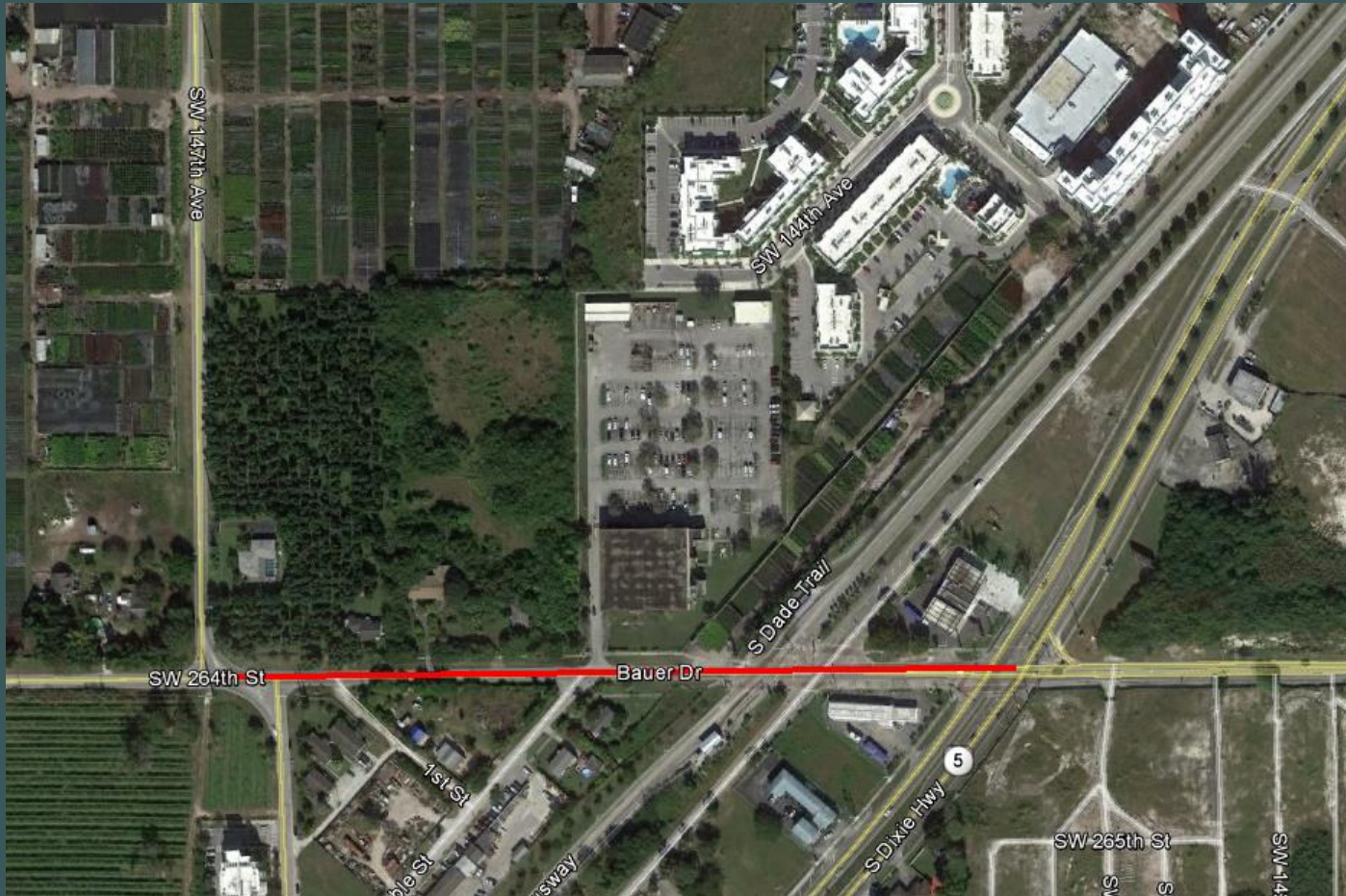
## SW 152 STREET FROM SW 157 AVENUE TO SW 147 AVENUE



**SCOPE:** The project consists of widening the existing roadway from 2 to 4 lanes with a median, Shared use paths, curb and gutter, continuous storm drainage system, landscaping, signalization, pavement markings and signage, and decorative lighting.

**STATUS:** Under Award. Estimated construction completion 2017

## SW 264 STREET FROM US-1 TO SW 147 AVENUE



**SCOPE:** The project consists of widening the existing roadway to a 2 lane divided roadway with center turn lane, bike lanes, on street parking, sidewalks, curb and gutter, storm drainage system, signalization, pavement markings, signage, and lighting.

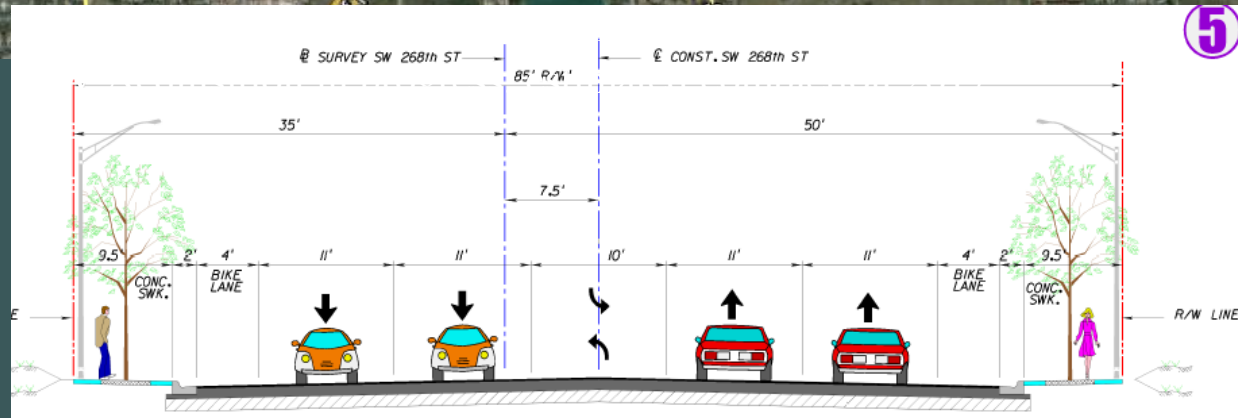
**STATUS:** Design Completed. Pending R/W Acquisition. Estimated construction completion 2018



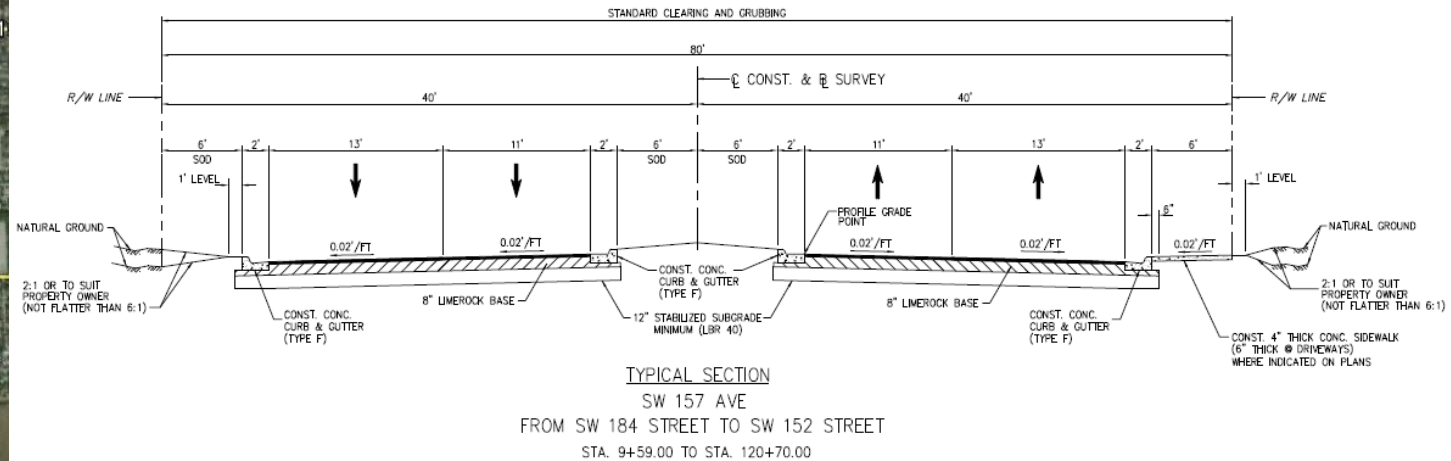
SW 268/264 STREET FROM SW 139 AVENUE AND SW 119 AVENUE (PHASE I)  
 SW 268/264 STREET FROM SW 139 AVENUE AND SW 147 AVENUE (PHASE II)

SCOPE: The project consists of constructing a new connector from intersection SW 164 St and SW 147 Ave to SW 268 St and SW 119 Ave, and provides a continuous left-turn lane along SW 268 St. The improvements may include, new road construction, widening, resurfacing, drainage, curb and gutter sidewalks, signalization, pavement markings and signage, lighting and bicycle lanes.

STATUS PHASE I:  
 STATUS PHASE II:

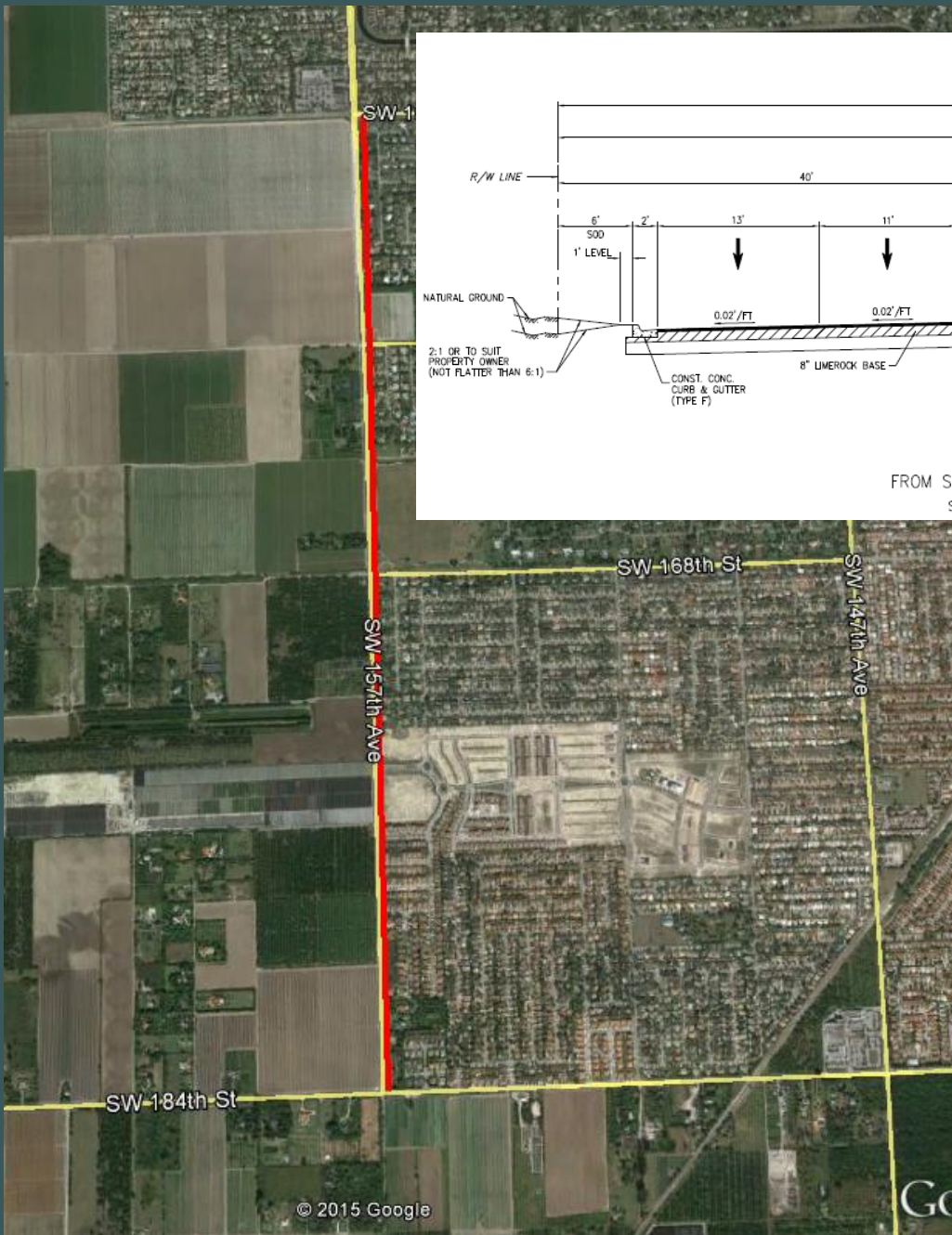


# SW 157 AVENUE FROM SW 184 STREET TO SW 152 STREET



**SCOPE:** The project consists of widening the road from 2 lane to 4 lanes, lighting, landscaping.

**STATUS:** Under Construction.  
Estimated project completion March 2016





## NW SOUTH RIVER DRIVE FROM NW 32 AVE TO NW 38 AVE

**SCOPE:** The project consists of reconstructing the existing road to a 2-lane roadway with center turn lane, parallel parking, bicycle/pedestrian shared use facility, curb and gutter, stormwater drainage system, pavement marking and signage, roadway lighting and bridge replacement at Palmer Lake.

**STATUS:** Under Consultant Selection. Estimated construction completion 2020

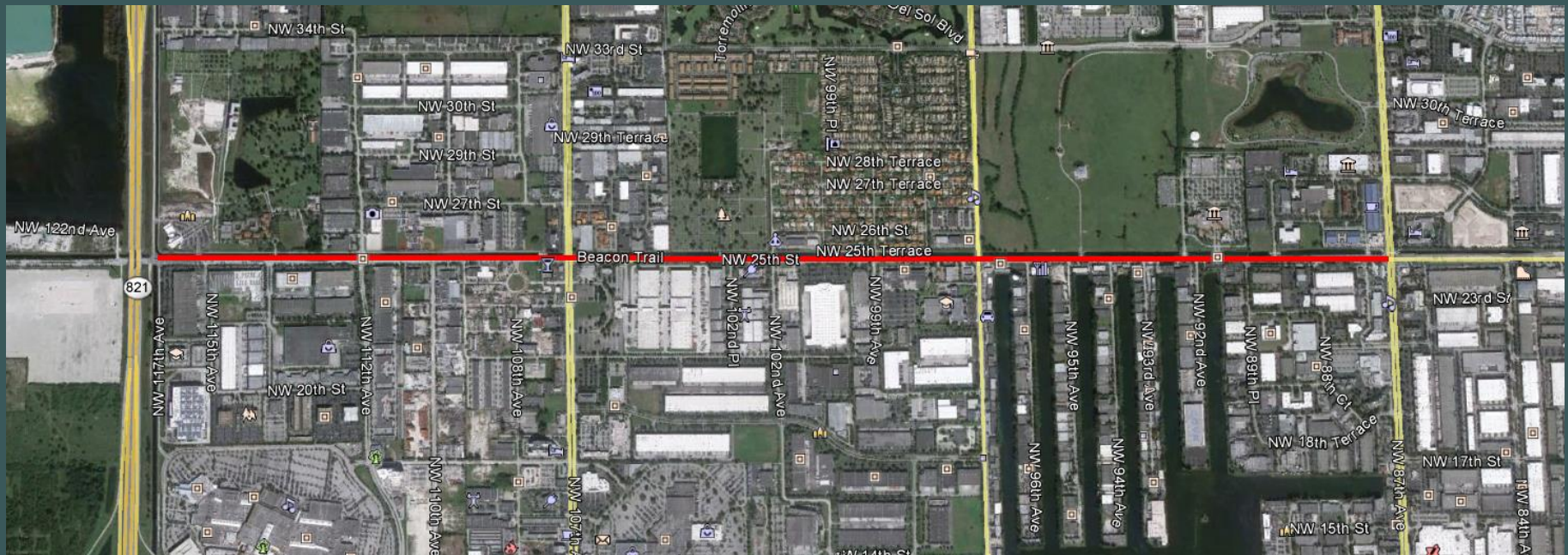




## NW 25 STREET FROM NW 117 AVE TO NW 87 AVE

**SCOPE:** Roadway reconstruction to provide a six (6) lane road with raised median, sidewalk on the south side, bicycle/pedestrian path on the north side, curb & gutter, stormwater drainage system, pavement marking and signage, traffic signalization, roadway lighting.

**STATUS:** Under Consultant Selection. Estimated construction completion 2022





	PROJECT	APPLICATION	STATUS	SCHEDULE
1	HOBIE ISLAND BEACH RENOURISHMENT	BIKE LANES AND BIKE PATH	DESIGN	END CONST: 2017 (IF FULLY FUNDED)
2	W. DIXIE HIGHWAY FROM NE 164 STREET TO NE 173 STREET	BIKE LANES	CONSULTANT SELECTION	BEGIN MASTER PLAN/DESIGN: 2015
3	NW 74 STREET FROM NW 87 AVENUE TO SR 826	BIKE LANES	CONTRACT AWARD	END CONST: 2016
4	SW 137 AVENUE FROM HEFT TO US-1	BIKE LANES	DESIGN & R/W ACQUISITION	END CONST: 2018
5	SW 137 AVENUE FROM US-1 TO SW 200 STREET	BIKE LANES	DESIGN & R/W ACQUISITION	END CONST: 2019
6	NW 58 STREET FROM NW 97 AVENUE TO SR 826	BIKE FACILITIES (BIKE LANES)	DESIGN	END CONST: 2019
7	SW 216 STREET FROM 127 AVENUE TO SW 112 AVENUE	BIKE LANES	DESIGN & R/W ACQUISITION	END CONST: 2019
8	NE 16 AVENUE FROM NE 123 STREET TO 135 AVENUE	BIKE LANES	DESIGN	END CONST: 2017
9	NW 97 AVENUE FROM NW 52 STREET TO NW 58 STREET	BIKE FACILITIES (BIKE LANES)	CONSULTANT SELECTION	END CONST: 2018
10	NW 97 AVENUE FROM NW 58 STREET TO NW 70 STREET	BIKE FACILITIES (BIKE LANES)	CONSULTANT SELECTION	END CONST: 2018
11	SW 152 STREET FROM SW 157 AVENUE TO SW 147 AVENUE	BIKE PATH (OFF ROAD BIKE LANES)	CONTRACT AWARD	END CONST: 2017
12	SW 264 STREET FROM SW 147 AVENUE TO US-1	BIKE LANES AND 12' SDWs	R/W ACQUISITION	END CONST: 2018
13	SW 264 STREET FROM US-1 TO SW 137 AVENUE	BIKE LANES	CONSTRUCTION	END CONST: 2016
14	SW 268/264 STREET FROM SW 139 AVE TO SW 119 AVENUE (PHASE I)	BIKE LANES AND 9.5' SDWs	DESIGN	END DESIGN: 2016
15	SW 268/264 STREET FROM SW 147 AVE TO SW 139 AVENUE (PHASE II)	BIKE LANES AND 9.5' SDWs	R/W ACQUISITION	END DESIGN: 2017
16	OLD CUTTLER ROAD FROM SW 136 ST/SW 63 AVE TO COCOPLUM CIRCLE	BIKE PATH	CONSTRUCTION	END CONST: 2016
17	NW SOUTH RIVER DRIVE FROM NW 32 AVE TO NW 38 AVE	BIKE PATH	CONSULTANT SELECTION	END CONST: 2019
18	NW 25 STREET FROM NW 117 AVE TO NW 87 AVE	BIKE PATH	CONSULTANT SELECTION	END CONST: 2022

THANK YOU!