

LFA[®] Industries, Inc.

Drill Chucks & Accessories



**WORLD WIDE FAME FOR
QUALITY AND EXCELLENCE**

ISO 9001 certified

***Industrial Products
Replacement Portable
Hand Tool Drills***

www.LFAusa.com

At the beginning of the 20th century, Virgile Amyot manufactured precision tools used by Swiss watchmakers. In 1925 in response to industry demands, Mr. Amyot and his sons expanded their business. Using their tool-making expertise, they manufactured a new type of drill chuck which tightens without a chuck key. It was patented in the U.S. in 1932.

Respecting the precise and exacting standards required in timepiece machining, LFA quickly established its reputation as the leading company on the continent for the production of keyless chucks.

Over the years, LFA has continued to develop new and better chucks to fit customers needs, creating a full range of chucks and other products to handle all types of fixed and portable tool applications.

In 1994, LFA patented their newest addition: a keyless chuck which can be used on all corded, cordless, and hammer drills. With this new line and LFA's other products, we can satisfy customer needs worldwide.

LFA[®]

Drill Chucks

LFA[®] Industries, Inc.
USA

Phone: 866-539-2903

Fax: 630-762-7393

Email: sales@lfausa.com














www.LFAusa.com

Famous World Wide! Established in 1925



Phone: 630-762-7391

Fax: 630-762-7393

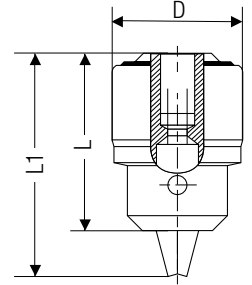
| | | Page |
|--|---|-------|
| KEY TYPE PRECISION CHUCKS & KEY TYPE SUPER CHUCKS. REPAIR PART CHART |  | 3-4 |
| PRECISION SELF-TIGHTENING CHUCKS & SUPER SELF-TIGHTENING CHUCKS. |  | 5 |
| ARBORS : MORSE TAPERS, THREADED ARBORS, R8 ARBORS |  | 6 |
| ARBORS: STRAIGHT SHANK, ARBOR REMOVAL TOOL DRIFTS: SEMIAUTOMATIC DRIFTS, STANDARD DRIFTS. |  | 7 |
| KEY TYPE CHUCKS FOR PORTABLE TOOLS : LIGHT DUTY AND MEDIUM DUTY. |  | 9 |
| KEY TYPE CHUCKS: HEAVY DUTY FOR HAMMER DRILLS. |  | 10 |
| SQUARE MOUNT IMPACT CHUCKS |  | 10 |
| KEYLESS CHUCKS FOR STANDARD AND REVERSIBLE DRILLS. ALL STEEL, GOOD, BETTER, BEST |  | 11 |
| RIGHT ANGLE ADAPTER, FLEXIBLE SHAFT LFA® POWER DRILL NIBBLER ATTACHMENT AND ACCESSORIES. |  | 12 |
| BT 40/5 AND 40/50 MACHINIST TAP WRENCH, LATHE WRENCHES |  | 13 |
| HARDWARE AND INDUSTRIAL DRILL CHUCK KEYS (STANDARD AND SELF EJECTING). |  | 14 |
| REICHEL KEY CAD-DE AND CAST IRON 4 WAY KEY |  | 15 |
| RETAIL ITEMS, CHUCK KEYS |  | 16 |
| TECHNICAL INFORMATION | | 17 |
| KEYLESS CHUCKS QUICK GUIDE (LISTED BY CAPACITY) | | 18-19 |
| KEYED CHUCKS QUICK GUIDE (LISTED BY CAPACITY) | | 20-21 |



Key Type Precision Chucks



- Plain Bearing Models
- Precision Crafted
- Heavy Duty Performance
- Made in France



Taper Mounted Chucks

| Chuck Model | Jacobs Equivalent | UPC Code | Capacity | | Tapered Mount | LFA® Key | Jacobs Key | Sleeve Dia. (D) | Length | | Weight .oz |
|-------------|-------------------|----------|-------------|---------|---------------|----------|------------|-----------------|-------------|----------|------------|
| | | | in. | mm | | | | | Closed (L1) | Open (L) | |
| 80-0A | 0A | 80002 | 0-5/32 | 0.3-4 | 0JT | T0 | K0 | .860 | 1.420 | 1.160 | 2 |
| 81-1A | 1A | 81115 | 0-1/4 | 0.3-6.5 | 1JT | T1 | K1 | 1.18 | 2.09 | 1.69 | 4 |
| 81-4A | | 81412 | 0-1/4 | 0.3-6.5 | 1JT | T4 | K7 | 1.26 | 2.09 | 1.69 | 5 |
| 43b-5A | 33 | 43331 | 1/16-1/2 | 1.5-13 | 33JT | T5 | K32 | 1.77 | 3.19 | 2.56 | 15 |
| 43-6A | 34-02 | 43205 | 0-1/2 | 0.5-13 | 2JT | T6 | K3 | 2.01 | 3.35 | 2.64 | 21 |
| 43-6A | 34-33 | 43335 | 0-1/2 | 0.5-13 | 33JT | T6 | K3 | 2.01 | 3.35 | 2.64 | 20 |
| 43-6A | 34-06 | 43601 | 0-1/2 | 0.5-13 | 6JT | T6 | K3 | 2.01 | 3.35 | 2.64 | 20 |
| 84-6A | 3A | 84635 | 0-5/8 | 0.5-16 | 3JT | T6 | K3 | 2.36 | 3.94 | 3.07 | 33 |
| 45-6A | 36 | 45308 | 3/16-3/4 | 5-20 | 3JT | T6 | K3 | 2.36 | 3.94 | 3.07 | 32 |
| 85-9A | | 85946 | 1/16-3/4 | 1.5-20 | 4JT | T9 | K4 | 2.95 | 5.12 | 4.10 | 71 |
| 85b-9A | | 85953 | 3/16-1-1/32 | 5-26 | 4JT | T9 | K4 | 2.95 | 5.12 | 4.10 | 69 |

NEW SPECIAL ORDER positive drive slot 45-6A- 3KD, UPC 45309. Jacobs 3KD.

Thread Mounted Chucks


| Chuck Model | Jacobs Equivalent | UPC Code | Capacity | | Threaded Mount | LFA® Key | A | Jacobs Key | Sleeve Dia. (D) | Length | | Weight .oz |
|-------------|-------------------|----------|----------|---------|----------------|----------|------|------------|-----------------|-------------|----------|------------|
| | | | in. | mm | | | | | | Closed (L1) | Open (L) | |
| 81-1B | 1B-3/8-7B | 81139 | 0-1/4 | 0.3-6.5 | 3/8-24 | T1 | .217 | K1 | 1.18 | 2.09 | 1.69 | 4 |
| 81-1B | | 81153 | 0-1/4 | 0.3-6.5 | 5/16-24 | T1 | .217 | K1 | 1.18 | 2.09 | 1.69 | 4 |
| 81b-13B | | 81184 | 0-5/16 | 0.3-8 | 3/8-24 | T13 | .217 | K30 | 1.42 | 2.36 | 2.01 | 8 |
| 81b-13B | | 81146 | 0-5/16 | 0.3-8 | 1/2-20 | T13 | .256 | K30 | 1.42 | 2.36 | 2.01 | 8 |
| 42-13B | 31BA-3/8 | 42383 | 0-3/8 | 0.5-10 | 3/8-24 | T13 | .217 | K30 | 1.42 | 2.36 | 2.01 | 8 |
| 42-13B | 31BA-1/2 | 42123 | 0-3/8 | 0.5-10 | 1/2-20 | T13 | .256 | K30 | 1.42 | 2.36 | 2.01 | 8 |
| 82-2B | 2BA-3/8 | 82235 | 0-3/8 | 0.5-10 | 3/8-24 | T2 | .217 | K2 | 1.67 | 2.88 | 2.32 | 13 |
| 82b-5B | 32BA-1/2 | 82518 | 0-3/8 | 0.5-10 | 1/2-20 | T5 | .256 | K32 | 1.77 | 3.15 | 2.48 | 15 |
| 43b-5B | 33BA-3/8 | 43380 | 1/16-1/2 | 1.5-13 | 3/8-24 | T5 | .217 | K32 | 1.77 | 3.15 | 2.48 | 15 |
| 43b-5B | 33BA-1/2 | 43229 | 1/16-1/2 | 1.5-13 | 1/2-20 | T5 | .256 | K32 | 1.77 | 3.15 | 2.48 | 15 |
| 43b-5B | 33BA-5/8 | 43168 | 1/16-1/2 | 1.5-13 | 5/8-16 | T5 | .256 | K32 | 1.77 | 3.15 | 2.48 | 16 |
| 43-6B | | 43120 | 0-1/2 | 0.5-13 | 1/2-20 | T6 | .256 | K3 | 2.01 | 3.35 | 2.64 | 21 |
| 43-6B | | 43588 | 0-1/2 | 0.5-13 | 5/8-16 | T6 | .256 | K3 | 2.01 | 3.35 | 2.64 | 21 |
| 84-6B | 3B-5/8 | 84659 | 0-5/8 | 0.5-16 | 5/8-16 | T6 | .256 | K3 | 2.36 | 3.94 | 3.07 | 35 |
| 45-6B | 36B-5/8 | 45582 | 3/16-3/4 | 5-20 | 5/8-16 | T6 | .256 | K3 | 2.36 | 3.94 | 3.07 | 33 |
| 45-6B | 36B-3/4 | 45346 | 3/16-3/4 | 5-20 | 3/4-16 | T6 | .256 | K3 | 2.36 | 3.94 | 3.07 | 33 |

All models drilled for retaining screw. Information concerning LFA® chuck keys are shown on page 14. Thread Mounted Chucks


See Page 4 for Chuck Repair Details

Precision Chucks
Key-Type Drill Chucks


REPAIR PARTS: Specify the chuck number and part name needed



Jaws & Nut Set



Sleeve

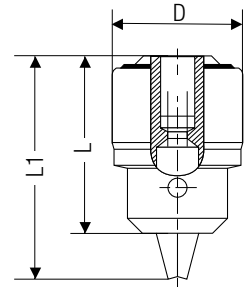


Key

Models:
42, 43, 81, 82, 81b, 82b
84, 85, 45, 42b

LFA® Key Type Super Chucks

- Equipped with a sliding ring
- All main components hardened & ground for accuracy
- Super holding and friction free movement for heavy drilling
- Made in France



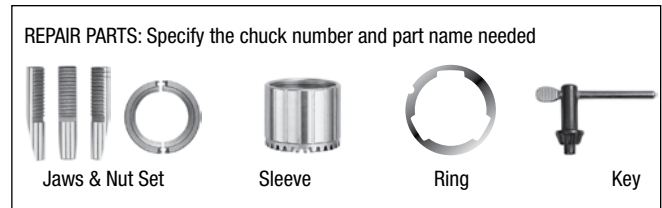
Taper Mounted Chucks

| Chuck Model | Substitute for Jacobs | UPC Code | Capacity | | Tapered Mount | LFA® Key | Jacobs Key | Sleeve Dia. (D) | Length | | Weight .OZ |
|-----------------|-----------------------|----------|-------------|--------|---------------|----------|------------|-----------------|-------------|----------|------------|
| | | | in. | mm | | | | | Closed (L1) | Open (L) | |
| 81BS-13A | 8-1/2N | 81160 | 0-5/16 | .3-8 | 2shJT | T13 | K30 | 1.42 | 2.36 | 2.01 | 8 |
| 82BS-5A | 11N | 82556 | 0-3/8 | .5-10 | 2JT | T5 | K32 | 1.77 | 3.15 | 2.48 | 15 |
| 43S-6A | | 43977 | 0-1/2 | .5-13 | 33JT | T6 | K3 | 2.01 | 3.35 | 2.64 | 21 |
| 83S-6A | 14N | 83638 | 0-1/2 | .5-13 | 3JT | T6 | K3 | 2.36 | 3.94 | 3.07 | 33 |
| 84S-6A | 16N | 84556 | 0-5/8 | .5-16 | 3JT | T6 | K3 | 2.36 | 3.94 | 3.07 | 33 |
| 85S-9A | 18N | 85977 | 1/16-3/4 | 1.5-20 | 4JT | T9 | K4 | 2.95 | 5.12 | 4.10 | 71 |
| 85BS-9A | 20N | 85960 | 3/16-1-1/32 | 5-26 | 4JT* | T9 | K4 | 2.95 | 5.12 | 4.10 | 69 |

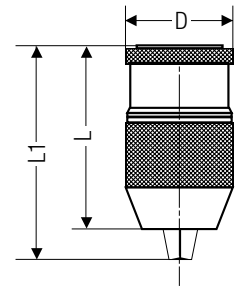
* LFA 4MT/Jacobs 5MT

Repair Parts for LFA Keyed Drill Chucks

| LFA Chuck Repair Part # | Repair Part Description | LFA Chuck |
|-------------------------|-------------------------|------------|
| RP-42JN | 42 Jaw & Nut Set | 42 series |
| RP-43JN | 43 Jaw & Nut Set | 43 series |
| RP-45JN | 45 Jaw & Nut Set | 45 series |
| RP-81JN | 81 Jaw & Nut Set | 81 series |
| RP-81R | 81 Ring | 81 series |
| RP-82JN | 82 Jaw & Nut Set | 82 series |
| RP-82R | 82 Ring | 82 series |
| RP-83JN | 83 Jaw & Nut Set | 83 series |
| RP-83R | 83 Ring | 83 series |
| RP-84JN | 84 Jaw & Nut Set | 84 series |
| RP-84R | 84 Ring | 84 series |
| RP-84S | 84 Sleeve | 84 series |
| RP-85JN | 85 Jaw & Nut Set | 84 series |
| RP-85R | 85 Ring | 85 series |
| RP-85S | 85 Sleeve | 85 series |
| RP-85BJN | 85S Jaw & Nut Set | 85S series |
| RP-85BR | 85B Ring | 85B series |



- Self-Tightening
- Light Weight
- Ball Bearing - Hand Locking
- Made in France



Taper Mounted Chucks

| Chuck Model | UPC Code | Capacity | | Tapered Mount | Sleeve Dia. (D) | Length | | Weight .oz |
|-----------------|----------|----------|--------|---------------|-----------------|-------------|----------|------------|
| | | in. | mm | | | Closed (L1) | Open (L) | |
| 61BA-1JT | 61018 | 0-5/16 | 0.5-8 | 1JT | 1.42 | 2.83 | 2.60 | 12 |
| 62A-2JT | 61028 | 0-3/8 | 0.5-10 | 2JT | 1.42 | 3.15 | 2.91 | 12 |
| 63A-33JT | 63339 | 0-1/2 | 0.5-13 | 33JT | 1.57 | 4.02 | 3.62 | 18 |
| 63A-6JT | 63067 | 0-1/2 | 0.5-13 | 6JT | 1.57 | 4.02 | 3.62 | 19 |
| 64A-33JT | 64330 | 1/8-5/8 | 3.16 | 33JT | 1.81 | 4.33 | 3.90 | 26 |
| 64A-6JT | 64064 | 1/8-5/8 | 3.16 | 6JT | 1.81 | 4.33 | 3.90 | 26 |

- Self-Tightening
- Precision Quality
- For All Drilling Applications
- Ball Bearing - Hand Locking
- Made in France

Super Holding!

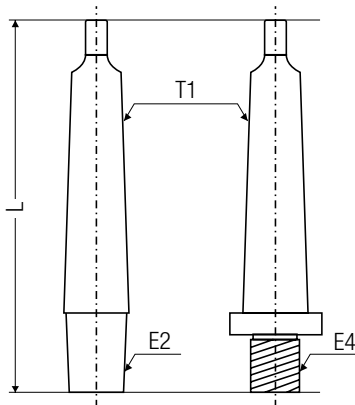


Taper Mounted Chucks

| Chuck Model | Jacobs Equivalent | UPC Code | Capacity | | Tapered Mount | Sleeve Dia. (D) | Length | | Weight .oz |
|--------------------|-------------------|----------|----------|-------|---------------|-----------------|-------------|----------|------------|
| | | | in. | mm | | | Closed (L1) | Open (L) | |
| 71BSA-2shJT | 80-J2S | 71228 | 0-5/16 | .3-8 | 2shJT | 1.42 | 2.88 | 2.56 | 13 |
| 72SA-2JT | 100-J2 | 72021 | 0-3/8 | .5-10 | 2JT | 1.77 | 3.66 | 3.19 | 26 |
| 73SA-33JT | 130-J33 | 73332 | 0-1/2 | .5-13 | 33JT | 2.03 | 4.14 | 3.66 | 38 |
| 73SA-6JT | 130-J6 | 73066 | 0-1/2 | .5-13 | 6JT | 2.03 | 4.14 | 3.66 | 38 |
| 74SA-6JT | 160-J6 | 74063 | 1/8-5/8 | 3-16 | 6JT | 2.27 | 4.33 | 3.78 | 50 |



Morse Taper Arbor



Morse Taper Arbors

| Arbor Model | UPC Code | T1* Morse | E2* Jacobs | L | Weight .oz |
|-------------|----------|-----------|------------|------|------------|
| 1MT0 | 91008 | 1 | 0JT | 3.19 | 2 |
| 1MT1 | 91107 | 1 | 1JT | 3.39 | 2 |
| 1MT2 | 91219 | 1 | 2JT** | 3.62 | 2 |
| 1MT33 | 91336 | 1 | 33JT | 3.78 | 3 |
| 1MT6 | 91602 | 1 | 6JT | 3.78 | 3 |
| 1MT3 | 91305 | 1 | 3JT | 4.02 | 5 |
| 2MT0 | 92005 | 2 | 0JT | 3.78 | 4 |
| 2MT1 | 92104 | 2 | 1JT | 3.98 | 4 |
| 2MT2 | 92203 | 2 | 2JT** | 4.22 | 5 |
| 2MT33 | 92333 | 2 | 33JT | 4.41 | 6 |
| 2MT6 | 92609 | 2 | 6JT | 4.37 | 6 |
| 2MT3 | 92302 | 2 | 3JT | 4.61 | 7 |
| 2MT4 | 92401 | 2 | 4JT | 5.04 | 12 |
| 3MT1 | 93101 | 3 | 1JT | 4.73 | 9 |
| 3MT2 | 93200 | 3 | 2JT** | 4.96 | 10 |
| 3MT33 | 93330 | 3 | 33JT | 5.12 | 11 |
| 3MT6 | 93606 | 3 | 6JT | 5.12 | 11 |
| 3MT3 | 93300 | 3 | 3JT | 5.36 | 12 |
| 3MT4 | 93408 | 3 | 4JT | 5.79 | 17 |
| 3MT5 | 93507 | 3 | 5JT | 5.91 | 22 |
| 4MT2 | 94207 | 4 | 2JT** | 5.99 | 21 |
| 4MT33 | 94337 | 4 | 33JT | 6.15 | 22 |
| 4MT6 | 94603 | 4 | 6JT | 6.15 | 22 |
| 4MT3 | 94306 | 4 | 3JT | 6.38 | 23 |
| 4MT4 | 94405 | 4 | 4JT | 6.82 | 28 |
| 4MT5 | 94504 | 4 | 5JT | 6.93 | 33 |
| 5MT3 | 95303 | 5 | 3JT | 7.56 | 55 |
| 5MT4 | 95402 | 5 | 4JT | 8.12 | 60 |
| 5MT5 | 95501 | 5 | 5JT | 8.12 | 65 |

* Dimensions p 17.

** Suitable for chucks with 2 short JT.

Threaded Arbors

| Arbor Model | UPC Code | T1* Morse | E4* UNF | L | Weight .oz |
|-------------|----------|-----------|----------|------|------------|
| 2MT3/8 | 92388 | 2 | 3/8 – 24 | 3.98 | 5 |
| 2MT1/2 | 92128 | 2 | 1/2 – 20 | 4.10 | 5 |
| 2MT5/8 | 92586 | 2 | 5/8 – 16 | 4.18 | 6 |

* Dimensions p 17.

R8 Arbors

| Arbor Model | UPC Code | Jacobs Taper | Weight .oz |
|-------------|----------|--------------|------------|
| R8-2JT | 98021 | 2JT | 14.5 |
| R8-3JT | 98304 | 3JT | 15.7 |
| R8-33JT | 98342 | 33JT | 14.7 |
| R8-4JT | 98369 | 4JT | 14.5 |
| R8-6JT | 98450 | 6JT | 14.5 |



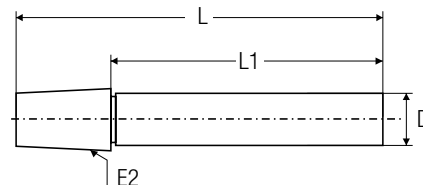
Threaded Arbor



R8 Arbor

Straight Shank Arbors

| Arbor Model | UPC Code | D | L1 | E2 Jacobs | L | Weight .oz |
|-------------|----------|-------|------|-----------|------|------------|
| 1/2ST0 | 91206 | 0.500 | 2.50 | 0JT | 3.11 | 2 |
| 1/2ST1 | 91213 | 0.500 | 2.50 | 1JT | 3.35 | 2 |
| 1/2ST2 | 91220 | 0.500 | 2.50 | 2JT | 3.55 | 3 |
| 1/2ST33 | 91244 | 0.500 | 2.50 | 33JT | 3.74 | 4 |
| 1/2ST6 | 91268 | 0.500 | 2.50 | 6JT | 3.74 | 4 |
| 1/2ST3 | 91237 | 0.500 | 2.50 | 3JT | 3.98 | 5 |
| 5/8ST1 | 95815 | 0.625 | 2.50 | 1JT | 3.35 | 3 |
| 5/8ST2 | 95822 | 0.625 | 2.50 | 2JT | 3.59 | 4 |
| 5/8ST33 | 95891 | 0.625 | 2.50 | 33JT | 3.74 | 5 |
| 5/8ST6 | 95860 | 0.625 | 2.50 | 6JT | 3.74 | 5 |
| 5/8ST3 | 95839 | 0.625 | 2.50 | 3JT | 3.98 | 7 |
| 5/8ST4 | 95846 | 0.625 | 2.50 | 4JT | 4.41 | 11 |
| 3/4ST2 | 93422 | 0.750 | 3.00 | 2JT | 4.10 | 7 |
| 3/4ST33 | 93415 | 0.750 | 3.00 | 33JT | 4.26 | 7 |
| 3/4ST6 | 93460 | 0.750 | 3.00 | 6JT | 4.26 | 8 |
| 3/4ST3 | 93439 | 0.750 | 3.00 | 3JT | 4.49 | 9 |
| 3/4ST4 | 93442 | 0.750 | 3.00 | 4JT | 4.93 | 14 |
| 1ST 3 | 91332 | 1.000 | 3.00 | 3JT | 4.53 | 14 |
| 1ST 4 | 91404 | 1.000 | 3.00 | 4JT | 4.96 | 18 |



Arbor Removal Tool

Made from hardened cast steel.

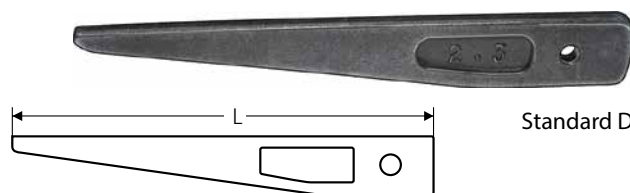
| UPC Code | For Arbor Size | | Lg. In. |
|----------|----------------|---------|---------|
| 16005 | J6 | J2, J33 | 8 |



Arbor Removal Tool

Standard Drifts

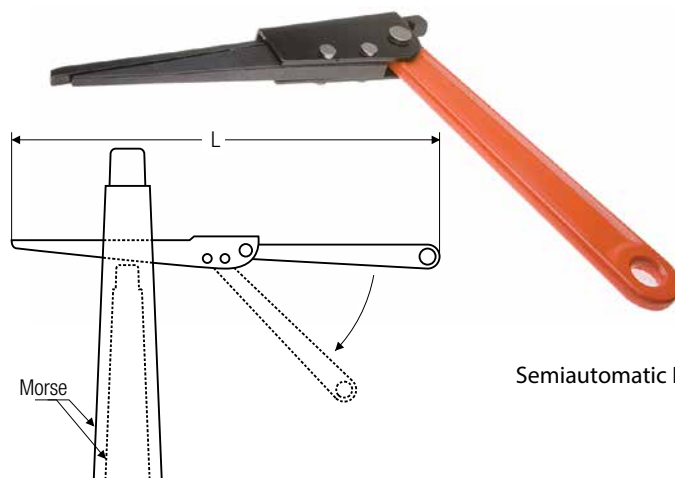
| Model | UPC Code | Morse | | L | Weight .oz |
|-------|----------|-------|------|-------|------------|
| | | min. | max. | | |
| 1MT | 11006 | 1 | 2 | 4.67 | 1 |
| 2MT | 12003 | 2 | 3 | 5.75 | 3 |
| 3MT | 13000 | 3 | 4 | 7.84 | 6 |
| 4MT | 14007 | 4 | 5 | 9.89 | 12 |
| 5MT | 15004 | 5 | 6 | 11.03 | 25 |



Standard Drift

Semiautomatic Drifts

| Model | UPC Code | Morse | | L | Weight .oz |
|-------|----------|-------|------|-------|------------|
| | | min. | max. | | |
| #1 | 11136 | 1 | 3 | 12.61 | 12 |
| #2 | 12461 | 4 | 6 | 14.97 | 19 |



Semiautomatic Drift



Chucks for Portable Drills



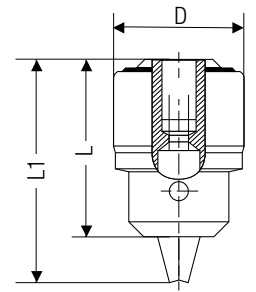
St. Charles, IL USA
Always wear safety glasses when drilling.
Chuck Keys Included
One year manufacturers warranty
Made in France
www.LFAusa.com



Key Type Chucks for Portable Drills



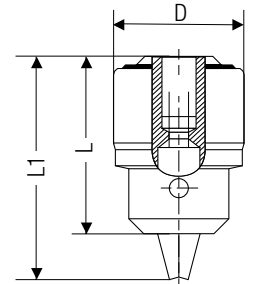
- Light Duty
- Designed for O.E.M and D.I.Y
- Portable Drills - All Moving Parts Hardended for
- Maximum Tool Life
- Made in France



Light Duty Chucks

| Chuck Model | Jacob Eq. | LFA UPC | Capacity | | Thread Mount | A | Chuck Key Included | Sleeve Dia. D | oz. |
|-------------|-----------|---------|----------|--------|--------------|------|--------------------|---------------|-----|
| | | | In. | mm | | | | | |
| 4200-B1 | 30247 | 42086 | 0-3/8 | .5-10 | 3/8 -24 | .217 | TB1 / KG | 1.30 | 6 |
| 4200-B1 | | 42000 | 0-3/8 | .5-10 | 1/2 -20 | .256 | TB1 /KG | 1.30 | 6 |
| 4220-B13 | 30598 | 42204 | 1/6-1/2 | 1.5-13 | 3/8 -24 | .217 | TB13 /KK | 1.65 | 11 |
| 4220-B13 | 30602 | 42208 | 1/16-1/2 | 1.5-13 | 1/2 -20 | .256 | TB13 /KK | 1.65 | 11 |
| 4100AO | 30243 | 84574 | 1/16-1/4 | .3-6.5 | 3/8-24 | .217 | Key included | 1.61 | 3.5 |
| 4200AO | 30247 | 98038 | 1/16-3/8 | .5-10 | 3/8-24 | .217 | Key included | 1.13 | 5.0 |
| 4220AO | 30598 | 98335 | 1/16-1/2 | 1.5-13 | 3/8-24 | .217 | Key included | 1.61 | 11 |
| 4221AO | 30602 | 77422 | 1/16-1/2 | 1.5-13 | 1/2-20 | .217 | Key included | 1.61 | 11 |

- Medium Duty
- Designed for professional type portable drills
- All moving parts are hardened for maximum tool life
- All threaded models are drilled for reversing units
- Made in France



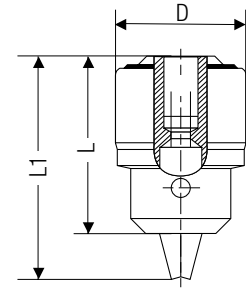
Medium Duty Chucks

| Chuck Model | Substitute for Jacobs | UPC Code | Capacity | | Tapered Mount | LFA® Key | Jacobs Key | Sleeve Dia. (D) | Length | | Weight .OZ |
|-------------|-----------------------|----------|----------|--------|---------------|----------|------------|-----------------|-------------|----------|------------|
| | | | in. | mm | | | | | Closed (L1) | Open (L) | |
| 412-B1 | | 41201 | 0-5/16 | .3-8 | 1JT | TB1 | KG | 1.18 | 2.13 | 1.73 | 4 |
| 420-B1 | | 42031 | 0-3/8 | .5-10 | 3/8-24 | TB1 | KG | 1.42 | 2.36 | 2.01 | 8 |
| 420-B1 | | 42017 | 0-3/8 | .5-10 | 1/2-20 | TB1 | KG | 1.42 | 2.36 | 2.01 | 8 |
| 422-B13 | | 42239 | 1/16-1/2 | 1.5-13 | 3/8-24 | TB13 | KK | 1.65 | 2.88 | 2.32 | 13 |
| 422-B13 | 31052 | 42215 | 1/16-1/2 | 1.5-13 | 1/2-20 | TB13 | KK | 1.65 | 2.88 | 2.32 | 13 |
| 422-B13 | | 42291 | 1/16-1/2 | 1.5-13 | 3/32 | TB13 | KK | 1.65 | 3.03 | 2.44 | 13 |



Key-Type Heavy Duty Chucks & SDS Accessories

- Designed for Use on Percussion Type Drill Units
- Precision Crafted with a Sliding Ring to Absorb Vibrations Than can Cause Chuck to Loosen Up.
- All Parts Are Hardened for Maximum Tool Life



Note : SDS Adapter can be used with 1/2-20 threaded model see below.

Heavy Duty Chucks

| Chuck Model | UPC Code | Capacity | | Threaded Mount | LFA® Key | Jacobs Key | Sleeve Dia. (D) | Length | | Weight .OZ |
|----------------|----------|----------|--------|----------------|----------|------------|-----------------|-------------|----------|------------|
| | | in. | mm | | | | | Closed (L1) | Open (L) | |
| 43BZ-5B | 43984 | 1/16-1/2 | 1.5-13 | 3/8-24 | T5 | K32 | 1.77 | 3.15 | 2.48 | 15 |
| 43BZ-5B | 43991 | 1/16-1/2 | 1.5-13 | 1/2-20 | T5 | K32 | 1.77 | 3.15 | 2.48 | 15 |
| 44Z-6B | 44127 | 3/32-5/8 | 2.5-16 | 1/2-20 | T6 | K3 | 2.01 | 3.35 | 2.64 | 21 |
| 44Z-6B | 44585 | 3/32-5/8 | 2.5-16 | 5/8-16 | T6 | K3 | 2.01 | 3.35 | 2.64 | 20 |

- Square Drive
- Keyless Design
- For Standard Impact Tools
- Transforms the Wrench into an Efficient Drilling Tool with Super Holding Power



Impact Chucks Square Mount

| Chuck Model | Jacobs Equivalent | Reichel UPC | Capacity | | Mount | Length | | Weight .OZ |
|--------------------|-------------------|-------------|-----------|--------|-------------|--------|--------|------------|
| | | | in. | mm | | Closed | Open | |
| WC3R3 | | 00330 | 03/32-3/8 | 2.5-10 | 3/8 SQ. DR. | 2-1/8 | 2-3/32 | 9.5 |
| WC5R5 | 64-J9 | 00521 | 1/8-1/2 | 3-13 | 1/2 SQ. DR. | 2-9/32 | 2-5/8 | 14 |
| Endurer 3/8 | | 05513 | 3/32-3/8 | 2.5-10 | 3/8 SQ. DR. | 1.77 | 3.15 | 13.1 |
| Endurer 1/2 | | 05506 | 3/32-3/8 | 2.5-10 | 1/2 SQ. DR. | 1.77 | 3.15 | 13.1 |

Keyless Chucks for Portable Tools



- Our Newest Chuck with Patented Locking System
- High Speed Steel Jaws = A
- Carbide Jaw Inserts = CAR



Carbide Chuck Jaws, Steel Shell with Double Sleeve

| Chuck Model | UPC Code | Capacity | | Mount | Sleeve Dia. | Length | | Weight .OZ |
|-------------|----------|----------|--------|---------|-------------|--------|------|------------|
| | | in. | mm | | | Closed | Open | |
| *5322A | 53211 | 1/16-1/2 | 1.5-13 | 1/2 -20 | 1.67 | 2.94 | 2.50 | 11.4 |
| *5322A | 53235 | 1/16-1/2 | 1.5-13 | 3/8 -24 | 1.67 | 2.94 | 2.50 | 11.4 |
| *5322ACAR | 53310 | 1/16-1/2 | 1.5-13 | 1/2 -20 | 1.67 | 2.94 | 2.50 | 11.6 |
| *5322ACAR | 53334 | 1/16-1/2 | 1.5-13 | 3/8 -24 | 1.67 | 2.94 | 2.50 | 11.6 |
| 610 mini | 61001 | 0-1/4 | .3-6.5 | 3/8 -24 | 2.44 | 2.20 | 1.25 | 9 |

*With patented ratchet locking system for easy locking and releasing, U.S. patent 5458345



Solid Steel Construction Ball Bearing Design for Superior Holding - Threaded and Taper

| Chuck Model | UPC Code | Capacity | | Mount | Sleeve Dia. (D) | Length | | Weight .OZ |
|-------------|----------|----------|--------|---------|-----------------|-----------|--------|------------|
| | | in. | mm | | | Closed L1 | Open L | |
| 520 | 52030 | 0-3/8 | .5-10 | 3/8-24 | 1.58 | 2.40 | 2.01 | 9 |
| 520 | 52016 | 0-3/8 | .5-10 | 1/2 -20 | 1.58 | 2.40 | 2.01 | 9 |
| 520 | 52023 | 0-3/8 | .5-10 | 2JT | 1.58 | 2.40 | 2.01 | 9 |
| 522 | 52238 | 1/16-1/2 | 1.5-13 | 3/8-24 | 1.67 | 2.92 | 2.32 | 14 |
| 522 | 52214 | 1/16-1/2 | 1.5-13 | 1/2 -20 | 1.67 | 2.92 | 2.32 | 13 |
| 522 | 52290 | 1/16-1/2 | 1.5-13 | 2JT | 1.67 | 2.92 | 2.32 | 13 |
| 522 | 52283 | 1/16-1/2 | 1.5-13 | 33JT | 1.67 | 3.03 | 2.44 | 14 |



Light Weight Design, Ball Bearing for Superior Holding, For Regular and Hammer Applications

| Chuck Model | UPC Code | Capacity | | Mount | Sleeve Dia. (D) | Length | | Weight .OZ |
|-------------|----------|----------|--------|---------|-----------------|-----------|--------|------------|
| | | in. | mm | | | Closed L1 | Open L | |
| 5200 | 52043 | 0-3/8 | .5-10 | 3/8 -24 | 1.65 | 2.40 | 2.05 | 6 |
| 5200 | 52009 | 0-3/8 | .5-10 | 1/2 -20 | 1.65 | 2.40 | 2.05 | 6 |
| *5220L | 52269 | 1/16-1/2 | 1.5-13 | 3/8 -24 | 1.67 | 2.88 | 2.32 | 10 |
| *5220L | 52252 | 1/16-1/2 | 1.5-13 | 1/2 -20 | 1.67 | 2.88 | 2.32 | 10 |

* With patented ratchet locking system for easy locking and releasing, U.S. patent 5458345.



| Accessory | Detailed Information | LFA UPC | Capacity in. | Capacity mm | Mount | Special Use | Weight .oz |
|------------------------------------|--|---------|--------------|-------------|--------|---|------------|
| Adapter SDS | For Quick Change Drilling Applications | 79235 | 1/16-1/2 | 1.5-13 | 1/2-20 | All Steel | 1.6 |
| Converter SDS | Convert Hammer drill into SDS mount | 79457 | | | 1/2-20 | All Steel | 5.7 |
| Right Angle Adapter w/chuck | Handles speeds up to 2500 RPM with oil hole | 79037 | | | 3/8-24 | All Steel – Heavy Duty | 12.2 |
| Flexible Shaft | Used with drill bits & mini tools for very accurate operations | 79447 | 3/32-3/8 | 2.5-10 | | Length 40" – 3600 RPM | |
| Nibbler | Punch cutting Speed 3000 max | 79211 | | | | Sunroofs, wheel arches, corrugated sheets | 10.0 |
| Nibbler Punch | Spare Punch replacement | 79228 | | | | Sold separate | 1. |
| Square Hole Master | Produce square hole in all timbers | 79846 | | | | Hammer drill must be used in hammer mode | |



| Model | LFA UPC | Application |
|----------------------------------|---------|--------------------------------------|
| 1/4 Hex-3/8-24 Thread | 31431 | Screw driver to chuck mount |
| Screw Replacement For SDS | 91455 | 6 X 00 left hand thread |
| Chuck Conversion | 93824 | 3/8 -24 straight thread |
| Chuck Conversion | 91226 | 1/2 -20 male X 3/8 -24 male thread |
| Chuck Conversion | 12386 | 1/2 -20 male x 3/8 -24 female thread |

| LFA Part Number | Description |
|-----------------|---|
| BT40 1/2 | BT40 13MM KEYLESS DRILL CHUCK |
| CV40 1/2 | CAT 40 1/32- 1/2 T.I.R. 002 KEYLESS DRILL CHUCK |
| CV40 5/8 | CAT 40 1/8-5/8 T.I.R. 002 KEYLESS DRILL CHUCK |
| CV50 1/2 | CAT50 1/32-1/2 T.I.R. 002 KEYLESS DRILL CHUCK |
| CV50 5/8 | CAT50 1/8-5/8 T.I.R. 002 KEYLESS DRILL CHUCK |
| CV40 JT2 | CV40 2JT |
| CV40 JT33 | CV40 33JT |
| CV40 JT6 | CV40 6JT |
| CV40 JT3 | CV40 3JT |
| CV50 JT2 | CV50 2JT |
| CV50 JT33 | CV50 33JT |
| CV50 JT6 | CV50 6JT |
| CV50 JT3 | CV50 3JT |



BT40-SDC



CV40-SDC

Reichel Lathe Wrench Standard or Self Ejecting

| Lathe Wrench | Reichel UPC | Model |
|----------------------|-------------|-----------|
| 1/4" standard | 00675 | LW1/4 |
| 1/4" self ejecting | 00682 | LW1/4SE |
| 5/16" standard | 00538 | LW5/16 |
| 5/16" self ejecting | 00545 | LW5/16SE |
| 3/8" standard | 00507 | LW3/8 |
| 3/8" self ejecting | 00385 | LW3/8SE |
| 7/16" standard | 00583 | LW7/16 |
| 7/16" self ejecting | 00590 | LW7/16SE |
| 1/2" standard | 00644 | LW1/2 |
| 1/2" self ejecting | 00460 | LW1/2SE |
| 9/16" standard | 00439 | LW9/16 |
| 9/16" self ejecting | 00453 | LW9/16SE |
| 5/8" standard | 00477 | LW5/8 |
| 5/8" self ejecting | 00576 | LW5/8SE |
| 11/16" standard | 00699 | LW11/16 |
| 11/16" self ejecting | 00606 | LW11/16SE |



Machinist Tap Wrench With Guide

| Tap Wrench | Reichel UPC | Model |
|------------|-------------|-------|
| 0 to 1/4 | 00279 | 51014 |
| 1/4 to 1/2 | 00293 | 51412 |
| 1/2 to 3/4 | 00286 | 51234 |
| 3/4 to 1 | 00026 | 51341 |



- Reichel Chuck Keys
- Industrial and Hardware Styles
- Standard and Self Ejecting Available
- Universal Key Holder

| Key No.'s | Reichel UPC | For LFA Chuck No.'s | For Jacobs Chuck No.'s | Pilot Size |
|--------------------------------------|-------------|--|---|------------|
| 0 / KO | 00309 | | 0, 0B | 1/8 |
| 0SE | 00071 | | | |
| #1 / K1 | 00316 | 81-1A, 81-1B | DC1G61, DC1G61AD, DC4G61 | 5/32 |
| #1SE | 00034 | 81-1A,81-1B | Self Ejecting Spring Activated Plunger | 5/32 |
| TB1/ KG | 00118 | 4200-B1, 412-B1, 420-B1 | DC1G61, DC1G61AD, DC4G61, DC4G61AD, H1G61, H4561, | 1/4 |
| TB1SE | 00972 | | MC2, MC1G41, MC1G60, MC1G61, MC1G75, U4G41, | 1/4 |
| T80/KGA | 00804 | | U4G60, U4G61 | 1/4 |
| #2 / K2 | 00323 | 82-2A, 82-2B | 2A, 2B, MC5 | 1/4 |
| #2SE | 00941 | | Self Ejecting Spring Activated Plunger | 1/4 |
| T4 / K7 | 00347 | 81-4B | 7, 7-1A, 7B | 7/32 |
| T4SE | 00194 | | Self Ejecting Spring Activated Plunger | 7/32 |
| T5 / K32 | 00378 | 82A-5A, 43b-5A, 82A-5B, 43b-5B, 82AS-5A, 43BZ-5B | 11N, 32, 32B, 33, 33B, 33BA, 33F, 33KD, 3326, 3326A, MC-10, MC33 | 1/4 |
| T5C /K32C | 00514 | | 3333C | 1/4 |
| T5SE | 00408 | | Self Ejecting Spring Activated Plunger | 1/4 |
| T6 /K3 | 00163 | 43-6A, 43-6B, 84-6A, 45-6A, 84-6B, 45-6B, 45-6A, 84-6B, 45-6B, 83S-6A, 84S-6A, 44Z-6B, 43SB-6A | 3, 3A, 3AE, 3B, 3KD, 3PD, 6AE, 6A-2A, 6A-33, 6B, 14N, 34, 34B, 34KD, 34PD, 55B, 56B, 58B, 75A, 634, 634B | 5/16 |
| T6C /K3C | 00170 | | 633C, 633D | 5/16 |
| T6SE | 00262 | | Self Ejecting Spring Activated Plunger | 5/16 |
| #13 /K30 | 00132 | 81b-13A, 81b-13B, 42-13B, 81bS-13A | 30, 30-1A, 30B, 31B, 31BA, 8 1/2 N, MC4 | 15/64 |
| #13SE | 00088 | | Self Ejecting Spring Activated Plunger | 15/64 |
| TB13 /KK | 00149 | 422-B13, 4220-B13 | DC8K33, DC8K61, DC8K64, H8K33, H8K61, H8K64, MC4K01, MC4K41, MC4K61, MC8K26, MC8K64, MC-8K64AD, U8K33A, U8K33, U8K64, U8K64A, U8K61 | 9/32 |
| TB13SE | 00354 | | Self Ejecting Spring Activated Plunger | 9/32 |
| #9 /K4 | 00392 | 85-9A, 85B-9A, 85S-9A, 85BS-9A | 16N, 18BN, 36, 36B, 37KD, 37-PD, 59B | 3/8 |
| #9SE | 00187 | | Self Ejecting Spring Activated Plunger | 3/8 |
| TBD 70-110 | 00255 | 1/4 & 3/8 | Black & Decker Chucks | 13/64 |
| #26 /K5 | 00125 | | 20N | 7/16 |
| #26SE | 00156 | | Self Ejecting Spring Activated Plunger | 7/16 |
| 2R2 | 00224 | Chuck Key Holder | Fits All Chuck Keys (EXCEPT #9 - #26) | 1/8 |
| For Makita Models-Carded Only | | | | |
| R5.5 | 763414-1 | | 6000LR, 6000R, 6510LVR, DA3000R | 7/32 |
| R6.5 | 763411-7 | | 6013BR, 6300LR, 6301LR, DA6300, DP4700 | 1/4 |

Available in Bulk & Carded
See Page 16 for Details

Note: Never apply extensions, or «cheaters» of any kind to chuck key handles. Do not subject chuck key handles to hammer or other impact blows.



- COMES WITH HEAVY DUTY MAGNETIC HOLD
- REPLACEMENT PINIONS AVAILABLE

| Part Number | Keys Included | Reichel UPC | Best Used On |
|---------------|--------------------------------|-------------|------------------|
| CD1-MK | T6/K3, T5/K32, #2/K2, #13/K30 | 02310 | Industrial Tools |
| CD2-MK | #1/K1, TB1/KG1, T4/K7, TB13/KK | 02327 | Hand Tools |

Cast Iron 4 Way Key

| Part # | UPC # | Key's Included | Key Marked |
|-------------|-------|-----------------|------------|
| CDKS | 00637 | TB13,T4,TB1,#13 | 1,2,3,4 |
| CDKL | 00620 | T9,T6,T2,T5 | 5,6,7,8 |



Tap Reamer Holder for Chuck Alignment 0-1/4 and 1/4-1/2 Taps

| Tap or Reamer Holder | REICHEL UPC | "A" Jaws | "B" Jaws |
|----------------------|-------------|----------------------------|------------------------------|
| TRH | 00211 | 0.80 to 1/4» 20-28 taps | 1/4» -20 to 1/2»- 13 taps |



Ready for Resale!

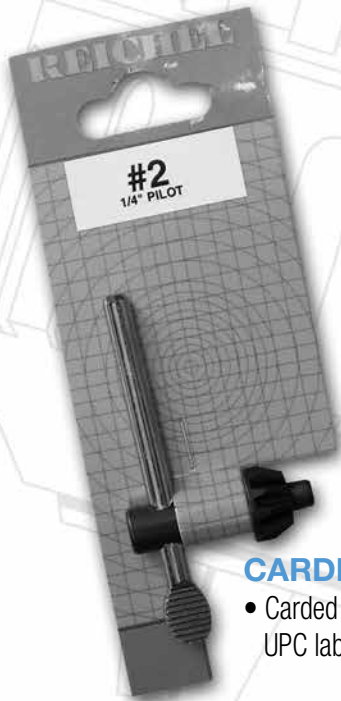
BLISTER PACKAGING:

- Hang on our Zip Strip
- Hang on your shelf



ZIP STRIP:

- Compact Space Saver for many items.
- Carded Chuck Keys
- Boxed or Blister Pack Drill Chucks
- Key Cad-De
- Hang on Zip Strip.



CARDED KEY:

- Carded key with UPC label

BOXED CHUCKS:

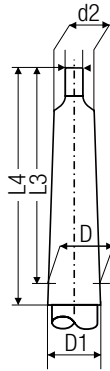
- Ready to hang from your shelf
- Easily sits on a shelf .



All items available with UPC codes.

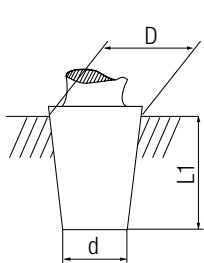
*Keys available for Carded UPC:

#0, #1, TB1, T80, #2, T4, T5, T5C, T6, T6C, #13, TB13, TBD, 2R2 Key Holder



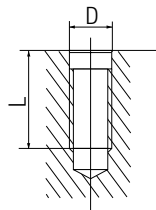
| Morse (T1) | D | D1 | d2 | L3 | L4 | b |
|------------|-------|-------|-------|-------|-------|-------|
| 0 | 0.356 | 0.362 | 0.240 | 2.224 | 2.342 | 0.153 |
| 1 | 0.475 | 0.480 | 0.354 | 2.441 | 2.579 | 0.205 |
| 2 | 0.700 | 0.709 | 0.551 | 2.953 | 3.150 | 0.248 |
| 3 | 0.938 | 0.949 | 0.752 | 3.700 | 3.898 | 0.311 |
| 4 | 1.231 | 1.244 | 0.992 | 4.626 | 4.882 | 0.469 |
| 5 | 1.748 | 1.760 | 1.437 | 5.886 | 6.142 | 0.626 |
| 6 | 2.494 | 2.512 | 2.063 | 8.268 | 8.583 | 0.748 |

Dimensions: JACOBS Tapers



| Jacobs (E2) | D | d | L1 |
|-------------|-------|-------|-------|
| 0JT | 0.250 | 0.228 | 0.437 |
| 1JT | 0.384 | 0.333 | 0.656 |
| 2shJT | 0.549 | 0.488 | 0.750 |
| 2JT | 0.559 | 0.488 | 0.875 |
| 33JT | 0.624 | 0.560 | 1.000 |
| 6JT | 0.676 | 0.624 | 1.000 |
| 3JT | 0.811 | 0.746 | 1.219 |
| 4JT | 1.124 | 1.037 | 1.656 |
| 5JT | 1.413 | 1.316 | 1.875 |

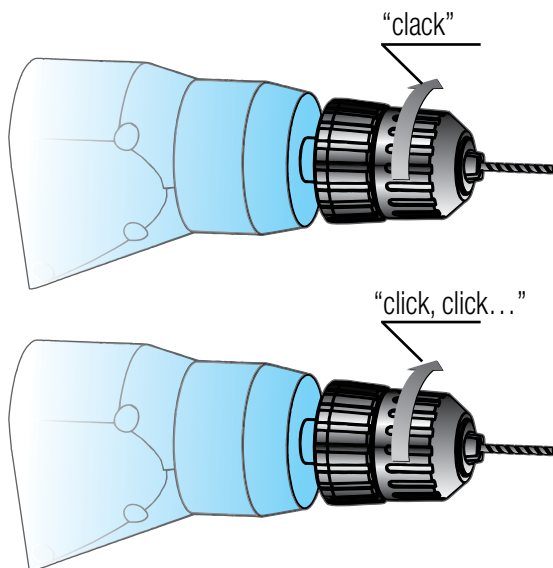
Dimensions: JACOBS Tapers



| UNF - UN (E3) | | D | Threads Per Inch | L min. |
|---------------|----|-------|------------------|--------|
| 5/16-24UNF | 3B | 0.312 | 0.042 | 0.551 |
| 3/8-24UNF | 3B | 0.375 | 0.042 | 0.571 |
| 1/2-20UNF | 3B | 0.500 | 0.050 | 0.630 |
| 5/8-16UN | 3B | 0.625 | 0.062 | 0.748 |
| 3/4-16UNF | 3B | 0.750 | 0.062 | 0.748 |

Keyless Model Removal Procedure and Accessories for Portable Drills

Instructions for using locking system



Tightening of the chuck with locking system.

- 1) Tighten the drill in the chuck until you hear a "clack", which means that the locking system has engaged **but not that the drill is fully tightened.**
- 2) After the "clack", **it is important to continue tightening the chuck** and you will hear "clicks" indicating that the locking system is operating. The drill bit will be completely tightened when you cannot hear any more "clicks".



60 and 70 Series Chucks

520 & 522 Series Chucks

5200 Series Chucks

5300 Series Chucks



| Item ID | UPC Code | Jacobs Equivalent | Chuck Mount | Weight in oz. | Sleeve Dia. | Type of Use | Most Commonly Used In | Special Features |
|--------------------------------|----------|-------------------|-------------|---------------|-------------|-------------------|-----------------------|------------------|
| 0 - 1/4 Drill Capacity | | | | | | | | |
| 610 Mini | 61001 | | 3/8-24 | 9 | 1.25 | All Steel | Industrial | |
| 0 - 5/16 Drill Capacity | | | | | | | | |
| 61BA-J1 | 61018 | | 1J | 12 | 1.42 | All Steel | Industrial | |
| 71BSA-J2 | 71228 | 80-J2s | 2J | 13 | 1.42 | All Steel | Super Industrial | Precision |
| 0-3/8 Drill Capacity | | | | | | | | |
| 62A-J2 | 61028 | | 2J | 12 | 1.42 | All Steel | Industrial | |
| 72SA-J2 | 72021 | 100-J2 | 2J | 26 | 1.77 | All Steel | Super Industrial | Precision |
| 520-1/2-20 | 52016 | | 1/2-20 | 9 | 1.58 | All Steel | Hand Tools | |
| 520-3/8-24 | 52030 | | 3/8-24 | 9 | 1.58 | All Steel | Hand Tools | |
| 520-J2 | 52023 | | 2J | 9 | 1.58 | All Steel | Industrial | |
| 5200-1/2-20 | 52009 | | 1/2-20 | 6 | 1.65 | Plastic and Steel | Hand Tools | |
| WC3R3 | 00330 | | 3/8 Square | 10 | 1 7/16 | Impact Action | Hand Tools | Square Drive |
| 5200-3/8-24 | 52043 | | 3/8-24 | 6 | 1.65 | Plastic and Steel | Hand Tools | |
| 0-1/2 Drill Capacity | | | | | | | | |
| 322 | 52279 | | 1/2-20 | 1.58 | | | Industrial | Cost Efficient |
| 322 | 84543 | | 3/8-24 | 1.58 | | | Industrial | Cost Efficient |
| 322 | 84567 | | J2 | 1.58 | | | Industrial | Cost Efficient |
| 63A-J33 | 63339 | | 33J | 18 | 1.57 | All Steel | Industrial | |
| 63A-J6 | 63067 | | 6J | 19 | 1.57 | All Steel | Industrial | |
| 73SA-J33 | 73332 | 130-J33 | 33J | 38 | 2.03 | All Steel | Super Industrial | Precision |
| 73SA-J6 | 73066 | 130-J6 | 6J | 38 | 2.03 | All Steel | Super Industrial | Precision |

Chucks Listed By Capacity

Keyless Chuck Quick Guide



60 and 70 Series Chucks



520 & 522 Series Chucks



5200 Series Chucks



5300 Series Chucks



| Item ID | UPC Code | Jacobs Equivalent | Chuck Mount | Weight in oz. | Sleeve Dia. | Type of Use | Most Commonly Used In | Special Features |
|---------------------------------|----------|-------------------|-------------|---------------|-------------|-------------------|-----------------------|----------------------|
| 1/16- 1/2 Drill Capacity | | | | | | | | |
| 522-1/2-20 | 52214 | | 1/2-20 | 14 | 1.67 | All Steel | Hand Tools | |
| 522-3/8-24 | 52238 | | 3/8-24 | 14 | 1.67 | All Steel | Hand Tools | |
| 522-J2 | 52290 | | 2J | 13 | 1.67 | All Steel | Industrial | |
| 522-J33 | 52283 | | 33J | 14 | 1.67 | All Steel | Industrial | |
| 5220Z-1/2-20 | 05216 | | 1/2-20 | 9.3 | 1.67 | Cost Efficient | Hand Tools | |
| 5220Z-3/8-20 | 05223 | | 3/8-24 | 9.3 | 1.67 | Cost Efficient | Hand Tools | |
| 5220L-1/2-20 | 52252 | | 1/2-20 | 10 | 1.67 | Plastic and Steel | Hand Tools | Locking |
| 5220L-3/8-24 | 52269 | | 3/8-24 | 10 | 1.67 | Plastic and Steel | Hand Tools | Locking |
| 5322A 1/2-20 | 53211 | | 1/2-20 | 11 | 1.67 | All Steel | Hand Tools | Locking |
| 5322A 3/8-24 | 53235 | | 3/8-24 | 11 | 1.67 | All Steel | Hand Tools | Locking |
| 5322AC 1/2-20 | 53310 | | 1/2-20 | 11 | 1.67 | All Steel | Hand Tools | Locking Carbide Jaws |
| 5322AC 3/8-24 | 53334 | | 3/8-24 | 11 | 1.67 | All Steel | Hand Tools | Locking Carbide Jaws |
| WC5R5 | 00521 | | 1/2 Square | 20 | 1.937 | Impact Action | Hand Tools | Square Drive |
| 0-5/8 Drill Capacity | | | | | | | | |
| 64A-J33 | 64330 | | 33J | 26 | 1.81 | All Steel | Industrial | |
| 64A-J6 | 64064 | | 6J | 26 | 1.81 | All Steel | Industrial | |
| 1/8- 5/8 Drill Capacity | | | | | | | | |
| 74SA-J6 | 74063 | 160-J6 | 6J | 50 | 2.27 | All Steel | Super Industrial | Precision |

Chucks Listed By Capacity



Light Duty Chuck



Medium Duty Chuck



Heavy Duty and Percussion Chuck



Super Heavy Duty Chuck

| Item ID | UPC Code | Jacobs Equivalent | Chuck Mount | Weight in oz. | Sleeve Dia. | Type of Use | Most Commonly Used in |
|------------------------------|----------|-------------------|-------------|---------------|-------------|------------------|-----------------------|
| 0-5/32 Cap | | | | | | | |
| 80-0A | 80002 | 0A | 0J | 2 | .860 | Medium Duty | Industrial |
| 0-1/4 Drill Capacity | | | | | | | |
| 81-1A-J1 | 81115 | 1A | 1J | 4 | 1.18 | Heavy Duty | Industrial |
| 81-1B-3/8-24 | 81139 | 1B-3/8 | 3/8-24 | 4 | 1.18 | Heavy Duty | Industrial |
| 81-1B-5/16-24 | 81153 | | 5/16-24 | 4 | 1.18 | Heavy Duty | Hand Tools |
| 0-5/16 Drill Capacity | | | | | | | |
| 412-B1-J1 | 41201 | | 1J | 4 | 1.18 | Medium Duty | Industrial |
| 81B-13A-J2 | 81122 | | 2J | 8 | 1.42 | Heavy Duty | Industrial |
| 81B-13B-1/2-20 | 81146 | | 1/2-20 | 8 | 1.42 | Heavy Duty | Hand Tools |
| 81B-13B-3/8-24 | 81184 | | 3/8-24 | 8 | 1.42 | Heavy Duty | Hand Tools |
| 0-3/8 Drill Capacity | | | | | | | |
| 42-13B-1/2-20 | 42123 | 31BA 1/2 | 1/2-20 | 8 | 1.42 | Heavy Duty | Hand Tools |
| 42-13B-3/8-24 | 42383 | 31BA 3/8 | 3/8-24 | 8 | 1.42 | Heavy Duty | Hand Tools |
| 420-B1-1/2-20 | 42017 | | 1/2-20 | 8 | 1.42 | Medium Duty | Hand Tools |
| 420-B1-3/8-24 | 42031 | | 3/8-24 | 8 | 1.42 | Medium Duty | Hand Tools |
| 4200B1-1/2-20 | 42000 | | 1/2-20 | 6 | 1.30 | Light Duty | Hand Tools |
| 4200B1-3/8-24 | 42086 | 30247 | 3/8-24 | 6 | 1.30 | Light Duty | Hand Tools |
| 82-2A-J2 | 82228 | 2A | 2J | 12 | 1.67 | Heavy Duty | Industrial |
| 82-2B-3/8-24 | 82235 | 2BA-3/8 | 3/8-24 | 13 | 1.67 | Heavy Duty | Hand Tools |
| 82B-5B-1/2-20 | 82518 | 32BA-1/2 | 1/2-20 | 15 | 1.77 | Heavy Duty | Hand Tools |
| 82BS-5A-J2 | 82556 | 11N | 2J | 15 | 1.77 | Super Heavy Duty | Industrial |
| 0-1/2 Drill Capacity | | | | | | | |
| 43-6A-J2 | 43205 | 34-02 | 2J | 21 | 2.01 | Heavy Duty | Industrial |
| 43-6A-J33 | 43335 | 34-33 | 33J | 20 | 2.01 | Heavy Duty | Industrial |
| 43-6A-J6 | 43601 | 34-06 | 6J | 20 | 2.01 | Heavy Duty | Industrial |
| 43-6B-1/2-20 | 43120 | | 1/2-20 | 21 | 2.01 | Heavy Duty | Hand Tools |
| 43-6B-5/8-16 | 43588 | | 5/8-16 | 21 | 2.01 | Heavy Duty | Hand Tools |
| 43S-6A-J33 | 43977 | | 33J | 21 | 2.01 | Super Heavy Duty | Industrial |
| 83S-6A-J3 | 83638 | 14N | 3J | 33 | 2.36 | Super Heavy Duty | Industrial |

Chucks Listed By Capacity

Keyed Chucks Quick Guide



**One Year
Warranty**



**Light Duty
Chuck**



**Medium Duty
Chuck**



**Heavy Duty and
Percussion Chuck**



**Super Heavy Duty
Chuck**

| Item ID | UPC Code | Jacobs Equivalent | Chuck Mount | Weight in oz. | Sleeve Dia. | Type of Use | Most Commonly Used in |
|-----------------------------------|----------|-------------------|-------------|---------------|-------------|------------------|-----------------------|
| 1/16-1/2 Drill Capacity | | | | | | | |
| 422-B13 1/2-20 | 42215 | 31052 | 1/2-20 | 13 | 1.65 | Medium Duty | Hand Tools |
| 422-B13-3/8-24 | 42239 | | 3/8-24 | 13 | 1.65 | Medium Duty | Hand Tools |
| 422-B13-J33 | 42291 | | 33J | 13 | 1.65 | Medium Duty | Industrial |
| 4220-3/8-24 | 42204 | 30598 | 3/8-24 | 11 | 1.65 | Light Duty | Hand Tools |
| 4220-B13 3/8-24 | 42204 | 30598 | 3/8-24 | 11 | 1.65 | Light Duty | Hand Tools |
| 4220-B13-1/2-20 | 42208 | 30602 | 1/2-20 | 11 | 1.65 | Light Duty | Hand Tools |
| 43B-5A-J33 | 43331 | 33 | 33J | 15 | 1.77 | Industrial | Industrial |
| 43B-5B-1/2-20 | 43229 | 33BA-1/2 | 1/2-20 | 15 | 1.77 | Heavy Duty | Hand Tools |
| 43B-5B-3/8-24 | 43380 | 33BA-3/8 | 3/8-24 | 15 | 1.77 | Heavy Duty | Hand Tools |
| 43B-5B-5/8-16 | 43168 | 33BA-5/8 | 5/8-16 | 16 | 1.77 | Heavy Duty | Hand Tools |
| 43BZ5B-1/2-20 | 43991 | | 1/2-20 | 15 | 1.77 | Percussion | Hand Tools |
| 43BZ5B-3/8-24 | 43984 | | 3/8-24 | 15 | 1.77 | Percussion | Hand Tools |
| 0-5/8 Drill Capacity | | | | | | | |
| 84-6A-J3 | 84635 | 3A | 3J | 33 | 2.36 | Heavy Duty | Industrial |
| 84-6B-5/8-16 | 84659 | 3B-5/8 | 5/8-16 | 35 | 2.36 | Heavy Duty | Hand Tools |
| 84S-6A-J3 | 84556 | 16N | 3J | 33 | 2.36 | Super Heavy Duty | Industrial |
| 3/32 to 5/8 Drill Capacity | | | | | | | |
| 44Z-6B-1/2-20 | 44127 | | 1/2-20 | 21 | 2.01 | Percussion | Hand Tools |
| 44Z-6B-5/8-16 | 44585 | | 5/8-16 | 20 | 2.01 | Percussion | Hand Tools |
| 44ZSDS | | | SDS | 22 | 2.01 | Percussion | Hand Tools |
| 1/16-3/4 Drill Capacity | | | | | | | |
| 85-9A-J4 | 85946 | | 4J | 71 | 2.95 | Industrial | Industrial |
| 85S-9A-J4 | 85977 | 18N | 4J | 71 | 2.95 | Super Heavy Duty | Industrial |
| 3/16 to 3/4 Drill Capacity | | | | | | | |
| 45-6A-J3 | 45308 | 36 | 3J | 32 | 2.95 | Industrial | Industrial |
| 45-6B-3/4-16 | 45346 | 36B-3/4 | 3/4-16 | 33 | 2.36 | Industrial | Industrial |
| 45-6B-5/8-16 | 45582 | 36B-5/8 | 5/8-16 | 33 | 2.36 | Industrial | Industrial |
| 3/16 1-1/32 Drill Capacity | | | | | | | |
| 85B-9A-J4 | 85953 | | 4J | 69 | 2.95 | Industrial | Industrial |
| 85BS-9A-J4 | 85960 | 20N | 4J | 69 | 2.95 | Super Heavy Duty | Industrial |

Chucks Listed By Capacity



**LFA® CHUCKS, CHUCK KEYS AND ARBORS ARE GUARANTEED
AGAINST DEFECT IN MATERIAL AND WORKMANSHIP.
FOR ONE YEAR FROM PURCHASE DATE.**



VISA AND MASTERCARD NOW EXCEPTED.



**LFA® Industries, Inc.
USA**

**1820 Wallace Avenue
Unit 122
Saint Charles IL 60174**

Toll Free: 866-539-2903
Fax: 630-762-7393
Email: sales@lfausa.com

www.LFAusa.com

WORLD WIDE FAME

FOR QUALITY AND EXCELLENCE

