

## Our Judge Sally Clark

Sally's most recent work interprets nature by using a variety of mediums. "My first love is watercolor, but for this present show, I tried to stretch my imagination. Instead of applying one medium, I used several together to interpret the composition. Also, including in this exhibit are several pieces of painted recycled furniture."

Sally Clark has a BA from Rhodes College in Memphis, TN, an art education degree from the University of Memphis, and a Certificate of Studies from the Institute of American Studies in Aix en Provence, France. She is a member of Working Artists Forum in Easton, Kent Island Federation of Art and the Queen Anne's County Arts Council, as well as partner in The Artists Gallery in Chestertown.



## Show Calendar

### Wednesday, April 25

All entries must be postmarked.

### Monday, April 30

Deliver works 1 - 6pm

### Wednesday, May 2

Show opens 10 - 4pm

### Saturday, May 5

Reception 3 - 5pm

### Saturday, May 26

Show Closes 10 - 1pm

### Tuesday, May 29

Pick up 10 - 6pm

KENT ISLAND FEDERATION OF ARTS, INC.  
405 MAIN STREET  
STEVENSVILLE MD 21666



## Up & Coming Gallery Show

MAY 30 - JUNE 30

4th Annual "Paint Stevensville" Plein Air  
Winners & Participants in the Gallery

JULY 6-AUGUST 4

22nd Annual Judged Photography Show

AUGUST 8-31

"Chesapeake Bay Life" - All Media

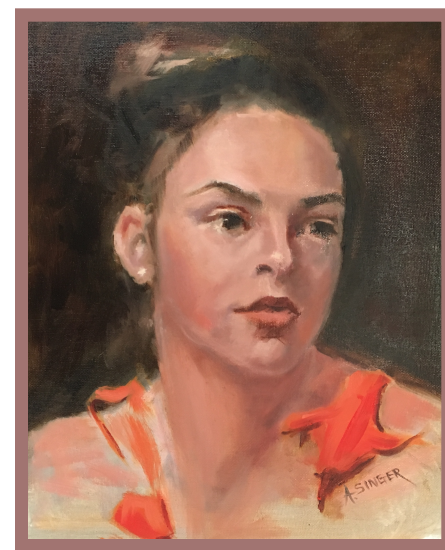
NOVEMBER 1 - DECEMBER 21

Small Works / Wearable & Decorative Arts  
& Holiday Gift Boutique

KENT ISLAND FEDERATION OF ARTS

# 55th Annual Open Judged Show

May 2-26 2018



"Best in Show 2017 "Jenna" by Ann Singer

"Interpretive Floral "Arrangements  
by Kent Island Garden Club.

## RECEPTION

Saturday, May 5 3:00-5:00pm



# 55th Annual Open Judged Show

May 2 - 26, 2017

This is a judged show presented by Kent Island Federation of Arts with categories in Oil/Acrylics, Watercolors, Pastels, Graphics and Mixed Media/ Collage and Sculpture. Categories may be combined for judging depending on amount of entries. Youth is judged separately. Artists may **enter up to three works**.

Guidelines: All work must be original, created within the last two years, not previously shown at KIFA and must not infringe upon any copyright. Reproductions are not accepted. Sculptures must include their own base or fit on a KIFA pedestal. Sculpture artists must be prepared to assist in placing their work in the gallery. Maximum size including base: 6' high x 3' wide and deep. **Other works must be dry, suitably framed, wired and ready to hang.** No sawtooth hangers. (Artwork not wired properly will not be accepted.) Maximum size framed: 40"x 40". All works on paper must be under glass with no exposed edges.

KIFA reserves the right to reject works deemed unsuitable. All entered works must remain on display through the end of the show. Reasonable care will be taken to ensure the safety of your artwork. KIFA is not liable for loss or damage to artwork.

**KIFA's commission on all sales is 30%. KIFA reserves the right to use images of the winning artwork for up to eighteen months.**



Please visit our website for additional classes and events!  
[www.kifa.us](http://www.kifa.us)

## Awards

**Best in Show**  
**Awards of Excellence**  
**Honorable Mention**  
**Best of Youth**

### ENTRY FEES

Members: \$15 for 1 piece; \$20 for up to 3 pieces  
Non-members: \$25 for up to 3 works  
Youth: \$2 per entry for up to 3 works

### Pre-Registration is Required!!

**Complete Parts 1 & 2** of the entry forms at right.  
Make check payable to KIFA.

Mail **Part 1** with check to  
**KIFA / 55th Annual Show**  
405 Main Street  
Stevensville MD 21666

Affix **Part 2** to the back of each piece.

Entry must be postmarked by **Wed., April 25**.

By entering, you agree to all the stipulations of this prospectus.

### KIFA MEMBERSHIP

\$35 Senior (65 & up)

\$40 Individual

\$50 Family

\$15 College & Youth

\$100+ Sponsorship

Membership fee may be combined with entry fee.

Please specify the type and amount of each on your check.

### Questions

Please contact the KIFA office 410.643.7424  
or [info@kifa.us](mailto:info@kifa.us)

### Entry Form Part 1 - Mail with Entry

Name \_\_\_\_\_

Address \_\_\_\_\_  
\_\_\_\_\_

Phone \_\_\_\_\_ Youth \_\_\_\_\_

Email \_\_\_\_\_

### Artworks

#### Piece 1

Name \_\_\_\_\_

Title \_\_\_\_\_

Price \_\_\_\_\_ Medium \_\_\_\_\_

#### Piece 2

Name \_\_\_\_\_

Title \_\_\_\_\_

Price \_\_\_\_\_ Medium \_\_\_\_\_

#### Piece 2

Name \_\_\_\_\_

Title \_\_\_\_\_

Price \_\_\_\_\_ Medium \_\_\_\_\_

### Entry Form Part 2 – Attach to each piece

#### Piece 1

Name \_\_\_\_\_

Title \_\_\_\_\_

Price \_\_\_\_\_ Medium \_\_\_\_\_

#### Piece 2

Name \_\_\_\_\_

Title \_\_\_\_\_

Price \_\_\_\_\_ Medium \_\_\_\_\_

#### Piece 3

Name \_\_\_\_\_

Title \_\_\_\_\_

Price \_\_\_\_\_ Medium \_\_\_\_\_

