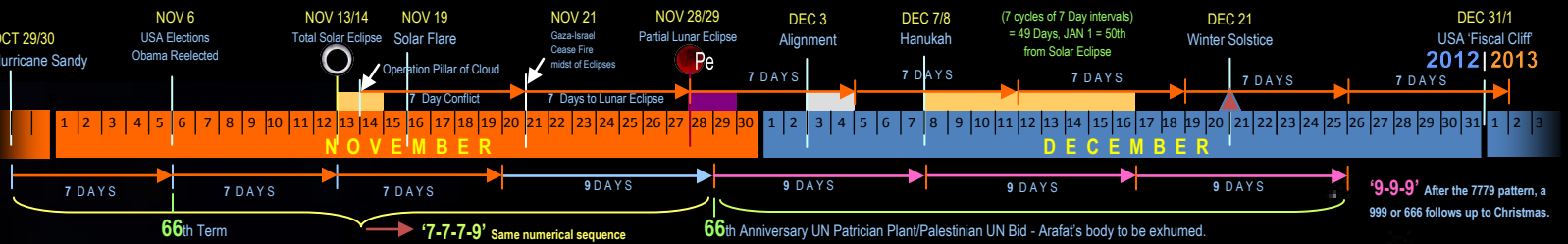


GIZA PLANETARY ALIGNMENT

MYSTERIES OF THE PYRAMID CLOCK ANNOUNCING A NEW TIME

The purpose of this illustration is to address some misconceptions about the Dec 3, 2012 Planetary Alignment of Mercury, Venus and Saturn. The error is that the planets are alleged to be in direct line with the Giza Pyramids and visible after sunset as one would look toward the west from the Pyramid complex. A picture of the Planets above the Giza Pyramid complex in Egypt has been online for a while but it is not exactly what will occur. This study will examine if such a scenario is possible altogether. Since the Pyramids are at the center piece of this planetary alignment, some investigations associated with the Pyramids will be looked at to further appreciate the complexity of such magnificent structures. It does appear that the planetary alignment of Mercury, Venus and Saturn, by themselves will have on Dec 3, 2012, the same degree of angle as the Giza Pyramid complex. Thus it will also mirror the degree of angle to that of Orion's Belt –which the Pyramids are designed after. A timeline will show various day count or number pattern associated with prior astronomical events.



A 33 OR 333 NUMERAL ASSOCIATION

November 29, 2012: past, present & future dates

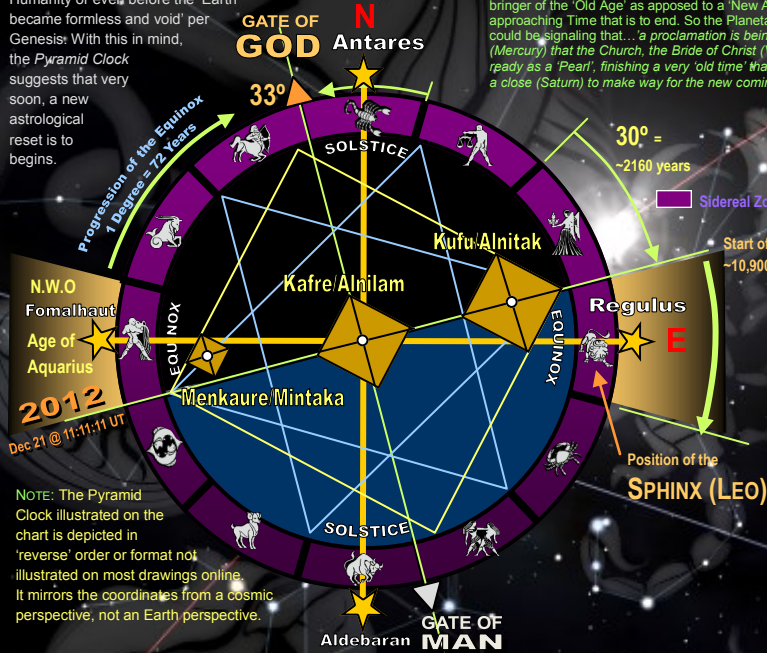
- 1) NOV 29 is the 333rd day of the year
- 2) 66th Year Anniversary of UN Patrician Plan (33+33)
- 3) 33 Days till 2013
- 4) Palestinian Bid for permanent UN Membership

On Dec 3, 2012 around 12:00 Noon or '0' time at the Giza Pyramid Plateau, there will be an approximate alignment of the Pyramid angles to the 3 Planets when one would be looking south. The Planetary Alignment rises nearly vertical from the east, a bit to the right of the sunrise. It will set near at a 45° in the west, a bit south of the sunset. Because the 3 planets are 'ahead' of the Sun, they will not be visible as they will set below the Horizon before the Sun does. Plus, at this juncture, as mentioned previously, the stars would be in reverse order in reference to the Pyramids.



THE PYRAMID TIME CLOCK

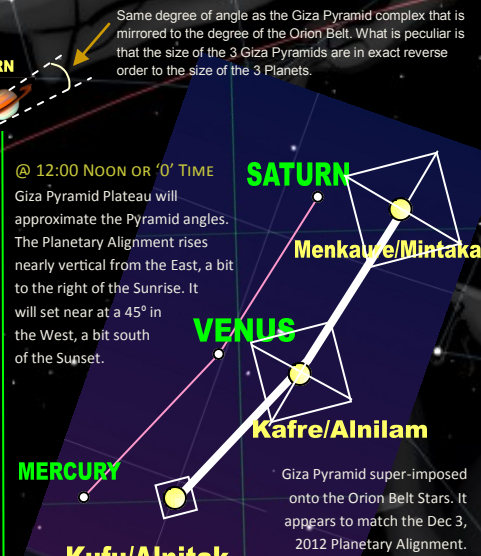
One particular phenomenon is the *Giza Clock* that is said to coincide with the Mayan end of Calendar Day of Dec 21, 2012. Although the Earth or 'World' will not end, it does seem to mark a 'changing' of a 'time'. Perhaps in reference to the coming Age or the New World Order? End of the Church Age?...The *Giza Clock* basically stipulates that the within the framework of the design of the Giza Pyramid complex, a mathematical code was factored that 'clocked' the *Procession of the Equinoxes*. The work of this discovery has been attributed to the research of Dr. Johan Oldenkamp. The Pyramids are aligned to the ancient 4 cardinal Stars. These are depicted in the Bible as 4 Living Creatures and symbols of the standards for Israel. The model presented in the accompanying chart is a fusion of 2 charts in one. The Sphinx's position is also transposed onto the *Giza Clock* as a reference to the calculated start of the *Age of LEO* in ~10,900 BC. This is not to say that this epoch could have been before the creation of Humanity or even before the 'Earth' became formless and void' per Genesis: With this in mind, the *Pyramid Clock* suggests that very soon, a new astrological reset is to begin.



PLANET	BIBLICAL	OCCULT
Mercury	Messenger 1st/88 Days Great Physician -Christ	Healer, the Caduceus -Lucifer
Venus	Bright & Morning Star, a 'Pearl' (Bride) -Christ	Son of the Dawn, 'Queen of Heaven' -Lucifer
Saturn	Lord of Rings, 'crown' Lord of Sabbath -Christ	Kronos, 'Old Age' ends, New Time -Lucifer

A possible Biblical meaning that could be deciphered from the 3 Planets' order and name association is in relation to the *Rapture* at some point in time. In particular, Saturn is a bringer of the 'Old Age' as apposed to a 'New Age' or an approaching Time that is to end. So the Planetary Alignment could be signaling that... 'a proclamation is being announced' (Mercury) that the Church, the Bride of Christ (Venus) is ready as a 'Pearl', finishing a very 'old time' that is coming to a close (Saturn) to make way for the new coming time'.

The Galactic Plain that the Earth or Sun for that matter will cross on Dec 21, 2012 is 33° from Antares, near the center of our Milky Way. Some speculate it is were the *Gate of Heaven* is located. At the Center Pyramid of Giza, of note also directly matches both in the charts and on Earth as it mirrors the heavenly 'Cross' Alignment.



Giza Pyramid super-imposed onto the Orion Belt Stars. It appears to match the Dec 3, 2012 Planetary Alignment.

IN the late afternoon about 1.5 hours before sunset in the WEST, the 3 Planets will be aligned and if seen from the Giza Plateau, would look almost like the picture in question but due to the orientation of the Planets, it would be reversed. It will be hard to see as the Sun's glare and light will not allow for them to be seen.

SIDE VIEW

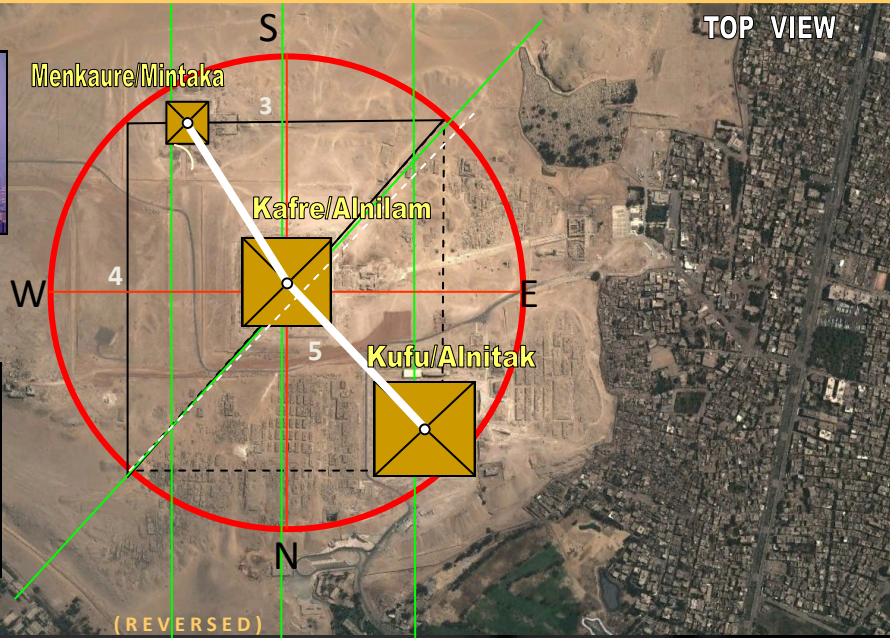
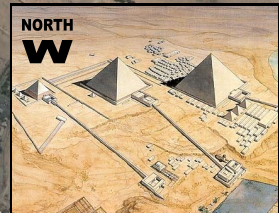
PYRAMID MATHEMATICAL MYSTERIES

The Mystery of the Great Pyramid in Egypt boggles the mind. It is full of countless mathematical precise calculations. The following figures are but some examples of how certain dates and times are edged into the very granite blocks of the structure. What is recurring, according to many researchers is the number 2012 and 2016. In some way or fashion, these 2 dates are tied together. As to its association or meaning? That remains to be seen.

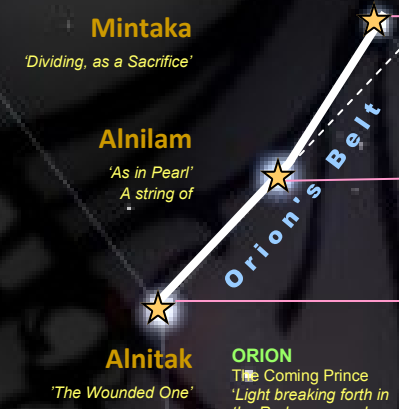
Some speculate that the 'Year of Light' 5776 which corresponds to the year 2016 is when something monumental will occur on Earth. The number is also further a factor of 2520, which is how long the *Tribulation Period* is to last –per some interpretations of Daniel's Last Week of Weeks. Is the Pyramid telling us that perhaps 2016 will be the commencing of the Prophetic Week of a 2520 days, according to the Prophet Daniel? It will remain to be seen. Following is just an example of the complexity of the mathematics that was infused into the design of the Pyramids.



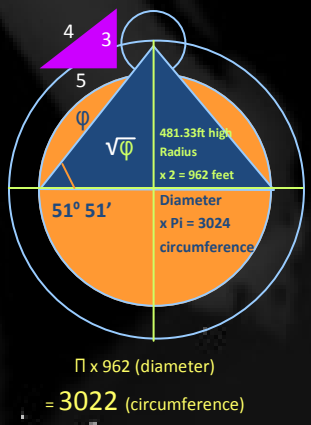
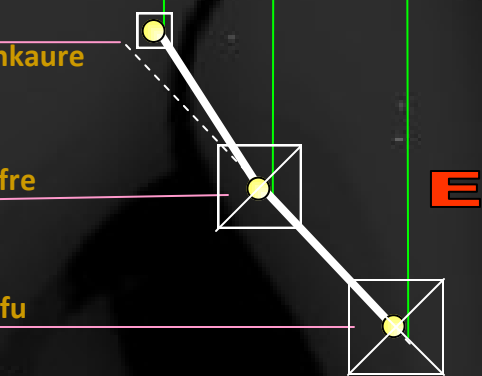
Giza Plateau looking West where the Sun sets and Orion descends at night to correspond to the Pyramids.



Constellation Orion



Giza Pyramids Transposed



CIRCUMFERENCE OF THE GREAT PYRAMID (KHUFU)

Height: 481.33 feet or 5776 inches (5776 = 2016)

Perimeter = 3024

3x3024 = 1008

1008 + 1008 = 2016

2016 + 1008 = 3024 (circumference)

3024 + 1008 = 4032 (4032/2 = 2016)

4032 + 1008 = 5040 (2520 + 2520)

