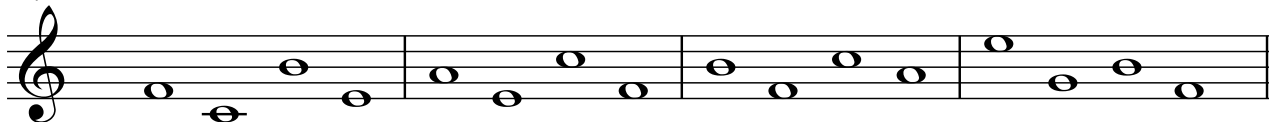


note challenge

Exercises

For each of the following, name the notes. Watch the clefs!

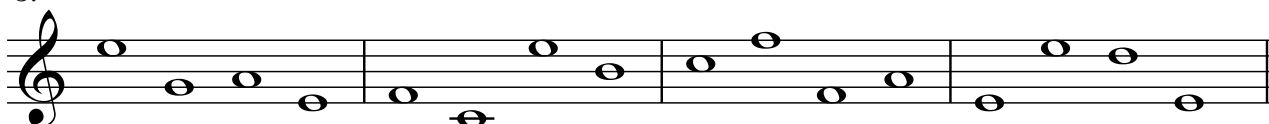
1.



2.



3.



For each given letter name, write the note on the staff.

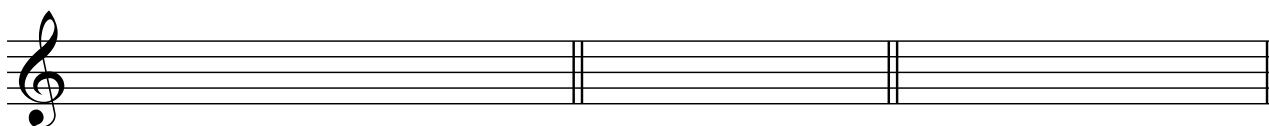
(Remember: Some notes have more than one place on the staff.

Double the notes up to one ledger line above and below the staff)

1.



B E A D C A G E G A B E E D G E



B A G G A G E D E E D F A B