

Sceptre 41



Sceptre 41

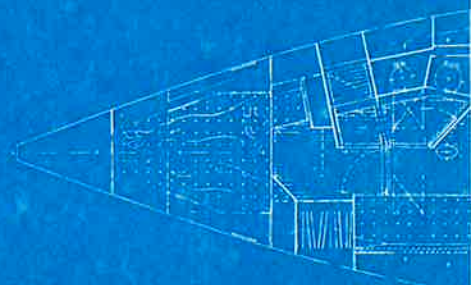
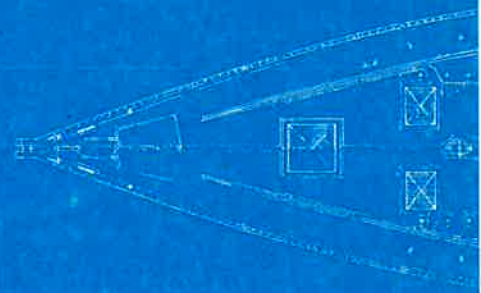
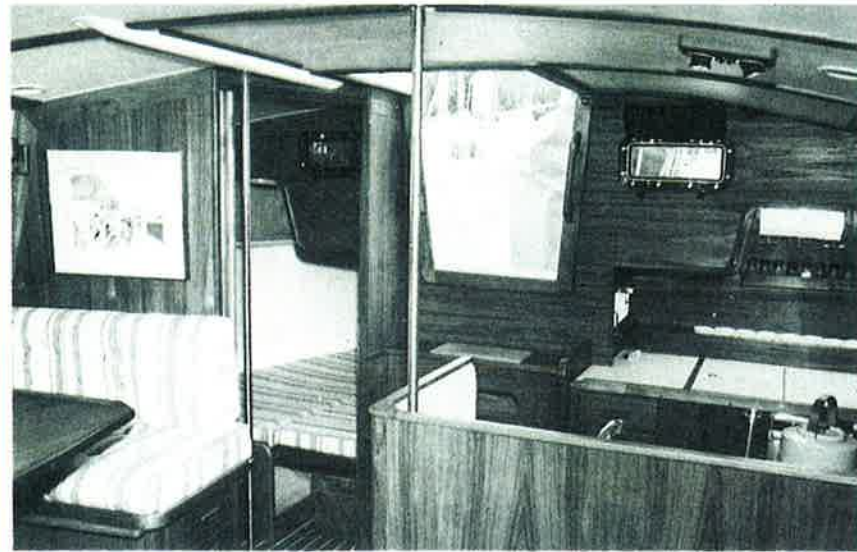
Trend-setting Motor Sailer featuring:

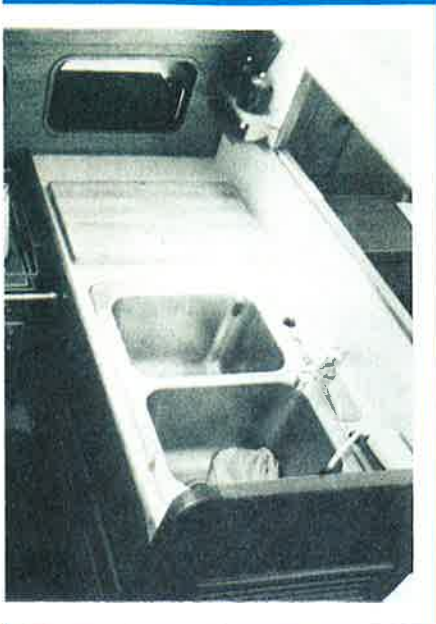
- Exceptional handling and performance under sail
- Quiet, vibration-free motoring at 7½ to 8 knots cruising speed (8.5 knots max.)
- Dual helm stations
- Excellent visibility over trunk cabin
- Simple, easy to handle sloop rig (cutter optional)
- Rigging and deck layout for safe, short-handed sailing
- Raised settee/dining area
- Spacious head compartment; separate stall shower
- Private entrance to head from owner's state room
- Private guest cabin aft
- 6'5" head room throughout
- Transom gate for convenient access to swimgrid
- Abundant stowage under cockpit seat and in lazarette
- External lead ballast and moderate draft
- Meticulously built by Canadian craftsmen

DESIGN: HEIN DRIEHUYZEN

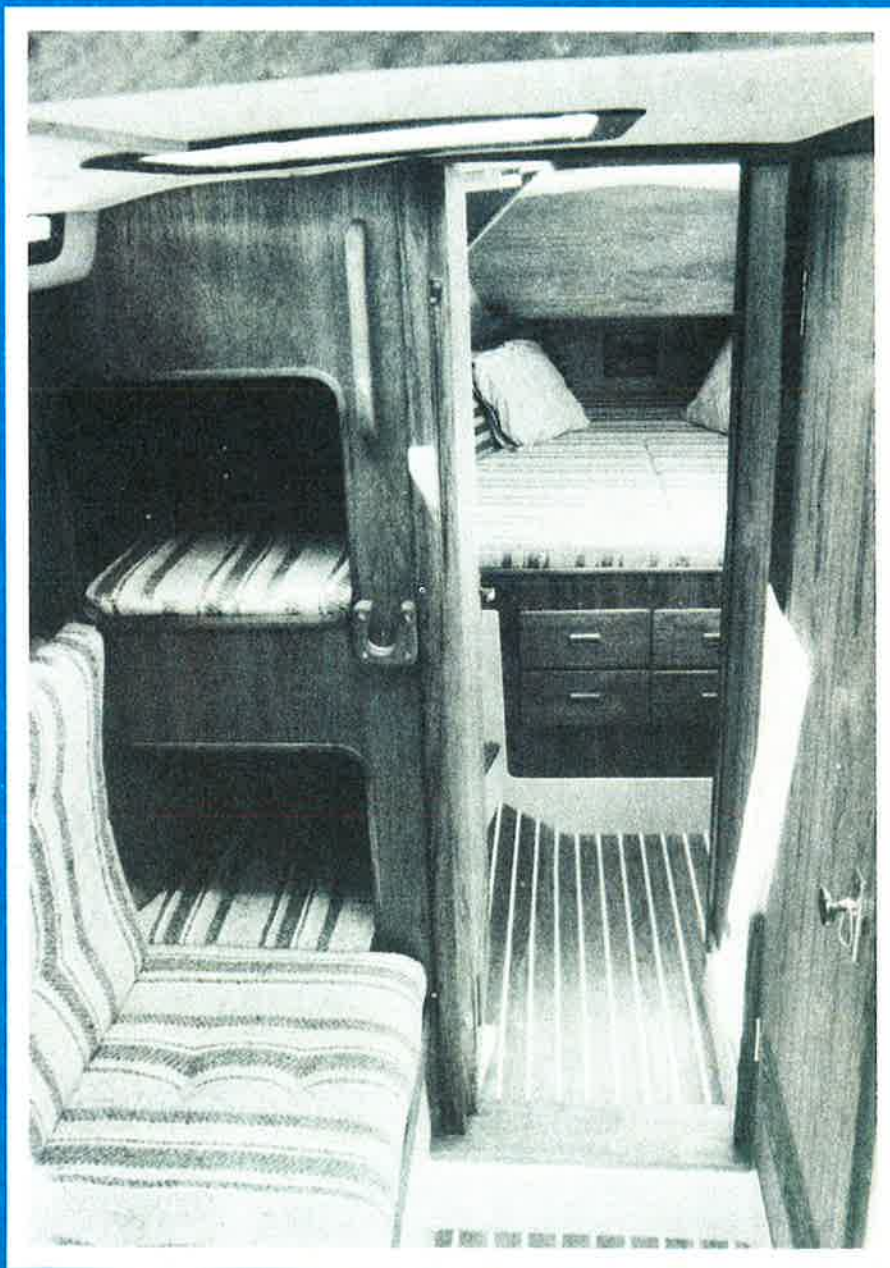
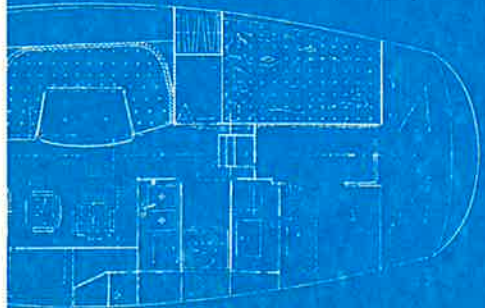
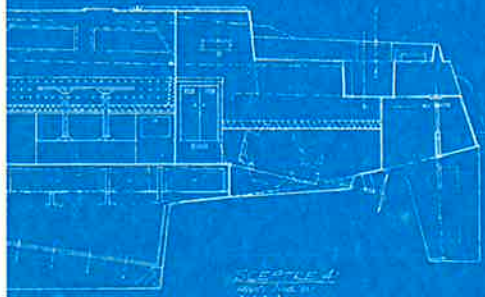
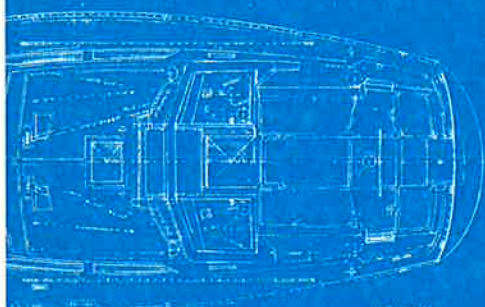


Scep





re 41



Sceptre 41



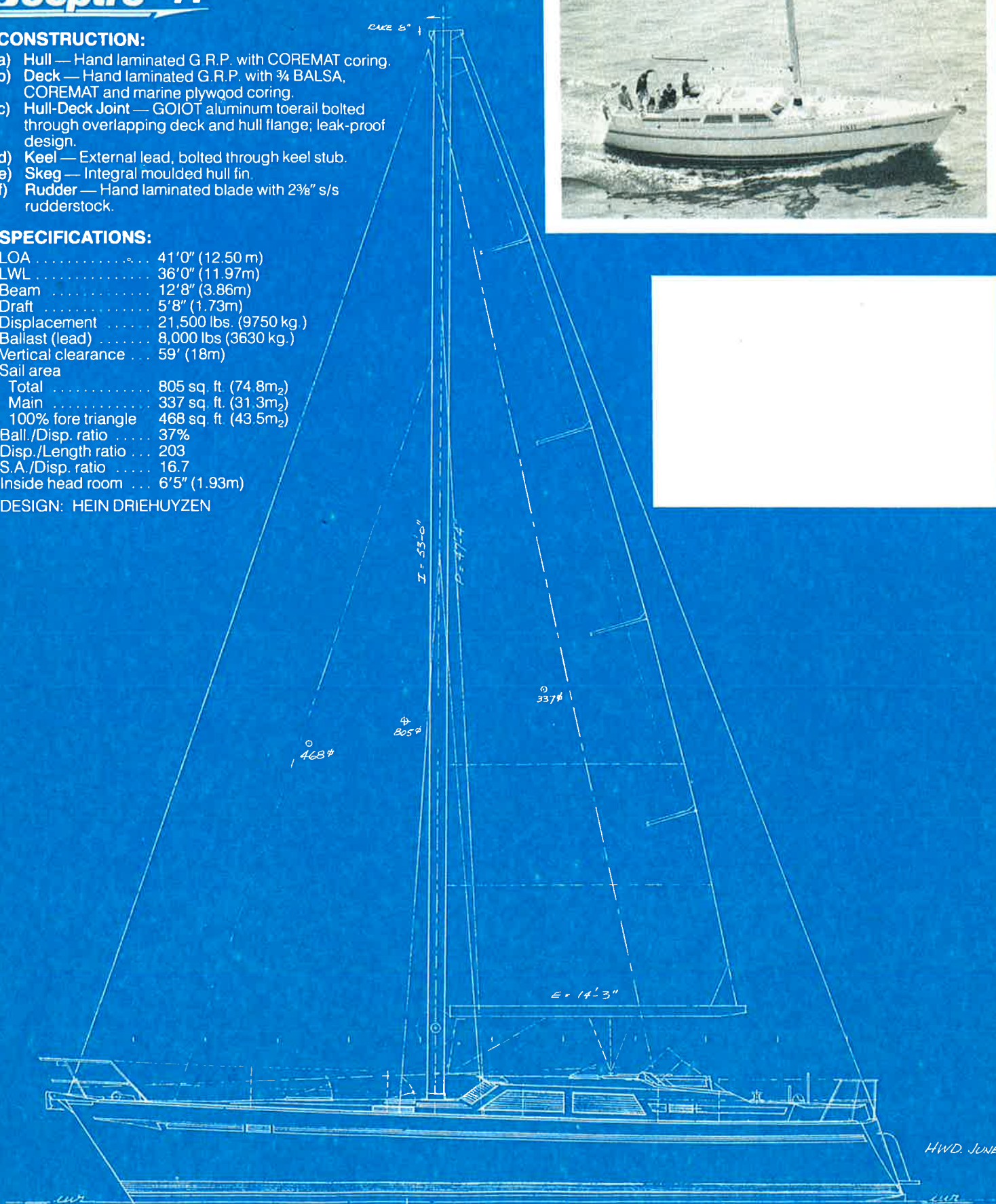
CONSTRUCTION:

- Hull — Hand laminated G.R.P. with COREMAT coring.
- Deck — Hand laminated G.R.P. with 3/4 Balsa, COREMAT and marine plywood coring.
- Hull-Deck Joint — GOIOT aluminum toerail bolted through overlapping deck and hull flange; leak-proof design.
- Keel — External lead, bolted through keel stub.
- Skeg — Integral moulded hull fin.
- Rudder — Hand laminated blade with 2 3/8" s/s rudderstock.

SPECIFICATIONS:

LOA	41'0" (12.50 m)
LWL	36'0" (11.97m)
Beam	12'8" (3.86m)
Draft	5'8" (1.73m)
Displacement	21,500 lbs. (9750 kg.)
Ballast (lead)	8,000 lbs (3630 kg.)
Vertical clearance	59' (18m)
Sail area	
Total	805 sq. ft. (74.8m ₂)
Main	337 sq. ft. (31.3m ₂)
100% fore triangle	468 sq. ft. (43.5m ₂)
Ball./Disp. ratio	37%
Disp./Length ratio	203
S.A./Disp. ratio	16.7
Inside head room	6'5" (1.93m)

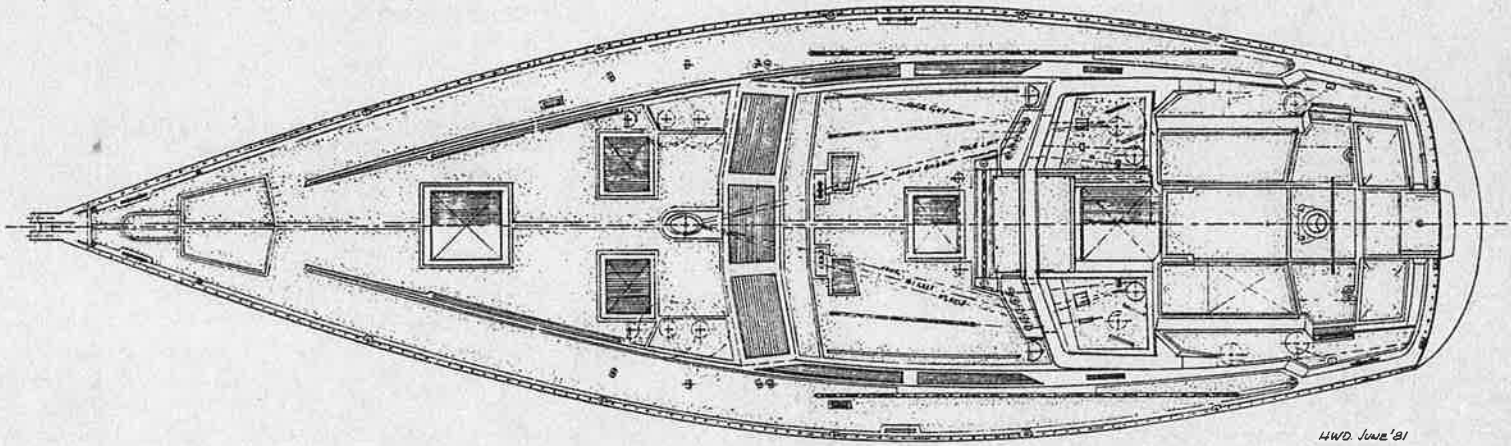
DESIGN: HEIN DRIEHUYZEN



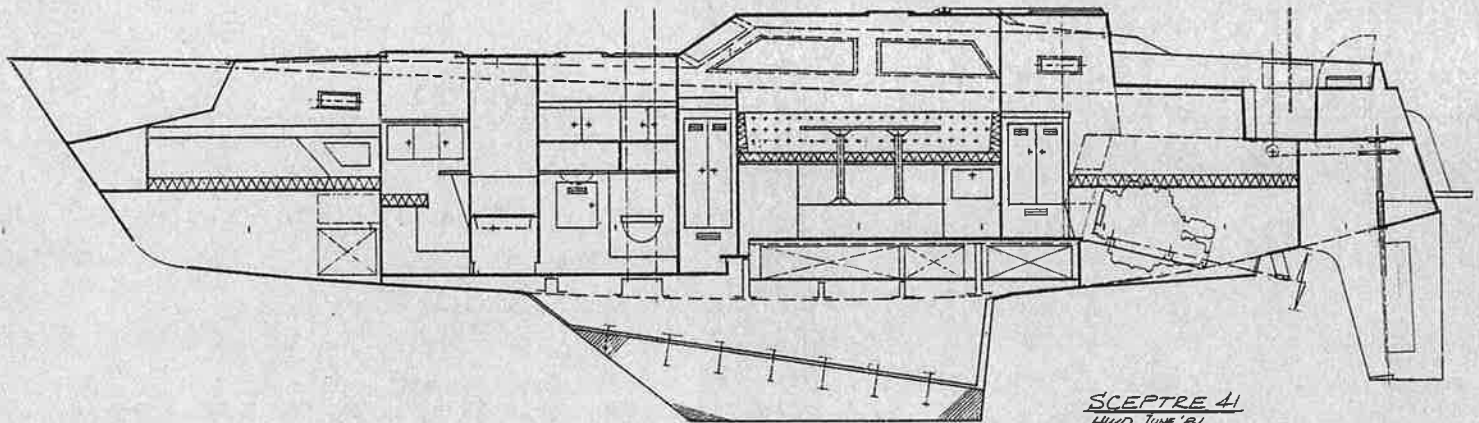
HWD. JUNE '81

Sceptre Yachts Ltd.

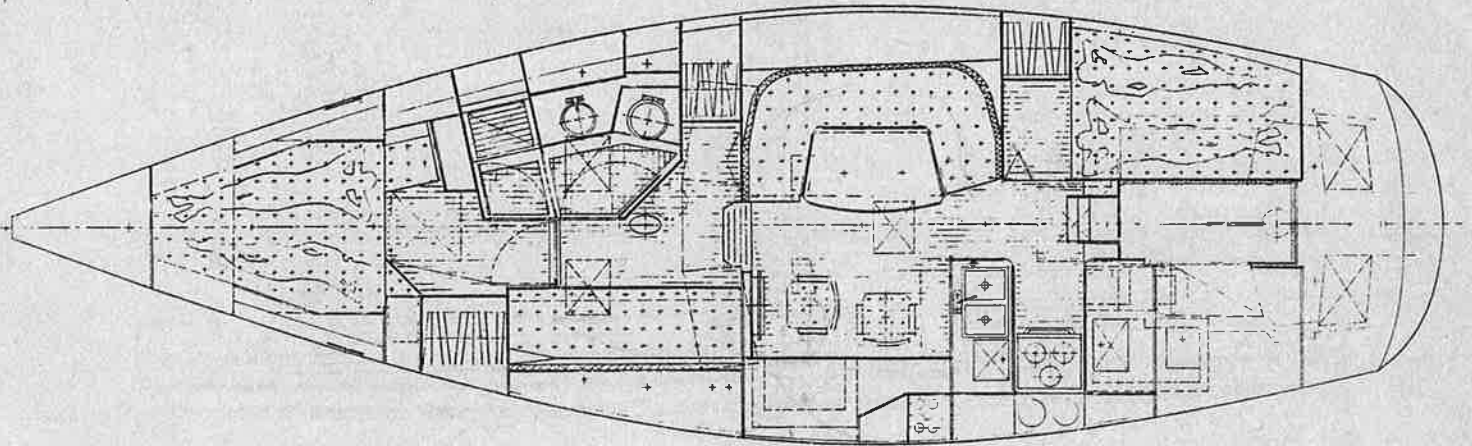
4720 Cowley Crescent, Richmond, B.C., Canada V7B 1C2 (604) 273-1308



HWD JUNE '81



SCEPTRE 41
HWD JUNE '81
SCALE 3/4" = 1'-0"



Sceptre Yachts Ltd.

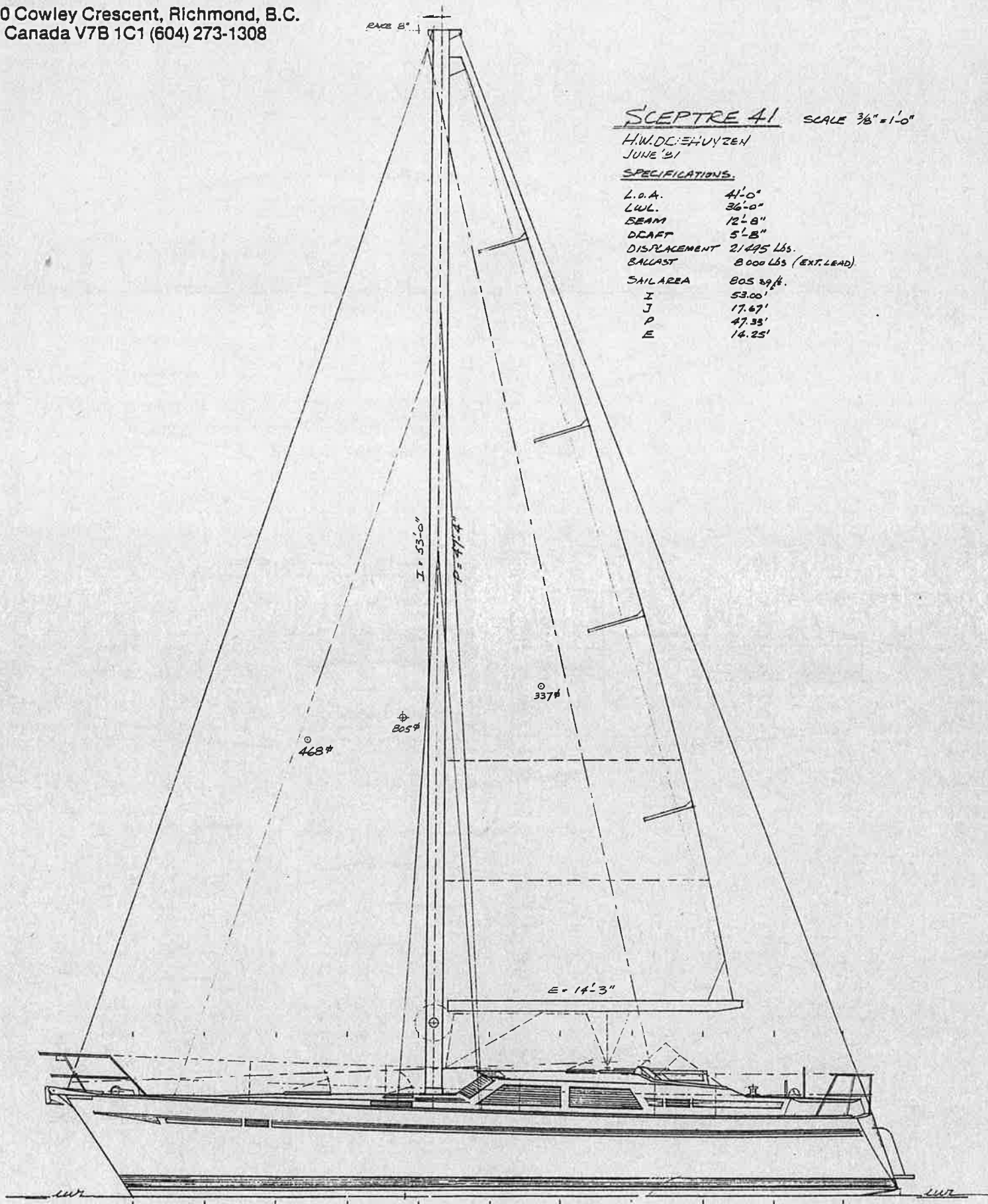
4720 Cowley Crescent, Richmond, B.C.
Canada V7B 1C1 (604) 273-1308

SCEPTRE 41 SCALE $\frac{3}{8}'' = 1'-0''$

H.W.D.C. EHVYZEN
JUNE '81

SPECIFICATIONS:

L.O.A.	41'-0"
LWL.	36'-0"
BEAM	12'-8"
DRAFT	5'-8"
DISPLACEMENT	21,295 Lbs.
BALLAST	8,000 Lbs (EXT. LEAD)
SAIL AREA	805 sq. ft.
I	53.00'
J	17.67'
P	47.33'
E	14.25'



H.W.D. JUNE '81