

SALE OF LAND BY PUBLIC TENDER

THE CORPORATION OF THE MUNICIPALITY OF NEEBING

Take Notice that tenders are invited for the purchase of the land described below and will be received until 3:00 p.m. local time on February 14, 2018, at the Neebing Municipal Office, 4766 Highway 61, Neebing Ontario. The tenders will then be opened in public on the same day and at the same place, as soon as possible after 3:00 p.m.

Description of Land:

Municipal Assessment Roll No. 58 01 030 006 21500 0000;
Land Titles Property Identification Number ("PIN") 62273-0076 (LT);
Parcel 5521 Section DFWF; N 1/2 of NE 1/4 Section 9 Concession 6 Blake; Neebing;
File No. 16-01

Minimum Tender Amount: \$8,639.86

Tenders must be submitted in the prescribed form and must be accompanied by a deposit in the form of a money order or of a bank draft or cheque certified by a bank or trust corporation payable to the municipality and representing at least 20 per cent of the tender amount.

Except as follows, the municipality makes no representation regarding the title to or any other matters relating to the land to be sold. Responsibility for ascertaining these matters rests with the potential purchasers.

This sale is governed by the Municipal Act, 2001 and the Municipal Tax Sales Rules made under that Act. The successful purchaser will be required to pay the amount tendered plus accumulated taxes, HST if applicable and the relevant land transfer tax.

The municipality has no obligation to provide vacant possession to the successful purchaser.

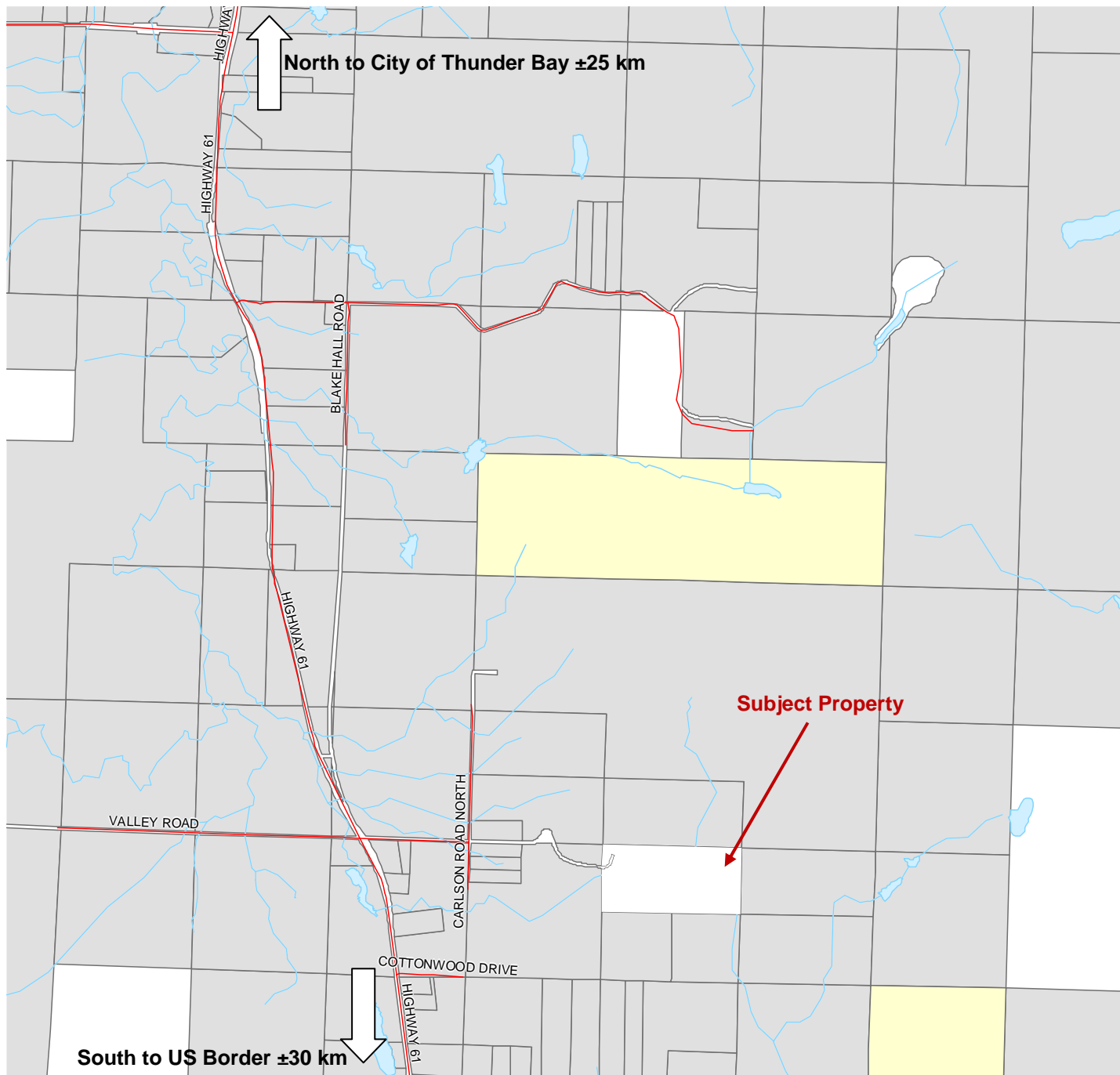
For further information regarding this sale and a copy of the prescribed form of tender, visit:

www.OntarioTaxSales.ca

or if no internet access available, contact:

Erika Kromm
Treasurer-Deputy Clerk
The Corporation of the Municipality of Neebing
4766 Highway 61
Neebing ON P7L 0B5
807-474-5331
www.neebing.org

Maps are provided as a courtesy only and the municipality makes no warranties as to the accuracy of this information.





Maps and pictures are provided as a courtesy only and the municipality makes no warranties as to the accuracy of this information. Boundaries on aerial photos may be skewed.