



Manufacturing Rep Company

A collaborative gateway to sustainable, compliant and cost efficient building envelope products and assemblies.

Walls

Roofs

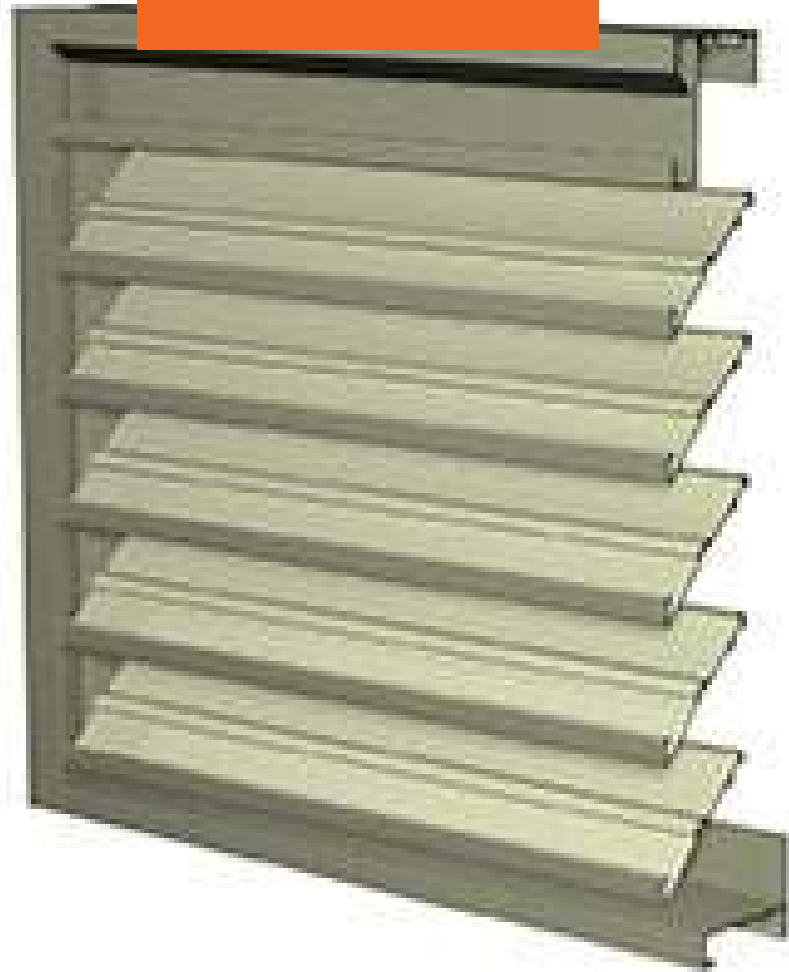
Foundations



www.schwabgroup.net



Louvers



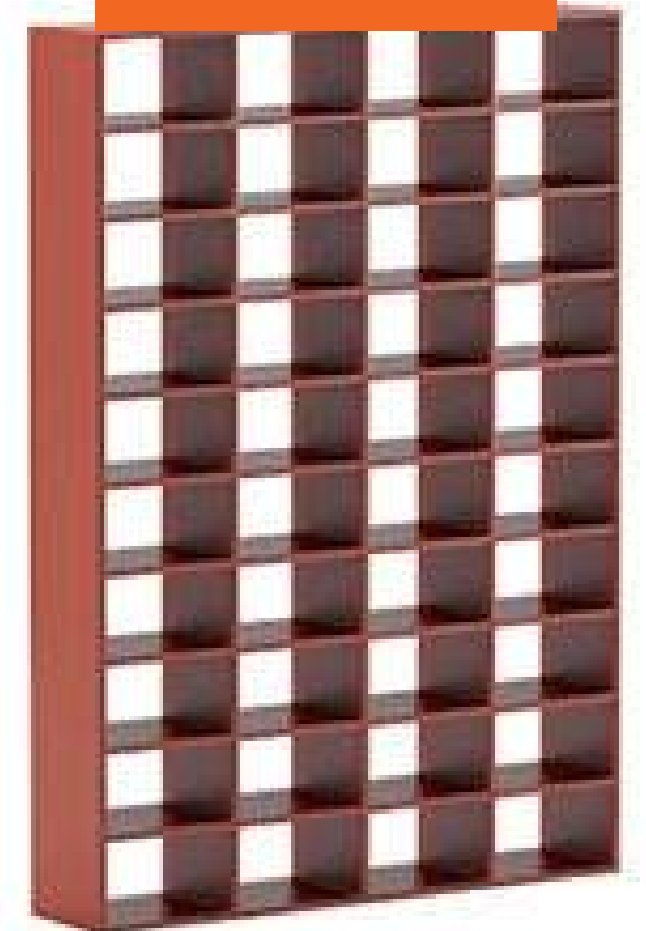
Sun
Controls



Louver
Screens

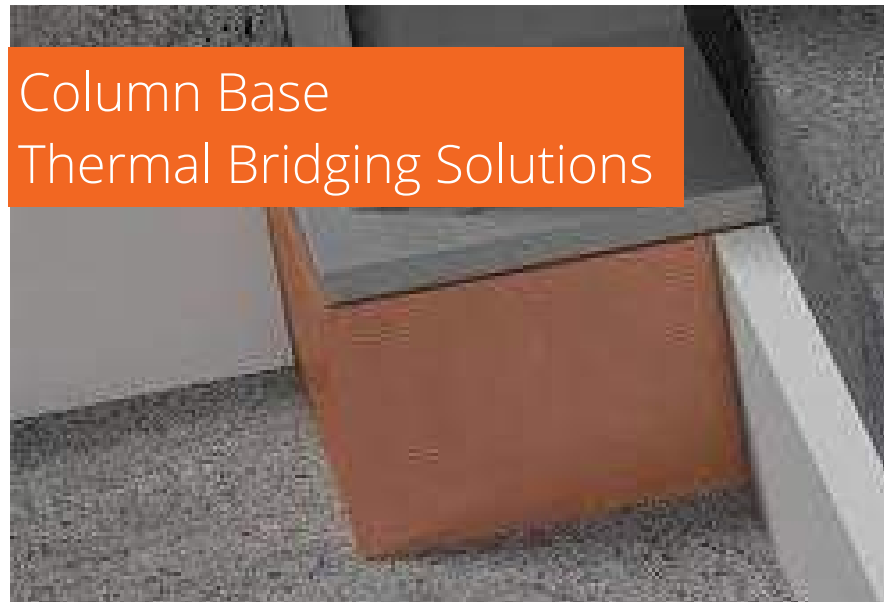


Grilles

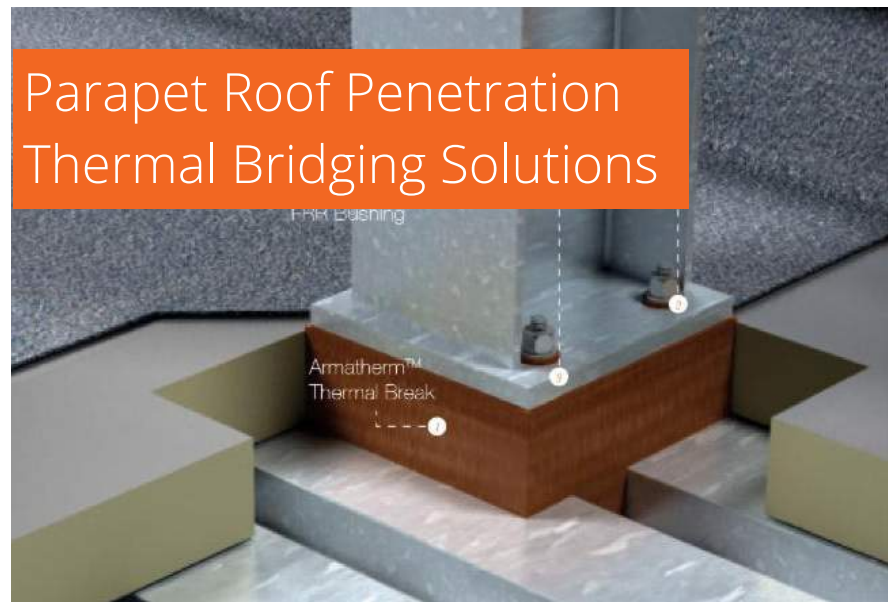




Cladding/Wall Panel
Thermal Bridging Solutions



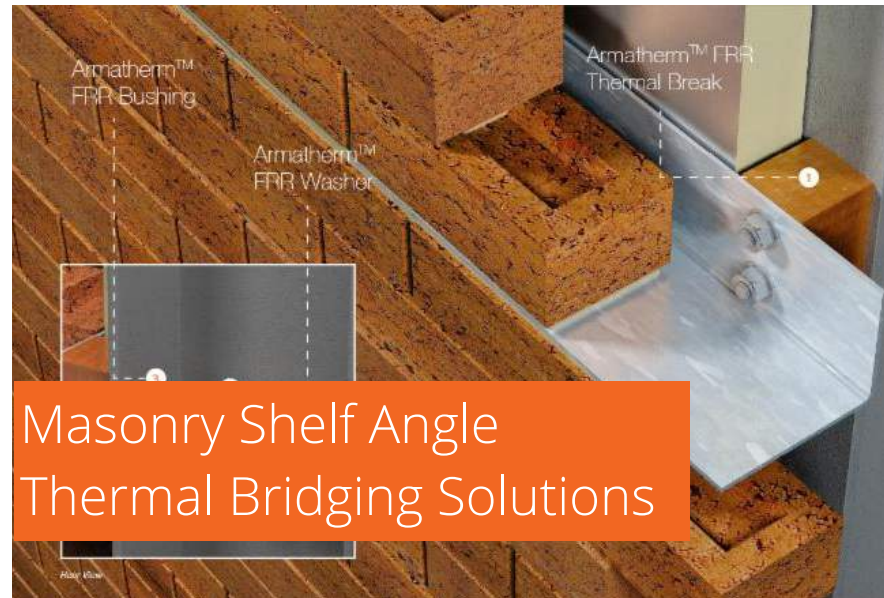
Column Base
Thermal Bridging Solutions



Parapet Roof Penetration
Thermal Bridging Solutions



Foundation Wall
Thermal Bridging Solutions



Masonry Shelf Angle
Thermal Bridging Solutions



Steel Balcony/Canopy
Thermal Bridging Solutions





High Performance Polyether Adhesives & Sealants



CLADDING CORP

THE 1ST NAME IN RAINSCREEN



TC18
Terracotta Panels



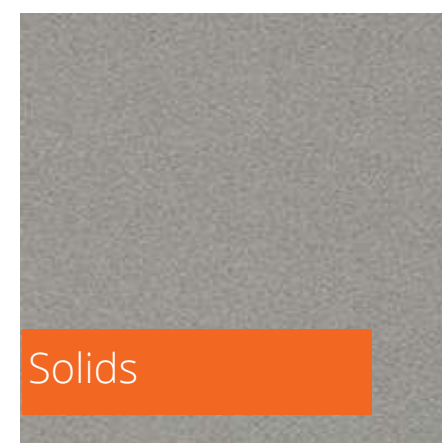
TC30
Terracotta Panels



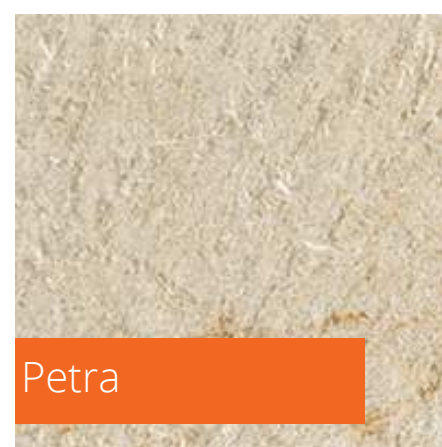
Sunscreen
Baquette & Louvers



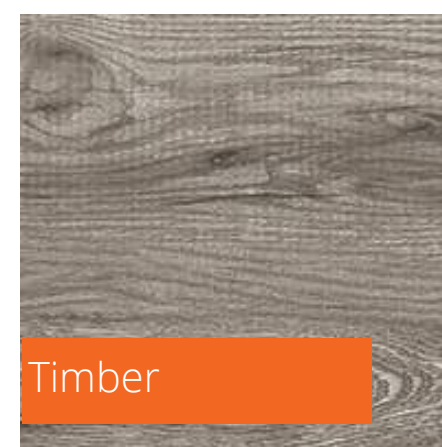
Metallics
Collection



Solids



Petra



Timber



Subframing
Systems





Roofing
Asphalt



Fiberboard



Roofing Nails



Synthetic Underlayment



Detec™

ELECTRONIC LEAK DETECTION



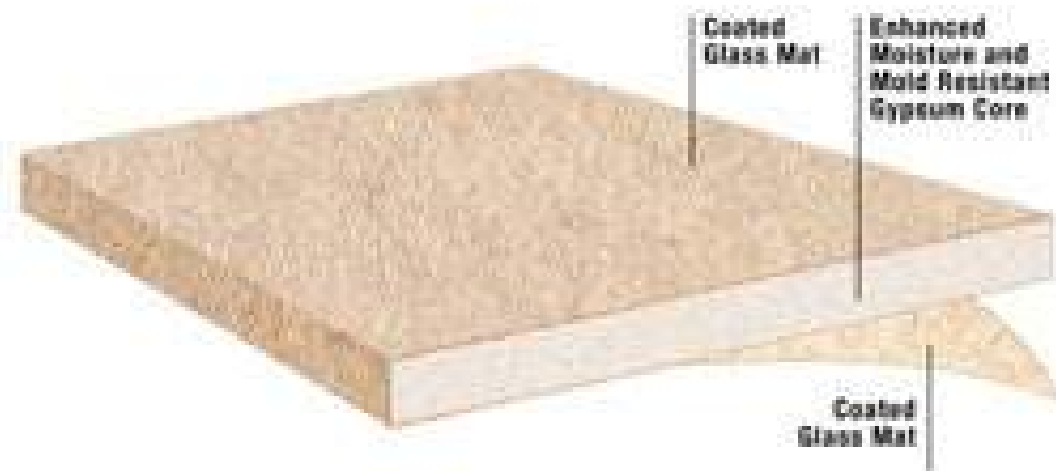
INTEGRISCAN
Waterproofing Membrane
Integrity Testing Service



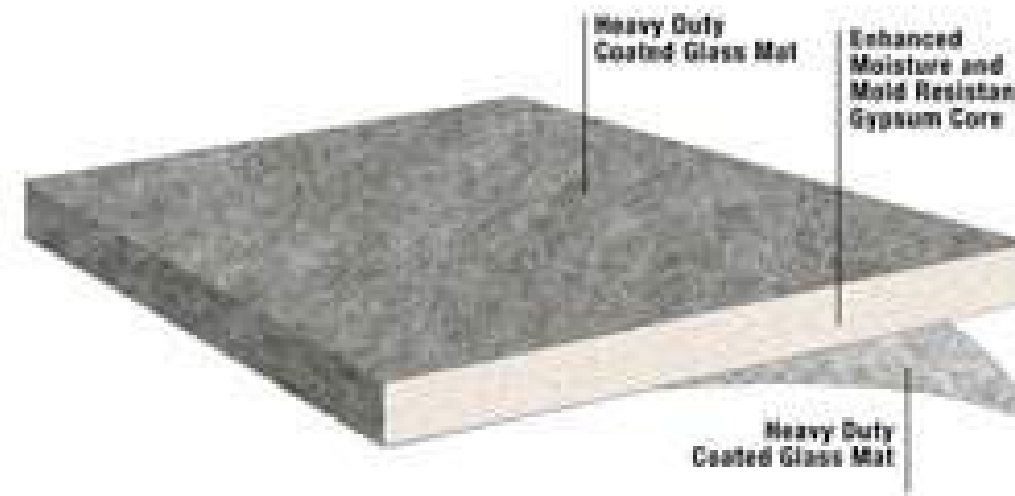
TruGround
Conductive Primer
Used w/ INTEGRISCAN



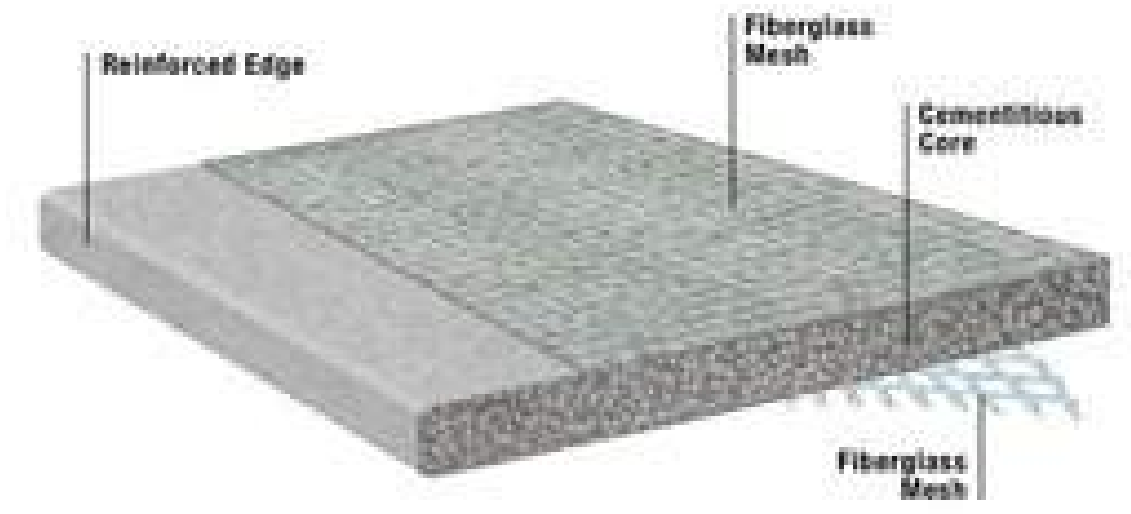
PermaScan
Fully Embedded, Fully Automated
Leak Detection & Moisture Monitoring



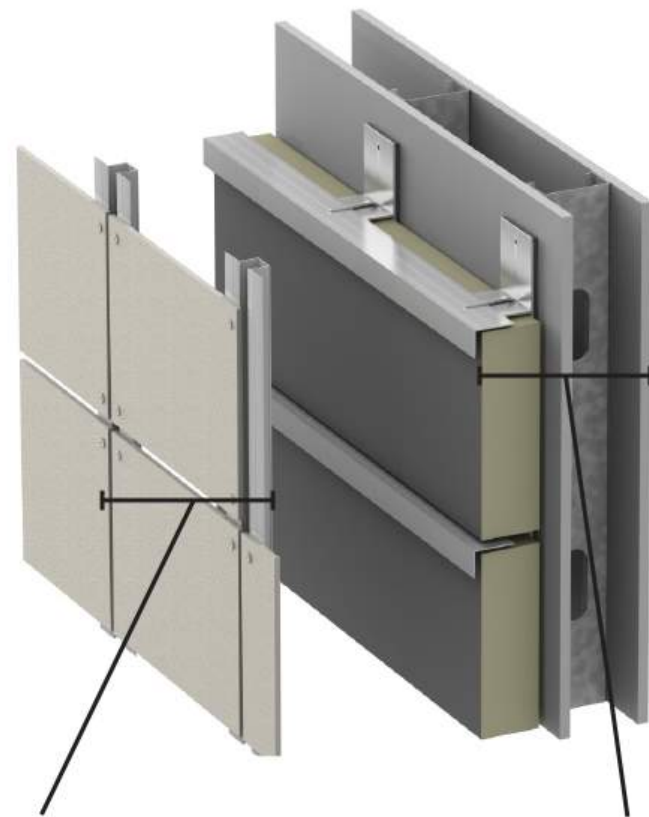
DEXcell Glass Mat
Roof Board



DEXcell FA Glass Mat
Roof Board



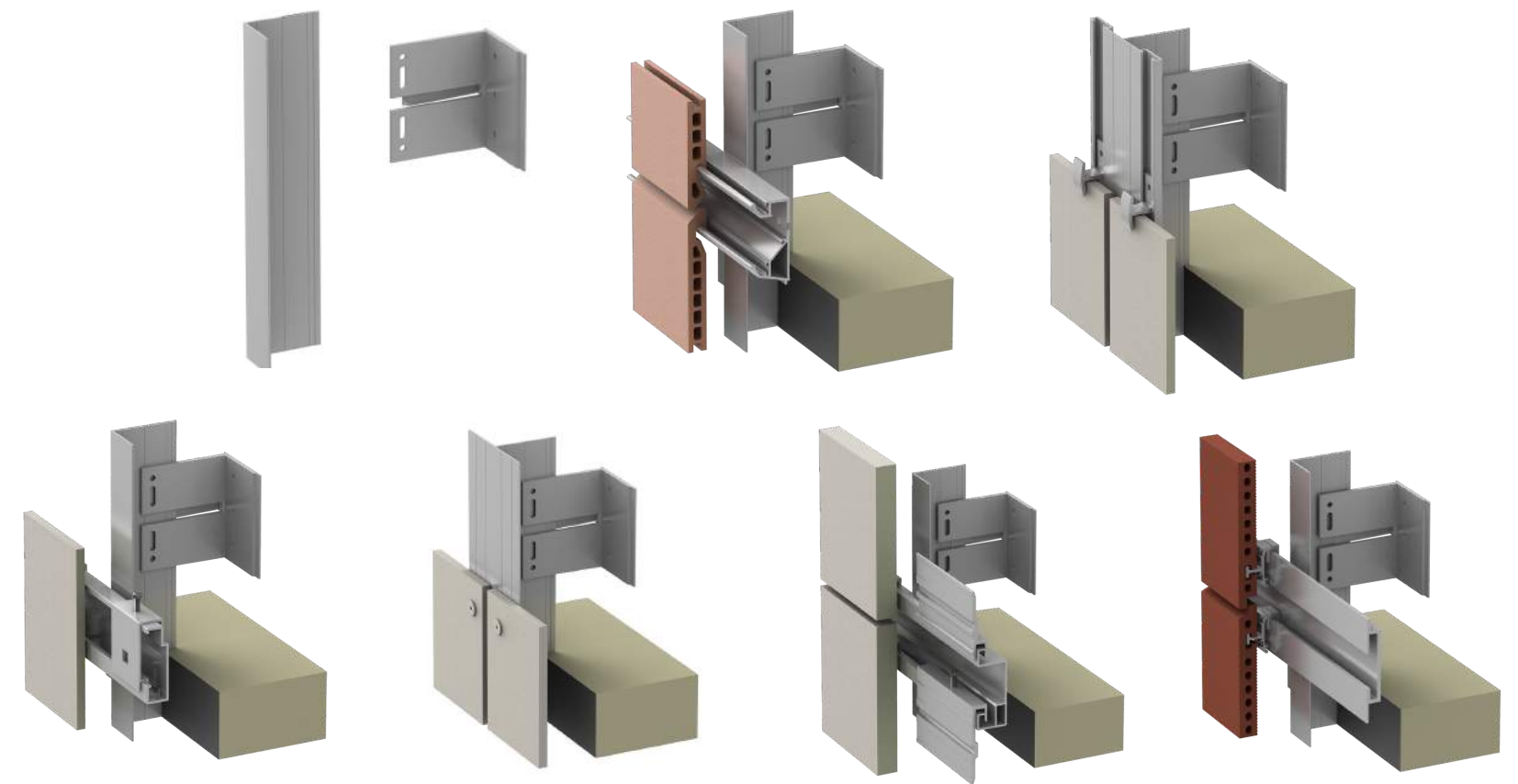
DEXcell Cement
Roof Board

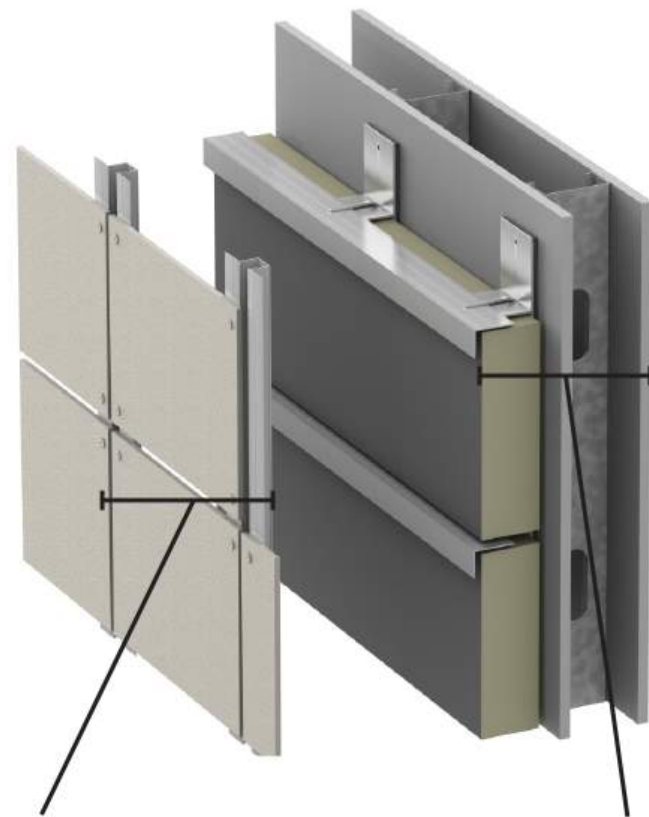


PANEL SUB-FRAMING **C.I. SUB-FRAMING**

ECO Cladding offers a complete aluminum sub-frame platform of adjustable bracket and rail systems to accommodate a wide variety of rainscreen panels.

Vertical Systems



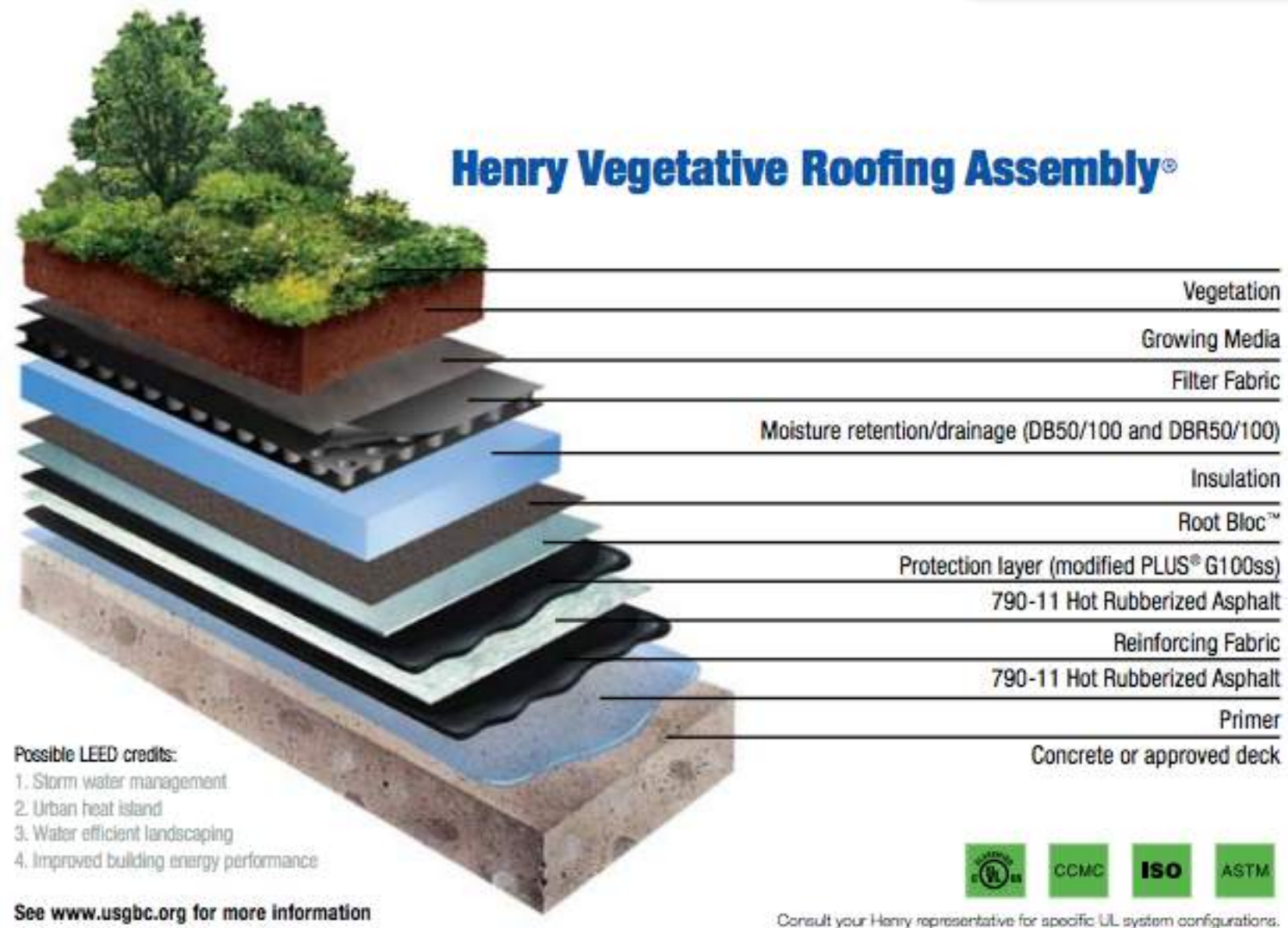


PANEL SUB-FRAMING **C.I. SUB-FRAMING**

ECO Cladding offers a complete aluminum sub-frame platform of adjustable bracket and rail systems to accommodate a wide variety of rainscreen panels.

Horizontal Systems

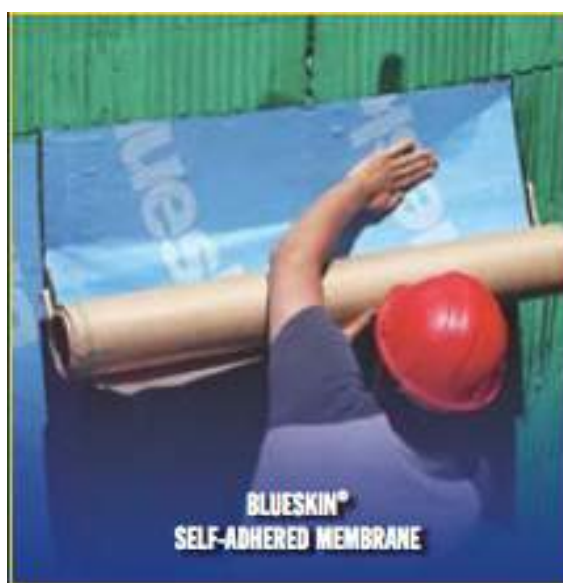
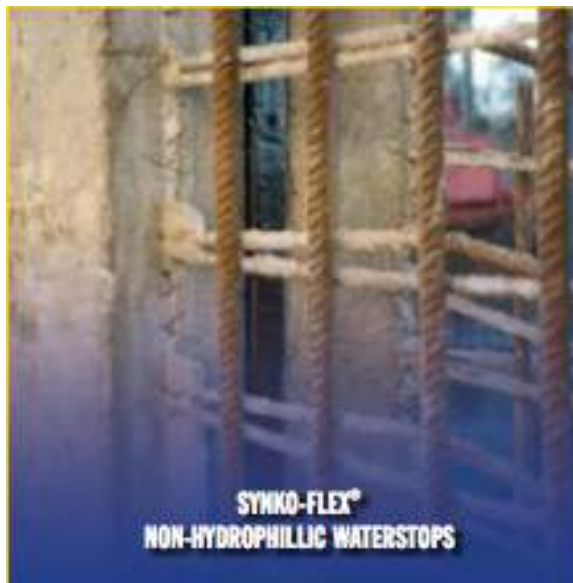
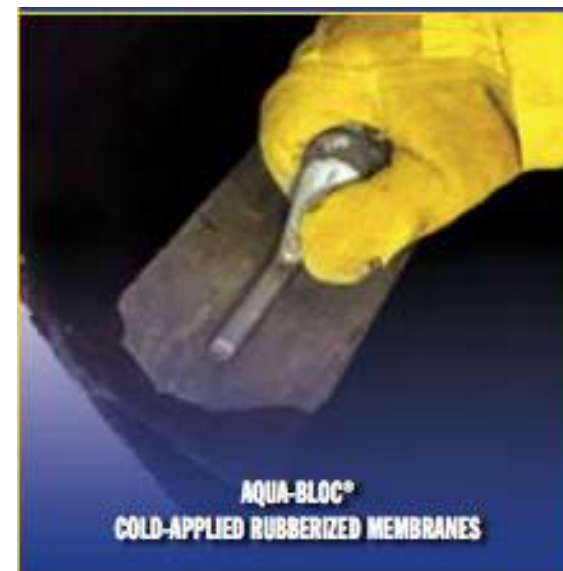




A Henry Vegetative Roofing Assembly™ (VRA) is built upon its proven 790-11 hot-rubberized waterproofing membrane. A Henry VRA comes with a Single-Source Warranty covering the complete job, from its waterproofing membrane to the vegetation. So you can have the confidence that your roof is protected by a stable and financially secure company that will be there down the road.



Henry®



Waterproofing

Effective protection begins and ends with Henry, your single source for waterproofing. Henry waterproofing systems combine the right materials that act together to prevent water infiltration through the Building Envelope.



Air-Bloc® fluid applied air barriers: seamless protection to keep walls dry

With a range of vapor impermeable and vapor permeable options, Air-Bloc® fluid applied air barriers accommodate every climate and substrate for greater flexibility depending on your project needs.

- Low VOC formulations allow compliance with environmental regulations
- Available as single component, with UV stability for permanent exposure
- Apply with standard industry spray equipment, roller or trowel over a wide temperature range
- Available with antimicrobial agents to defend against mold and mildew
- Compliant in various NFPA 285 assemblies



Blueskin® self-adhered sheet air barriers: a consistent plane of protection

Introduced by Henry® over 30 years ago – and providing trusted performance ever since – self-adhered Henry® Blueskin® air barriers create a continuous membrane upon installation.

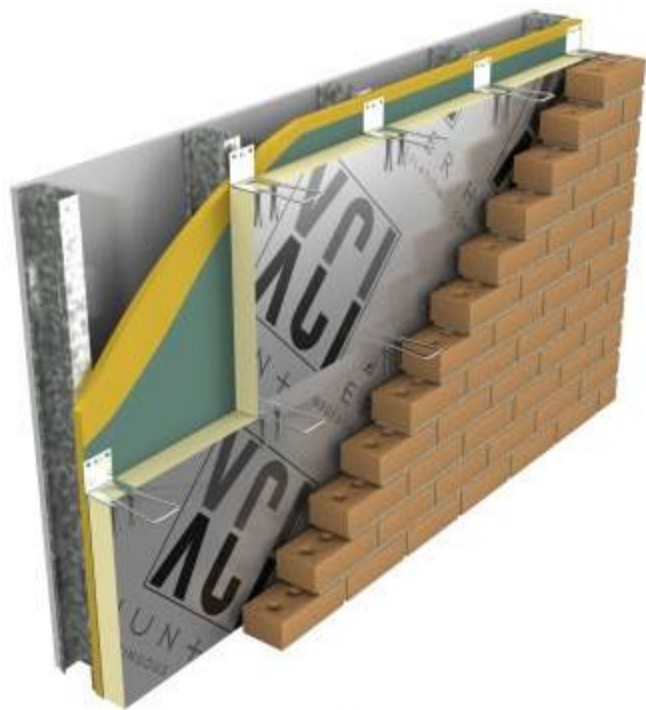
- Vapor impermeable and vapor permeable options available
- Precise manufacturing controls the thickness to help ensure uniform performance
- Available in a variety of roll widths – makes for easy handling on site
- Compliant in various NFPA 285 assemblies
- Installation is quick and easy



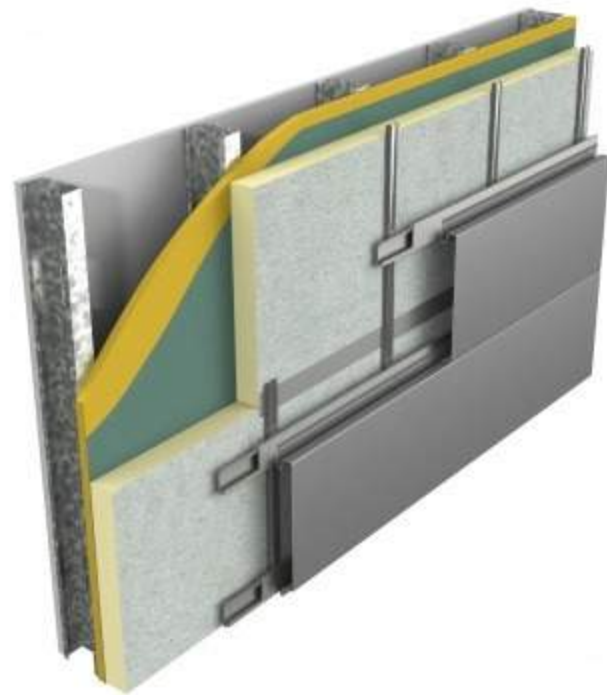


HUN + ER
CONTINUOUS INSULATION

Hunter Panels Xci polyiso products meet the continuous insulation standards prescribed in ASHRAE 90.1-2010 and IECC 2012 for commercial exterior wall applications and IBC Building Code Chapter 26. Products have been NFPA 285 tested.



XCI Foil
XCI Foil Class A



XCI CG
XCI CG Class A



XCI NB



XCI Ply
XCI Ply Class A

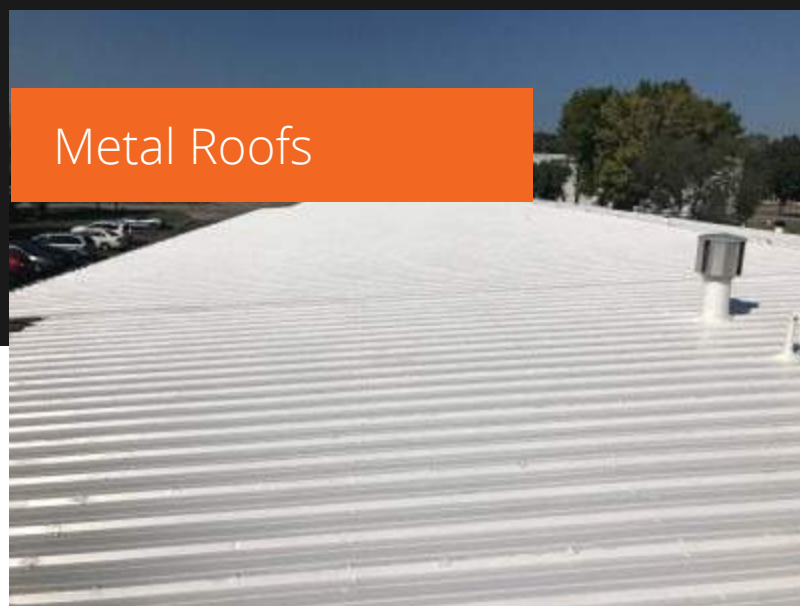


XCI 286





Metal Roofs



Hypalon Single Ply
Roofs



TPO Single Ply
Roofs



Innovative SEBS Coatings Since 1978

For over 40 years, Inland Coatings has been the trusted solution for roofing maintenance and repair. Contractors, building owners, facility managers, and architects alike value the Inland Coatings expertise over any other in roof restoration solutions.

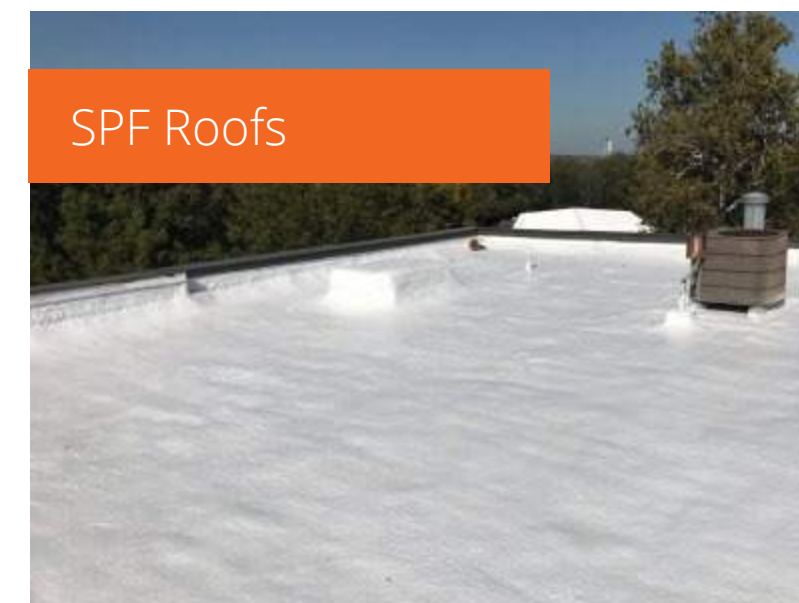
EPDM Single Ply
Roofs



Modified Bitumen
& BUR Roofs



SPF Roofs

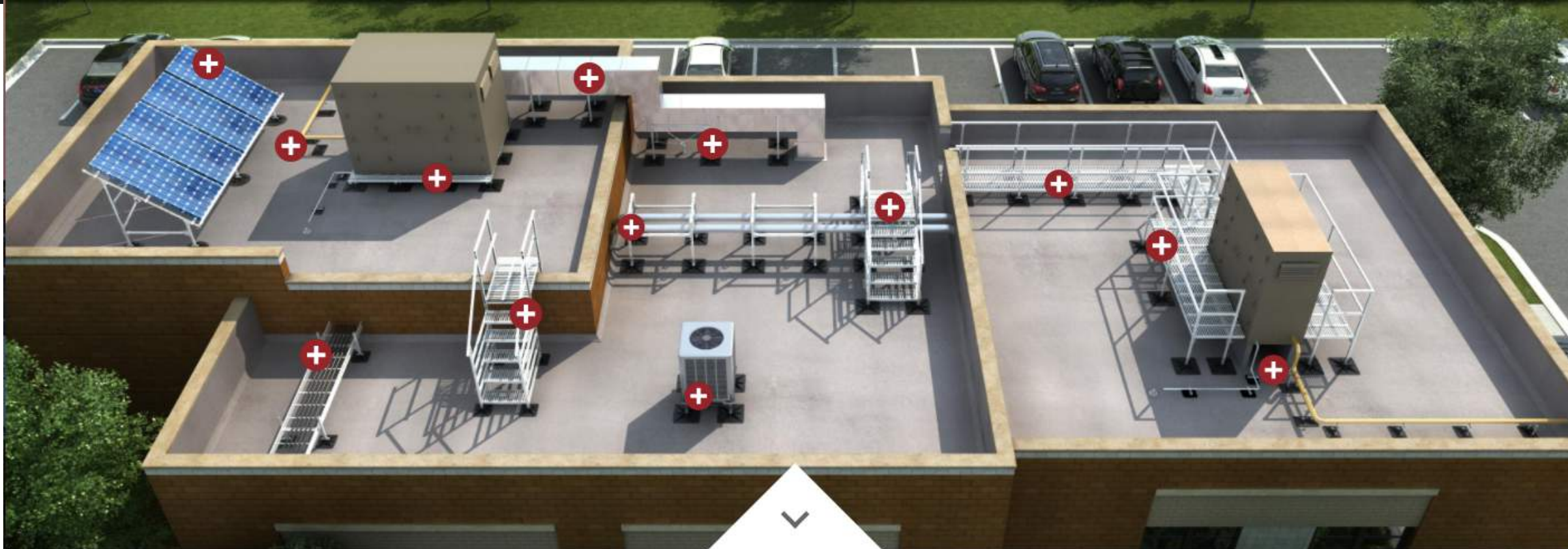


PHP

SYSTEMS/DESIGN

.....

BUILD IT RIGHT.



Pipe Supports



Duct Supports



Equipment Supports



Cable Tray Supports



Walkways / Crossovers



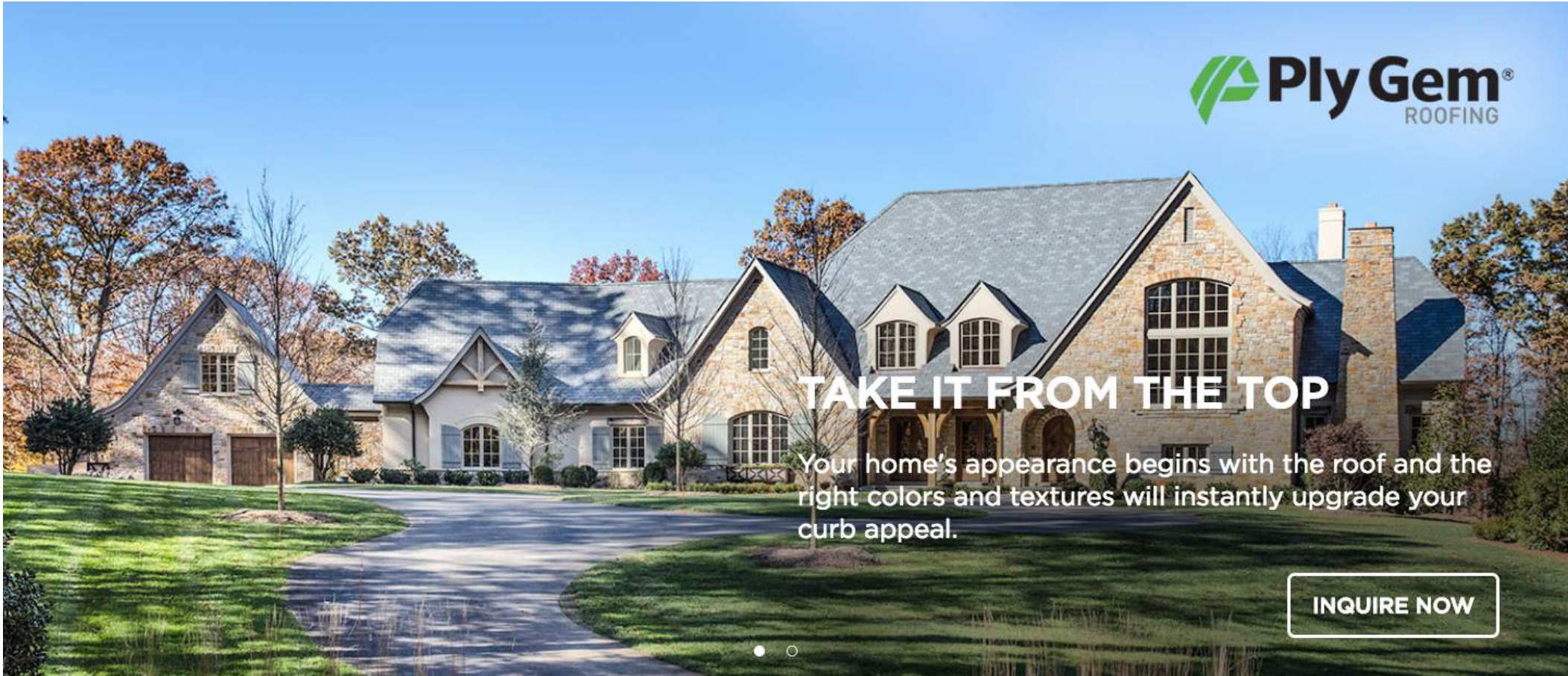
Stairs / Ramps



Platform Systems



Solar Panel Mounts



**A Classic, Revisited.
ENGINEERED SLATE**

You just can't beat a good slate roof. That is, unless you go for our synthetic slate roof tiles. They weigh less, cost less, and out-perform the competition.

[EXPLORE](#)

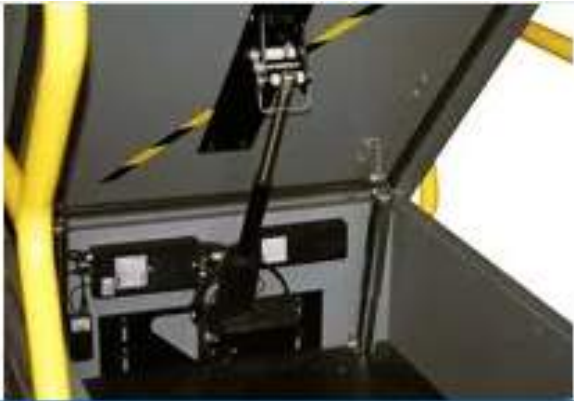


**A Rustic Approach.
ENGINEERED CEDAR SHAKE**

Cedar shingles are a favorite for rustic home renovations. And our composite cedar roofing gives you the look you love with less maintenance and less worry (it's fire-resistant and made to last).

[EXPLORE](#)





AUTOMATIC ROOF HATCH OPENER

A patented design that automatically opens a roof hatch from the ground floor using a keypad or security access card.



ROOF HATCH SAFETY RAILS

A four-sided, patented, 100% steel design with a self-closing gate and two built-in ladder rungs. OSHA-compliant and installs in minutes.



ROOF HATCH

The SafePro Roof Hatch, manufactured of 100% steel for durability and safety, is available in standard and custom sizes.



PERIMETER RAILS

Temporary or permanent 100% steel rail fall protection with stackable bases that are easily installed and stored. OSHA-compliant.





Manufacturing Rep Company

A collaborative gateway to sustainable, compliant and cost efficient building envelope products and assemblies.

Walls

Roofs

Foundations



www.schwabgroup.net