

Figure 1: Graphic representation of the "hemisphere of grounding"

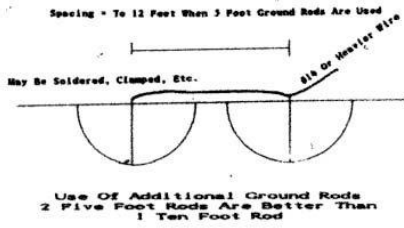


Figure 2: Graphic representation of grounding effectiveness of two ground rods

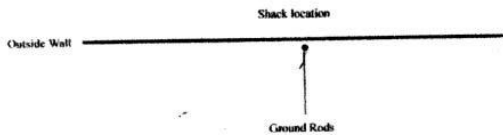


Figure 3: One ground rod should be as close to the shack as possible

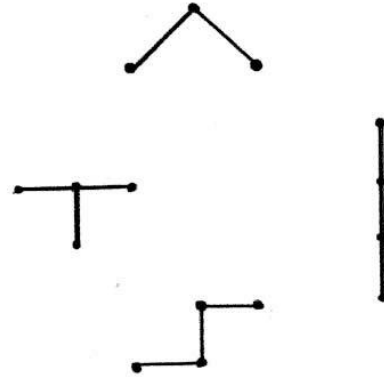
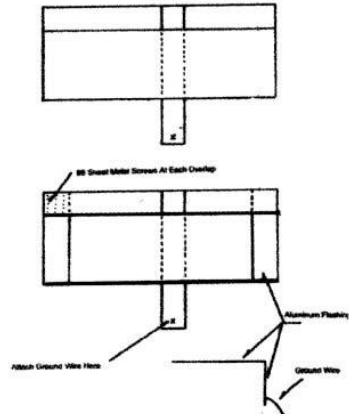


Figure 4: Ground rods can be placed in any geometric configuration as long as they are 12 feet apart for 5 foot long rods.

Desk-Top Ground Planes



Console Ground Plane At K9STH

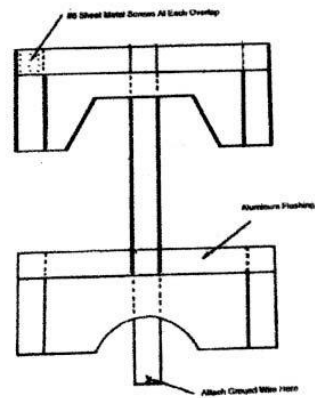


Figure 5: Graphic representations of placement of Aluminum flashing material.