



**LANCASHIRE LOCAL HISTORY FEDERATION**  
**NEWSLETTER**

ISSUE NO. 19 MAY 2017

LLHF NEWSLETTER EDITOR: MRS. M. EDWARDS  
Telephone: 0161 256 6585 email: [m.edwards309@btinternet.com](mailto:m.edwards309@btinternet.com)

**\*DEADLINE FOR NEXT ISSUE: AUGUST 15th, 2017**  
**PLEASE NOTE REMAINING DEADLINES FOR 2017:**  
**AUGUST 15th; NOVEMBER 15th**

Chair:	Marianne Howell	01942 492855	07779677730	<a href="mailto:mariannerh@hotmail.co.uk">mariannerh@hotmail.co.uk</a>
Vice-Chair:	Morris Garratt	0161 439 7202		<a href="mailto:morrisgarratt@sky.com">morrisgarratt@sky.com</a>
Secretary:	John Wilson	03330 062270		<a href="mailto:j.r.wilson@cantab.net">j.r.wilson@cantab.net</a>
Treasurer:	Peter Bamford	01253 796184		<a href="mailto:pjbam4d@gmail.com">pjbam4d@gmail.com</a>
Membership Secretary:	Zoë Lawson	01772 865347		<a href="mailto:zoe.lawson@talktalk.net">zoe.lawson@talktalk.net</a>
Website Manager:	Stephen T. Benson	01772 422808		<a href="mailto:stephen.t.benson@btinternet.com">stephen.t.benson@btinternet.com</a>

\*\*\*\*\*

The Editor cordially invites you to submit your Society information and your own news, notes, reports, articles and photographs.

\*\*\*\*\*

**VIEW FROM THE CHAIR**

By the time you read this, Stockport Historical Society will have hosted our 'At Home' and I can assure you it was a very successful event. These occasions are always very interesting, because the chosen speakers impart their knowledge of their own areas and cast light on often-forgotten aspects of their history. Next year we are to be hosted by Leyland Historical Society for what I am sure will be an equally varied and informative 'At Home' programme. (See date on following page. Editor)

The day included our brief AGM at which we were able to report an increase in the number of member societies from across the County Palatine and even further afield, which is very encouraging.

Our small but purposeful committee has already arranged events for next year, and if you feel you would like to contribute as a committee member to our growing organisation, please contact me. You would be made very welcome.

By November we will have a vacancy for the Newsletter editor. If you would like to consider this role, please do contact me. You would have great support in the handover period from Margaret Edwards.

With very best wishes

Marianne

# The FYLDE HISTORY NETWORK



IN ASSOCIATION WITH LANCASHIRE LOCAL HISTORY FEDERATION

**4 November 2017 ANNUAL DAY CONFERENCE**

Full details will be available later.

=====

**LLHF.....**

**BOOK THESE DATES!**

The Committee has been compiling the future programme and here is what is so far in store for 2018 :

**24 FEBRUARY 2018 DAY SCHOOL**

**THEME: VERNACULAR ARCHITECTURE (4 SPEAKERS)**

**VENUE: PENDLE HERITAGE CENTRE**

**19 MAY 2018 AT HOME**

**HOSTS: LEYLAND HISTORICAL SOCIETY VENUE: TO BE ARRANGED**

Full details will be available later in Newsletter and on the website.

=====

**THINK ABOUT IT.....**

In recent years **our various LLHF events** have taken us, for instance, to HASLINGDEN, BRINDLE, WRAY AND TATHAM, ST HELEN'S, HAIGH HALL, ST ANNES, BURSCOUGH, LANCASTER, PRESTON, STOCKPORT.....

If **YOUR SOCIETY** would like to HOST an AT HOME or a DAY SCHOOL, why not have a word about it with one of the committee, or send an email to the Chair or Secretary? M.E.

=====

**BRITISH ASSOCIATION FOR LOCAL HISTORY**

**BALH's flagship event:**

**Local History Day 2017 Saturday 3 June in London**

Event Location: Resource for London, 356 Holloway Road, N7 6PA

The keynote speaker, Professor Chris Dyer, will speak on

'Local societies on the move: migration and social mobility in the middle ages'.

Other speakers include Professor Geoff Timmins and Dr Alan Crosby on

'Housing and local history: research agendas and practical issues'.

The Annual General Meeting of BALH will be held at 12.30pm and will be chaired by

Professor Caroline Barron, President of BALH,

who will later present the 2017 awards for research and publication, for a society newsletter, and for personal achievement in local history.

For more information and to book your place online see website.

British Association for Local History (BALH), Chester House, 68 Chestergate, Macclesfield, SK11 6DY

Tel: 01625 664524 Fax: 01625 664510 Email: [admin@balh.org.uk](mailto:admin@balh.org.uk) Website: [www.balh.org.uk](http://www.balh.org.uk)

=====

**STOP PRESS**

**Wednesday, 17th May, 2017 at 7.30pm.**

**'Timber-framed Buildings in the North West'**

A talk by Dr. Michael Nevell to **Pendle Forest History Group** at Barley Village Hall.

# LANCASHIRE LOCAL HISTORY FEDERATION

## AT HOME 2017 HOSTED BY STOCKPORT HISTORICAL SOCIETY

### HELD IN THE WAR MEMORIAL ART GALLERY, STOCKPORT

Mr. Morris Garratt, who is the Secretary of the host Society and our LLHF Vice Chair, welcomed the assembled company then introduced the LLHF Chair, Mrs. Marianne Howell, after whose opening remarks the morning programme of three talks began. The talks proved to present Stockport in both considerable detail and broad perspective and were very well received.

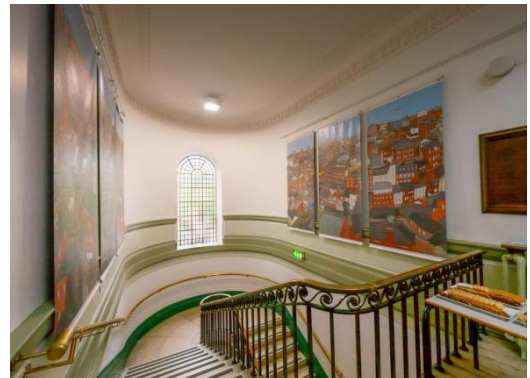
The first was presented by **Mrs. Enid Price**, Chair of the host Society, who drew on slides of the Society's extensive and excellent archive of historic postcards, as well as her own slides, to inform visitors about Stockport's history: a tale of three rivers (Goyt, Tame and Mersey - wrought iron gates giving a view over the latter proclaim 'Stockport to the Sea'); steep bluffs and cliffs (one commercial firm had premises with five exits, each emerging on a different street level from the others) and flights of stone steps linking streets ; an excellent river-crossing; a somewhat mysterious medieval 'castle'; a very fine and varied architectural heritage 'crowned' by Staircase House; and the long and imposing railway viaduct which is a dominant feature of the townscape. **Dr. Peter Wadsworth** took us into the late modern period, his fascinating focus being the famous Strawberry Recording Studio, the first such studio outside London , which achieved great acclaim in the music world and also gave Britain a reputation for significant musical innovation. His illustrative brief snatches of music set feet tapping in his audience and took us down Memory Lane. **Mr. Norman Redhead**, Heritage Management Director (Archaeology) of the Greater Manchester Archaeological Advisory Service based at Salford University, brought the morning programme to a close, his talk and Powerpoint photographs demonstrating that Stockport and its borough have a history harking back ten thousand years; archaeological excavations have yielded evidence of all periods, those at Mellor being particularly dramatic and still being easy to access; and we saw truly spectacular finds, from a range of sites, on the screen.

After the LLHF AGM, which followed, it was time for a buffet lunch, after which members selected venues (from a list circulated in advance) which they would like to visit and sallied forth armed with a very good map provided as guidance. The Federation is very grateful to Stockport Historical Society for arranging such an interesting and varied programme for its visit on 6 May 2017.

Margaret Edwards



Stockport: town War Memorial, unusual in being indoors.



Murals decorate the staircase to our event's venue, Upper Gallery.



'Strawberry' - internationally acclaimed and a source of great local pride  
All photos by Boyd Harris

# INSTITUTE OF HISTORIC BUILDING CONSERVATION

## THE 2017 IHBC SUMMER SCHOOL IS BEING HELD IN MANCHESTER

Thursday 22nd - Saturday 24th June 2017

\*Day School Friday 23rd June 2017

This Conference will focus on *Transport Infrastructure* and will offer lectures, tours, and an evening Reception followed by the IHBC Annual Dinner.

**A Day School** will be held on 23 June at the Museum of Science and Industry, at which Steve Roman will make available the exhibition, *Saving a Century*, reflecting the work of the Victorian Society.

Conference members will consider matters of nation-wide interest:

- \*the development and significance of historic transport infrastructure;
- \*the impact of new infrastructure on the historic environment;
- \*transport infrastructure relating to railways, water, roads and air, and their impact on rural and modern urban landscape.

Visits will reveal aspects of Manchester's historic and modern infrastructure and excursions will take in key sites in Liverpool, Preston and Cheshire.

For further information visit: [manchester2017.ihbc.org.uk](http://manchester2017.ihbc.org.uk)

A telephone number is advertised: 0131 662 0366

=====

### LLHF NEWSLETTER, LANCASHIRE'S ROMAN ROADS AND DAVID RATLEDGE'S RESEARCHES USING LIDAR

1. David Ratledge's work on Roman roads, strengthened and guided in recent years through access to LIDAR, has created a huge amount of interest and David presented a superb and impressively illustrated lecture on his findings to the **Lancashire Archaeological Society** on February 17th, 2017. Accessing the LAS website's blog will lead through links to the LIDAR images. [lancsarchaeologicalsociety.wordpress.com](http://lancsarchaeologicalsociety.wordpress.com)

2. Readers of our LLHF Newsletter have been aware of David's progress since **Issue No. 13** was published in November 2015. David had submitted his first article in the late summer of that year. (See page 13.) His second submission was printed in February 2016, in **Issue No. 14**. (See page 14.) As Newsletter Editor, I felt very privileged to be offered such important material and when David submitted material again, in early Spring 2016, I naturally included it in **Issue No. 15**, which appeared in May 2016. (See pages 8, 9.) I knew that a huge amount of field walking and surveying was being done in the next six months, as LIDAR results were checked on the ground. In early January of 2017, I received David's latest submission, as always well set and splendidly illustrated, and included it in **Issue No. 18**, which came out in early February 2017. (See pages 3,4.)

All this has been a scoop for our Newsletter; and our readers who do not know will not be a bit surprised to hear that David's work appears in academic publications, and he himself is much in demand as a lecturer.

**Society Secretaries please note.**

Margaret Edwards

David's latest report follows.....

# LANCASHIRE'S ROMAN ROADS - A LIDAR UPDATE

## Bailrigg Garden Village, Lancaster

David Ratledge

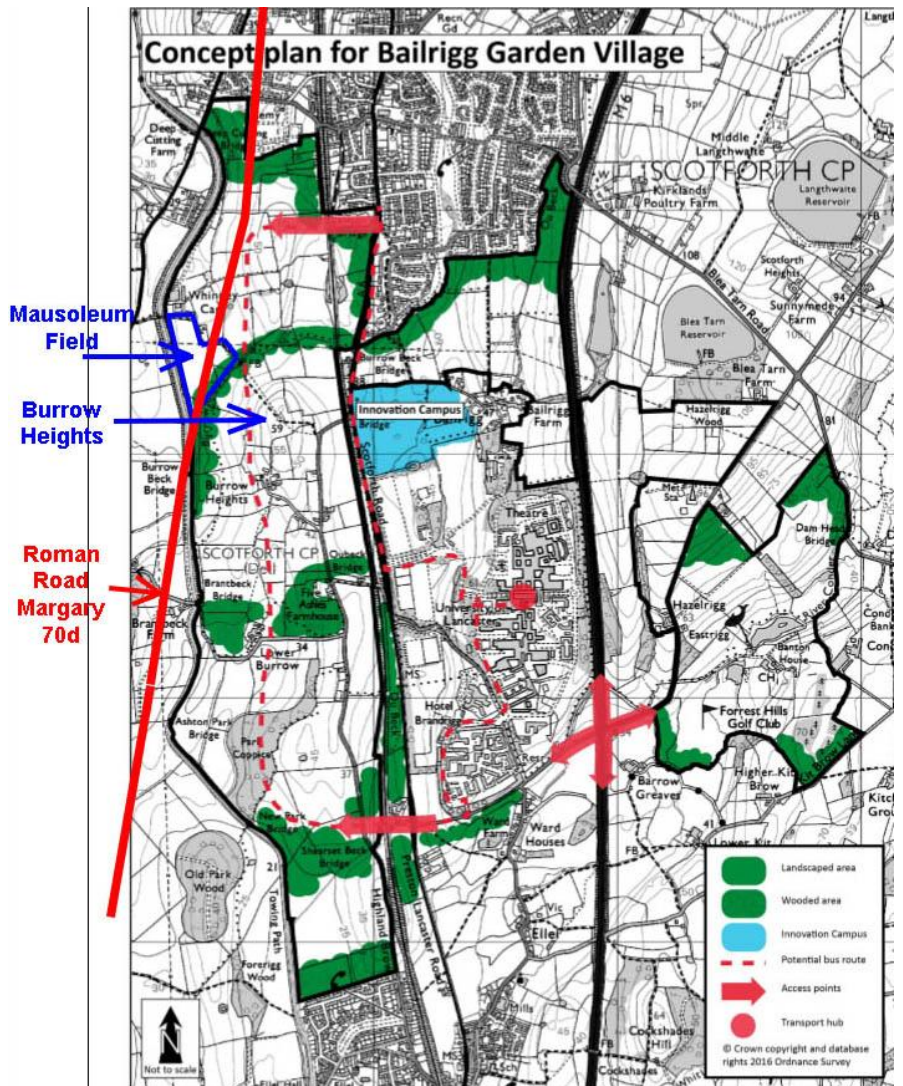
Lancaster City Council is currently preparing its local plan defining policies and potential sites for development. One of the proposed developments is Bailrigg Garden Village, part of the Government's flagship series of "garden villages".

Amazingly, the plan documentation does not include any information relating to any heritage assets or historic landscape character on any of the proposed sites. In the case of the Garden Village this includes proposed development on (1) Burrow Heights; (2) the site of probable Roman cemetery (Mausoleum); and (3) the Roman Road from Walton-le-Dale to Lancaster.

Probably the best document to gain an understanding of the extent of the village is "Bailrigg Garden Village - objectives, scale and planning status". It can be downloaded at:

<https://www.lancaster.gov.uk/assets/attach/1885/Publicity%20Document%20Bailrigg%20Garden%20Village%20Lancaster.pdf>

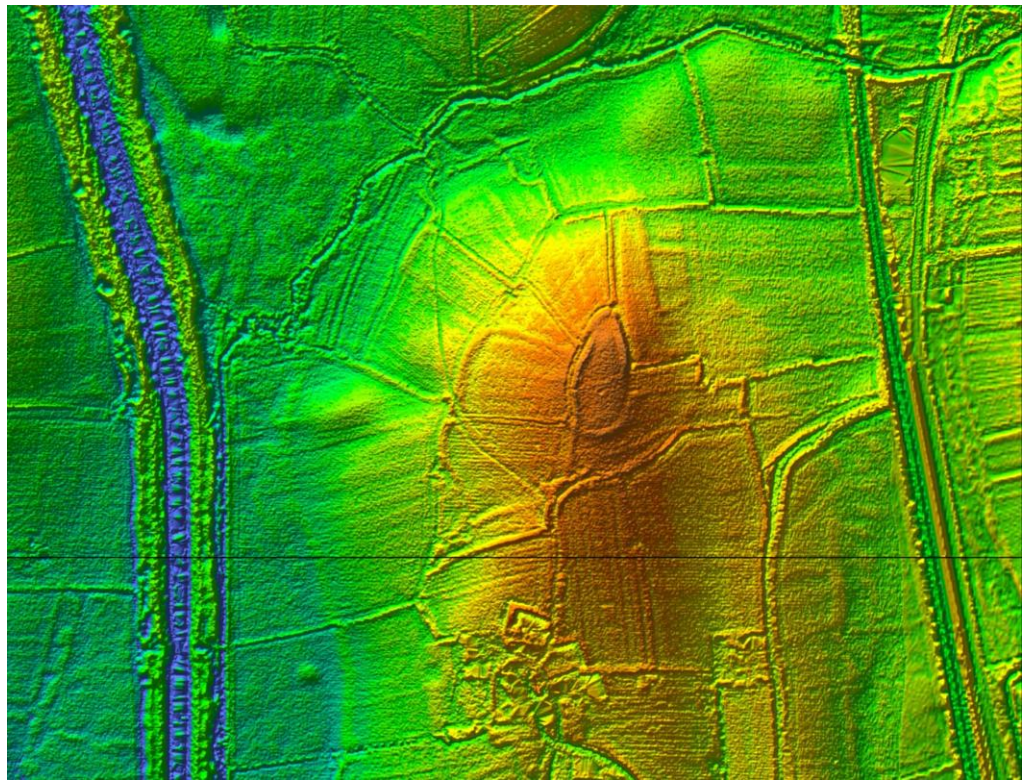
This too has no reference to the Historic Environment. I have therefore added, in the left margin, historic features evident from Lidar imagery (see right).



*Lancaster City Council's Concept plan for the Garden Village. I have overlaid the line of Roman Road from Walton-le-Dale to Lancaster (Margary 70d), site of the Mausoleum Field and Burrow Heights. None of these were mentioned in the documentation.*

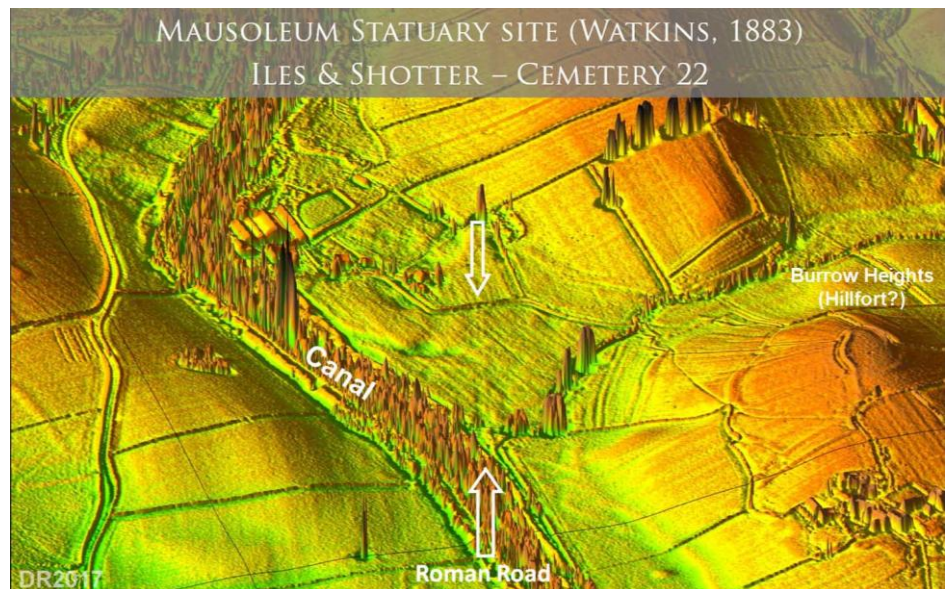
So what is visible in the Lidar imagery? Taking Burrow Heights itself first. This is a very complex and apparently poorly understood site. Both Professor David Shotton and Bailey have reported on finds here (Contrebis 1997 & 1991 respectively) and some excavations took place on the east side of the hill in the 1960s. However, what has confused this site considerably is the belief that the Roman road from the south (Margary 70d) passed on the east side of the hill. This has now been located and passes well to the west of the site (see above). It wasn't the road itself that caused the problems but the site of the famous mausoleum statuary (see later). Because the mausoleum statuary/cemetery was likely to be located alongside the road, the cemetery location was suggested to be on the hill adjacent to the perceived road. Interpreting what was on Burrow Heights therefore became extremely complicated. The Lidar imagery is shown below.

*Lidar Image of Burrow Heights. The railway is to right and the canal to the left. The statuary - mausoleum site is top left.*



Having looked at hundreds of Lidar images from around the country, it appears much more like a small hillfort. However, this is a personal guess but perhaps the name Burrow lends some support to this interpretation.

The second major site is the mausoleum or cemetery site, discovered when excavating the canal in the 1790s. White/Slinger (Contrebis 1992) locate the find-spot field pretty unambiguously. It is therefore surprising that it was "moved" to the hill. An oblique Lidar image of this field is shown right. What also shows is the probable line of the Roman road crossing this very field. This was unknown to White/Slinger so it is a remarkable confirmation of their location for this important site.



For full details of the Burrow Roman Sculptures, with a hypothetical reconstruction of a mausoleum, see Ben Edwards in P.D. Iles and D.C.A. Shotter (eds), *Lancaster's Roman Cemeteries*, (pp.103-7), CNWRS 2009.

Whilst not wishing to stand in the way of such an important development I consider that these sites surely deserve to be fully researched and investigated before it is too late. It is worrying that such a major development can progress so far without any mention of our historic environment. The abolition of its County Archaeology section by Lancashire County Council has done nothing to help protect our precious Lancashire heritage.

**I have made a 3D Lidar video of the sites and it can be viewed at: <https://youtu.be/ukfsOufmmgk>**

The Newsletter of the **Regional Heritage Centre, Lancaster University** has just reported that **Morecambe Bay Partnership** has promoted several events and training opportunities taking place from Spring through to Autumn of this year. I have selected this item for this LLHF issue. (Editor)

**\* Training session: 'LIDAR, Aerial Surveying and Using Drones': Sunday 25 June**

at Warton Village Hall 11:00-16:30.

Learn (i) the essentials of interpreting and using aerial photographs and LIDAR;  
(ii) how drones can be used for surveys.

Led by Historic England's Aerial Investigation Team. The course is free. Pre-booking is required and places are limited. Book via the links at

[www.morecambebay.org.uk/events](http://www.morecambebay.org.uk/events)

For more information contact website above or [info@morecambebay.org.uk](mailto:info@morecambebay.org.uk) or telephone 01539 734888

=====

**ST JOHN'S (WATERLOO) LOCAL HISTORY GROUP**

We meet at St John's Parish Centre (at the rear of St John's Primary School), Denmark Street, Waterloo, Merseyside, L22 9RG  
on the first Tuesday of the month, from 2 pm to 3.30 pm.

For more information phone Paul Baker: 0151 474 2503

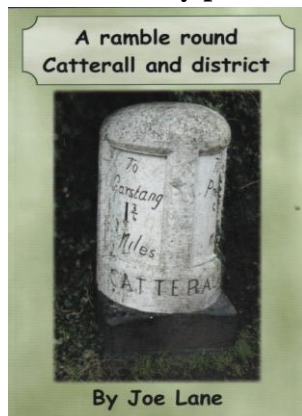
**PROGRAMME**

6th June 'Trenches, Torpedoes, Bombs and Bunkers: Merseyside at War': *Ken Pye*  
4th July 'Liverpool Cowkeepers - A Family History': *Dave Joy*  
1st Aug 'Origins of Liverpool: The original seven streets'. *WALK led by Ann Marshall.*  
5th Sep 'Jesse Hartley, Liverpool's Dock Engineer': *David Hearn*

=====

*A ramble around Catterall and district*

Author: Joe Lane Privately published. Price: £8



The simple-sounding title belies the depth of research undertaken by the author.

\*This 136-page paperback is packed with history, geography, topographical facts, old photos, maps, statistics, reminiscences, reports from old newspapers and fascinating information about the village's little remembered industrial heritage.

Explaining the genesis of the book Joe said, "As a retired civil engineer specialising in water engineering, I have always been intrigued by the former industries which the Rivers Calder and Wyre supported in the village.

"Finding readily-available information about the topic was difficult as Catterall, despite being a major industrial centre for about 100 years from the late 18th century, always seems to get overlooked on historical matters in favour of the bucolic charms of Garstang."

The book's publication is timely as many parts of the parish are likely to see more housing development in the coming years. Anthony Coppin

\* Available from Car Care, High Street, Garstang, and Crimpers, Bridge Street, Garstang.  
All proceeds go to the charity Cardiac Risk in the Young (CRY).

## 'Dig Greater Manchester' Archaeology Festival 2017



At the **Tameside History Forum** held in February it was agreed to take part in 'Dig Greater Manchester' Archaeology Festival 2017 and Fairfield Moravian Settlement was felt to be a good place in Tameside to hold this event. The Settlement was built in 1785 and its buildings and cobbled streets remain largely unchanged today. There is a museum, which opens on a Saturday (from the second Saturday in May until the last Saturday in August, 1pm - 4pm) and this will be the focus of the Archaeology Festival on Saturday 24 June during slightly longer opening hours than normal of 12noon - 5pm. We will be offering the following:

**Walk 1** - Maximum 20 places, at 2pm. - around the original border of the site, looking at what the pre-industrial landscape would have been like when Manchester was a small, distant village.

**Walk 2** - Maximum 20 places, at 3.15pm - round the Settlement, taking in its history and changes.

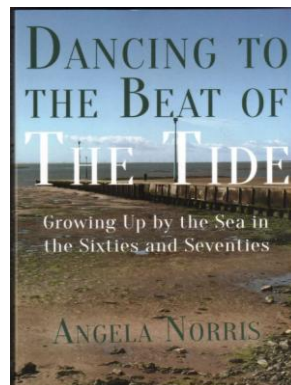
**THE WALKS NEED TO BE BOOKED THROUGH EVENTBRITE**

**Settlement Museum Exhibition** - About Tameside's Local Archaeology & History

Light Refreshments available (all parking in Fairfield High School, Fairfield Avenue M43 6ED )

See Tameside History Forum website: [www.tamesidehistoryforum.org.uk](http://www.tamesidehistoryforum.org.uk)

=====



\* *Dancing to the beat of the tide* by Angela Norris. Matador / Troubador Price: £8.99

The sleepy backwater of Over Wyre has produced several first class writers over the years - eg R G Shepherd (one time deputy editor and country writer of the Blackpool Gazette) and J E Bowman (author of 'When every day was summer'). Now former journalist Angela Norris has joined their ranks, writing a fascinating personal account of what it was like growing up in the 60s and 70s in Preesall and Pilling. Despite the times of her tales being only a few decades ago, her reminiscences and delightful prose jog the memory of those who lived through those times in the area. The focus is as sharp as the writing is incisive.

Angela's portrait shows a countryside district in a state of transition. She describes the changes in character of Knott End and Preesall, via the 1960s building boom, from separate communities to what is effectively now one somewhat urban mass. Few topics are left unmentioned - boyfriend issues, the onset of periods, troubles with teachers, teen fashions and music - not to mention the activities on the back row of the movies (at Knott End's Verona cinema) and many references to local history.

It's the first time a book of this kind about the Over Wyre community has been published. It will be appreciated by those, like Angela, who are children of the 60s and 70s, as well as by 'incomers' to the district, keen to learn more about its recent past.

Anthony Coppin

\* Available from Knott End News and Knott End Post Office or via the author's Facebook page.



## LANCASHIRE ARCHIVES: An important newly available resource

Through its monthly Newsletter, Lancashire Archives recently announced that dealing with the family papers of the late William King Wilkinson of Whiteholme, Slaidburn, had brought to light a collection of military tribunal papers. In 1916 WKW became the military representative to the Bolton by Bowland tribunal which was responsible for handling appeal cases in the Bowland area. Approaching 1500 applications were made and official forms record information relating to a wide range of personal affairs as well as work-related matters relevant to this area, in which farming was a major employer. These were the issues which lay at the heart of the applications - only two appeals were actually made on the basis of conscientious objection. A variety of printed matter distributed to the tribunals to inform their decision-making was preserved along with the official papers. Full name indexes can be accessed online via LANCAT in the DDKW collection. M.E.

=====

### RESEARCH: REQUEST FOR INFORMATION

Roger Smalley, of Clitheroe, is investigating political dissent in the Clitheroe area in the period c.1830-1930 and is looking for primary sources relating to Chartist, SDF, ILP, Liberal party and Co-operative Society activity. Minute books or correspondence, Roger writes, would of course be especially valuable for the work, but all information would be appreciated. If you can help Roger in his quest please write to him at: 1, Bowland Court, CLITHEROE, Lancashire. BB7 1AS

=====

### RESEARCH: INFORMATION REQUESTED ON THE GILLIBRAND AND HULTON FAMILIES

Mrs. Eva Marshall has written to the Federation asking if any members can help her with furthering her family tree. She writes:  
'A young first cousin once removed, living in Canada, is interested in family history. I have gone as far as I am able, and no longer have the ability to travel to Lancashire, but have offered to do what I can. Our maternal ancestors were Gillibrands, with a possible connection to the Gillibrands of Gillibrand Hall, although my Grandfather was in about the middle of a family of at least ten children. I did some research a few years ago and came to a full stop somewhere in the 1700s with two John Gillibrands, each married to a woman called Nan. My Great Grandfather, John Gillibrand, married Mary Jane Hulton, and I have in mind that she was from the Hulton Colliery Family. I have a photograph of them.'  
Anyone who can assist is invited to contact Mrs Marshall at: [eva.marshall23@gmail.com](mailto:eva.marshall23@gmail.com)

=====

### A STORY OF AN EXTENDED LANCASHIRE FAMILY

Martin Hargreaves has contacted the Federation to ask if anyone would like to see the archived history of the Shepherd family of Nelson, a family of three or four generations from about 1880 - 1980. His Great Grandma and Great Granddad had four children and all four family branches are well documented. His Grandfather, John Shepherd, and mother 'didn't throw too much away' and the family history includes photographs, letters, postcards, wedding and funeral documents, newspaper cuttings, etc..

One of the seven files could be of interest to social and political historians. John Shepherd was a 'Man of Nelson' whose life is a part of the town's social and political history circa 1910 - 1974. He was a weaver, conscripted soldier, local socialist pioneer, member of a socialist drama group, International Labour Party member, Labour party member and Chairman, teacher, headteacher, town councillor for many years, alderman and, for one year, the Mayor of the town.

The archive includes flyers for a meeting chaired by John Shepherd when Keir Hardie came to the town in 1911, a Social and Democratic Federation flyer, mayoral record of invitations and visits and mayoral medals, to name just a few records of this man's life.

If anyone is interested in viewing the archive, please contact Martin R. Hargreaves on 0151-678-3341 or 07708993859; or email: [martinrhargreaves@gmail.com](mailto:martinrhargreaves@gmail.com)

Steve Roman has kindly drawn my attention to a new book from Roger Holden, an acknowledged expert on the history and industrial archaeology of the Lancashire cotton mills. M.E.

*Chadderton Mill: The History of an Oldham Cotton Spinning Mill* by Roger Holden.  
PB 80 pages. ISBN 978-0-9956977-0-6 Price: £10.00



Chadderton Mill, built 1884-85, was one of the many cotton spinning mills in Oldham, Lancashire. When it closed in 2000 it was one of the last mills in Oldham to be used by the textile industry, latterly for winding and doubling. Still standing, it is Listed Grade 2 because it is considered to be a good example of a spinning mill of its period. This well illustrated book places the mill in the context of the Lancashire cotton industry, looking at the origins and financing of the mill, together with subsequent changes in ownership. The original construction, layout of machinery and workforce of the mill are described, as are later extensions, including change of use in the 1930s. Many of the illustrations were taken by the author before the mill closed in 2000.

Available on-line from [www.lulu.com](http://www.lulu.com). Also Amazon and The Book Depository. (In all cases simply put 'Chadderton Mill' in the Search to find it)

=====

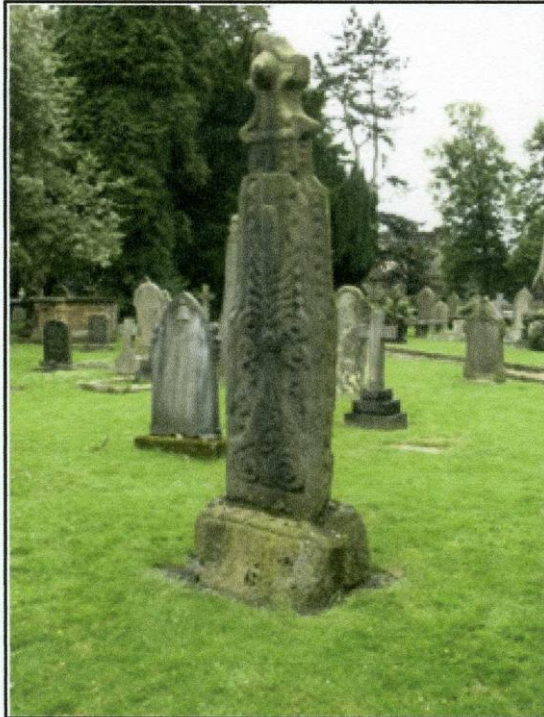
## Blackpool Museum: One step closer!



The Blackpool Museum Project Team has announced that its second round application to the Heritage Lottery Fund has now been submitted; it includes the final plans and costings for the delivery of the Museum in 2020. It completes the development phase of the Project, which has been funded by Blackpool Council and HLF. The Museum will celebrate Britain's love of the seaside holiday and popular entertainment – highlighting Blackpool's significance nationally and internationally and presenting Blackpool's nationally significant collections and heritage for the first time. The Project will also enable the repair, restoration and re-use of the Grade II\* Listed Pavilion and Horseshoe, creating a destination attraction set within the world renowned Winter Gardens entertainment complex. HLF will make its decision this summer.

For more information about the Blackpool Museum Project

see this website: [www.blackpoolmuseum.com](http://www.blackpoolmuseum.com)



### LANCASHIRE ARCHAEOLOGICAL SOCIETY

On 17 March 2017 members and guests heard a well received talk presented by Dr Fiona Edmonds, Director of RHC at Lancaster University, who opened by explaining that, at its fullest extent, the kingdom of Northumbria covered a huge area, from the Humber and the Mersey to the south, up to Edinburgh and most of southern Scotland.

Archaeology shows that after the Roman army officially left Britain, many sites continued to be occupied, probably by former auxiliaries, a classic example being the timber hall at Birdoswald.

Literary sources are predominantly from the northeast viz: Bede's and the Durham chronicles.

Sculpture, however, gives us strong clues as to key locations. e.g. St Oswald's Winwick, St Patrick's Heysham and the battle stone at Nechten's Mere.

Recent excavations have also highlighted the importance of strongholds such as the Mote of Mark and Trusty's Hill, and the Northumbrian royal site at Yeavering.

Current thinking is that post Roman warlords created fiefdoms which subsequently coalesced into the kingdom of Northumbria, and these later gave support to Christianity. In C9 there was fragmentation and shifting control of power. The Vikings took York, but did not have control north of the Tyne or in Strathclyde. The coin hoards which have been found in northwest England suggest the Irish Vikings were trying to move into a power vacuum. Dr Edmonds emphasised we should not confuse Northumbria with Northumberland – Northumbria included the whole the whole of what is now Lancashire and Cumbria.



Dr Edmonds ended by suggesting three local sites we should visit (or re-visit):

Whalley, where King Eardwulf of Northumbria defeated a conspiracy of rebels in 798, and where the church has three very fine Northumbrian crosses in the church-yard;

Heysham, with its ruined Northumbrian chapel dedicated to St Patrick – and its Viking hogback tombstone in the parish church; and

Winwick's little known church, dedicated to the Northumbrian King Oswald, which has another fine Northumbrian cross.

Andrea Rollins

Photos: *A Whalley Cross* -Bill Shannon;  
*St. Patrick's Church, Heysham* - Alexander P. Kapp, via Wikipedia

## **'BOLTON'S EGYPT':**

### **World-renowned collection to be seen afresh**

Bolton Museum is undergoing one of its biggest changes since it moved the collections from the old Chadwick Museum to the Crescent in the 1950s.

The £3.5 million re-display of the museum's world-renowned Egyptology collection, funded by Bolton Council and supplemented by a £200k grant from the Wolfson Trust, will be completed by Summer 2018.

*The exciting new Egyptology Gallery, 'Bolton's Egypt', will showcase the collection, its history and its collectors, and will include an exact replica of the tomb of Thutmosis III.*

Ian Trumble, Collections Access Officer for Archaeology, Egyptology and Archaeology, would like to introduce you to the plans for this new gallery.

Lectures to societies can include the history of the collection, a collection overview, and the new gallery designs, and can last from 30mins to 90 mins, as desired.

Ian's contacts are: [ian.trumble@bolton.gov.uk](mailto:ian.trumble@bolton.gov.uk) or 01204 332245

## **THE UKBMD SITE ([UKBMDNews@ukbmd.org.uk](mailto:UKBMDNews@ukbmd.org.uk)) HAS ANNOUNCED THAT**

**new data has been added at [www.lancashirebmd.org.uk](http://www.lancashirebmd.org.uk) as follows:**

Added 25,174 Births for Bolton RD comprising: Bolton South (1941-1947) Farnworth (1943-1945)

Great Bolton and Lever (1914-1920) Halliwell (1927-1933) Horwich (1923-1930) Little Bolton (1930-1941)

South West Bolton (1935-1941)

Added 53,375 Deaths for Manchester RD comprising: Manchester (1963-1969)

Added 826 Marriages for Blackburn RD comprising: Blackburn Register Office or Registrar Attended (1984-2000)

Added 2,313 Marriages for Bury RD comprising: Tottington, Methodist Chapel, Market St. (1908-2007)

Prestwich, St.Margaret (1945-1962) Radcliffe, St.Andrew (1934-1965) Radcliffe, St.Mary (1920-1950)

Thanks are due to Bob Winder, Geoff Haslam and Tony Foster and their teams for the above.

The Manchester deaths indexing project has now reached its target date of 1969, when there were further boundary changes, and will, at least for the present, proceed no further.

This is a good opportunity to thank Geoff Haslam and all of his team of on-site and home workers for this considerable achievement. John Marsden

I would like to add my thanks to those of John Marsden. Jim Lancaster (Bury, Lancs.)

## **Chartered Institute of Library and Information Professionals**

### **LOCAL STUDIES GROUP NORTH WEST BRANCH**

#### **Digital Study Morning at the Museum of Wigan Life**

- \* This study morning will help you to improve your digital knowledge and learn new digital skills.
- \* It takes place in the Museum of Wigan Life, the home of Wigan Local Studies.
- \* Also included is an exclusive tour of the Museum of Wigan Life and their new exhibition, Egyptian 'Animal Mummies'.

Learn how to reference local studies collections or local history knowledge in Wikipedia through a practical, hands-on session with Wiki experts.

Antony Ramm and Ross Horsley from Leeds Library will present a talk on the Leeds Libraries heritage blog 'The Secret Library'. The blog highlights local studies collections and rare books.

**CILIP LSGNW will hold a short AGM following the study morning.**

**Wednesday 14 June 2017 ~ 10.00am – 1.00pm**

Free, but limited places

Booking is essential. Detailed advice on travelling to the Museum can be found here:

<https://www.wigan.gov.uk/Resident/Museums-archives/Museum-of-Wigan-Life/visiting-the-museum.aspx>

To book or for more information please contact Hannah Turner at [archives@wigan.gov.uk](mailto:archives@wigan.gov.uk)

# MOURHOLME LOCAL HISTORY SOCIETY



## Lecture Programme 2017-18

Meetings are held in Yealand Village Hall at 7.30 p.m. Our talks generally finish by 9.00 p.m. followed by tea and coffee

**NEW SEASON BEGINS Wednesday September 27th**

*Debtors of Lancaster Prison – Dr Graham Kemp*

This castle guide shares his considerable knowledge in an illustrated talk. Images include 'Hansbrow Hotel', as the debtors' prison quarters were known.

=====

### **TAMESIDE LOCAL HISTORY FORUM SECRETARY CHRISTINE CLOUGH REPORTS:**

*It was with great sadness that I heard from Glenda Rose that E. Alan Rose, our Chairman and founder member, had passed away suddenly on the morning of the 21st March 2016. Alan was a much respected historian and friend to us all and he will be greatly missed. It has been proposed that we will remember him by way of something appropriate, perhaps a plaque.*

=====

- \*A decision was made in 2016 to join the Lancashire Local History Federation; this, along with membership of the Greater Manchester Federation, gives the Forum contact with History and Archaeological groups throughout the Greater Manchester area and Lancashire.
- \*Heritage Open Days is still a priority event for the Forum members; the theme last year was WATER and 30 events all told took place. Volunteers are essential to the success of this project. A Tameside leaflet was funded by the Manchester Guardian Society Charitable Trust.
- \*The *History on Your Doorstep* group worked diligently, researching the Cockbrook area of Ashton; this culminated in a wonderful exhibition at the Astley Cheetham Gallery. At the opening of the exhibition we were delighted to have Glenda and Michael Rose as our guests, as it was dedicated to the memory of Alan Rose. The group was founded by Alan and Jill Cronin 18 years ago and now concentrates on research, meeting every Thursday at the Local Studies Library, Ashton.
- \*This year Dukinfield Old Chapel has secured funding from HLF to restore the church to its former glory. A support letter from the Forum was sent to the funders.
- \*Forum volunteers are to conduct tours around the Old Ashton Baths, now renovated for small business ventures.
- \*Members manned promotional stalls at Manchester Histories Festival, the Arcades shopping centre in Ashton, and Stalybridge craft market. Thanks to the volunteers, and also to Gay Oliver for our new promotional leaflet.
- \*In June members visited Llangollen, including the beautiful Plas Newydd house and gardens.
- \*We visited Denton Local History Society's exhibition at St Lawrence's Church, and saw a wonderful display illustrating childhood in the past.
- \*It is hoped that progress on deciding the future of Newton Hall will soon be made.
- \*On the 28th July Gorse Hall and the churches connected to Beatrix Potter's family commemorated 150 years since her birth. All the churches opened for 4 days, presenting exhibitions illustrating the connections. Sadly a planned walk had to be abandoned due to heavy rain. The Mayor and Councillor J. Lane opened the events.
- \*In November we held our yearly social at the Bridge Café at Portland Basin Museum and had a most enjoyable lunch and get-together.
- \*We promoted the Forum and its work by having a Christmas tree at the St John's Church Festival, Hurst.
- \*On the whole 2016 was a difficult year but we are all determined to save and promote heritage in Tameside, and some individuals are also doing splendid work in research, publishing books, leading walks and giving talks.
- \*We have been sorry to hear that Larysa Bolton will be leaving Tameside Local Studies.
- \*Thanks were recorded to all who had helped and supported the Secretary and Officers.

**Two new publications from Jennifer S. Holt** are currently available as special offers:

*The Diary of Thomas Fenwick Esq. of Burrow Hall, Lancashire, and Nunriding, Northumberland 1774 to 1794.*

List and Index Society Special Ser., 47-50 4 vols. 1364 pp. hardback.

Available at £85 until 30 June 2017

More information and order via [www.listandindexsociety.org.uk](http://www.listandindexsociety.org.uk)

*The Hornby Castle Estates, Agrarian Change from the 1582 survey to the 1751 Sederunt.*

Chetham Society, 3rd series, 52, normally £39.95 but with a pre-publication offer of £25.

Order via [t.j.thornton@hud.ac.uk](mailto:t.j.thornton@hud.ac.uk) OR

General Editor, Professor Tim Thornton, University of Huddersfield, HD1 3DH

Cheques payable to 'Chetham Society'.

---

## **SOUTH RIBBLE MUSEUM & EXHIBITION CENTRE**

The Old Grammar School, Church Road, Leyland. PR25 3FJ

Tel 01772-422041. [www.southribblemuseum.org.uk](http://www.southribblemuseum.org.uk)

Sat 27 May 11am. '150 Years of *North End*'. Illustrated talk by David Hunt.

At Whitsuntide 1867 a small band of cricket enthusiasts on Moor Park finally settled on their new name, and the *North End* club of Preston played its first match a century and a half ago this weekend, on May 29<sup>th</sup>. A year later, to avoid confusion, they decided they were *Preston North End*, then took up rugby, and then football. Find out what became of them.

Sun 28 May 1 - 4pm. Special Whit Sunday opening.

2pm. 'Exploring Leyland Church'. Local History walk. Meet at the museum.

Sat 3 June 10 - 12pm. Refreshments available in church. Exhibition Closes.

June 6<sup>th</sup> - July 1<sup>st</sup> Leyland Art Society

Opening Times: Tuesday & Friday 10-4pm; Thursday 1-4pm; Saturday 10am-1pm.

**Children and young persons must be accompanied by an adult.**

---

**Leyland Historical Society** opens its '50th anniversary Season' in September. A full year's programme is available and at the end of it the Society's actual 50th Anniversary will be celebrated. A special leaflet has been produced - details on the website.

---

## **MANCHESTER CENTRE FOR REGIONAL HISTORY**

1. Manchester Centre for Regional History announced that later this year the MCRH will become the Manchester Centre for Public History and Heritage. Professor Melanie Tebbutt, the Head of the MCRH, explained that the range of the research work of the Centre has increased since 1998 and the change of name has been adopted to reflect those changes and also changes in the Centre's publications. In addition to a focus on the histories of Manchester and its region, material in studies, lectures and writings will include public history, heritage and archaeology.

2. Publ. by the Centre, *Manchester Region History Review* Volume 3 (Spring 2017) now out.

---

## **Warrington History Society**

**Yankee Doodle Dollar!** Posted on Feb 10, 2017 10:44 pm

On its interesting and well-stocked website, the Society announced 'the first of a series of special articles'. It 'looks back at the impact Burtonwood's gigantic American Airbase had on the town between 1942 and 1993', fixing on 1957 and reproducing a report on the multi-million pound contribution the base was having on the local economy. The website writer explains that 'The report, slightly edited for ease of reading, first appeared in the 'Burtonwood Beacon' newspaper in Autumn 1957.'. M.E.

---

**50 Finds From Manchester and Merseyside – Objects from the Portable Antiquities Scheme**

by Vanessa Oakden

Amberley Publishing November 2016 PB 9781445658551 96pp 180 illustr. Regular price: £14.99

Full and interesting review by Dave Roberts in the CBANW Spring 2017 Newsletter.

## Bolton architect: Richard Knill Freeman

David French, a member of the Manchester Group of the Victorian Society and an independent researcher, published in the MGVS autumn Newsletter a most interesting and well-illustrated paper on this Bolton architect of national repute, whose practice 'was one of the largest in the north west of England between 1870 and 1904'. He also 'designed houses and churches in Moscow and San Remo in Italy'.

Knill Freeman was an active member of the Lancashire & Cheshire Antiquarian Society and 'led members on a tour of the church at Turton which he had extended and furnished in May 1890.'. Lancashire churches which he designed included St Augustine, Tonge Moor, Bolton; Holy Trinity, South Shore, Blackpool (French mentions that Pevsner considered this to be Freeman's masterpiece); St Aidan, Bamber Bridge; St Lawrence, Barton; Christ Church, Heaton, Bolton; and St Catherine, Horwich. Richard Knill Freeman died on June 23, 1904, aged 64. M.E.

Linked with this, the **MANCHESTER GROUP OF THE VICTORIAN SOCIETY** has arranged the following event, which will be led by Anne Hodgson, David French and Michael Shippobottom.

### THURSDAY 13 JULY 2017 - ADVANCE NOTICE Walking and minibus tour

#### *Richard Knill Freeman: Bolton Architect.*

This tour starts outside Trinity Street Railway Station, Bolton, at 10.00 am. There will be a guided walk around Bolton town centre looking at buildings by Freeman and other Bolton architects until 11.15 am, after which we will travel by minibus to various Bolton suburbs.

There will be a short presentation and morning coffee at our first stop, St Augustine's Church in Tonge Moor. We will view other Freeman buildings on the way to Doffcocker, where we will have an informal sandwich lunch (vegetarian options available). After lunch we will stop at Christ Church, Heaton, our final viewing point. The tour will then end back at Trinity Street Railway Station at about 4pm.

The charge for the day is £25.00, which includes morning coffee, lunch, donations and notes. There are limited places as this is a minibus tour. (So first come, first served!).

To book a place please email [anne.hodgson@hotmail.com](mailto:anne.hodgson@hotmail.com). Arrangements for payment and further details will then follow.

If the event is oversubscribed then a repeat tour may be arranged at a later date.

---

### *Images of the Past: Coal Mine Disasters in the Modern Era c.1900 - 1980*

by Brian Elliott.

PEN & SWORD History. February 2017.

Price: £14.99. 176pp. 200 col. illustr. ISBN 9781473858848

Foreword by the Curator of the Big Pit, the Welsh national mining museum.

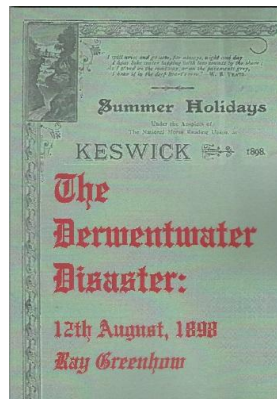
The author here provides a detailed overview of mining disasters in the modern era, using much previously unpublished material. He has been a freelance writer and editor for many years during which he has published a number of books relating in particular to Yorkshire mining.

## Horrorific accident of 1898 brought great sadness to Lancashire families

### *The Derwentwater Disaster: 12th August 1898*

by Ray Greenhow.

Bookcase. February 2017. Price: £10 pb. 117pp. illustr. ISBN: 9781912181001



During other researches in police records, the author, a retired Inspector of Police in Cumbria, chanced upon a reference to this dramatic incident. The case absorbed his interest, especially when he made inquiries and found that no-one he approached had heard of the incident and nowhere in Keswick was there a plaque or other monument related to the accident. A summary of the circumstances turned out to be as follows.

In August 1898 five young ladies from Nelson, all of whom were Sunday School teachers at Carr Road Wesleyan Chapel in Nelson and workers at Lomeshaye Mill, went on a Co-operative Holidays Association holiday in the Lake District and stayed in Portinscale. On the 12th of that month, joined by three male colleagues, they set off from Nichol End to row across Derwentwater. Unfortunately the trip ended in what has been described as 'the worst boating tragedy in the Lakes in modern times'. All three men survived but all five ladies drowned. Their bodies were recovered later that day. In due course a single funeral was held in Nelson for all five ladies, and their bodies were buried in a single grave in Nelson Cemetery. On 20th May 1899 an imposing memorial measuring nineteen feet in height was erected on the grave in memory of the ladies and marking the circumstances of their death. It remains the tallest memorial in the Nelson Cemetery.

Ray Greenhow carried out very detailed and thorough research to produce this book; relevant inquest records were not available, his main sources thus being reports in local newspapers. His book can be obtained from Bookcase. It featured in the 'Words by the Water' Literary Festival on 6th March 2017 at the Theatre by the Lake, Keswick.

Telephone: 01228 544360 email: [bookcasecarlisle@aol.com](mailto:bookcasecarlisle@aol.com)

Margaret Edwards (based on submitted material and various reviews obtained via internet).

**NOTE:** Readers interested in seeing illustrations of the monument referred to above, and of the Carr Road Wesleyan Chapel (it closed in 2002), will find examples on the Nelson Cemetery website and associated sites. M.E.



**NOTE:** Anthony Coppin tells me that at the time of publishing no further report can be made on the restoration of the Plover Scar lighthouse as the lantern has not yet been replaced. (Ed.)

**NOTE:** Thursday, 13th July, 2017 2 – 4pm. Cumbria Vernacular Buildings Group event: Walkabout in High Newton, Cartmel peninsula (Lancashire North of the Sands). Leaders: Nigel Mills and Stuart Harling of the Cartmel Peninsula Local History Society. Cost: £5 (members only). For further information about other CVBG events in 2017, **and how to join**, visit website [www.cvbg.co.uk](http://www.cvbg.co.uk) or

telephone Membership Secretary Mike Kingsbury 015242 76434.

Forthcoming events include a visit to Honister Slate Mine (23rd May) and

a visit to Dent and Dentdale, to visit farmsteads (17th August).

K. Illingworth



# LANCASHIRE ARCHAEOLOGICAL SOCIETY

## FOUR SUMMER EVENTS

### 1. Friday 19 May, 7.30pm for 8.00 : ANNUAL DINNER

at the White Bull at Alston, meeting there. No need to book or to pre-choose menu, but please inform the Secretary if you plan to attend (01772 709187). The White Bull is on Preston Road, before you get to Longridge; post code PR3 3BJ. See website: [whitebullalston.com](http://whitebullalston.com)

### 2. Visit to The Old Medicine House, Blackden, Holmes Chapel, Cheshire CW4 8BY on Saturday 10 June.

The Blackden Trust was set up by the author Alan Garner in 2004, and cares for a Tudor house and gardens in an acre of land in the Cheshire countryside that has been inhabited for ten thousand years. See the Trust's website: <http://lancsarchsoc.us3.list-manage.com/track/click?u=04bbaf9e8e33586adc284501f&id=1568815e78&e=d990be7eb2>.

The visit will involve a talk and tour from 2 - 4pm. Cost: £10 per head. Meet in the car park at 1.45pm. Car - sharing is suggested. A further venue in the vicinity for a morning visit – details to be circulated later - is being investigated.

### 3. Saturday 1 July, a visit to the Ribchester Dig

This is being run again this year by UCLan Tour. Meet at the site at 2pm – precise details later. There will be no cost but making a donation is suggested.

### 4. A Tour of the Lancashire Conservation Centre, St Mary's Street, Preston, PR1 5LN Saturday 23 September, at 10am.

The tour lasts approximately 2 hours. Cost: £6 a head.

The studios, which do all the conservation work for Lancashire's Museums, are set within a Grade II Listed Victorian Church. There is limited parking at the site.

Mavis Shannon

## THE FRIENDS OF LANCASHIRE ARCHIVES

FLA has sponsored the production of an **invaluable booklet** giving comprehensive information on the MANY services and events available at or through **Lancashire Archives**. The booklet covers the period April - September 2017 and includes details of talks, visits, tours and events. Many of these are free of charge. Everything you could wish to know about how to make use of the **documents** (even if you're a beginner) that are stored at LA can be found here. There are talks for people free during the day or those who work and are free only in the evenings. **Here is a 'taster' of what LA offers in Preston and around Lancashire.**

- \*1. At LA in Preston, 12-30 to 1.30pm: May 31 Asylum records for family historians - Kathryn Newman  
Jun 14 Coroners' records for family historians - Victoria McCann  
Jun 28 Probate records for family historians - Anna Watson

Phone 01772 533039 or email [record.office@lancashire.gov.uk](mailto:record.office@lancashire.gov.uk) **to book a place.**

- \*2. At Lancaster City Museum, Market Square, Lancaster, LA1 1HT

Friday Jun 9 from 1pm-2pm

The Archives of Abbots & Co, Stained Glass Manufacturers of Lancaster - Victoria McCann

**To book a place** contact the City Museum 01524 64 637.

- \*3. At LA in Preston: *Saturday Sept. 9, 11am-3pm Heritage Open Day*

Exhibition of Preston Building Plans, including the iconic Preston Bus Station,  
and tours behind the scenes at Lancashire Archives.

Further information will be available on our web site: [www.lancashire.gov.uk/archives](http://www.lancashire.gov.uk/archives)

- \*4. Archivists sometimes visit a library within the county and anyone interested has the chance to chat to the archivist and also to see items from that library's own collections that are securely held at LA in Preston. The first session this year was at Lancaster Library on Thu Apr 27, 12-1.30pm; the next will be at

**Burnley Library** on Thu Sep 14, 2-4pm.



## Friends of Lancashire Archives

Charity Registration Number 518611



### An introduction to the earldom, duchy and palatinate of Lancaster and their records

a talk by Dr Mike Derbyshire, local historian and author, to celebrate the creation of the Earldom of Lancaster in 1267

Thursday 1 June 2017 at 2.30 pm

After a brief review of the formation of the county of Lancashire, Mike will discuss the creation of the earldom and talk about the three earls and the three dukes of Lancaster. He will then move on to the radical reforms of Henry IV, the palatinate and the post-1399 circumstances of the duchy. In passing, there will be an explanation of why there is not likely to be a visit by the Queen to Lancashire or, indeed, much pomp or revelry, on 30 June 2017, the 750th anniversary of the creation of the Earldom of Lancaster and the start of the Lancaster heritage. And finally, he seeks to explain the vast quantity of records that the palatinate and duchy have bequeathed to us.

Lancashire Archives, Bow Lane, Preston, PR1 2RE  
Thursday 1 June 2017 at 2.30 pm

£5.00 including refreshments

Places are limited and **booking is essential**. If you would like to enrol please enquire by email to [record.office@lancashire.gov.uk](mailto:record.office@lancashire.gov.uk) OR telephone 01772 533039 OR ask in person at Lancashire Archives, to find out if a place is available.

Once a place has been reserved payment must be made no later than 26 May 2017 by BACS (see below for details) or by cheque (payable to Friends of Lancashire Archives and sent to, Earldom lecture, Lancashire Archives, Bow Lane, PRESTON PR1 2RE)

For BACS payments please use the following details:

Sort Code: 16-28-33 Account number 11771886. Please ensure that you give your surname as a reference.

=====  
**Cumbria Local History Federation** will hold its 2017 Convention on Saturday 14 October. The theme is: **“Some History of the Furness Peninsula”**. The CLHF will co-host the event at Askam Band Hall with the History of Kirkby Group and the Askam History Group. Full details and booking arrangements will be advertised in the summer.

# LANCASHIRE ARCHIVES

*There's 'a lot going on' at Lancashire Archives and I have based the following items on LA Newsletters which have reached me since our last issue came out. They appear here with permission. M.E.*

Some interesting facts and figures arising from the last eighteen months...

- \*Users of Lancashire Archives awarded a rating of 9.5 out of 10 overall to the service;
- \*Satisfaction with the document production delivery system was 100%.
- \*Usage of the website before a visit has greatly increased and use of the online catalogue rose from 39% to 53%.
- \*Eighteen months ago the average length of a visit to LA was 3.3 hours. This had increased to 4.5 hours (mean average) by last Autumn.

*I found it interesting to learn that visitor numbers had reduced somewhat, but the people who do go to do research are now staying a lot longer. M.E.*

Those who went down to the sea in ships...

The Lancashire Crew list indexing project is being funded by the Federation of Family History Societies and is now well under way. Alison Ferguson (the former LA volunteer support officer) has been recruited to support the volunteers each Tuesday.

Those involved are finding fascinating material in the course of their work; in fact, some of them have done follow-up research on ships mentioned in the lists and several interesting adventures have been uncovered. Jacquie Crosby, Lancashire Archive Manager, is fully convinced that the lists will form a major archive for family historians.

The *Whittingham Lives* project is a two-year joint venture between Lancashire Archives, Lancashire NHS Care Trust, the University of Central Lancashire and a group of enthusiastic individuals and volunteers. Last year funding was obtained from the Heritage Lottery Fund, Arts Council England and several benefactors.

The Whittingham Asylum was extremely important in Lancashire's life and a substantial existing archive records lives and memories relating to the people who lived and worked there. It is this archive on which the project plans to build; the LA Newsletter for March 2017 mentions these aims:

- \*to produce creative work inspired by existing archive material;
- \*to use this creative work to deepen understanding of life at Whittingham for staff and patients;
- \*to lead to the collection of more recent experiences from staff and patients;
- \*to 'use the words of the past to stimulate debate about mental health and well-being today'.

The project was launched on 27 March at an event held at the Student Union of UCLan. Project Manager is Sue Flowers, who can be contacted at: [sue@greenclose.org](mailto:sue@greenclose.org)

=====

## WIGAN ARCHAEOLOGICAL SOCIETY

1. WAS has continued excavation of the intriguing stone which lies on the roadside part way down Toddington Lane in Haigh, reported in the April Newsletter.

An intriguing puzzle emerged as further stones were uncovered. It became clear at last that these were the foundations of a dry stone wall and that the large stone which had prompted the dig was the wall's terminal end. A small selection of recovered pottery suggested a C19 date and map research of early OS maps showed continuous quarrying in the relevant area in C19 and C20. The 1849 map records quarrying precisely in the area where the excavation was carried out.

2. When the WAS newsletter came out, the Society was due to hold its usual monthly lecture in the Standish Suite of the Brocket Arms, the speaker being Mark Fletcher from Matrix Archaeology. His subject was to be Manchester's 'Mythical' Castle. Although mentioned in late C12 and early C13 it has never been located.

M.E.

***“Any help possible will be given” : a website on the history of  
Manchester and Salford Women’s Trade Union Council, 1895-1919***



The Mary Quaile Club has set up a website containing the complete Minutes of the Manchester and Salford Women’s Trade Union Council, 1895-1919.

The MSWTUC was set up to organise women into trade unions in some of the low-paid, unorganised trades in Manchester and Salford, including cigar makers, fancy box makers, sewing machinists, tailoresses, upholsteresses and weavers. The organising work was done by paid organisers, including Frances Ashwell, Sarah Dickenson, Eva Gore Booth and Mary Quaile.

The Minutes, long lost, came to light in 2016 during research into the life of Mary Quaile. They have been transcribed in full by Bernadette Hyland (Mary Quaile Club) from the hand-written originals, giving a fascinating insight into trade union organising amongst women. The original handwritten minutes have also been placed on the site.

This project has been made possible by donations from a number of trade unions and individuals and the Lipman-Miliband Trust. An account with pictures of the launch of the website on Saturday 29th April 2016 can be found here: <https://maryquaileclub.wordpress.com>

MSWTUC website address is: <http://www.mswtuc.co.uk>

Bernadette Hyland, who transcribed the Minutes, has written an article about the MSWTUC for the *Morning Star* (Monday 1st May 2017) which can be found at <https://www.morningstaronline.co.uk/a-df12-A-new-website-to-celebrate-the-trade-unionist-sisters-of-the-north-west#.WQcTzMaltPY>

=====

**VERNACULAR ARCHITECTURE NEWS FROM KEVIN ILLINGWORTH**

**Saturday, 17th June, 2017 10am.**

Vernacular architecture walks to farmhouses in and around Bolton-by-Bowland, Forest of Bowland. A full-day visit, organised by Kevin Illingworth for the Yorkshire Vernacular Buildings Study Group, taking in Fooden Farmhouse, Fooden Hall, Bolton Peel, Broxup House, Wycongill, Alder House Farm, and a village walkabout. YVBSG members have priority, but visitors are welcome to fill any remaining places. Non-members can join on the day or beforehand by visiting [www.yvbsg.org.uk](http://www.yvbsg.org.uk) Lunch at the village tea-rooms/shop.

If you want to come, please telephone Kevin Illingworth 01422 844941 or email [j.k.illingworth@btinternet.com](mailto:j.k.illingworth@btinternet.com) leaving your telephone number and saying if you want lunch. Meet at Bolton-by-Bowland car park/toilets at 10am. or park around two village greens.

**Thursday, 27th July, 2017. 1.30pm**

A visit to Wardley Hall, Worsley, Salford, organised by Kevin Illingworth for the Calder Valley Historic Buildings Group (Yorkshire)

Wardley Hall is the official residence of the catholic Bishop of Salford. The Hall (c.1500) is timber-framed and includes some C16th or C17th brickwork. Built to an irregular courtyard plan, it has a tremendous moat (Pevsner), even though 'the motorway took some of the moat away'. There is no admission fee, but donations are welcome.

If you want to come, please telephone Kevin Illingworth 01422 844941 or email [j.k.illingworth@btinternet.com](mailto:j.k.illingworth@btinternet.com) (after Thursday, 25th May) leaving your telephone number and stating whether you want lunch at Worsley Old Hall (before the visit to Wardley Hall).