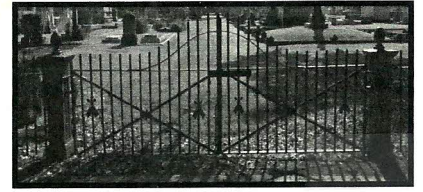


ST. JOHN'S HISTORIC CEMETERY ASSOCIATION

FALL 2016 NEWSLETTER

SUMMER "DOINGS"

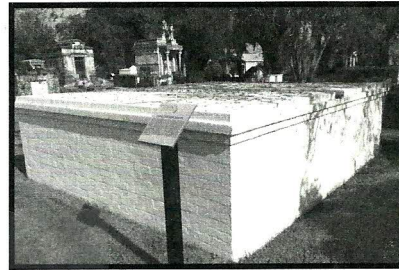
Andrew's Welding & Blacksmith Shop in New Orleans completed the restoration of the front and back Cemetery gates and re-installed the gates. They should be good for another 100 years. (The surround fence and gates are THAT old, this year.) The rear gate, on Church Street, had been inoperable. Now, it can serve for passage of lawn maintenance and funeral vehicles, leaving the front gate primarily for pedestrian access. Funding for the gate repairs came from The Lorio Foundation, for which we are thankful.



Refurbished rear cemetery gate made possible by a Lorio Foundation grant.

CEMETERY TOMB WORK

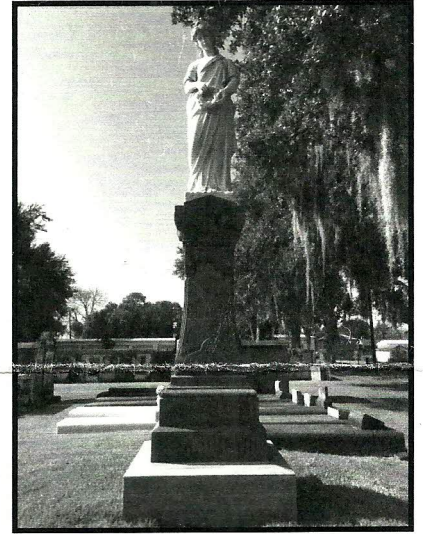
Tomb repair work was halted until the attending mason, Theodore Pierre of New Orleans, recovered from illness. He should be back in the Cemetery soon, completing one task and beginning others. A local restoration mason, Stanley Baker, now is able to assist. Current grant funding mainly is going to tomb work, especially where families are impossible to contact about attending to problems.



Beatby Tomb restoration funded by Lorio Foundation.

TREE FUND

The Association has a "tree fund" for long-term and emergency care for the dozens of oak trees around the Cemetery perimeter. A recent grant from the Peltier Foundation is being used partly to add to the fund. When hurricanes come, they damage the trees severely; the trees then require expensive trimming. In addition, the trees must be mulched periodically as part of ongoing fertilizing and reduction of soil compaction.



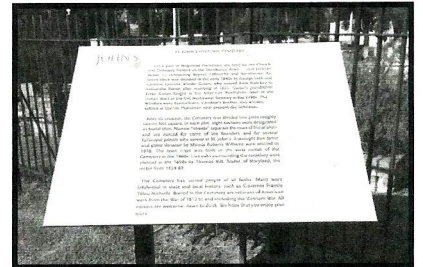
Blanchard Tomb cleaning funded by grants from Lorio Foundation & Levert Foundation.

GRASS!

In south Louisiana, one would think that if grass were edible to humans, we never would starve, even if only the Cemetery was available. More than ample rains so far have been a challenge for the upkeep of the Cemetery. But it is kept up, and visitors who brave the summer heat can wander about with little difficulty.

ENTRANCEWAY PLANNING

The recent improvements to and near the entrance gate prompted our Board to ask the Church Vestry to create a formal entrance walkway to the Cemetery. The feature would be part of the total St. John's "campus plan," the concept for which was approved some years ago. Several sketches have been done, and there should be something available soon to offer to the Vestry. There are some implementation funds available to use for funding matches. Helping with the project are David Cassard, Betsy Magee, Mickey Guillory, Aline Barr, and David Plater.



Near main entrance gate, a history of the cemetery. Made possible by a TaWaSi Grant.

*The Historic St. John's Association, Inc., is a 501(c)(3) organization under the Internal Revenue Code.
All donations are tax deductible to the extent allowed by law.*