

Saria's Song/Lost Woods

Tape Sampler Keyboard [Choir]

Arr. Tactay

♩ = 150

A

Measures 1-5 of the piece. The key signature is one flat (B-flat major/D minor), and the time signature is 4/4. The tempo is marked as ♩ = 150. The section is labeled 'A'. The music begins with a forte (*f*) dynamic. The melody is in the right hand, starting with a quarter rest, followed by a series of eighth and quarter notes. The left hand has whole rests throughout this section.

6

Measures 6-9 of the piece. The melody continues in the right hand with eighth and quarter notes. The left hand remains with whole rests.

10

B

Measures 10-13 of the piece. The section is labeled 'B'. The right hand features a rhythmic pattern of eighth notes and eighth rests. The left hand plays a steady eighth-note accompaniment.

14

Measures 14-17 of the piece. The right hand continues with eighth notes and eighth rests. The left hand accompaniment changes in measures 15-17, featuring a pattern of quarter notes and quarter rests.

18

1.

Measures 18-21 of the piece. The right hand has a melodic line with eighth notes and eighth rests. The left hand features a sustained bass line with a long slur across measures 18-21. The piece concludes with a double bar line in measure 21.

Drum Set

Saria's Song/Lost Woods

Arr. Tactay

$\text{♩} = 150$ **A** **B** Ride Cymbal

8

12 Hi-Hat

15 1.

The drum set notation is written on three systems of staves. The first system (measures 1-8) starts with a key signature change to one sharp (F#) and a repeat sign. The second system (measures 9-12) includes a key signature change to two sharps (F# and C#) and a repeat sign. The third system (measures 13-15) includes a key signature change to one sharp (F#) and a repeat sign. The notation includes various drum symbols such as snare, hi-hat, and ride cymbal, as well as rests and accidentals.

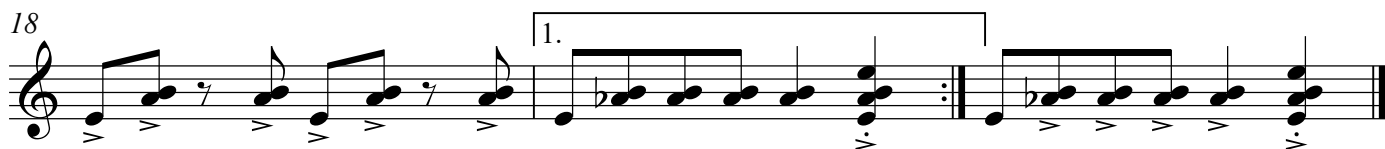
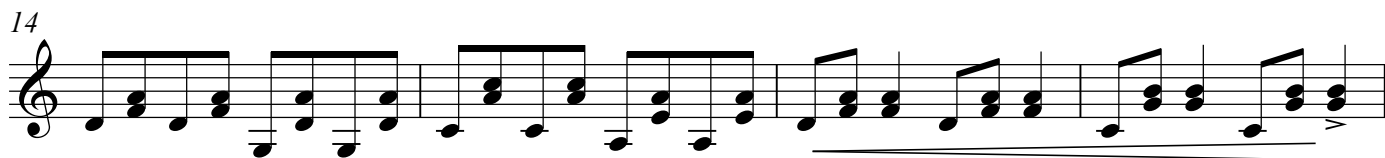
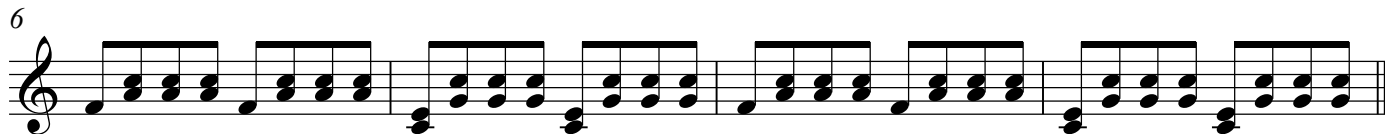
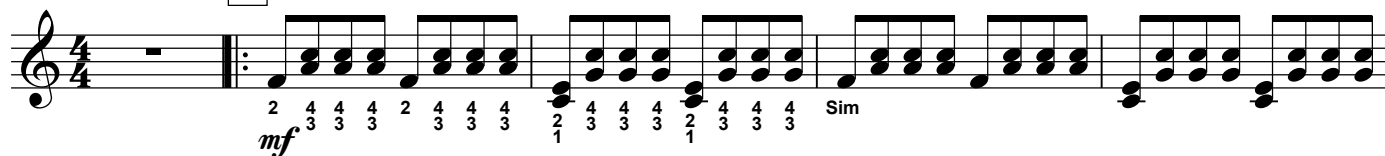
Marimba

Saria's Song/Lost Woods

Arr. Tactay

♩ = 150

A



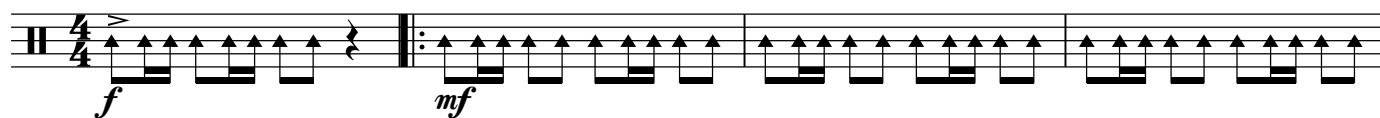
Percussion

Saria's Song/Lost Woods

Arr. Tactay

♩ = 150
Tambourine

A



5

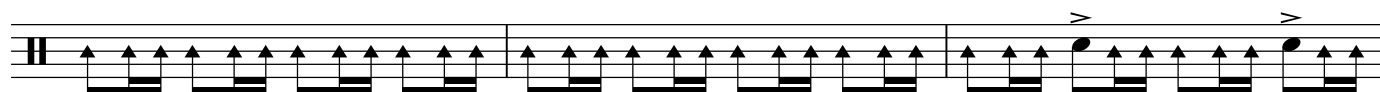


9

B



12



15



18

1.



Percussion

$\bullet = 150$

8

Bass Drum

14

2

Sus. Cymbal

Temple Blocks

1.

Vibraphone

Saria's Song/Lost Woods

Arr. Tactay

$\text{♩} = 150$ **A**

f

6

10 **B**

f

16

1. *mf*

Xylophone

Saria's Song/Lost Woods

Arr. Tactay

$\text{♩} = 150$ **A**

f

6

B 10 *mf* On Bells On Xylo On Bells

16 On Xylo 1.

Electric Bass

$\bullet = 150$ A

[illegible]

10 **B**

Musical notation for exercise 10B, bass clef, 4/4 time. The melody consists of eighth and quarter notes across five measures.

[illegible]