



**S  
A  
M  
P  
L  
E  
B  
A  
L  
L  
O  
T**

A	B	C	
---	---	---	--

**Sample Ballot**  
**Wayne County, North Carolina**  
**November 7, 2017**

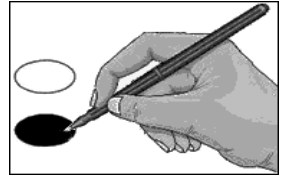


**G001**



**BALLOT MARKING INSTRUCTIONS:**

- A. With the marking device provided or a black ball point pen, completely fill in the oval to the left of each candidate or selection of your choice as shown.
- B. Where authorized, you may write in a candidate by filling in the oval and writing the name on the Write-in line.
- C. If you tear, deface or wrongly mark this ballot, return it to request a replacement.



**BELFAST-PATETOWN SANITARY**

**Board Member**  
 (You may vote for FIVE)

- Dawn Anderson**
- Ben Casey**
- Landis H. Davis**
- C.L. Minchew**
- Fred J. Newcomb**
- Ray Sullivan**
- Write-in
- Write-in
- Write-in
- Write-in
- Write-in

**End of Ballot**

A	B	North Carolina	C	Ballot Style G0001
---	---	----------------	---	--------------------



S  
A  
M  
P  
L  
E  
B  
A  
L  
L  
O  
T

A	B	C
---	---	---

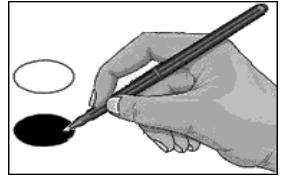
Sample Ballot  
Wayne County, North Carolina  
November 7, 2017

**G002**



**BALLOT MARKING INSTRUCTIONS:**

- A. With the marking device provided or a black ball point pen, completely fill in the oval to the left of each candidate or selection of your choice as shown.
- B. Where authorized, you may write in a candidate by filling in the oval and writing the name on the Write-in line.
- C. If you tear, deface or wrongly mark this ballot, return it to request a replacement.



**BELFAST-PATETOWN SANITARY**

**Board Member**  
(You may vote for FIVE)

- Dawn Anderson
- Ben Casey
- Landis H. Davis
- C.L. Minchew
- Fred J. Newcomb
- Ray Sullivan
- Write-in
- Write-in
- Write-in
- Write-in
- Write-in

**TOWN OF EUREKA**

**Mayor**  
(You may vote for ONE)

- Write-in

**Board of Commissioners**  
(You may vote for TWO)

- Write-in
- Write-in

**End of Ballot**

A	B	North Carolina	C	Ballot Style G0002
---	---	----------------	---	--------------------

S  
A  
M  
P  
L  
E  
B  
A  
L  
L  
O  
T

A		B		C	
---	--	---	--	---	--

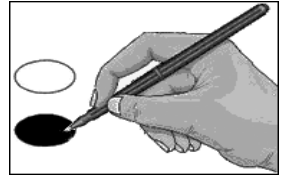
Sample Ballot  
Wayne County, North Carolina  
November 7, 2017

**G003**



**BALLOT MARKING INSTRUCTIONS:**

- A. With the marking device provided or a black ball point pen, completely fill in the oval to the left of each candidate or selection of your choice as shown.
- B. Where authorized, you may write in a candidate by filling in the oval and writing the name on the Write-in line.
- C. If you tear, deface or wrongly mark this ballot, return it to request a replacement.



**FORK TOWNSHIP SANITARY**

**Board Member**  
(You may vote for THREE)

- Henry Braswell
- Tim Gardner
- Danny F. Hope
- Dan E. Seymour
- Write-in
- Write-in
- Write-in

**End of Ballot**

S  
A  
M  
P  
L  
E  
B  
A  
L  
L  
O  
T

Sample Ballot  
Wayne County, North Carolina  
November 7, 2017

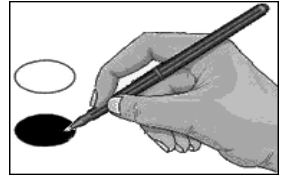


G004



**BALLOT MARKING INSTRUCTIONS:**

- A. With the marking device provided or a black ball point pen, completely fill in the oval to the left of each candidate or selection of your choice as shown.
- B. Where authorized, you may write in a candidate by filling in the oval and writing the name on the Write-in line.
- C. If you tear, deface or wrongly mark this ballot, return it to request a replacement.



**TOWN OF PIKEVILLE**

**Mayor**  
(You may vote for ONE)

**Charles Hooks III**

Write-in

**Board of Commissioners**  
(You may vote for TWO)

**Russell Carpenter**

**Jimmy Gardner**

**Michael E. Herring**

**Eric Snoddy**

Write-in

Write-in

**End of Ballot**

S  
A  
M  
P  
L  
E  
B  
A  
L  
L  
O  
T

A	B	C
---	---	---

Sample Ballot  
Wayne County, North Carolina  
November 7, 2017

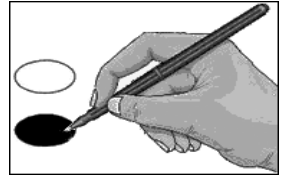


**G005**



**BALLOT MARKING INSTRUCTIONS:**

- A. With the marking device provided or a black ball point pen, completely fill in the oval to the left of each candidate or selection of your choice as shown.
- B. Where authorized, you may write in a candidate by filling in the oval and writing the name on the Write-in line.
- C. If you tear, deface or wrongly mark this ballot, return it to request a replacement.



**EASTERN WAYNE SANITARY**

**Board Member**  
(You may vote for FIVE)

**Daryl Ray Anderson**

**Brandon Gray**

**Anthony L. Smith**

**Ervin Watts**

Write-in

Write-in

Write-in

Write-in

Write-in

**End of Ballot**

S  
A  
M  
P  
L  
E  
B  
A  
L  
L  
O  
T

A		B		C	
---	--	---	--	---	--

Sample Ballot  
Wayne County, North Carolina  
November 7, 2017

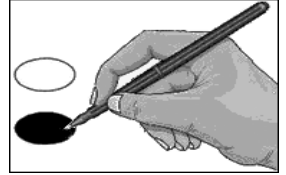


G006



**BALLOT MARKING INSTRUCTIONS:**

- A. With the marking device provided or a black ball point pen, completely fill in the oval to the left of each candidate or selection of your choice as shown.
- B. Where authorized, you may write in a candidate by filling in the oval and writing the name on the Write-in line.
- C. If you tear, deface or wrongly mark this ballot, return it to request a replacement.



**SOUTHERN WAYNE SANITARY**

**Board Member**  
(You may vote for TWO)

**Sally Rawls Bowles**

**Gary Scott**

Write-in

Write-in

**End of Ballot**



**S  
A  
M  
P  
L  
E  
B  
A  
L  
L  
O  
T**

A		B	C	
---	--	---	---	--

**Sample Ballot**  
**Wayne County, North Carolina**  
**November 7, 2017**

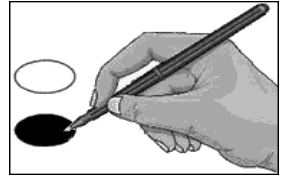


**G007**



**BALLOT MARKING INSTRUCTIONS:**

- A. With the marking device provided or a black ball point pen, completely fill in the oval to the left of each candidate or selection of your choice as shown.
- B. Where authorized, you may write in a candidate by filling in the oval and writing the name on the Write-in line.
- C. If you tear, deface or wrongly mark this ballot, return it to request a replacement.



**VILLAGE OF WALNUT CREEK**

**Village Council**  
 (You may vote for TWO)

**Steven D. (Pete) Benton**

**John Seegars**

Write-in

Write-in

**End of Ballot**

A		B	North Carolina	C	Ballot Style G0007
---	--	---	----------------	---	--------------------



**S  
A  
M  
P  
L  
E  
B  
A  
L  
L  
O  
T**

A		B		C	
---	--	---	--	---	--

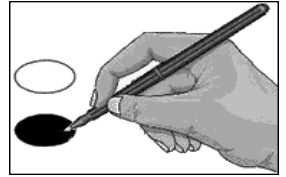
**Sample Ballot**  
**Wayne County, North Carolina**  
**November 7, 2017**

**G008**



**BALLOT MARKING INSTRUCTIONS:**

- A. With the marking device provided or a black ball point pen, completely fill in the oval to the left of each candidate or selection of your choice as shown.
- B. Where authorized, you may write in a candidate by filling in the oval and writing the name on the Write-in line.
- C. If you tear, deface or wrongly mark this ballot, return it to request a replacement.



**EASTERN WAYNE SANITARY**

**Board Member**  
 (You may vote for FIVE)

**Daryl Ray Anderson**

**Brandon Gray**

**Anthony L. Smith**

**Ervin Watts**

Write-in

Write-in

Write-in

Write-in

Write-in

**VILLAGE OF WALNUT CREEK**

**Village Council**  
 (You may vote for TWO)

**Steven D. (Pete) Benton**

**John Seegars**

Write-in

Write-in

**End of Ballot**

A		B	North Carolina	C	Ballot Style G0008
---	--	---	----------------	---	--------------------



**S  
A  
M  
P  
L  
E  
B  
A  
L  
L  
O  
T**

A	B	C
---	---	---

**Sample Ballot**  
**Wayne County, North Carolina**  
**November 7, 2017**



**G009**



**BALLOT MARKING INSTRUCTIONS:**

- A. With the marking device provided or a black ball point pen, completely fill in the oval to the left of each candidate or selection of your choice as shown.
- B. Where authorized, you may write in a candidate by filling in the oval and writing the name on the Write-in line.
- C. If you tear, deface or wrongly mark this ballot, return it to request a replacement.



**SOUTHEASTERN WAYNE SANITARY**



**Board Member**  
 (You may vote for FIVE)

- Charlie M. Holloway**
- Debony T. Jones**
- Bobby Outlaw**
- Rudy Peedin**
- Philip Shivar**
- James A. Taylor**

Write-in

Write-in

Write-in

Write-in

Write-in

**End of Ballot**

**S  
A  
M  
P  
L  
E  
B  
A  
L  
L  
O  
T**

A B C

**Sample Ballot**  
**Wayne County, North Carolina**  
**November 7, 2017**

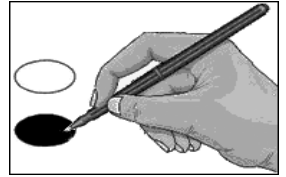


**G010**



**BALLOT MARKING INSTRUCTIONS:**

- A. With the marking device provided or a black ball point pen, completely fill in the oval to the left of each candidate or selection of your choice as shown.
- B. Where authorized, you may write in a candidate by filling in the oval and writing the name on the Write-in line.
- C. If you tear, deface or wrongly mark this ballot, return it to request a replacement.



TOWN OF SEVEN SPRINGS	SOUTHEASTERN WAYNE SANITARY
-----------------------	-----------------------------

--	--

<b>Mayor</b> (You may vote for ONE)	<b>Board Member</b> (You may vote for FIVE)
--	--

<input type="radio"/> <b>Stephen Ray Potter</b> <input type="radio"/> Write-in	<input type="radio"/> <b>Charlie M. Holloway</b> <input type="radio"/> <b>Debony T. Jones</b> <input type="radio"/> <b>Bobby Outlaw</b>
---	---

<b>Board of Commissioners</b> (You may vote for TWO)	<input type="radio"/> <b>Rudy Peedin</b> <input type="radio"/> <b>Philip Shivar</b>
---	--

<input type="radio"/> <b>Ronda Hughes</b> <input type="radio"/> <b>John Lee</b> <input type="radio"/> Write-in <input type="radio"/> Write-in	<input type="radio"/> <b>James A. Taylor</b> <input type="radio"/> Write-in <input type="radio"/> Write-in <input type="radio"/> Write-in <input type="radio"/> Write-in
--	--

<b>Board of Commissioners</b> Unexpired term ending 2019 (You may vote for ONE)	<input type="radio"/> Write-in
---	--------------------------------

	<b>End of Ballot</b>
--	----------------------

--	--

**S  
A  
M  
P  
L  
E  
B  
A  
L  
L  
O  
T**

A		B		C	
---	--	---	--	---	--

**Sample Ballot**  
**Wayne County, North Carolina**  
**November 7, 2017**

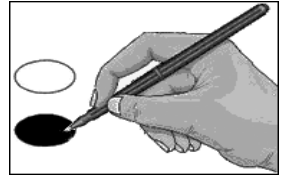


**G011**



**BALLOT MARKING INSTRUCTIONS:**

- A. With the marking device provided or a black ball point pen, completely fill in the oval to the left of each candidate or selection of your choice as shown.
- B. Where authorized, you may write in a candidate by filling in the oval and writing the name on the Write-in line.
- C. If you tear, deface or wrongly mark this ballot, return it to request a replacement.



<b>TOWN OF MOUNT OLIVE</b>				
<b>Mayor</b> (You may vote for ONE)				
<input type="radio"/> <b>Jessie (Jack) Faison</b> <input type="radio"/> <b>James H. Mayo, Jr.</b> <input type="radio"/> <b>Joe Scott</b> <input type="radio"/> _____ <small>Write-in</small>				
<b>Board of Commissioners At-Large</b> (You may vote for ONE)				
<input type="radio"/> <b>Jerry Harper</b> <input type="radio"/> <b>Steve Wiggins</b> <input type="radio"/> _____ <small>Write-in</small>				
<b>Board of Commissioners District 1</b> (You may vote for ONE)				
<input type="radio"/> <b>Vicky Darden</b> <input type="radio"/> <b>Hobert Yates</b> <input type="radio"/> _____ <small>Write-in</small>				
<b>End of Ballot</b>				

A		B	North Carolina	C	Ballot Style G0011
---	--	---	----------------	---	--------------------

S  
A  
M  
P  
L  
E  
B  
A  
L  
L  
O  
T

A	B	C
---	---	---

Sample Ballot  
Wayne County, North Carolina  
November 7, 2017

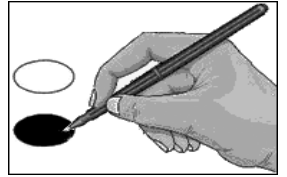


**G012**



**BALLOT MARKING INSTRUCTIONS:**

- A. With the marking device provided or a black ball point pen, completely fill in the oval to the left of each candidate or selection of your choice as shown.
- B. Where authorized, you may write in a candidate by filling in the oval and writing the name on the Write-in line.
- C. If you tear, deface or wrongly mark this ballot, return it to request a replacement.



<b>TOWN OF MOUNT OLIVE</b>		
<b>Mayor</b> (You may vote for ONE)		
<input type="radio"/>	<b>Jessie (Jack) Faison</b>	
<input type="radio"/>	<b>James H. Mayo, Jr.</b>	
<input type="radio"/>	<b>Joe Scott</b>	
<input type="radio"/>	Write-in	
<b>Board of Commissioners At-Large</b> (You may vote for ONE)		
<input type="radio"/>	<b>Jerry Harper</b>	
<input type="radio"/>	<b>Steve Wiggins</b>	
<input type="radio"/>	Write-in	
<b>Board of Commissioners District 2</b> (You may vote for ONE)		
<input type="radio"/>	<b>Harlie Junior Carmichael</b>	
<input type="radio"/>	Write-in	
<b>End of Ballot</b>		

A	B	C
---	---	---

S  
A  
M  
P  
L  
E  
B  
A  
L  
L  
O  
T

A	B	C
---	---	---

Sample Ballot  
Wayne County, North Carolina  
November 7, 2017

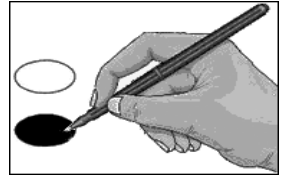


G013



**BALLOT MARKING INSTRUCTIONS:**

- A. With the marking device provided or a black ball point pen, completely fill in the oval to the left of each candidate or selection of your choice as shown.
- B. Where authorized, you may write in a candidate by filling in the oval and writing the name on the Write-in line.
- C. If you tear, deface or wrongly mark this ballot, return it to request a replacement.



**TOWN OF MOUNT OLIVE**

**Mayor**  
(You may vote for ONE)

**Jessie (Jack) Faison**

**James H. Mayo, Jr.**

**Joe Scott**

Write-in

**Board of Commissioners  
At-Large**  
(You may vote for ONE)

**Jerry Harper**

**Steve Wiggins**

Write-in

**Board of Commissioners  
District 3**  
(You may vote for ONE)

**Barbara Kornegay**

Write-in

**End of Ballot**

**S  
A  
M  
P  
L  
E  
B  
A  
L  
L  
O  
T**

A		B		C	
---	--	---	--	---	--

**Sample Ballot**  
**Wayne County, North Carolina**  
**November 7, 2017**

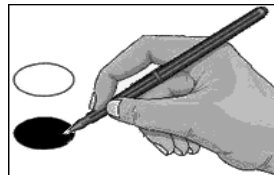


**G014**



**BALLOT MARKING INSTRUCTIONS:**

- A. With the marking device provided or a black ball point pen, completely fill in the oval to the left of each candidate or selection of your choice as shown.
- B. Where authorized, you may write in a candidate by filling in the oval and writing the name on the Write-in line.
- C. If you tear, deface or wrongly mark this ballot, return it to request a replacement.



**TOWN OF MOUNT OLIVE**

**Mayor**  
 (You may vote for ONE)

**Jessie (Jack) Faison**

**James H. Mayo, Jr.**

**Joe Scott**

\_\_\_\_\_  
 Write-in

**Board of Commissioners  
 At-Large**  
 (You may vote for ONE)

**Jerry Harper**

**Steve Wiggins**

\_\_\_\_\_  
 Write-in

**Board of Commissioners  
 District 4**  
 (You may vote for ONE)

**Dennis Draper**

\_\_\_\_\_  
 Write-in

**End of Ballot**

A		B	North Carolina	C	Ballot Style G0014
---	--	---	----------------	---	--------------------