

2016 Corn Individual Trial Report by Soil

Cooperator: Lee Magiera

Trial County: Jasper, Indiana

Trial Name: US35 LCO CG FTN 879550235691743

Report Created: October 24, 2016

Trial Type: Commercial - FTN

Planting Date: April 20, 2016

Harvest Date: September 30, 2016

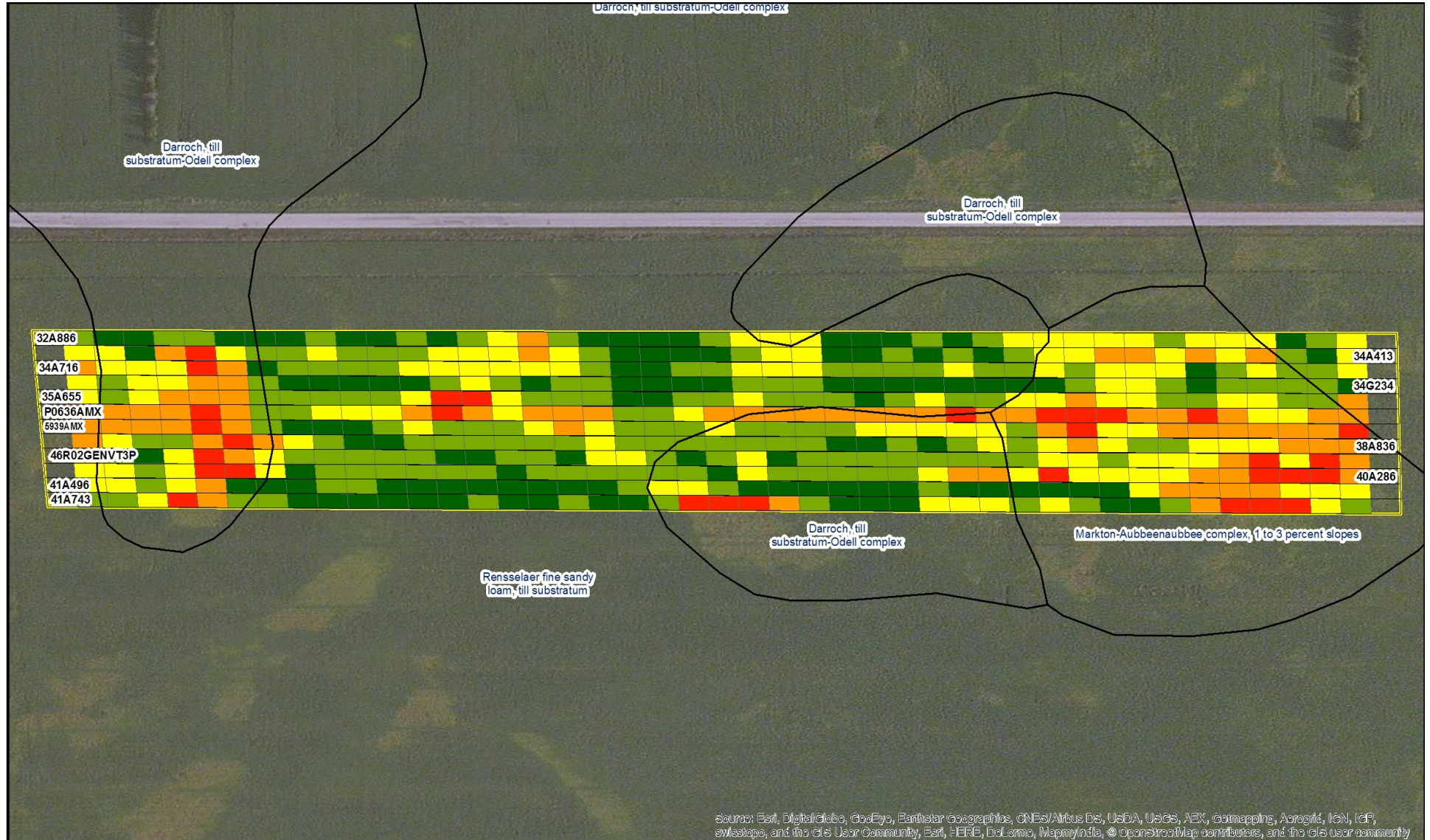
Planting Rate: 32,500 Seeds/Acre

Previous Crop: Soybeans

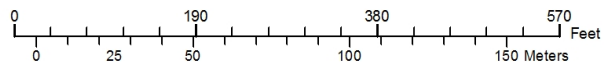
Tillage Type: Conventional

Irrigation: No

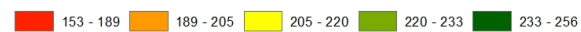
Row Width: --- ---



Source: Esri, DigitalGlobe, GeoEye, Earthstar Geographics, CNES/Airbus DS, USDA, USGS, AEX, Getmapping, Aerogrid, IGN, IGP, swisstopo, and the GIS User Community, Esri, HERE, DeLorme, MapmyIndia, © OpenStreetMap contributors, and the GIS user community



Yield Values - Bushels Per Acre



2016 Corn Individual Trial Report by Soil

Cooperator: Lee Magiera

Trial County: Jasper, Indiana

Trial Name: US35 LCO CG FTN 879550235691743

Report Created: October 24, 2016

Trial Type: Commercial - FTN

Planting Date: April 20, 2016

Harvest Date: September 30, 2016

Planting Rate: 32,500 Seeds/Acre

Previous Crop: Soybeans

Tillage Type: Conventional

Irrigation: No

Row Width: --- ---

Legend

Soils (Columns in descending order by area):

- ¹Rensselaer — Rensselaer fine sandy loam, till substratum
- ²Markton-Aubbeenaubee — Markton-Aubbeenaubee complex, 1 to 3 percent slopes
- ³Darroch, — Darroch, till substratum-Odell complex

PRODUCT DATA						PLOT LEVEL DATA			YIELD BY SOIL		
Plot #	Seed Brand	Product	Type	Traits	RM	Yield Rank	Yield	Moisture	Rensselaer ¹	Markton-Aubbeenaubee ²	Darroch, ³
1	SPECIALTY HYBRIDS	32A886	B	GENSSRIB	102	3	228	17.1	230		
2	SPECIALTY HYBRIDS	34A413	BB	GENSSRIB	103	4	220	17.1	226		
3	SPECIALTY HYBRIDS	34A716	BB	GENSSRIB	104	7	219	16.7	221	221	
4	SPECIALTY HYBRIDS	34G234	BB	GENDGVT2PRIB	104	1	230	18.4	235	227	
5	SPECIALTY HYBRIDS	35A655	BB	GENSSRIB	104	7	219	18.0	222	216	
6	PIONEER	P0636AMX	N/A	AMX	106	12	201	17.7	207	196	198
7	BECK'S	5939AMX	N/A	AMX	109	11	212	19.0	223	198	212
8	SPECIALTY HYBRIDS	38A836	BB	GENSSRIB	108	4	220	18.6	226	211	221
9	SPECIALTY HYBRIDS	46R02GENVT3P	B	GENVT3P	109	4	220	17.6	227	208	222
10	SPECIALTY HYBRIDS	40A286	BB	GENSSRIB	110	10	213	19.9	225	198	215
11	SPECIALTY HYBRIDS	41A496	BB	GENSSRIB	111	2	229	19.9	240	217	228
12	SPECIALTY HYBRIDS	41A743	BB	GENSSRIB	111	7	219	20.7	236	214	208
						Field Avg	219	18.4	227	211	215

Entries with less than 295 feet of row length are not listed for the Yield by Soil results, but are included in the plot averages. All yield values are in bushels(56#)/acre. Yield values are adjusted to 15.0% moisture. Product Type: B = Brand, BB = Brand Blend, V = Variety, N/A = Not Applicable. Green highlight designates the top five yield values per soil type. Report includes top four soils based on acreage.


VALUE ADDED TRAITS:

- SS** = SmartStax® corn
- SSRIB** = SmartStax® RIB Complete® corn blend
- VT2P** = VT Double PRO® corn
- DGVT2P** = DroughtGard® Hybrids with VT Double PRO® corn
- VT2PRIB** = VT Double PRO® RIB Complete® corn blend
- DGVT2PRIB** = DroughtGard® Hybrids with VT Double PRO® RIB Complete® corn blend
- VT3P** = Genuity® VT Triple PRO® corn
- DGVT3P** = DroughtGard® Hybrids with VT Triple PRO® corn
- VT3PRIB** = Genuity® VT Triple PRO® RIB Complete® corn blend
- DGVT3PRIB** = DroughtGard® Hybrids with VT Triple PRO® RIB Complete® corn blend
- RR2** = Roundup Ready® Corn 2

GENERAL:

N/A = Not Available
 α = Brand
 † = Brand Blend
 ‡ = Variety

B = Brand
BB = Brand Blend
V = Variety



Before opening a bag of seed, be sure to read, understand and accept the stewardship requirements, **including applicable refuge requirements for insect resistance management**, for the biotechnology traits expressed in the seed as set forth in the Monsanto Technology/Stewardship Agreement that you sign. By opening and using a bag of seed, you are reaffirming your obligation to comply with the most recent stewardship requirements.



Monsanto Company is a member of Excellence Through Stewardship® (ETS). Monsanto products are commercialized in accordance with ETS Product Launch Stewardship Guidance, and in compliance with Monsanto's Policy for Commercialization of Biotechnology-Derived Plant Products in Commodity Crops. This product has been approved for import into key export markets with functioning regulatory systems. Any crop or material produced from this product can only be exported to, or used, processed or sold in countries where all necessary regulatory approvals have been granted. It is a violation of national and international law to move material containing biotech traits across boundaries into nations where import is not permitted. Growers should talk to their grain handler or product purchaser to confirm their buying position for this product. Excellence Through Stewardship® is a registered trademark of Biotechnology Industry Organization.

B.t. products may not yet be registered in all states. Check with your Monsanto representative for the registration status in your state.

IMPORTANT IRM INFORMATION: RIB Complete® corn blend products do not require the planting of a structured refuge except in the Cotton-Growing Area where corn earworm is a significant pest. See the IRM/Grower Guide for additional information. Always read and follow IRM requirements.

Individual results may vary, and performance may vary from location to location and from year to year. This result may not be an indicator of results you may obtain as local growing, soil and weather conditions may vary. Growers should evaluate data from multiple locations and years whenever possible.

ALWAYS READ AND FOLLOW PESTICIDE LABEL DIRECTIONS. Roundup Ready technology contains genes that confer tolerance to glyphosate, an active ingredient in **Roundup® brand agricultural herbicides**. Agricultural herbicides containing glyphosate will kill crops that are not tolerant to glyphosate. DroughtGard®, Genuity®, Genuity Design®, Processor Preferred and Design®, RIB Complete and Design®, RIB Complete®, Roundup Ready 2 Technology and Design®, Roundup Ready®, Roundup®, SmartStax and Design®, SmartStax®, VT Double PRO®, VT Triple PRO® and YieldGard VT Triple® are trademarks of Monsanto Technology LLC. LibertyLink® and the Water Droplet Design® are registered trademarks of Bayer. Herculex® is a registered trademark of Dow AgroSciences LLC. Respect the Refuge and Corn Design® and Respect the Refuge® are registered trademarks of National Corn Growers Association. All other trademarks are the property of their respective owners.

©2016 Monsanto Company.

Specialty and Design® is a registered trademark of American Seeds, LLC.