

HEIMSTEAD PLAZA

**AVAILABLE FOR LEASE-2230 HEIMSTEAD ROAD
2700 SQUARE FEET**



Call today on this location!

Great Visibility from Clairemont Avenue

Easy Access to Major Hwys

Warehouse Storage with Office Area

Overhead Doors

Competitive Lease Rates & Flexible Terms

Ample Parking Lot



Conveniently located less than two miles from the North Crossing.

This warehouse/office strip center features customer parking at your door.

In the back of most of these spaces there is warehouse storage with overhead doors.

Great for storing inventory, company vehicles, and many other uses!

For More Information, Contact:

DAVID SANDERS

(715) 723-2223 ext. 1



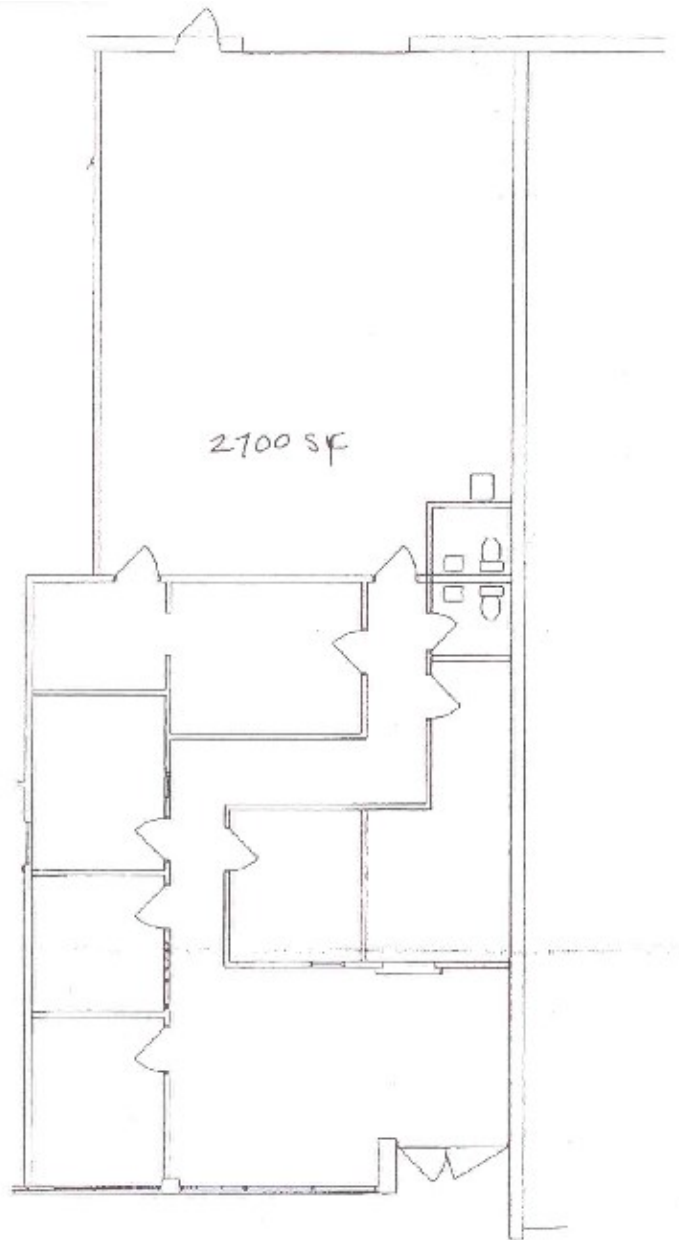
"Your Commercial Real Estate Specialists"

Mid States Development, Inc.

dsanders@midstatesdevelopment.com

2230 Heimstead Road

2,700 Square Feet



Affordable pricing allows you to take advantage of this Excellent location without paying a high price! Spaces can accommodate a variety of needs and uses.

2230 Heimstead Road has both office area and storage with an overhead back door

Call us today to learn more about this and other unique opportunities!

David Sanders at 715-723-2223, ext. 1