



sydenham
NEWSLETTER

OCT/NOV 2024



WHAT'S IN THIS SPOOKY EDITION

CHURCH NEWS	3
WI	4
PLANNING	6
PARISH COUNCIL INSIGHTS	7
OUT AND ABOUT	11
OSR 200 CLUB	11
THE CROWN INN	15
WATERPERRY GARDENS	19
THE INN AT EMMINGTON	22

CONTACT INFORMATION

Editor: Rachel Blake
rachel@curvemarketing.net

Design:
Chiltern Graphics
info@chilterngraphics.com

Advertising Enquiries:
Fiona Kermack
fiona.patrick1@btinternet.com

Some images in this brochure are from Freepik.

hello AND WELCOME

“

Your Village NEEDS YOU

While the world of orange, falling leaves and the promise of open fires is here. And with it is the latest news from across the village. There is also a call from the Parish Council for volunteers.

These are much needed to establish a Community Speedwatch team. Despite the 20mph zone in the village, the Parish Council is aware that there are still too many motorists speeding.

WANTED

JUNIOR REPORTERS

Sydenham Newsletter is looking to have an on-going feature by a Junior Reporter. Ideally we would like a different young person each edition to write about something they are interested in. It could be...

Something that has happened to them
Somewhere they have been
Something they have done
Anything that inspires them!





Becoming a volunteer for the programme means that you can do something practical about this issue. The more people that get involved, the more we can do as a community to make a difference for just a little bit of time. Find out more in the Parish Council's review of everything they are involved in. Including an upcoming road closure at the end of October.

This edition includes some wonderful pictures of the Northern Lights, a lovely account of Ride and Stride alongside the Harvest Festival. Topped off with an update on the incredible endeavours of Kevin Luff who is training to row the Atlantic in 2025.

Nicolas Oakley's increasingly popular feature – Sydenham Silhouettes – involves him sitting down with Mike May – the Chair of the Parish Council. Mike shares his past which led to him moving to Sydenham in 2001.

The next edition will hopefully be ready for December, which is always a special time in the village. Please do share any contributions as they happen as I am always compiling the content, or at the very latest by the 15th November to rachel@curvemarketing.net.

Thank you

Rachel 



**HAVE YOU CAPTURED A GREAT IMAGE RECENTLY?
WOULD YOU LIKE IT TO APPEAR ON OUR COVER?**

Email Rachel with an image you feel captures Sydenham village life and it could be the next front cover!*

*Please do ask permission if it includes residents.



church NEWS

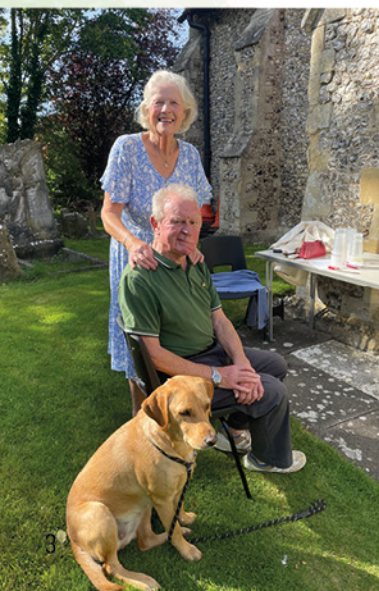


SEPTEMBER Sat 28th Sept - 10am - 12noon Work Party St Andrew Church
Sat 28th Sept - 10am - 1pm Repair Café St Andrew Church

OCTOBER Sun 13th Oct - 10:30am BCP Holy Communion St Mary's Sydenham
Sun 27th Oct - 4pm Service to Commemorate the Departed
St Andrew's Church

NOVEMBER Sat 2nd Nov - 10am - 1pm Repair Café St Andrew's Church
Sun 10th Nov - 10:30am BCP Holy Communion St Mary's Sydenham
Sat 16th Nov - 7:30pm Friends of St Andrew's Church Quiz Nite Village Hall
Sat 23rd Nov - 10am- 12noon Christmas Market St Andrew's Church
Sat 30th Nov - 7pm Sydenham Concert Sydenham Church

DECEMBER 30 Nov – 8 Dec - 2pm-5pm Christmas Tree Festival St Andrew's Church
Sat 7th Dec - 12pm-2pm The Christmas Fayre in the OSR. Hot soup and crusty bread plus lots of present ideas, children's games and wonderful prizes to be won. Look out for announcements on Sydenham Mail or contact Fi Kermack on 01844 352990 for further info.
Sun 15th Dec - 4pm Our annual heartwarming Carol Service.
Tues 24th Dec - 4pm Not to be missed family Crib Service and for a more reflective time, the midnight mass service will be held at 10pm.



RIDE+STRIDES for Churches

The 14th September dawned bright and sunny – just perfect for the annual Ride and Stride. A wonderful way to enjoy getting out and about on foot or bike (and in the past some from the village have even done it on horseback), as well as raising much-needed funds for the Church. Participating churches have a team of 'welcomers' who greet weary visitors with much needed refreshments, while also logging those that have visited them. As always St. Mary's took part with a number of people enjoying the sunshine to say hello to those visiting, including Roy and Adele shown here outside the church. Find out more at: www.ridestride.org

sydenham WOMENS INSTITUTE

WATERPERRY GARDENS GUIDED TOUR

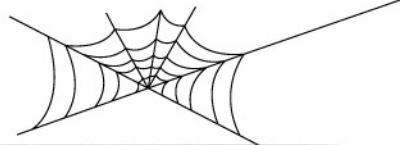
On 6th September as part of our extra-curricular activities 16 of our members went to Waterperry Gardens for a guided tour and history of the house and gardens.

Luckily the weather was perfect and we didn't need our raincoats! Our affable tour guide Robert first led us to the amphitheatre and gave us a potted history of the house and gardens. Robert has worked at Waterperry since the 1970s and his knowledge is extensive.

The house itself is a 17th century mansion originally occupied by the Curzon family. The house and grounds were subsequently bought by the horticulturist Beatrix Havergal who founded the Waterperry School of Horticulture. Practical gardening courses are still available at Waterperry.

After our talk, we entered the gardens and had a complete tour of the beautiful gardens and grounds with Robert. Our visit ended with a trip to the café for tea and cake, which was lovely despite the attentions of several wasps who also fancied some cake!

Fi





REPAIR CAFÉ

OXFORDSHIRE

LOCATION: **St Andrew's Church**

Chinnor, Oxfordshire, OX39 4PG

WHEN: **Saturday 28th September 2024**

10:00 am – 1:00 pm

Last item accepted at 12:30 pm

MORE INFORMATION: Do you have small electrical, mechanical, household items, textiles and toys that need fixing? Bring it along and one of our volunteer fixers will try to fix it for you. 1 item per person please.

Repairs are free but please give a cash donation to cover costs. Any extra will go towards the care and maintenance of St Andrew's Church

Refreshments available

CONTACT: If you have any questions or would like to volunteer, contact Linda at greeningchinnor@gmail.com or call 07973 788339

More information can be found on our website and Facebook page





Waterperry
Gardens



September & October 2024 at Waterperry Gardens

Visit our gardens to see our famous herbaceous border in all its late summer glory as it bursts back into life with a beautiful display of Michaelmas Daisies (Asters). This is also the time of year to start thinking about bulb planting for that glorious show of colour we all look forward to in the spring. Start your planting season in style, with an extensive variety of plants, seeds and bulbs available at Waterperry Gardens.

SuperNature – Sculpture Exhibition by Jenny Pickford: 6th September – 20th October 2024.

Waterperry Gardens provides the ideal backdrop for a solo show, and this Autumn Jenny Pickford will be showing a selection of her sculptures throughout the gardens. Jenny Pickford is a contemporary artist blacksmith designing and making unique sculptures, water features and architectural ironwork from her forge in rural Herefordshire.

The gardens are open in aid of the National Garden Scheme: Tues 17th September 2024.

Apple Weekend: Sat 12th & Sun 13th October 2024. As the season moves into autumn, apples are at the forefront of our Orchard Manager's mind. Join us for a great family day out, where you will be able to sample and buy many of our different types of juices, buy goodies at the craft and food fair, take a tour of the orchards & fruit sheds, including a behind-the-scenes visit to see our apple press in action.

Halloween Hunt in the Gardens: Sat, 26th October – Sun, 3rd November 2024. Complete the Halloween hunt in the ornamental gardens. £3.95 per child with a prize. Children must be accompanied by an adult for whom the garden entrance fee applies.

For more information please visit www.waterperrygardens.co.uk

planning IN SYDENHAM

P24/S0911/FUL

Land Adjoining Park House Park View Sydenham Oxon OX39 4LQ.

Erection of a detached dwelling with parking and amenity space (additional photographs received 18th April 2024 and amended documents received 28 May 2024).

SODC Planning Committee decision - **permission refused.**

P24/S1774/LB

Brook Cottage, Brookstones, Sydenham OX39 4LY.

Replacement of timber framed windows.

SODC decision - **permission granted.**

parish COUNCIL INSIGHTS



REMINDER OF OCTOBER ROAD CLOSURE

The Parish Council would like to remind everyone that Sydenham Road will be closed between Box Tree House and Slade Farm between 21st October and 1st November for flood prevention works.

This is a full, 24-hour closure (including weekends). This is because the chosen contractors will be digging three trenches across the road between the two ditches. Since the last newsletter, work has continued behind the scenes getting quotes from and appointing contractors and liaising with OCC over all the details. We would like to thank villagers for their patience while this work is being carried out. Hopefully it will mean a significant improvement to the problems we saw last winter.

SEWELL'S LANE UPGRADE

Eagle-eyed villagers may have noticed improvements to Sewell's Lane over the last few weeks. The path had become overgrown but has been cleared thanks to the hard work of Paul Grafham. This should make it much easier for walkers, horse riders and cyclists to enjoy.

Thank you, Paul!



SPEEDING SIGNAGE

Since the last newsletter, the Parish Council has continued to liaise with the Traffic Safety officer at OCC to implement the speeding measures outlined in the last newsletter.

Since then, we have:

- Identified locations within the village for new 20mph roundels on the road. Happily, our contact at OCC has managed to negotiate some additional speed signage for Sydenham within this year's budget.
- Organised for the replacement of the play park/children playing sign outside Walnut Barn, which is faded.
- Organised for OCC to re-paint the white lines at the junction by the Inn at Emmington.
- Agreed to seek quotes for upgrading the bollards on Sydenham Road just down from the play park - it was agreed to paint these white and to refurbish the reflective strips.
- We are getting quotes for village gates which are rotten and/or in poor repair.
- We have agreed on the type of replacement VAS signs for the Emmington End of the village (to reflect the 20mph limit) and these are being ordered.



VAS SIGNS ON CHINNOR/THAME ROAD

Annoyingly, during our annual insurance inspection of the VAS signs on the main road, we found that our VAS sign to the left of the Inn at Emmington has been tampered with and the internal workings have been stolen.

We understand from Thames Valley Police that there has been a spate of thefts from VAS signs locally (a police officer actually stopped our engineer when he was working there). An incident number has been logged with Thames Valley Police and our insurance company and we are working on getting these replaced.

NEIGHBOURHOOD PLAN

The neighbourhood plan committee will be reconvening this month. The plan now needs updating to keep it in line with government and local policies and to ensure that the village is protected from speculative planning applications.





COMMUNITY SPEEDWATCH (CSW)



Importantly, we have now registered with the Thames Valley Community Speedwatch programme, which entitles us to display speedwatch signage at either end of the village as a visual deterrent.

As part of the process, we have had to identify several locations in the village for people to stand with the speed gun to monitor traffic speeds. These are being logged with CSW.

We really need your support to make this a success - see below for how to sign up!

Your village needs you!

Could you spare a couple of hours a month as a volunteer for our new Community Speedwatch team?

Sydenham has registered for Thames Valley Police's Community Speedwatch programme, which has been created to deter motorists from speeding in our neighbourhoods. This also entitles us to CSW signage (with speed camera images) at either end of the village.

Despite the 20mph zone in the village, the Parish Council is aware that there are still too many motorists speeding. Becoming a volunteer for the programme means that you can do something practical about this issue.

You will undergo several short training sessions online, including recognising vehicle makes, and how to ensure safety at the roadside. The data collected at Speedwatch sessions is logged online for Thames Valley Police to process.

People who are caught speeding are sent a letter from Thames Valley Police and, if they are caught more than three times, they will get a visit from the police. 94.45% of those receiving a letter from the CSW scheme do not go on to offend again.

We really would like to encourage villagers to get behind this, to help keep our roads safe.

If you are interested in volunteering, please get in touch with the Parish Clerk at parishcouncil@sydenhamvillage.co.uk



parish COUNCIL INSIGHTS *cont.*



PLAY PARK

Good news! The play park has passed its ROSPA inspection with flying colours.

Many thanks to Dave Wilkins for his hard work masterminding the project and for all his hard work mowing, repairing and making this space such a wonderful asset for the village.

Thanks also to Paul Grafham for his help.



DEFIBRILLATOR ELECTRICITY SUPPLY

We have been made aware of a significant uplift to the cost of electricity to the village defibrillator when our current contract ends in September, due to incoming metering changes by the Energy Regulator. We have agreed that this is not acceptable, and we are looking at other options.

EMERGENCY PLAN

We are finalising our village emergency plan ahead of winter in case of incidents such as major storms. Once it is drafted, details of the community emergency team will be published on village noticeboards.



VILLAGE REPAIRS AND MAINTENANCE

A road sweeper has been through the village following the weeds being loosened from the roadside edges. We also arranged for the District 'Deep Cleanse' team to visit and attend to the pavements.

NEW DOG BIN

The new dog bin has now been installed at the Emmington End of the village for use by all dog walkers.

out AND ABOUT



NORTHERN LIGHTS

What a sight to behold, when we were lucky enough to have the Northern Lights in all their glory over the village in May. Richard Wallis captured them from their home looking over The Green and down Brookstones. The light you can see is in the OSR porch and you might just be able to make out the telephone box illuminated on the left. Funnily enough Richard has been a couple of times to the Arctic Circle and not seen the Northern Lights when there, so amazing to be able to capture them so brilliantly over Sydenham.

Richard Wallis



OSR 200 CLUB

THANK YOU TO ALL THAT ARE PART OF THIS IMPORTANT FUNDRAISER FOR THE OLD SCHOOL ROOM. HERE ARE THE LATEST WINNERS:

AUGUST: CARL HEMP, THOMAS PAYNE, MARGARET CLARK, SUE ARCHER, ADELE STANCLIFFE, JOHN WILSON, ANNE OAKLEY AND TONY RUDSON

SEPTEMBER: NICK OAKLEY, ROSEMARY CARTER, JOHN PARRY, CECILY CHURCH, SHELDON, HARRY ASHFIELD SMITH, ELEANOR CHURCH AND MARK KING

Roy Harrison

CORO SPEZZATO

CHORAL CONCERT

FEATURING RENOWNED OPERATIC TENOR *ADRIAN THOMPSON*

COMPÈRED BY *FIONA BRUCE*



SATURDAY 30TH NOVEMBER
ST MARYS CHURCH,
SYDENHAM, OX39 4LY
7:30PM



TICKETS £20
ALL TICKETS IN ADVANCE.
PLEASE CONTACT NICK
POTTS ON **07469201839**

out AND ABOUT cont.



CATCH UP OVER A COFFEE

Don't forget the monthly village coffee morning happens regularly on the 2nd Tuesday of the month from 10 - 12 noon. It is a relaxed place to meet and catch up on news as well as meet new folk. Feel free to pop along to the next one.

THANK YOU

This is a huge thank you to all of you who so generously provided sumptuous platefuls of sandwiches, cakes, biscuits and more for the tea after Paul's funeral. I am so grateful and I send an enormous thank you to you all.

Adele Stancliffe

THE ATLANTIC ROW

Kevin Luff and his team are building up their training, with the 'Get Busy Rowing' crew having their first overnight outing in the new boat 'Pamela' in August, rowing along the Thames. While September has seen them spending another week on the boat, but this time at Burnham on Crouch.

The team are aiming to complete the World's Toughest Row in 2025 alongside a number of other teams from across the world. It involves rowing across 3,000 miles of ocean from La Gomera to Antigua.

Follow them at
<https://www.facebook.com/get.busy.rowing>

Sara Luff

(Image thanks to Penny Bird and Camera)



SYDENHAM SILHOUETTES - MICHAEL MAY

What motivates a man to venture into the realm of local politics? Well, in the case of Michael May, apparently not a burning political ambition but perhaps a case of flooding in his back yard - more of that later! When asked if he prefers to be called Michael or Mike, he replies with equanimity “either”, perhaps already revealing his balanced and pragmatic approach to life. He then adds “but not Mick”; so his tolerance level does have a limit!

Mike grew up wanting to be a pilot like his father who flew during the war and subsequently became an airline pilot; he described flying at that time as “hours of boredom interspersed with moments of terror”. Despite the fact that Mike was extremely fit and a more than competent sportsman, having gained a sports scholarship to Millfield and having been selected for the England final trials in hockey, to his massive disappointment he failed the medical for pilot training due to colour blindness.

Mike graduated from Manchester University in 1978 with a degree in Civil Engineering but described the course as being “too academic”. He then had to gain a number of years’ practical experience in order to become a Chartered Civil Engineer and started his working life with Bechtel, the US construction giant. His subsequent career took him regularly to the Middle East working with a petro-chemical company and, after moving to an Exeter based consulting firm, he was posted by them to work on a project in Mauritius. Together with his wife, Annie, (whom he had married a year after graduating) and their 18 month old daughter, Natasha, he moved into a house on the beach and they lived what sounded like an idyllic life in Mauritius for two years, not far removed from Paradise!

Annie had to come back to earth to give birth to their son, Stuart, and Mike spent the next 10 years working with PA on consultancy projects throughout the UK. In search of a more exciting professional challenge he subsequently joined a transport consultancy to work on a transport strategy for Mecca; this included modelling how to move a million people during the Hajj without actually being allowed access to Mecca itself!

Still apparently looking for more adventure Mike worked with a US based company on a railway project in Mexico which included conceiving a Crossrail project for Mexico City and designing a 1300km railway through the Yucatan (a pet project of the then President of Mexico!) During a period of 10 plus years he made fifty or more trips to Mexico spending 2-3 weeks there at a time while Annie kept the home fires burning working in a law firm and looking after the family.

Continued overleaf

out **AND ABOUT** cont.

In 2001 Mike suffered a serious skiing accident in which he broke his scapula and it was about this time that he and Annie discovered Sydenham. Although these two events were not related perhaps one compensated the other! To quote Mike “Who would want to live anywhere else?”

The move to Sydenham gave Mike a new purpose in life, particularly when he discovered that the house he had bought under the impression that it had no history of flooding had in fact been flooded the previous year. Initial attempts to address the situation through ‘normal channels’ met with closed ranks prevarication so Mike, being a man who likes to get things done, launched a major offensive with the help of two stalwarts of the Parish Council (Paul Stancliffe and Roy Harrison) starting with the CEO of Thames Water. Some 7 years and £3m later a new sewer and flood defence system were in place. It was then the turn of Southern Electric to face the May music and after a number of years’ perseverance, an underground cable was laid and the habitual power cuts were short circuited!

When Paul and Roy stepped down who better to bring on to the PC than Mike May who has since championed many causes for the improvement of our village and as Chairman continues to do so.

The rest is history!

Nicolas Oakley



the **CROWN INN**

Exciting times at The Crown, as there will be a new menu starting from the beginning of October. For those guests looking to make festive bookings, the pub will be open on Christmas Day for lunch and the festive menu leading up to the big day, will also be available from the beginning of October.



Let's GET SPOOKY

BOO! Just a little heads up. No doubt there will be some spooky going-ons through the village on the 31st October. This is generally a mix of children from the village of various ages, who love the excuse to dress up and have some fun with torches in the dark.

If you are happy for these merry bands of ghosts, witches, skeletons and who knows what else, to trick and treat at your home, then please put a pumpkin or lights outside your house to let them know they are welcome.



Santa's SLEIGH

Potentially a little too early and appreciate that we are just not ready to be thinking about Christmas. However, Santa has been in contact (as he is always so busy in December) to let us know that he is planning to take his Santa's Sleigh through the village on Thursday 19th December from 5p.m.



DON'T MISS OUT

out AND ABOUT cont.

BE AWARE

We are constantly being bombarded with scam emails and so thought it would be good to just put in a little reminder about how to be more aware. These typically include efforts for hacking, phishing and bogus requests for help. Sadly, these activities are on the rise and becoming increasingly sophisticated.



Here are some things to look out for:

- An unexpected email, with an unexpected or surprising request
- The greeting is either too generic or unexpectedly familiar
- Emotive language in the subject line e.g. urgent, security alert, your account is at risk etc
- The email domain name just doesn't look right or is overly complicated
- Grammer and spelling mistakes
- Requests for sensitive information that can identify you e.g. full name, date of birth, address, bank details etc Suspicious links to attachments

Please never click on links that end with things like .EXE or .ZIP or .RAR or TAR.G2 (these could introduce a virus into your system).

Instead, you can forward suspicious emails to report@phishing.gov.uk and the National Cyber Security Centre (NCSC) will investigate it or forward suspicious text messages to 7726.



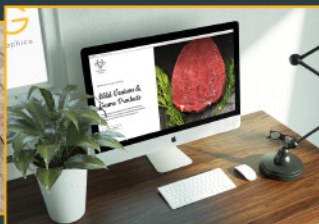


chilterngraphics

info@chilterngraphics.com

+44 (0)7818 404 100

www.chilterngraphics.com



A LOCAL GRAPHIC DESIGN AND BRANDING COMPANY IN THE HEART OF THE CHILTERN.

- ARTWORKING
- DESIGN FOR PRINT
- INFOGRAPHICS
- DIGITAL DESIGN
- SOCIAL MEDIA
- BRANDING
- LOGO DESIGN
- BROCHURE DESIGN
- MAGAZINE DESIGN
- MARKETING/EVENT MATERIALS
- FLYERS
- POSTERS
- ADVERTS
- PRINT MANAGEMENT
- PUB/CAFE/RESTAURANT GRAPHICS

VILLAGE ENVIRONMENTAL SERVICES

DOMESTIC DRAIN SERVICES

Proprietor: Dennis Cook
Est. 1979

BLOCKED DRAINS?

FAMILY RUN BUSINESS SINCE 1979
 BLOCKED DRAINS CLEARED
 REASONABLE RATES
 CCTV DRAIN SURVEYS
 NO EXTRA CHARGE FOR EVENING, WEEKEND OR BANK HOLIDAY CALLOUTS
 FULL PUBLIC LIABILITY INSURANCE

CALL US DAY OR NIGHT



07850 635 844 01296 624 221 (MESSAGES)



Waterperry GARDENS



Waterperry
Gardens

Open every day from 10am to 5.30pm
(November-March 10am to 5pm).

Seven miles from the heart of historic Oxford lies Waterperry Gardens – 8 acres of beautiful ornamental gardens with a fascinating history. Established as a School of Horticulture for Ladies by Beatrix Havergal in 1932, it is now home to a quality plant centre housed in the Victorian walled garden, garden shop, art gallery, gift barn, museum and teashop.

The breath-taking gardens feature a 200-foot-long herbaceous border, formal knot and rose garden, colour and contemporary borders, a water-lily canal, riverside walk and herbaceous nursery stock beds that supply plants for the gardens.

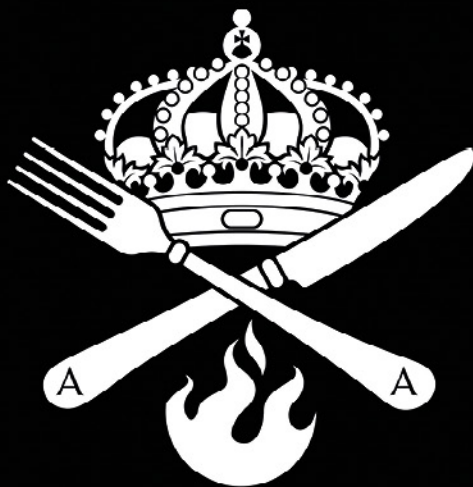
The plant centre, housed within the ancient walled garden offers plant connoisseurs and budding amateurs alike the chance to buy unusual varieties of shrubs and herbaceous plants whilst our friendly and knowledgeable staff are always available to provide advice, information and inspiration. There's also a wide range of bedding, herbs and vegetable plants in season and the garden shop has a great range of garden sundries, tools, bulbs and seeds.

The five acres of historic orchards at Waterperry Gardens grow fifty different varieties of apple, many heritages, from which our delicious apple juices and ciders are produced and sold in both the garden shop and the teashop. Our apples are harvested by hand and juiced on-site using time-honoured methods.

The Gallery, featuring works from British Artists, the Gift Barn and the Old Potting Shed offer beautiful, affordable and unusual gifts with the emphasis always on quality. There is also a small Rural Life Museum, a Saxon Church and a lovely teashop specialising in home-baked lunches, patisserie and cakes – all cooked fresh on the premises each day using the best local, seasonal produce.

You will find a full programme of year-round events at Waterperry Gardens, from horticulturally themed weekends to theatre, opera and concert productions held in a stunning out-door Amphitheatre, and of course always something fun for the children to do in the holidays.

Visit www.waterperrygardens.co.uk for more information.



THE CHEF AT THE CROWN INN
SYDENHAM

CLASSIC MENU

SERVED TUESDAY - SATURDAY

12:00 - 15:00 / 17:00 - 21:00

SUNDAY MENU SERVED 12:00-19:00

BOOK A TABLE BY VISITING

crownsydenham.co.uk

OR CALL 01844 885175



Capture your pet's spirit in a timeless, hand-drawn portrait. Each piece is a custom work of art, capturing the unique personality of your best friend.



The perfect gift for an animal lover or pet owner, ideal for birthdays, Christmas, or as a memorial gift.

Currently available in A5, A4, and A3, but please get in contact with specific size requests.



Follow me on Instagram for more examples of my work, and to make a booking send an email or a message on Instagram
amrj.artist@gmail.com

@amrj_art



The INN AT EMMINGTON



Blink and you missed it, but that's Summer over for another year... the kids are back at school, mince pies are in the shops and our older folk are worried how they are going to heat themselves over the Winter!

As we go to press, and following last month's update, there is still no news on the sale of The Inn so it's business as normal as we race headlong into the Autumn and Winter period.

First up, is our Halloween party on Friday 1st November with popular local band Rockpool back at The Inn for the third time. Nicks's band played a storming set the last 2 times they were at The Inn so why not come down to see this great local rock band. Halloween fancy dress optional but it would be lovely to see a few spooky costumes! Music starts between 8 and 9pm.

The next date for your diary is Saturday 23rd November when we will be hosting a quiz night at The Inn with our resident lockdown quiz mistress Cheryl in charge of proceedings. More details to follow in due course but do start getting your teams together now and hold the date.

Although we won't go into Christmas details in this edition of the newsletter, please put Friday 20th December in your diaries for our traditional end of work party. This year, Chinnor group 'Cheeky Half' will be performing at The Inn in which is always one of the biggest nights of the year. Let's get ready to party!

As well as these events, we will, as normal, be offering food every evening, Happy Hour every day between 3 and 5pm and restarting our traditional Sunday Roasts in September as we always take a break from them in the Summer!

So if you haven't been in for a while or just want to come along to our quiz night or hear some live music, don't be shy, give us a call or simply pop in bring on The Autumn!!

Thanks as always for all your support.

All the team at The Inn x

