

Three Great Ones by **CAYO**

Exclusive Features on the Cayo Camper

- Cab-to-camper see-through window, clear safety Plexiglas™
- Set of 3 lifting jacks with stands
- Choice of 2 floor plans
- 7-wire truck-camper connector plug
- Gas heater, thermostatically controlled, 15,000 BTU with fan

Cayo Camper Options

- Slider see-through window
- Cab-to-camper intercom (installed in camper — not truck)
- Cab-to-camper intercom (installed in truck)
- Truck wiring for lights and battery charging
- Hold down brackets installed on truck

Exclusive Features on the Motovalor

- Dup battery charging system — battery charger in converter and charging connection to alternator which disconnects the chassis battery from the RV battery when the ignition key is turned off
- Gas heater, thermostatically controlled sealed combustion, 22,000 BTU ducted forced air
- Spare wheel and tire
- Concealed tire carrier compartment
- Seat belts for all six designated passenger seats
- Snap-on drapes for windshield and cab door windows
- Bunk ladder

Motovalor Options

- 110-volt exterior receptacle
- Divider curtain between driver compartment and living area
- 2500 Watt 110 volt generator
- Thermo-San Holding Tank Waste Disposal System
- Light duty trailer hitch — for 150 lbs. or less hitch weight
- Heavy duty trailer hitch — up to 750 lbs. complete with equalizer bars and A-frame brackets
- Auxiliary gas tank with switch-over valve

Optional Features on Both the Cayo Camper and Motovalor

- Gas light
- Stereo tape player with F.M. stereo radio
- Weatherproof storm windows
- 12-volt fan in roof vents
- Directional TV antenna, UHF & VHF
- Roof-mounted air conditioner, 10,000 BTU
- Water purifier
- Fold down bunk
- Roof rack & ladder
- Carpeting
- Fire extinguisher
- Escape hatch roof vent above cab-over bed
- Monomatic toilet model W (in place of standard)
- Divider curtain for cab-over bed

DIMENSIONS

	Motovalor	Cayo Camper
Overall length	20'	14'-10"
Overall width	7'-10"	7'-10"
Overall height	9'-1"	9'-1"
Overall height with air conditioning	9'-10"	9'-10"
Interior height	6'-6"	6'-6"
Interior length plus 52" cab-over	12'-5"	11'-6"
Interior width	7'-7"	7'-7"

CAYO LIFETIME WARRANTY to the Original Owner

The Cayo RV Corporation will repair or replace defective parts or workmanship at no charge for parts. This does not include appliances or equipment which carry their own warranties, nor does it apply to the vehicle. The vehicle is covered by the manufacturer's warranty. See your Dealer for full warranty details.

Chassis can be replaced. Motovalor's design and construction permits factory replacement of the chassis should the need arise due to collision damage or wear — another advantage of owning a Motovalor.

Dinette Camper



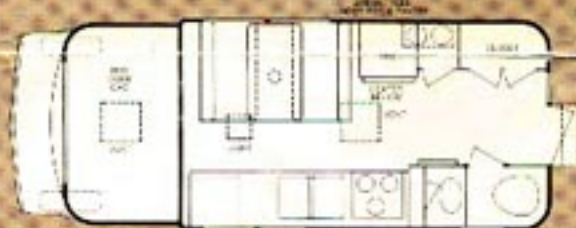
DRY WEIGHT, STANDARD EQUIP. — 2240 lbs.

Gaucha Camper



DRY WEIGHT, STANDARD EQUIP. — 2240 lbs.

Motovalor



DRY WEIGHT, STANDARD EQUIP. — 2245 lbs.

Motovalor Truck Chassis Features

	DODGE	CHEVY	FORD
• Automatic transmission	X	X	X
• Power steering	X	X	X
• Power brakes	X	X	X
• V8 engine, cu. in.	360	350	302
• Tires*, 8.75-16.5 plys	10	10	12
• Chrome grill & bumper	X	X	X
• Padded dash	X	X	X
• Heavy duty springs, shocks, alternator, battery, etc.	X	X	X
• Side and rear view mirrors	X	X	X
• Tinted windshield	X	X	X
*10.5-16.5, 6 ply on dual-wheel Chevrolet and Dodge chassis			
OPTIONAL EQUIPMENT			
• Air conditioning	X	X	X
• Radio	X	X	X
• Cruise control	X		
• Comfortall steering wheel		X	

CONSULT YOUR DEALER FOR DETAILS ON THE CAYO LINE!



RV Corporation

1550 East Empire, Benton Harbor, Michigan 49022

Phone: 616-326-7341

Cayo RV Corporation maintains a continuous product improvement program and reserves the right to change specifications and prices without notice.

moves you into a new life. Pleasantly.



Room fore and aft!

Up front—double bed over cab. Drapes can be added for privacy. Kitchen area has 5 cu. ft. gas/electric refrigerator, gas range with oven, double stainless steel sink, many cabinets. Toward rear — full-length pantry, king-size closet, bath with shower, lavatory, toilet, medicine cabinet, enclosed hot water heater, water storage tank. Outside, hidden, easy-to-reach — two 20-lb. butane gas bottles. Omnipower electrical system, Dual waste-holding tank system. Concealed spare tire carrier.



Motovator gives you a

As a totally self-contained unit, the Motovator will truly become your second home. Its all-aluminum frame and body are superbly constructed for long life. The anodized aluminum exterior eliminates wear, washes easily and always retains its aerodynamic appearance. Take it to the backwoods, beach, restaurant, shopping center or church. The Motovator can be equipped with a frame-mounted hitch to tow a boat, snowmobile

trailer or dune for summer fun and an FM stereo for people and automatically turn and liberate a

Built for travel
Remove the tire and you have

...the camper built by campers for campers



Airline Bath for traveling people. It has a shower, lavatory, marine toilet, hot and cold water and big medicine cabinet.

A Closet with room! It's full-length and wide. There's plenty of space for clothing for a trip or a vacation. It's also convenient.



Cabinets galore! Overhead, under the counters. There's storage space under the dinette seats.



The Cayo Camper is designed and built by campers, with features campers have always wanted. Livable, usable room. Large refrigerator. Carpeting, fabrics and finishes selected for appearance and maintenance ease. Better balance, better roadability. Hunters, fishermen, families on the go, will recognize Cayo Camper advantages.