

Cancellation Policy

If you cancel, notify the Delaware SGNA in writing electronically to: beth.collins@peninsula.org

or by mail to :
Delaware SGNA
PO Box 3804

Salisbury, MD 21802

-Postmarked by September 20th

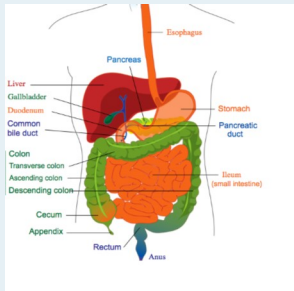
Cancellations received after Sept 20th are nonrefundable.



Nursing changes...

GI changes...

Come learn what is new!



Delaware SGNA
PO Box 3804
Salisbury, MD 21802



Delaware SGNA Fall Conference

September 28, 2019

BayHealth Medical Center in Dover, DE!



5.5 Contact hours!



Location:

**Bayhealth Hospital
Kent Campus**
640 State Street
Dover, DE 19901

Cost includes breakfast and lunch.

Confirmation of registration:

- Sent via email
- Course syllabus/slides available upon request

Accreditation:

This nursing continuing professional development activity was approved by Georgia Nurses Association, an accredited approver by the American Nurses Credentialing Center's Commission on Accreditation for 4.5 CE.

GI specific contact hours are pending through ABCGN.

5.5 CE approved through CBSPD

4.5 CE approved through IAHCMM

1 contact hour will be provided by Olympus

#Proud2BGI

Course Agenda:

Saturday, September 28, 2018	
Time	Topic/ Speaker
7:00 7:50	Registration / Breakfast / Visit Vendors
7:50 8:00	Welcome and Announcements <i>Beth L. Collins</i> <i>President- Delaware SGNA</i>
8:00 8:30	Hung out to Dry <i>Mindy Olympus University</i> <i>(Vendor Program)</i>
8:30- 9:00	Introduction to Waveform Capnography <i>Amanda Fisher, BS, MSN, APRN, AGNCS</i> <i>-BC, CEN</i>
9:00 10:00	A&P of the Alimentary Tract <i>Carol Jones, BSN, RN, CGRN</i>
10:00 10:45	Visit with vendors
10:45 11:45	Safe Abdominal Pressure during Colonoscopy <i>Wendi McDonough, MSN, RN, CPAN,</i> <i>CGRN</i>
11:45 12:45	<i>Lunch/ vendor visits</i>
12:45 1:45	Updates in Inflammatory Bowel Disease <i>TBD</i>
1:45 2:45	Endoscopic Ultrasound: Focus on the Pancreas <i>Halim Charbel, MD</i>
2:45- 3:00	Closing remarks / Evaluations <i>Beth L. Collins</i>

Register Separately for the Olympus presentation by 9/18/19!

Go to www.delawaresgna.com

- ◆ The meeting location is Dover DE
- ◆ Enter all of your contact information
- ◆ If you are prompted to enter a contract number or payment enter "0"

Preferred Registration:

Please go to
www.delawaresgna.com
for the link to register

On-site registration

Name: _____

E-mail: _____

Address: _____

City: _____ State: _____ Zip: _____

Phone: (____) _____

Place of employment: _____

SGNA Member #: _____

On-site registrations are payable by check or credit card

	Early bird	After 09/11/19
SGNA member	\$65.00	\$80.00
Non-SGNA member	\$80.00	\$95.00
GI Associates	\$30.00	\$45.00

A certificate of attendance will be e-mailed to you upon completion of the online evaluation.