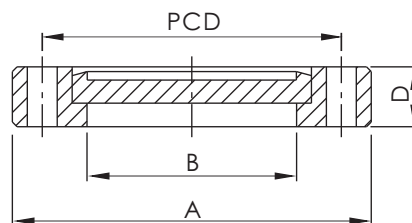


# CF Flanges



## CF BLANK FLANGE, ROTATABLE

\*Material: SS 304L

\*Tapped and Through Holes

CF

Part Number	Flange Size	A (mm)	B (mm)	D (mm)	PCD (mm)	Bolt Holes	Diameter (mm) / Thread Type
CF-BL-133R	CF1.33" (DN1 6)	33.70	19.41	7.60	26.97	6	4.37
CF-BL-133RT	CF1.33" (DN1 6)	33.70	19.41	7.60	26.97	6	8-32
CF-BL-133RM	CF1.33" (DN1 6)	33.70	19.41	7.60	26.97	6	M4
CF-BL-212R	CF2.12" (DN2 5)	53.80	27.94	11.90	41.28	4	6.73
CF-BL-212RT	CF2.12" (DN2 5)	53.80	27.94	11.90	41.28	4	1/4-28
CF-BL-212RM	CF2.12" (DN2 5)	53.80	27.94	11.90	41.28	4	M6
CF-BL-275R	CF2.75" (DN4 0)	69.30	48.31	12.70	58.72	6	6.73
CF-BL-275RT	CF2.75" (DN4 0)	69.30	48.31	12.70	58.72	6	1/4-28
CF-BL-275RM	CF2.75" (DN4 0)	69.30	48.31	12.70	58.72	6	M6
CF-BL-338R	CF3.38" (DN5 0)	85.30	54.50	17.40	72.39	8	8.43
CF-BL-338RT	CF3.38" (DN5 0)	85.30	54.50	17.40	72.39	8	5/16-24
CF-BL-338RM	CF3.38" (DN5 0)	85.30	54.50	17.40	72.39	8	M8
CF-BL-450R	CF4.50" (DN6 3)	113.50	72.39	19.10	92.15	8	8.43
CF-BL-450RT	CF4.50" (DN6 3)	113.50	72.39	19.10	92.15	8	5/16-24
CF-BL-450RM	CF4.50" (DN6 3)	113.50	72.39	19.10	92.15	8	M8
CF-BL-462R	CF4.62" (DN8 0)	117.00	79.71	20.60	102.36	10	8.43
CF-BL-462RT	CF4.62" (DN8 0)	117.00	79.71	20.60	102.36	10	5/16-24
CF-BL-462RM	CF4.62" (DN8 0)	117.00	79.71	20.60	102.36	10	M8
CF-BL-600R	CF6.00" (DN1 00)	151.60	106.17	21.30	130.25	16	8.43
CF-BL-600RT	CF6.00" (DN1 00)	151.60	106.17	21.30	130.25	16	5/16-24
CF-BL-600RM	CF6.00" (DN1 00)	151.60	106.17	21.30	130.25	16	M8
CF-BL-675R	CF6.75" (DN1 30)	170.69	129.50	21.30	151.61	18	8.43
CF-BL-675RT	CF6.75" (DN1 30)	170.69	129.50	21.30	151.61	18	5/16-24
CF-BL-675RM	CF6.75" (DN1 30)	170.69	129.50	21.30	151.61	18	M8
CF-BL-800R	CF8.00" (DN1 60)	202.44	155.70	23.90	181.05	20	8.43
CF-BL-800RT	CF8.00" (DN1 60)	202.44	155.70	23.90	181.05	20	5/16-24
CF-BL-800RM	CF8.00" (DN1 60)	202.44	155.70	23.90	181.05	20	M8
CF-BL-1000R	CF10.00" (DN2 00)	253.24	208.28	24.60	231.85	24	8.43
CF-BL-1000RT	CF10.00" (DN2 00)	253.24	208.28	24.60	231.85	24	5/16-24
CF-BL-1000RM	CF10.00" (DN2 00)	253.24	208.28	24.60	231.85	24	M8
CF-BL-1200R	CF12.00" (DN2 50)	304.04	256.03	25.90	283.97	32	8.43
CF-BL-1200RT	CF12.00" (DN2 50)	304.04	256.03	25.90	283.97	32	5/16-24
CF-BL-1200RM	CF12.00" (DN2 50)	304.04	256.03	25.90	283.97	32	M8
CF-BL-1325R	CF13.25" (DN2 70)	335.79	276.30	28.45	306.32	30	10.49
CF-BL-1325RT	CF13.25" (DN2 70)	335.79	276.30	28.45	306.32	30	3/8-24
CF-BL-1325RM	CF13.25" (DN2 70)	335.79	276.30	28.45	306.32	30	M10
CF-BL-1400R	CF14.00" (DN3 00)	354.84	305.82	28.45	325.37	30	10.49
CF-BL-1400RT	CF14.00" (DN3 00)	354.84	305.82	28.45	325.37	30	3/8-24
CF-BL-1400RM	CF14.00" (DN3 00)	354.84	305.82	28.45	325.37	30	M10
CF-BL-1650R	CF16.50" (DN3 50)	418.34	359.61	28.45	388.87	36	10.49
CF-BL-1650RT	CF16.50" (DN3 50)	418.34	359.61	28.45	388.87	36	3/8-24
CF-BL-1650RM	CF16.50" (Dn350)	418.34	359.61	28.45	388.87	36	M10

\*Note: SS 316LN Material Available on Request.