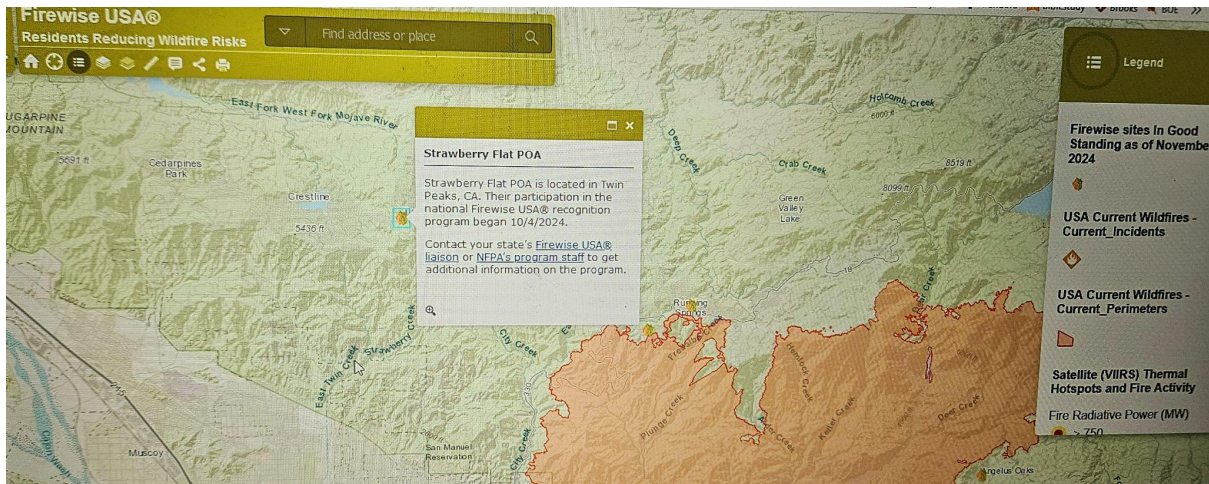


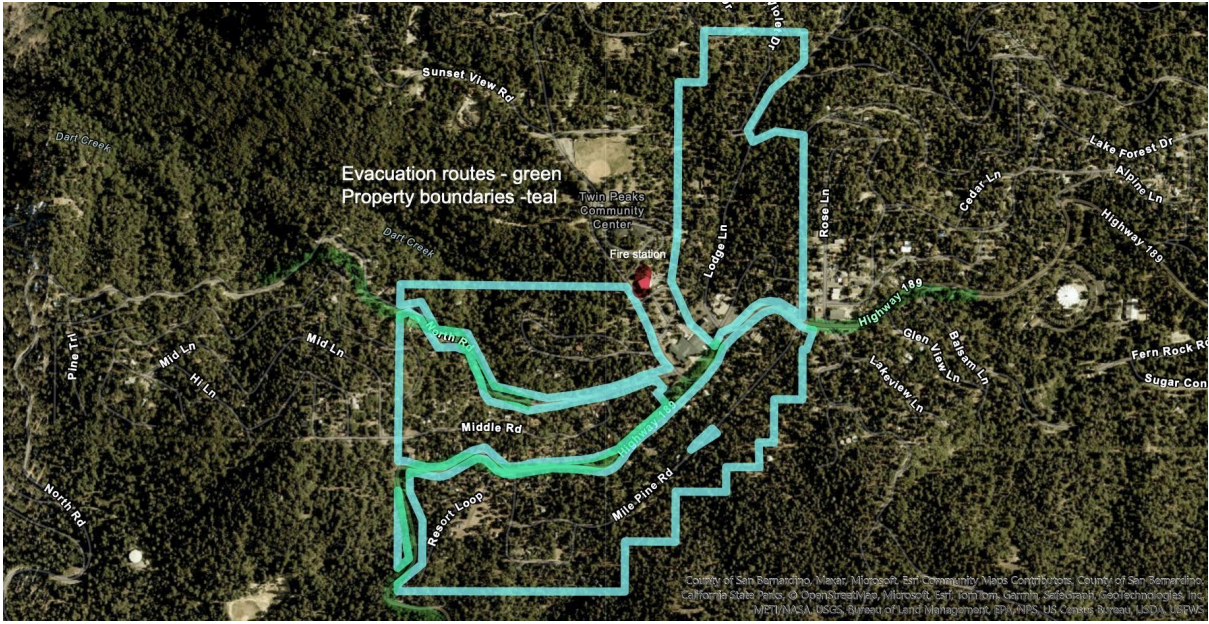
Firewise Material:

Here is the link you can supply them if your insurance company is not accepting the other maps. They will have to click on the leaf in the twin peaks area.

<https://www.nfpa.org/education-and-research/wildfire/firewise-usa/firewise-usa-sites>

Here is a pic of the website:





*Strawberry Flat Property Owners Association
July 2015 - Rev. July 2021*

Tract No. 7909

- Fern/Violet
- Lodge Lane
- Big Tree Road
- Fire Hall Loop
- Mile Pine Road
- Mile High Road
- Tie Road
- Resort Loop
- Middle Road
- Connector Road
- Sunset Loop

