

Design Create Innovate
Amate
*Studios*TM
Design Create Innovate

2016

*Designer's Collection*TM

BY AMATE STUDIOS

- Page 2 -

BASE | **ELEMENTS**TM
BY AMATE STUDIOS

- Page 21 -

DIFFUSING
LOCKETSTM

- Page 25 -

THE **SNAP**
FASHIONTM

- Page 30 -

Amate
*fashion*TM

- Page 41 -

Amate
*Fine Jewelry*TM

- Page 53 -

Amate
GLOWTM

- Page 74 -

www.AmateStudios.com

Mesa , Arizona

handmade@amatestudios.com

© Copyright Amate Studios 2005-2016
All rights reserved

Designer's Collection™ BY AMATE STUDIOS™ A complete collection of hand fabricated jewelry bezels and findings. Each piece is completely built by hand, using sheet metal and wire, and finished on a polishing wheel. Most items can be made in solid copper, solid, brass, .925 sterling silver or plated in sterling silver or plated in 18 karat gold. Each piece has a high-end, designer made, handcrafted look.

BASE ELEMENTS™ BY AMATE STUDIOS™ A collection of solid brass and silver plate over brass hand finished jewelry bezels. Each piece is individually stamped and then all loops, bails, brooches, etc., are hand soldered. The pieces are hand sanded, polished and buffed on a polishing wheel prior to being plated. Some items available in solid copper. Contact us for details

DIFFUSING LOCKETS™

Ready to wear, aromatherapy, essential oil jewelry diffusers. This line of jewelry diffusers includes 2 collections to fit anyone's style. The first is made of 316L surgical grade, laser welded, stainless steel. It has a magnetic closure and 2 interchangeable leather pads. This collection includes pendants, bracelets and sized rings. The second collection is comprised of decorative cage style lockets. These cage diffusers include a chain and 3 interchangeable felt diffuser balls. This collection includes only pendants.

SNAP FASHION™

A fun and stylish, interchangeable, ready-to-wear jewelry line. Choose a bracelet, pendant, earrings, or a set, then choose a snap to accentuate your style. In addition to being able to **Change Your Style in A Snap™**, you can also create your own snaps and style using our line of snap blanks and component findings.

Amate Fashion™

A handcrafted line of ready-to-wear jewelry and accessories. Most pieces are completely handmade, just like the Designer's Collection™. Items are available in solid copper, solid brass, fine silver over brass and .925 sterling silver. Contact us for minimums.

Amate Fine Jewelry™

A ready-to-wear fine jewelry line. Featuring the designs of Armondo Barry, the pieces are both elegant and modern. Choose from pendants, bracelets, earrings and cufflinks. This collection is hand fabricated in sterling silver..

Amate GLOW™

A ready to wear, Glow in the Dark, jewelry line. Silver plated jewelry made with a non-toxic, glow in the dark medium. Purchase a finished piece for your store or the supplies to make your own. A great way to express your fun side! Custom designs available with any Amate Studios™ finding.

NOTES:

1. Items in the catalog are available in the following finishes, some by special order:

SO- Sterling Silver Plate over Solid Brass (shiny) **CP-** Solid Copper **AB-** Antique Brass

SM- Sterling Silver Plate over Brass (matte) **GB-** Solid Brass **SS-** .925 Sterling Silver

2. **We are a manufacturer**, therefore NOT all items in the catalog will be in stock. Items that are in stock normally ship within 2 business days. Back orders, *special order items (generally not in stock), and custom orders, all have a lead time between 3-6 weeks, depending upon the time of year and current production levels.

3. To start a **CUSTOM ORDER**, see the inside of the back cover.

4. **The dimensions** listed for bezels are mostly measured in millimeters at the bottom, **inside** of each piece. The last number is the depth of the bezel.

5. **Each piece is handmade** or hand finished; therefore, dimensions may vary slightly from one piece to another.

6. **Quick Conversion:** 1/4 inch = 6.4 mm, 1 inch = 25.6 mm, 1 oz = 28.37 grams, 1 lb = 454 grams

7. **Minimum order** amount is \$125. Prices are per piece (pairs for earring and cufflinks), and sold in quantities of 6 unless noted.

8. For details about our **returns policy**, please visit www.amatestudios.com/return-policy.html

Designer's Collection™

BY AMATE STUDIOS



Designer's Collection™ BY AMATE STUDIOS A complete collection of hand fabricated jewelry bezels and findings. Each piece is completely built by hand, using sheet metal and wire, and finished on a polishing wheel. Most items can be made in solid copper, solid, brass, .925 sterling silver or plated in sterling silver or plated in 18 karat gold. Each piece has a high-end, designer made, handcrafted look.

New

Rings



50970034
15x2mm



50960143
22 x 3mm



50960229
24 x 4mm



50960230
24 x 4mm



50970031
28.5x36x3mm



50970033
18x2mm



50970035
25x18.7x2mm

New

Earrings



70970033
18x2mm



70970034
15x2mm



70970035
25x18.7x2mm

All Items on this page available in the following finishes/metals:
SO - Sterling Silver Plated CP - Solid Copper GB - Solid Brass

p.3 We do custom work!
Contact us for a quote!

www.AmateStudios.com
handmade@AmateStudios.com

© Copyright Amate Studios 2005-2016
All rights reserved

New



40880256
"Swirl & Curl"

Not Closed



40880257
"Curl with Flat Pad"

Not Closed



Closed



Closed



Adjustable Ring
50600515
15 mm



Adjustable Ring
50600520
20 mm



Flat Pad Rings
semi-adjustable
6/7 or 7/8



half-round thin band
Adjustable Ring

54910310-T
10 mm round pad

54910315-T
15 mm round pad

50990310-B12
10 mm pad

50990320-B12
20mm pad

54910320-T
20 mm round pad

50990315-B12
15mm pad

New

Reversible Component



DE-COM-901
8 mm outside

Example:



scan to see how it works



Side 1

Side 2

New



65980410
10mm pad



65980411
15mm pad



65980408
8mm pad

We do custom work!
Contact us for a quote!

www.AmateStudios.com
handmade@AmateStudios.com

© Copyright Amate Studios 2005-2016
All Rights Reserved

Flat Pad Jewelry



50600204
21.85 mm

50600304
30 x 22.6 mm

50600404
28.88 x 16.1 mm

50600504
23.88 mm

50600515
15 mm

50600520
20 mm

NEW

Cuff Links



*10980204
21.85 mm

*10980304
30 x 22.6 mm

*10980404
28.88 x 16.1 mm

*10980504
23.88 mm

Linked Bracelets

Approx. 8.5" long



81980204

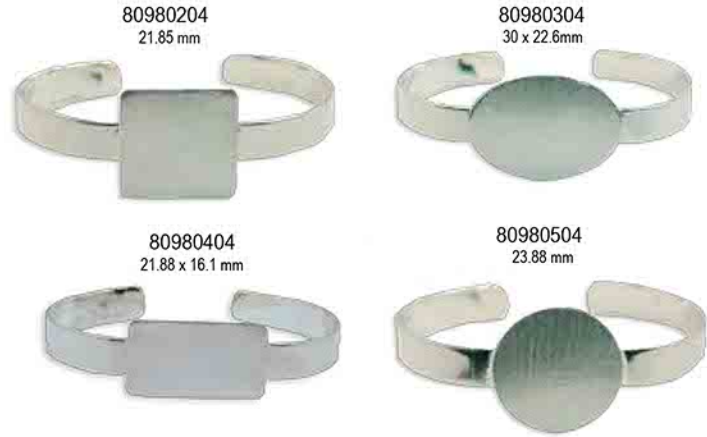
81980304

81980404

81980404

Cuff Bracelets

AVAIL In SO-GB-CP



80980204
21.85 mm

80980304
30 x 22.6 mm

80980404
21.88 x 16.1 mm

80980504
23.88 mm

Earrings/Pendants

2 pack w/2 jump rings
& 2 earwires



65980204
21.85 mm

65980304
21.85 mm

65980404
28.88 x 16.1 mm

65980504
23.88 mm

*Special order item.

Please contact us for minimum order quantities.

We do custom work!
Contact us for a quote!

www.AmateStudios.com
handmade@AmateStudios.com

© Copyright Amate Studios 2005-2016
All Rights Reserved

Earrings

Deep-welled



70990189
5/8" x 4 mm



70990170
21 x 11 x 4mm



70990093
19 x 4 mm



*70990190
1" x 4 mm



*70990173
36.8 x 11.5 x 4mm

Shallow-welled



70600189
5/8" x 2mm



70600170
21 x 11 x 2mm



70600093
19 x 2mm



70600173
36.8 x 11.5 x 2mm



*70600183
26.3 x 2mm

Channel Earrings



Designed by:
Sally Mae Kinsey



70200356
4 mm channel



71200354
4 mm channel



71200355
4 mm channel

Cuff Links



10100004
12.7 x 2.5mm



10990196
16 x 4mm



10990145
1" X 4 mm



10990190
1" x 4mm



10990093
19.15 x 4mm



10990195
16 x 4mm



10990184
19 x 23 x 4mm

Flat-pad Cuff Links



*10980204
21.85 mm



*10980304
30 x 22.6 mm



*10980404
28.88 x 16.1 mm



*10980504
23.88 mm

*Special order item.

Please contact us for minimum order quantities.

We do custom work,
contact us for a quote!

www.AmateStudios.com
handmade@AmateStudios.com

© Copyright Amate Studios 2005-2016
All rights reserved

Linked Bracelets

80600015
5/8 Inch x 4mm



80600016
5/8 Inch x 4mm



80600017
5/8" x 4mm circles
and squares



80600018
5/8" x 4mm circles
21' x 11mm rectangles



80600019
5/8" x 4mm circles
5/8" diamonds



Channel Cuffs , Bangles and Rings

Designer's Collection™



9 mm narrow channel cuff bracelet
88200863



552200350
5.5 mm channel
sizes 6 - 11



25 mm narrow center channel cuff bracelet
88200862



29 mm wide channel cuff bracelet
88200864



552200351
4mm channel
sizes 6 - 11



35 mm wide center channel cuff bracelet
88200861

NEW



552200416
18mm channel
sizes 6 - 10

NEW



552200417
9mm channel
sizes 6 - 10



29 mm wide channel bangle bracelet
7½" - 88200867
8½" - 88200868
9½" - 88200869



9 mm narrow channel cuff bracelet
7½" - 88200357
8½" - 88200358
9½" - 88200359



Designed by:
Robin D Beam

By Amate Studios™

We do custom work!
Contact us for a quote!

www.AmateStudios.com
handmade@AmateStudios.com

© Copyright Amate Studios 2005-2016
All rights reserved

Pendant Trays

By Amate Studios™

60600126
76.9 x 28.3 x 2mm



60600172
42.3 x 21 x 2mm



60600171
31.5 x 16 x 2mm



60600095
33.4 x 21.7 x 2mm



60600170
21 x 11 x 2mm



60600122
35.8 x 22.8 x 2mm



60600123
56 x 26 x 2mm



*60600089
5/8" x 4mm



60600144
18 x 2mm



60600085
21.15 x 2mm



60600145
1" x 2mm



60600120
28.9 x 2mm



60600121
35.6 x 2mm



60600125
41.6 x 2mm



*60600180
53.7 x 2mm



60600179
43 x 2mm



60600142
38.5 x 2mm



Designed by:
Brenda Liston-Blanchard

60600093
19 x 2mm



60600143
22.2 x 2mm



60600090
28 x 2mm



60600178
1 1/4"



60600124
34.5 x 2mm



60600165
51 x 27 x 2mm



60600161
41.5 x 33.2 x 2mm



60600127
44 x 53 x 2mm



60600174
50.8 x 16.3 x 2mm



60600173
36.8 x 11.5 x 2mm



60600159
31.7 x 50.76 x 2mm



60600158
37.8 x 18.7 x 2mm



60600160
24 x 20.45 x 2mm



60600184
19 x 23 x 2mm



60600183
26.3 x 2mm

*Special order item.

Please contact us for minimum order quantities.

We do custom work!
Contact us for a quote!

www.AmateStudios.com
handmade@AmateStudios.com

© Copyright Amate Studios 2005-2016
All rights reserved

Designer's Collection™

Deep Welled Pendants & Linked Bracelets



60990192
21.5 x 42.6 x 4mm



60600201
21 x 4mm



60990145
25.4 x 4mm



60990191
38.5 x 5mm



60600401
27.5 x 14 x 4mm



60990171
31 x 16 x 4mm



60990172
42 x 21 x 4mm



60990190
25.6 x 4mm



60600501
23 x 4mm



60600301
30 x 20 x 4mm



60990162
48.25 x 55.78mm



38200001
Bottle topper bottom



38990190
1" Circle bottle topper
w/screw bottom



38990145
1" Square bottle topper
w/screw bottom



Designed by:
Sandi Love

Designer's Collection™

By *Amate Studios™*

We do custom work,
contact us for a quote!

www.AmateStudios.com
handmade@AmateStudios.com

© Copyright Amate Studios 2005-2016
All rights reserved

Lipped Pendants

By Amate Studios™



60960229 T 552
23.9 x 4mm
60960146 T 552
32.5 x 4mm



60960229 T 526
23.9 x 4mm
60960146 T 526
32.5 x 4mm



60960158 172
37.8 x 18.7 x 6mm



609960143 229
22.2 x 6mm



60970035
25 x 18.7 x 2mm



60970031
29 x 21 x 4mm



60960171
31 x 16 x 4mm



60960172
42 x 21 x 6mm



60960158
37.8 x 18.7 x 6mm



60960165
51 x 27 x 6mm



60970034
15 x 3mm



60960143
22.2 x 3mm



60960124
34.5 x 6mm



60970033
18 x 2mm



60960229
23.9 x 4mm



60960146
32.5 x 6.5mm

Deco Edge Deep Well Pendants



*60600124 W15
34.5 x 8mm



side view



*60600124 W19
34.5 x 6mm



side view

*Special order item.

Please contact us for minimum order quantities.

We do custom work!
p.11 Contact us for a quote!

www.AmateStudios.com
handmade@AmateStudios.com

© Copyright Amate Studios 2005-2016
All rights reserved

Designer's Collection™

Interchangeable Links, Bands, and Pendants

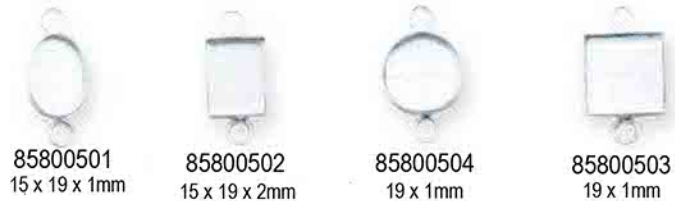


Deep Welled - 4mm Deep

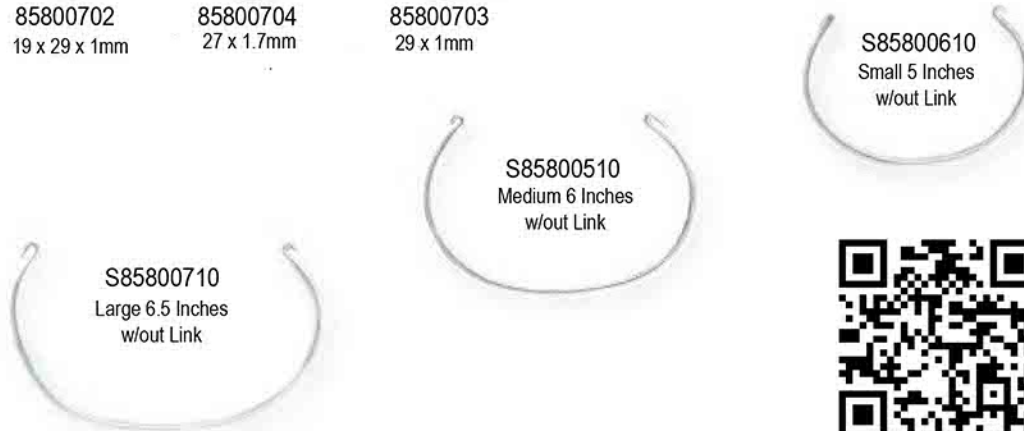


Designed by:
Christina Cassidy

Shallow Welled - 1 mm Deep



Items on this page are 50% of scale



Scan code to view how these interchangeable bracelets work.

We do custom work!
Contact us for a quote!

www.AmateStudios.com
handmade@AmateStudios.com

© Copyright Amate Studios 2005-2016
All rights reserved

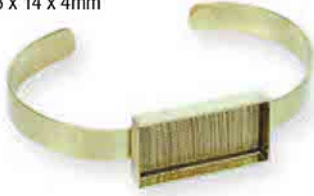
Deep Welled Cuff Bracelets

*80600202
21 x 4mm



*80600502
23 x 4mm

*80600402
27.3 x 14 x 4mm



*80600302
30 x 20 x 4mm



*80990158
37.8 x 18.5 x 4mm



*80990171
16 x 31.5 x 4mm



*80990145
1" x 4mm



*80990190
1" x 4mm

Belt Buckles



30600311
77 x 2mm

30600313
96.6 x 70.7 x 2 mm



Designed by:
Heidi Easton-Pichler



30600312
77 x 2mm



*Special order item.

Please contact us for minimum order quantities.



30600314
77.5 x 51.9 x 2 mm

We do custom work!
Contact us for a quote!

www.AmateStudios.com
handmade@AmateStudios.com

© Copyright Amate Studios 2005-2016
All rights reserved

Adjustable Rings

New



50600184
19 x 23 x 2mm



50600203
21 x 3mm



50600503
23 x 3mm



50600303
30 x 20 x 3mm



50600403
27.5 x 14 x 3mm



50990171
1 1/4 x 5/8" x 4mm



50990170
10.6 x 21 x 4mm



50990195
5/8" x 4mm



50990190
1" x 4mm



50990158
3/4x1" 1/2"x4mm



50600198
1 27/32 x 1 3/16 inch



50990145
25.4 x 4mm

half-round thin band



50990310-B12 10 mm pad
50990320-B12 20mm pad

50990315-B12
15mm pad

Semi-Adjustable Rings

Sizes (before adj.) 6.5 & 7.5
Please specify size when ordering



Circle
54990195-T
5/8" x 4mm



Square
54990189-T
5/8" x 4mm



Oval
54990303-T
30 x 20 mm



Rectangle
54990170-T
10.6 x 21 x 4 mm



Flat
54910310-T
10 mm round pad

54910315-T
15 mm round pad

54910320-T
20 mm round pad

Available in sizes 6-9 - custom sizes upon request
Please specify size when ordering



Circle
*55990190-B11
1" x 4mm

*55990195-B11
5/8" x 4mm



Oval
*55990303-B11
30 x 20 x 4mm



Square
*55990189-B11
5/8" x 4mm



Rectangle
*55990170-B11
10.6 x 21 x 4mm

*55990403-B11
\$5.25
27.5 x 14 x 4 mm

All Items on this page available in the following finishes/metals:
SO - Sterling Silver Plated CP - Solid Copper GB - Solid Brass

*Special order item.
Please contact us for minimum order quantities.

We do custom work,
contact us for a quote!

www.AmateStudios.com
handmade@AmateStudios.com

© Copyright Amate Studios 2005-2016
All rights reserved

WIRE EARRING/PENDANT SETS

CAN BE WORN "AS-IS" OR ADD YOUR OWN EMBELLISHMENT



H2O-7107
SO-CP-GB



H2O-7108
SO-CP-GB

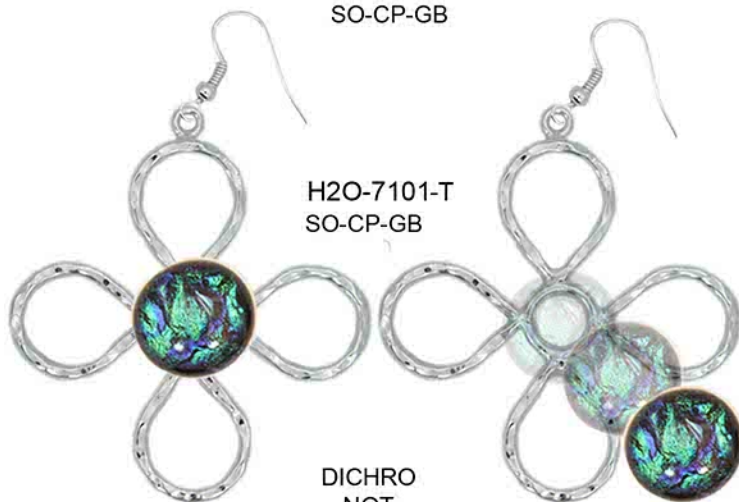
DICHO
NOT
INCLUDED



H2O-7110
SO-CP-GB



H2O-7109
SO-CP-GB



H2O-7101-T
SO-CP-GB

DICHO
NOT
INCLUDED



RING
H2O-7120
SO-CP-GB



CUFF #39
SO-CP-GB



By Amate Studios™

Designer's Collection™

We do custom work!
Contact us for a quote!

www.AmateStudios.com
handmade@AmateStudios.com

© Copyright Amate Studios 2005-2016
All Rights Reserved

Wear as earrings or as a pendant!!

Sold by the pair w/ 2 ear wires(attached) and 2 jump rings



H2O-7106
SO-CP-GB



H2O-7102
SO-CP-GB



H2O-7103
SO-CP-GB



H2O-7105
SO-CP-GB



H2O-7104
SO-CP-GB



H2O-7111
SO-CP-GB



Glue on Bails

BACK FRONT SIDE VIEW



Bail #1



Bail #2



Bail #3



Bail #4



Bail #5



Bail #6



Bail #7



Bail #8



Bail #9



Bail #10



Bail #12



Bail #13



Bail #14



Bail #15



Bail #16



Bail #11



Bail #17

All Items on this page available in the following finished/metals:
SO-Sterling Silver Plated CP-Solid Copper GB- Solid Brass

We do custom work!
 Contact us for a quote!

www.AmateStudios.com
handmade@AmateStudios.com

© Copyright Amate Studios 2005-2016
 All rights reserved



Bail #22



Bail #23



Bail #24



Bail #25



Bail #26



Bail #27



Bail #18



Bail #19



Bail #20



Bail #21



All Items on this page available in the following finished/metals:
SO-Sterling Silver Plated CP-Solid Copper GB- Solid Brass



We do custom work!
Contact us for a quote!

www.AmateStudios.com
handmade@AmateStudios.com

© Copyright Amate Studios 2005-2016
All Rights Reserved

Wide Band Cuffs

By Amate Studios™

Designer's Collection™



Square Cuff w/decorative band
& round bezel

*82990190
1" x 4mm



Square Cuff w/decorative band
& square bezel

*82990145
1" x 4mm



Round Cuff w/decorative band
& round bezel

*84990190
1" x 4mm



Round Cuff w/regular band
& round bezel

*81990190
1" x 4mm



Square Cuff w/regular band
& square bezel

*83990145
1" x 4mm



Square Cuff w/regular band
& round bezel

*83990190
1" x 4mm

*Special order item.

Please contact us for minimum order quantities.

**All Items on this page available in the following finishes/metals:
SO - Sterling Silver Plated CP - Solid Copper GB - Solid Brass**

p.19 We do custom work!
Contact us for a quote!

www.AmateStudios.com
handmade@AmateStudios.com

© Copyright Amate Studios 2005-2016

All Rights Reserved

Textured Flat Pendants



60980143 T526
33mm



60980143 T539
33mm



60980143 T542
33mm



*60980143 T545
33mm



*60980158 T526
30 x 50 mm



60980158 T539
30 x 50 mm



60980158 T542
30 x 50 mm



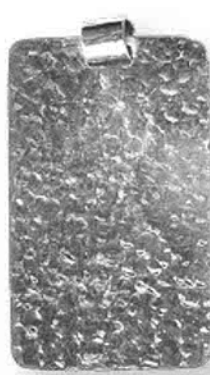
*60980158 T545
30 x 50 mm



*60980172 T526
33 x 54 mm



60980172 T539
33 x 54 mm



60980172 T542
33 x 54 mm



*60980172 T545
33 x 54 mm



*60980229 T526
35mm



60980229 T539
35mm



60980172 T542
35mm



*60980172 T545
35mm

*Special order item.
Please contact us for minimum order quantities.

Designer's Collection™

By Amate Studios™

We do custom work!
Contact us for a quote!

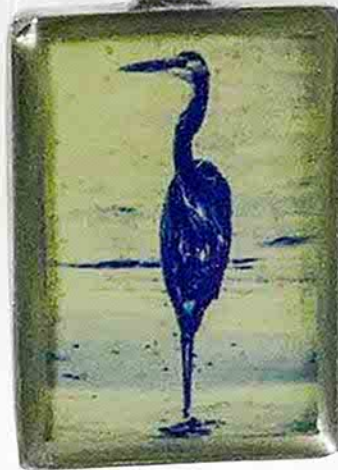
www.AmateStudios.com
handmade@AmateStudios.com

© Copyright Amate Studios 2005-2016
All Rights Reserved

BASE

ELEMENTS™

BY AMATE STUDIOS



A collection of solid brass and silver plate over brass hand finished jewelry bezels. Each piece is individually stamped and then all loops, bails, brooches, etc., are hand soldered. The pieces are hand sanded, polished and buffed on a polishing wheel prior to being plated. Some items available in solid copper. Contact us for details.

New



RG-111
28.5 x 36 x 3mm



RG-009
12.8 x 38 x 4mm



DE-009
12.8 x 38 x 4mm

Bracelets

BL-066
19 x 4.25mm



BL-053
11 x 16.9 x 2.85mm



BL-001
19.3 x 1.3mm



BL-072
26 x 3mm



BL-5337



BL-5301



BL-6601



BASE

ELEMENTS™

By **Amate Studios™**

We do custom work!
Contact us for a quote!

www.AmateStudios.com
handmade@AmateStudios.com

© Copyright Amate Studios 2005-2016
All rights reserved

Pendants



All items on this page are also available in solid copper(CP),solid brass(GB) finish by special order
 minimum quantities are 24 pieces per item

Adjustable Rings



RG-076
16.9 x 3mm



RG-074
22 X 2.5mm



RG-097
28.2 x 21.4 x 3.2mm



RG-098
27.6 x 20.45 x 5.3mm



RG-018
16.5 x 14 x 3.6mm



RG-053
11 x 16.9 x 2.8mm



RG-094
17 x 23.75 x 4.2mm



RG-004
12.7 x 3.6 mm



RG-005
15.78 x 3.4 mm



RG-066
19 x 4.25 mm

Post Earrings

Earrings



EP-028
10.5 x 2.75mm



EP-004
12.7 x 3.6mm

DE-028
10.5 x 2.75 mm



DE-076
16.9 x 3mm



DE-074
22 x 2.5mm



DE-037
10.15 x 16 x 3.5mm



DE-020
17 x 22.3 x 2.75mm



DE-186
32.1 x 6.65mm



DE-086
14.5 x 14.5 x 3 mm



DE-082
15 x 14.5 mm



DE-089
27.5 x 18.8 x 3mm



DE-053
11 x 16.9 x 2.8mm



DE-004
12.7 x 3.6mm



DE-066
19 x 4.25mm



All items on this page are also available in solid copper(CP),solid brass(GB) finish by special order
minimum quantities are 24 pieces per item

We do custom work!
Contact us for a quote!

www.AmateStudios.com
handmade@AmateStudios.com

© Copyright Amate Studios 2005-2016
All rights reserved



NEW

DIFFUSING™ LOCKETS



Ready to wear, aromatherapy, essential oil jewelry diffusers. This line of jewelry diffusers includes 2 collections to fit anyone's style. The first is made of 316L surgical grade, laser welded, stainless steel. It has a magnetic closure and 2 interchangeable leather pads. This collection includes pendants, bracelets and sized rings. The second collection is comprised of decorative cage style lockets. These cage diffusers include a chain and 3 interchangeable felt diffuser balls. This collection includes only pendants.



DIFFUSING™
LOCKETS
.COM



Matching Diffused Designs



All Items are 316L Stainless Steel.
Each item comes with 2 leather inserts.
All pendants come with choice of silver or gold 24 inch chain.

p.26
handmade@amatestudios.com

www.AmateStudios.com

©2016 Diffusing Locketts All Rights Reserved



Matching Diffused Designs

PENDANTS



SP-001
30mm



SC-001
30mm



SP-002
30mm



SC-002
30mm



SP-007
30mm



SC-007
30mm

BRACELETS



SPB-007
25mm



SCB-007
25mm



SPB-002
25mm



SCB-002
25mm



SPB-001
25mm



SCB-001
25mm

RINGS

Available in sizes
6-9



SPR-001
20mm



SCR-001
20mm



SPR-002
20mm



SCR-002
20mm



SPR-007
20mm



SCR-007
20mm

All Items are 316L Stainless Steel.

Each item comes with 2 leather inserts.

All pendants come with choice of silver or gold 24 inch chain.



New
PENDANTS



Extra Inserts

For The Stainless Steel Locket



For The Cage Locket



All Items are 316L Stainless Steel.
Each item comes with 2 leather inserts.
All pendants come with silver 24 inch chain.

DIFFUSING CAGE LOCKETS

DIFFUSING
LOCKETS
.COM



DCL-1013
18mm



DCL-1020
18mm



DCL-1022
17mm



DCL-1009
19.7mm



DCL-1016
18mm



DCL-1014
18mm



DCL-1026
18mm



DCL-1012
20.9 x 29.4mm



DCL-1017
19.9mm



DCL-1018
18mm



DCL-1015
18mm



DCL-1004
18mm



DCL-1001
18mm



DCL-1027
18mm



DCL-1010
18mm



DCL-1011
19.5 x 19mm



DCL-1005
18mm



DCL-1006
16mm



DCL-1007
18mm



DCL-1002
17mm



DCL-1029
17mm



DCL-1019
18mm



DCL-1003
17mm



DCL-1023
24.5 x 17mm



DCL-1021
17.6mm



DCL-1021
18mm



DCL-1030
18mm



DCL-1031
18mm



DCL-1028
18mm

All Diffusing Cage Lockets on this page come with 3 colored felt diffuser balls.
All Diffusing Cage Lockets on this page are a plated metal and include a chain.

DIY SNAP FASHION™

Change Your Style In A Snap™

A fun and stylish, interchangeable, ready-to-wear jewelry line. Choose a bracelet, pendant, earrings, or a set, then choose a snap to accentuate your style. In addition to being able to **Change Your Style In A Snap™**, you can also create your own snaps and style using our line of snap blanks and component findings.



Phone:
602-330-2862

Email:
handmade@amatestudios.com

www.AmateStudios.com



SNAP COMPONENTS AND PARTS



COMN
Magnetic Clasp
For Necklace



COM1B
Slide Clasp
For Bracelet



COM3B
Metal Base
For Bracelet



SNB1
Blank snap
(Male)
Sold in
25 - 50 - 100 pack



GCAB
Glass Cab
to fit Blank snap
Sold in
25 - 50 - 100 pack



ST0007
Punch Tool For Snap
Sold individually



ST0005
Die Set For Punch Tool
Sold individually



SNB2PT
Snap Blank
(To be used with
punch tool female)
Sold in
25 - 50 - 100 pack





LBR0801



LBR0804



LBR0809



LBR0842



LBR0808



LBR0807



LBR0901-25-3



LBR0903-25-3



MBR3337



MBR3335-3



MBR3336-5



LNK3396



LNK3395



PN3378



PN3363



PN3315



PN3316



PN3349



PN3320



PN3352



LBR0901-22



LBR0902-22



MBR-7122



EAR-7213



EAR-7214



RG3301



PN3307



MLK3324



EAR3302



LARGE MBR1710



MEDIUM MBR1510



PN-7212
 These items
 sold in 10 packs



MBR1510

Snap Sold Separately



SMALL MBR1610





EAR-7111



EAR-7104



EAR-7106



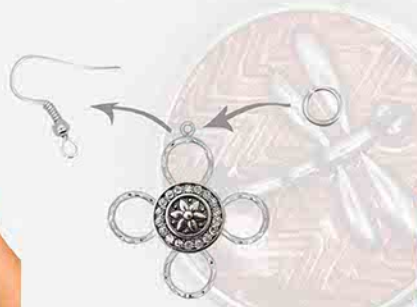
EAR-7102



EAR-7103



EAR-7105



The snaps are sold separately



These items sold in packs of 10



RG-7120



MBR-7122

EAR-7107



EAR-7108



EAR-7109



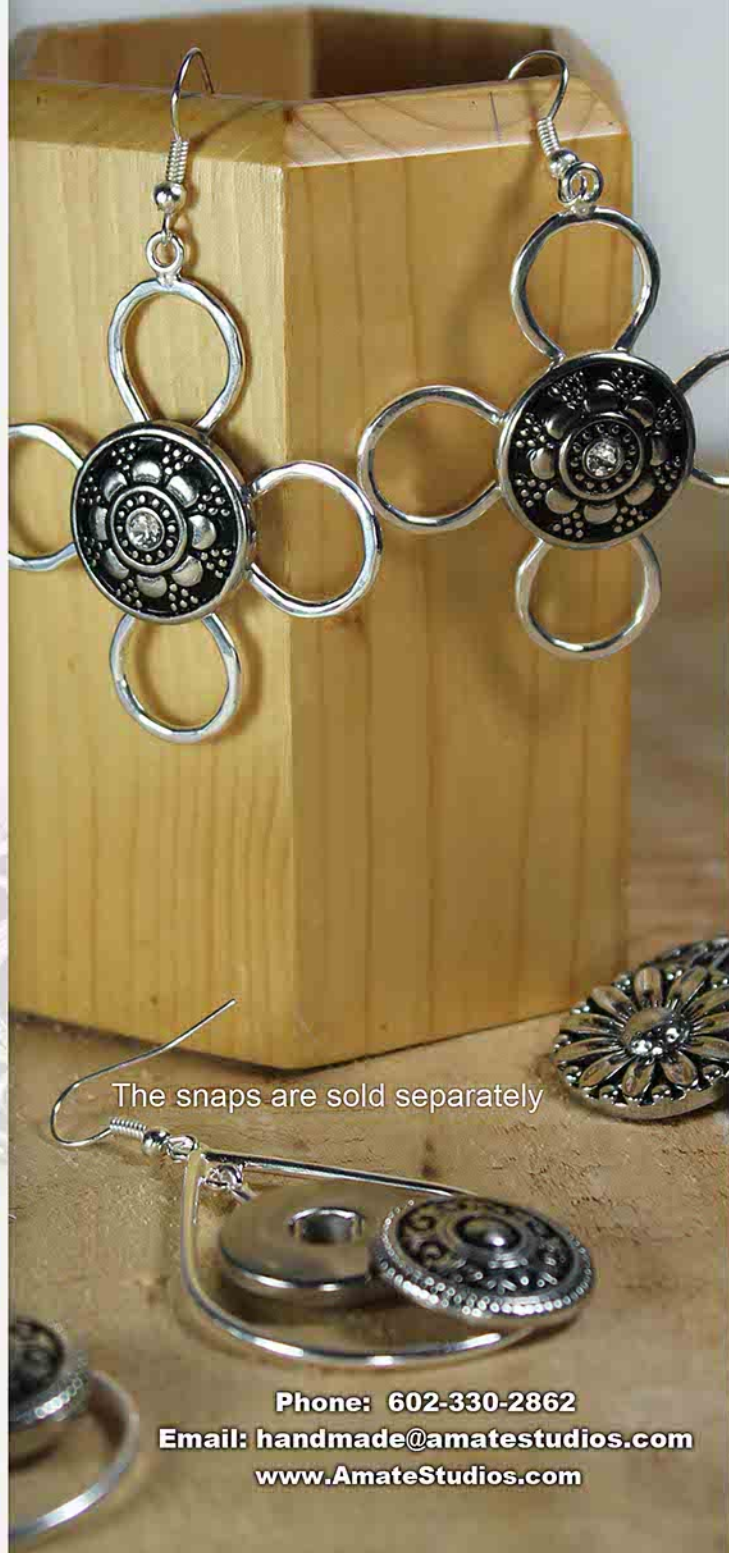
EAR-7110



EAR-7101



In a SNAO FASHION



The snaps are sold separately

Phone: 602-330-2862

Email: handmade@amatestudios.com

www.AmateStudios.com



SN3827



SN3824



SN3806



SN3807



SN3828



SN3814



SN3811



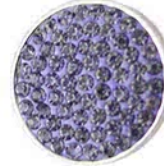
SN3809



SN3804



SN3821



SN3823



SN3801



SN3810



SN3812



SN3808



SN3815



SN3802



SN3820



SN3818



SN3803



SN3819



SN3825



SN3817



SN3813



SN3816



SN3805



SN3829



SN2418
LIMITED EDITION



SN2421



SN7757



SN5413



SN7584



SN2187
LIMITED EDITION



SN2186
LIMITED EDITION



SN7585



SN6059



SN5085



SN5084



SN7744



SN5076



SN7747



SN7743



SN7767



SN7766



SN7526



SN7528



SN7527



SN7770
LIMITED EDITION



SN7535



SN5450



SN7598



SN7636



SN5074



SN6148



SN7005



SN6146



SN6057



SN7553



SN7552



SN7554



SN7950



SN7533



SN5121



SN6118



SN7717



SN7716



SN7709

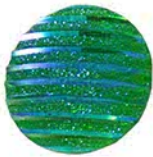


SN7845



Snaps Sold Separately
MBR3335-3

Change Your Style In A Snap™



SN2236



SN2239



SN5217



SN5214
LIMITED EDITION



SN2701-AL



SN2701-AD



SN2701-AC



SN2701-AQ



SN2701-AN



SN2701-AK



SN2701-AI



SN2701-AA



SN2701-AB



SN2701-AO



SN2701-AP



SN2501-BB



SN2501-AA



SN7808



SN7820



SN7806



SN7785



SN7780



SN7786



SN7501



SN6136



SN5452
LIMITED EDITION



SN5408



SN5403



SN5412



SN5235



SN5193



SN7001



SN6087



SN5410



SN5114



SN5419



SN5430

Snap Sold Separately



LBR0901-22



SN2020N



SN2022



SN2013



SN2019



SN2014



SN2011



SN7923



SN7924



SN7417



SN7418



SN7419



SN7416



SN7790



SN7618



SN8039



SN7852
LIMITED EDITION



SN7851
LIMITED EDITION



SN5183



SN7758



SN8036



SN2511-AH



SN5021



SN6101



SN2506-AG



SN2503-AU



SN2501-AI



SN2501-AE



SN2526



SN4020



SN6008
LIMITED EDITION



SN2966
LIMITED EDITION



SN2967



SN2964
LIMITED EDITION



SN2860

Snap Sold Separately



LBR0801

Amate *fashion*™



Amate *fashion*™

A handcrafted line of ready-to-wear jewelry and accessories. Most pieces are completely handmade, just like the Designer's Collection™. Items are available in solid copper, solid brass, fine silver over brass and .925 sterling silver. Contact us for minimums.

New



40880256
"Swirl & Curl"

Not Closed



40880257
"Curl with Flat Pad"

Not Closed



Closed



Closed

Adjustable Ring
50600515
15 mm

Adjustable Ring
50600520
20 mm



Flat Pad Rings
semi-adjustable
6/7 or 7/8



half-round thin band
Adjustable Ring

54910310-T
10 mm round pad

54910315-T
15 mm round pad

50990310-B12
10 mm pad

50990320-B12
20mm pad

54910320-T
20 mm round pad

50990315-B12
15mm pad

New

Reversible Component



DE-COM-901
8 mm outside

New



65980410
10mm pad



65980411
15mm pad



65980408
8mm pad



scan to see how it works

Example:



Side 1

Side 2

We do custom work!
Contact us for a quote!

www.AmateStudios.com
handmade@AmateStudios.com

© Copyright Amate Studios 2005-2016
All Rights Reserved

Neckwires

BY Amate Studios™



All Items on this page available in the following finishes/metals:
SO - Sterling Silver Plated CP - Solid Copper GB - Solid Brass

© Copyright Amate Studios 2005-2016
All rights reserved

do custom work!
contact us for a quote!

www.AmateStudios.com
handmade@AmateStudios.com

Amate Studios™
Fashion

Neckwires



*40880238
Flat "V"



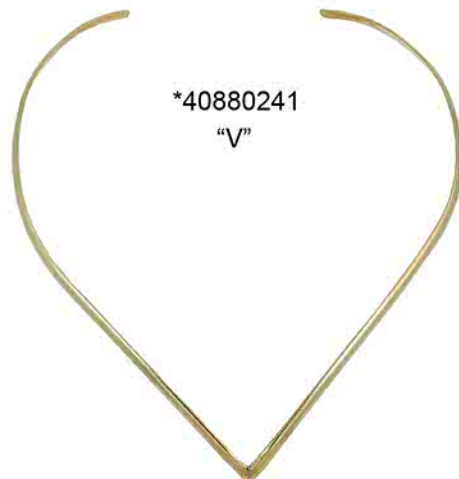
*40880240
"Twisted"



40880236
"Plain wire"



*40880242
"U"



*40880241
"V"

* Special order item.
Please contact us for minimum order quantities.

**All Items on this page available in the following finishes/metals:
SO - Sterling Silver Plated CP - Solid Copper GB - Solid Brass**

We do custom work!
Contact us for a quote!

www.AmateStudios.com
handmade@AmateStudios.com

© Copyright Amate Studios 2005-2016
All Rights Reserved

p.44



40880245
"Flat Open Diamond"



40880244
"Round Single Curl"

Designed by:
Joanne Markiewicz



*40880237
"Wired Lace"



40880246
"Flat Small Valley"



40880239
"Loop"

*Special order item.

Please contact us for minimum order quantities.

All Items on this page available in the following finishes/metals:

SO - Sterling Silver Plated CP - Solid Copper GB - Solid Brass

We do custom work!
Contact us for a quote!

www.AmateStudios.com
handmade@AmateStudios.com

© Copyright Amate Studios 2005-2016
All rights reserved

CUFFS



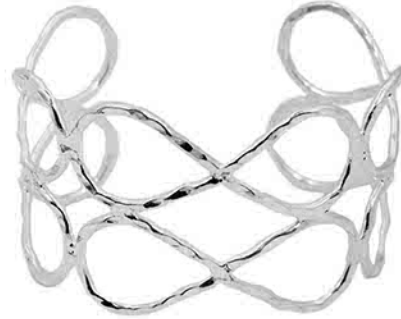
Cuff Style #26



Cuff Style #27



Cuff Style #37



Cuff Style #38



Cuff Style #41



Cuff Style #36



Cuff Style #39



Cuff Style #40

**All Items on this page available in the following finishes/metals:
SO - Sterling Silver Plated CP - Solid Copper GB - Solid Brass**

We do custom work!
Contact us for a quote!

www.AmateStudios.com
handmade@AmateStudios.com

© Copyright Amate Studios 2005-201
All rights reserved

p.46



Cuff Style #28



Cuff Style #29



Cuff Style #30



Cuff Style #31



Cuff Style #32



Cuff Style #33



Cuff Style #34



Cuff Style #35

**All Items on this page available in the following finishes/metals:
SO - Sterling Silver Plated CP - Solid Copper GB - Solid Brass**

We do custom work!
Contact us for a quote!

www.AmateStudios.com
handmade@AmateStudios.com

© Copyright Amate Studios 2005-201
All rights reserved



*Cuff Style #9



*Cuff Style #10



Cuff Style #11



*Cuff Style #12



*Cuff Style #13



*Cuff Style #14



*Cuff Style #15



Cuff Style #42

*Special order item.

Please contact us for minimum order quantities.

**All Items on this page available in the following finishes/metals:
SO - Sterling Silver Plated CP - Solid Copper GB - Solid Brass**

We do custom work!
Contact us for a quote!

www.AmateStudios.com
handmade@AmateStudios.com

© Copyright Amate Studios 2005-2016
All rights reserved



*Cuff Style #1



*Cuff Style #2



*Cuff Style #3



*Cuff Style #4



*Cuff Style #5



*Cuff Style #6



*Cuff Style #7

**All Items on this page
available in the
following finishes/metals:
SO - Sterling Silver Plated
CP - Solid Copper
GB - Solid Brass**

*Special order item.

Please contact us for minimum order quantities.

We do custom work!
p.49 Contact us for a quote!

www.AmateStudios.com
handmade@AmateStudios.com

© Copyright Amate Studios 2005-2016
All rights reserved

Pendants & Post Earrings



*Pendant FPN-0636
*Earrings FEP-0663



*Pendant FPN-0636-T
*Earrings FEP-0663-T



Pendant FPN-0630
Earrings FEP-0650



*Pendant FPN-0630-T
*Earrings FEP-0650-T



*Pendant FPN-0634
*Earrings FEP-0659



Pendant FPN-0634-T
Earrings FEP-0659-T



Pendant FPN-0631
Earrings FEP-0651



Pendant FPN-0631-T
Earrings FEP-0651-T

**All items on this page
available in the
following finishes/metals:
SO - Sterling Silver Plated
CP - Solid Copper
GB - Solid Brass**

All items are shown approximately
actual size

We do custom work!
Contact us for a quote!

www.AmateStudios.com
handmade@AmateStudios.com

© Copyright Amate Studios 2005-2016
All rights reserved

p. 50

Pendants & Post Earrings

By Amate Studios™



Pendant FPN-0632
Earrings FEP-0652



Pendant FPN-0632-T
Earrings FEP-0652-T



Pendant FPN-0639
Earrings FEP-0657



Pendant FPN-0639-T
Earrings FEP-0657-T



Pendant FPN-0643
Earrings FEP-0661



Pendant FPN-0643-T
Earrings FEP-0661-T



*Pendant FPN-0640
*Earrings FEP-0660



*Pendant FPN-0640-T
*Earrings FEP-0660-T

All Items on this page available in the following finishes/metals:
SO - Sterling Silver Plated
CP - Solid Copper
GB - Solid Brass

*Special order item.
 Please contact us for minimum order quantities.

All items are shown approximately actual size

© Copyright Amate Studios 2005-2016
 All rights reserved

Amate Fashion™

We do custom work!
 p. 51 Contact us for a quote!

www.AmateStudios.com
handmade@AmateStudios.com

Pendants & Post Earrings



*Pendant FPN-0635
*Earrings FEP-0655



*Pendant FPN-0635-T
*Earrings FEP-0655-T



*Pendant FPN-0642
*Earrings FEP-0662



*Pendant FPN-0642-T
*Earrings FEP-0662-T



Pendant FPN-0641
Earrings FEP-0658



Pendant FPN-0641-T
Earrings FEP-0658-T



Pendant FPN-0633
Earrings FEP-0664



Pendant FPN-0633-T
Earrings FEP-0664-T

**All Items on this page
available in the
following finishes/metals:
SO - Sterling Silver Plated
CP - Solid Copper
GB - Solid Brass**

*Special order item.
Please contact us for minimum order quantities.

All items are shown approximately
actual size

We do custom work!
Contact us for a quote!

www.AmateStudios.com
handmade@AmateStudios.com

© Copyright Amate Studios 2005-2016
All Rights Reserved



Amate

Fine Jewelry™



Amate

Fine Jewelry™

A ready-to-wear fine jewelry line. Featuring the designs of Armondo Barry, the pieces are both elegant and modern. Choose from pendants, bracelets, earrings and cufflinks. This collection is hand fabricated in sterling silver.

TM

COPYRIGHT© 2016 ARMONDO BARRY

WWW.AMATESTUDIOS.COM

Crosses & Rings

(Size 6-11)



SSFJR002



SSFJR003



SSFJR006



SSFJR004



SSFJR001



SOFJB009



SSFJ007

SOFJ008



SOFJB010

SSFJB010



SOFJB012

SOFJB012

We do custom work!
Contact us for a quote!

www.AmateStudios.com
handmade@AmateStudios.com

© Copyright Amate Studios 2005-2016 p.53
All rights reserved



H2O-7038
(2 1/8 x 5/8")

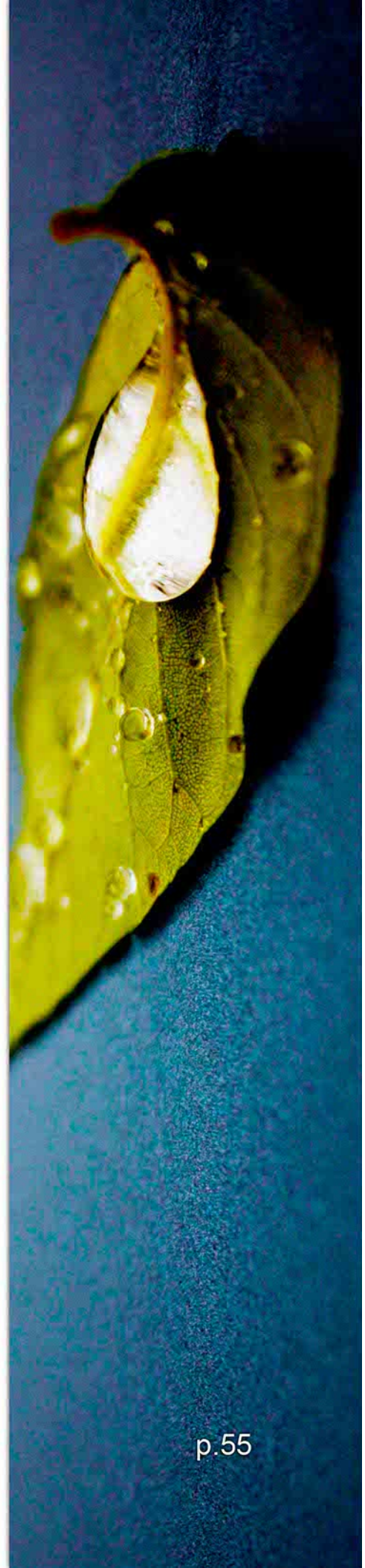


H2O-7003
(2 1/4 x 1/2")

SIDE
VIEW

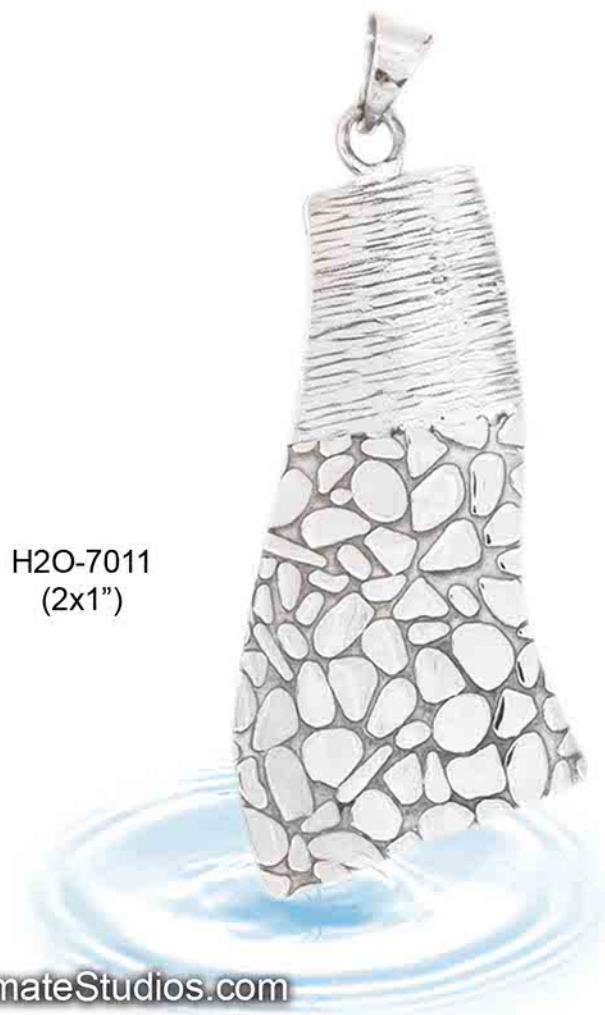


H2O-7008
(1 1/4 x 1/2")





H2O-7012
(1 1/4 x 1/2")



H2O-7011
(2x1")



H2O-7025
(5/8")



H2O-7024
(5/8")



BACK



H2O-7028
(5/8" top,
adjustable ring)



H2O-7027
(5/8")



H2O-7026
(5/8")



BACK



H2O-7029
(5/8" top,
adjustable ring)



H2O-7040
(1 1/4 x 1/2")



H2O-7039
(1 1/2 x 7/8")

H2O-7079
(8 x 1 3/4")



H2O-7062
(8 1/2 x 1/2")



H2O-7063
(8 1/2 x 1/2")



H2O-7052
(8 1/2 x 1/2")



H2O-7055
(8 1/2 x 1/2")



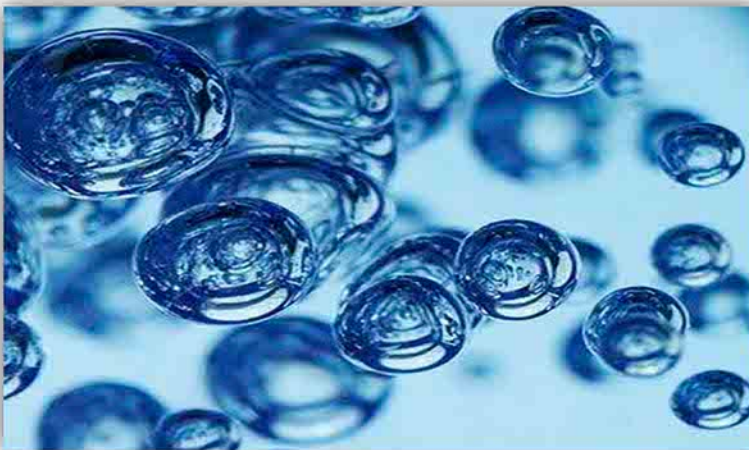


H2O-CUFF-#26



H2O-CUFF-#27

H2O-CUFF-#28



H2O-CUFF-#29



H2O-CUFF- # 21

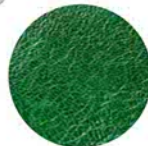


H2O-CUFF- #22

Includes interchangeable leather lining



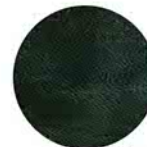
Includes all colors shown



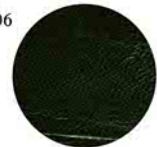
ALL-0506



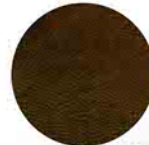
ALL-0906



ALL-0806



ALL-0106



ALL-0206



H2O-CUFF- # 23



STERLING
SILVER



H2O-7030
(1 3/4 x 3/4")



H2O-7031
(2 x 3/4")



H2O-7032
(1 1/2")



MIXED
METALS

H2O-7034
(2 x 3/4")



H2O-7033
(1 3/4 x 3/4")





H2O-7084
(1 1/2")



H2O-7058
(1 1/4")



H2O-7059
(1 1/4")





H2O-7068
(1 3/4")

Available Colors:



WHITE



SEA GREEN



MULTI



AQUA

When ordering, please indicate the color of crystal drop you would like.

Crystal drop colors may vary some.



H2O-7067
(2 1/2")



H2O-7070
(1 1/2")



H2O-7072
(1 1/2")



Dichro not included,
sold separately



H2O-7074
(1 1/2")





H2O-7071
(1 1/2")



Dichro not
included,
sold separately



H2O-7073
(1 1/2")



H2O-7075
(1 1/2")



H2O-7082
(8 1/4")



H2O-7081
(1 1/4")



H2O-7041
(7 1/2")

With pearls



With pearls

H2O-7042
(1")



H2O-7050
(1 1/2 x 7/8")



H2O-7049
(1 1/2 x 7/8")





H2O-7022
(1 x 1/2")



H2O-7021
(1 x 1/2")



Faith Based
— Jewelry —



2016
CATALOG



SSCR8003



SSCR8013



SSCR8012



SSCR8001



SSCR8010



SSCR8007



SSCR8004



SSCR8016



SSCR8005



SSCR8011



SSCR8006



SSCR8014



SSCR8002



SSCR8008



SSCR8015



SSFJ8007



SSCR8009

*.925 sterling silver,
includes chain
*Sold in packs of 3
*Made in México

WOOD CROSSES



LWC6061



LWC6065



LWC6070



LWC6067



LWC6064



LWC6066



LWC6069



LWC6071



LWC6069



DWC6063



DWC6062



LWC6068



LWC6066



LWC6067



LWC6064



LWC6065

*Sold in packs of 3 pieces per wood color - *Each cross includes a leather cord
 - *Available in retail packaging or in bulk

*All crosses available in both light and dark wood although only one type is pictured.
 Specify LWC (Light Wood) or DWC (Dark Wood) when ordering.

GUADALUPE



BACK DVNDJ
42X34mm



FRONT



DVNJ3
43X34mm



BACK DVND4 FRONT
32X25mm



BACK DVND3 FRONT
24X17.5mm



DVND3
22X16mm



DVN4
32X25mm



DCNC
43X34mm



DVN2
18X13mm



RVN2
18X13mm



RVN3
24X17mm



EVNP
15x11mm



15X11 BEZEL LENGTH 7.5 INCHES

PVN

ALL ITEMS ARE STERLING SILVER.
PENDANTS ARE MADE WITH REAL DRIED PRESSED FLOWERS.
ALL PENDANTS INCLUDE A CHAIN 24 INCH CHAIN.
PLEASE ALLOW 4 TO 5 WEEKS FOR DELIVERY



1. Order information:

- Opening /re-orders minimum is \$125.00 USD.
- Any order less than \$125.00 will be subject to a \$15.00 small order fee.
- All items must be ordered in lots of 6 pieces/pairs per style and finish (i.e. 6, 12, 24), except where noted
- 2. Prices effective as of January 31, 2015-However, as metal prices move, our prices will be adjusted accordingly.
- 3. All items are individually handmade; therefore, each piece has its own beauty and will vary one to another.
- 4. All products are normally sold without retail packaging, unless requested below.
- 5. Codes for finish types: SO: Sterling silver plate over brass (shiny), GB: solid brass, CP: solid copper, SS: .925 sterling silver, SM: Sterling silver plate over brass (matte), AB: Antique solid brass.
- 6. Items pictured in catalog may be available in additional finishes other than the one shown.
- 7. An (*) on this page denotes a required piece of information needed to create your wholesale account.
- 8. Custom and Special Orders (non-Inventory items) have minimum amounts per style/finish per order and a 50% non-refundable deposit due at the time order is placed. Once an item is approved, lead times average 4-6 weeks. For new custom orders there is a \$40.00 one time set-up charge.
- 9. Orders for .925 Sterling Silver have a 24 piece minimum, per style and a 50%, non-refundable deposit due at the time of order. Sterling has \$300 minimum order amount and prices listed are based upon a \$16 /ounce silver price. Prices will be adjusted according to the daily silver price on the day your order is placed.

Ship To: Commercial / Residential (Choose One) *Bill To:

Mark if billing & shipping address are the same

*Contact Name: _____ Name: _____
 *Company: _____ Company: _____
 *Street: _____ Street: _____
 *City: _____ City: _____
 *State/Province: _____ *Zip: _____ State/Province: _____ Zip: _____
 *Phone #: _____ Country: _____
 Fax: _____ Phone: _____
 *Resale/Tax ID# _____ Website: _____
 *Email: _____

Payment Information

Payment Type: Visa / Mastercard / Discover / Check
 CC # _____
 Exp. _____ 3 digits: _____
 Name on Card: _____

Product and Order Information

May we split ship / backorder? Yes / No
 Would you like retail packaging? Yes / No
 Would you like Barcodes? Yes / No

Subtotal from all pages before Shipping	_____	\$ _____
Notes:	(Continental USA Only) Shipping & Handling	_____
	Add 7.5%	_____
	Grand Total with Shipping	\$ _____

Signature _____ Date: _____
 Order Taken By: _____ Rep. Name: _____

Custom order form for Jewelry Design Services

Name: _____ Address: _____
Cell Phone: _____ City: _____
Email: _____ State: _____ Zip: _____

When ordering a custom piece there are several things to think about, therefore we have created a process to address these steps. They may not be totally inclusive so please add more information where you feel the need to explain in better detail. Custom orders may take up to 4 - 6 weeks for your once project is approved --Please CIRCLE all items that apply to your custom piece. Please create only one custom piece per form.

Step 1. Bezel Shape and Size

Shape: Square Oval Rectangle Circle Star Heart Other: _____
Internal dimensions of the bezel: Tall: _____ Wide: _____ Inches or Millimeters

Step 2. Bezel Depth inside (in millimeters)

Flat 2 3 4 5 6 Custom: _____

Step 3. Bezel Wall Thickness (Top view)

Approximate sizes(choose only one): .5-1mm 1-1.50 1.5-2.0 2.0-2.5

Step 4. Type of Finish of Final Product

.925 Sterling Silver / Silver Overlay i.e. Plated / Solid Copper / Solid Brass / Other _____

Step 5. Decide the type of Jewelry piece to make your bezel into.

A) Ring (Choose only one)

Adjustable at top of finger

Adjustable at bottom of finger

Fixed size 4 5 6 7 8 9 10 11 12

B) Pendant (Choose one type and one Position. If using our samples select gauge and Loop #.)

Type of Bail/ Loop: (Circle / Band Number: _____ Letter: _____) Custom: _____

Position of Bail: Center or Corner / Top / Bottom / Top and Bottom / Vertical or horizontal

C) Earring

Dangle / Post (if the shape is a rectangle or other long shape it will hang vertical)

D) Broach style (open and close with a circle closure at the tip of the sharp end)

Hanging position of the bezel: Horizontal / Vertical

E) Lapel Pin (Straight pin with a backing. I.E. Tie tack style pin) will hang vertical.

F) Cuff Links

G) Cuff Bracelet

Direction of the Bezel: Down wrist with arm / Across the wrist(recommended direction)

H) Linked Bracelet

How Bezels are connected: On sides, like Base Elements / Underneath, like Designer's Collection

I) Ribbon Slides

Position of the slides: Sides of the Piece / Under the Bezel

J) Button Shank on the bottom of the bezel(U shaped metal at bottom to connect button)

Step 6. Totally Custom Piece w/ an Attached drawing

For this please add a detailed drawing with dimensions of your design.

Internal use only:

Date order received:

Po #

Date submitted/faxed:

Invoice number:

Date product received:

Drawing attached:

yes / No

Date product delivered to customer:

Store #

Order Taken by:

Phone 602-330-2862

Email: handmade@amatestudios.com

www.AmateStudios.com



Amate Studios

P.O. Box 4721

Mesa, AZ 85211

Contact Person:				Phone #	Date:
Company Name:					P.O.#
Line #	Finish Type	Item #	Quantity	Price Per Piece/Pair	Total Cost
1					
2					
3					
4					
5					
6					
7					
8					
9					
10					
11					
12					
13					
14					
15					
16					
17					
18					
19					
20					
Total \$ for this Page					

Note: This page and all pages of the order should be stapled to the front customer information page. The total from all pages should be noted in the notes section of the information page and then totaled up. I.E. Page 1 - \$xxx.xx Page 2 - \$xxx.xx

Order taken by _____

Page _____ of _____

Initials _____