



**Loving God**  
**Loving People**  
**Transforming Communities**

# 1. BEC'S PASTORS

---



## Paul Rogers - Lead Pastor

Paul became a Christian at university and experienced dramatic life transformation, and so a desire was planted to give his life to sharing the hope we have in Christ, as he experienced that the gospel is true and really does work! Following eleven years serving in London at Westminster Chapel in youth and community work, Paul and his lovely wife Ali were called to Rugby in 2008, along their three (now grown-up) children. They have been privileged to minister at BEC, sharing with the church as they do a common passion for gospel proclamation; to build Bible-based lives among folks in local communities; to encounter more of God's presence by His Spirit; to set men, women and young people free to be all they can be in God; and for living an adventure, and doing life with friends along the way! Long may it continue!



## Alan Stapleton - Pastor

Alan was working in industry but felt God calling him to join the team at BEC as the Youth worker. He soon became the Youth Pastor and worked towards growing the youth ministry and developing other youth workers. He then moved into the role of Ministries Pastor and now oversees all the ministries here at BEC as well as instigating and running the 'Legacy Leadership' development programme for leaders in the church.

Alan is married to the lovely Sam and they have 2 sons, Dan & Josh. In his spare time he loves spending time with his family and friends, climbing mountains, keeping fit at the gym and taking part in various running events and triathlons.

He is passionate about seeing people live for God and achieve their potential.

## 2. BEC'S DNA, CHARACTER & ETHOS

---

*'The Spirit of the Sovereign Lord is on me,  
Because the Lord has anointed me to proclaim good news to the poor.  
He has sent me to bind up the broken-hearted,  
to proclaim freedom for the captives and release from darkness for the prisoners,  
to proclaim the year of the Lord's favour and the day of vengeance of our God,  
to comfort all who mourn, and provide for those who grieve in Zion –  
to bestow on them a crown of beauty instead of ashes,  
the oil of joy instead of mourning,  
and a garment of praise instead of a spirit of despair.  
They will be called oaks of righteousness,  
a planting of the Lord for the display of his splendour.'*

These verses from Isaiah 61:1-3 are right at the heart of what we believe God has called us to as a church. By the anointing of the Holy Spirit, we look to proclaim the good news of Jesus Christ, anticipating Kingdom transformation as we do. We see our primary task in this to be the raising up and releasing of passionate and radical disciples of Jesus – men, women and young people who you could place anywhere and see them 'change the geography around them'. As such, we are not looking to gather a crowd, or build a name for ourselves or our church, and we recognise that, at times, this journey together will be costly and will call for thought-through commitment.

However, we do believe that this is what Biblical discipleship looks and, as such, is the call on us as a community of faith, and is the need of the hour to bring healing to our very broken world. If you share this vision for local church, we would love to have you journey with us!

# 3. MEMBERSHIP

---

## WHY WE HAVE A FORMAL MEMBERSHIP PROCESS AND STATEMENT

1. A covenant commitment to a local church body is consistent with both the spiritual reality of our connection with God's world-wide family, and the human need for meaningful relationships and belonging.
2. By entering into membership, we are aligning ourselves with the church's vision and values, and committing ourselves to entering into a level of relationship which gives permission to speak into one another's lives and journey with one another in discipleship.
3. Membership clarifies the expectations of what mutual commitment looks like: the privileges and the responsibilities. It allows the church to know that people in key ministry positions are saved, committed to living a godly lifestyle and in fellowship with other Christians.
4. Being received into membership at the front of the church congregation is a public statement of that mutual commitment- as baptism is, of our commitment to Christ, and as marriage is, of our commitment to a life partner. This makes the commitment between the church and the individual something that is intentional, witnessed and accountable.
5. In serious circumstances where a member's actions are sinful and harmful, the church's leaders have the authority to redemptively challenge, care for and restore the individual, and to protect the rest of the church body.

We take as our primary motif for membership the idea of 'church as *family*', and as with any family, there are both privileges and responsibilities to consider.

## THE PRIVILEGES OF CHURCH MEMBERSHIP

We commit to loving care at BEC, and work hard at our pastoral care; equally by becoming a member, you are inviting a loving accountability, asking fellow brothers and sisters to speak into your lives for your maturing as a disciple; and we invest in the discovery and release of individuals' God-given gifting. In some of our ministries, helping out by non-members is welcomed but leading is a privilege of membership.

## THE RESPONSIBILITIES OF CHURCH MEMBERSHIP

As members, we commit to connection with, and participation in, one of our life groups, believing small groups to be Biblical and one of the main places we build friendships, and develop discipling relationships. Similarly, we commit to corporate gatherings, both Sunday services and members' family meetings. At these we hope to encounter God as a whole body, discern His will together and respond corporately in worshipful obedience. Serving the church body in a way that fits with the presenting needs, and with our calling and gifting, is another vital part of belonging to that body. Finally, we look to contribute to the family finances in a considered way and on a regular basis.

## THE PROCESS

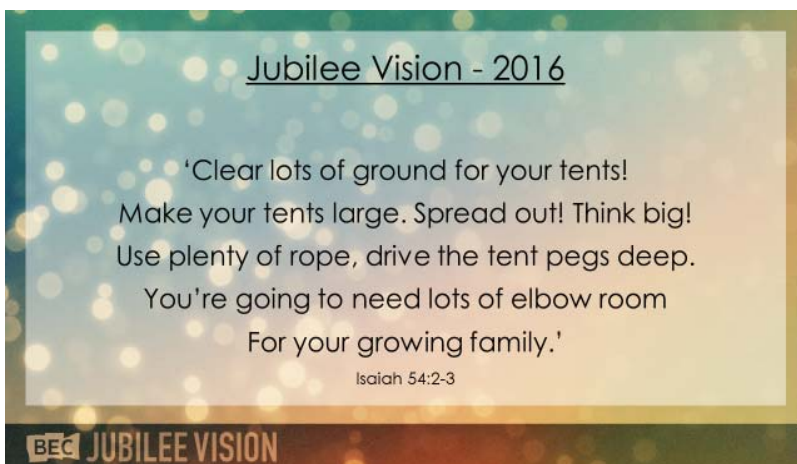
1. Spend 3-6 months in a Life Group and coming regularly to Sunday services, in order to get to know the church and be known. Prayerfully decide whether BEC is the place to which God wants you to belong and commit.
2. Have an initial talk about membership with your Life Group leader to find out what membership entails, and to be recommended for the next stage of the process, which is a chat with a senior leader in the church (such as a Cluster leader or elder).
3. Attend a Membership at BEC evening, to find out more about membership from a pastor.
4. Read the Statement of Faith in BEC's Constitution, to see if you can agree to it (you can obtain a copy of the Constitution from the church office).
5. Be accepted into membership during a Sunday service.

# 4. BEC'S VISION AND VALUES



## BEC's Mission Statement

This is God's call to us: what we are to become and do, in our upward, inward and outward relationships.



## BEC's Vision

**Getting Bigger** - growing in numbers, but working hard at the small stuff.

**Growing Deeper** - putting down deep roots in our pastoral care, discipleship and leadership.

**Going Further** - reaching out beyond our local area, and even beyond our nation.



## BEC's Core Values

These are what we are about in everything that we do, in order that every member of BEC is following Jesus and making new followers of Jesus.

# 5. BEC – THE JOURNEY SO FAR

---

## A BRIEF HISTORY

In 1974 God called a few families to be true to his word, break camp and move out from where they were, in the beginnings of what was to become Bilton Evangelical Church. Led by the first two elders Terry Wilson & Bill Young, from the start and to date God's hand has been on the fellowship leading and guiding the way forward. The first meetings were in a home with about thirty people, then quickly moved to a local school in Bilton. The current building- originally the village school- first became available as a youth centre, and then after the first refurbishment in 1979 became BEC. Whilst in the school our first Pastor Ross Ingram (with his wife Margaret) led us through our early days. They were Canadians and returned to Canada after three years where Ross became the principal of Canada's largest Bible Seminary. We have since had four Pastors.

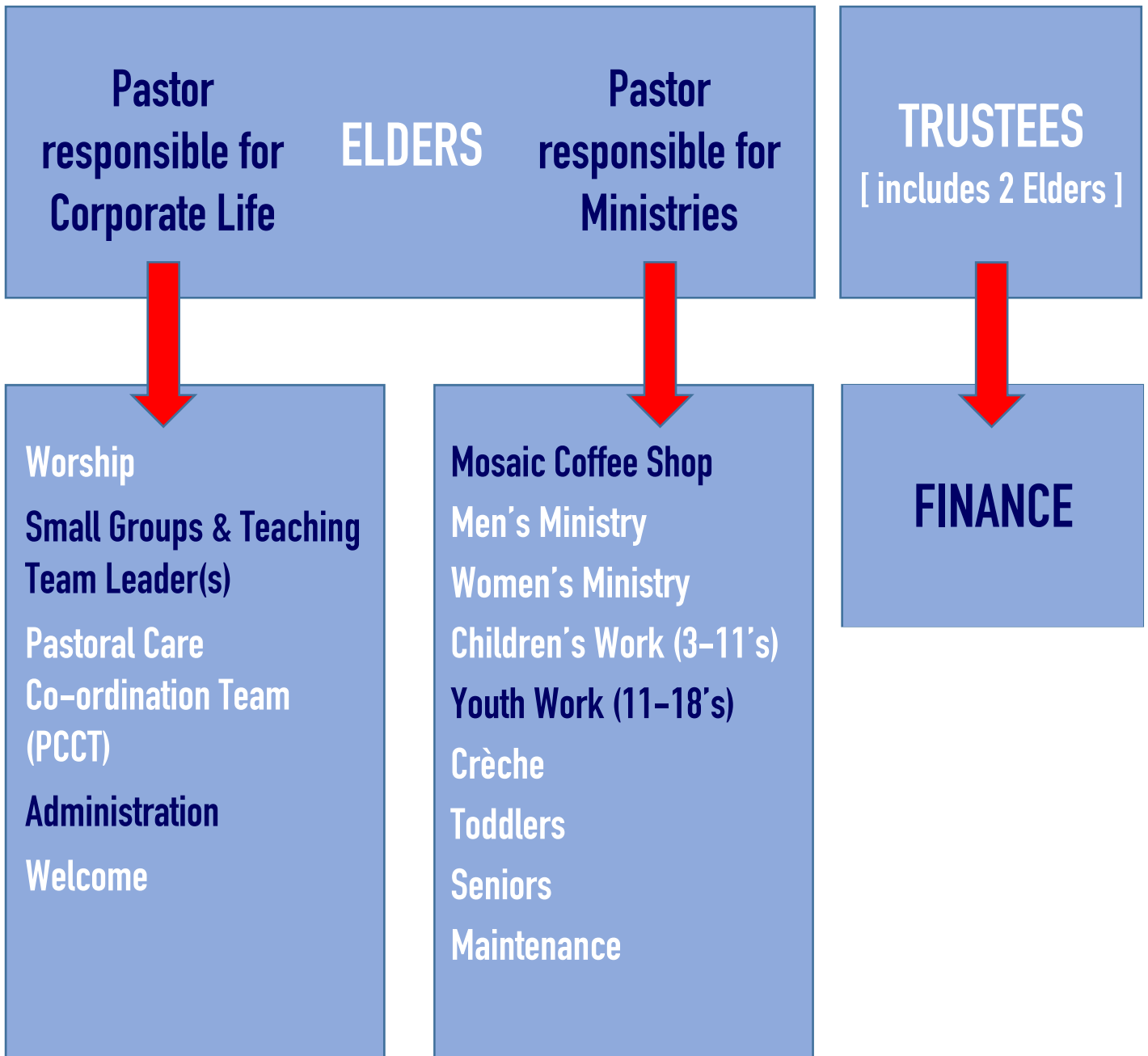
Following clear prophecies given to the church, BEC continued to grow, and following two more building expansions we came to have our current building.

Looking back over the past forty five years it has been an amazing journey with God at the helm. Mosaic Coffee shop was opened in 2009 as an outreach drop in for the local community and many have been cared and prayed for through its work, with some coming to know the Lord. There have been so many instances of divine guidance and intervention. Through it all, BEC has tried to remain true to the original calling: to stay local and Bible believing, with God at the centre, while loving one another and reaching out to the local community.

If you would like to know a more detailed history, and hear examples of how we have been led by God, going through ups and downs, yet knowing his protection and guidance, then please ask Steve and Mary West (who lead the Welcome Team and are on the door most Sunday mornings).

# 6. LEADERSHIP STRUCTURE

---



Writing in dark blue indicates that there are paid staff in that area.



# 7. LIFE GROUPS AND CLUSTERS

---

At BEC we think that in order to really experience Christian life at its fullest we need the support, accountability, challenge, fun and encouragement of living in close fellowship. We see our Life Groups as an important part of our discipleship, and so all members are expected to be committed to a group of fellow Christians and join together in growing more like Christ in terms of our relationship with God, one another and the world outside the church. Our purpose is to become mature disciples who make disciples.

Our Life Groups encompass a variety of activities and styles, which give each of them a character of their own, but they all seek to maintain a healthy balance between the three key elements of a Life Group:

1. Experiencing LIFE in God. Developing a deepening friendship with God through Bible study, prayer, worship, and using our spiritual gifts to minister to one another.
2. Doing LIFE with each other. Becoming a loving community through being real with one another, spending time together in and out of meetings, and serving and caring for one another.
3. Bringing LIFE to communities. Praying and supporting one another in our individual mission, and finding a joint missional purpose to focus on.

Each of our Life Groups is part of a cluster of groups looked after by a Cluster Leader. The Cluster Leaders are looked after by the Small Groups and Teaching Team Leader(s), which is a full-time paid role.

To join a Life Group fill in a contact card which you will find on the Life Group information board in the church foyer, or contact:

[smallgroups-teaching@becchurch.org.uk](mailto:smallgroups-teaching@becchurch.org.uk)

You need to be a member at BEC to lead a Life Group or cluster, but anyone can be part of a Life Group.

## 8. SUNDAY SERVICES

---

The aims of all our services are to glorify and encounter the living God, through his word the Bible, through prayer and sung worship and through the exercising of the gifts God has given for the building up of his church. There is an opportunity to give financially towards the work of the church, but there is no obligation for visitors to give.

Having said that, there are distinctly different “feels” to the services at BEC:

1. The first morning service is more contemplative and reflective. There is no youth or children’s work during this service.
2. The second morning service has more of a family feel, with an informal lively atmosphere. The youth and children are sometimes in for part or all of the service. When they are in for the whole service, we call it a “Family Service” and attempt to make our worship accessible for all ages.

On occasion, we have a guest speaker and combine the first and second services in a “BEC Together” service, in order to spare the speaker from preaching three times in a day!

3. In the evening service we are able to make more space to hear from God and respond to him. Some of our young adults help shape this service to have a more contemporary feel with which people new to church might feel comfortable.

We celebrate Communion at least once a month in the morning services and at least once a month in the evening service.

# 9. MINISTRIES AT BEC

---

We have a wide range of ministries at BEC offering various activities for all ages. If you wish to serve in an area, please contact [alan@becchurch.org.uk](mailto:alan@becchurch.org.uk) or speak to the ministry leader.

## YOUTH

The church has a full-time youth worker. There are mid-week activities including a youth club, after-school club, youth life groups, worship nights and social events. There is also a Sunday programme for our young people with teaching in a modern, engaging and inclusive style, and on Sunday evenings the young people are able to chill out at church members' homes.

The young people are given opportunities to serve in the local community. Every year there is a youth weekend away and various summer camps where the young people can get away, relax, have fun and find out more about Jesus.

You need to be a member at BEC to lead any of our youth groups or activities, but anyone can help provided they have completed the Disclosure and Barring Service (DBS) process.

## CHILDREN

There are various activities for children at BEC. During the week they can join Ozone, a Friday night club for fun and games, activities and a small talk at the end. There is also a children's life group for years 5-6 which meets mid-week where the children can learn more about Jesus and their own faith in a lively and engaging way.

On Sunday mornings there are different activities for different age groups ranging from toddlers up to year 6's. The children often stay in the service for the worship element and then leave to go to their own groups. Occasionally the children have a fun-packed morning at 'Splash' where they all worship and learn together. Once a year the children have the opportunity to go a Christian camp at 'The Oaks' which is an adventure-based weekend.

You need to be a member at BEC to lead any of our children's groups or activities; but anyone can help provided they have completed a DBS.

## CRÈCHE

On a Sunday morning at our family service there is a crèche provided for babies. Parents are encouraged to leave their children there and re-join the service. You can also listen to the service whilst in the crèche room or in the foyer area at church if you need to stay out of the main hall for any reason.

You need to be a member at BEC to lead the crèche on a Sunday, but anyone can help provided they have completed a DBS.

## TODDLERS

This group takes place mid-week on a Wednesday morning (term-time only) and is for anyone with babies, toddlers and pre-schoolers. It aims to provide a warm and safe environment for children to socialise and play, and to give a friendly welcome to parents and carers. The morning includes a craft activity, some singing and a Bible story time, and drinks and snacks are also provided. The group has a clear missional purpose of building relationships with parents and carers in the local community.

You need to be a member at BEC to lead our toddlers group, but anyone can help provided they have completed a DBS.

## SENIORS

There is a large and lively ministry at BEC among those who are more senior in years! They welcome everyone no matter where they are in their faith journey. Monday Club meets twice a month, and in a friendly atmosphere they enjoy a good sing of favourite hymns and songs. There are often guest speakers who bring interesting talks on a variety of subjects, often illustrated with visual presentations. Prayer and refreshments are also important elements of their meetings. The first session each month is preceded by a full cooked meal (there is a small charge for this). There is also an annual summer day trip.

You need to be a member at BEC to lead our seniors work, but anyone can help.

## PRAYER MINISTRY

We believe the Holy Spirit desires to comfort, heal, refresh and give direction to the body of Christ, and it's our longing to see Him working among us. As well as encouraging BEC members to pray for one another, we also have a prayer ministry team that seek to serve in our Sunday services by offering prayer to those who wish to receive it.

You need to be a member at BEC to lead and serve in this area.

## **WORSHIP**

In our worship we aim to enable people to praise, glorify and encounter God. The team faithfully serve our Sunday services by playing, singing, and providing audio visuals and sound. They often help out at funerals, weddings and other special events. Our worship team leader regularly gets the team together for food, prayer and training.

You need to be a member at BEC to lead and serve in this area.

## **WELCOME AND STEWARDING**

At BEC we have a welcome team who are on the doors most Sunday mornings to greet people as they arrive at church. They are there to help newcomers with any questions they might have, and to introduce them to members of the church. There are also stewards available to show you to your seat and help out should you need it.

You need to be a member at BEC to be on the welcome team, but anyone is free to serve as a steward.

## **WOMEN**

The women's ministry at BEC is there to provide opportunities for women to meet together for some fun, sharing, and support for one another as well as giving opportunity to reach out to others. There is a regular early Saturday morning breakfast, and occasionally there is a later Big Breakfast where we invite a speaker to come and share with us.

In alternate years there is a weekend away with plenty of opportunity for women to relax, to find time and space to chat to those they don't normally see, to be inspired, to share, to be prayed for and to be encouraged to keep going with their faith journeys.

You need to be a member at BEC to lead our women's work, but anyone can help.

## **MEN**

Our men's ministry at BEC meets once a month on a Saturday morning. They share a full English breakfast together and often have an interesting speaker. Occasionally there is a town-wide evangelistic event where men can invite work colleagues, friends and neighbours along. A group of men usually brave it at an annual event

called 'The Gathering' where they camp in a field near Swindon and enjoy worshipping alongside 1,000 other men!

You need to be a member at BEC to lead our men's work, but anyone can help.

## **BEC WOODLANDS**

There is another BEC community which meets in our building on Cymbeline Way on the Woodlands estate. They aim to reach out to others with friendship and with the gospel, and to the residents of that estate in particular. Each month they have a mid-week 'Songs of Praise' meeting which everyone is welcome to attend. They also hold a worship service on some Sunday afternoons, which is also open to everyone.

You need to be a member at BEC to lead our work at Woodlands, but anyone can help provided they have completed a DBS.

## **MOSAIC COFFEE SHOP**

BEC's coffee shop opposite the church building on Main Street is an outreach ministry which aims to be at the heart of the Bilton community. It is staffed by a manager and two supervisors, and a whole host of willing volunteers (from the church and the local area). The vision was for a coffee shop in the village where the community could meet in a relaxed, welcoming and secure environment and enjoy a great quality cup of coffee. The coffee shop enables the church to run community based projects (like the "Light and Shade" group who spend time chatting over colouring and journaling activities) and provides the opportunity to understand and address practical, emotional and spiritual needs within our community.

You need to be a member at BEC to be employed at Mosaic, but anyone can volunteer to help.

# 10. PASTORAL CARE

---

We want every member to feel known and cared for, and to be able to access support if they need it. We believe the best way of doing this is to be in community, and therefore pastoral care at BEC takes place primarily within our Life Groups. This means that everyone has the responsibility to care for one another.

In situations that are more serious we do have a Pastoral Care Co-ordination Team (PCCT), and with a person's permission issues can be referred to the team for confidential help and advice. The PCCT is made up of BEC members who have expertise and qualifications in this area. The lead Pastor has oversight and is kept informed where necessary of ongoing issues.

If you need support, advice or help in accessing external organisations, you can talk in the first place to your Life Group leader(s), but you can also contact the PCCT confidentially via [care@becchurch.org.uk](mailto:care@becchurch.org.uk) (subject to the usual safeguarding guidelines).

# 11. INTERNATIONAL MISSION

---

As a local church we recognise God's heart for all the nations of the world (Gen. 12:3, Psalm 67, Acts 1:8) and how the local church should respond in taking the good news of Jesus Christ where Christ is not known as well as to our near neighbours.

Although we understand that not everybody is called to "go" overseas, our aim is to make the life of the church align with God's grand narrative, recognising we are part of a much bigger picture, and we seek to do this in several ways.

## **Sending**

Over the years BEC has sent out several missionary units to different parts of the world and at present we have Heather Simmons who has been serving with OMF in Lopburi, Thailand since 2009, where currently her primary role within the mission is to help prepare new missionaries to serve in cross-cultural contexts. Ray & Bridget Miller have been serving in Costa Rica as missionaries with Latin Link since 2004 where Bridget, as well as serving the local church is involved in a community development project and Ray is engaged in theological education and preparing Latino missionaries to serve in different parts of the world. Mark and Cheryl Gibson have now returned to the UK in 2015 after 15 years in Burkina Faso with Serving in Mission (SIM). Both Cheryl and Mark work with SIM-UK, Mark serving as area mobiliser (but still involved with work among the Fulani in Burkina), and Cheryl as SIM's TCK (Third Culture Kid) coordinator, supporting mission families with school age children.

## **Supporting**

From early on our missionaries have been supported both prayerfully and financially both by BEC as a church and by different individuals from within the church. Each missionary unit has a prayer support group, and over the years BEC has supported practical projects and sent members across to visit our missionaries in situ.

## **Serving**

Over the years many of our young and older people have served on short term mission trips or in ministries abroad, with organisations such as YWAM, Tear Fund, OM and Operation Christmas Child. Also, for some time BEC has sent teams of young people over to serve the church in Poland by helping run an annual kids' camp, in association with the Charisma Church in Krotoszyn.



## Going Global

Part of our vision is to make cross-cultural ministry part of the church's natural DNA and not just something that a handful of people engage in. We recognise that if God's heart is to see every people group, tribe and tongue under the sun have the opportunity to respond to the gospel (Rev.7:9), then, as a local church, it must also be a part of who we are and what we do, compelled by the love of Christ (2 Corinthians 5:14).

You need to be a BEC member to be sent and supported financially on longer-term mission. Anyone can be- and is encouraged to be- involved in short-term mission projects (financial support from the church would be considered on an individual basis).

# 12. BAPTISM, DEDICATIONS AND BLESSINGS

---

## BAPTISM

Baptism is a biblical principle and a command of Jesus for all believers who have been born again. Therefore at BEC we take baptism seriously and we take responsibility for ensuring that people are ready to be baptised.

We generally baptise people as adults on the basis of their profession of faith. Sometimes we baptise younger people if we are sure they understand the principles behind baptism and that they are making the decision for themselves.

Baptism is primarily about declaration, obedience and representation.

**Declaration:** In getting baptised you are making a public declaration about your Christian faith, your belief in God and desire to follow Jesus.

**Obedience:** You are showing obedience to Jesus - He told his followers to be baptised if they believe in Him.

**Representation:** There is a symbolic representation in the act of baptism - as you go into the water it signifies a dying to the old way of things, and then a re-birth into a Christian life when you come out of the water.

## DEDICATIONS

At BEC we do not practise Christening or child baptism because we believe baptism should be a statement of personal faith. However we are happy to hold dedications at BEC.

A baby or child dedication is a ceremony in which believing parents, the wider family and the church family make a commitment before the Lord to raise that child according to God's Word and God's ways. We also pray for God to bless the child and their family.

## BLESSINGS

As a church we want to bless our wider community. Therefore if someone wishes us to pray for their child and ask for God's blessing on their family we are happy to do so.

If you wish to be baptised, or to have a child dedicated or blessed, please contact the church office.

# 13. FINANCE

---

Giving to the work of God here at BEC is a responsibility for its members, but also a privilege as we get the chance to partner with God in seeing his work being fulfilled in this part of his Kingdom. The constitution of the Church states that members are expected to provide “active support of the church in service and finance as God directs.” However, anyone can give towards the work of the church.

Clearly the church cannot function without finance, which is used to facilitate a number of things including the provision and upkeep of premises, the employment of staff, from the Pastors through to admin support, all of whom fulfil a vital role in the ongoing functionality of the church. Finance is also needed to enable the church to fulfil its mission both in terms of teaching and equipping the local church and in outreach to our communities as well as giving to other areas of mission which are supported by the church.

Finance is largely provided by the members of the church through voluntary giving on a consistent basis. Most of our members give via regular standing order directly to the church bank account but some do still give via weekly offerings, sometimes using a numbered envelope system. Where the giver is a UK taxpayer they are encouraged to give under the provisions for Gift Aid which ensures that the value of the gift is enhanced by a further contribution from HMRC.

The details of what a member gives to the church are known only by the Church Treasurer and Finance Assistants.

Envelopes and gift aid forms can be found in the foyer of the church. For other means of giving contact the office or [finance@becchurch.org.uk](mailto:finance@becchurch.org.uk)

---

BEC has a Constitution and Statement of Faith, if you would like a copy please ask.

We pray that God will confirm to you whether BEC is the right place for you to belong, serve and grow as a disciple of Jesus Christ. If so, we look forward to welcoming you to journey with us as part of our church family.



**loving God, loving people,  
transforming communities**

Bilton Evangelical Church

Office: 14 Main Street, Bilton, Rugby. CV22 7NB | 01788 817326 | [www.becchurch.org.uk](http://www.becchurch.org.uk)

A Private Company No. 7296315; limited by guarantee. Registered Charity No. 1137617