



Burial Gown Pattern (included below) And Sewing Instructions

- 1. Cutting out Fabric:** Cut the Micro 1.5 to 2.5 lbs pattern.

Cut out two fronts (1 of body fabric and 1 of lining fabric) *on fold*.

Cut out 2 mirrored-pairs of backs (1 of body fabric and 1 of lining fabric).
- 2. Embellish:** Decorate front of gown on the body fabric with decorative elements.
- 3. Shoulder Seams:** Pin left and right back to front at shoulder seams with right sides of fabric together.

Stitch and press open. Repeat with lining.
- 4. Stitch body to lining:** Pin Lining to body, right sides of fabric together.

Stitch center-back, leaving a 2" opening for turning inside out later.

Stitch neckline. Stitch sleeve hems together, body fabric to lining.
- 5. Turn inside out:** Clip the inside curve of the neckline, and trim off the center-back neckline corners.

Turn the garment inside out by pulling the back pieces through the shoulders into the front.

Press. Your neckline and sleeve hems are already finished!
- 6. Stitch side seams:** Pin side-seams front to back, right sides of fabric together.

Stitch side-seams, starting at the hem, going up around the underarm, and down to the other hem.

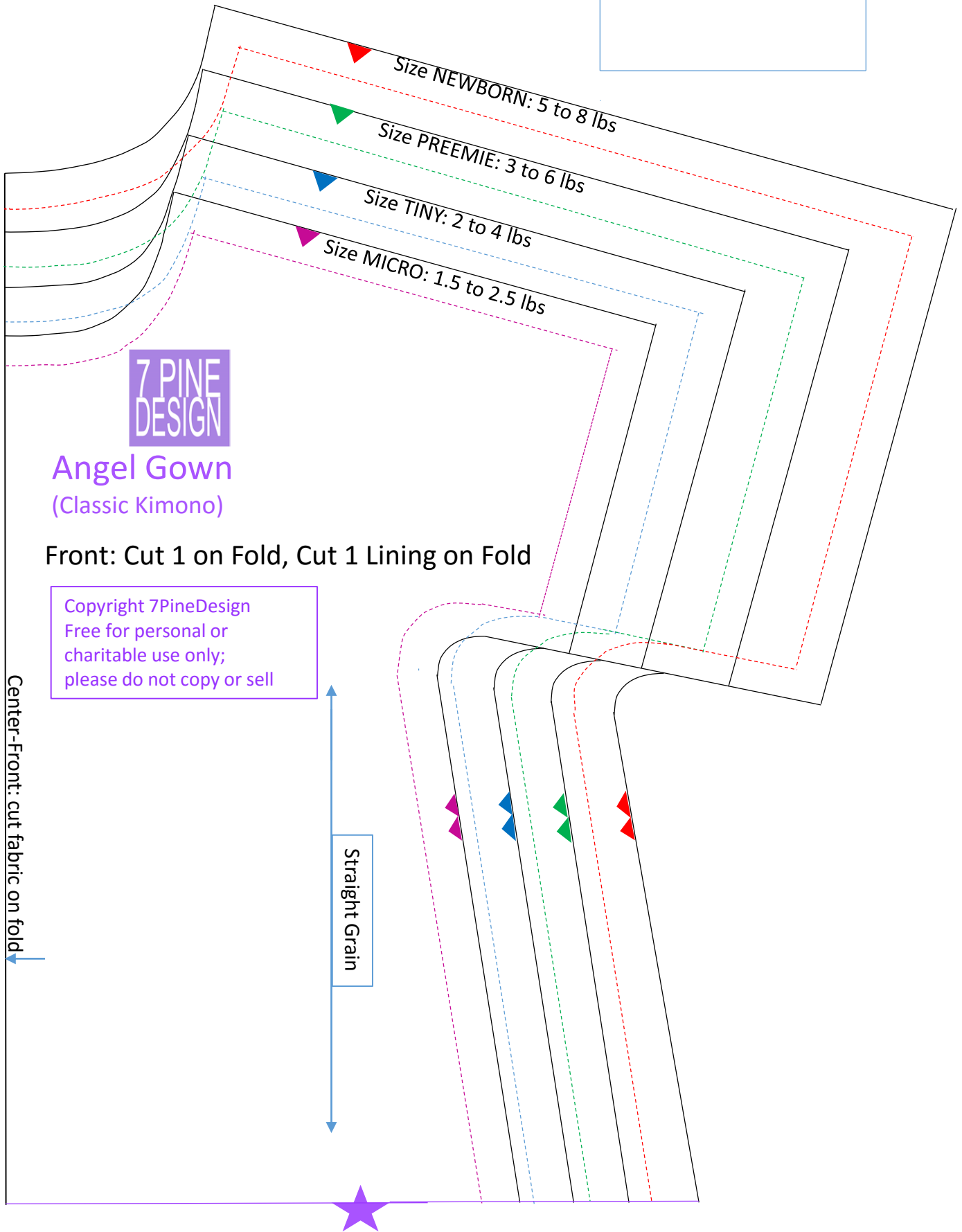
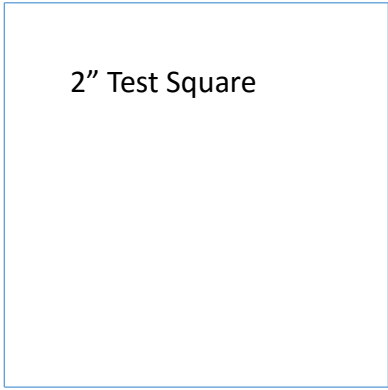
Press the side-seams open after clipping the under-arm curves.
- 7. Hemming:** Pin the hem front to back, right sides of fabric together.

Stitch across the hem, clip off the corners/

Pull the garment inside out, using the opening you left in the center-back seam.
- 8. Finishing:** Final press, then stitch the turn-about opening shut. Stitch on Velcro at center-back.

You will find detailed sewing instructions with pictures at the link below.

<http://7pinedesign.com/charity-sewing-how-to-make-angel-gowns/>



2" Test Square

Size NEWBORN: 5 to 8 lbs

Size PREMIE: 3 to 6 lbs

Size TINY: 2 to 4 lbs

Size MICRO: 1.5 to 2.5 lbs

7 PINE
DESIGN

Angel Gown
(Classic Kimono)

Front: Cut 1 on Fold, Cut 1 Lining on Fold

Copyright 7PineDesign
Free for personal or
charitable use only;
please do not copy or sell

Center-Front: cut fabric on fold

Straight Grain



Angel Gown (Classic Kimono)

Front: Cut 1 on Fold, Cut 1 Lining on Fold

Copyright 7PineDesign
Free for personal or
charitable use only;
please do not copy or sell

Size MICRO: 1.5 to 2.5 lbs



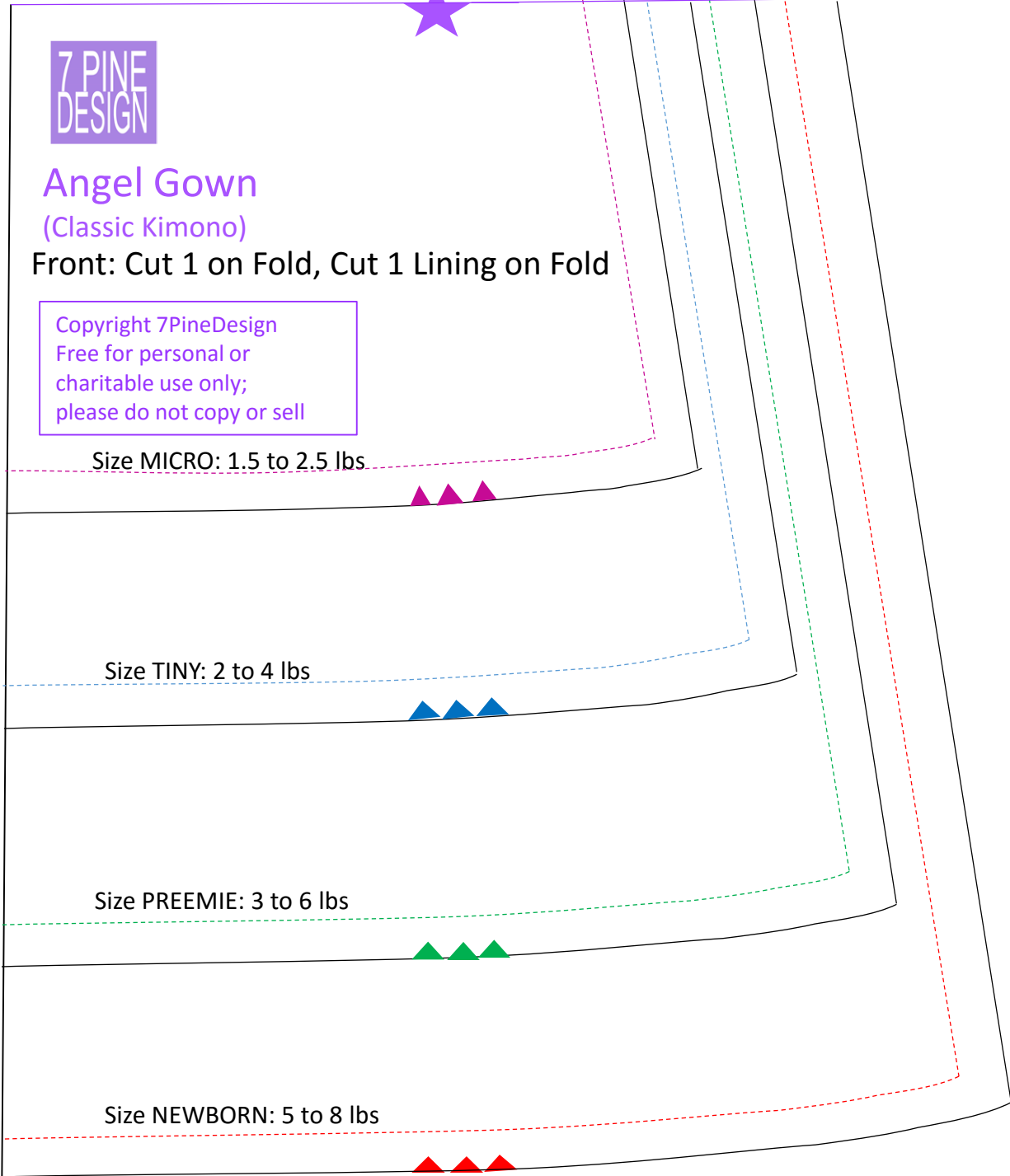
Size TINY: 2 to 4 lbs



Size PREEMIE: 3 to 6 lbs



Size NEWBORN: 5 to 8 lbs

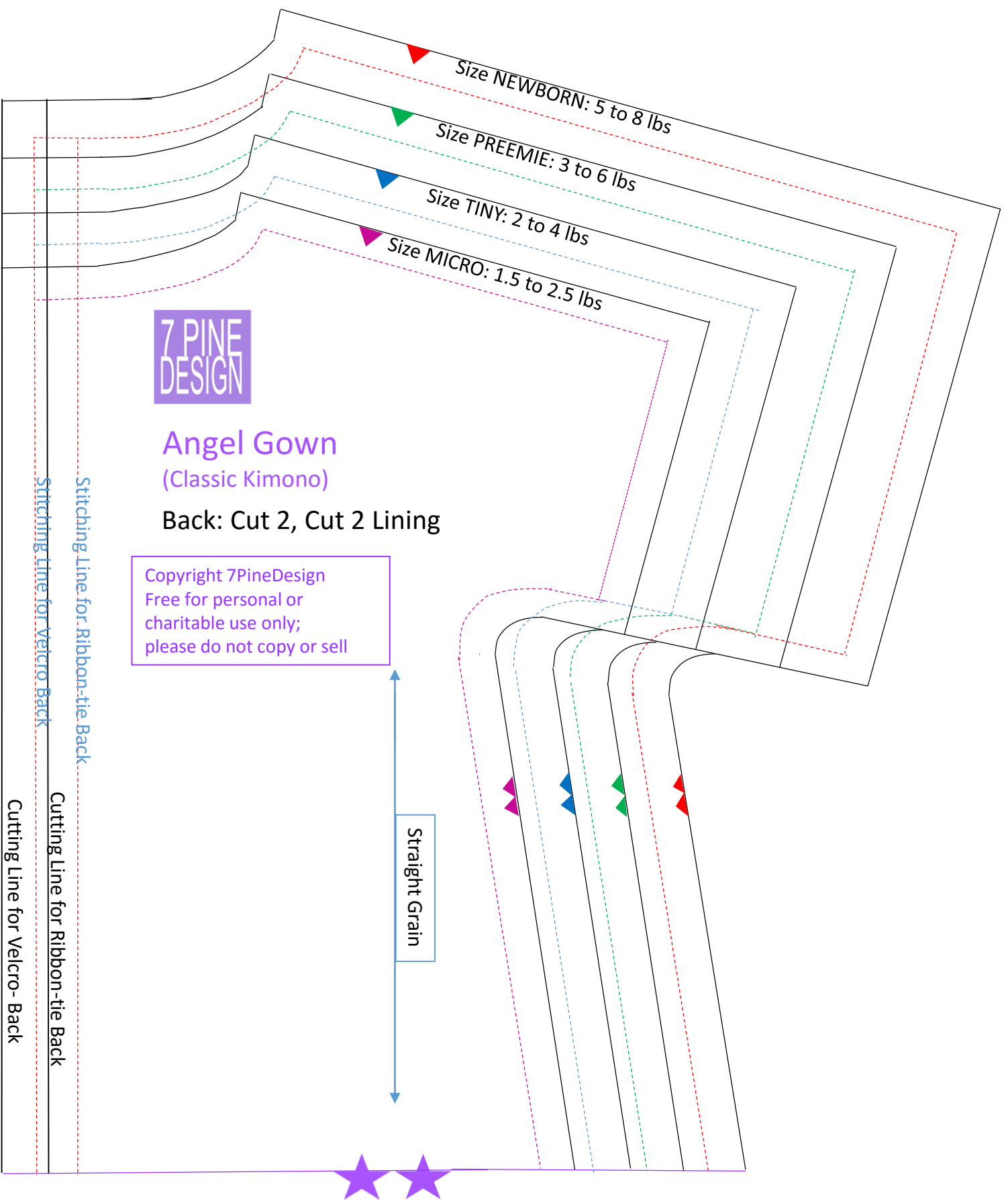




Angel Gown (Classic Kimono)

Back: Cut 2, Cut 2 Lining

Copyright 7PineDesign
Free for personal or
charitable use only;
please do not copy or sell





Angel Gown (Classic Kimono)

Back: Cut 2, Cut 2 Lining

Copyright 7PineDesign
Free for personal or
charitable use only;
please do not copy or sell

Size MICRO: 1.5 to 2.5 lbs

Size TINY: 2 to 4 lbs

Size PREEMIE: 3 to 6 lbs

Size NEWBORN: 5 to 8 lbs

