

In selecting fruit for exhibition, choose specimens that would bring the highest market price. Do not select the largest. Select medium size. In Plate displays, select 5 specimens as nearly alike as possible. Each exhibitor must designate the particular premium for which he is competing in special classes and see that the packages are properly tagged. Single specimens may not be considered or shown in variety classes. Premiums will be awarded only when the exhibit complies with the standards, is meritorious and properly named.

Section 1 -- Fruits

ID No.	Class Description					
1	Apples, any named variety - plate of 5	\$4.00	\$3.50	\$3.00	\$2.50	\$2.00
2	Apples, bushel display*	\$8.00	\$7.00	\$6.00	\$5.00	\$4.00
3	Peaches, any named variety - plate of 5	\$4.00	\$3.50	\$3.00	\$2.50	\$2.00
4	Pears, any variety - plate of 5	\$4.00	\$3.50	\$3.00	\$2.50	\$2.00
5	Pears** Display	\$8.00	\$7.00	\$6.00	\$5.00	\$4.00
6	Pears - standard box	\$8.00	\$7.00	\$6.00	\$5.00	\$4.00
7	Plums, any variety - plate of 5	\$3.50	\$3.00	\$2.50	\$2.00	\$1.50
8	Quinces, any variety - plate of 5	\$3.50	\$3.00	\$2.50	\$2.00	\$1.50
9	Persimmons and Paw Paws***	\$3.50	\$3.00	\$2.50	\$2.00	\$1.50
10	Fruit Display****	\$20.00	\$15.00	\$10.00		

Berries - Fruit bearing canes in vase

12	Blackberry	\$2.50	\$2.00	\$1.50	\$1.25	\$1.00
13	Blueberry	\$2.50	\$2.00	\$1.50	\$1.25	\$1.00
14	Currant	\$2.50	\$2.00	\$1.50	\$1.25	\$1.00
15	Dewberry	\$2.50	\$2.00	\$1.50	\$1.25	\$1.00
16	Elderberry	\$2.50	\$2.00	\$1.50	\$1.25	\$1.00
17	Gooseberry	\$2.50	\$2.00	\$1.50	\$1.25	\$1.00
18	Ground Cherry	\$2.50	\$2.00	\$1.50	\$1.25	\$1.00
19	Red Raspberry	\$2.50	\$2.00	\$1.50	\$1.25	\$1.00
20	Black Raspberry	\$2.50	\$2.00	\$1.50	\$1.25	\$1.00
21	Strawberry	\$2.50	\$2.00	\$1.50	\$1.25	\$1.00
22	Native wild berry, collection	\$5.00	\$4.00	\$3.00	\$2.00	\$1.00
23	Grapes, any named variety - plate of 2 bunches	\$5.00	\$4.00	\$3.00	\$2.00	\$1.00

Berries - on plate, 1 pint

24	Blackberry	\$2.50	\$2.00	\$1.50	\$1.25	\$1.00
25	Blueberry	\$2.50	\$2.00	\$1.50	\$1.25	\$1.00
26	Currant	\$2.50	\$2.00	\$1.50	\$1.25	\$1.00
27	Dewberry	\$2.50	\$2.00	\$1.50	\$1.25	\$1.00
28	Elderberry	\$2.50	\$2.00	\$1.50	\$1.25	\$1.00
29	Gooseberry	\$2.50	\$2.00	\$1.50	\$1.25	\$1.00
30	Ground Cherry	\$2.50	\$2.00	\$1.50	\$1.25	\$1.00
31	Red Raspberry	\$2.50	\$2.00	\$1.50	\$1.25	\$1.00
32	Black Raspberry	\$2.50	\$2.00	\$1.50	\$1.25	\$1.00
33	Strawberry	\$2.50	\$2.00	\$1.50	\$1.25	\$1.00

*Bushel basket of diamond shaped display - 14 1/2" x 26"

**Display of 5 each or 5 varieties, correctly named.

***Any named variety - plate of 5.



Section 2 -- Edible Nuts

Ten specimens of each variety to be entered.

ID No.	Class Description	\$5.00	\$4.00	\$3.00	\$2.00	\$1.00
1	American Black Walnuts	\$5.00	\$4.00	\$3.00	\$2.00	\$1.00
2	Butternuts, any variety	\$5.00	\$4.00	\$3.00	\$2.00	\$1.00
3	English Walnuts	\$5.00	\$4.00	\$3.00	\$2.00	\$1.00
4	Hazelnuts	\$5.00	\$4.00	\$3.00	\$2.00	\$1.00
5	Hearnuts	\$5.00	\$4.00	\$3.00	\$2.00	\$1.00
6	Hicans	\$5.00	\$4.00	\$3.00	\$2.00	\$1.00
7	Peanuts	\$5.00	\$4.00	\$3.00	\$2.00	\$1.00
8	Pecans	\$5.00	\$4.00	\$3.00	\$2.00	\$1.00
9	Native American or Chinese Chestnuts	\$5.00	\$4.00	\$3.00	\$2.00	\$1.00
10	Shell bark, shag bark Hickories	\$5.00	\$4.00	\$3.00	\$2.00	\$1.00
11	Any other named nut not listed	\$5.00	\$4.00	\$3.00	\$2.00	\$1.00
12	Any of the above listed nuts*	\$5.00	\$4.00	\$3.00	\$2.00	\$1.00
13	Assorted groups of any 5 nuts listed above	\$10.00	\$8.00	\$6.00	\$4.00	\$2.00

*One-half pounds kernels

FAIRS *feature* AGRICULTURE

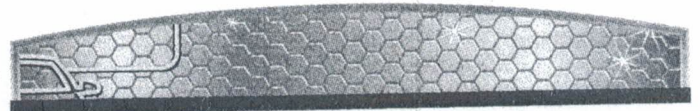
(814) 362-3827
102 Main Street
Bradford, PA 16701

Off & McHenry
Pharmacy



Prescription Specialists

Betsy Eschrich
Mike Dolan
Registered Pharmacists



Richard Bartlett
(814) 596-0059

171 Seaward Avenue
Bradford PA
16701

www.blueprintautobody.com