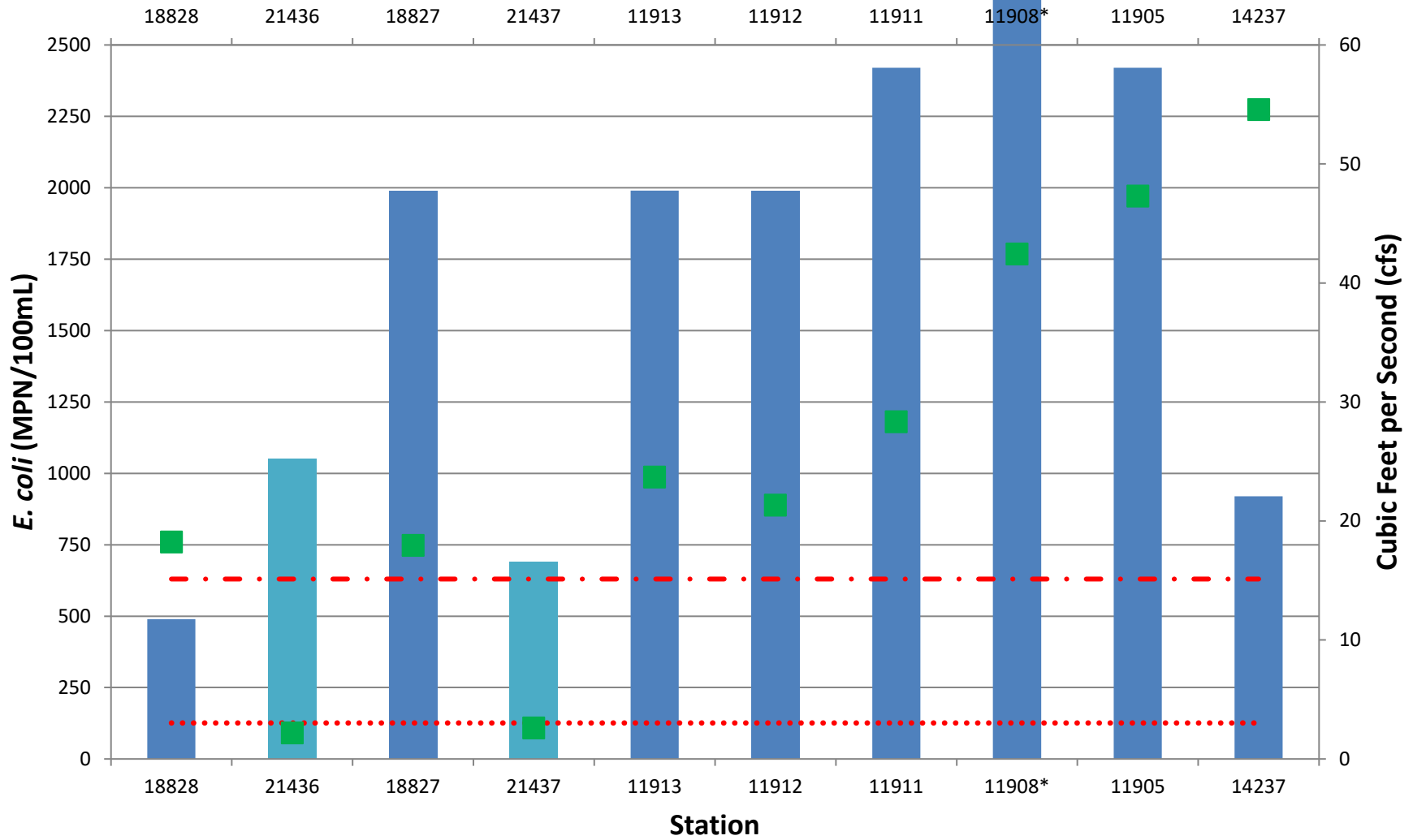


Date of collection: April 4, 2018

All data are preliminary and subject to change.



■ E. coli of Stations on Nolan Creek

■ E. coli of Stations on Nolan Creek Tributaries

..... PRC Criterion

- . - . SCR1 Criterion

■ Flow (cfs)

*Site 11908 data showed 7060 MPN/100mL