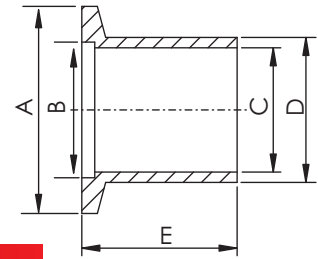


DN Fittings

DN BUTT WELD STUBS, LENGTH 26MM

*Material: SS 304L



Part Number	Flange Size	A	B	C	D	E
DN-BW26-10	DN10	30.00	12.20	10.00	14.00	26.00
DN-BW26-16	DN16	30.00	17.20	16.00	20.00	26.00
DN-BW26-20	DN20	40.00	22.20	21.00	25.00	26.00
DN-BW26-25	DN25	40.00	26.20	24.00	28.00	26.00
DN-BW26-32	DN32	55.00	34.20	34.00	38.00	26.00
DN-BW26-40	DN40	55.00	41.20	40.50	44.50	26.00
DN-BW26-50	DN50	75.00	52.20	50.60	57.00	26.00

DN BUTT WELD STUBS, LENGTH 30MM

*Material: SS 304L

Part Number	Flange Size	A	B	C	D	E
DN-BW30-10	DN10	30.00	12.20	10.00	14.00	30.00
DN-BW30-16	DN16	30.00	17.20	16.00	20.00	30.00
DN-BW30-25	DN25	40.00	26.20	24.00	28.00	30.00
DN-BW30-40	DN40	55.00	41.20	40.50	44.50	30.00
DN-BW30-50	DN50	75.00	52.20	50.60	57.00	30.00

DN BUTT WELD STUBS, LENGTH 55MM

*Material: SS 304L

Part Number	Flange Size	A	B	C	D	E
DN-BW55-10	DN10	30.00	12.20	10.00	14.00	55.00
DN-BW55-16	DN16	30.00	17.20	16.00	20.00	55.00
DN-BW55-25	DN25	40.00	26.20	24.00	28.00	55.00
DN-BW55-40	DN40	55.00	41.20	40.50	44.50	55.00
DN-BW55-50	DN50	75.00	52.20	50.60	57.00	55.00

DN BUTT WELD STUBS, LENGTH 70MM

*Material: SS 304L

Part Number	Flange Size	A	B	C	D	E
DN-BW70-10	DN10	30.00	12.20	10.00	14.00	70.00
DN-BW70-16	DN16	30.00	17.20	16.00	20.00	70.00
DN-BW70-25	DN25	40.00	26.20	24.00	28.00	70.00
DN-BW70-40	DN40	55.00	41.20	40.50	44.50	70.00
DN-BW70-50	DN50	75.00	52.20	50.60	57.00	70.00

*Note: SS 316L Material Available on Request.

**K F
DN**

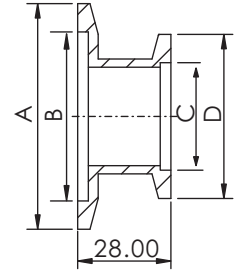
DN Fittings



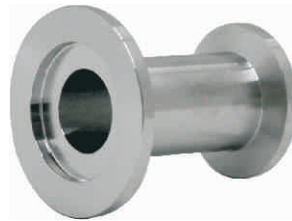
DN STRAIGHT REDUCING NIPPLES, SHORT

*Material: SS 304L

Part Number	Flange Size	A	B	C	D
DN-SRNS-16x10	DN16/DN10	30.00	17.20	12.20	30.00
DN-SRNS-25x10	DN25/DN10	40.00	26.20	12.20	30.00
DN-SRNS-25x16	DN25/DN16	40.00	26.20	17.20	30.00
DN-SRNS-40x10	DN40/DN10	55.00	41.20	12.20	30.00
DN-SRNS-40x16	DN40/DN16	55.00	41.20	17.20	30.00
DN-SRNS-40x25	DN40/DN25	55.00	41.20	26.20	40.00
DN-SRNS-50x16	DN50/DN16	75.00	52.20	17.20	30.00
DN-SRNS-50x25	DN50/DN25	75.00	52.20	26.20	40.00
DN-SRNS-50x40	DN50/DN40	75.00	52.20	41.20	55.00



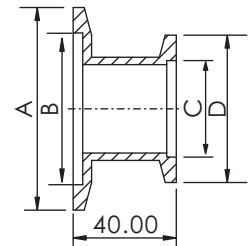
**K F
DN**



DN STRAIGHT REDUCING NIPPLES, LONG

*Material: SS 304L

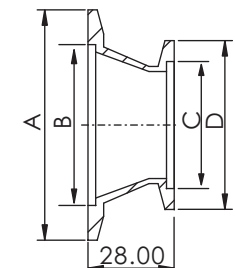
Part Number	Flange Size	A	B	C	D
DN-SRNL-25x16	DN25/DN16	40.00	26.20	17.20	30.00
DN-SRNL-40x16	DN40/DN16	55.00	41.20	17.20	30.00
DN-SRNL-40x25	DN40/DN25	55.00	41.20	26.20	40.00
DN-SRNL-50x16	DN50/DN16	75.00	52.20	17.20	30.00
DN-SRNL-50x25	DN50/DN25	75.00	52.20	26.20	40.00
DN-SRNL-50x40	DN50/DN40	75.00	52.20	41.20	55.00



DN CONICAL REDUCING NIPPLES

*Material: SS 304L

Part Number	Flange Size	A	B	C	D
DN-CRN-25x16	DN25/DN16	40.00	26.20	17.20	30.00
DN-CRN-40x16	DN40/DN16	55.00	41.20	17.20	30.00
DN-CRN-40x25	DN40/DN25	55.00	41.20	26.20	40.00
DN-CRN-50x16	DN50/DN16	75.00	52.40	17.20	30.00
DN-CRN-50x25	DN50/DN25	75.00	52.40	26.20	40.00
DN-CRN-50x40	DN50/DN40	75.00	52.40	41.20	55.00



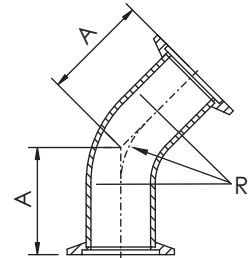
*Note: SS 316L Material Available on Request.

DN Fittings

DN 45° ELBOWS WITH TANGENTS

*Material: SS 304L

*Tube Finish: Bead Blast

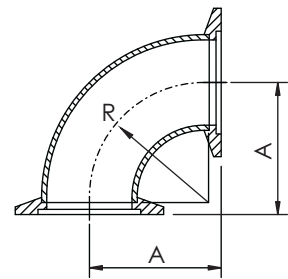


Part Number	Flange Size	A	R	Tube Size
DN-45ELT-10	DN10	30.00	26.50	14.0 X 2.0mmt
DN-45ELT-16	DN16	26.00	37.00	20.0 X 1.5mmt
DN-45ELT-25	DN25	32.00	42.00	28.0 X 1.5mmt
DN-45ELT-40	DN40	40.00	62.00	44.5 X 2.0mmt
DN-45ELT-50	DN50	51.00	66.50	54.0 X 2.0mmt

DN 90° ELBOWS

*Material: SS 304L

*Tube Finish: Bead Blast



Part Number	Flange Size	A	R	Tube Size
DN-90EL-10	DN10	30.00	26.50	14.0 x 2.0mmt
DN-90EL-16	DN16	40.00	37.00	20.0 x 1.5mmt
DN-90EL-25	DN25	50.00	42.00	28.0 x 1.5mmt
DN-90EL-40	DN40	65.00	62.00	44.5 x 2.0mmt
DN-90EL-50	DN50	70.00	66.50	54.0 x 2.0mmt

*Note: SS 316L Material Available on Request.

*Note: Polished and Electro- Polished Tube Finishes Available on Request.

**K F
DN**

DN Fittings

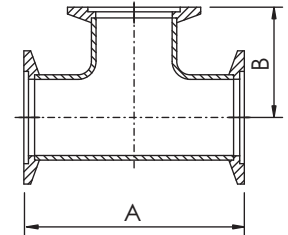
DN EQUAL TEES

*Material: SS 304L

*Tube Finish: Bead Blast



Part Number	Flange Size	A	B	Tube Size
DN-ET-10	DN10	60.00	30.00	14.0 x 2.0mmt
DN-ET-16	DN16	80.00	40.00	20.0 x 1.5mmt
DN-ET-25	DN25	100.00	50.00	28.0 x 1.5mmt
DN-ET-40	DN40	130.00	65.00	44.5 x 2.0mmt
DN-ET-50	DN50	140.00	70.00	54.0 x 2.0mmt
DN-ET-57	DN57	140.00	70.00	57.0 x 3.0mmt



**K F
DN**

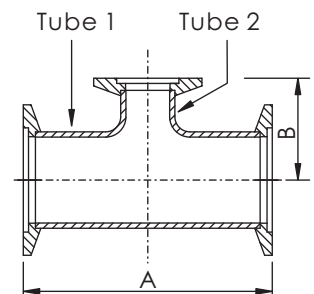
DN REDUCING TEES

*Material: SS 304L

*Tube Finish: Bead Blast



Part Number	Flange Size	A	B	Tube 1	Tube 2
DN-RT-25x10	DN25/DN10	100.00	40.00	28.0 x 1.5mmt	14.0 x 2.0mmt
DN-RT-25x16	DN25/DN16	100.00	40.00	28.0 x 1.5mmt	20.0 x 1.5mmt
DN-RT-40x16	DN40/DN16	130.00	40.00	44.5 x 2.0mmt	20.0 x 1.5mmt
DN-RT-40x25	DN40/DN25	130.00	50.00	44.5 x 2.0mmt	28.0 x 1.5mmt
DN-RT-50x16	DN50/DN16	140.00	50.00	20.0 x 1.5mmt	20.0 x 1.5mmt
DN-RT-50x25	DN50/DN25	140.00	65.00	54.0 x 2.0mmt	28.0 x 1.5mmt
DN-RT-50x40	DN50/DN40	140.00	65.00	54.2 x 2.0mmt	44.5 x 2.0mmt
DN-RT-57x16	DN57/DN16	140.00	50.00	57.0 x 3.0mmt	20.0 x 1.5mmt
DN-RT-57x25	DN57/DN25	140.00	65.00	57.0 x 3.0mmt	28.0 x 1.5mmt
DN-RT-57x40	DN57/DN40	140.00	65.00	57.0 x 3.0mmt	44.5 x 2.0mmt



Note: SS 316L Material Available on Request.

Note: Polished and Electro- Polished Tube Finishes Available on Request.

DN Fittings

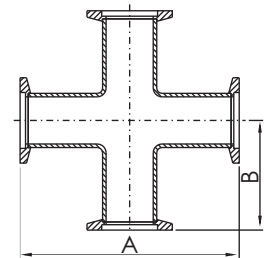
DN 4-WAY CROSSES

*Material: SS 304L

*Tube Finish: Bead Blast



Part Number	Flange Size	A	B	Tube Size
DN-4C-10	DN10	60.00	30.00	14.0 x 2.0mmt
DN-4C-16	DN16	80.00	40.00	20.0 x 1.5mmt
DN-4C-25	DN25	100.00	50.00	28.0 x 1.5mmt
DN-4C-40	DN40	130.00	65.00	44.5 x 2.0mmt
DN-4C-50	DN50	140.00	70.00	54.0 x 2.0mmt
DN-4C-57	DN57	140.00	70.00	57.0 x 3.0mmt



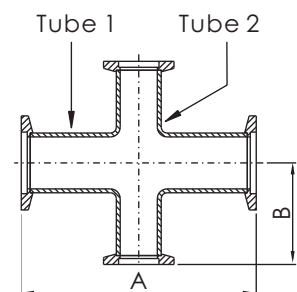
DN REDUCING 4-WAY CROSSES

*Material: SS 304L

*Tube Finish: Bead Blast



Part Number	Flange Size	A	B	Tube 1	Tube 2
DN-4RC-25x10	DN25/DN10	100.00	40.00	28.0 x 1.5mmt	14.0 x 2.0mmt
DN-4RC-25x16	DN25/DN16	100.00	40.00	28.0 x 1.5mmt	20.0 x 1.5mmt
DN-4RC-40x10	DN40/DN10	130.00	40.00	44.5 x 2.0mmt	14.0 x 2.0mmt
DN-4RC-40x16	DN40/DN16	130.00	40.00	44.5 x 2.0mmt	20.0 x 1.5mmt
DN-4RC-40x25	DN40/DN25	130.00	50.00	44.5 x 2.0mmt	28.0 x 1.5mmt
DN-4RC-50x16	DN50/DN16	140.00	50.00	54.0 x 2.0mmt	20.0 x 1.5mmt
DN-4RC-50x25	DN50/DN25	140.00	50.00	54.0 x 2.0mmt	28.0 x 1.5mmt
DN-4RC-50x40	DN50/DN40	140.00	65.00	54.0 x 2.0mmt	44.5 x 2.0mmt
DN-4RC-57x16	DN57/DN16	140.00	50.00	57.0 x 3.0mmt	20.0 x 1.5mmt
DN-4RC-57x25	DN57/DN25	140.00	50.00	57.0 x 3.0mmt	28.0 x 1.5mmt
DN-4RC-57x40	DN57/DN40	140.00	65.00	57.0 x 3.0mmt	44.5 x 2.0mmt



*Note: SS 316L Material Available on Request.

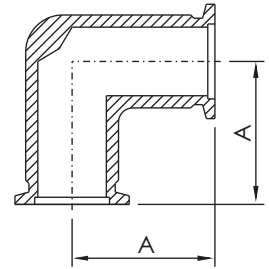
*Note: Polished and Electro- Polished Tube Finishes Available on Request.

**K F
DN**

DN Machined Fittings

DN 90° ELBOW, MACHINED

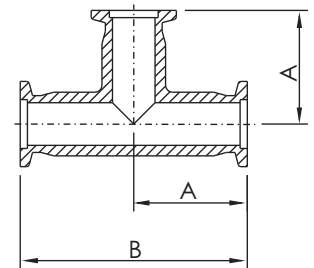
*Material: Aluminum



Part Number	Flange Size	A
DN-90ELMA-16-AL	DN16	40.00
DN-90ELMA-25-AL	DN25	50.00
DN-90ELMA-40-AL	DN40	65.00

DN EQUAL TEES, MACHINED

*Material: Aluminum

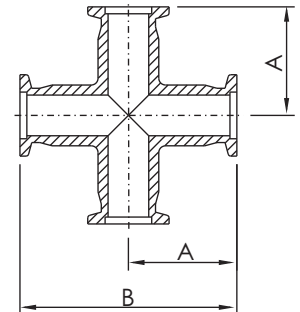


**K F
DN**

Part Number	Flange Size	A	B
DN-ETMA-16-AL	DN16	40.00	80.00
DN-ETMA-25-AL	DN25	50.00	100.00
DN-ETMA-40-AL	DN40	65.00	130.00

DN 4-WAY CROSSES, MACHINED

*Material: Aluminum



Part Number	Flange Size	A	B
DN-4CMA-16-AL	DN16	40.00	80.00
DN-4CMA-25-AL	DN25	50.00	100.00
DN-4CMA-40-AL	DN40	65.00	130.00