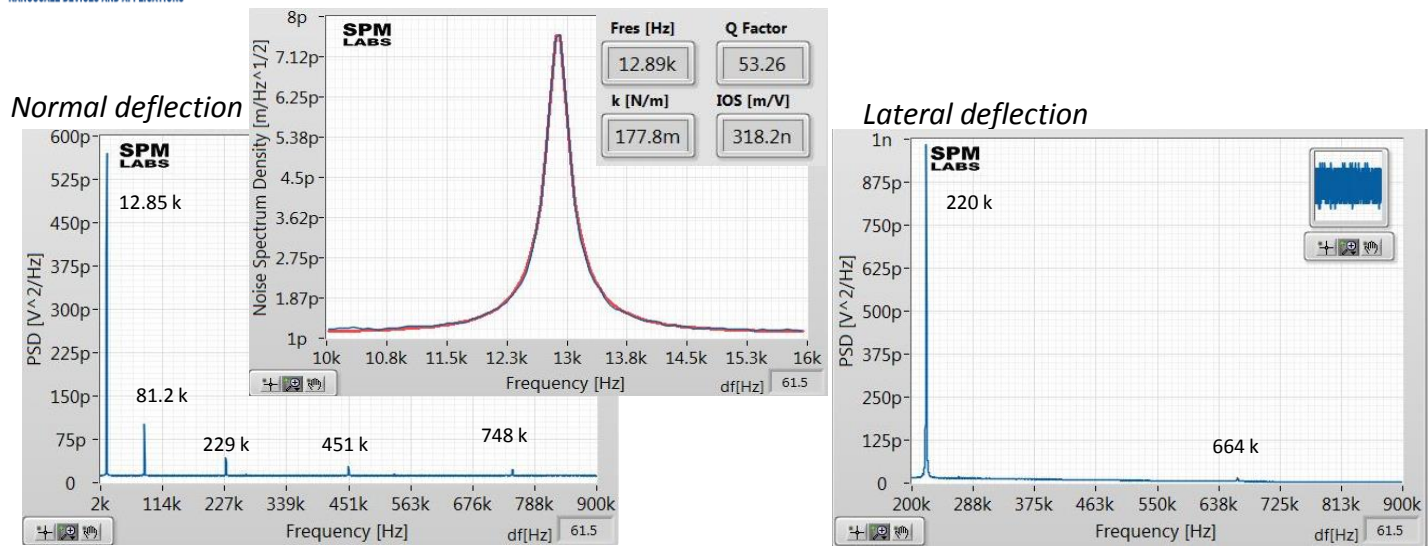


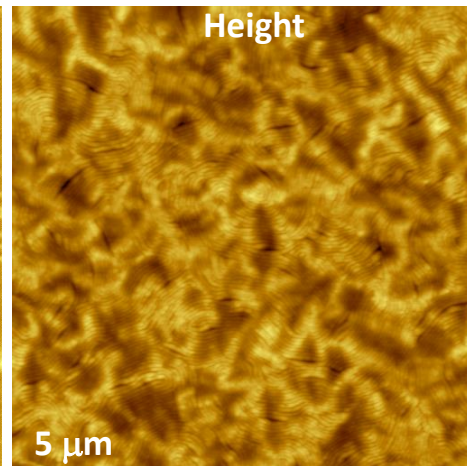
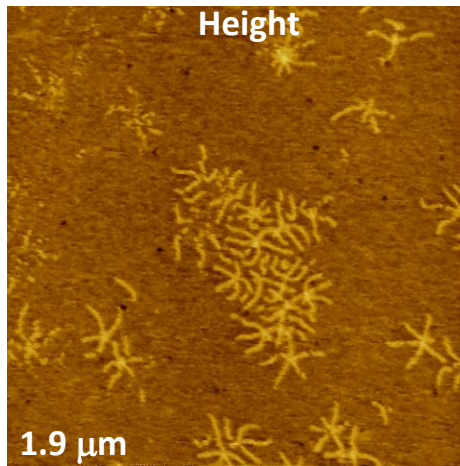
*Thermal Tune Data obtained with DCC accessory*



Among Si probes only those with long cantilevers have spring constant that are most suitable for contact mode studies. Several examples of AFM images, which were recorded with such probes on samples of macromolecules, triblock copolymer and polymer blends are shown here.

“Spoke-wheel” molecules

PS-*b*-PB-*b*-PS



sPS/PVDF

PMMA/PVDF

