



Trailer Parts Unlimited
 631 State Highway 75 North.
 Huntsville, TX 77320
 Phone: 844-898-8687
 Fax: 844-303-8687
 Email: texasmadetrailerparts@gmail.com

Leaf Spring Axle Order Form

(500 - 8,000 LB Capacity)

For BEAM ONLY orders - Do not complete shaded section

Date: _____

Customer: _____

Address: _____

City: _____ State: _____ Zip: _____

Phone: _____

Fax: _____

Trailer Manufacturer: _____

Trailer Make: _____

Trailer Model: _____

Capacity: _____

Axle Type: Straight Drop Drop Center

Axle w/Brake Flange: Yes No

Camber: Yes No

Hub Face Dimension: (see drawing) _____

Spring Center: (see drawing) _____

Mount Type: (see drawing) Bottom Top

Spring Type: Double Eye Slipper

Spring Length: _____

Hub Bolt Pattern: (if desired) _____

Brake Type: (if desired) Idler Disc Electric

Electric w/Park Hydraulic Free-Backing

Hydraulic Free-Backing w/Park

Hydraulic w/Uni-Servo Hydraulic w/Duo-Servo

Wheel Stud Size: 7k w/8-bolt 1/2" 9/16" 5/8"

8k w/8-bolt 9/16" 5/8"

Pre-wired: Yes No

Lubrication: Grease Ultralube Oil Bath (7k-8k)

Paint: Paint Galvanized E-Coat Raw

Notes: _____

Customer PO: _____

Quantity: _____

Customer Signature: _____

Axle Type	Tube Size	Overhang	
		Minimum	Maximum
T20 Idler	1 3/4"	10"	15 1/4"
T20 Brake	1 3/4"	11 3/4"	15 1/4"
T20 Idler	2 3/8"	11 3/4"	20"
T20 Brake	2 3/8"	11 3/4"	20"
T35 Straight	2 3/8"	11 1/4"	17"
D35 Drop	2 3/8"	14 7/8"	19"
T35 Straight	3"	14 1/4"	23"
D35 Drop	3"	14 1/4"	23"
T44 Straight	3"	14"	22"
T52/T60 Straight	3"	13"	18"
T70 Straight	3"	13"	19 1/2"
D52/D60 Drop	3"	17"	20 1/2"
D70 Drop	3"	17"	19 1/2"
T80 Straight 12" x 3 3/8"	3 1/2"	17"	22"
D80 Drop 12" x 3 3/8"	3 1/2"	18"	23 1/2"
ST80 Straight 12" x 2"	3 1/2"	15"	22"
DR80 Drop 12" x 2"	3 1/2"	18"	23 1/2"

Hub Face and Spring measurements are only available in 1/4" increments.

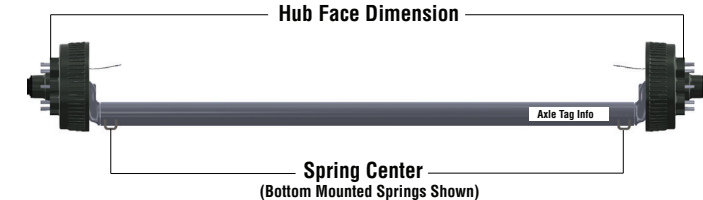
Straight Axle



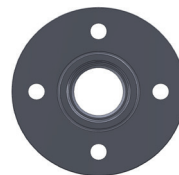
Drop Center Axle



Drop Axle



440



500 - 2,000

545**, 5475, 550, 555



500 - 3,500

**500# - 2000# ONLY
 (Please see diagram for measurement directions)

Bolt Pattern
 Measurement

655



6 Lug
 10" and 12"

865



5,200 - 8,000

Custom Axle Orders Are Non-Refundable. Custom Axles Take 4-6 Weeks In Most Cases. We have seen them take longer in some cases. Please understand that sometimes they will take as long as it takes and we have no control over it. We are not the manufacture and can not control how long they take. We can only provide great prices on the items we offer but sometimes it takes longer than expected.