



Cassette 100

Fabrication & Installation Instructions

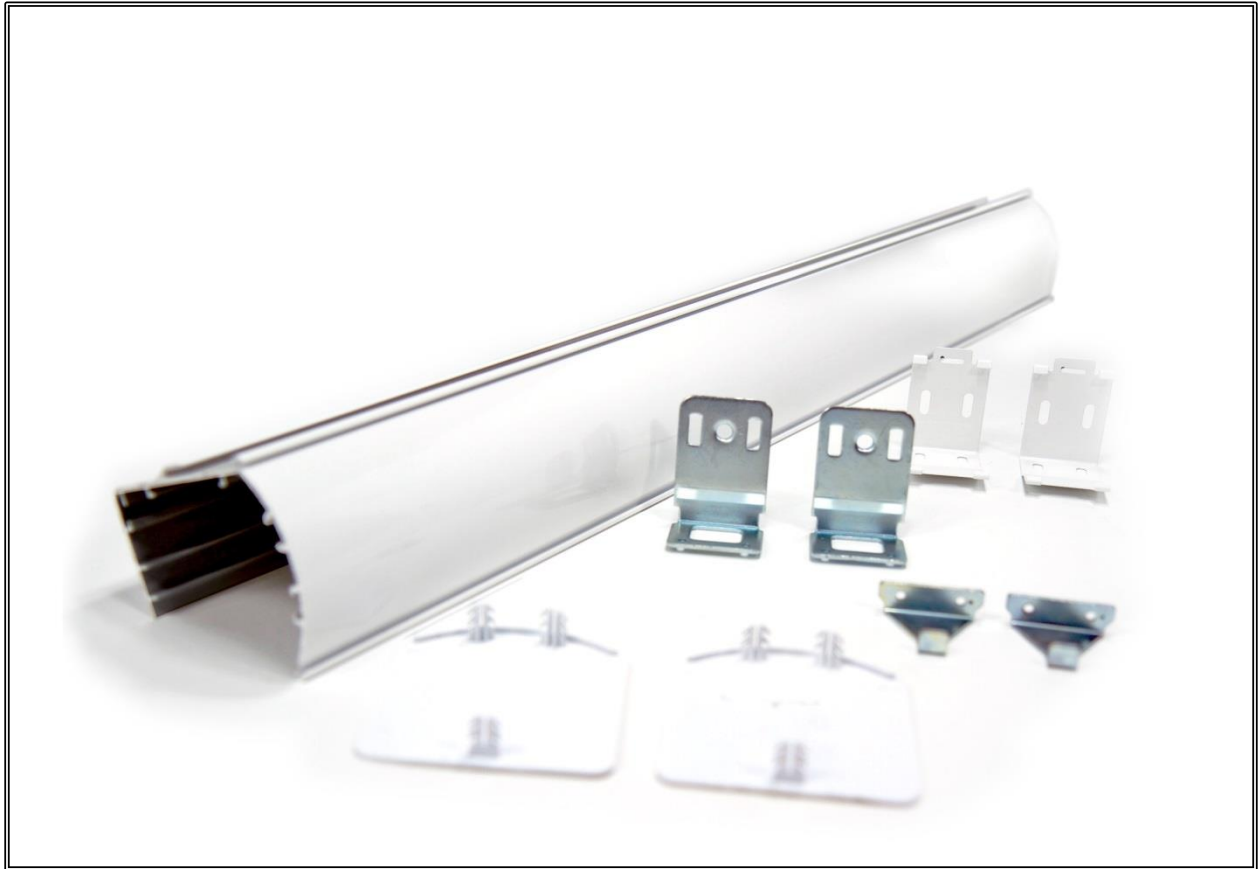




Table of Contents

Cassette Systems Tools Needed _____	page 3
System Diagram-Skyline _____	page 4
System Diagram-R-Series _____	page 5
Components Needed _____	page 6
Fabrication Instructions _____	page 7-8
Installation Instructions _____	page 9-10
Inserting Zebra Fabric _____	page 11-12

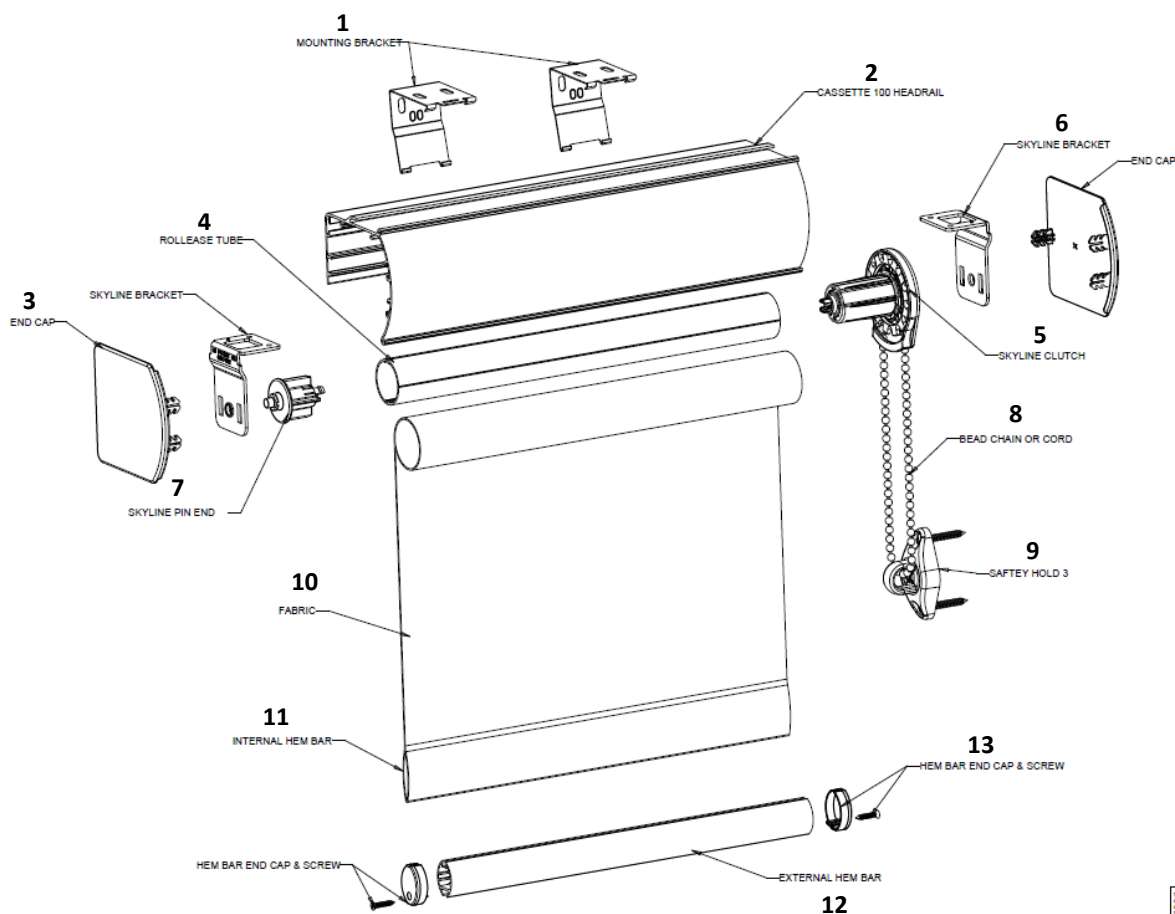


Cassette 100 Tools Needed

Cutting Table for Fabric
Saw
Screwdriver/Power Drill
Screws (screw type dependent on surface you are installing the shade)
Hammer/Mallet
Measuring Tape
Level
Ladder
Eye Protection
Gloves

Skyline

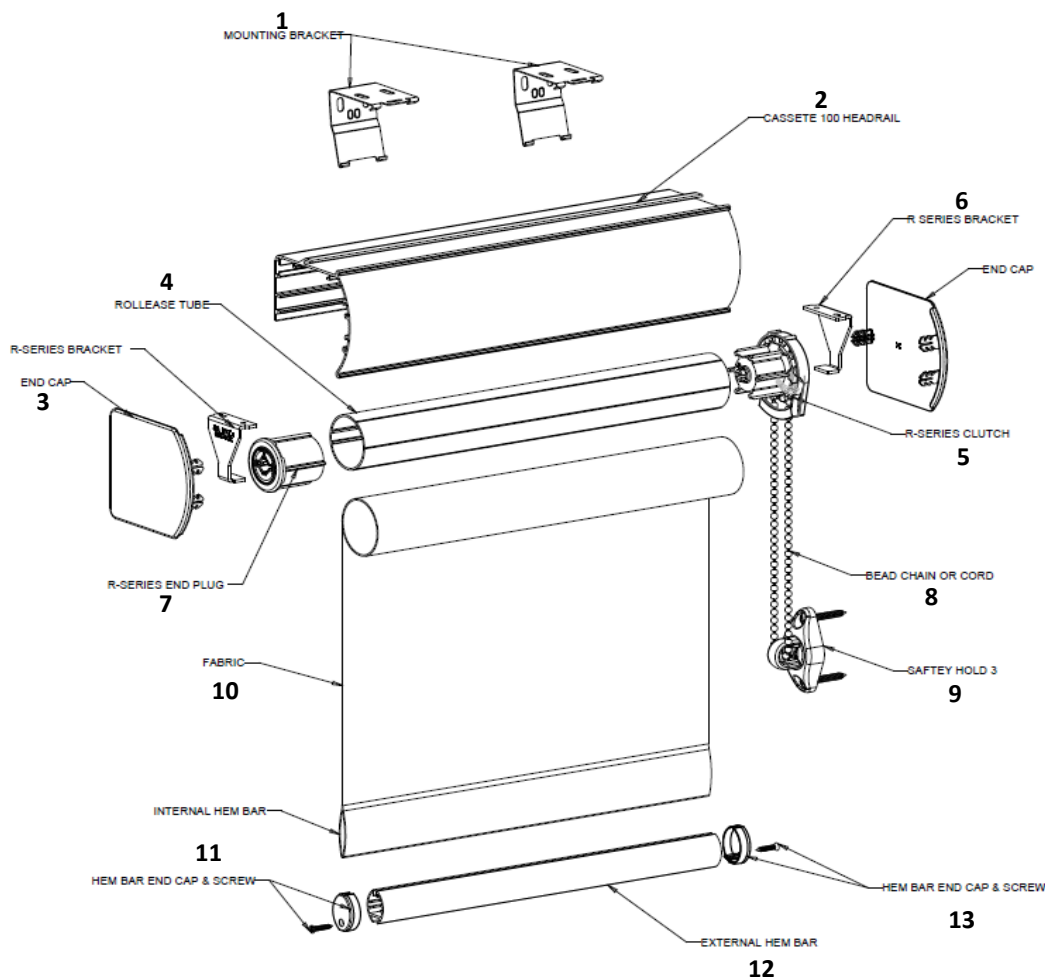
Cassette 100 System Diagram



1	Mounting Brackets
2	Cassette 100 Headrail
3	End Cap
4	RollEase Tube
5	Skyline Clutch
6	Skyline Bracket
7	Skyline Pin End (Idler)
8	Bead Chain or Cord
9	SafetyHold 3
10	Fabric
11	Internal Hem Bar
12	External Hem Bar
13	Hem Bar End Cap & Screw

Note: Use either Internal OR External Hem bar with End Cap & Screws


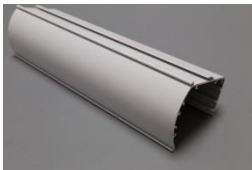



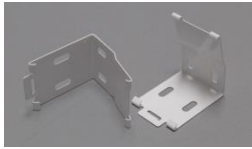


R-Series Cassette 100 System Diagram



1	Mounting Brackets
2	Cassette 100 Headrail
3	End Cap
4	RollEase Tube
5	R-Series Clutch
6	R-Series Bracket
7	R-Series End Plug (Idler)
8	Bead Chain or Cord
9	SafetyHold 3
10	Fabric
11	Internal Hem Bar
12	External Hem Bar
13	External Hem Bar End Caps & Screws

Note: Use either Internal OR External Hem Bar with End Cap & Screws

Fabrication Instructions Skyline & R-Series Cassette 100 Components Needed

Quantity	Description	Item #	Image
1	Roller shade assembled to tube with clutch and idler inserted.	N/A	
1	Cassette 100 Headrail	CRV100	
2	Cassette 100 End Caps	CREC100	
Choose 2 - Skyline brackets or 1 set - R-Series Brackets	Cassette Brackets Choose R-Series or Skyline	CRUBKT53 – R-Series CRUSLB - Skyline	<div>R-Series</div> <div>Skyline</div>  
Varies by Shade Width (1 bracket every 18")	Cassette 100 Mounting Brackets	HDBKT2	
Varies by Shade Width (1 bracket every 18")	Intermediate Brackets For use when using multiple in-line manual shades together with multiple clutches	CRIMBKT53 – R-Series CRUSLB660I or CRUSLB680I - Skyline	<div>R-Series</div> <div>Skyline</div>  

Skyline & R-Series

100 Cassette Fabrication

Step 1: Cut (use RollEase deduction charts to calculate width of cuts)

1a. Cut Headrail

1b. Cut Tube

1c. Cut Hem Bar

1d. Cut Fabric for shade and for Cassette Insert (Cassette insert should be cut 3"-3-1/8" wide, and as long as the total length of the headrail)

Step 2: Assemble Shade

2a. Attach Hem Bar to Fabric

2b. Attach Fabric to taped tube

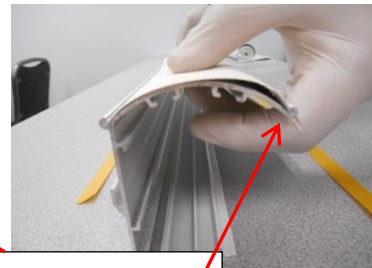
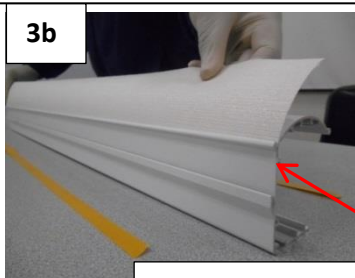
2c. Attach Bead Chain or Cord to Clutch

2d. Attach Tension Device to Cord or Bead Chain (see Safety Hold3 Instructions)

Step 3: Insert Fabric Strip into Cassette Headrail

3a. Apply two sided tape to headrail

3b. Insert fabric into groove in headrail, beginning on either side rolling fabric over the headrail and slipping into the groove on the opposite side.



Slowly tuck in fabric starting at one side of the cassette and moving to the other

Step 4: Insert Clutch and Idler

4a. Insert Clutch

4b. Insert Idler

Skyline



R-Series



Skyline & R-Series Cassette 100 Fabrication

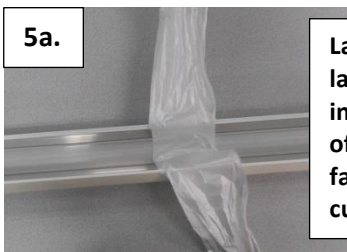
Step 5: Assemble Headrail and assembled shade

5a. Lay Cassette on table or flat surface. Insert one bracket by aligning bracket into grooves on inside top of the headrail. Push bracket all the way in. (be careful not to bend bracket if using a mallet or hammer to tap brackets in) If desired, use screws to hold brackets in place

5b. Insert clutch and idler end of tube onto the bracket. (see note for R-Series)

5c. Attach End Caps (if desired)

5a.



Lay plastic across cassette before laying in tube with fabric. After installing shade, tie around the top of cassette to prevent shade from falling during shipment to customer.

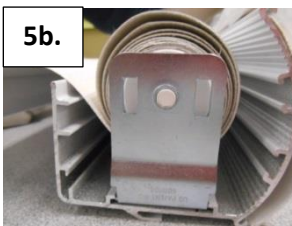
Skyline

5a.



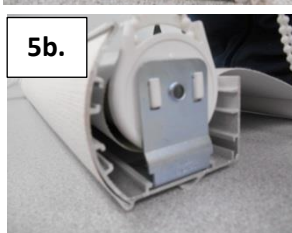
Gently tap bracket into headrail

5b.



Push tip of pin end into hole in the center of the Skyline bracket.

5b.

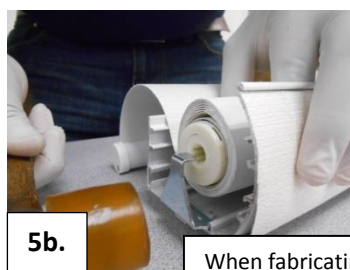


For Skyline, insert idler side first. Push into bracket, and slip clutch side down until the hooks engage in the holes in the bracket and lock into place.

Engage the hooks of the Skyline clutch into the slots in the bracket and secure in place.

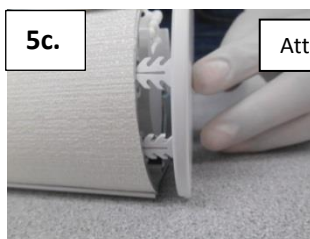
R-Series

5b.



When fabricating R-Series, you must insert one bracket and insert clutch or pin end, and then simultaneously insert other bracket into the opposite end.

5c.



Attach End Caps



Step 6: Pack and Ship

6a. Wrap Cassette in correct packaging material and box. Include Mounting Brackets and Screws

6b. Your Cassette is now ready to ship.

Note: Be sure that Safety Tags are attached and the shade is inoperable and compliant with the WCMA Standards.



Cassette 100

Skyline & R-Series – Inside Mount & Outside Mount Cassette 100 Installation

Step 1: Carefully remove shade from the box and package wrapping.

TIP: Installation is the same in both Skyline and R-Series applications. However, deduction data will vary.

Step 2: Install Mounting Brackets using correct screws.

Tip: Mounting Brackets should be placed approximately every 18"

Inside Mount



For inside mount,
use holes on top
of bracket

Outside Mount



For outside mount,
use holes on the back
of bracket

Step 3: Install Headrail

Snap Headrail into place by sliding groove in back of headrail into the bottom of the mounting bracket. Push forward and up, snapping the headrail into the top of the mounting bracket.



Be sure the hooked
part of the bracket is
fully engaged around
the headrail



Cassette 100

**Skyline & R-Series– Inside & Outside Mount
Cassette 100 Installation**

Step 4: Install Tension Device (See instructions for Safety Hold3)

Installed Shade: Inside Mount



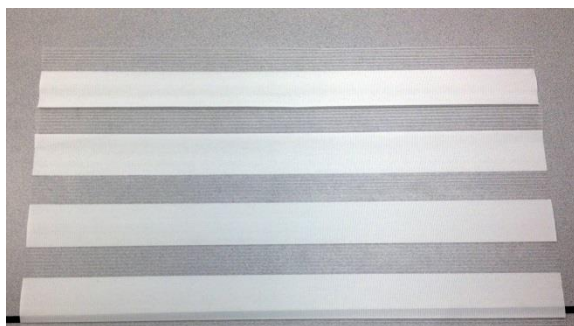
Installed Shade: Outside Mount





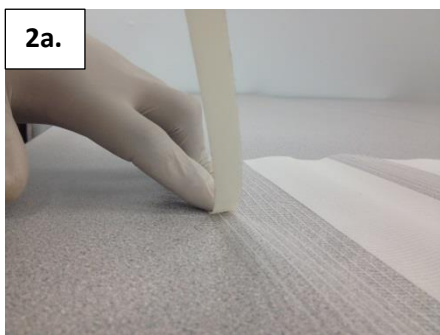
Skyline & R-Series – Zebra Fabric Installation Cassette 100

Step 1: Lay zebra fabric out on table



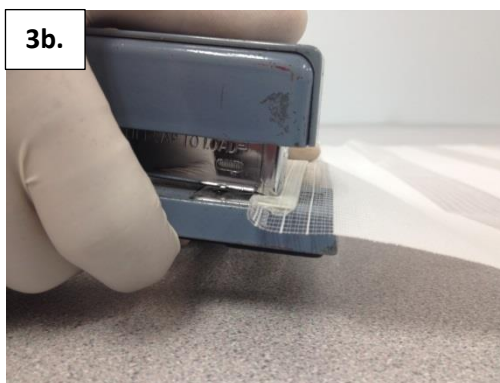
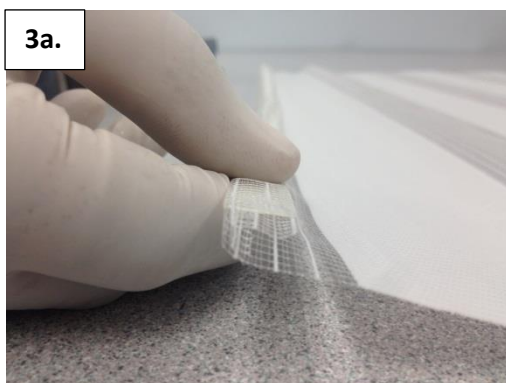
Step 2a: Cut hembar tape to the same width as the fabric.

Step 2b: Stick edge of hembar tape to the edge of the fabric.



Step 3a: Fold the taped edge twice to help add support to the tape.

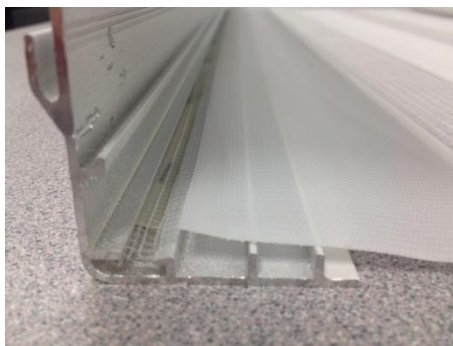
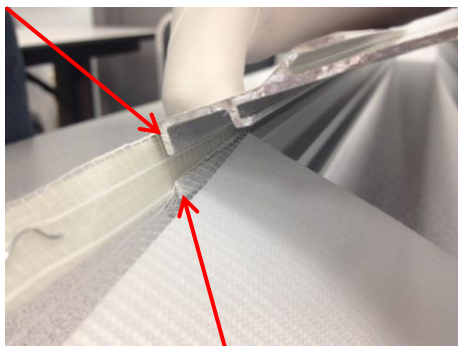
Step 3b: Staple folded edge to keep the fabric from coming unfolded.





Skyline & R-Series – Zebra Fabric Installation Cassette 100

Step 4: Slide rolled fabric edge through top ridges on the inside-back of cassette headrail.



**Installed Zebra
Fabric**

