

# Fact Sheet

Cell Tower  
03/25/18

## ♦ Salt Lake City Ordinance 21A.40.090(g)

**Utility Pole Mounted Antenna:** Antennas on utility poles and associated electrical equipment shall be allowed subject to the following standards: (1) Antennas: (A) The antennas shall be located either on an existing utility pole or on a replacement pole in the public right-of-way...(B) On an existing pole, the antennas shall not extend more than ten feet (10') above the top of the pole. (C) The antennas, including the mounting structure, shall not exceed thirty inches (30") in diameter to be considered a permitted use. Antennas with an outside diameter greater than thirty inches (30") shall be a conditional use. (D) Antennas located in the public right-of-way shall be a permitted use and shall comply with the standards listed above. (E) Conditional use approval is required for antennas located in ..all residential

See 21A.40.090 –Monopole regulations in residential zone.

The picture to the **right**, is the monopole with antenna array that was installed by T-Mobile. The picture at the **bottom**, shows the street and utility poles prior to the installation of the monopole. The graphic at the **bottom right**, shows that the monopole was installed in the heart of a residential zone. See **reverse** for the actual antenna array, width measurement. For more information see video featuring resident Zay

Alvarez at the Facebook group page:

Poplar Grove

Neighborhood Alliance.



# Cell Towers & Neighborhoods Don't Mix

## 2018 UPDATE

### Time Line

#### September 2016

T-Mobile installed a Cell Tower at 922 S. Emery St. \SLC, UT.

#### January 2017

Poplar Grove residents met with the SLC Planning Department. Residents were referred to SLC Zoning Department.

#### February 2017

Residents filed a zoning violation complaint with the Zoning Dept.

#### April 2017

Zoning Department ruled in T-Mobile favor: "no ord. violation". Zoning Department would not respond to email about appeal. Planning Director Nick Norris declared there is no violation. Residents filed a GRAMA request for emails & documents. Residents received a partial GRAMA response from Planning. Resident filed a GRAMA appeal with the Mayor's Office. Mayor's Chief of Staff, Patrick Leary, denied GRAMA appeal.

#### May 2017

Residents filed a GRAMA appeal with the State Records Comm.

#### June 2017

Residents' GRAMA appeal was granted.

#### July 2017

Residents met with City Councilman Andrew Johnston.

#### August 2017

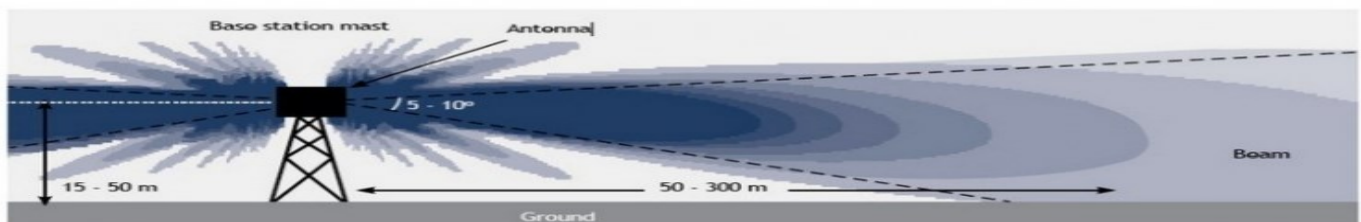
Residents received remaining documents from the City. Residents reached out to David Litvack in the Mayor's Office.

Residents are awaiting a response to questions posed to the Mayor's Office and City Council Office on procedural, next steps. In a **February 28, 2018**, City Council meeting (NW Quad), Planning Director Nick Norris, told the City Council that all "*administrative decisions*" from his office can be appealed. Residents will meet with Mayor's office on **April, 4, 2018**.

*The picture below displays the laser measurement of the antenna array, width: Six feet, ten inches (6'10")*



## Radiation Pattern of a Cell Tower Antenna



Propagation of "main beam" from antenna mounted on a tower or roof top

People living within 50 to 300 meter radius are in the high radiation zone (dark blue) and are more prone to ill-effects of electromagnetic radiation