



# Hernando Beach 2016-2020

Vision & Business Development Plan





Diane M. Greenwell  
Created 12/21/19

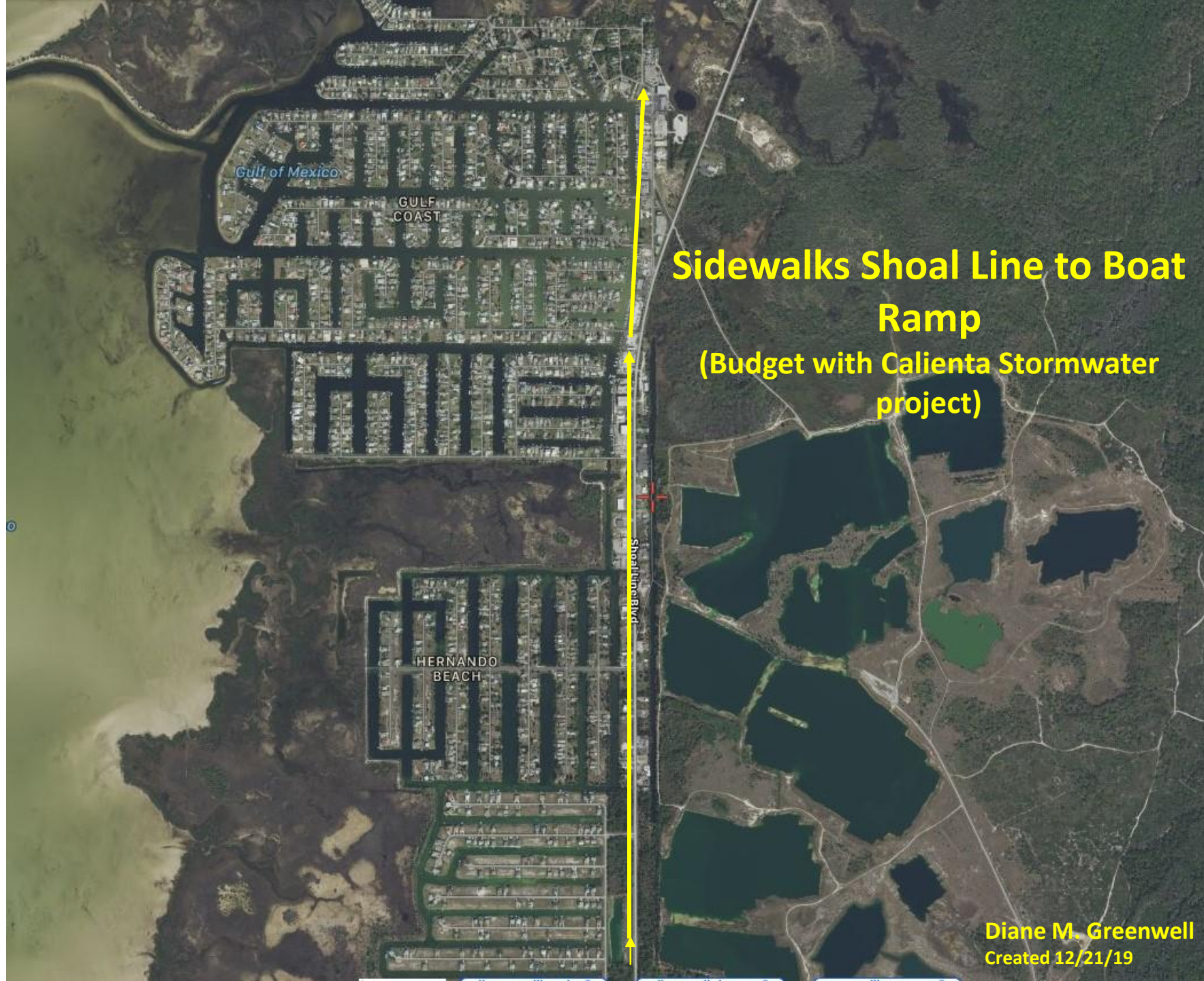


Cross Walks

Rumble Strips

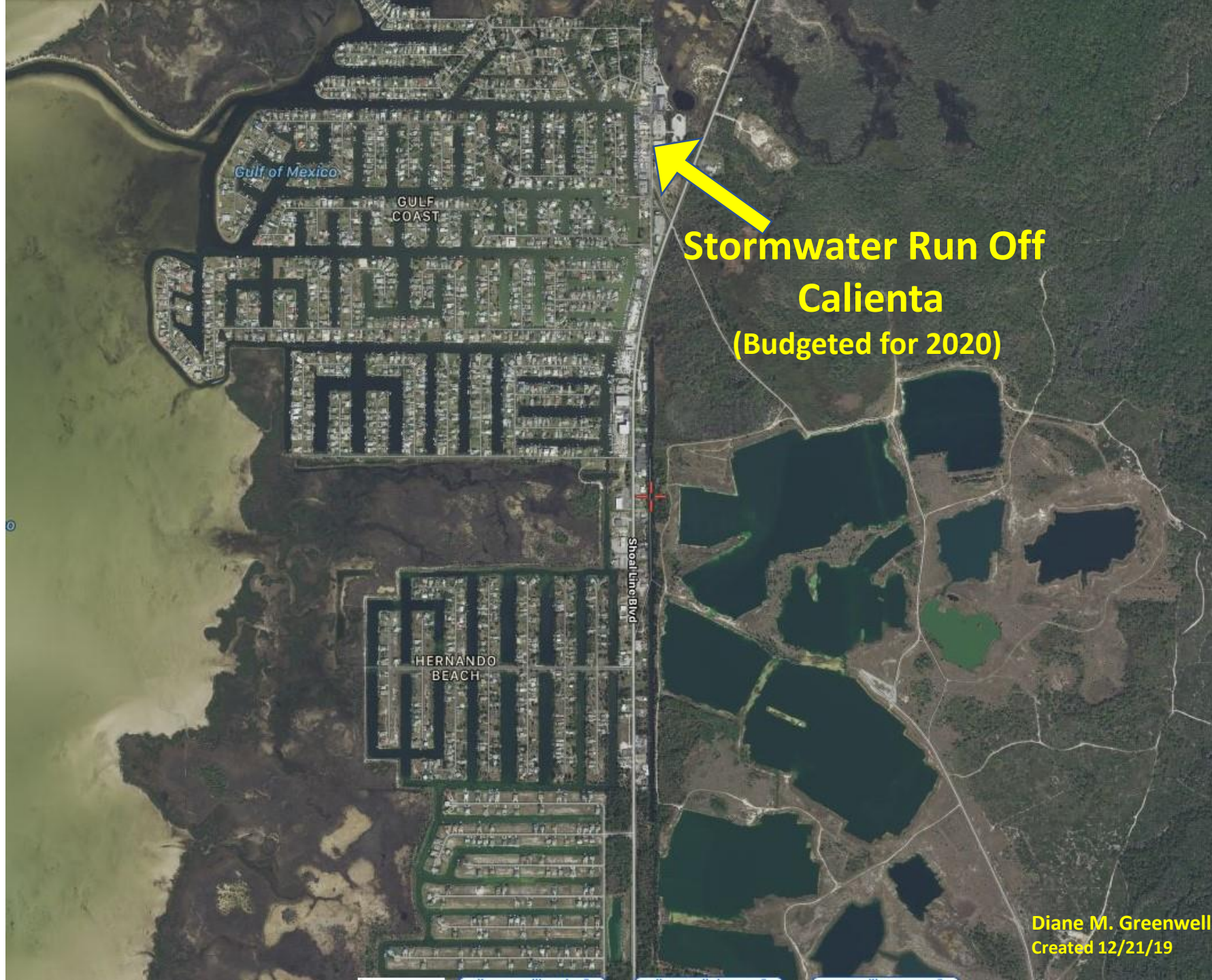
Reduce Speed  
prior to HBS to  
north of Water  
Tower 30 mph  
and make  
walking, golf  
cart friendly





**Sidewalks Shoal Line to Boat  
Ramp  
(Budget with Calienta Stormwater  
project)**

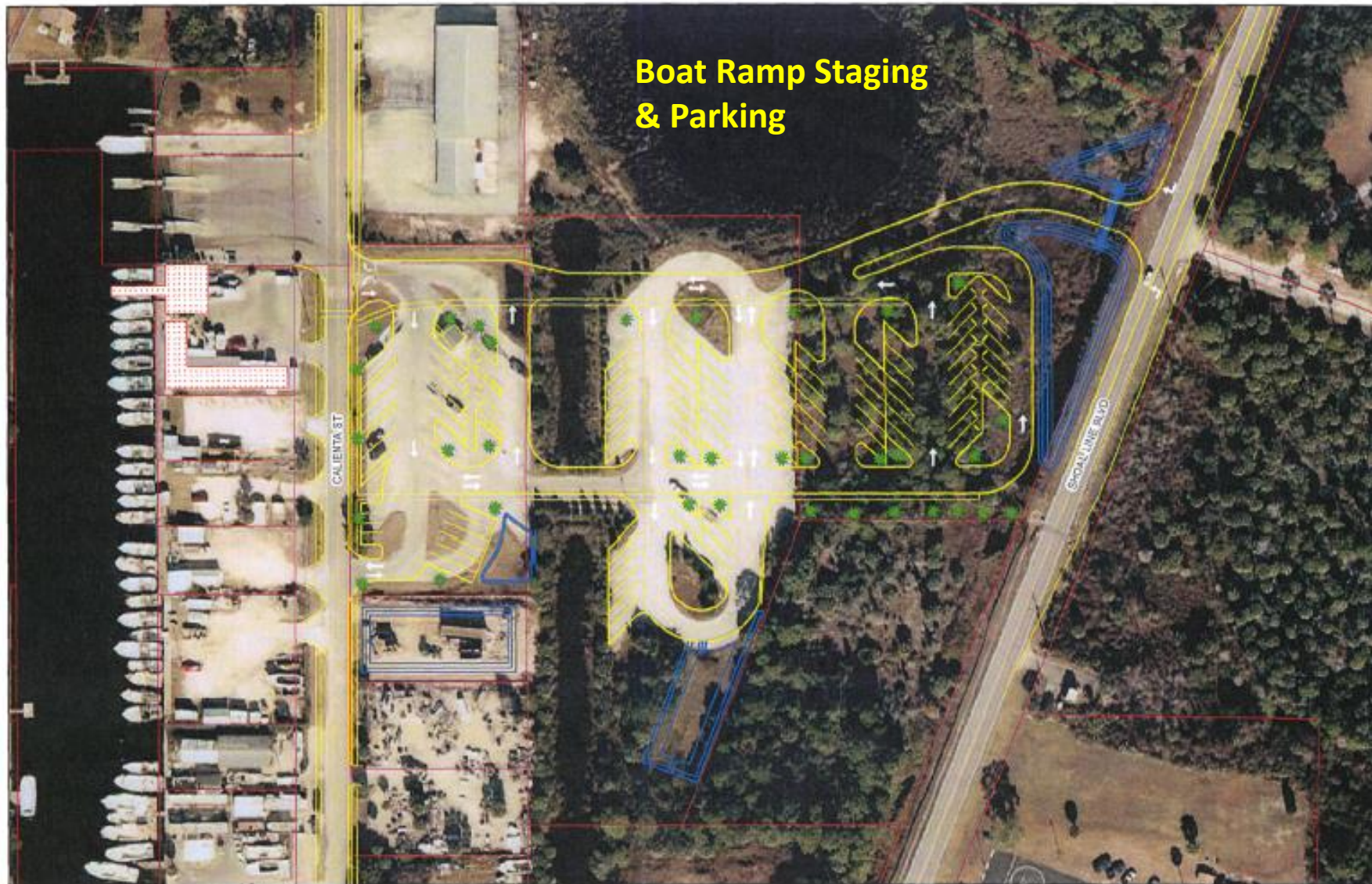




**Stormwater Run Off  
Calienta  
(Budgeted for 2020)**

**Diane M. Greenwell  
Created 12/21/19**





## Boat Ramp Staging & Parking

### Hernando Beach Boat Parking Proposed Expansion

Scale - Not To Scale  
Mapped by - Dept. of Public Works/Engineering Div.  
Map Date - 5/15/2016



Hernando County Geographic Information System (GIS)  
Standard Legal Description

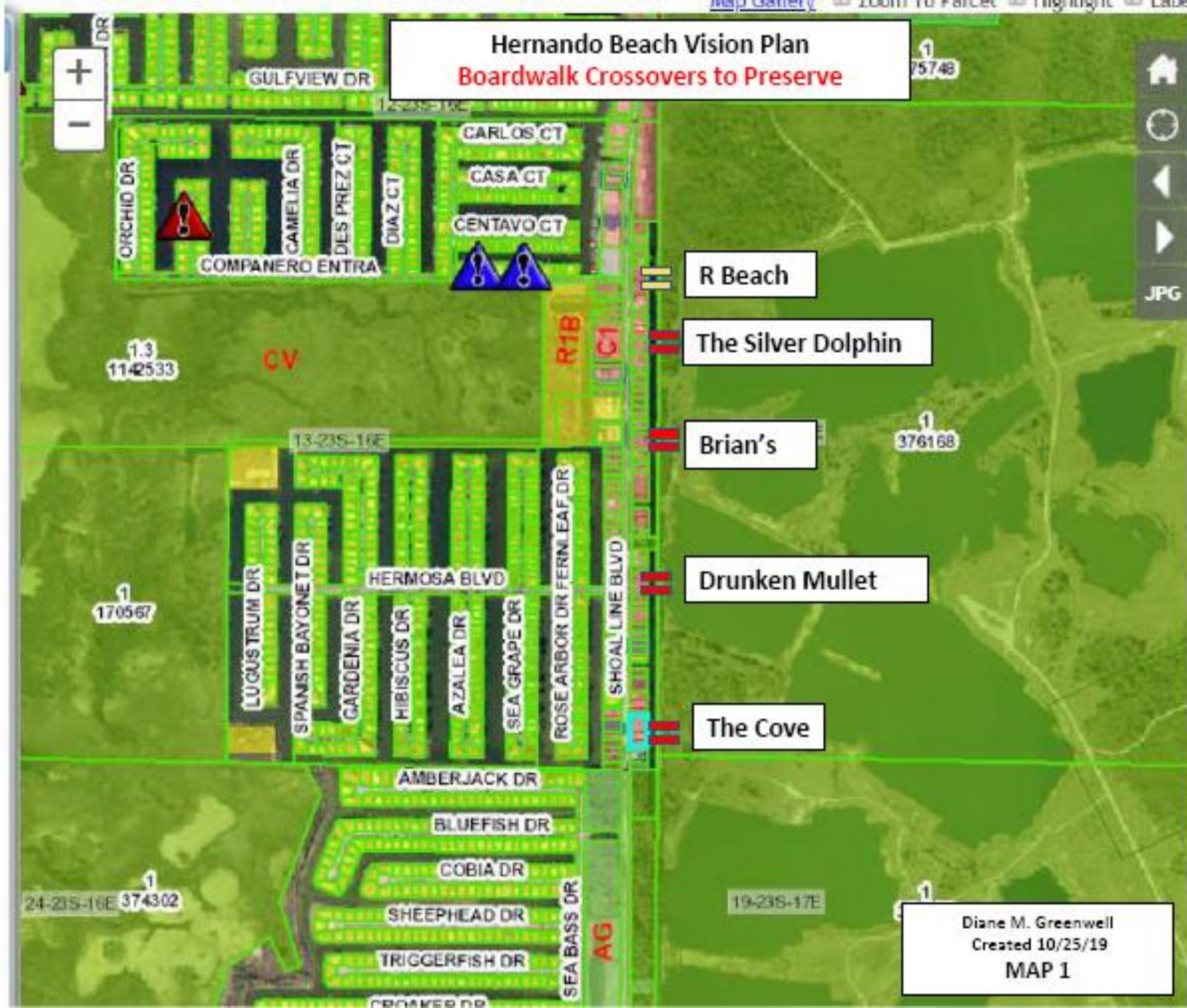
"The information in this database or as represented upon a digital or hard copy format is compiled and/or generated for internal County purposes, is not necessarily official, and may not reflect the most recent changes. Accordingly, use of this information is at the user's own risk, and Hernando County hereby disclaims any liability for claims, damages, injury, or loss of any kind resulting from use of, or reliance upon, the information herein for any purpose whatsoever."

5/27/16 Brian Malmberg, Mark Guttman, Fred P. La Pina, Public Works Project Meeting,









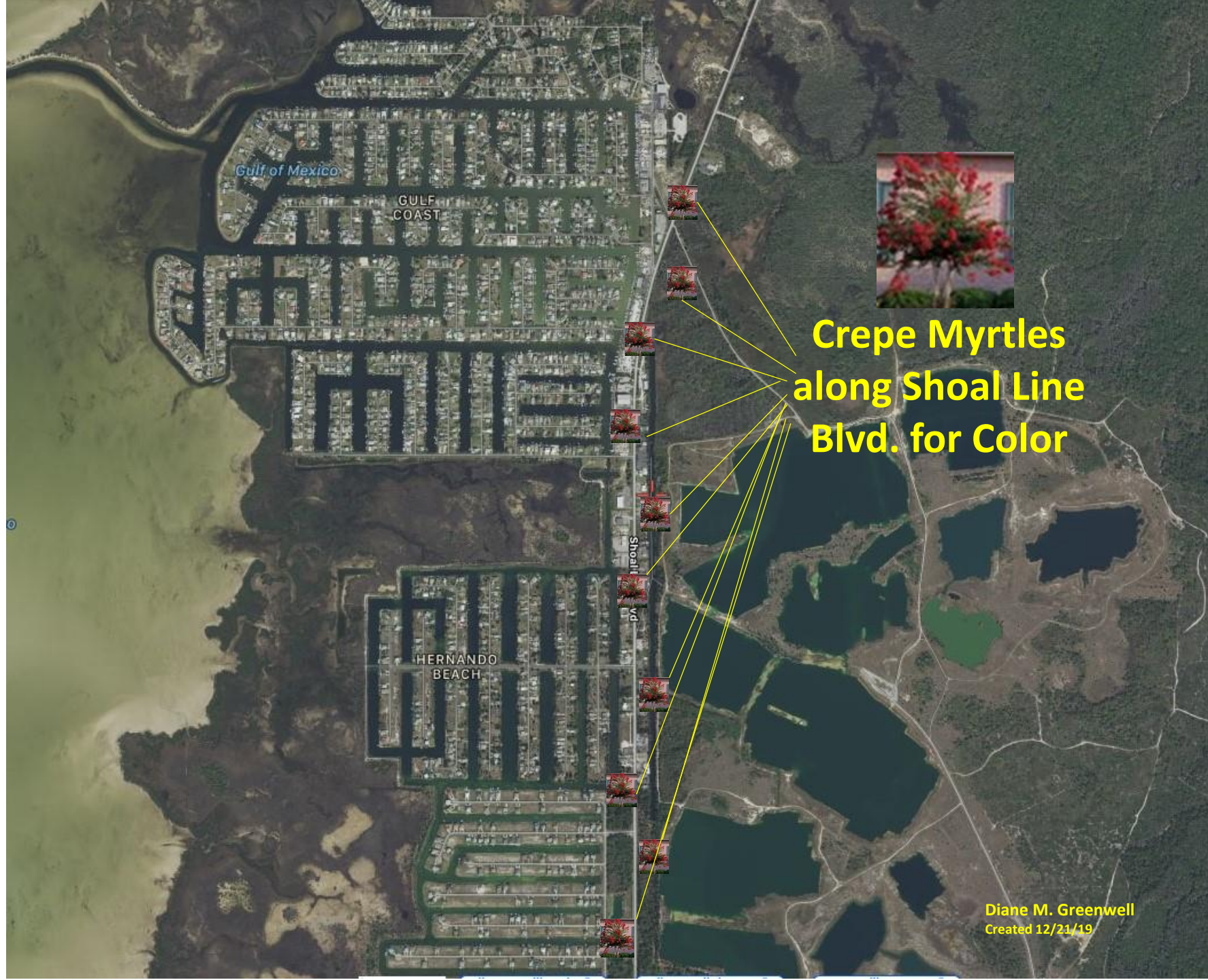


**Boardwalk  
Behind Commercial  
Businesses on East Side of Shoal  
Line Blvd. Connecting with  
Boardwalk to Linda Pedersen  
Park**



Diane M. Greenwell  
Created 12/21/19





Gulf of Mexico

GULF  
COAST

HERNANDO  
BEACH

Shoal  
Line  
Bvd

**Crepe Myrtles  
along Shoal Line  
Blvd. for Color**

**Diane M. Greenwell**  
Created 12/21/19





**Commercial Marine  
CM-2**  
(All commercial  
Fishing Vessels over 26',  
Commercial  
Processing and/or Commercial  
Fishing Activity)

Diane M. Greenwell  
Created 12/21/19






## Commercial Recreational Charters C-1

Restricted size, usage, hours of operation





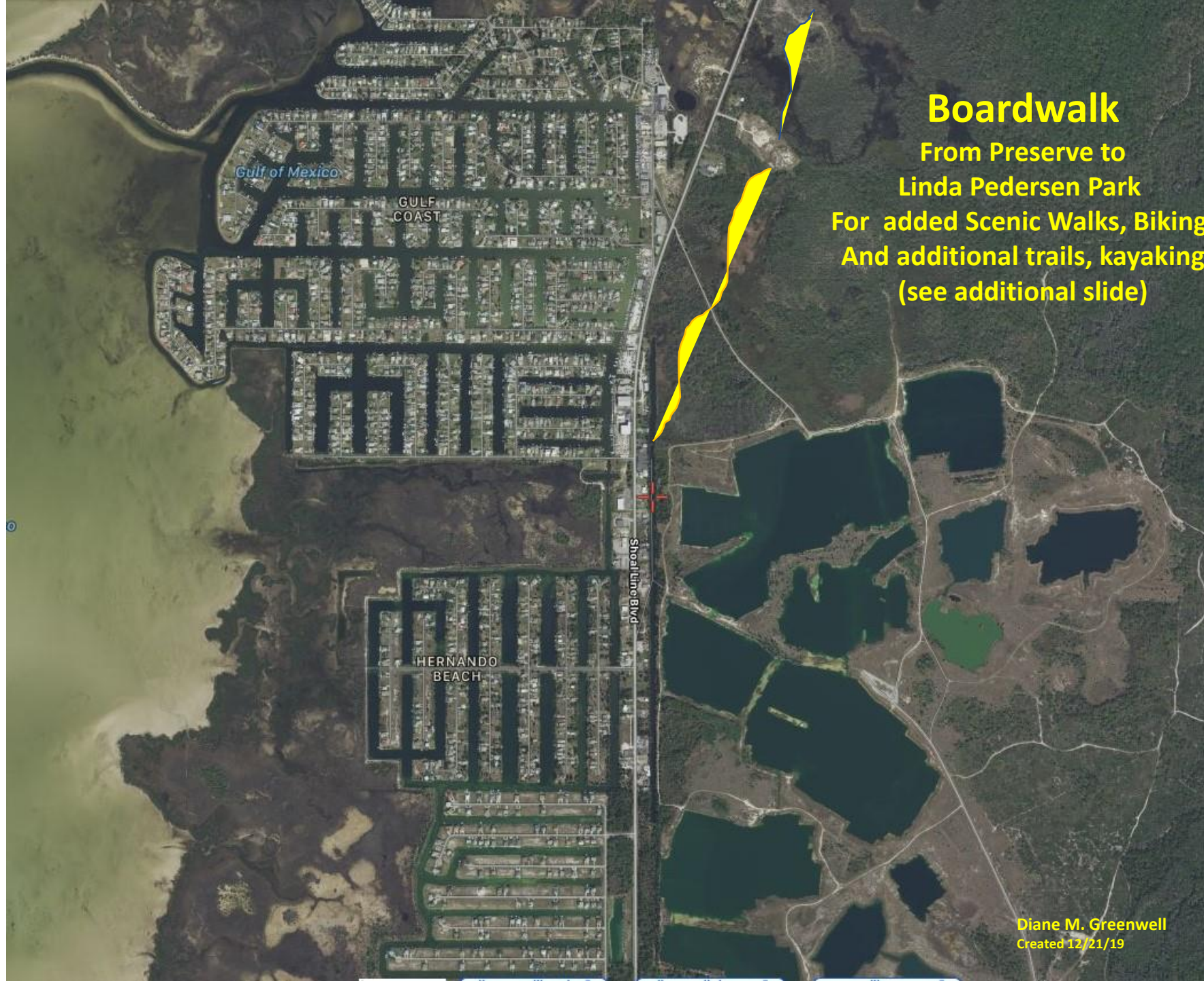
**Change rear and side setback requirements on Commercial Properties on Shoal Line Blvd. & Calienta Street to allow maximum use of properties.**





**Dedicate the 56 acre  
Water Tower Property  
To Hernando Beach for  
Use as a park: Bocce  
Ball, Dog Park, Volley  
Ball, Parking for Preserve**

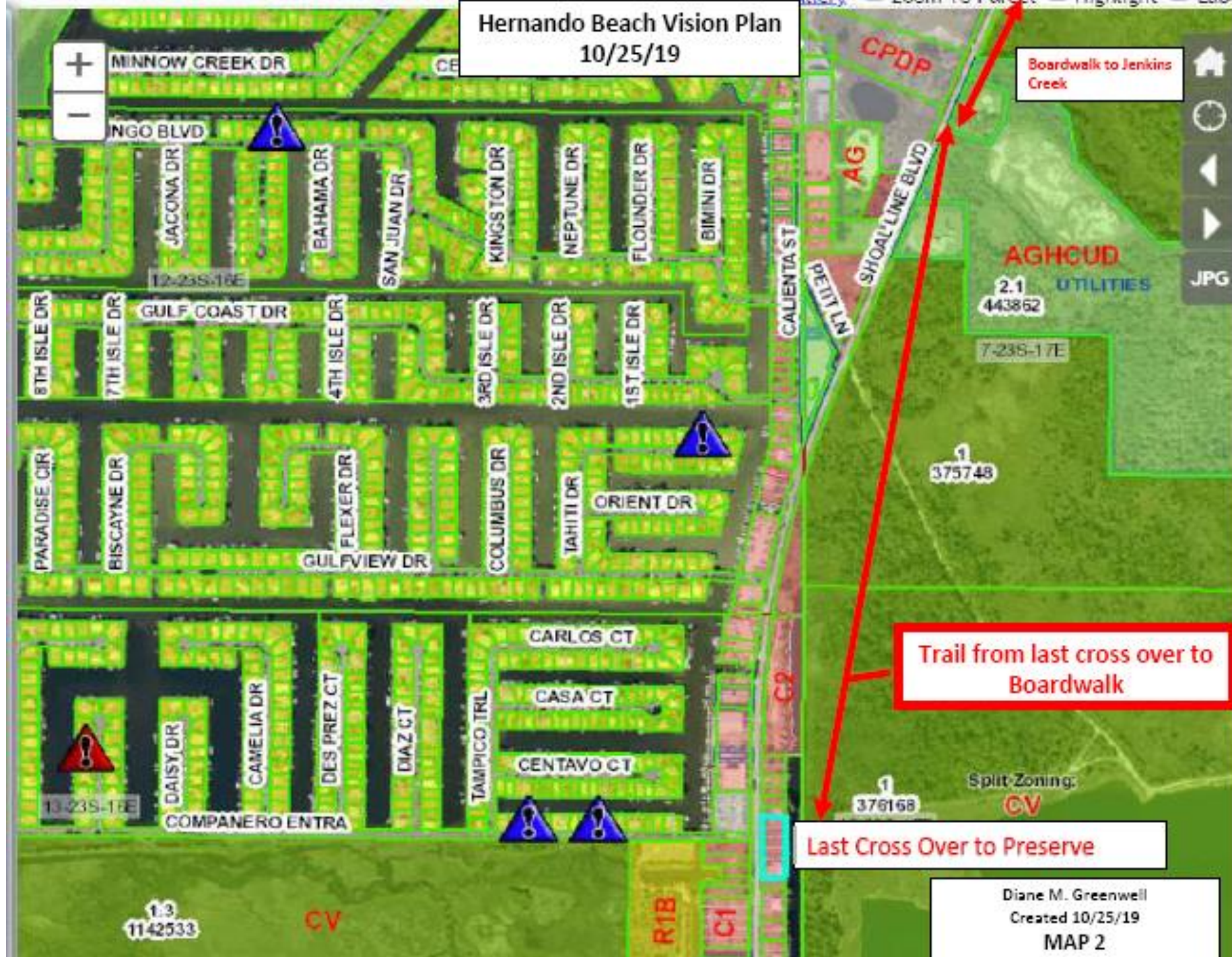




## Boardwalk

From Preserve to  
Linda Pedersen Park  
For added Scenic Walks, Biking,  
And additional trails, kayaking  
(see additional slide)







Hernando Beach Vision Plan  
10/25/19



Boardwalk from Water Tower to  
Jenkins Creek – 1 mile

Diane M. Greenwell  
Created 10/25/19

MAP 3





## Waterways & Marine Research Center

With University of Florida  
For Water Testing, Weather Monitoring,  
Education, and Training





## Trolley Bus

Scenic Highway Tour (Shoal Line Blvd)

Pine Island

Bay Port

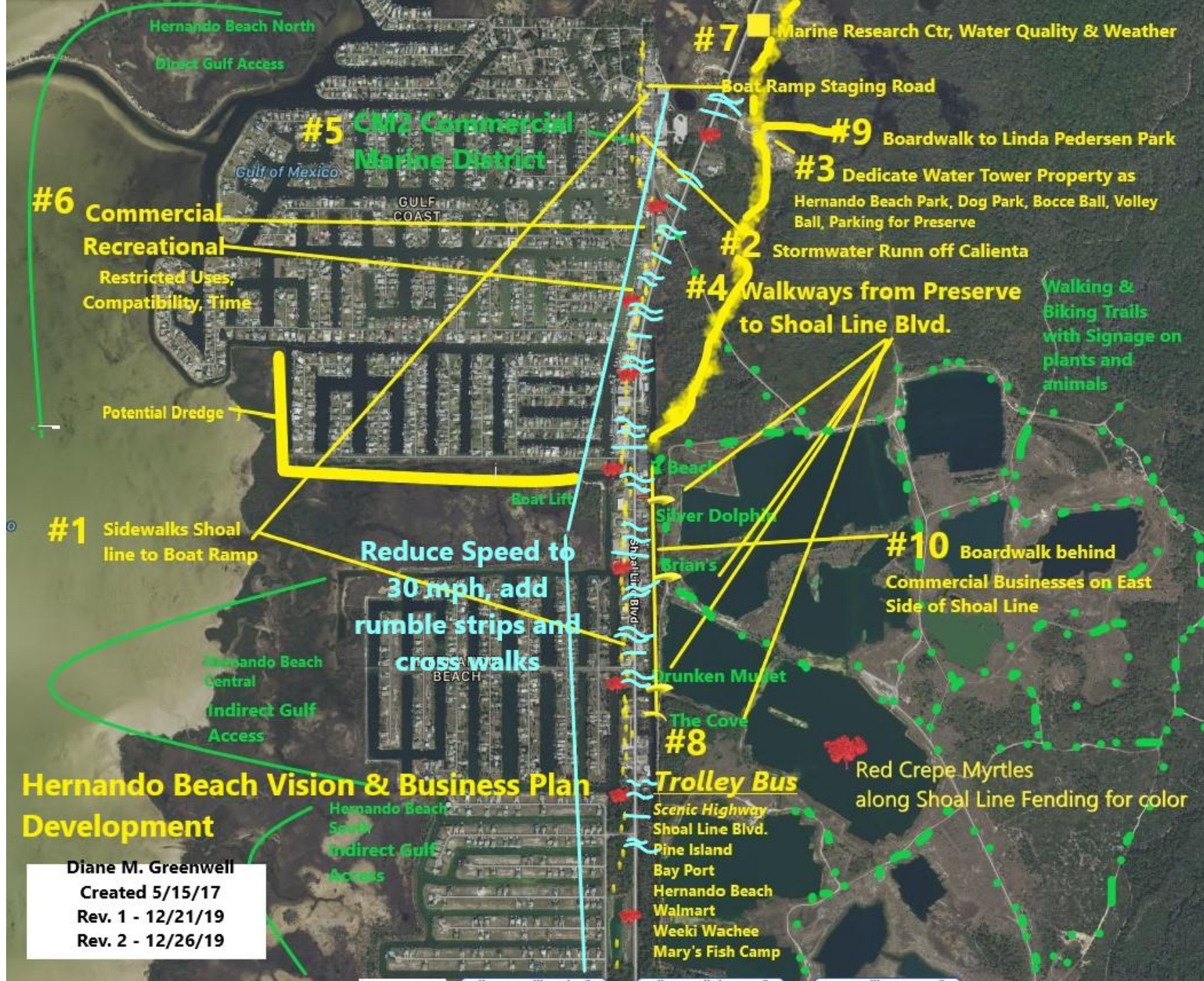
Hernando Beach

Weeki Wachee

Mary's Fish Camp

Diane M. Greenwell  
Created 12/21/19





## Hernando Beach Vision & Business Plan Development

Diane M. Greenwell  
Created 5/15/17  
Rev. 1 - 12/21/19  
Rev. 2 - 12/26/19