



Residents Against Western Sydney Airport Incorporated

Blaxland NSW
Email: info@rawsa.info

Hon. Brad Hazzard. MLA
NSW Minister for Health
52 Martin Place
SYDNEY NSW 2000

Trevor Neal
13 Stansbury Street,
Emu Plains. NSW 2750

10th July 2018

Dear Minister,

On behalf of Residents Against Western Sydney Airport (RAWSA), I am writing to enquire about plans that the NSW Department of Health has established to counter the adverse health impacts from the operation of a Western Sydney Airport (WSA) at Badgerys Creek.

With the recent Federal Government announcement to start construction of WSA, it is an appropriate time to seek your advice on the inevitable implications this project will have on the health of Western Sydney residents and the associated impacts the operation of WSA will have on the demand for increased NSW health services and the finance needed to meet that increased requirement.

The WSA Environmental Impact Statement acknowledged that the operation of WSA that adverse health impacts would be suffered by western Sydney communities, but stated that these impacts were assessed as being within acceptable limits. Our communities dispute these impacts as being 'acceptable' and wish to highlight implications for NSW Health of the increased occurrence of childhood asthma, adult heart disease, lung cancer, respiratory disease, and mental disorders.

As evidence of this I offer the following information on current health problems that will be exacerbated by WSA operations, in years to come.

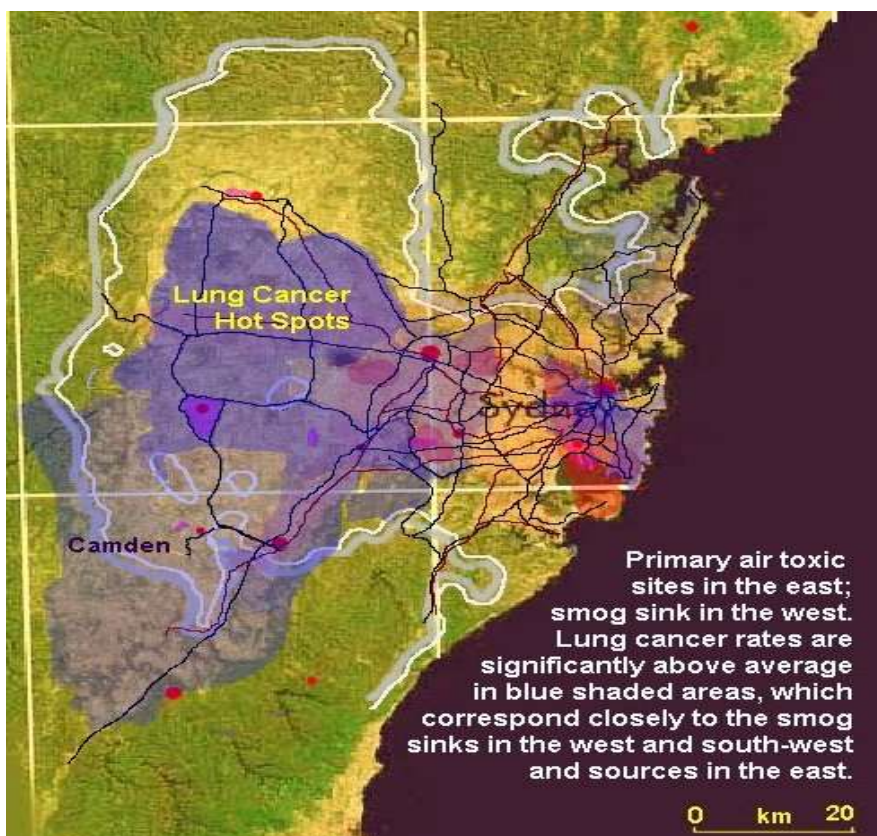
Lung Cancer in the Sydney Basin¹.

The Sydney basin is a classic "closed" basin, bounded by high ground to the south, west and north, and by the temperature differential between land and ocean on the eastern side. Trapped pollution may accumulate and circulate inside the basin for several days exacerbated by relatively frequent temperature inversions.

Sydney's highest lung cancer occurrences are found at the primary pollution sources in the eastern part of the basin (*around Sydney Airport*) and in the western Sydney basin pollution sink area.

¹ <http://condellpark.com/bear/smogbasin.htm#References>

Higher than NSW State average lung cancer patterns shown in dark blue on the Map below are sourced from NSW Cancer Council.



Blue shading represent local government areas (LGA's) where rates of lung cancer are significantly higher than state averages. Darker blue shading represents significantly higher than average rates; lighter intensity blue are higher than average rates.

Aircraft Noise Impacts on Health

Appearing in the British Medical Journal²

... "according to a new study from Harvard School of Public Health (HSPH) and Boston University School of Public Health (BUSPH). Researchers found that, on average, zip codes with 10-decibel higher aircraft noise had a 3.5% higher cardiovascular hospital admission rate.

Another study from the Deutches Arstblatt International³, found the following;

In residential areas, outdoor aircraft noise-induced equivalent noise levels of 60 dB(A) in the daytime and 45 dB(A) at night are associated with an increased incidence of hypertension. There is a dose-response relationship between aircraft noise and the occurrence of arterial hypertension. The prescription frequency of blood pressure-lowering medications is associated dose-dependently with aircraft noise from a level of about 45 dB(A). Around 25% of the population are greatly annoyed by exposure to noise of 55 dB(A) during the daytime.

² British Medical Journal – Online article, October 8, 2013

³ <http://www.ncbi.nlm.nih.gov/pmc/articles/PMC2696954/>

To ensure brevity, this letter highlights just two of the numerous studies available to show the health impacts of airports. Added to this pollution scenario, the impact of aircraft noise provides a cocktail of implications on both, the mental and physical health outcomes for western Sydney from WSA operations.

The broader implication for the NSW Government and in particular the Department of Health, is the impact this airport will have on not only deteriorating health outcomes, but the significant financial impact on the NSW health budget.

I would therefore be appreciative of advice from you on plans your Government has to:

- Address the inevitable health impacts from the WSA project,
- Provide the additional health facilities and services that will be required in western Sydney to meet the impacts caused by this project, and
- Recover the added cost burden on the NSW Budget, from the Federal Government, the airport operator and the aviation industry.

I thank you for your consideration of this letter and look forward to your responses to the issues raised in it.

Yours sincerely,



Trevor Neal
Secretary
RAWSA
Residents Against Western Sydney Airport