



Quality Wholesale Window Coverings
Contract • Hospitality • Healthcare • Residential

STYLE
4650 / 4550

WEAVING
EXCELLENCE
WITH
INNOVATION



		SOLAR OPTICAL PROPERTIES				SHGC/G VALUE g-tot (glass & blind)	
Code	Color	TS	RS	AS	TV	SINGLE 1/4 CL	INSULATING 1 HA
STYLE 4650 - 3%							
P10	Granite	6	55	39	8	0.33	0.24
P65	Linen	7	58	35	8	0.31	0.23
V45	Coal	5	47	48	7	0.37	0.26
V47	Chestnut	7	48	45	8	0.37	0.26
STYLE 4550 - 5%							
P10	Granite	7	56	37	8	0.33	0.24
P65	Linen	9	59	32	10	0.32	0.23
V45	Coal	8	48	44	9	0.37	0.26
V47	Chestnut	9	48	43	11	0.37	0.26



PROTECTION THAT LIVES ON
MICROBAN

Microban® antimicrobial protection inhibits the growth of stain-causing bacteria, mold and mildew on the shade.



PRODUCT CERTIFIED FOR
LOW CHEMICAL EMISSIONS
UL.COM/GG
UL 2818



MIF Seal of Approval



TS = Solar Transmittance
RS = Solar Reflectance
AS = Solar Absorptance
TV = Visual Transmittance

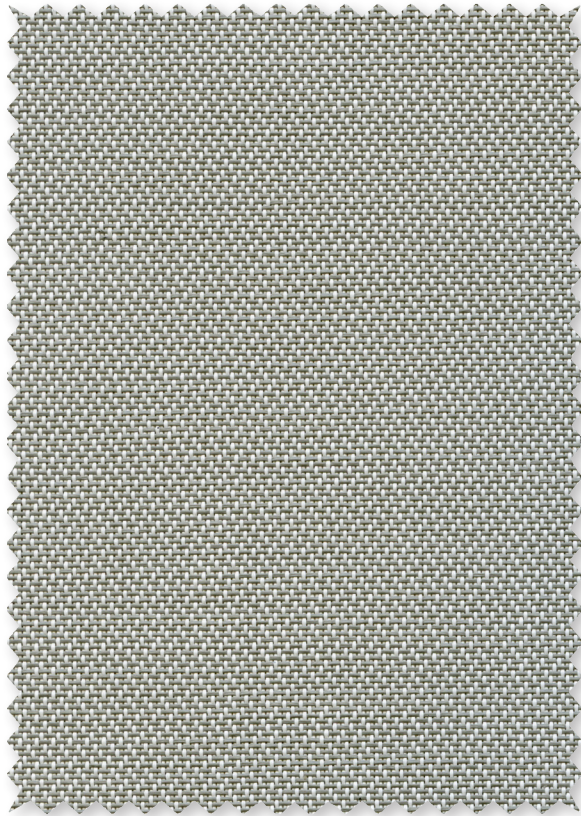
SHGC = Solar Heat Gain Coefficient

1/4 CL = 1/4" Clear Glass
1 HA = 1" Heat Absorbing Glass

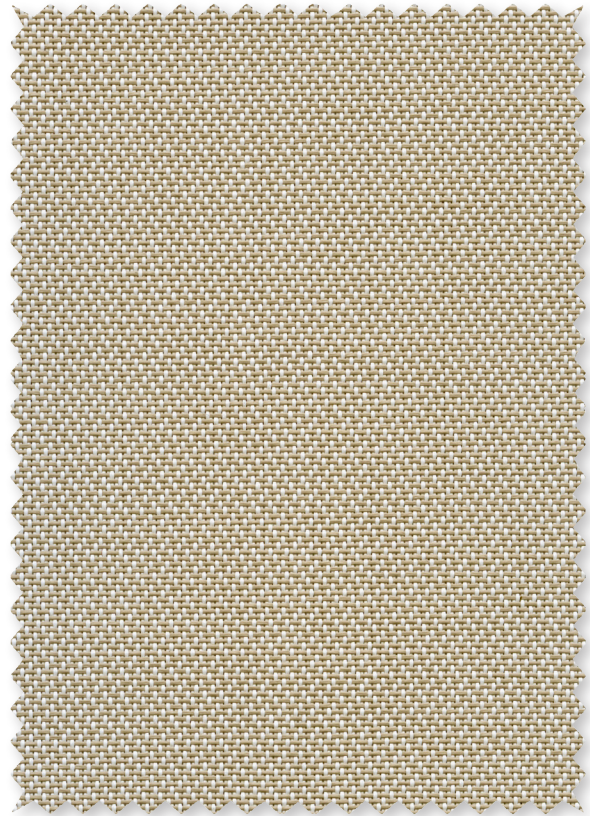
Fabrics Installed Internally
Zero-Degree Profile Angle

For additional performance values, test references and technical definitions visit us at www.phifer.com.

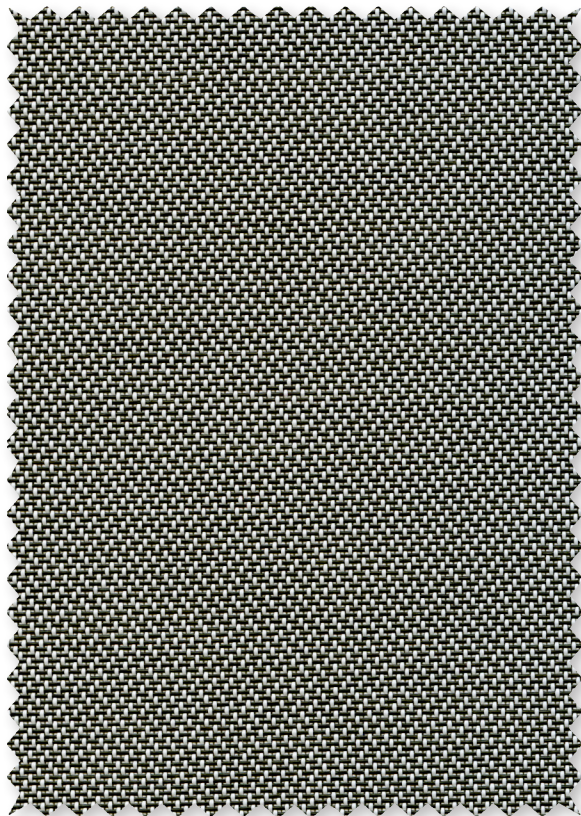
P10 Granite



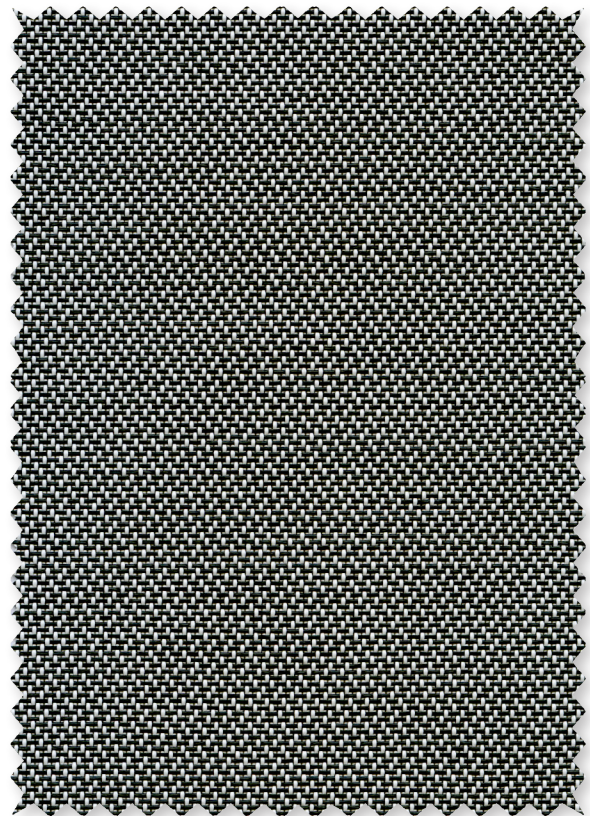
P65 Linen



V47 Chestnut



V45 Coal



STYLE 4650 / 4550 SPECIFICATIONS

Using thin polyester yarns and a unique twill weave, Styles 4650 and 4550 are easy to fabricate and offer a distinct two-sided appearance that maximizes both visibility and solar heat reduction. Style 4650/4550 can also be used in exterior roller shades.

FIRE CLASSIFICATION	California U.S. Title 19 (small scale)	BS 5867 Part 2 Type B Performance
	NFPA 701 TM#1 (small scale)	CAN/ULC-S 109 (large and small scale)
	NFPA 701 TM#2 (large scale)	IBC Section 803.1.1 (Class A Rating)
	NFPA 101 (Class A Rating)	

Fire classifications are subject to change. It is the user's responsibility to check for the most current fire ratings at phifer.com.

BACTERIA AND FUNGAL RESISTANCE	ASTM E 2180	ASTM G21	AATCC30 Part 3	ASTM D 3273	ASTM G22
	GREENGUARD Mold and Bacteria Standard ASTM 6329 includes Microban antimicrobial additives				

ENVIRONMENTAL CERTIFICATION	GREENGUARD	GREENGUARD Gold
	Certified to these standards for low chemical emissions into indoor air during product usage	

LEAD FREE	RoHS/Directive 2002/95/EC	REACH (EC 1907/2006) compliant
	ANSI/WCMA A 100.1-2007 for lead content	
	US Consumer Product Safety Commission Section 101	

WARRANTY	10-year interior	5-year exterior
-----------------	------------------	-----------------

ACOUSTICAL PERFORMANCE	NRC (Noise Reduction Coefficient) and SAA (Sound Absorption Average) tested in accordance with ASTM C423-09a	
-------------------------------	--	--

Seal of Approval by the Melanoma International Foundation (MIF) for effectiveness in preventing sun damage to the skin or eyes

STYLE	4650	4550
WIDTHS	63" and 98" 160 cm and 248.9 cm	63" and 98" 160 cm and 248.9 cm
ROLL LENGTH	30 Linear Yards 27.4 m	30 Linear Yards 27.4 m
COMPOSITION	17% Polyester 83% Vinyl on Polyester	17% Polyester 83% Vinyl on Polyester
MESH WEIGHT	13.3 oz/yd ² 450.96 g/m ²	13.0 oz/yd ² 440.78 g/m ²
FABRIC THICKNESS	0.026 in 0.66 mm	0.025 in 0.64 mm
OPENNESS FACTOR	Approximately 3%	Approximately 5%
UV BLOCKAGE	Approximately 97%	Approximately 95%
ACOUSTICAL VALUE	NRC .15 / SAA .18	NRC .10 / SAA .11

PHIFER
INCORPORATED

P. O. Box 1700 • Tuscaloosa, Alabama 35403 -1700 USA
Phone: 205.345.2120 • FAX: 205.391.0799
Toll Free USA/Canada: 1.800.221.5497
phifer.com • ISO Registered



© SheerWeave is a registered trademark of PHIFER INCORPORATED.
© MICROBAN is a registered trademark of Microban Products Company.
™ UL, the UL logos and the UL mark are trademarks of UL LLC.
Photo courtesy of HUNTER DOUGLAS, South America.
© PHIFER INCORPORATED V18 101718 3033836