



RE: Utility Improvements for property at 525 Osborne Road.

Dear Resident:

The city is completing a sewer and water installation project to facilitate the development of the property at 525 Osborne Road. This property will be the site of a new one-story 32 unit assisted living/memory care facility. Sewer and water facilities need to be extended from Terrace Road to the 525 Osborne Road site in order to provide city service to this property. As part of the sewer and water project, the city will take the opportunity to connect existing dead-end water mains in Springcrest Estates and at the Osborne Apartments. Connecting the Springcrest Estates and Osborne Apartments dead-end water mains will improve the water flow, reliability, and available fire protection flow for the area.

Construction of the sewer and water improvements will occur within an existing utility easement. There are many trees located within the easement. The City has decided to install much of the water main with "trenchless construction" in an effort to save as many trees as possible. Trenchless construction means that the contractor will bore (tunnel) much of the water main installation. With this construction method some excavation still needs to occur to make pipe connections etc. Up to six trees may need to be removed as part of the construction. The contractor will make every effort to avoid tree removal where feasible.

Construction will also include temporary shutdown of Terrace Road for water main and sewer connections. Advanced road signing will be installed prior to the road closures.

The construction will occur this October. The tentative schedule provided by the contractor includes:

Week of October 5th – Site preparation and set up groundwater dewatering.

Week of October 12th – Layout of new water main pipe, directional drill install pipe, and watermain pipe connections.

Week of October 19th – Complete water main pipe connections, testing, and sewer installation.

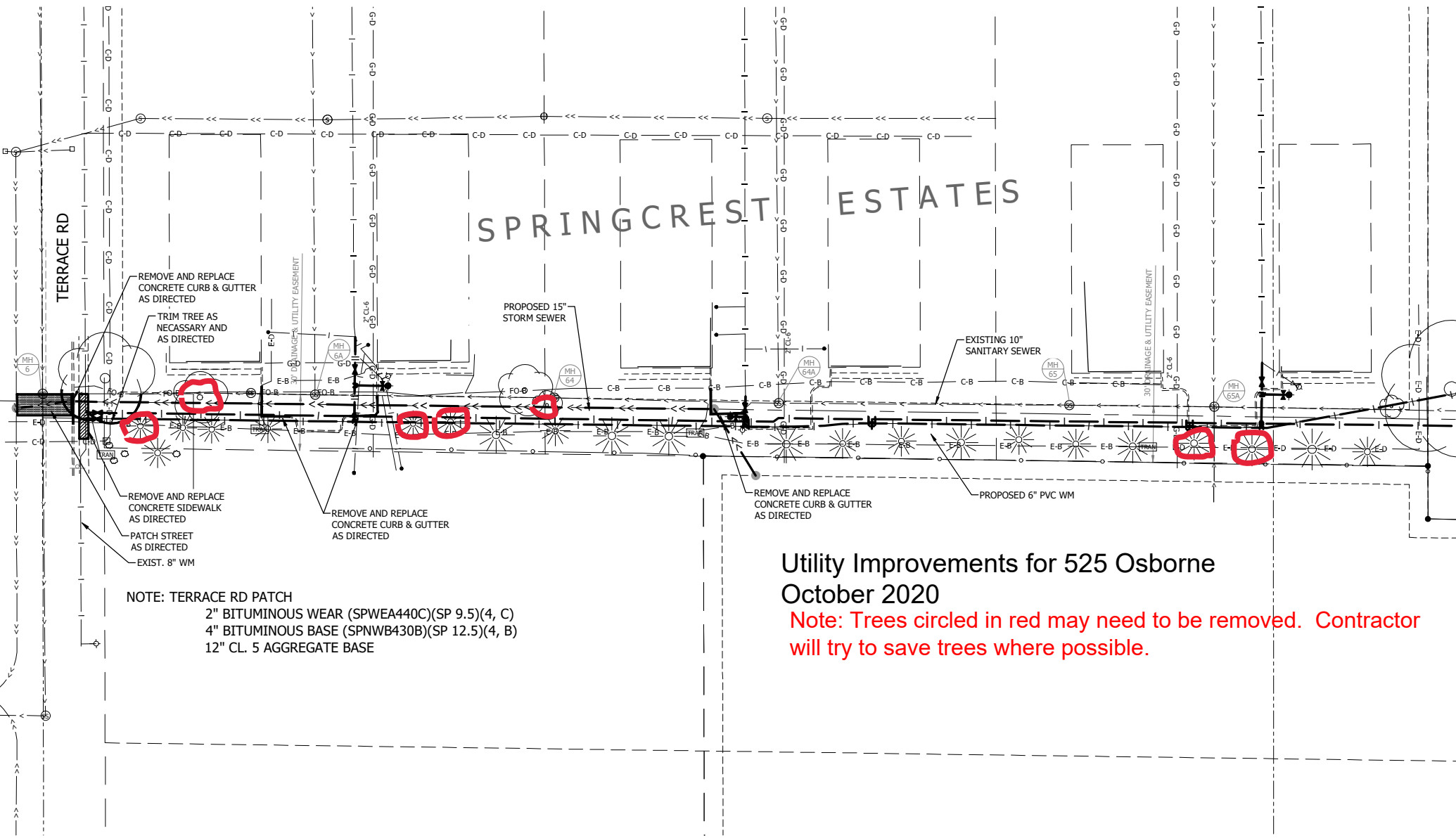
Week of October 26th – Bituminous patching, site final cleanup, and restoration.

Additional information and project updates can be obtained by viewing the City's website at www.slpmn.org or the City's Facebook page. If you have any questions, please contact either Public Works Director Terry Randall at 763-360-4973 or City Administrator Daniel Buchholtz at 763-784-6491.

Thank you for your understanding and cooperation in this matter.

Sincerely,

Daniel R. Buchholtz
Administrator, Clerk/Treasurer



SPRINGCREST ESTATES

TERRACE RD

REMOVE AND REPLACE CONCRETE CURB & GUTTER AS DIRECTED
 TRIM TREE AS NECESSARY AND AS DIRECTED

PROPOSED 15" STORM SEWER

EXISTING 10" SANITARY SEWER

REMOVE AND REPLACE CONCRETE SIDEWALK AS DIRECTED
 PATCH STREET AS DIRECTED
 EXIST. 8" WM

REMOVE AND REPLACE CONCRETE CURB & GUTTER AS DIRECTED

REMOVE AND REPLACE CONCRETE CURB & GUTTER AS DIRECTED

PROPOSED 6" PVC WM

NOTE: TERRACE RD PATCH
 2" BITUMINOUS WEAR (SPWEA440C)(SP 9.5)(4, C)
 4" BITUMINOUS BASE (SPNWB430B)(SP 12.5)(4, B)
 12" CL. 5 AGGREGATE BASE

Utility Improvements for 525 Osborne October 2020

Note: Trees circled in red may need to be removed. Contractor will try to save trees where possible.