

Connelly Angus Ranch

Genetics for the Long Run

Production Sale

Tuesday, February 25, 2025

At the Ranch in Valier, MT

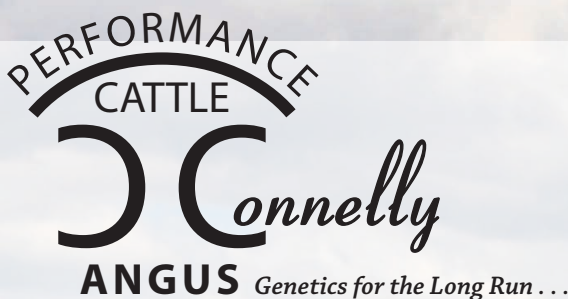
Sale Starts at 1 pm



**— Selling —
120 Yearling Bulls**

1950 Dean Road
Valier, MT 59486

connelly@3rivers.net
www.connellyangus.com



Don Connelly
406/ 279-3569
406/ 899-3826
Matt Connelly
406/ 391-7773

Welcome to Connelly Angus!

Welcome to our 34th Annual "Genetics for the Long Run" Production Sale. This year will be our 50th year in the seedstock business. This year's sale offering promises to be one of the most exciting ever. The bulls selling represent the top 48% of the calf crop.

As I look back on the year 2024, It was a dry son of a gun here with the poorest hay crop put up in my lifetime. We did get some decent rain in late august to help keep the grass going somewhat on our pastures. Our cattle must get by on what mother nature dishes out without any supplements. This is a testament to the fertility and longevity of our cowherd and the genetics we sell. We are very proud to show proof of this by 17% of our programs cowherd aging 10 to 18 years old and still in production. In addition, our open rate this past year was 4 %. Fertility and longevity do yield huge returns when compared to all the other numbers and extremes the industry is chasing.

When you look at all the different agriculture commodities out there, the cattle business has the most positive outlook for the future. When you study the dynamics of the industry, the future looks promising with some really good years ahead for the rancher to enjoy.

A high percentage of the bulls selling are calving ease bulls that will work great on both heifers and cows without giving up weaning weights or performance. There is also a group of high-performance bulls for the cows that will certainly give you that extra bump in weaning weights.

Our breeding philosophy has always been centered around producing problem free females with excellent longevity that can survive and excel in a commercial rancher's environment. This can only be accomplished with females that have excellent structure, feet, superior udder and teat qualities. We believe in a moderate framed cow that milks well while holding her condition and can consistently wean off a heavy calf. In our program, we place high emphasis on fertility, carcass quality, natural thickness, maternal traits, fast growth, quiet dispositions and moderate birth weights. At Connelly Angus we have been stacking cow families with these characteristics to produce an elite cowherd that can produce a consistent and quality product. We are focusing on bloodlines that leave you with females that can bring in a good calf year after year for the long run. You cannot build a cowherd and get ahead with a high percentage of open young cows.

We did not receive carcass data back on our steers again this past year. In the past our steers carcass data came back with the group grading 100% choice and 26% prime. This shows our cattle have the carcass genetics to improve any program.

The bulls have been developed on a high roughage ration to grow out, NOT FATTEN. Their ration was designed for a 2.75-pound ADG. They are very athletic and should be able to cover a lot of country. All bulls will be veterinary inspected, and semen tested before sale day by Dr Barr Gustafson, DVM.

We have decided to utilize genetic enhanced EPD's through HD50K DNA technology on the entire sale offering again this year. You can read more about this on page 4 of this catalog.

Our sale will be broadcast on DV Auction this year for those who cannot attend the sale. We also have a limited number of phone lines to utilize if you would like.

All cattle sell with the Connelly Angus guarantee. If you are unable to attend the sale, we offer a sight unseen satisfaction guarantee on the sale offering. We invite you to come join us on Tuesday, February 25 and have lunch, visit and enjoy the day. All cattle are available for your inspection at the ranch before the sale and on video at our website. If we can offer any additional information or assistance, feel free to contact us.

Sincerely,
The Connellys

***Everyone is invited to a
Pre-Sale CAB Prime Rib Dinner
Monday, February 24, 6:00 pm
at the Ranch, North of Valier.***

Cattle are available for preview all day before dinner.



Matt, Harley, Don, Wendy, Chantz, Skylar and Mikayla

Connelly Angus Ranch

Genetics for the Long Run
Production Sale

Tuesday, February 25, 2025

At the Ranch in Valier, MT
Sale Starts at 1 pm

— 120 Angus Sell —

120 Long, Thick, Stout Yearling Bulls
(the top 50% of the calf crop)

Videos of the sale cattle available at
www.connellyangus.com
www.DVAuctions.com

Sale Day Phones

406/ 279-3569 Home
406/ 899-3826 Don
406/ 391-7773 Matt

Volume Discounts

2 Bulls - 2% Discount, 3 Bulls - 3% Discount
4 Bulls - 4% Discount
and continuing up to 10 or more bulls - 10% Discount

Schedule of Events

Monday, February 24, 2025

- All sale cattle & cowherd available to look over
- Be our guest for pre-sale CAB Prime Rib dinner,
6:00 pm at the Ranch

Tuesday, February 25, 2025

- Complimentary lunch will be served at 11:30 am
- Sale Time 1:00 pm

Sale Order Selling by catalog order.

Free delivery on bulls in Montana and adjoining states. Beyond at actual cost. \$50 discount per bull if you pick up within a week of sale day. Heifers delivered at cost.

All bulls are fertility tested, veterinary inspected. Entire offering tested free of known defects identified by the American Angus Association, or has no pedigree risk.

Semen Interest Connelly Angus is retaining one-third revenue sharing semen interest on every bull selling in this sale. Full possession and full salvage value sells on all bulls.

Terms and Conditions

This sale is being conducted under the suggested sale terms and conditions adopted by the American Angus Association.

Inspection The cattle are ready for inspection at your convenience. Visitors are welcome at anytime.

Travel and Accommodations Air Travel: Great Falls is served by Delta, Alaska, Allegiant and United Airlines. It is about a 90 minute drive to Connelly Angus.

Stone School Inn, Valier 406/ 279-3796
Super 8 Motel, Conrad 406/ 278-6519
Crossroads Inn, Shelby 406/ 434-5134
Lake Frances Inn, Valier 406/ 279-3476

- Buyers unable to attend the sale -
We offer a sight unseen satisfaction
guarantee on sale offerings

DV Auctions will be assisting those unable to attend the sale this year. Please see page 2 for details.

Bids can be phoned into auctioneer or the owners.

Announcements from the auction block take precedence over information in this catalog.

Representatives

Roger Jacobs.....Auctioneer
406/ 698-7686 or 406/ 373-6124
Kurt Kangas.....American Angus Association
406/ 366-4190
Matt Wznick..... Western Ag Reporter
406/ 489-2414
Devin Murnin Western Livestock Journal
406/ 696-1502
Andy Rest..... Cattle Business Weekly
406/ 670-5678

Liability: Everyone attending this sale does so at his own risk and without liability on the part of the owners or their employees.

EPDs are current as of 2/3/25
Updated EPDs can be viewed at www.angus.org

Please bring this catalog to the sale!



Common Sense Ranching

At Connolly Angus we have always bred cattle realizing that the Angus female is the key to making the most out of your ranch's operation. We have focused on bloodlines and cow families that have proven bred in longevity.

We strive to breed cattle that will excel and survive in a low input environment not cattle in a artificial environment with extra supplements, creep feed and extra management. When mother nature gives you a good year, the calves will really weigh up for you. More importantly in those dry tough years if your cow herd has the right genetics, your cows can still bring in a good calf and breed back on time without those costly extra inputs. The wrong bloodlines and/or high powered, high input genetics can really cost you in those tough years if you want them to stay in your herd and avoid a high percentage of open cows. There are plenty of high input genetics out there that will cost you lots of extra dollars in the good years!

We take pride in proving to our customers the history behind the bulls they buy. You will find ratios on all the measurements we take in developing the bulls. You will find generations of cow production records behind the bulls to help aid in your selection. We believe the best genetics are found over time through a cow producing a good calf year after year through ten plus years while maintaining soundness & udder quality and proving there is actual bred in longevity. There are great financial rewards in using the right genetics.

When you buy a bull for your program without any performance ratios or cow family history, you really have no idea what you are in for. You don't know if you are improving what you already have or in for a big costly disappointment down the road.

Survival in today's ranching atmosphere allows for few mistakes. Look to add the genetics to your program that will give you the biggest returns and keep you going for the Long Run!

First Year Breeding Guarantee

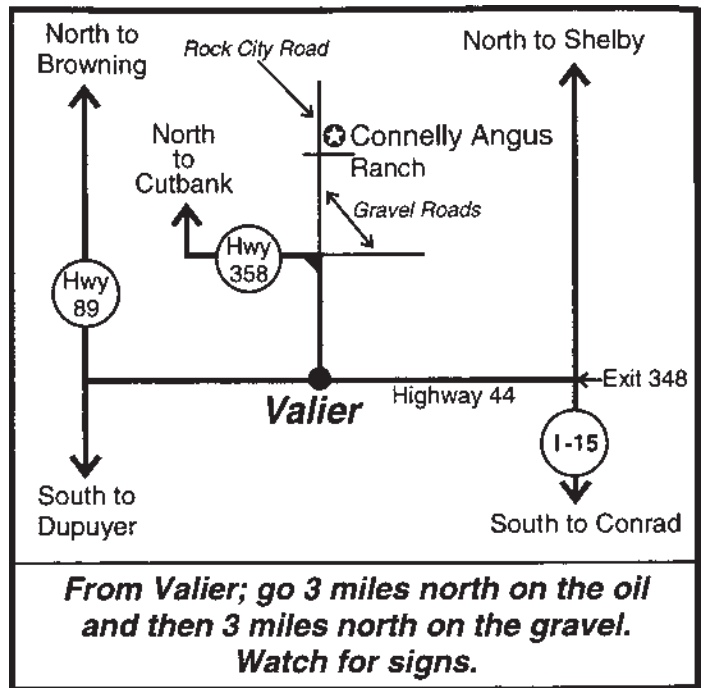
All bulls selling for \$3000 or more will be covered 50% by Connolly Angus, if they are injured during their first breeding season and not able to return to service during that first breeding season. Breeding season is defined as the 90 day period following the first turnout of the bulls.

50% of the value of the injured bull, minus one-half salvage value, will be given as credit in a future sale or toward a replacement bull if one is available. Salvage value, if any, will be split equally between Connolly Angus and the buyer. All injured bulls must be diagnosed by a veterinarian. Please notify us as soon as possible should injury occur and prior to the injured bull being sold for salvage. All claims must be made by September 1, 2025.

Example 1: A \$6000 bull is injured, a credit of \$3000 minus one-half any salvage value will be given to the buyer.

Example 2: A \$4000 bull is injured, a credit of \$2000 minus one-half any salvage value will be given to the buyer.

Example 3: A \$2500 bull is injured, no credit is given. Buyer retains all salvage value.



DVAuction

Watch & Bid Online for FREE!

Can't make the sale? Let DVAuction bring the sale to you!
Busy during the sale? Let DVAuction represent your bid!

Visit www.dvauction.com and Register!
It's as easy as 1, 2, 3...

1. Create and account at www.dvauction.com under the "create new account" tab
2. Apply for bidding by clicking "apply for bidding" in the upper left corner of your screen, at last 24 hours prior to the auction
3. Tune into the sale and make your purchases! *High Speed Internet Access Required

For General Questions Please Contact Our Office:
(402) 316-5460 or support@dvauction.com

Visitors are always welcome to stop by and see the cattle at any time.

Give us a call and we'll turn on the coffee pot!





Driving the science of better breeding

There's little room for error in the cattle business. Producers need the most advanced information to make smart selection decisions, and Angus Genetics Inc. (AGI) provides it through genomic-enhanced expected progeny differences (GE-EPDs).

GE-EPDs have become the industry standard for herd improvement, building on decades of science-backed genetic evaluation tools originated and maintained through the American Angus Association®, home to the largest and ever-growing single-breed beef cattle database.

EPDs that traditionally contained all pedigree, performance and progeny information now also include results from available genomic, or DNA, tests. Breeders who use genomic technology give buyers access to AGI-generated GE-EPDs that provide:

Increased predictability and decreased risk for young and unproven animals due to enhanced accuracy of EPDs

Better characterization of genetics for difficult-to-measure performance traits (such as carcass traits, maternal traits and feed efficiency)

The ability to make more rapid progress for traits that are important to you, due to:

- more accurate selection
- easier identification of genetic outliers
- the ability to propagate young animals with confidence earlier in their lives

In fact, GE-EPDs on unproven animals have the same amount of accuracy as if they had recorded 10-36 calves, depending on the trait. That's valuable insight, offered regularly through the breed's weekly national cattle evaluation.

Trait	Progeny Equivalent	Trait	Progeny Equivalent
Calving Ease Direct	26	Heifer Pregnancy	17
Birth Weight	23	Calving Ease Maternal	20
Weaning Weight	27	Milk	36
Yearling Weight	23	Mature Weight	15
Dry Matter Intake	12	Mature Height	9
Scrotal Circumference	15	Carcass Weight	15
Docility	12	Yearling Height	17
Claw Set	10	Carcass Marbling	11
Foot Angle	10	Carcass Ribeye	17
		Carcass Fat	14

How do you know if EPDs are genomic-enhanced?

Ask your breeder, refer to the registration paper, or look for the AGI GE-EPD logo, Angus GS™ powered by partner Neogen GeneSeek or the HD50k by partner Zoetis. These images indicate animals for which low-density or high-density genomic testing has been conducted and incorporated by AGI into GE-EPDs



www.angus.org

Reference
Sire **A**

CAR LEGENDARY 026

19940742

calved - 01/24/20

QUAKER HILL RAMPAGE 0A36#
CONNEALY LEGENDARY 644L#
JAZZED OF CONANGA 4660

MCC DAYBREAK#
QHF BLACKCAP 6E2 OF4V16 4355
MORGANS DIRECTION 111 9901#
JAZE OF CONANGA 234

S A V RESOURCE 1441#
CAR MISS LUCY 717#
CAR MISS LUCY 301

RITO 707 OF IDEAL 3407 7075
S A V BLACKCAP MAY 4136
S A V FINAL ANSWER 0035#
CAR MISS LUCY 720

Birth Wt	65
205 Wt	205
746	
NR	
107	
YR	
117	

CED EPD	BW EPD	WW EPD	Milk EPD	YW EPD	SC EPD		
+10	-1.4	+73	+14	+138	+1.57		
Acc .68	.85	.83	.38	.69	.66		
Marb	RE	Fat	\$M	\$W	\$F	\$G	\$B
+0.65	+1.13	+0.16	+44	+54	+110	+58	+168
Acc .41	.41	.38					



Legendary 026 was our high selling bull of our 2021 production sale to Wheeler Mountain Angus & M R Angus. He is sure shot calving ease bull whose progeny have performed well and are attractive in their makeup with nice quiet dispositions. Outstanding sire group. His first daughters calving are impressive. Semen Available.

Reference
Sire **B**

CAR BISMARCK 8190

19330111

calved - 02/13/18

S A V BISMARCK 5682#
CAR BISMARCK 371
CAR MISS VIKING 9191

G A R GRID MAKER#
S A V ABIGALE 0451
CAR TRACKER 219
CAR MISS VIKING 5145

R B ACTIVE DUTY 010#
CAR MISS MIKAYLA 530#
CAR MISS MIKAYLA 179#

LCC NEW STANDARD#
B A LADY 6807 305
CAR 504 DUKE 898
CAR MISS MIKAYLA 346

Birth Wt	74
205 Wt	205
732	
NR	
113	
YR	
109	

CED EPD	BW EPD	WW EPD	Milk EPD	YW EPD	SC EPD		
+10	-0.7	+57	+26	+93	+2.11		
Acc .39	.69	.63	.32	.53	.62		
Marb	RE	Fat	\$M	\$W	\$F	\$G	\$B
+0.22	+0.40	+0.063	+79	+64	+75	+26	+100
Acc .32	.32	.29					



We retained 8190 out of our 2018 calf crop because of his outstanding dam and his overall completeness as a herd bull. Dam is outstanding 2nd generation pathfinder with 6 @ 111 weaning. Used as cleanup on heifers for 2 years. Excellent feet & disposition on this impressive herd bull. Impressive sire group. First daughters are just calving and are everything we had hoped for.

Reference
Sire **C**

RA JUSTIFIED 124

20054237

calved - 02/23/21

KG JUSTIFIED 3023#
KG JUSTIFIED 8007
KG BEAUTY 6766

CONNEALY JUDGMENT
KG MISS MAGIC 1443
KG SOLUTION 0018#
KG BEAUTY 8409

SITZ ASSET 402C#
RA ERICA LASS 745
RA ERICA LASS C16#

S A V RESOURCE 1441#
SITZ ELLUNAS ELITE 656T
R A IDENTITY 279
RA ERICA LASS A47

CED EPD	BW EPD	WW EPD	Milk EPD	YW EPD	SC EPD		
+8	+1.1	+83	+24	+149	+1.40		
Acc .39	.64	.57	.31	.43	.48		
Marb	RE	Fat	\$M	\$W	\$F	\$G	\$B
+0.29	+0.76	+0.001	+48	+73	+112	+38	+150
Acc .35	.35	.32					



Our pick of the 2022 Regency Acres production sale. His progeny exhibit the length, thickness, performance and correct structure we demand in our cattle. Looking forward to getting daughters in production.

Reference Sire D

S ARMSTRONG

20143639

calved - 03/10/21

SYDGEN BLUEPRINT
S ARCHITECT 9501
S BLOSSOM 7514

KM BROKEN BOW 002#
SITZ FLORABELLE FANNY 4735
S WHITLOCK 179
S BLOSSOM 5525

S FOUNDATION 514#
S QUEEN ESSA 7149#
S QUEEN ESSA 960

VISION UNANIMOUS 1418
S LADY ANN 8384
GDAR GAME DAY 449#
S QUEEN ESSA 208

CED EPD	BW EPD	WW EPD	Milk EPD	YW EPD	SC EPD		
+7	+1.4	+88	+26	+142	+1.80		
Acc .77	.91	.88	.34	.77	.75		
Marb	RE	Fat	\$M	\$W	\$F	\$G	\$B
+72	+0.80	-.029	+116	+88	+118	+61	+179
Acc .44	.45	.39					



A outside A.I. bull that offers a fresh outcross pedigree. We were excited to use this bull after seeing his dam.

Reference Sire E

S & V RAINMAKER 4044-1191

20169074

calved - 04/07/21

BASIN RAINMAKER 2704
BASIN RAINMAKER 4404#
BASIN JOY 1036

BASIN RAINMAKER P175#
BASIN ERICA 7520 BV#
BASIN PAYWEIGHT 107S#
BASIN JOY 566T

VA JUSTICE 0105-3253
VA JUSTICE 6078
VA JUSTICE 3150

CAR JUSTICE 0105
VA PRIDE 9064
CAR JUSTICE 0105
VA PROGRESS 5017

CED EPD	BW EPD	WW EPD	Milk EPD	YW EPD	SC EPD		
+5	+1.8	+80	+25	+135	+0.87		
Acc .37	.70	.63	.33	.46	.37		
Marb	RE	Fat	\$M	\$W	\$F	\$G	\$B
+52	+0.75	+0.036	+50	+69	+106	+46	+152
Acc .33	.32	.30					



Our pick of the S & V program in South Dakota. Tremendous eye appealing sire group with sweet dispositions, excellent structure, good feet and great performance. Replacement females have that look we are striving for.

BASIN RAINMAKER 4404

Sire of S & V Rainmaker 4044-1191

Reference Sire F

CAR CHA CHING 103

20260457

calved - 01/14/21

BARSTOW CASH#
CAR CHA CHING 528
CAR MISS MIKAYLA 510#

SITZ DASH 10277#
BARSTOW QUEEN W16
CAR PRIMETRACKER 308#
CAR MISS MIKAYLA 209

S A V RESOURCE 1441#
CAR MISS LUCY 717#
CAR MISS LUCY 301

RITO 707 OF IDEAL 3407 7075
S A V BLACKCAP MAY 4136
S A V FINAL ANSWER 0035#
CAR MISS LUCY 720

Birth Wt	70
205 Wt	205
	729
	NR
	111
	YR
	114

CED EPD	BW EPD	WW EPD	Milk EPD	YW EPD	SC EPD		
+10	-0.1	+70	+27	+129	+0.30		
Acc .39	.61	.54	.30	.45	.50		
Marb	RE	Fat	\$M	\$W	\$F	\$G	\$B
+49	+0.66	+0.050	+62	+65	+115	+43	+158
Acc .31	.30	.28					



103 was our high selling bull in our 2022 production sale to Mike Applegate. 103 is a maternal brother to herd sire CAR Legendary 026. Progeny are attractive, long smooth made calves that we think highly of. Daughters have that look we are striving for in our cows.

Reference
Sire **G**

CAR YETI 973

19643038

calved - 01/28/19

BASIN PAYWEIGHT 1682#
PAHR YETI B5#
PAHR RITA Q28 OF 0151 9Q20

BASIN PAYWEIGHT 0065#
21AR O LASS 7017
RITO 9Q20 OF RITA 5F56 GHM
P A R LADY COMMITMENT 0151

CAR DURABULL LINE 575
CAR MISS MIKAYLA 760
CAR MISS MIKAYLA 179#

CAR 865 DUKE 3200
CAR MISS MARIE 3184#
CAR 504 DUKE 898
CAR MISS MIKAYLA 346

Birth Wt	70
205 Wt	205
	796
NR	NR
	121
YR	YR
	109

CED EPD	BW EPD	WW EPD	Milk EPD	YW EPD	SC EPD		
+9	+1.3	+68	+20	+108	+0.70		
Acc .41	.69	.62	.34	.46	.52		
Marb	RE	Fat	\$M	\$W	\$F	\$G	\$B
+5.1	+0.48	+0.36	+58	+63	+76	+42	+118
Acc .33	.33	.30					



Used as cleanup bull on heifers for 2 years. Yeti's progeny have that extra punch in weaning & yearling performance. Proven calving ease and maternal ability. Daughters in production are excellent mothers and have flawless udder structure.

Reference
Sire **H**

B BAR HOMESTRETCH 3047

18823242

calved - 02/28/17

CROOK MT REALLY WINDY 141#
B BAR WINDY 79
B BAR LADY JEWEL 116#

A A R REALLY WINDY 1205#
REVOLUTION 155 OF CROOK MT
RA JOE HERO
B BAR LADY JEWEL 884

SITZ RLS ALLIANCE 7164
B BAR QUEEN 304#
B BAR QUEEN 557#

SITZ ALLIANCE 6595#
SITZ RLS EISA EVERGREEN 4451#
S A V BUSHWACKER 3119#
B BAR QUEEN TIME ET 4014

Birth Wt	92
205 Wt	205
	848
NR	NR
	114
YR	YR
	113

CED EPD	BW EPD	WW EPD	Milk EPD	YW EPD	SC EPD		
+6	+0.9	+59	+33	+102	+1.65		
Acc .39	.72	.67	.33	.57	.63		
Marb	RE	Fat	\$M	\$W	\$F	\$G	\$B
+0.01	+0.56	+0.025	+56	+61	+113	+20	+133
Acc .20	.22	.19					



HotLand

B BAR BLACK MASS 3045

Full Brother to B Bar Homestretch 3047

Homestretch was our pick and the high selling bull of the 2018 Lunds B Bar production sale. His dam is an outstanding 2nd generation pathfinder cow in their program. This bull will add length to his progeny. New outcross genetics for our customers. First daughters calved have excellent udder quality and are good mothers. You will also notice we have some progeny from B Bar Black Mass a full brother to Homestretch who was recently leased by Breeder Link.

Reference
Sire **I**

LARSEN PAYWEIGHT 96X

20154621

calved - 03/04/21

BASIN PAYWEIGHT 0065#
BASIN PAYWEIGHT 1682#
21AR O LASS 7017

VERMILION PAYWEIGHT J847#
BASIN LUCY 3829
HARB PENDLETON 765 J H#
21AR O LASS F24A

LARSEN TRAILHEAD 36M
LARSEN BLACKBIRD 221P#
LARSEN BLACKBIRD 74L

S CHISUM 6175#
LRA BARBIE 1H#
SITZ UPWARD 307R#
LRA BLACKBIRD 107F

CED EPD	BW EPD	WW EPD	Milk EPD	YW EPD	SC EPD		
+4	+2.6	+85	+32	+143	+1.57		
Acc .37	.63	.56	.36	.47	.54		
Marb	RE	Fat	\$M	\$W	\$F	\$G	\$B
+5.9	+0.46	+0.064	+54	+80	+128	+44	+172
Acc .38	.38	.36					



Our pick of the 2022 Larsen production sale from a pathfinder dam. 96X progeny are really muscled up and carry those extra pounds at weaning. Looking forward to more progeny in the future on this impressive sire group.

Reference Sire
J

CAR BUTKUS 1156

20260460 calved - 02/10/21

SANDPOINT BUTKUS X797#
GDAR BUTKUS 5217
GDAR PAMELA EVER 2115#

S A V FINAL ANSWER 0035#
G A R GRID MAKER 4603
GDAR GAME DAY 449#
GDAR PAMELA EVER 0263#

R B ACTIVE DUTY 010#
CAR MISS MARIE 5105#
CAR MISS MARIE 319

LCC NEW STANDARD#
B A LADY 6807 305
CAR INCREDIBULL 080
CAR MISS MARIE 7163#

Birth Wt	80
205 Wt	205
	699
	NR
	109
YR	
	113

CED EPD	BW EPD	WW EPD	Milk EPD	YW EPD	SC EPD		
+6	+3.3	+78	+26	+134	+1.52		
Acc .35	.63	.56	.32	.45	.52		
Marb	RE	Fat	\$M	\$W	\$F	\$G	\$B
+0.36	+1.03	-.013	+82	+71	+96	+45	+141
Acc .34	.33	.31					



Dam is impressive 10 year old Pathfinder in our program backed by 3 generations of Pathfinder donor cows tracing directly to 449 cow. Bred in performance and power in this top young herd bull in our program. We are just calving first daughters and they are surpassing our expectations.

Reference Sire
K

CAR JUNIPER 211

20554477 calved - 01/17/22

CAR CEDAR RIDGE 156
CAR HICKORY 547
CAR MISS MARIE 3157

COLE CREEK CEDAR RIDGE 1V#
CAR MISS LUCY 720
CAR CHINNOOK 786#
CAR MISS MARIE 943

CAR MOTIVE 423
CAR MISS JOSEPHINE 626
CAR MISS JOSEPHINE 9134

SOO LINE MOTIVE 9016#
CAR MISS HEATHER 446#
CAR TRAVELER 373
CAR MISS JOSEPHINE 127

Birth Wt	80
205 Wt	205
	709
	NR
	100
YR	
	113

CED EPD	BW EPD	WW EPD	Milk EPD	YW EPD	SC EPD		
+10	+2.0	+65	+21	+113	+1.06		
Acc .33	.58	.51	.29	.40	.45		
Marb	RE	Fat	\$M	\$W	\$F	\$G	\$B
+0.79	+0.33	+0.030	+70	+53	+72	+55	+127
Acc .30	.29	.27					



A bull we retained to carry on the Hickory line of cattle in our program. Dam and full sister to Juniper are exactly what we are striving to produce a whole cow herd of. A strong maternal line with excellent foot structure and good carcass traits.

Reference Sire
L

CAR VERSATILE 255

20557801 calved - 01/24/22

BALDRIDGE FORECASTER B160
BALDRIDGE VERSATILE
BALDRIDGE BLACKBIRD A030

G A R PROPHET#
BALDRIDGE PRATISSA W165
HOOVER DAM#
BALDRIDGE BLACKBIRD X89

LAR WINDY 64 423S#
CAR PRIMROSE LADY 091#
CAR PRIMROSE LADY 691

H A R B WINDY 702 JH#
EILEENMERE DIAMOND 161 L A R
CAR PRIMTRACKER 308#
CAR PRIMROSE LADY 9118

Birth Wt	74
205 Wt	205
	696
	NR
	111
YR	
	109

CED EPD	BW EPD	WW EPD	Milk EPD	YW EPD	SC EPD		
+12	+0.1	+65	+19	+113	+0.66		
Acc .38	.59	.52	.34	.43	.48		
Marb	RE	Fat	\$M	\$W	\$F	\$G	\$B
+1.24	+0.16	+0.050	+53	+58	+60	+73	+133
Acc .34	.33	.30					



Pathfinder dam is 15 and still in production. We retained this Versatile son out of our 2022 calf crop. His progeny exhibit calving ease, extreme body dimension and are moderate statured. We are really impressed with this young herd bull in our program.

Reference Sire **M**

BYERGO COLONEL G14

+19434474

calved - 01/05/19

BALDRIDGE XPAND X743
BALDRIDGE COLONEL C251#
 BALDRIDGE ISABEL Y69

HOOVER DAM#
 BALDRIDGE QUEEN S87
 STYLES UPGRADE J59#
 BALDRIDGE ISABEL T935

LCC NEW STANDARD#
BYERGO CLOVER 850
 BYERGO CLOVER 513

BON VIEW NEW DESIGN 1407#
 LCC SUNSET K3118
 RITO PLUS#
 BYERGO CLOVER 9983

CED EPD	BW EPD	WW EPD	Milk EPD	YW EPD	SC EPD		
+3	+0.2	+61	+29	+119	+0.07		
Acc .43	.70	.64	.39	.49	.55		
Marb	RE	Fat	\$M	\$W	\$F	\$G	\$B
+0.65	+0.57	-.028	+33	+55	+91	+55	+145
Acc .39	.39	.36					



Colonel was our pick and the high selling bull of 2020 Midland Bull Test. He brings in some new bloodlines to our program. He had the best feet we have ever seen on a yearling bull and a super disposition. We are just calving his first daughters and they look quite promising. Semen available.

Reference Sire **N**

WINDY RIDGE SWAGGER 714

18960623

calved - 02/01/17

CONNEALY CONFIDENCE 0100#
MARDA SWAGGER 463
 MF BLACKBIRD 51

CONNEALY TOBIN
 BECKA GALA OF CONANGA 8281
 CONNEALY RIGHT ANSWER 746#
 MF BLACKBIRD 82

WINDY RIDGE DAYLIGHT 104
WINDY RIDGE ROSE 312
 WINDY RIDGE ROSE 117

MCC DAYBREAK#
 WINDY RIDGE BRAZEN LADY 916
 SYDGEN MANDATE 6079#
 WINDY RIDGE EVERELLA 319

CED EPD	BW EPD	WW EPD	Milk EPD	YW EPD	SC EPD		
+10	+0.7	+83	+25	+134	+1.31		
Acc .43	.79	.75	.45	.65	.69		
Marb	RE	Fat	\$M	\$W	\$F	\$G	\$B
+0.49	+0.56	+0.015	+72	+79	+100	+44	+144
Acc .35	.34	.32					

We bought Swagger from Karen Davis in their 2020 sale as a 3 year old. Excellent feet and a super disposition. This bull has done a nice job here. You will like this outcross sire group. Excellent performing sire group. First calf daughters weaned a great set of calves and bred back on time. Semen available.

Reference Sire **P**

BIG DRY RAINFALL H35

19982102

calved - 03/25/20

COLEMAN CHARLO 0256#
S A V RAINFALL 6846
 S A V BLACKCAP MAY 4136

O C C PAXTON 730P#
 BOHI ABIGALE 6014
 S A V 8180 TRAVELER 004#
 S A V MAY 2397#

SITZ ROYAL 9784
BDAR RUBY 747E
 BDAR RUBY 406C

SITZ TOP GAME 561X#
 SITZ BARBARAMERE JET 57
 CONNEALY COOL 39L#
 BDAR RUBY 246Z#

CED EPD	BW EPD	WW EPD	Milk EPD	YW EPD	SC EPD		
+4	+1.8	+65	+33	+126	+2.15		
Acc .40	.67	.60	.37	.50	.57		
Marb	RE	Fat	\$M	\$W	\$F	\$G	\$B
+0.84	+0.70	+0.001	+83	+68	+73	+63	+136
Acc .39	.38	.36					

Our pick of the 2021 Big Dry Angus Sale. As quiet of a disposition you can find. Easy keeping attractive bull we are looking forward to more of his influence in our program.

Reference Sire **O**

JBOD MISSING LINK 935

19628869

calved - 03/12/19

O C C HEADLINER 661H
O C C MISSING LINK 830M#
 O C C DIXIE ERICA 946K

O C C EMBLAZON 854E#
 O C C JUANADA 858F#
 O C C GLORY 950G#
 O C C DIXIE ERICA 816B

CAR CHINNOOK 786#
CAR MISS MARIE 048
 CAR MISS MARIE 7170

A A R REALLY WINDY 1205#
 CAR MISS MARIE 5109
 BOYD NEW DAY 8005#
 C A R MISS MARIE 701

Birth Wt
80
205 Wt
205
685
685
NR
NR
112
112
YR
YR

CED EPD	BW EPD	WW EPD	Milk EPD	YW EPD	SC EPD		
+5	+2.2	+54	+25	+92	+0.96		
Acc .41	.69	.63	.35	.52	.59		
Marb	RE	Fat	\$M	\$W	\$F	\$G	\$B
-.19	+0.88	-.016	+61	+52	+85	+18	+102
Acc .33	.32	.29					

Excellent Missing Link son that is doing a tremendous job for us. Looking forward to getting daughters into production. Should be as range hardy and efficient as there is when you consider the cow family behind them.

Reference Sire **Q**

CAR RARE FIND 0153

19955090

calved - 02/11/20

BASIN PAYWEIGHT 1682#
JACS RARE FIND 6503
 CRAZY K BLACKCAP 4297

BASIN PAYWEIGHT 006S#
 21AR O LASS 7017
 A A R TEN X 7008 S A#
 FOX RUN BLACKCAP 7141

LAR JUNEANU 796Y
CAR MISS VIKING 7130
 CAR MISS VIKING 163#

KOUPAL JUNEANU 797#
 QUEEN ELBA 763U LAR
 CAR CHINNOOK 786#
 CAR MISS VIKING 3119#

Birth Wt
90
205 Wt
205
868
868
NR
NR
124
124
YR
YR
114
114

CED EPD	BW EPD	WW EPD	Milk EPD	YW EPD	SC EPD		
-1	+5.0	+87	+25	+143	+2.10		
Acc .34	.59	.51	.33	.44	.50		
Marb	RE	Fat	\$M	\$W	\$F	\$G	\$B
+0.54	+0.20	+0.045	+56	+68	+102	+40	+142
Acc .33	.32	.30					

Three generations of Pathfinder dams tracing to our foundation 131 Viking cow. Outstanding feet on this docile herdbull that is long, thick, deep made, and carries himself well.

Reference Sire R

CAR MENTOR 0100

19940669

calved - 02/03/20

Birth Wt	74
205 Wt	205
	761
	NR
	110
	YR
	108

G A R RETAIL PRODUCT#
CAR MENTOR 7374#
 EXECUTA OF CONANGA 939#

 CAR BISMARCK 371
CAR MISS MARIE 870
 CAR MISS MARIE 340#

G A R PRECISION 1680#
 G A R EXT 4927
 JAUER 353 TRAVELER 589 27#
 EXEC OF CONANGA 6940#

 S A V BISMARCK 5682#
 CAR MISS VIKING 9191
 CAR CHINNOOK 786#
 CAR MISS MARIE 7183#

CED EPD	BW EPD	WW EPD	Milk EPD	YW EPD	SC EPD		
+11	+1.1	+57	+21	+109	+1.18		
Acc .39	.60	.53	.33	.45	.51		
Marb	RE	Fat	\$M	\$W	\$F	\$G	\$B
+0.79	+0.47	+0.26	+61	+49	+77	+56	+133
Acc .36	.35	.33					

Four generations of Pathfinder dams behind this bull with excellent feet we retained. Impressive numbers, carcass values, and maternal strength behind this bull.

Reference Sire U

CAR CHINOOK 998

19645460

calved - 01/31/19

Birth Wt	84
205 Wt	205
	676
	NR
	100
	YR
	100

A A R REALLY WINDY 1205#
CAR CHINNOOK 786#
 CAR MISS MARIE 5109

 CAR CEDAR RIDGE 156
CAR MISS MIKAYLA 5207
 CAR MISS MIKAYLA 294

A A R WINDY RIDGE 362
 A A R LADY KELTON 2170
 CAR TRACKER 904#
 CAR MARIE 0108

 COLE CREEK CEDAR RIDGE 1V#
 CAR MISS LUCY 720
 HBR ENCORE 0544
 CAR MISS MIKAYLA 510#

CED EPD	BW EPD	WW EPD	Milk EPD	YW EPD	SC EPD		
+13	+0.7	+44	+24	+71	+1.36		
Acc .35	.60	.53	.32	.40	.44		
Marb	RE	Fat	\$M	\$W	\$F	\$G	\$B
+0.78	+0.26	+0.27	+71	+48	+63	+53	+117
Acc .30	.29	.27					

Pathfinder great grand dam produced last calf at 17. Lots of maternal and longevity in this top Chinook son we kept to use.

Reference Sire S

CAR BISMARCK 0184

19951903

calved - 02/20/20

Birth Wt	70
205 Wt	205
	685
	NR
	108
	YR
	102

CAR BISMARCK 371
CAR BISMARCK 8190
 CAR MISS MIKAYLA 530#

 HARRISON TRUE GRIT 4253
CAR MISS VIKING 8148
 CAR MISS VIKING 752

S A V BISMARCK 5682#
 CAR MISS VIKING 9191
 R B ACTIVE DUTY 010#
 CAR MISS MIKAYLA 179#

 HILLTOP TRUE GRIT 9202#
 HARRISON MISS HILDA 9097
 CAR DUKE 504
 CAR MISS VIKING 5145

CED EPD	BW EPD	WW EPD	Milk EPD	YW EPD	SC EPD		
+5	+2.1	+62	+19	+103	+1.42		
Acc .33	.52	.45	.24	.38	.46		
Marb	RE	Fat	\$M	\$W	\$F	\$G	\$B
+0.35	+0.18	+0.36	+65	+55	+84	+31	+115
Acc .26	.25	.23					

A young bull from a top producing cow family we used as a cleanup bull on our heifers.



Reference Sire T

CAR BRAVO 151

20134977

calved - 01/24/21

Birth Wt	85
205 Wt	205
	693
	NR
	106
	YR
	111

COLEMAN CHARLO 0256#
COLEMAN BRAVO 6313#
 COLEMAN DONNA 714

 CAR EFFICIENT 534#
CAR MISS DIANA 598#
 CAR MISS DIANA 3111

O C C PAXTON 730P#
 BOHI ABIGALE 6014
 CONNEALY ONWARD#
 COLEMAN DONNA 386

 K C F BENNETT EFFICIENT
 CAR MISS SUSIE 308#
 S A V BISMARCK 5682#
 CAR MISS DIANA 0105

CED EPD	BW EPD	WW EPD	Milk EPD	YW EPD	SC EPD		
+6	+1.1	+58	+29	+106	+1.73		
Acc .44	.61	.54	.34	.44	.49		
Marb	RE	Fat	\$M	\$W	\$F	\$G	\$B
+0.41	+0.75	+0.17	+104	+66	+88	+42	+131
Acc .34	.33	.30					

Dam is a top producing Pathfinder daughter of Efficient. We used this top Bravo son as a clean up bull on our heifers.





Reference
Sire **V**

CAR PACIFIC 258

20561134

calved - 01/24/22

HOOVER NO DOUBT
STERLING PACIFIC 904
BALDRIDGE ISABEL B082

MOGCK BULLSEYE#
MISS BLACKCAP ELLSTON J2
G A R PROPHET#
BALDRIDGE ISABEL Y69
JENNAWAY GAME DAY 024
CAR MISS MARIE 8212#
CAR MEDICINE MAN 640
CAR MISS AMY 600

Birth Wt	75
205 Wt	725
NR	NR
115	115
YR	YR
120	120

CAR GAME DAY 406
CAR MISS AMY 686
CAR MISS AMY 8113

CED EPD	BW EPD	WW EPD	Milk EPD	YW EPD	SC EPD		
+2	+2.5	+65	+13	+117	+0.57		
Acc .38	.59	.52	.34	.44	.48		
Marb	RE	Fat	\$M	\$W	\$F	\$G	\$B
+0.73	+0.58	+0.00	+30	+40	+88	+57	+144
Acc .35	.34	.32					

Excellent cow family behind this Pacific son we retained as a cleanup bull for heifers. This cow family produced CAR Duke 104. We are looking forward to more progeny from this young herd bull that we think highly of.

Reference
Sire **W**

CAR MISSING LINK 1256

20568667

calved - 02/20/21

O C C MISSING LINK 830M#
JBOB MISSING LINK 935
CAR MISS MARIE 048

O C C HEADLINER 661H
O C C DIXIE ERICA 946K
CAR CHINNOOK 786#
CAR MISS MARIE 7170

Birth Wt	68
205 Wt	671
NR	NR
105	105
YR	YR
100	100

CAR HICKORY 547
CAR MISS HEATHER 907
CAR MISS HEATHER 2169

CAR CEDAR RIDGE 156
CAR MISS MARIE 3157
CAR INCREDIBULL 080
CAR MISS HEATHER 446#

CED EPD	BW EPD	WW EPD	Milk EPD	YW EPD	SC EPD		
+4	+3.6	+72	+34	+115	+2.28		
Acc .28	.49	.45	.26	.36	.35		
Marb	RE	Fat	\$M	\$W	\$F	\$G	\$B
+0.11	+0.56	-.011	+60	+73	+72	+28	+100
Acc .28	.27	.25					

Missing Link son we retained and used on heifers for clean up with no problems. This bulls progeny have a lot of performance and long term bred in longevity in them.



Add A Tag That Adds Value.

The American Angus Association's comprehensive AngusSource® Process Verified Program and services are aimed at improving profitability in the commercial sector of the cattle industry. The AngusSource portfolio of five value-added programs is your source to stay competitive in the marketplace.

Visit AngusSource.com or call 816.383.5100 to get the value you deserve.

ANGUS SOURCE®

VALUE ADDED PROGRAMS



Age and Source • Non-Hormone Treated Cattle • AS NeverEver3
• AS Cattle Care & Handling • AS Calf Management



Lot Information Explanation

BW - Actual Birthweight

WW - Actual Weight on day weaned (10/8/24)

205 wt - Weaning weight adjusted to 205 day weight to allow comparison among individuals

NR - Nursing Ratio used for within herd comparisons



CAR ARMSTRONG 4102

21167516

calved - 02/01/24

Bull
S ARCHITECT 9501
S ARMSTRONG
S QUEEN ESSA 7149#

SYDGEN BLUEPRINT
S BLOSSOM 7514
S FOUNDATION 514#
S QUEEN ESSA 960
COLE CREEK CEDAR RIDGE 1V#
CAR MISS LUCY 720
CAR CHINNOOK 786#
CAR MISS CAROLINE 436

CAR CEDAR RIDGE 156
CAR MISS CAROLINE 612
CAR MISS CAROLINE 036



BW	WW 10/8	205 wt	NR	365 wt	YR	ADG	Scrotal
75	826	729	105	1310	116	3.63	36.9
CED	BW	WW	Milk	YW	SC		
+2	+3.1	+80	+26	+132	+1.71		
Marb	RE	Fat	\$M	\$W	\$F	\$G	\$B
+0.55	+0.79	-0.049	+81	+76	+90	+54	+144

365 wt - Weaning weight adjusted to 365 day weight to allow comparison among individuals

ADG - Average Daily Gain

YR - Yearling Ratio used for within herd comparison

Scrotal - Adjusted scrotal measurement

Calving Ease Direct EPD (CED) - Expressed as a difference on percentage of unassisted births, with a higher value indicating greater calving ease in first-calf heifers. Predicts the average difference in ease with which a sire's calves will be born when he is bred to first-calf heifers.

Birth Weight EPD (BW) - Expressed in pounds, is a predictor of an individual's ability to transmit birth weight to his progeny compared to that of other individuals.

Weaning Weight EPD (WW) - Expressed in pounds, is a predictor of an individual's ability to transmit weaning growth to his progeny compared to that of other individuals.

Maternal Milk EPD (Milk) - A predictor of individual's genetic merit for milk and mothering ability compared to other individuals. It is that part of a calf's weaning weight attributed to milk and mothering ability.

Yearling Weight EPD (YW) - Expressed in pounds, is a predictor of an individual's ability to transmit yearling growth to his progeny compared to that of other individuals.

Scrotal Circumference (SC) - expressed in centimeters, is a predictor of the difference in transmitting ability for scrotal size compared to that of other sires.

Marbling EPD (Marb) - Expressed as a fraction of the difference in USDA marbling score of a sire's progeny compared to progeny of other sires.

Ribeye Area EPD (RE) - Expressed in square inches, is a predictor of the difference in ribeye area of a sire's progeny compared to progeny of other sires.

Fat Thickness EPD (Fat) - Expressed in inches, is a predictor of the differences in external fat thickness at the 12th rib (as measured between the 12th and 13th ribs) of a sire's progeny compared to progeny of other sires.

Maternal Weaned Calf Value (\$M) - An index expressed in dollars per head, predicts profitability differences in progeny due to genetics from conception to weaning. \$M is built off of a self-replacing herd model where commercial cattlemen replace 25% of their breeding females in the first generation and 20% in subsequent generations. Remaining cull females and all male progeny are sold as feeder calves. Increased selection pressure on \$M aims to decrease overall mature cow size and improve foot structure and fertility while maintaining weaning weights consistent with today's production.

Weaned Calf Value (\$W) - An index value expressed in dollars per head, is the expected average difference in future progeny performance for preweaning merit. \$W includes both revenue and cost adjustments associated with differences in birth weight, weaning direct growth, maternal milk, and mature cow size.

Feedlot Value (\$F) - An index value expressed in dollars per head, is the expected average difference in future progeny performance for postweaning merit compared to progeny of other sires.

Grid Value (\$G) - an index value expressed in dollars per head, is the expected average difference in future progeny performance for carcass grid merit compared to progeny of other sires.

Beef Value (\$B) - an index value expressed in dollars per head, is the expected average difference in future progeny performance for postweaning and carcass value compared to progeny of other sires.

Key to performance information used in this catalog

- Pathfinder

BW - Actual Birth Weight

WW - Actual Weaning Weight

Weaning Date - 10/8/24

205 wt - 205 Day Adjusted Weight

NR - Nursing Ratio

365 wt - 365 Day Adjusted Weight

YR - Yearling Ratio

ADG - Average Daily Gain

Scrotal - Adjusted Scrotal Measurement

ET - Embryo Transplant

Marb EPD - Marbling Carcass EPD

RE EPD - Ribeye Carcass EPD

FAT EPD - Fat Carcass EPD





YEARLING BULLS



1

Bull

CAR ARMSTRONG 4102

21167516

calved - 02/01/24

S ARCHITECT 9501
S ARMSTRONG
S QUEEN ESSA 7149#

SYDGEN BLUEPRINT
S BLOSSOM 7514
S FOUNDATION 514#
S QUEEN ESSA 960
COLE CREEK CEDAR RIDGE 1V#
CAR MISS LUCY 720
CAR CHINNOOK 786#
CAR MISS CAROLINE 436



CAR CEDAR RIDGE 156
CAR MISS CAROLINE 612
CAR MISS CAROLINE 036

BW	WW 10/8	205 wt	NR	365 wt	YR	ADG	Scrotal
75	826	729	105	1310	116	3.63	36.9
CED	BW	WW	Milk	YW	SC		
+2	+3.1	+80	+26	+132	+1.71		
Marb	RE	Fat	\$M	\$W	\$F	\$G	\$B
+0.55	+0.79	-0.049	+81	+76	+90	+54	+144

Excellent udder quality, phenotype and fleshing ability for generations in this cow family. Both dam & grand dam have average birth ratios of 95 on their progeny. Very complete individual. Always an eye catcher when you go through the pen. Big, stout outcross herdbull prospect.



2

Bull

CAR CHA CHING 459

21160523

calved - 01/25/24

CAR CHA CHING 528
CAR CHA CHING 103
CAR MISS LUCY 717#

BARSTOW CASH#
CAR MISS MIKAYLA 510#
S A V RESOURCE 1441#
CAR MISS LUCY 301
MARDA SWAGGER 463
WINDY RIDGE ROSE 312
CAR GAME DAY 406
CAR MISS MARIE 576



WINDY RIDGE SWAGGER 714
CAR MISS MARIE 211
CAR MISS MARIE 7183

BW	WW 10/8	205 wt	NR	365 wt	YR	ADG	Scrotal
70	792	757	110	1269	113	3.20	38.2
CED	BW	WW	Milk	YW	SC		
+13	-1.3	+71	+32	+136	+1.17		
Marb	RE	Fat	\$M	\$W	\$F	\$G	\$B
+0.26	+0.78	+0.026	+59	+74	+105	+35	+139

Out of a 1st calf heifer. Dam is a beautiful young cow that was one of the first to calve this year. When you look at the indexes, the numbers and evaluate this rascal in person, he is the complete package. Top outcross calving ease herdbull prospect.



3

Bull

CAR LEGENDARY 427

21160574

calved - 01/22/24

CONNEALY LEGENDARY 644L#
CAR LEGENDARY 026
CAR MISS LUCY 717#

QUAKER HILL RAMPAGE 0A36#
JAZZED OF CONANGA 4660
S A V RESOURCE 1441#
CAR MISS LUCY 301
SOO LINE MOTIVE 9016#
CAR MISS HEATHER 446#
CAR TRACKER 904#
CAR MISS DIANA 157



CAR MOTIVE 423
CAR MISS DIANA 8103
CAR MISS DIANA 6110

BW	WW 10/8	205 wt	NR	365 wt	YR	ADG	Scrotal
76	902	779	113	1277	113	3.11	39.1
CED	BW	WW	Milk	YW	SC		
+9	-0.1	+67	+20	+113	+0.54		
Marb	RE	Fat	\$M	\$W	\$F	\$G	\$B
+0.80	+0.72	+0.051	+71	+63	+92	+58	+150

Dam comes from a very strong maternal line of cows with previous 5 generations averaging 12 calves. Excellent fertility and longevity. Ultra complete calving ease herdbull prospect that is free moving. We think very highly of this hard to fault calf with the heaviest weaning weight.





YEARLING BULLS



4 Bull

CAR HOMESTRETCH 441

21160549

calved - 01/24/24

B BAR WINDY 79
B BAR HOMESTRETCH 3047
B BAR QUEEN 304#

CROOK MT REALLY WINDY 141#
B BAR LADY JEWEL 116#
SITZ RLS ALLIANCE 7164
B BAR QUEEN 557#

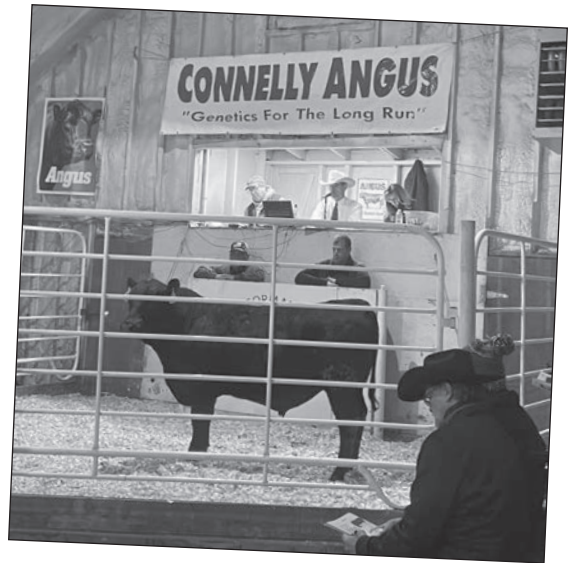
CAR JUNEANU 3236
CAR MISS WENDY 7114#
CAR MISS WENDY 4121

LAR JUNEANU 796Y
CAR MISS DIANA 0101#
E 7 GURU 1375
CAR MISS WENDY 1110#



BW	WW 10/8	205 wt	NR	365 wt	YR	ADG	Scrotal
83	866	753	109	1235	109	3.01	38.1
CED	BW	WW	Milk	YW	SC		
-3	+3.1	+64	+35	+115	+1.01		
Marb	RE	Fat	\$M	\$W	\$F	\$G	\$B
+0.44	+53	+0.18	+56	+61	+86	+41	+127

Dam is an 8yr old pathfinder cow with 6@ 107 weaning. Lots of performance and maternal power in this big, stout herdbull prospect by Homestretch.



5 Bull

CAR JUSTIFIED 4150

21160566

calved - 02/08/24

KG JUSTIFIED 8007
RA JUSTIFIED 124
RA ERICA LASS 745

KG JUSTIFIED 3023#
KG BEAUTY 6766
SITZ ASSET 402C#
RA ERICA LASS C16#

CAR CHINNOOK 786#
CAR MISS JULIE 849
CAR MISS JULIE 664

A A R REALLY WINDY 1205#
CAR MISS MARIE 5109
PRAIRIE PRIDE NEXT STEP 2036#
CAR MISS JULIE 4130



BW	WW 10/8	205 wt	NR	365 wt	YR	ADG	Scrotal
72	834	747	108	1251	111	3.15	41.6
CED	BW	WW	Milk	YW	SC		
+8	+0.9	+74	+23	+130	+2.38		
Marb	RE	Fat	\$M	\$W	\$F	\$G	\$B
+0.34	+1.01	-0.060	+50	+66	+81	+48	+129

Dam is an outstanding 7yr old Chinook daughter that always brings in a good calf. This top end Justified calving ease herdbull prospect is a big, thick, stout individual with a big scrotal.



6 Bull

CAR PAYWEIGHT 495

21160579

calved - 01/31/24

BASIN PAYWEIGHT 1682#
LARSEN PAYWEIGHT 96X
LARSEN BLACKBIRD 221P#

BASIN PAYWEIGHT 006S#
21AR O LASS 7017
LARSEN TRAILHEAD 36M
LARSEN BLACKBIRD 74L

JBOB MISSING LINK 905
CAR MISS JOSEPHINE 197
CAR MISS JOSEPHINE 9146

O C C MISSING LINK 830M#
CAR MISS MARIE 079
BARTELS CONSENSUS 3809 649
CAR MISS JOSEPHINE 7133



BW	WW 10/8	205 wt	NR	365 wt	YR	ADG	Scrotal
81	844	781	113	1232	109	2.82	40.4
CED	BW	WW	Milk	YW	SC		
+4	+2.1	+64	+35	+102	+1.38		
Marb	RE	Fat	\$M	\$W	\$F	\$G	\$B
+0.36	+24	+0.072	+53	+75	+87	+30	+117

Excellent performing big stout 96X son from a top young producing Missing Link daughter.





YEARLING BULLS



7 Bull

CAR SWAGGER 403

21160513

calved - 01/17/24

MARDA SWAGGER 463
WINDY RIDGE SWAGGER 714
WINDY RIDGE ROSE 312

CONNELLY CONFIDENCE 0100#
MF BLACKBIRD 51
WINDY RIDGE DAYLIGHT 104
WINDY RIDGE ROSE 117

CAR CEDAR RIDGE 156
CAR MISS HEATHER 634#
CAR MISS HEATHER 3116

COLE CREEK CEDAR RIDGE 1V#
CAR MISS LUCY 720
CAR TIMELINE 072
CAR MISS HEATHER 1113#



BW	WW 10/8	205 wt	NR	365 wt	YR	ADG	Scrotal
85	888	762	110	1122	99	2.25	39.9
CED	BW	WW	Milk	YW	SC		
+2	+3.0	+83	+26	+134	+1.01		
Marb	RE	Fat	\$M	\$W	\$F	\$G	\$B
+0.29	+0.61	+0.003	+69	+77	+112	+36	+148

Dam is a 9yr old pathfinder cow with ratios of 99BW, 108WR & 108YR on her calves. Big, stout herdbull prospect by Swagger from a top producing cow family. Has a tick of white on his sheath.



8 Bull

CAR JUSTIFIED 472

21160545

calved - 01/27/24

KG JUSTIFIED 8007
RA JUSTIFIED 124
RA ERICA LASS 745

KG JUSTIFIED 3023#
KG BEAUTY 6766
SITZ ASSET 402C#
RA ERICA LASS C16#

CAR REMARKABLE 821
CAR MISS MARIE 024
CAR MISS MARIE 528

CAR REMARKABLE 640
CAR MISS HEATHER 5167#
CAR INCREDIBULL 080
CAR MISS MARIE 1140#



BW	WW 10/8	205 wt	NR	365 wt	YR	ADG	Scrotal
66	812	723	105	1261	112	3.36	39.4
CED	BW	WW	Milk	YW	SC		
+14	+0.0	+68	+23	+123	+1.72		
Marb	RE	Fat	\$M	\$W	\$F	\$G	\$B
+0.19	+0.49	+0.054	+44	+62	+82	+26	+108

He's a long, deep, thick, soggy calving ease herdbull prospect by Justified. From a top proven cow family in our program.



9 Bull

CAR RAINMAKER 413

21160504

calved - 01/20/24

BASIN RAINMAKER 4404#
S & V RAINMAKER 4044-1191
VA JUSTICE 6078

BASIN RAINMAKER 2704
BASIN JOY 1036
VA JUSTICE 0105-3253
VA JUSTICE 3150

CAR GAME DAY 406
CAR MISS JULIE 8192
CAR MISS JULIE 3214

JENNAWAY GAME DAY 024
CAR MISS MARIE 8212#
CAR STEWARD 076
CAR MISS JULIE 2100



BW	WW 10/8	205 wt	NR	365 wt	YR	ADG	Scrotal
76	852	734	106	1190	105	2.85	37.0
CED	BW	WW	Milk	YW	SC		
+8	+0.9	+59	+27	+98	+0.12		
Marb	RE	Fat	\$M	\$W	\$F	\$G	\$B
+0.45	+0.65	+0.030	+63	+61	+82	+42	+124

A calving ease prospect with a heavy weaning weight by Rainmaker. He has tremendous performance and great maternal values.





YEARLING BULLS



10

Bull

CAR LEGENDARY 422

21160584 calved - 01/21/24

CONNEALY LEGENDARY 644L#
CAR LEGENDARY 026
 CAR MISS LUCY 717#

QUAKER HILL RAMPAGE 0A36#
 JAZZED OF CONANGA 4660
 S A V RESOURCE 1441#
 CAR MISS LUCY 301

HARRISON TRUE GRIT 4253
CAR MISS BRENDA 8180
 CAR MISS BRENDA 585#

HILLTOP TRUE GRIT 9202#
 HARRISON MISS HILDA 9097
 BARSTOW CASH#
 CAR MISS BRENDA 3132



BW	WW 10/8	205 wt	NR	365 wt	YR	ADG	Scrotal
77	850	734	106	1182	105	2.80	39.5
CED	BW	WW	Milk	YW	SC		
+13	-0.4	+72	+19	+127	+1.62		
Marb	RE	Fat	\$M	\$W	\$F	\$G	\$B
+0.55	+0.69	+0.049	+60	+63	+79	+46	+125

Dam has an average of 101BR, 108WR and 110YR on the progeny. Very complete calving ease herdbull prospect that has always been an eye catcher. He will have a lot of admirers on sale day.



11

Bull

CAR RAINMAKER 401

21160498 calved - 01/15/24

BASIN RAINMAKER 4404#
S & V RAINMAKER 4044-1191
 VA JUSTICE 6078

BASIN RAINMAKER 2704
 BASIN JOY 1036
 VA JUSTICE 0105-3253
 VA JUSTICE 3150

CAR EFFICIENT 904
CAR MISS JULIE 910
 CAR MISS JULIE 0125#

CAR EFFICIENT 7132
 CAR MISS JODY 119
 CAR INCREDIBULL 8136
 CAR MISS JULIE 8108



BW	WW 10/8	205 wt	NR	365 wt	YR	ADG	Scrotal
76	842	720	104	1218	108	3.11	37.9
CED	BW	WW	Milk	YW	SC		
+7	+0.6	+59	+28	+104	+0.97		
Marb	RE	Fat	\$M	\$W	\$F	\$G	\$B
+0.40	+0.43	+0.067	+41	+57	+99	+34	+133

Granddam is a pathfinder. Both granddam and great granddam have produced 11 calves each. Massive calving ease herdbull prospect from front end producing cow family.



12

Bull

CAR RAINMAKER 479

21160489 calved - 01/29/24

BASIN RAINMAKER 4404#
S & V RAINMAKER 4044-1191
 VA JUSTICE 6078

BASIN RAINMAKER 2704
 BASIN JOY 1036
 VA JUSTICE 0105-3253
 VA JUSTICE 3150

CAR CHA CHING 528
CAR MISS MARIE 8199
 CAR MISS MARIE 6133

BARSTOW CASH#
 CAR MISS MIKAYLA 510#
 CAR GRANITE 4133
 CAR MISS MARIE 4156



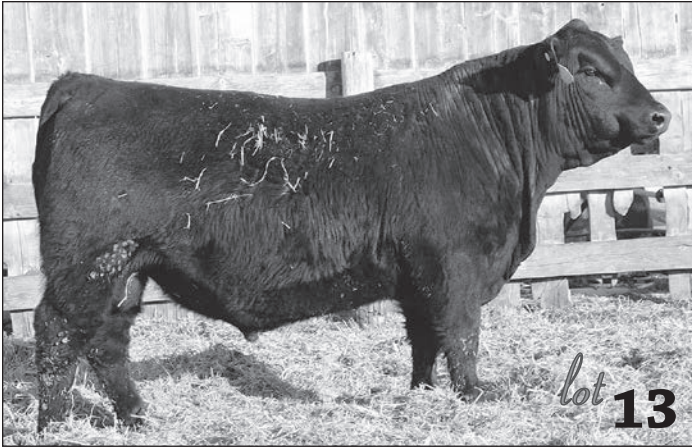
BW	WW 10/8	205 wt	NR	365 wt	YR	ADG	Scrotal
82	842	739	107	1137	101	2.49	37.8
CED	BW	WW	Milk	YW	SC		
+7	+1.4	+74	+22	+120	+1.08		
Marb	RE	Fat	\$M	\$W	\$F	\$G	\$B
+0.25	+0.68	+0.020	+56	+67	+86	+34	+120

This long, smooth made Rainmaker son has a great set of numbers and a heavy weaning weight.





YEARLING BULLS



13

Bull

CAR RAINMAKER 402

21160511 calved - 01/15/24

BASIN RAINMAKER 4404#
S & V RAINMAKER 4044-1191
VA JUSTICE 6078

BASIN RAINMAKER 2704
BASIN JOY 1036
VA JUSTICE 0105-3253
VA JUSTICE 3150

CAR RESOURCE 610
CAR MISS MARIE 812#
CAR MISS MARIE 951#

S A V RESOURCE 1441#
CAR MISS ROBERTA 7117
B BAR BUSHWACKER 204
CAR MISS MARIE 509



BW	WW 10/8	205 wt	NR	365 wt	YR	ADG	Scrotal
82	858	734	106	1232	109	3.11	37.8
CED	BW	WW	Milk	YW	SC		
-2	+3.3	+72	+16	+117	+0.29		
Marb	RE	Fat	\$M	\$W	\$F	\$G	\$B
+0.21	+0.64	+0.002	+47	+51	+85	+32	+118

Dam is a 2nd generation pathfinder cow that always weans off one of our best calves. Very complete herdbull prospect by Rainmaker.

14

Bull

CAR RAINMAKER 497

21160565 calved - 02/01/24

BASIN RAINMAKER 4404#
S & V RAINMAKER 4044-1191
VA JUSTICE 6078

BASIN RAINMAKER 2704
BASIN JOY 1036
VA JUSTICE 0105-3253
VA JUSTICE 3150

BARSTOW CASH#
CAR MISS BRENDA 585#
CAR MISS BRENDA 3132

SITZ DASH 10277#
BARSTOW QUEEN W16
S A V BISMARCK 5682#
CAR MISS BRENDA 826



BW	WW 10/8	205 wt	NR	365 wt	YR	ADG	Scrotal
76	814	718	104	1216	108	3.11	37.4
CED	BW	WW	Milk	YW	SC		
+5	+3.0	+78	+26	+134	+1.68		
Marb	RE	Fat	\$M	\$W	\$F	\$G	\$B
+0.51	+1.29	-.043	+55	+66	+106	+58	+164

Dam is a 10yr old pathfinder cow. Look at the impressive performance numbers and carcass values on this big stout herdbull prospect by Rainmaker.

15

Bull

CAR HOMESTRETCH 421

21160552 calved - 01/21/24

B BAR WINDY 79
B BAR HOMESTRETCH 3047
B BAR QUEEN 304#

CROOK MT REALLY WINDY 141#
B BAR LADY JEWEL 116#
SITZ RLS ALLIANCE 7164
B BAR QUEEN 557#

BARTELS IMPRESSION C116
CAR MISS DIANA 929
CAR MISS DIANA 4185

CONNEALY IMPRESSION#
K C F MISS CONSENSUS Y300
CAR 653 TRACKER 060
CAR MISS DIANA 7144#



BW	WW 10/8	205 wt	NR	365 wt	YR	ADG	Scrotal
77	818	707	102	1182	104	2.97	36.1
CED	BW	WW	Milk	YW	SC		
+4	+1.7	+62	+29	+104	+0.81		
Marb	RE	Fat	\$M	\$W	\$F	\$G	\$B
-0.13	+0.61	+0.023	+63	+62	+102	+14	+116

Top performance figures on this long spined, attractive made Homestretch son with a powerful cow family backing him.



16

Bull

CAR JUSTIFIED 425

21160493 calved - 01/22/24

KG JUSTIFIED 8007
RA JUSTIFIED 124
RA ERICA LASS 745

KG JUSTIFIED 3023#
KG BEAUTY 6766
SITZ ASSET 402C#
RA ERICA LASS C16#

SYDGEN FATE 2800#
CAR MISS SUSIE 659
CAR MISS SUSIE 441

SYDGEN TRUST 6228#
SYDGEN HEROINE 9808
CONNEALY BLACK GRANITE#
CAR MISS SUSIE 973



BW	WW 10/8	205 wt	NR	365 wt	YR	ADG	Scrotal
68	830	717	104	1221	108	3.15	37.1
CED	BW	WW	Milk	YW	SC		
+17	-2.0	+68	+31	+122	+1.02		
Marb	RE	Fat	\$M	\$W	\$F	\$G	\$B
+0.45	+0.57	+0.052	+58	+74	+88	+40	+127

Top, sleep all night calving ease herdbull prospect that weaned heavy and performed well on test. Herdbull producing cow family with strong maternal values.



YEARLING BULLS



19 Bull

CAR RAINMAKER 407

21160505

calved - 01/19/24

BASIN RAINMAKER 4404#
S & V RAINMAKER 4044-1191
VA JUSTICE 6078

BASIN RAINMAKER 2704
BASIN JOY 1036
VA JUSTICE 0105-3253
VA JUSTICE 3150

CAR REMARKABLE 640
CAR MISS HILDA 964
CAR MISS HILDA 4216

S A V RESOURCE 1441#
CAR MISS MARIE 769#
NA PIONEER 0180
CAR MISS HILDA 649



BW	WW 10/8	205 wt	NR	365 wt	YR	ADG	Scrotal
77	848	730	106	1149	102	2.62	40.0
CED	BW	WW	Milk	YW	SC		
+5	+1.8	+67	+31	+112	+1.57		
Marb	RE	Fat	\$M	\$W	\$F	\$G	\$B
+0.42	+0.26	+0.52	+44	+64	+83	+34	+118

Excellent uddered dam always brings in a heavy calf. Excellent maternal and performance data on this calving ease prospect by Rainmaker.

17 Bull

CAR BLACK MASS 443

21160558

calved - 01/24/24

B BAR WINDY 79
B BAR BLACK MASS 3045#
B BAR QUEEN 304#

CROOK MT REALLY WINDY 141#
B BAR LADY JEWEL 116#
SITZ RLS ALLIANCE 7164
B BAR QUEEN 557#

CAR CHA CHING 528
CAR MISS DIANA 7120
CAR MISS DIANA 2120#

BARSTOW CASH#
CAR MISS MIKAYLA 510#
CAR RIDGERUNNER 867
CAR MISS DIANA 0101#



BW	WW 10/8	205 wt	NR	365 wt	YR	ADG	Scrotal
80	804	699	109	1187	112	3.05	41.1
CED	BW	WW	Milk	YW	SC		
+1	+3.0	+70	+17	+126	+2.17		
Marb	RE	Fat	\$M	\$W	\$F	\$G	\$B
-0.14	+0.64	-0.13	+79	+53	+100	+17	+117

Five generations of pathfinder dams behind this top herdbull prospect by Black Mass, tracing directly to our foundation 937 cow.

20 Bull

CAR JUSTIFIED 468

21160543

calved - 01/27/24

KG JUSTIFIED 8007
RA JUSTIFIED 124
RA ERICA LASS 745

KG JUSTIFIED 3023#
KG BEAUTY 6766
SITZ ASSET 402C#
RA ERICA LASS C16#

CAR HERO 631
CAR MISS VIKING 1132
CAR MISS VIKING 7124

CAR HERO 300
CAR MISS ROBERTA 403
CAR PRIMETRACKER 308#
CAR MISS VIKING 3119#



BW	WW 10/8	205 wt	NR	365 wt	YR	ADG	Scrotal
72	796	717	104	1211	107	3.09	36.6
CED	BW	WW	Milk	YW	SC		
+7	+0.6	+53	+29	+97	+0.28		
Marb	RE	Fat	\$M	\$W	\$F	\$G	\$B
+0.03	+0.44	+0.38	+50	+52	+81	+19	+100

Dam is a 14yr old cow that is still producing. Tremendous calving ease prospect by Justified with an impressive set of figures.

18 Bull

CAR MISSING LINK 4142

21160569

calved - 02/06/24

JBOB MISSING LINK 935
CAR MISSING LINK 1256
CAR MISS HEATHER 907

O C C MISSING LINK 830M#
CAR MISS MARIE 048
CAR HICKORY 547
CAR MISS HEATHER 2169

CAR JUNEAU 3236
CAR MISS SUSIE 737
CAR MISS SUSIE 618

LAR JUNEANU 796Y
CAR MISS DIANA 0101#
CAR DUKE 104#
CAR SUSIE 101



BW	WW 10/8	205 wt	NR	365 wt	YR	ADG	Scrotal
81	804	718	104	1249	111	3.32	39.0
CED	BW	WW	Milk	YW	SC		
-1	+3.3	+71	+27	+117	+2.11		
Marb	RE	Fat	\$M	\$W	\$F	\$G	\$B
+0.30	+0.05	-0.15	+52	+65	+76	+31	+107

Very fertile cow family with lots of proven long term longevity behind this big stout herdbull prospect by Missing Link 1256. Dam always weans one of our best calves.

21 Bull

CAR CHINOOK 4111

21160500

calved - 02/02/24

CAR CHINOOK 786#
CAR CHINOOK 998
CAR MISS MIKAYLA 5207

A A R REALLY WINDY 1205#
CAR MISS MARIE 5109
CAR CEDAR RIDGE 156
CAR MISS MIKAYLA 294

CAR GAME DAY 406
CAR MISS SUSIE 6207
CAR MISS SUSIE 060#

JENNAWAY GAME DAY 024
CAR MISS MARIE 8212#
LAR WINDY 64 4235#
CAR SUSIE 101



BW	WW 10/8	205 wt	NR	365 wt	YR	ADG	Scrotal
82	780	691	100	1225	108	3.34	38.9
CED	BW	WW	Milk	YW	SC		
+3	+3.6	+60	+17	+98	+1.54		
Marb	RE	Fat	\$M	\$W	\$F	\$G	\$B
+0.38	+0.31	+0.12	+56	+43	+61	+36	+97

Powerful cow family with dam average on progeny of 106BW, 110WR and 112YR. Use this top Chinook son to get a rippin good set of replacement heifers.



YEARLING BULLS



22

Bull

CAR JUNIPER 412

21163220

calved - 01/20/24

CONNEALY LEGENDARY 644L#
CAR LEGENDARY 026
CAR MISS LUCY 717#

QUAKER HILL RAMPAGE 0A36#
JAZZED OF CONANGA 4660
S A V RESOURCE 1441#
CAR MISS LUCY 301

CAR JUNEANU 7179
CAR MISS MARIE 1149
CAR MISS MARIE 643

LAR JUNEANU 796Y
CAR MISS MARIE 340#
CAR MOTIVE 423
CAR MISS MARIE 0207



BW	WW 10/8	205 wt	NR	365 wt	YR	ADG	Scrotal
64	772	702	109	1200	113	3.11	38.7
CED	BW	WW	Milk	YW	SC		
+11	-1.7	+60	+22	+111	+1.26		
Marb	RE	Fat	\$M	\$W	\$F	\$G	\$B
+0.36	+0.77	+0.043	+75	+59	+94	+38	+132

Dam has 2@ 94BW, 2@ 106WR & 2@ 104YR. Excellent calving ease herdbull prospect with an impressive set of figures from our top producing cow family.

24

Bull

CAR HOMESTRETCH 486

21164700

calved - 01/29/24

B BAR WINDY 79
B BAR HOMESTRETCH 3047
B BAR QUEEN 304#

CROOK MT REALLY WINDY 141#
B BAR LADY JEWEL 116#
SITZ RLS ALLIANCE 7164
B BAR QUEEN 557#

CAR MOTIVE 423
CAR MISS MARIE 643
CAR MISS MARIE 0207

SOO LINE MOTIVE 9016#
CAR MISS HEATHER 446#
REDLAND RAINMAKER 3856
CAR MISS MARIE 318



BW	WW 10/8	205 wt	NR	365 wt	YR	ADG	Scrotal
77	766	673	97	1191	105	3.24	40.3
CED	BW	WW	Milk	YW	SC		
+0	+2.4	+54	+36	+105	+1.74		
Marb	RE	Fat	\$M	\$W	\$F	\$G	\$B
+0.39	+0.06	+0.054	+61	+52	+94	+30	+125

This big, stout Homestretch son will catch your eye. Loads of long term bred in longevity in this top producing cow family. Great maternal and performance package.

23

Bull

CAR JUNIPER 467

21160525

calved - 01/27/24

CAR HICKORY 547
CAR JUNIPER 211
CAR MISS JOSEPHINE 626

CAR CEDAR RIDGE 156
CAR MISS MARIE 3157
CAR MOTIVE 423
CAR MISS JOSEPHINE 9134

R B ACTIVE DUTY 010#
CAR MISS MARIE 5105#
CAR MISS MARIE 319

LCC NEW STANDARD#
B A LADY 6807 305
CAR INCREDIBULL 080
CAR MISS MARIE 7163#



BW	WW 10/8	205 wt	NR	365 wt	YR	ADG	Scrotal
75	814	711	103	1153	102	2.76	40.2
CED	BW	WW	Milk	YW	SC		
+11	+2.0	+73	+20	+123	+1.37		
Marb	RE	Fat	\$M	\$W	\$F	\$G	\$B
+0.48	+0.74	+0.006	+69	+65	+65	+46	+111

Dam is a 10yr old pathfinder cow with average ratios of 102BW, 108WR and 110YR. Our best cow family is behind this front end calving ease herdbull prospect with a tremendous set of figures. Notice dam is mother to reference sire CAR Butkus 1156.

25

Bull

CAR JUNIPER 408

21164387

calved - 01/19/24

CAR HICKORY 547
CAR JUNIPER 211
CAR MISS JOSEPHINE 626

CAR CEDAR RIDGE 156
CAR MISS MARIE 3157
CAR MOTIVE 423
CAR MISS JOSEPHINE 9134

CAR UNMISTAKABLE 556
CAR MISS MIKAYLA 999
CAR MISS MIKAYLA 510#

O C C UNMISTAKABLE 946U#
CAR LADY DIANA 9145#
CAR PRIMETRACKER 308#
CAR MISS MIKAYLA 209



BW	WW 10/8	205 wt	NR	365 wt	YR	ADG	Scrotal
78	814	701	101	1117	99	2.60	36.0
CED	BW	WW	Milk	YW	SC		
+6	+1.1	+58	+26	+98	+1.04		
Marb	RE	Fat	\$M	\$W	\$F	\$G	\$B
+0.50	+0.43	+0.042	+66	+57	+69	+41	+110

Dam is an excellent producing cow from a pathfinder dam that produced 14 calves. She produced 2 herdbulls for us in our program. This long made, eye appealing Juniper son could be used for heifer matings.



YEARLING BULLS



26
Bull
21163216 calved - 01/21/24
CAR RAINMAKER 424
BASIN RAINMAKER 4404#
S & V RAINMAKER 4044-1191
VA JUSTICE 6078
BASIN RAINMAKER 2704
BASIN JOY 1036
VA JUSTICE 0105-3253
VA JUSTICE 3150
BARTELS CONSENSUS 3809 649
CAR MISS CAROLINE 095
CAR MISS CAROLINE 752
CONNEALY CONSENSUS#
ELISHA OF CONANGA 868 988
GDAR REGULATOR 364#
CAR MISS CAROLINE 1109

BW	WW 10/8	205 wt	NR	365 wt	YR	ADG	Scrotal
68	824	726	105	1198	106	2.95	34.7
CED	BW	WW	Milk	YW	SC		
+10	+0.5	+69	+22	+114	+0.98		
Marb	RE	Fat	\$M	\$W	\$F	\$G	\$B
+0.17	+0.87	+0.11	+60	+64	+87	+33	+120

We really like the 5yr old dam with 3@ 94BW, 3@ 103WR and 3@ 108YR. Tremendous performance and maternal values in this very complete calving ease herdbull prospect that has the look.

28
Bull
21160491 calved - 01/29/24
CAR LEGENDARY 478
CONNEALY LEGENDARY 644L#
CAR LEGENDARY 026
CAR MISS LUCY 717#
QUAKER HILL RAMPAGE 0A36#
JAZZED OF CONANGA 4660
S A V RESOURCE 1441#
CAR MISS LUCY 301
CAR CEDAR RIDGE 156
CAR MISS MARIE 3157
CAR PRIMTRACKER 576
CAR PRIMROSE LADY 229#

BW	WW 10/8	205 wt	NR	365 wt	YR	ADG	Scrotal
73	836	748	108	1105	98	2.23	37.5
CED	BW	WW	Milk	YW	SC		
+9	-0.4	+73	+21	+128	+1.21		
Marb	RE	Fat	\$M	\$W	\$F	\$G	\$B
+0.42	+0.87	+0.08	+48	+64	+91	+45	+135

Impressive weaning weight on this eye appealing top calving ease herdbull prospect by Legendary.

27
Bull
21160515 calved - 01/19/24
CAR LEGENDARY 410
CONNEALY LEGENDARY 644L#
CAR LEGENDARY 026
CAR MISS LUCY 717#
QUAKER HILL RAMPAGE 0A36#
JAZZED OF CONANGA 4660
S A V RESOURCE 1441#
CAR MISS LUCY 301
BARSTOW CASH#
CAR MISS MIKAYLA 510#
CAR CEDAR RIDGE 156
CAR MISS VIKING 829

BW	WW 10/8	205 wt	NR	365 wt	YR	ADG	Scrotal
56	722	688	100	1216	108	3.30	37.0
CED	BW	WW	Milk	YW	SC		
+15	-0.3	+74	+18	+129	+1.24		
Marb	RE	Fat	\$M	\$W	\$F	\$G	\$B
+0.68	+0.65	+0.21	+47	+62	+93	+54	+146

Excellent figures on this sleep all night calving ease herdbull prospect by Legendary.

29
Bull
21160514 calved - 01/19/24
CAR BISMARCK 409
CAR BISMARCK 371
CAR BISMARCK 8190
CAR MISS MIKAYLA 530#
S A V BISMARCK 5682#
CAR MISS VIKING 9191
R B ACTIVE DUTY 010#
CAR MISS MIKAYLA 179#
BARSTOW CASH#
CAR MISS MIKAYLA 510#
CAR INCREDIBULL 496
CAR MISS WENDY 4121

BW	WW 10/8	205 wt	NR	365 wt	YR	ADG	Scrotal
79	798	688	110	1184	115	3.10	37.0
CED	BW	WW	Milk	YW	SC		
+5	+1.9	+62	+15	+108	+1.54		
Marb	RE	Fat	\$M	\$W	\$F	\$G	\$B
+0.28	+0.64	+0.33	+68	+50	+89	+34	+123

Tremendous figures, data and cow family behind this top eye catching herdbull prospect son of 8190 that could be used for heifer matings.



YEARLING BULLS



30

Bull

CAR LEGENDARY 455

21160497 calved - 01/25/24

CONNEALY LEGENDARY 644L#
CAR LEGENDARY 026
CAR MISS LUCY 717#

QUAKER HILL RAMPAGE 0A36#
JAZZED OF CONANGA 4660
S A V RESOURCE 1441#
CAR MISS LUCY 301
KROUPAL JUNEANU 797#
QUEEN ELBA 763U LAR
CAR EFFICIENT 904
CAR MISS KAREN 4129

LAR JUNEANU 796Y
CAR MISS KAREN 759
CAR MISS KAREN 284



BW	WW 10/8	205 wt	NR	365 wt	YR	ADG	Scrotal
77	810	705	102	1118	99	2.58	37.2
CED	BW	WW	Milk	YW	SC		
+5	+2.0	+68	+22	+125	+1.67		
Marb	RE	Fat	\$M	\$W	\$F	\$G	\$B
+0.49	+0.75	+0.08	+47	+57	+81	+47	+128

Good weaning weight on this potential calving ease prospect with top bred in maternal and carcass values.

32

Bull

CAR JUSTIFIED 428

21160575 calved - 01/22/24

KG JUSTIFIED 8007
RA JUSTIFIED 124
RA ERICA LASS 745

KG JUSTIFIED 3023#
KG BEAUTY 6766
SITZ ASSET 402C#
RA ERICA LASS C16#
S A V BISMARCK 5682#
CAR MISS VIKING 9191
CAR NEW DAY 7162
CAR TARESA 655#

CAR BISMARCK 371
CAR MISS TARESA 8185
CAR MISS TARESA 963#



BW	WW 10/8	205 wt	NR	365 wt	YR	ADG	Scrotal
83	814	706	102	1159	103	2.83	37.1
CED	BW	WW	Milk	YW	SC		
-1	+3.2	+59	+28	+103	+0.93		
Marb	RE	Fat	\$M	\$W	\$F	\$G	\$B
+0.35	+0.39	+0.040	+53	+55	+76	+33	+110

Dam is an ideal angus cow with 3 consecutive generations of pathfinder dams backing her. Outcross genetics on this big stout Justified son.



33

Bull

CAR RAINMAKER 462

21160487 calved - 01/26/24

BASIN RAINMAKER 4404#
S & V RAINMAKER 4044-1191
VA JUSTICE 6078

BASIN RAINMAKER 2704
BASIN JOY 1036
VA JUSTICE 0105-3253
VA JUSTICE 3150
KROUPAL JUNEANU 797#
QUEEN ELBA 763U LAR
CAR PRIMETRACKER 802
CAR LADY DIANA 9199

LAR JUNEANU 796Y
CAR LADY DIANA 9168
CAR LADY DIANA 3137



BW	WW 10/8	205 wt	NR	365 wt	YR	ADG	Scrotal
74	786	686	99	1137	100	2.82	37.7
CED	BW	WW	Milk	YW	SC		
+3	+1.3	+56	+19	+97	+1.05		
Marb	RE	Fat	\$M	\$W	\$F	\$G	\$B
+0.12	+0.36	+0.002	+47	+43	+63	+25	+88

Excellent calving ease prospect from this soggy made Rainmaker son out of a really productive cow family.

31

Bull

CAR RAINFALL 474

21160547 calved - 01/27/24

BASIN RAINMAKER 4404#
S & V RAINMAKER 4044-1191
VA JUSTICE 6078

BASIN RAINMAKER 2704
BASIN JOY 1036
VA JUSTICE 0105-3253
VA JUSTICE 3150
S A V BISMARCK 5682#
CAR MISS VIKING 9191
CAR RIDGERUNNER 660
C A R DIANA 842#

CAR BISMARCK 371
CAR MISS DIANA 7167
CAR MISS DIANA 941#



BW	WW 10/8	205 wt	NR	365 wt	YR	ADG	Scrotal
74	812	709	103	1135	101	2.66	38.2
CED	BW	WW	Milk	YW	SC		
+8	+1.6	+58	+35	+98	+0.95		
Marb	RE	Fat	\$M	\$W	\$F	\$G	\$B
+0.25	+0.71	+0.043	+63	+64	+92	+32	+125

Dam is a prolific 8yr old cow with average ratios on her progeny of 102BW, 107WR and 103YR. Three consecutive generations of pathfinder cows and four consecutive generations of cows raising 12 or more calves each. Excellent maternal and performance traits in this top calving ease herdbull prospect by Rainmaker.

34

Bull

CAR RAINMAKER 447

21160533 calved - 01/24/24

BASIN RAINMAKER 4404#
S & V RAINMAKER 4044-1191
VA JUSTICE 6078

BASIN RAINMAKER 2704
BASIN JOY 1036
VA JUSTICE 0105-3253
VA JUSTICE 3150
KROUPAL JUNEANU 797#
QUEEN ELBA 763U LAR
CAR CHINNOOK 786#
CAR MISS TARESA 755#

LAR JUNEANU 796Y
CAR MISS TARESA 464
CAR MISS TARESA 167#



BW	WW 10/8	205 wt	NR	365 wt	YR	ADG	Scrotal
75	828	741	107	1144	101	2.52	40.2
CED	BW	WW	Milk	YW	SC		
+0	+4.3	+82	+12	+136	+1.52		
Marb	RE	Fat	\$M	\$W	\$F	\$G	\$B
+0.07	+1.14	-0.025	+30	+49	+117	+34	+151

Five generations of pathfinder dams behind this big, stout herdbull prospect by Rainmaker with a big scrotal and ribeye.



YEARLING BULLS



35
Bull
21164389 calved - 01/20/24
CAR LEGENDARY 414
CONNEALY LEGENDARY 644L#
CAR LEGENDARY 026
CAR MISS LUCY 717#
CAR MOTIVE 423
CAR MISS MARIE 619
CAR MISS MARIE 2178

QUAKER HILL RAMPAGE 0A36#
JAZZED OF CONANGA 4660
S A V RESOURCE 1441#
CAR MISS LUCY 301
SOO LINE MOTIVE 9016#
CAR MISS HEATHER 446#
JENNAWAY GAME DAY 024
CAR MISS MARIE 031#

BW	WW 10/8	205 wt	NR	365 wt	YR	ADG	Scrotal
64	786	676	98	1068	95	2.45	35.0
CED	BW	WW	Milk	YW	SC		
+13	-0.4	+68	+16	+119	+0.56		
Marb	RE	Fat	\$M	\$W	\$F	\$G	\$B
+0.57	+1.03	+0.029	+35	+56	+97	+52	+149

Nine year old dam has an average BR of 96, WR of 102 & YR of 102 on progeny. Eye catching calving ease herdbull prospect by Legendary that we really like.

37
Bull
21160516 calved - 01/24/24
CAR BRAVO 449
COLEMAN BRAVO 6313#
CAR BRAVO 151
CAR MISS DIANA 598#
BYERGO COLONEL G14
CAR MISS DIANA 243
CAR MISS DIANA 127

COLEMAN CHARLO 0256#
COLEMAN DONNA 714
CAR EFFICIENT 534#
CAR MISS DIANA 3111
BALDRIDGE COLONEL C251#
BYERGO CLOVER 850
CAR DUKE 865
CAR MISS DIANA 7104

BW	WW 10/8	205 wt	NR	365 wt	YR	ADG	Scrotal
62	742	712	111	1206	114	3.09	37.7
CED	BW	WW	Milk	YW	SC		
+4	+1.1	+61	+22	+111	+1.05		
Marb	RE	Fat	\$M	\$W	\$F	\$G	\$B
+0.55	+0.60	+0.034	+65	+58	+76	+46	+122

Out of a 1st calf heifer. Excellent high indexing calving ease herdbull prospect by Bravo with a balanced set of numbers.

36
Bull
21160486 calved - 01/26/24
CAR SWAGGER 463
MARDA SWAGGER 463
WINDY RIDGE SWAGGER 714
WINDY RIDGE ROSE 312
D J V EXCITEMENT 591
CAR MISS DIANA 7210
CAR MISS DIANA 4148

CONNEALY CONFIDENCE 0100#
MF BLACKBIRD 51
WINDY RIDGE DAYLIGHT 104
WINDY RIDGE ROSE 117
BASIN EXCITEMENT#
D J V KEM 3145
CAR CHINNOOK1119
CAR MISS DIANA 2120#

BW	WW 10/8	205 wt	NR	365 wt	YR	ADG	Scrotal
69	842	733	106	1040	92	1.92	35.7
CED	BW	WW	Milk	YW	SC		
+12	+0.3	+71	+34	+123	+0.63		
Marb	RE	Fat	\$M	\$W	\$F	\$G	\$B
+0.56	+0.49	+0.023	+69	+75	+72	+46	+118

Excellent weaning weight on this top calving ease herdbull prospect by Swagger. Balanced set of numbers.

38
Bull
21160537 calved - 01/21/24
CAR JUSTIFIED 419
KG JUSTIFIED 8007
RA JUSTIFIED 124
RA ERICA LASS 745
CONNEALY BLACK GRANITE#
CAR MISS MARIE 553
CAR MISS MARIE 994

KG JUSTIFIED 3023#
KG BEAUTY 6766
SITZ ASSET 402C#
RA ERICA LASS C16#
CONNEALY CONSENSUS 7229#
EURA ELGA OF CONANGA 9109#
CAR CHINNOOK 786#
C A R MISS MARIE 701

BW	WW 10/8	205 wt	NR	365 wt	YR	ADG	Scrotal
77	796	688	100	1139	101	2.82	37.6
CED	BW	WW	Milk	YW	SC		
+9	+2.2	+75	+28	+132	+0.76		
Marb	RE	Fat	\$M	\$W	\$F	\$G	\$B
+0.62	+0.80	+0.021	+55	+68	+114	+53	+167

Good weaning weight and our best cow family behind this top Justified son with an attractive set of numbers.



YEARLING BULLS



41 Bull

CAR JUSTIFIED 456

21160507

calved - 01/25/24

KG JUSTIFIED 8007
RA JUSTIFIED 124
RA ERICA LASS 745

KG JUSTIFIED 3023#
KG BEAUTY 6766
SITZ ASSET 402C#
RA ERICA LASS C16#
KOUPL JUNEANU 797#
QUEEN ELBA 763U LAR
CAR TRACKER 904#
C A R MISS DONNA 781

LAR JUNEANU 796Y
CAR MISS DONNA 6174
CAR MISS DONNA 923



BW	WW 10/8	205 wt	NR	365 wt	YR	ADG	Scrotal
72	748	651	94	1198	106	3.42	39.2
CED	BW	WW	Milk	YW	SC		
+8	+1.0	+74	+23	+127	+2.22		
Marb	RE	Fat	\$M	\$W	\$F	\$G	\$B
+0.41	+1.15	+0.10	+59	+67	+87	+36	+123

Lots of long term bred in longevity in this cow family. The dam (6174) has proven her mothering ability to the most extreme degree; having calved in -30 weather without any human interaction, out on the plains and still brought in a calf in perfect health and no frost bitten ears. Powerful maternal genetics in this top gaining calving ease prospect.

39 Bull

CAR REMARKABLE 438

21160484

calved - 01/23/24

CAR REMARKABLE 640
CAR REMARKABLE 821
CAR MISS HEATHER 5167#

S A V RESOURCE 1441#
CAR MISS MARIE 769#
CAR CEDAR RIDGE 156
CAR MISS HEATHER 2197
JENNAWAY GAME DAY 024
CAR MISS MARIE 8212#
PREMIER CHAIRMAN 6011A#
C A R MISS MARIE 701



CAR GAME DAY 406
CAR MISS MARIE 689
CAR MISS MARIE 4104#

BW	WW 10/8	205 wt	NR	365 wt	YR	ADG	Scrotal
68	810	701	101	1067	94	2.29	40.1
CED	BW	WW	Milk	YW	SC		
+8	+0.4	+52	+27	+89	+1.41		
Marb	RE	Fat	\$M	\$W	\$F	\$G	\$B
+0.35	+1.25	-0.27	+51	+55	+79	+48	+127

Three generations of pathfinder donor dams with long term bred in longevity behind this heavy weaning weight, calving ease prospect by Remarkable.

42 Bull

CAR RAINMAKER 416

21160570

calved - 01/20/24

BASIN RAINMAKER 4404#
S & V RAINMAKER 4044-1191
VA JUSTICE 6078

BASIN RAINMAKER 2704
BASIN JOY 1036
VA JUSTICE 0105-3253
VA JUSTICE 3150
LCC NEW STANDARD#
B A LADY 6807 305
CAR SUPER X 223
CAR MISS CATHERINE 286



R B ACTIVE DUTY 010#
CAR MISS CATHERINE 532
CAR MISS CATHERINE 504

BW	WW 10/8	205 wt	NR	365 wt	YR	ADG	Scrotal
72	746	644	100	1135	107	3.07	35.0
CED	BW	WW	Milk	YW	SC		
+10	+0.1	+67	+30	+104	+0.91		
Marb	RE	Fat	\$M	\$W	\$F	\$G	\$B
+0.55	+0.37	+0.38	+89	+76	+70	+43	+113

Ten year old dam has an average of 98BR, 102WR and 101YR. There is 6 generations of bred in calving ease behind this top Rainmaker son.

40 Bull

CAR RAINMAKER 429

21160576

calved - 01/22/24

BASIN RAINMAKER 4404#
S & V RAINMAKER 4044-1191
VA JUSTICE 6078

BASIN RAINMAKER 2704
BASIN JOY 1036
VA JUSTICE 0105-3253
VA JUSTICE 3150
G A R RETAIL PRODUCT#
EXECUTA OF CONANGA 939#
CAR TRACKER 219
CAR WENDY 053#



CONNEALY MENTOR 7374#
CAR MISS WENDY 414#
CAR MISS WENDY 7205

BW	WW 10/8	205 wt	NR	365 wt	YR	ADG	Scrotal
77	798	713	103	1164	103	2.82	36.2
CED	BW	WW	Milk	YW	SC		
+11	+1.0	+57	+30	+102	+1.44		
Marb	RE	Fat	\$M	\$W	\$F	\$G	\$B
+0.61	+0.38	+0.091	+38	+56	+82	+42	+124

Dam is an 11yr old pathfinder cow. Excellent calving ease herd bull prospect by Justified from a great producing cow family.

Connelly Angus Ranch



Everyone is invited to a
Pre-Sale CAB Prime Rib Dinner
Monday, February 24, 6:00 pm
at the Ranch, North of Valier.





YEARLING BULLS



43

Bull

21168509

calved - 01/26/24

CAR LEGENDARY 464

CONNEALY LEGENDARY 644L#
CAR LEGENDARY 026
CAR MISS LUCY 717#

QUAKER HILL RAMPAGE 0A36#
JAZZED OF CONANGA 4660
S A V RESOURCE 1441#
CAR MISS LUCY 301
CAR REMARKABLE 640
CAR MISS MIKAYLA 510#
LAR WINDY 64 4235#
CAR MISS HEATHER 798#



BW	WW 10/8	205 wt	NR	365 wt	YR	ADG	Scrotal
60	722	697	101	1172	104	2.97	36.2
CED	BW	WW	Milk	YW	SC		
+12	-0.4	+63	+30	+121	+0.90		
Marb	RE	Fat	\$M	\$W	\$F	\$G	\$B
+0.54	+53	+0.23	+55	+60	+81	+45	+127

Out of a 1st calf heifer. 15yr old granddam is still in production. Really well put together eye appealing calving ease herdbull prospect by Legendary.



44

Bull

21164395

calved - 01/22/24

CAR LEGENDARY 435

CONNEALY LEGENDARY 644L#
CAR LEGENDARY 026
CAR MISS LUCY 717#

QUAKER HILL RAMPAGE 0A36#
JAZZED OF CONANGA 4660
S A V RESOURCE 1441#
CAR MISS LUCY 301
LAR WINDY 64 4235#
CAR MISS TARESA 663#
CAR EFFICIENT 904
CAR MISS MIKAYLA 8140



BW	WW 10/8	205 wt	NR	365 wt	YR	ADG	Scrotal
75	768	665	96	1219	108	3.46	37.1
CED	BW	WW	Milk	YW	SC		
+12	-0.7	+45	+25	+89	+1.30		
Marb	RE	Fat	\$M	\$W	\$F	\$G	\$B
+0.18	+45	+0.85	+46	+45	+73	+23	+96

Granddam is a pathfinder. Dam is a model angus cow. Eye catching calving ease herdbull prospect by Legendary that gained well on test.



45

Bull

21160577

calved - 01/29/24

CAR PACIFIC 480

STERLING PACIFIC 904
CAR PACIFIC 258
CAR MISS AMY 686

HOOVER NO DOUBT
BALDRIDGE ISABEL B082
CAR GAME DAY 406
CAR MISS AMY 8113
LAR JUNEANU 796Y
CAR MISS DIANA 0101#
R B ACTIVE DUTY 010#
CAR MISS MARIE 319



BW	WW 10/8	205 wt	NR	365 wt	YR	ADG	Scrotal
75	808	709	103	1109	98	2.50	36.3
CED	BW	WW	Milk	YW	SC		
+6	+1.1	+76	+10	+127	+1.32		
Marb	RE	Fat	\$M	\$W	\$F	\$G	\$B
+0.36	+81	-0.25	+29	+55	+88	+44	+131

Granddam is a 10yr old pathfinder with 8@ 108WR. Our best cow family behind this stout made calving ease herdbull prospect by Pacific with an impressive set of figures.





YEARLING BULLS



46 Bull

CAR RAINMAKER 448

21160535

calved - 01/24/24

BASIN RAINMAKER 4404#
S & V RAINMAKER 4044-1191
VA JUSTICE 6078

BASIN RAINMAKER 2704
BASIN JOY 1036
VA JUSTICE 0105-3253
VA JUSTICE 3150

CAR DUKE 504
CAR MISS DIANA 635
CAR MISS DIANA 941#

CAR DUKE 316
C A R MARIE 818
CAR RIDGERUNNER 660
C A R DIANA 842#



BW	WW 10/8	205 wt	NR	365 wt	YR	ADG	Scrotal
77	748	651	94	1129	100	2.99	38.1
CED	BW	WW	Milk	YW	SC		
+0	+3.0	+57	+26	+101	+1.31		
Marb	RE	Fat	\$M	\$W	\$F	\$G	\$B
+0.46	+0.69	+0.020	+41	+46	+89	+44	+133

Three consecutive generations of pathfinder cows and four generations of cows averaging 13 calves each. Great maternal values and bred in longevity in this smooth made Rainmaker son.



48 Bull

CAR MISSING LINK 4178

21160563

calved - 02/14/24

JBOB MISSING LINK 935
CAR MISSING LINK 1256
CAR MISS HEATHER 907

O C C MISSING LINK 830M#
CAR MISS MARIE 048
CAR HICKORY 547
CAR MISS HEATHER 2169

CAR LEAD ON 2106
CAR MISS VIKING 5211
CAR MISS VIKING 5145

CONNEALY LEAD ON#
CAR MISS DIANA 8110#
CAR ICEBERG 232
C A R MISS VIKING 604



BW	WW 10/8	205 wt	NR	365 wt	YR	ADG	Scrotal
78	792	721	112	1225	116	3.15	38.8
CED	BW	WW	Milk	YW	SC		
+1	+2.7	+64	+34	+108	+1.81		
Marb	RE	Fat	\$M	\$W	\$F	\$G	\$B
+0.26	+0.20	+0.031	+34	+63	+76	+28	+104

Dam is a really productive 10yr old cow in our program. A lot of great cows tied up in this top end herdbull prospect by Missing Link.

49 Bull

CAR RAINFALL 4169

21160550

calved - 02/12/24

S A V RAINFALL 6846
BIG DRY RAINFALL H35
BDAR RUBY 747E

COLEMAN CHARLO 0256#
S A V BLACKCAP MAY 4136
SITZ ROYAL 9784
BDAR RUBY 406C

CAR DURABULL LINE 575
CAR MISS MARIE 1188
CAR MISS MARIE 7207#

CAR 865 DUKE 3200
CAR MISS MARIE 3184#
CAR INCREDIBULL 496
CAR MISS MARIE 178



BW	WW 10/8	205 wt	NR	365 wt	YR	ADG	Scrotal
77	828	786	126	1242	121	2.85	40.8
CED	BW	WW	Milk	YW	SC		
+6	+1.4	+65	+32	+114	+2.22		
Marb	RE	Fat	\$M	\$W	\$F	\$G	\$B
+0.75	+0.74	-0.002	+77	+72	+77	+60	+137

Granddam is a pathfinder. Dam has 2@ 103BW, 2@ 114WR and 2@ 121YR. Look at the performance and carcass traits on this big scrotaled calving ease herdbull prospect by Rainfall and the powerful producing cow family backing him.

47 Bull

CAR RAINMAKER 4145

21160536

calved - 02/07/24

BASIN RAINMAKER 4404#
S & V RAINMAKER 4044-1191
VA JUSTICE 6078

BASIN RAINMAKER 2704
BASIN JOY 1036
VA JUSTICE 0105-3253
VA JUSTICE 3150

CAR CHINNOOK 786#
CAR MISS MARIE 878
CAR MISS MARIE 358#

A A R REALLY WINDY 1205#
CAR MISS MARIE 5109
E 7 GURU 1375
CAR MARIE 0108



BW	WW 10/8	205 wt	NR	365 wt	YR	ADG	Scrotal
78	800	716	104	1161	103	2.78	36.6
CED	BW	WW	Milk	YW	SC		
+11	+1.5	+57	+22	+98	+0.61		
Marb	RE	Fat	\$M	\$W	\$F	\$G	\$B
+0.56	+0.83	+0.002	+36	+48	+89	+51	+141

Pathfinder granddam produced 16 calves in her lifetime. Dam is one of those "never miss" cows that we will have for a long time. A real promising calving ease herdbull prospect that is the complete package.

50 Bull

CAR YEHTI 4128

21160528

calved - 02/05/24

PAHR YETI B5#
CAR YEHTI 973
CAR MISS MIKAYLA 760

BASIN PAYWEIGHT 1682#
PAHR RITA Q28 OF 0151 90Q20
CAR DURABULL LINE 575
CAR MISS MIKAYLA 179#

CAR GAME DAY 406
CAR MISS MARIE 0159
CAR MISS MARIE 647

JENNAWAY GAME DAY 024
CAR MISS MARIE 8212#
S A V RESOURCE 1441#
CAR MISS MARIE 606



BW	WW 10/8	205 wt	NR	365 wt	YR	ADG	Scrotal
78	784	714	103	1143	101	2.68	37.7
CED	BW	WW	Milk	YW	SC		
+6	+1.5	+68	+24	+111	+0.95		
Marb	RE	Fat	\$M	\$W	\$F	\$G	\$B
+0.38	+0.45	+0.051	+61	+68	+84	+35	+119

These Yeti sons are always popular on sale day. We are really impressed with the Yeti daughters in our program. Strong herdbull prospect from a great cow family.



YEARLING BULLS



51

Bull

CAR BISMARK 487

21163217 calved - 01/29/24

CAR BISMARK 371
CAR BISMARK 8190
CAR MISS MIKAYLA 530#

S A V BISMARCK 5682#
CAR MISS VIKING 9191
R B ACTIVE DUTY 010#
CAR MISS MIKAYLA 179#
LAR JUNEANU 796Y
CAR MISS DIANA 0101#
VERMILION DATELINE 7078#
C A R MISS DONNA 781



BW	WW 10/8	205 wt	NR	365 wt	YR	ADG	Scrotal
76	804	705	102	1121	99	2.60	41.3
CED	BW	WW	Milk	YW	SC		
+9	-0.9	+43	+24	+71	+2.23		
Marb	RE	Fat	\$M	\$W	\$F	\$G	\$B
+0.43	+0.44	+0.055	+69	+48	+70	+37	+107

Dam is 10yrs old and has been doing an outstanding job for us. We really like these 8190 Bismark calves. They just do everything right. Really good big scrotaled calving ease prospect.



53

Bull

CAR LEGENDARY 4101

21160499 calved - 02/01/24

CONNEALY LEGENDARY 644L#
CAR LEGENDARY 026
CAR MISS LUCY 717#

QUAKER HILL RAMPAGE 0A36#
JAZZED OF CONANGA 4660
S A V RESOURCE 1441#
CAR MISS LUCY 301

CAR DURABULL 056
CAR MISS MARIE 2196
CAR MISS MARIE 0226

CAR DURABULL LINE 575
CAR MISS VIKING 624#
FOOS REVOLUTION 243
CAR MISS MARIE 7180



BW	WW 10/8	205 wt	NR	365 wt	YR	ADG	Scrotal
73	724	708	104	1215	106	3.17	37.4
CED	BW	WW	Milk	YW	SC		
+7	+1.4	+63	+21	+107	+1.25		
Marb	RE	Fat	\$M	\$W	\$F	\$G	\$B
+0.68	+0.55	+0.021	+57	+57	+78	+53	+131

Out of a 1st calf heifer. Another top calving ease herdbull prospect by Legendary.

52

Bull

CAR BISMARK 437

21164396 calved - 01/23/24

CAR BISMARK 371
CAR BISMARK 8190
CAR MISS MIKAYLA 530#

S A V BISMARCK 5682#
CAR MISS VIKING 9191
R B ACTIVE DUTY 010#
CAR MISS MIKAYLA 179#
O C C UNMISTAKABLE 946U#
CAR LADY DIANA 9145#
REDLAND RAINMAKER 3856
CAR MISS CAROLINE 7217



BW	WW 10/8	205 wt	NR	365 wt	YR	ADG	Scrotal
70	772	669	97	1114	99	2.78	38.6
CED	BW	WW	Milk	YW	SC		
+8	+0.8	+52	+19	+96	+1.33		
Marb	RE	Fat	\$M	\$W	\$F	\$G	\$B
+0.08	+0.59	+0.065	+62	+45	+93	+21	+114

Real productive cow family behind this attractive calving ease prospect by Bismark.

54

Bull

CAR VERSATILE 461

21160524 calved - 01/26/24

BALDRIDGE VERSATILE
CAR VERSATILE 255
CAR PRIMROSE LADY 091#

BALDRIDGE FORECASTER B160
BALDRIDGE BLACKBIRD A030
LAR WINDY 64 423S#
CAR PRIMROSE LADY 691

CAR TEN X 107
CAR MISS ROBERTA 5182
CAR MISS ROBERTA 2176

A A R TEN X 7008 S A#
CAR MISS AMY 121#
K C F BENNETT ENERGIZER W474
CAR MISS ROBERTA 895



BW	WW 10/8	205 wt	NR	365 wt	YR	ADG	Scrotal
76	758	662	96	1163	103	3.13	37.2
CED	BW	WW	Milk	YW	SC		
+6	+2.9	+65	+20	+115	+1.69		
Marb	RE	Fat	\$M	\$W	\$F	\$G	\$B
+0.55	+0.27	+0.041	+51	+53	+74	+42	+115

Good weaning weight on this very complete versatile son.



YEARLING BULLS



55 Bull

CAR ARMSTRONG 4109

21167174

calved - 02/02/24

S ARCHITECT 9501
S ARMSTRONG
S QUEEN ESSA 7149#

SYDGEN BLUEPRINT
S BLOSSOM 7514
S FOUNDATION 514#
S QUEEN ESSA 960
CONNEALY LEGENDARY 644L#
CAR MISS LUCY 717#
CAR BUSHWACKER 618
CAR MISS PATTY 897#



CAR LEGENDARY 026
CAR MISS PATTY 2121
CAR MISS PATTY 0150

BW	WW 10/8	205 wt	NR	365 wt	YR	ADG	Scrotal
72	734	718	112	1180	112	2.89	35.4
CED	BW	WW	Milk	YW	SC		
+8	+1.1	+82	+27	+136	+0.45		
Marb	RE	Fat	\$M	\$W	\$F	\$G	\$B
+0.58	+84	+0.061	+94	+85	+109	+48	+157

Out of a 1st calf heifer. Impressive data behind this top end outcross calving ease herdbull prospect by Armstrong out of an outstanding young Legendary daughter.

57 Bull

CAR YETI 4191

21160538

calved - 02/16/24

PAHR YETI B5#
CAR YETI 973
CAR MISS MIKAYLA 760

BASIN PAYWEIGHT 1682#
PAHR RITA Q28 OF 0151 9Q20
CAR DURABULL LINE 575
CAR MISS MIKAYLA 179#
SVR REVOLUTION 4129
FOOS HAZEL 243
BARSTOW CASH#
CAR MISS BRENDA 3132



FOOS REVOLUTION 243
CAR MISS BRENDA 125
CAR MISS BRENDA 585#

BW	WW 10/8	205 wt	NR	365 wt	YR	ADG	Scrotal
68	820	786	126	1252	122	2.91	37.4
CED	BW	WW	Milk	YW	SC		
+11	+0.0	+63	+17	+103	+1.38		
Marb	RE	Fat	\$M	\$W	\$F	\$G	\$B
+0.21	+25	-0.001	+74	+58	+54	+28	+82

Granddam is a 10yr old pathfinder. Look at the impressive indexes on this top calving ease herdbull prospect by Yeti from a real productive young Revolution daughter.



58 Bull

CAR COLONEL 417

21160534

calved - 01/20/24

BALDRIDGE COLONEL C251#
BYERGO COLONEL G14
BYERGO CLOVER 850

BALDRIDGE XPAND X743
BALDRIDGE ISABEL Y69
LCC NEW STANDARD#
BYERGO CLOVER 513
BARSTOW CASH#
CAR MISS MIKAYLA 510#
CAR BISMARCK 371
CAR PRIMROSE LADY 416



CAR CHA CHING 528
CAR PRIMROSE LADY 081
CAR PRIMROSE LADY 6180

BW	WW 10/8	205 wt	NR	365 wt	YR	ADG	Scrotal
70	752	663	96	1085	96	2.64	36.2
CED	BW	WW	Milk	YW	SC		
+10	-2.2	+44	+22	+81	+0.17		
Marb	RE	Fat	\$M	\$W	\$F	\$G	\$B
+0.67	+43	+0.016	+33	+41	+82	+51	+133

Good weaning weight on this sleep all night outcross calving ease prospect by Colonel.

56 Bull

CAR BISMARCK 446

21160530

calved - 01/24/24

CAR BISMARCK 371
CAR BISMARCK 8190
CAR MISS MIKAYLA 530#

S A V BISMARCK 5682#
CAR MISS VIKING 9191
R B ACTIVE DUTY 010#
CAR MISS MIKAYLA 179#
G A R RETAIL PRODUCT#
EXECUTA OF CONANGA 939#
CAR JUSTICE 754
CAR MISS MARIE 8127



CONNEALY MENTOR 7374#
CAR MISS MARIE 0121
CAR MISS MARIE 0189#

BW	WW 10/8	205 wt	NR	365 wt	YR	ADG	Scrotal
70	772	685	99	1144	101	2.87	41.8
CED	BW	WW	Milk	YW	SC		
+16	-2.7	+50	+26	+87	+2.06		
Marb	RE	Fat	\$M	\$W	\$F	\$G	\$B
+0.48	+46	+0.098	+77	+61	+62	+36	+99

Pathfinder granddam produced 12 calves in her lifetime. Good weaning weight on this top eye appealing herdbull prospect with top of the breed calving ease figures.

59 Bull

CAR LEGENDARY 4122

21160510

calved - 02/04/24

CONNEALY LEGENDARY 644L#
CAR LEGENDARY 026
CAR MISS LUCY 717#

QUAKER HILL RAMPAGE 0A36#
JAZZED OF CONANGA 4660
S A V RESOURCE 1441#
CAR MISS LUCY 301
LAR JUNEANU 796Y
CAR MISS JULIE 667
CAR GAME DAY 2217
CAR MISS MARIE 3138



CAR JUNEANU 7213
CAR MISS MARIE 2221
CAR MISS MARIE 5222

BW	WW 10/8	205 wt	NR	365 wt	YR	ADG	Scrotal
62	698	688	100	1203	107	3.22	39.5
CED	BW	WW	Milk	YW	SC		
+9	-1.1	+65	+16	+120	+2.08		
Marb	RE	Fat	\$M	\$W	\$F	\$G	\$B
+0.26	+78	-0.019	+40	+51	+81	+38	+119

Out of a 1st calf heifer. Sleep all night calving ease herdbull prospect by Legendary.



YEARLING BULLS



60

Bull

CAR LEGENDARY 489

21160502 calved - 01/29/24

CONNEALY LEGENDARY 644L#
CAR LEGENDARY 026
CAR MISS LUCY 717#

QUAKER HILL RAMPAGE 0A36#
JAZZED OF CONANGA 4660
S A V RESOURCE 1441#
CAR MISS LUCY 301

CAR EVEREADY 9211
CAR PRIMROSE LADY 2230
CAR PRIMROSE LADY 5124#

NF EVEREADY B150
CAR MISS JODY 4222
CAR LEAD ON 2106
CAR PRIMROSE LADY 549



BW	WW 10/8	205 wt	NR	365 wt	YR	ADG	Scrotal
66	748	724	113	1162	110	2.74	33.3
CED	BW	WW	Milk	YW	SC		
+8	-1.0	+60	+33	+105	+1.49		
Marb	RE	Fat	\$M	\$W	\$F	\$G	\$B
+0.45	+0.61	+0.042	+52	+66	+95	+41	+136

Out of a 1st calf heifer. Lots of long term proven bred in longevity behind this high indexing calving ease prospect by Legendary.

62

Bull

CAR RAINMAKER 440

21160527 calved - 01/24/24

BASIN RAINMAKER 4404#
S & V RAINMAKER 4044-1191
VA JUSTICE 6078

BASIN RAINMAKER 2704
BASIN JOY 1036
VA JUSTICE 0105-3253
VA JUSTICE 3150

CAR MOTIVE 777
CAR MISS ZARA 9228
CAR MISS ZARA 543#

CAR MOTIVE 423
CAR MISS BAILEY 694
CAR PRIMETRACKER 308#
WRAF LADY ZARA#



BW	WW 10/8	205 wt	NR	365 wt	YR	ADG	Scrotal
68	754	655	95	1114	99	2.87	36.2
CED	BW	WW	Milk	YW	SC		
+11	-0.5	+48	+20	+82	+1.19		
Marb	RE	Fat	\$M	\$W	\$F	\$G	\$B
-0.01	+0.34	+0.046	+63	+45	+59	+15	+75

Pathfinder granddam produced her last calf at 17. Tremendous bred in fertility and longevity on this top calving ease prospect by Rainmaker.



63

Bull

CAR JUNIPER 475

21164398 calved - 01/28/24

CAR HICKORY 547
CAR JUNIPER 211
CAR MISS JOSEPHINE 626

CAR CEDAR RIDGE 156
CAR MISS MARIE 3157
CAR MOTIVE 423
CAR MISS JOSEPHINE 9134

CAR UNMISTAKABLE 556
CAR MISS MARIE 858
CAR MISS MARIE 031#

O C C UNMISTAKABLE 946U#
CAR LADY DIANA 9145#
CAR INCREDIBULL 820
CAR MISS MARIE 483



BW	WW 10/8	205 wt	NR	365 wt	YR	ADG	Scrotal
85	754	662	103	1153	109	3.07	37.3
CED	BW	WW	Milk	YW	SC		
+0	+6.2	+56	+17	+93	+1.02		
Marb	RE	Fat	\$M	\$W	\$F	\$G	\$B
+0.78	+0.33	-0.001	+67	+33	+55	+56	+112

Granddam is a 15yr old pathfinder still in production. Powerful producing cow family behind this good indexing, high marbling son of Juniper.

61

Bull

CAR PAYWEIGHT 4153

21160571 calved - 02/09/24

BASIN PAYWEIGHT 1682#
LARSEN PAYWEIGHT 96X
LARSEN BLACKBIRD 221P#

BASIN PAYWEIGHT 0065#
21AR O LASS 7017
LARSEN TRAILHEAD 36M
LARSEN BLACKBIRD 74L

COLEMAN BRAVO 6313#
CAR MISS VIKING 131
CAR MISS VIKING 1132

COLEMAN CHARLO 0256#
COLEMAN DONNA 714
CAR HERO 631
CAR MISS VIKING 7124



BW	WW 10/8	205 wt	NR	365 wt	YR	ADG	Scrotal
68	736	698	101	1176	104	2.99	38.2
CED	BW	WW	Milk	YW	SC		
+3	+2.3	+70	+24	+122	+1.34		
Marb	RE	Fat	\$M	\$W	\$F	\$G	\$B
+0.03	+0.15	+0.039	+60	+61	+112	+15	+127

Here is an eye catching Payweight son that exhibits tremendous volume and thickness and a light birth weight.





YEARLING BULLS



66 Bull

CAR FORGE 4175

21163224

calved - 02/14/24

PGC FORGE
PGC FORGE 101
ABP MISS OKIE 819

CONNEALY CAPITALIST 028#
PGC SHOESHONE GIRL 4106#
CAR MOTIVE 512
ABP MISS INFINITY 614
CAR HERO 631
CAR MISS CAROLINE 7217
CAR BUSHWACKER 884
CAR MISS MARIE 827

CAR HERO 9143
CAR MISS MARIE 229
CAR MISS MARIE 0158



BW	WW 10/8	205 wt	NR	365 wt	YR	ADG	Scrotal
71	738	693	108	1178	112	3.03	37.2
CED	BW	WW	Milk	YW	SC		
+2	+2.4	+66	+21	+122	+1.16		
Marb	RE	Fat	\$M	\$W	\$F	\$G	\$B
+0.34	+0.54	+0.018	+61	+52	+97	+36	+133

Dam is a 13yr old top producing Hero daughter. Moderate statured, extra thick and deep made best describe this top calving ease prospect by Forge.

64 Bull

CAR MISSING LINK 4151

21160554

calved - 02/08/24

JBOB MISSING LINK 935
CAR MISSING LINK 1256
CAR MISS HEATHER 907

O C C MISSING LINK 830M#
CAR MISS MARIE 048
CAR HICKORY 547
CAR MISS HEATHER 2169

BUBS SOUTHERN CHARM AA31#
CAR MISS WILMA 959
CAR MISS WILMA 774

SILVEIRAS CONVERSION 8064
HICKORY HILL ERICA 009
CAR HICKORY 547
CAR MISS WILMA 508#



BW	WW 10/8	205 wt	NR	365 wt	YR	ADG	Scrotal
79	736	661	103	1218	115	3.48	40.1
CED	BW	WW	Milk	YW	SC		
+4	+4.2	+78	+26	+120	+2.07		
Marb	RE	Fat	\$M	\$W	\$F	\$G	\$B
+0.23	+0.84	+0.045	+77	+72	+61	+33	+94

This herd bull prospect by Missing Link 1256 is big scrotaled. He gained well on test and is an eye catching thick, deep, stout individual.

67 Bull

CAR REMARKABLE 418

21160548

calved - 01/20/24

CAR REMARKABLE 640
CAR REMARKABLE 821
CAR MISS HEATHER 5167#

S A V RESOURCE 1441#
CAR MISS MARIE 769#
CAR CEDAR RIDGE 156
CAR MISS HEATHER 2197
COLE CREEK CEDAR RIDGE 1V#
CAR MISS LUCY 720
CAR PRIMETRACKER 512
CAR MISS MARIE 5128

CAR CEDAR RIDGE 156
CAR MISS MARIE 602
CAR MISS MARIE 8212#



BW	WW 10/8	205 wt	NR	365 wt	YR	ADG	Scrotal
66	756	651	94	1113	98	2.89	40.0
CED	BW	WW	Milk	YW	SC		
+18	-2.1	+41	+30	+76	+2.49		
Marb	RE	Fat	\$M	\$W	\$F	\$G	\$B
+0.35	+0.08	+0.090	+86	+54	+59	+26	+85

Superb cow family. Pathfinder granddam produced CAR New Day 406 that we used heavily in our program for his outstanding daughters. Previous 5 generations of cows averaged 12 calves in their lifetime. Excellent calving ease prospect.

65 Bull

CAR HOMESTRETCH 491

21160503

calved - 01/30/24

B BAR WINDY 79
B BAR HOMESTRETCH 3047
B BAR QUEEN 304#

CROOK MT REALLY WINDY 141#
B BAR LADY JEWEL 116#
SITZ RLS ALLIANCE 7164
B BAR QUEEN 557#
JENNAWAY GAME DAY 024
CAR MISS MARIE 8212#
LAR WINDY 64 4235#
CAR MISS BRENDA 422

CAR GAME DAY 406
CAR MISS BRENDA 8154
CAR MISS BRENDA 826



BW	WW 10/8	205 wt	NR	365 wt	YR	ADG	Scrotal
70	746	656	95	1147	102	3.07	34.3
CED	BW	WW	Milk	YW	SC		
+5	+1.4	+55	+24	+88	+0.30		
Marb	RE	Fat	\$M	\$W	\$F	\$G	\$B
+0.26	+0.21	+0.039	+43	+54	+56	+27	+83

Dam is a model angus cow. Excellent calving ease prospect by Homestretch with a balanced set of numbers.

68 Bull

CAR HOMESTRETCH 4143

21174427

calved - 02/07/24

B BAR WINDY 79
B BAR HOMESTRETCH 3047
B BAR QUEEN 304#

CROOK MT REALLY WINDY 141#
B BAR LADY JEWEL 116#
SITZ RLS ALLIANCE 7164
B BAR QUEEN 557#
K C F BENNETT EFFICIENT
CAR MISS SUSIE 308#
CAR IDEAL 061
C A R DIANA 872

CAR EFFICIENT 534#
CAR MISS DIANA 113#
CAR MISS DIANA 334



BW	WW 10/8	205 wt	NR	365 wt	YR	ADG	Scrotal
74	776	716	114	1210	117	3.09	40.5
CED	BW	WW	Milk	YW	SC		
+4	+1.6	+61	+31	+106	+2.18		
Marb	RE	Fat	\$M	\$W	\$F	\$G	\$B
+0.34	+0.41	+0.032	+62	+59	+108	+34	+142

Dam is a 14yr old pathfinder cow with 12@ 99BW, 12@ 107WR and 7@ 105YR. Dam did an excellent job on this calf when you consider her age on a dry year. A super genetic package on this top calving ease herd bull prospect by Homestretch.



YEARLING BULLS



69

Bull

CAR LEGENDARY 499

21164399 calved - 02/01/24

CONNEALY LEGENDARY 644L#
CAR LEGENDARY 026
CAR MISS LUCY 717#

QUAKER HILL RAMPAGE 0A36#
JAZZED OF CONANGA 4660
S A V RESOURCE 1441#
CAR MISS LUCY 301
BARSTOW CASH#
CAR MISS MIKAYLA 510#
CAR TRACKER 8109
CAR MISS DIANA 971#



BW	WW 10/8	205 wt	NR	365 wt	YR	ADG	Scrotal
62	674	663	103	1154	109	3.07	38.4
CED	BW	WW	Milk	YW	SC		
+8	+0.0	+62	+29	+114	+1.71		
Marb	RE	Fat	\$M	\$W	\$F	\$G	\$B
+0.18	+0.80	+0.056	+40	+62	+81	+29	+110

Out of a 1st calf heifer. Tremendous figures behind this calving ease prospect by Legendary.



70

Bull

CAR LEGENDARY 442

21160512 calved - 01/24/24

CONNEALY LEGENDARY 644L#
CAR LEGENDARY 026
CAR MISS LUCY 717#

QUAKER HILL RAMPAGE 0A36#
JAZZED OF CONANGA 4660
S A V RESOURCE 1441#
CAR MISS LUCY 301
S A V RESOURCE 1441#
CAR MISS MARIE 769#
CAR 865 DUKE 3126
CAR MISS SUSIE 973



BW	WW 10/8	205 wt	NR	365 wt	YR	ADG	Scrotal
68	756	656	95	1056	94	2.50	37.7
CED	BW	WW	Milk	YW	SC		
+18	-2.7	+56	+33	+104	+1.33		
Marb	RE	Fat	\$M	\$W	\$F	\$G	\$B
+0.45	+0.59	+0.029	+51	+64	+71	+41	+113

Top of the breed calving ease credentials on this Legendary son with a good weaning weight.

72

Bull

CAR VERSATILE 431

21160578 calved - 01/22/24

BALDRIDGE VERSATILE
CAR VERSATILE 255
CAR PRIMROSE LADY 091#

BALDRIDGE FORECASTER B160
BALDRIDGE BLACKBIRD A030
LAR WINDY 64 423S#
CAR PRIMROSE LADY 691
SOO LINE MOTIVE 9016#
CAR MISS HEATHER 446#
LAR WINDY 64 423S#
CAR MISS DIANA 4165



BW	WW 10/8	205 wt	NR	365 wt	YR	ADG	Scrotal
75	798	759	110	1092	97	2.08	36.3
CED	BW	WW	Milk	YW	SC		
+7	+1.5	+50	+25	+88	+0.39		
Marb	RE	Fat	\$M	\$W	\$F	\$G	\$B
+0.90	+0.13	+0.057	+46	+50	+47	+55	+102

Granddam is a 16yr old pathfinder still in production. Impressive weaning ratio on this high marbling, calving ease prospect by Versatile.

71

Bull

CAR CHINOOK 4155

21164391 calved - 02/09/24

CAR CHINOOK 786#
CAR CHINOOK 998
CAR MISS MIKAYLA 5207

A A R REALLY WINDY 1205#
CAR MISS MARIE 5109
CAR CEDAR RIDGE 156
CAR MISS MIKAYLA 294
SITZ RAINMAKER 6169#
REDLAND ELBA 1849
N BAR EMULATION EXT#
LADY TRAVELER 449 C A R#



BW	WW 10/8	205 wt	NR	365 wt	YR	ADG	Scrotal
76	730	679	106	1105	105	2.66	39.1
CED	BW	WW	Milk	YW	SC		
+8	+1.2	+42	+34	+80	+1.04		
Marb	RE	Fat	\$M	\$W	\$F	\$G	\$B
+0.55	+0.33	+0.068	+57	+49	+94	+40	+134

Dam is backed by 3 consecutive generations of donor dams, and is a granddaughter of our foundation 449 cow. Dam is a 15yr old pathfinder cow with average ratios of 100BW, 107WR and 105YR. Top of the line genetic package in this calving ease herdbull prospect by Chinook 998 that we think very highly of.





YEARLING BULLS



75 Bull

CAR LEGENDARY 4116

21160517

calved - 02/03/24

CONNEALY LEGENDARY 644L#
CAR LEGENDARY 026
CAR MISS LUCY 717#

QUAKER HILL RAMPAGE 0A36#
JAZZED OF CONANGA 4660
S A V RESOURCE 1441#
CAR MISS LUCY 301

B BAR HOMESTRETCH 3047
CAR MISS JULIE 257
CAR MISS JULIE 8192

B BAR WINDY 79
B BAR QUEEN 304#
CAR GAME DAY 406
CAR MISS JULIE 3214



BW	WW 10/8	205 wt	NR	365 wt	YR	ADG	Scrotal
74	700	690	110	1234	119	3.40	37.0
CED	BW	WW	Milk	YW	SC		
+3	+2.0	+73	+27	+134	+0.97		
Marb	RE	Fat	\$M	\$W	\$F	\$G	\$B
+0.15	+0.91	+0.13	+42	+64	+99	+32	+131

Out of a 1st calf heifer. Impressive indexes on this top calving ease prospect by Legendary.

73 Bull

CAR JUSTIFIED 476

21160492

calved - 01/28/24

KG JUSTIFIED 8007
RA JUSTIFIED 124
RA ERICA LASS 745

KG JUSTIFIED 3023#
KG BEAUTY 6766
SITZ ASSET 402C#
RA ERICA LASS C16#

LAR WINDY 64 423S#
CAR MISS DIANA 912#
CAR LADY DIANA 995

H A R B WINDY 702 JH#
EILEENMERE DIAMOND 161 L A R
R R TRAVELER 5204#
LADY OSCAR 937 C A R#



BW	WW 10/8	205 wt	NR	365 wt	YR	ADG	Scrotal
74	712	646	93	1128	100	3.01	37.2
CED	BW	WW	Milk	YW	SC		
+10	+1.5	+55	+28	+95	+1.48		
Marb	RE	Fat	\$M	\$W	\$F	\$G	\$B
+0.71	+0.71	-0.007	+37	+53	+75	+58	+133

Pathfinder dam produced 14 calves and is the granddaughter of our foundation pathfinder donor cow 937. Time tested genetic package on this front end Justified son with good carcass values.

76 Bull

CAR BRAVO 4173

21160562

calved - 02/13/24

COLEMAN BRAVO 6313#
CAR BRAVO 151
CAR MISS DIANA 598#

COLEMAN CHARLO 0256#
COLEMAN DONNA 714
CAR EFFICIENT 534#
CAR MISS DIANA 3111

BIG DRY RAINFALL H35
CAR MISS MARIE 2129
CAR MISS MARIE 878

S A V RAINFALL 6846
BDAR RUBY 747E
CAR CHINNOOK 786#
CAR MISS MARIE 358#



BW	WW 10/8	205 wt	NR	365 wt	YR	ADG	Scrotal
68	688	692	100	1164	103	2.95	39.8
CED	BW	WW	Milk	YW	SC		
+1	+2.9	+55	+27	+101	+1.77		
Marb	RE	Fat	\$M	\$W	\$F	\$G	\$B
+0.68	+1.07	+0.044	+85	+55	+72	+57	+129

Out of a 1st calf heifer. Excellent carcass traits on this calving ease prospect by Bravo.

74 Bull

CAR COLONEL 434

21160542

calved - 01/22/24

BALDRIDGE COLONEL C251#
BYERGO COLONEL G14
BYERGO CLOVER 850

BALDRIDGE XPAND X743
BALDRIDGE ISABEL Y69
LCC NEW STANDARD#
BYERGO CLOVER 513

CAR HICKORY 547
CAR MISS MARIE 727
CAR MISS MARIE 279

CAR CEDAR RIDGE 156
CAR MISS MARIE 3157
COLE CREEK CEDAR RIDGE 1V#
CAR MISS MARIE 890



BW	WW 10/8	205 wt	NR	365 wt	YR	ADG	Scrotal
70	752	651	94	1136	100	3.03	37.6
CED	BW	WW	Milk	YW	SC		
+7	-0.9	+49	+29	+87	+1.01		
Marb	RE	Fat	\$M	\$W	\$F	\$G	\$B
+0.66	+0.27	+0.018	+54	+53	+81	+48	+129

Good weaning weight on this outcross calving ease prospect by Colonel.

77 Bull

CAR CHINOOK 4107

21160483

calved - 02/01/24

CAR CHINNOOK 786#
CAR CHINOOK 998
CAR MISS MIKAYLA 5207

A A R REALLY WINDY 1205#
CAR MISS MARIE 5109
CAR CEDAR RIDGE 156
CAR MISS MIKAYLA 294

CAR GAME DAY 406
CAR MISS CAROLINE 8149
CAR MISS CAROLINE 459#

JENNAWAY GAME DAY 024
CAR MISS MARIE 8212#
CONNEALY MENTOR 7374#
CAR MISS CAROLINE 511#



BW	WW 10/8	205 wt	NR	365 wt	YR	ADG	Scrotal
72	760	671	97	1044	92	2.33	38.4
CED	BW	WW	Milk	YW	SC		
+12	-0.1	+54	+27	+92	+1.60		
Marb	RE	Fat	\$M	\$W	\$F	\$G	\$B
+0.37	+0.29	+0.032	+72	+62	+73	+34	+107

Two consecutive generations of pathfinder dams behind this calving ease prospect by Chinook with a good weaning weight.



YEARLING BULLS



78

Bull

CAR SWAGGER 4162

21160572 calved - 02/10/24

WINDY RIDGE SWAGGER 714
CAR SWAGGER 1191
CAR MISS JULIE 667

MARDA SWAGGER 463
WINDY RIDGE ROSE 312
CAR RIDGERUNNER 001
CAR MISS JULIE 429#

LAR JUNEANU 796Y
CAR MISS VIKING 7130
CAR MISS VIKING 163#

KOUPAL JUNEANU 797#
QUEEN ELBA 763U LAR
CAR CHINNOOK 786#
CAR MISS VIKING 3119#



BW	WW 10/8	205 wt	NR	365 wt	YR	ADG	Scrotal
88	732	661	96	1090	97	2.68	38.7
CED	BW	WW	Milk	YW	SC		
+0	+5.7	+72	+20	+123	+2.06		
Marb	RE	Fat	\$M	\$W	\$F	\$G	\$B
+0.05	+0.63	-0.13	+69	+50	+76	+26	+102

Two generations of pathfinder dams with dam averaging 113WR and 108YR on their progeny. Excellent growth numbers on this big, stout Rainmaker son.

81

Bull

CAR MENTOR 4134

21160521 calved - 02/05/24

CONNEALY MENTOR 7374#
CAR MENTOR 0100
CAR MISS MARIE 870

G A R RETAIL PRODUCT#
EXECUTA OF CONANGA 939#
CAR BISMARCK 371
CAR MISS MARIE 340#
K C F BENNETT EFFICIENT
CAR MISS SUSIE 308#
CAR 461 TRACKER 6106
CAR MISS MARIE 387

CAR EFFICIENT 534#
CAR MISS MARIE 1144
CAR MISS MARIE 969



BW	WW 10/8	205 wt	NR	365 wt	YR	ADG	Scrotal
74	694	641	100	1148	109	3.17	35.9
CED	BW	WW	Milk	YW	SC		
+8	+1.4	+50	+20	+94	+1.07		
Marb	RE	Fat	\$M	\$W	\$F	\$G	\$B
+0.64	+0.33	+0.23	+49	+43	+66	+48	+114

Dam is 14 and still in production. A rock solid Mentor son from a proven cow family.

79

Bull

CAR BROKEN BOW 430

21170571 calved - 01/22/24

SUMMITCREST COMPLETE 1P55#
KM BROKEN BOW 002#
SUMMITCREST PRINCESS 0P12#

C F RIGHT DESIGN 1802#
SUMMITCREST ELBA 1M17
BASIN AMBUSH 8161
SUMMITCREST PRINCESS 2J10#

HARRISON TRUE GRIT 4253
CAR MISS MARIE 075
CAR MISS MARIE 6126

HILLTOP TRUE GRIT 9202#
HARRISON MISS HILDA 9097
LAR JUNEANU 796Y
CAR MISS MARIE 993#



BW	WW 10/8	205 wt	NR	365 wt	YR	ADG	Scrotal
55	722	691	100	1169	104	2.99	37.3
CED	BW	WW	Milk	YW	SC		
+5	+1.8	+77	+26	+128	+1.57		
Marb	RE	Fat	\$M	\$W	\$F	\$G	\$B
+0.67	+0.67	-0.37	+61	+73	+52	+58	+110

Dam descends from a super easy keeping cow family with average ratios of 104BW, 108WR and 111YR. This bull was a twin. Outcross calving ease genetics.

82

Bull

CAR RAINFALL 4184

627863426 calved - 02/15/24

S A V RAINFALL 6846
BIG DRY RAINFALL H35
BDAR RUBY 747E

COLEMAN CHARLO 0256#
S A V BLACKCAP MAY 4136
SITZ ROYAL 9784
BDAR RUBY 406C

WINDY RIDGE SWAGGER 714
CAR MISS MARIE 178
CAR MISS MARIE 5109

MARDA SWAGGER 463
WINDY RIDGE ROSE 312
CAR CHINNOOK 786#
CAR MISS MARIE 508



BW	WW 10/8	205 wt	NR	365 wt	YR	ADG	Scrotal
76	760	730	113	1237	120	3.17	37.4
CED	BW	WW	Milk	YW	SC		
na	na	na	na	na	na		
Marb	RE	Fat	\$M	\$W	\$F	\$G	\$B
na	na	na	na	na	na	na	na

SELLS UNPAPERED. According to DNA, he is in the top 2% of the breed for weaning weight and yearling weight. Top performing son of Rainfall. High weaning and yearling weight indexes.

80

Bull

CAR CHINOOK 4129

21160495 calved - 02/05/24

CAR CHINNOOK 786#
CAR CHINOOK 998
CAR MISS MIKAYLA 5207

A A R REALLY WINDY 1205#
CAR MISS MARIE 5109
CAR CEDAR RIDGE 156
CAR MISS MIKAYLA 294

CAR DURABULL LINE 575
CAR MISS ROBERTA 820#
CAR MISS ROBERTA 7117

CAR 865 DUKE 3200
CAR MISS MARIE 3184#
CAR PRIMERACKER 511
CAR MISS ROBERTA 403



BW	WW 10/8	205 wt	NR	365 wt	YR	ADG	Scrotal
79	712	635	99	1080	102	2.78	34.5
CED	BW	WW	Milk	YW	SC		
+6	+1.4	+45	+21	+73	+0.85		
Marb	RE	Fat	\$M	\$W	\$F	\$G	\$B
+0.20	+0.18	+0.041	+53	+45	+50	+24	+73

Dam is a pathfinder Durabull daughter from a cow family that produced 904 Tracker line of cattle. Excellent genetic package in this top Chinook son.





YEARLING BULLS



85 Bull

CAR SWAGGER 454

21160496

calved - 01/25/24

MARDA SWAGGER 463
WINDY RIDGE SWAGGER 714
WINDY RIDGE ROSE 312

CONNEALY CONFIDENCE 0100#
MF BLACKBIRD 51
WINDY RIDGE DAYLIGHT 104
WINDY RIDGE ROSE 117

CAR BUSHWACKER 618
CAR MISS MARIE 8121
CAR MISS MARIE 6146

CAR BUSHWACKER 601
CAR MISS BRENDA 422
LAR JUNEANU 796Y
CAR MISS MARIE 7180



BW	WW 10/8	205 wt	NR	365 wt	YR	ADG	Scrotal
70	724	630	91	1115	99	3.03	35.2
CED	BW	WW	Milk	YW	SC		
+10	+0.9	+65	+34	+115	+1.21		
Marb	RE	Fat	\$M	\$W	\$F	\$G	\$B
+0.65	+0.26	+0.051	+69	+67	+78	+45	+123

Excellent outcross calving ease prospect by Swagger with appealing set of numbers.

83 Bull

CAR VERSATILE 439

21160526

calved - 01/24/24

BALDRIDGE VERSATILE
CAR VERSATILE 255
CAR PRIMROSE LADY 091#

BALDRIDGE FORECASTER B160
BALDRIDGE BLACKBIRD A030
LAR WINDY 64 423S#
CAR PRIMROSE LADY 691

CAR DURABULL LINE 575
CAR MISS MIKAYLA 760
CAR MISS MIKAYLA 179#

CAR 865 DUKE 3200
CAR MISS MARIE 3184#
CAR 504 DUKE 898
CAR MISS MIKAYLA 346



BW	WW 10/8	205 wt	NR	365 wt	YR	ADG	Scrotal
74	752	654	95	1099	98	2.78	37.1
CED	BW	WW	Milk	YW	SC		
+10	-0.2	+42	+22	+76	+0.98		
Marb	RE	Fat	\$M	\$W	\$F	\$G	\$B
+0.92	+0.35	+0.054	+63	+44	+50	+59	+109

Granddam is a pathfinder. Dam is one of our favorite Durabull daughters and the mother of Reference sire CAR Yeti 973. This young high marbling bull has been a phenotypical standout. Calving ease prospect that should leave you with an outstanding set of replacement heifers.

86 Bull

CAR SWAGGER 4167

21160531

calved - 02/11/24

WINDY RIDGE SWAGGER 714
CAR SWAGGER 1191
CAR MISS JULIE 667

MARDA SWAGGER 463
WINDY RIDGE ROSE 312
CAR RIDGERUNNER 001
CAR MISS JULIE 429#

CAR INCREDIBULL 496
CAR MISS MARIE 7207#
CAR MISS MARIE 178

CAR INCREDIBULL 080
CAR MISS MARIE 7170
CAR NEW DAY 7162
CAR MISS MARIE 130#



BW	WW 10/8	205 wt	NR	365 wt	YR	ADG	Scrotal
72	740	668	99	1103	97	2.72	36.2
CED	BW	WW	Milk	YW	SC		
+15	-1.6	+52	+31	+85	+1.20		
Marb	RE	Fat	\$M	\$W	\$F	\$G	\$B
+0.62	+0.83	+0.024	+86	+65	+43	+53	+96

Dam is a prolific 8yr old pathfinder cow. Top 1% of the breed for calving ease with excellent carcass and a super cow family behind him.

84 Bull

CAR ARMSTRONG 4141

21167473

calved - 02/06/24

S ARCHITECT 9501
S ARMSTRONG
S QUEEN ESSA 7149#

SYDGEN BLUEPRINT
S BLOSSOM 7514
S FOUNDATION 514#
S QUEEN ESSA 960

CAR JUNEANU 7213
CAR MISS DIANA 2177
CAR MISS DIANA 695

LAR JUNEANU 796Y
CAR MISS JULIE 667
HARRISON TRUE GRIT 4253
CAR MISS DIANA 497



BW	WW 10/8	205 wt	NR	365 wt	YR	ADG	Scrotal
72	696	690	107	1149	108	2.87	37.6
CED	BW	WW	Milk	YW	SC		
+5	+1.9	+79	+25	+125	+2.42		
Marb	RE	Fat	\$M	\$W	\$F	\$G	\$B
+0.38	+0.65	-0.018	+82	+78	+103	+42	+145

Out of a 1st calf heifer. Look at the impressive numbers and indexes on this calving ease herdbull prospect by Armstrong.

87 Bull

CAR REMARKABLE 4158

21164392

calved - 02/09/24

CAR REMARKABLE 821
CAR REMARKABLE 002
CAR MISS WENDY 0148

CAR REMARKABLE 640
CAR MISS HEATHER 5167#
REDLAND RAINMAKER 3856
CAR MISS WENDY 7205

CAR TRUE GRIT 8141
CAR MISS VIKING 0180
CAR MISS VIKING 8123

HARRISON TRUE GRIT 4253
CAR MISS MARIE 582
CAR UNMISTAKABLE 556
CAR MISS VIKING 163#



BW	WW 10/8	205 wt	NR	365 wt	YR	ADG	Scrotal
73	698	643	100	1147	108	3.15	39.8
CED	BW	WW	Milk	YW	SC		
+7	+1.5	+59	+23	+106	+2.24		
Marb	RE	Fat	\$M	\$W	\$F	\$G	\$B
+0.56	+0.64	+0.017	+68	+56	+56	+48	+104

An excellent calving ease prospect by Remarkable with a great set of figures.



YEARLING BULLS



88 Bull

CAR BISMARK 4204

21160559

calved - 02/19/24

CAR BISMARK 8190
CAR BISMARK 0184
CAR MISS VIKING 8148

CAR BISMARK 371
CAR MISS MIKAYLA 530#
HARRISON TRUE GRIT 4253
CAR MISS VIKING 752

PINE COULEE CAPITALIST F339
CAR MISS MIKAYLA 1201
CAR MISS MIKAYLA 9162

LD CAPITALIST 316#
PINE COULEE BLACKCAP Y1#
CAR GAME DAY 406
CAR MISS MIKAYLA 294



BW	WW 10/8	205 wt	NR	365 wt	YR	ADG	Scrotal
76	708	690	110	1237	120	3.42	36.5
CED	BW	WW	Milk	YW	SC		
+7	+1.8	+63	+19	+106	+1.04		
Marb	RE	Fat	\$M	\$W	\$F	\$G	\$B
+0.12	+0.55	-0.05	+63	+55	+93	+28	+121

Excellent young Capitalist dam with 2@ 110WR. Top calving ease prospect by Bismark 0184.

91 Bull

CAR BRAVO 471

21160555

calved - 01/27/24

COLEMAN BRAVO 6313#
CAR BRAVO 151
CAR MISS DIANA 598#

COLEMAN CHARLO 0256#
COLEMAN DONNA 714
CAR EFFICIENT 534#
CAR MISS DIANA 3111

CAR BUSHWACKER 618
CAR MISS MARIE 239
CAR MISS MARIE 544

CAR BUSHWACKER 601
CAR MISS BRENDA 422
CAR TRACKER 321
CAR MISS MARIE 362



BW	WW 10/8	205 wt	NR	365 wt	YR	ADG	Scrotal
65	674	657	102	1145	108	3.05	40.8
CED	BW	WW	Milk	YW	SC		
+10	-1.2	+44	+27	+86	+1.70		
Marb	RE	Fat	\$M	\$W	\$F	\$G	\$B
+0.60	+0.28	+0.04	+71	+47	+72	+47	+119

Out of a 1st calf heifer. Really good indexing Bravo son from a top producing cow family.

89 Bull

CAR VERSATILE 444

21160561

calved - 01/24/24

BALDRIDGE VERSATILE
CAR VERSATILE 255
CAR PRIMROSE LADY 091#

BALDRIDGE FORECASTER B160
BALDRIDGE BLACKBIRD A030
LAR WINDY 64 4235#
CAR PRIMROSE LADY 691

CAR REMARKABLE 640
CAR MISS MARIE 841
CAR MISS MARIE 642#

S A V RESOURCE 1441#
CAR MISS MARIE 769#
CAR TRACKER 201
CAR MISS MARIE 716



BW	WW 10/8	205 wt	NR	365 wt	YR	ADG	Scrotal
70	682	593	86	1071	95	2.99	37.1
CED	BW	WW	Milk	YW	SC		
+15	-1.3	+46	+21	+89	+0.62		
Marb	RE	Fat	\$M	\$W	\$F	\$G	\$B
+0.97	-0.35	+0.074	+43	+38	+63	+52	+115

Granddam is a pathfinder. Sleep all night calving ease with high marbling genetics.

90 Bull

CAR MENTOR 4152

21160567

calved - 02/08/24

CONNELY MENTOR 7374#
CAR MENTOR 0100
CAR MISS MARIE 870

G A R RETAIL PRODUCT#
EXECUTA OF CONANGA 939#
CAR BISMARK 371
CAR MISS MARIE 340#

CAR MOTIVE 423
CAR MISS MARIE 047
CAR MISS MARIE 4180

SOO LINE MOTIVE 9016#
CAR MISS HEATHER 446#
LAR JUNEANU 796Y
CAR MISS MARIE 6134



BW	WW 10/8	205 wt	NR	365 wt	YR	ADG	Scrotal
72	768	703	102	1029	91	2.04	34.8
CED	BW	WW	Milk	YW	SC		
+8	+1.9	+56	+12	+84	-0.01		
Marb	RE	Fat	\$M	\$W	\$F	\$G	\$B
+0.46	+0.23	+0.007	+69	+46	+53	+39	+92

This calving ease prospect by Mentor has a powerful producing cow family behind him.

HOW MUCH MORE CAN A RANCHER AFFORD TO PAY FOR A TOP BULL?

Increase in weaning weight from top performing bull per calf.

X Number of cows covered per year

X Number of years used

X Selling price of calves

= **Extra you can afford to pay for a better bull**

Example: A bull who can add 30 lbs to your weaning weights X 25 cows per year X 4 years of use X \$1.50 per lb = \$4,500

This example shows that this bull is worth \$4500 more than the average bull that keeps your weaning weights the same.

This formula does not take into account the extra value realized through genetics that have been developed to survive and excel in a low input environment. The replacement heifers that have that extra fertility and bred in longevity to give you those extra years of production. The feedlot gain and improved carcass quality that helps you to market your calves. All of these items add to your bottom line and help your outfit to survive and prosper. Put your own figures into this formula and see what you come up with.





YEARLING BULLS



92

Bull

CAR RAINFALL 4146

21164390 calved - 02/07/24

S A V RAINFALL 6846
BIG DRY RAINFALL H35
BDAR RUBY 747E

COLEMAN CHARLO 0256#
S A V BLACKCAP MAY 4136
SITZ ROYAL 9784
BDAR RUBY 406C

BYERGO COLONEL G14
CAR MISS DIANA 181
CAR MISS DIANA 956

BALDRIDGE COLONEL C251#
BYERGO CLOVER 850
REDLAND RAINMAKER 3856
CAR MISS DIANA 579



BW	WW 10/8	205 wt	NR	365 wt	YR	ADG	Scrotal
65	672	638	102	1176	114	3.36	34.1
CED	BW	WW	Milk	YW	SC		
+3	+1.2	+60	+36	+115	+1.50		
Marb	RE	Fat	\$M	\$W	\$F	\$G	\$B
+0.67	+0.29	-0.003	+68	+65	+72	+51	+123

Granddam produced 13 calves in her lifetime. Lots of bred in calving ease in this top Rainfall son.



93

Bull

CAR RAINMAKER 420

21164393 calved - 01/21/24

BASIN RAINMAKER 4404#
S & V RAINMAKER 4044-1191
VA JUSTICE 6078

BASIN RAINMAKER 2704
BASIN JOY 1036
VA JUSTICE 0105-3253
VA JUSTICE 3150

CAR CEDAR RIDGE 156
CAR MISS MARIE 5130
CAR MISS MARIE 2178

COLE CREEK CEDAR RIDGE 1V#
CAR MISS LUCY 720
JENNAWAY GAME DAY 024
CAR MISS MARIE 031#



BW	WW 10/8	205 wt	NR	365 wt	YR	ADG	Scrotal
74	738	638	92	1017	90	2.37	35.1
CED	BW	WW	Milk	YW	SC		
+5	+1.2	+47	+28	+87	+1.75		
Marb	RE	Fat	\$M	\$W	\$F	\$G	\$B
+0.43	+0.58	+0.044	+56	+44	+77	+39	+117

Excellent bred in maternal traits behind this calving ease prospect by Rainmaker.

95

Bull

CAR JUSTIFIED 481

21171153 calved - 01/29/24

KG JUSTIFIED 8007
RA JUSTIFIED 124
RA ERICA LASS 745

KG JUSTIFIED 3023#
KG BEAUTY 6766
SITZ ASSET 402C#
RA ERICA LASS C16#

CAR REMARKABLE 821
CAR MISS MIKAYLA 016
CAR MISS MIKAYLA 0119

CAR REMARKABLE 640
CAR MISS HEATHER 5167#
LAR WINDY 64 423S#
CAR MISS MIKAYLA 346



BW	WW 10/8	205 wt	NR	365 wt	YR	ADG	Scrotal
83	698	630	91	1078	95	2.80	37.5
CED	BW	WW	Milk	YW	SC		
+5	+3.6	+72	+20	+129	+1.51		
Marb	RE	Fat	\$M	\$W	\$F	\$G	\$B
+0.32	+0.58	+0.016	+51	+49	+87	+36	+123

Excellent performance EPD's on this good Justified son from a consistent producing cow family.

94

Bull

CAR RAINFALL 4165

21160529 calved - 02/11/24

S A V RAINFALL 6846
BIG DRY RAINFALL H35
BDAR RUBY 747E

COLEMAN CHARLO 0256#
S A V BLACKCAP MAY 4136
SITZ ROYAL 9784
BDAR RUBY 406C

BALDRIDGE SR GOALKEEPER
CAR MISS MARIE 139
CAR MISS MARIE 8183

SYDGEN ENHANCE#
BALDRIDGE ISABEL E030
LAR JUNEANU 796Y
CAR MISS MARIE 370#



BW	WW 10/8	205 wt	NR	365 wt	YR	ADG	Scrotal
71	684	655	102	1133	107	2.99	38.2
CED	BW	WW	Milk	YW	SC		
+4	+2.4	+70	+27	+127	+1.72		
Marb	RE	Fat	\$M	\$W	\$F	\$G	\$B
+0.85	+0.86	+0.006	+78	+65	+85	+65	+150

This good Rainfall son has our top proven cow family backing him. Excellent carcass traits.

96

Bull

CAR CONSENSUS 4117

21160518 calved - 02/03/24

BARTELS CONSENSUS 3809 649
CAR CONSENSUS 105
CAR MISS VIKING 604

CONNEALY CONSENSUS#
ELISHA OF CONANGA 868 988
CAR CEDAR RIDGE 156
CAR MISS VIKING 829

CAR JUNEANU 7179
CAR MISS MARIE 2225
CAR MISS MARIE 9193

LAR JUNEANU 796Y
CAR MISS MARIE 340#
CAR RESOURCE 610
CAR MISS MARIE 7154#



BW	WW 10/8	205 wt	NR	365 wt	YR	ADG	Scrotal
77	678	671	105	1140	108	2.93	40.5
CED	BW	WW	Milk	YW	SC		
+9	+2.3	+69	+32	+122	+1.87		
Marb	RE	Fat	\$M	\$W	\$F	\$G	\$B
+0.05	+0.78	-0.038	+70	+70	+72	+29	+101

Out of a 1st calf heifer. Our best cow family on this balanced calving ease prospect by Consensus.



YEARLING BULLS



97

Bull

CAR RAINFALL 4132

21163221 calved - 02/05/24

S A V RAINFALL 6846
BIG DRY RAINFALL H35
BDAR RUBY 747E

COLEMAN CHARLO 0256#
S A V BLACKCAP MAY 4136
SITZ ROYAL 9784
BDAR RUBY 406C

O C C MISSING LINK 830M#
CAR MISS MARIE 048
CAR GAME DAY 2217
CAR MISS MARIE 3138



JBOB MISSING LINK 935
CAR MISS MARIE 166
CAR MISS MARIE 5222

BW	WW 10/8	205 wt	NR	365 wt	YR	ADG	Scrotal
66	704	664	96	1046	93	2.39	38.0
CED	BW	WW	Milk	YW	SC		
+11	+0.4	+53	+31	+91	+1.91		
Marb	RE	Fat	\$M	\$W	\$F	\$G	\$B
+0.47	+0.64	-0.002	+72	+62	+62	+45	+107

Outcross calving ease prospect by Rainfall.



98

Bull

CAR RAINMAKER 406

21164386 calved - 01/19/24

BASIN RAINMAKER 4404#
S & V RAINMAKER 4044-1191
VA JUSTICE 6078

BASIN RAINMAKER 2704
BASIN JOY 1036
VA JUSTICE 0105-3253
VA JUSTICE 3150

COLE CREEK CEDAR RIDGE 1V#
CAR MISS LUCY 720
CAR PRIMETRACKER 802
CAR MISS MARIE 9168



CAR CEDAR RIDGE 156
CAR MISS MARIE 370#
CAR MISS MARIE 1152

BW	WW 10/8	205 wt	NR	365 wt	YR	ADG	Scrotal
66	706	630	98	1040	98	2.56	36.2
CED	BW	WW	Milk	YW	SC		
+11	-0.1	+61	+27	+103	+1.27		
Marb	RE	Fat	\$M	\$W	\$F	\$G	\$B
+0.43	+0.59	+0.074	+77	+67	+83	+37	+121

Dam is a 15yr old pathfinder cow still producing. Excellent bred in longevity in this eye appealing calving ease prospect by Rainmaker.

100

Bull

CAR JUSTIFIED 496

21160564 calved - 01/31/24

KG JUSTIFIED 8007
RA JUSTIFIED 124
RA ERICA LASS 745

KG JUSTIFIED 3023#
KG BEAUTY 6766
SITZ ASSET 402C#
RA ERICA LASS C16#

CAR MOTIVE 773
CAR PRIMROSE LADY 1215
CAR PRIMROSE LADY 829

CAR MOTIVE 416
CAR MISS FOREVER 510#
CAR REMARKABLE 640
CAR PRIMROSE LADY 1194



BW	WW 10/8	205 wt	NR	365 wt	YR	ADG	Scrotal
73	678	635	92	1097	97	2.89	37.9
CED	BW	WW	Milk	YW	SC		
+4	+3.0	+69	+19	+117	+1.89		
Marb	RE	Fat	\$M	\$W	\$F	\$G	\$B
-0.05	+0.62	+0.029	+57	+55	+90	+18	+108

Dam has 2@ 103BW, 2@ 106WR and 2@ 111YR. Nice set of figures on this well put together Justified son.

99

Bull

CAR RAINFALL 4176

21160546 calved - 02/14/24

S A V RAINFALL 6846
BIG DRY RAINFALL H35
BDAR RUBY 747E

COLEMAN CHARLO 0256#
S A V BLACKCAP MAY 4136
SITZ ROYAL 9784
BDAR RUBY 406C

SITZ STELLAR 726D#
SITZ MISS BURGESS 1856
CAR INCREDIBULL 080
CAR MISS FOREVER 017#



SITZ RESILIENT 10208
CAR MISS FOREVER 108
CAR MISS FOREVER 510#

BW	WW 10/8	205 wt	NR	365 wt	YR	ADG	Scrotal
64	684	659	97	1110	97	2.82	38.3
CED	BW	WW	Milk	YW	SC		
+11	-0.3	+67	+25	+126	+1.61		
Marb	RE	Fat	\$M	\$W	\$F	\$G	\$B
+0.99	+0.84	+0.043	+70	+67	+67	+69	+136

Two consecutive generations of pathfinders with a 15yr old granddam still going. Impressive carcass and maternal traits on this calving ease herd bull prospect by Rainfall.





YEARLING BULLS



103 Bull

CAR CHA CHING 4135

21171151

calved - 02/05/24

CAR CHA CHING 528
CAR CHA CHING 103
CAR MISS LUCY 717#

BARSTOW CASH#
CAR MISS MIKAYLA 510#
S A V RESOURCE 1441#
CAR MISS LUCY 301
CAR CEDAR RIDGE 156
CAR MISS MARIE 3157
BARTELS CONSENSUS 3809 649
CAR MISS MARIE 7183

CAR HICKORY 547
CAR MISS MARIE 177
CAR MISS MARIE 9198



BW	WW 10/8	205 wt	NR	365 wt	YR	ADG	Scrotal
65	694	655	102	1068	101	2.58	41.0
CED	BW	WW	Milk	YW	SC		
+9	+0.2	+64	+23	+110	+1.45		
Marb	RE	Fat	\$M	\$W	\$F	\$G	\$B
+0.42	+0.71	+0.001	+60	+58	+91	+43	+135

Dam is a young Hickory daughter with 2@ 93BW, 2@ 110WR and 108YR. A top, big scrotaled calving ease herdbull prospect by Cha Ching.

101 Bull

CAR JUSTIFIED 4187

21160581

calved - 02/15/24

KG JUSTIFIED 8007
RA JUSTIFIED 124
RA ERICA LASS 745

KG JUSTIFIED 3023#
KG BEAUTY 6766
SITZ ASSET 402C#
RA ERICA LASS C16#

CAR REMARKABLE 640
CAR MISS CAROLINE 9102
CAR MISS CAROLINE 706#

S A V RESOURCE 1441#
CAR MISS MARIE 769#
CAR DUKE 504
CAR MISS CAROLINE 254



BW	WW 10/8	205 wt	NR	365 wt	YR	ADG	Scrotal
70	728	664	106	1173	114	3.18	34.9
CED	BW	WW	Milk	YW	SC		
+9	-1.1	+54	+30	+93	+1.43		
Marb	RE	Fat	\$M	\$W	\$F	\$G	\$B
+0.10	+0.81	+0.015	+57	+62	+90	+28	+118

Pathfinder granddam produced 12 calves. Good indexes on this calving ease prospect by Justified.

104 Bull

CAR MENTOR 4140

21160568

calved - 02/06/24

CONNELLY MENTOR 7374#
CAR MENTOR 0100
CAR MISS MARIE 870

G A R RETAIL PRODUCT#
EXECUTA OF CONANGA 939#
CAR BISMARK 371
CAR MISS MARIE 340#

CAR CHA CHING 528
CAR MISS DIANA 1104
CAR MISS DIANA 497

BARSTOW CASH#
CAR MISS MIKAYLA 510#
CAR INCREDIBULL 080
CAR MISS DIANA 6149#



BW	WW 10/8	205 wt	NR	365 wt	YR	ADG	Scrotal
76	708	670	97	1062	94	2.45	40.1
CED	BW	WW	Milk	YW	SC		
+7	+2.5	+63	+12	+110	+1.81		
Marb	RE	Fat	\$M	\$W	\$F	\$G	\$B
+0.27	+0.41	-0.019	+50	+41	+66	+34	+101

Balanced set of numbers and good weaning on this Mentor son.

102 Bull

CAR RARE FIND 460

21160509

calved - 01/26/24

JACS RARE FIND 6503
CAR RARE FIND 0153
CAR MISS VIKING 7130

BASIN PAYWEIGHT 1682#
CRAZY K BLACKCAP 4297
LAR JUNEANU 796Y
CAR MISS VIKING 163#

CAR REMARKABLE 640
CAR MISS DIANA 051
CAR MISS DIANA 103#

S A V RESOURCE 1441#
CAR MISS MARIE 769#
A A R TEN X 7008 S A#
CAR MISS DIANA 575



BW	WW 10/8	205 wt	NR	365 wt	YR	ADG	Scrotal
78	718	643	103	1094	106	2.82	33.4
CED	BW	WW	Milk	YW	SC		
+0	+4.5	+69	+16	+126	+1.06		
Marb	RE	Fat	\$M	\$W	\$F	\$G	\$B
+0.55	+0.26	+0.011	+52	+46	+91	+44	+134

Pathfinder granddam is 14 and still in production. Top Rare Find son from a powerful producing cow family with lots of bred in longevity.

105 Bull

CAR BUTKUS 4211

21163222

calved - 02/22/24

GDAR BUTKUS 5217
CAR BUTKUS 1156
CAR MISS MARIE 5105#

SANDPOINT BUTKUS X797#
GDAR PAMELA EVER 2115#
R B ACTIVE DUTY 010#
CAR MISS MARIE 319

CAR 504 DUKE 898
CAR MISS DIANA 817
CAR MISS DIANA 941#

CAR DUKE 504
CAR MISS DIANA 6165#
CAR RIDGERUNNER 660
C A R DIANA 842#



BW	WW 10/8	205 wt	NR	365 wt	YR	ADG	Scrotal
70	702	652	104	1164	113	3.20	36.1
CED	BW	WW	Milk	YW	SC		
+6	+1.4	+75	+30	+131	+0.84		
Marb	RE	Fat	\$M	\$W	\$F	\$G	\$B
+0.69	+0.65	+0.025	+60	+74	+87	+54	+140

Three consecutive generations of pathfinder cows producing 12 plus calves in thier lifetime. One of our very best cow families behind this very complete calving ease herdbull prospect by Butkus.



YEARLING BULLS



106 Bull

CAR CHA CHING 4100

21163453

calved - 02/01/24

CAR CHA CHING 528
CAR CHA CHING 103
CAR MISS LUCY 717#

BARSTOW CASH#
CAR MISS MIKAYLA 510#
S A V RESOURCE 1441#
CAR MISS LUCY 301

CAR DURABULL LINE 575
CAR MISS DIANA 2192
CAR MISS DIANA 2120#

CAR 865 DUKE 3200
CAR MISS MARIE 3184#
CAR RIDGERUNNER 867
CAR MISS DIANA 0101#



BW	WW 10/8	205 wt	NR	365 wt	YR	ADG	Scrotal
74	684	673	105	1108	105	2.72	34.4
CED	BW	WW	Milk	YW	SC		
+6	+2.6	+63	+22	+119	+1.15		
Marb	RE	Fat	\$M	\$W	\$F	\$G	\$B
+0.51	+0.43	+0.10	+52	+49	+97	+44	+141

Out of a 1st calf heifer. Five generations of long term producing pathfinder cows behind this top Cha Ching son.

108 Bull

CAR RARE FIND 451

21160494

calved - 01/25/24

JACS RARE FIND 6503
CAR RARE FIND 0153
CAR MISS VIKING 7130

BASIN PAYWEIGHT 1682#
CRAZY K BLACKCAP 4297
LAR JUNEANU 796Y
CAR MISS VIKING 163#

S A V BISMARCK 5682#
CAR MISS PRIMROSE 3125
CAR MISS PRIMROSE 865

G A R GRID MAKER#
S A V ABIGALE 0451
CAR TRACKER 904#
CAR MISS PRIMROSE 023#



BW	WW 10/8	205 wt	NR	365 wt	YR	ADG	Scrotal
70	716	646	103	1097	106	2.82	38.4
CED	BW	WW	Milk	YW	SC		
+6	+3.4	+60	+22	+96	+1.15		
Marb	RE	Fat	\$M	\$W	\$F	\$G	\$B
+0.53	-.09	+0.52	+78	+54	+64	+36	+99

Dam has 9@ 95BW, 9@ 105WR and 6@101YR. This top Rare Find son should sire a top set of replacement heifers.



109 Bull

CAR SWAGGER 4170

21174428

calved - 02/12/24

WINDY RIDGE SWAGGER 714
CAR SWAGGER 1191
CAR MISS JULIE 667

MARDA SWAGGER 463
WINDY RIDGE ROSE 312
CAR RIDGERUNNER 001
CAR MISS JULIE 429#

SOO LINE MOTIVE 9016#
CAR MISS JULIE 419#
CAR MISS JULIE 7111

HF KODIAK 5R
TLA BEAUTY 5R
CAR TRACKER 565
CAR JULIE 041



BW	WW 10/8	205 wt	NR	365 wt	YR	ADG	Scrotal
76	752	703	112	1106	107	2.52	35.3
CED	BW	WW	Milk	YW	SC		
+6	+1.0	+45	+23	+79	+0.22		
Marb	RE	Fat	\$M	\$W	\$F	\$G	\$B
+0.13	+0.76	+0.22	+65	+42	+78	+29	+106

Dam is an 11yr old pathfinder cow. Tremendous calving ease prospect by Rainmaker with impressive data.

107 Bull

CAR MISSING LINK 4103

21164388

calved - 02/01/24

O C C MISSING LINK 830M#
JOB MISSING LINK 935
CAR MISS MARIE 048

O C C HEADLINER 661H
O C C DIXIE ERICA 946K
CAR CHINNOOK 786#
CAR MISS MARIE 7170

JACS RARE FIND 6503
CAR MISS CAROLINE 0107
CAR MISS CAROLINE 699

BASIN PAYWEIGHT 1682#
CRAZY K BLACKCAP 4297
LAR JUNEANU 796Y
CAR MISS CAROLINE 233



BW	WW 10/8	205 wt	NR	365 wt	YR	ADG	Scrotal
68	732	661	96	1031	91	2.31	37.1
CED	BW	WW	Milk	YW	SC		
+8	+1.0	+60	+27	+102	+0.91		
Marb	RE	Fat	\$M	\$W	\$F	\$G	\$B
+0.41	+0.35	+0.040	+64	+65	+78	+36	+114

Lots of long term bred in longevity in this eye catching calving ease prospect by Missing Link with a balanced set of numbers.

110 Bull

CAR LEGENDARY 415

21171152

calved - 01/20/24

CONNEALY LEGENDARY 644L#
CAR LEGENDARY 026
CAR MISS LUCY 717#

QUAKER HILL RAMPAGE 0A36#
JAZZED OF CONANGA 4660
S A V RESOURCE 1441#
CAR MISS LUCY 301

HARRISON TRUE GRIT 4253
CAR MISS JULIE 9202
CAR MISS JULIE 3214

HILLTOP TRUE GRIT 9202#
HARRISON MISS HILDA 9097
CAR STEWARD 076
CAR MISS JULIE 2100



BW	WW 10/8	205 wt	NR	365 wt	YR	ADG	Scrotal
66	642	555	86	1024	97	2.93	37.0
CED	BW	WW	Milk	YW	SC		
+15	-1.9	+47	+25	+91	+2.02		
Marb	RE	Fat	\$M	\$W	\$F	\$G	\$B
+0.43	+0.66	+0.001	+50	+47	+70	+43	+113

Excellent calving ease prospect by Legendary with a balanced set of EPD's and backed by a productive cow family.



YEARLING BULLS



111

Bull

CAR MENTOR 4201

21160557

calved - 02/19/24

CONNEALY MENTOR 7374#
CAR MENTOR 0115
CAR MISS TARESA 815

G A R RETAIL PRODUCT#
EXECUTA OF CONANGA 939#
CAR REMARKABLE 640
CAR MISS TARESA 2224

CAR TEN X 107
CAR MISS CATHERINE 767
CAR MISS CATHERINE 504

A A R TEN X 7008 S A#
CAR MISS AMY 121#
CAR SUPER X 223
CAR MISS CATHERINE 286



BW	WW 10/8	205 wt	NR	365 wt	YR	ADG	Scrotal
71	704	649	104	1121	109	2.95	38.5
CED	BW	WW	Milk	YW	SC		
+10	+1.3	+45	+20	+76	+1.21		
Marb	RE	Fat	\$M	\$W	\$F	\$G	\$B
+0.94	+0.25	+0.045	+65	+45	+64	+60	+124

Excellent carcass traits on this high marbling son of Mentor.

113

Bull

CAR YEHTI 457

21160522

calved - 01/25/24

PAHR YETI B5#
CAR YEHTI 973
CAR MISS MIKAYLA 760

BASIN PAYWEIGHT 1682#
PAHR RITA Q28 OF 0151 9Q20
CAR DURABULL LINE 575
CAR MISS MIKAYLA 179#

GDAR BUTKUS 5217
CAR MISS MARIE 199
CAR MISS MARIE 7179

SANDPOINT BUTKUS X797#
GDAR PAMELA EVER 2115#
CAR BISMARK 371
CAR MISS MARIE 012



BW	WW 10/8	205 wt	NR	365 wt	YR	ADG	Scrotal
66	676	626	98	1032	98	2.54	35.2
CED	BW	WW	Milk	YW	SC		
+13	-0.4	+47	+24	+82	+0.55		
Marb	RE	Fat	\$M	\$W	\$F	\$G	\$B
+0.04	+0.41	-0.006	+60	+46	+52	+22	+75

Excellent calving ease prospect by Yeti.

112

Bull

CAR BUTKUS 4137

21160506

calved - 02/05/24

GDAR BUTKUS 5217
CAR BUTKUS 1156
CAR MISS MARIE 5105#

SANDPOINT BUTKUS X797#
GDAR PAMELA EVER 2115#
R B ACTIVE DUTY 010#
CAR MISS MARIE 319

HARRISON TRUE GRIT 4253
CAR MISS MARIE 0210
CAR MISS MARIE 7226

HILLTOP TRUE GRIT 9202#
HARRISON MISS HILDA 9097
CAR INCREDIBULL 496
CAR MISS MARIE 318



BW	WW 10/8	205 wt	NR	365 wt	YR	ADG	Scrotal
72	734	669	107	1109	108	2.75	34.7
CED	BW	WW	Milk	YW	SC		
+8	+1.5	+54	+26	+102	+1.20		
Marb	RE	Fat	\$M	\$W	\$F	\$G	\$B
+0.47	+0.69	+0.036	+79	+55	+74	+43	+117

A calving ease Butkus son that indexed really well on weaning and yearling.

114

Bull

CAR MISSING LINK 4177

21174429

calved - 02/14/24

JBOB MISSING LINK 935
CAR MISSING LINK 1256
CAR MISS HEATHER 907

O C C MISSING LINK 830M#
CAR MISS MARIE 048
CAR HICKORY 547
CAR MISS HEATHER 2169

CAR BUSHWACKER 971 MJC
CAR MISS JULIE 4206
CAR MISS JULIE 667

CAR BUSHWACKER 601
CAR LADY MARIE 648
CAR RIDGERUNNER 001
CAR MISS JULIE 429#



BW	WW 10/8	205 wt	NR	365 wt	YR	ADG	Scrotal
73	722	679	108	1117	108	2.74	39.9
CED	BW	WW	Milk	YW	SC		
+4	+2.9	+56	+31	+94	+2.00		
Marb	RE	Fat	\$M	\$W	\$F	\$G	\$B
+0.24	+0.51	+0.003	+64	+54	+62	+32	+94

Dam is an 11yr old. Granddam produced 14 calves. Rock solid genetics in this genetic package by Missing Link.



YEARLING BULLS



115

Bull

CAR LEGENDARY 4114

21160501

calved - 02/02/24

CONNEALY LEGENDARY 644L#
CAR LEGENDARY 026
CAR MISS LUCY 717#

QUAKER HILL RAMPAGE 0A36#
JAZZED OF CONANGA 4660
S A V RESOURCE 1441#
CAR MISS LUCY 301

WINDY RIDGE SWAGGER 714
CAR MISS JULIE 264
CAR MISS JULIE 419#

MARDA SWAGGER 463
WINDY RIDGE ROSE 312
SOO LINE MOTIVE 9016#
CAR MISS JULIE 7111



BW	WW 10/8	205 wt	NR	365 wt	YR	ADG	Scrotal
70	686	676	105	1052	99	2.35	35.4
CED	BW	WW	Milk	YW	SC		
+6	+2.3	+73	+16	+131	+1.27		
Marb	RE	Fat	\$M	\$W	\$F	\$G	\$B
+0.19	+0.73	-0.005	+11	+48	+95	+33	+128

Out of a 1st calf heifer. Good weaning index on this top calving ease prospect by Legendary.

118

Bull

CAR PACIFIC 4106

21164701

calved - 02/01/24

STERLING PACIFIC 904
CAR PACIFIC 258
CAR MISS AMY 686

HOOVER NO DOUBT
BALDRIDGE ISABEL B082
CAR GAME DAY 406
CAR MISS AMY 8113

CAR REMARKABLE 039
CAR MISS LUCY 2143
CAR MISS LUCY 717#

CAR REMARKABLE 640
CAR MISS MIKAYLA 510#
S A V RESOURCE 1441#
CAR MISS LUCY 301



BW	WW 10/8	205 wt	NR	365 wt	YR	ADG	Scrotal
72	686	675	108	1088	105	2.58	32.9
CED	BW	WW	Milk	YW	SC		
+6	+2.2	+66	+21	+120	+0.43		
Marb	RE	Fat	\$M	\$W	\$F	\$G	\$B
+0.23	+0.83	+0.009	+52	+53	+76	+35	+111

Out of a 1st calf heifer. Pathfinder granddam is the mother to reference sires CAR Legendary 026 and CAR Cha Ching 103.

116

Bull

CAR MISSING LINK 4168

21160532

calved - 02/12/24

O C C MISSING LINK 830M#
JB0B MISSING LINK 935
CAR MISS MARIE 048

O C C HEADLINER 661H
O C C DIXIE ERICA 946K
CAR CHINNOOK 786#
CAR MISS MARIE 7170

CAR JUNEAU 7179
CAR PRIMROSE LADY 1156
CAR PRIMROSE LADY 091#

LAR JUNEANU 796Y
CAR MISS MARIE 340#
LAR WINDY 64 4235#
CAR PRIMROSE LADY 691



BW	WW 10/8	205 wt	NR	365 wt	YR	ADG	Scrotal
80	696	668	104	1063	101	2.47	36.3
CED	BW	WW	Milk	YW	SC		
+2	+2.8	+57	+29	+108	+1.44		
Marb	RE	Fat	\$M	\$W	\$F	\$G	\$B
-0.01	+0.70	-0.009	+42	+52	+79	+23	+102

Dam is a 15yr old pathfinder still rolling with 13 calves @111WR. This top Missing Link son will add pounds and longevity to your program.

119

Bull

CAR SWAGGER 4219

21164702

calved - 02/25/24

WINDY RIDGE SWAGGER 714
CAR SWAGGER 218
CAR MISS MARIE 7179

MARDA SWAGGER 463
WINDY RIDGE ROSE 312
CAR BISMARK 371
CAR MISS MARIE 012

CAR REMARKABLE 039
CAR MISS ZARA 2213
CAR MISS ZARA 6246

CAR REMARKABLE 640
CAR MISS MIKAYLA 510#
CAR INCREDIBULL 390
CAR MISS ZARA 543#



BW	WW 10/8	205 wt	NR	365 wt	YR	ADG	Scrotal
74	670	696	107	1203	114	3.17	34.9
CED	BW	WW	Milk	YW	SC		
+1	+3.7	+73	+25	+126	+1.44		
Marb	RE	Fat	\$M	\$W	\$F	\$G	\$B
+0.42	+0.33	+0.007	+47	+55	+85	+38	+124

Out of a 1st calf heifer.

117

Bull

CAR CONSENSUS 4190

21163554

calved - 02/16/24

BARTELS CONSENSUS 3809 649
CAR CONSENSUS 105
CAR MISS VIKING 604

CONNEALY CONSENSUS#
ELISHA OF CONANGA 868 988
CAR CEDAR RIDGE 156
CAR MISS VIKING 829

CAR DURABULL 054
CAR MISS MARIE 2228
CAR MISS MARIE 972

CAR DURABULL LINE 575
CAR MISS CAROLINE 953
CAR MOTIVE 416
CAR MISS MARIE 1140#



BW	WW 10/8	205 wt	NR	365 wt	YR	ADG	Scrotal
67	620	635	101	1195	115	3.50	34.9
CED	BW	WW	Milk	YW	SC		
+7	+0.8	+56	+21	+103	+1.47		
Marb	RE	Fat	\$M	\$W	\$F	\$G	\$B
+0.10	+0.10	+0.016	+72	+51	+63	+20	+83

Out of a 1st calf heifer. Excellent calving ease prospect by Consensus out of a really nice young Durabull daughter.



Our breeding philosophy has always been centered around producing problem free females with excellent longevity that can survive and excel in a commercial cowmen's environment.



YEARLING BULLS



122 Bull

CAR VERSATILE 4226

21160541

calved - 02/25/24

BALDRIDGE VERSATILE
CAR VERSATILE 255
CAR PRIMROSE LADY 091#

BALDRIDGE FORECASTER B160
BALDRIDGE BLACKBIRD A030
LAR WINDY 64 423S#
CAR PRIMROSE LADY 691

WINDY RIDGE SWAGGER 714
CAR MISS TARESA 236
CAR MISS TARESA 654#

MARDA SWAGGER 463
WINDY RIDGE ROSE 312
PRAIRIE PRIDE NEXT STEP 2036#
CAR MISS TARESA 137#



BW	WW 10/8	205 wt	NR	365 wt	YR	ADG	Scrotal
70	688	712	114	1141	111	2.68	36.2
CED	BW	WW	Milk	YW	SC		
+3	+3.3	+68	+23	+113	+1.06		
Marb	RE	Fat	\$M	\$W	\$F	\$G	\$B
+0.53	+0.28	+0.14	+45	+57	+71	+43	+114

Out of a 1st calf heifer. Five consecutive generations of pathfinder cows behind this top Versatile son.

120 Bull

CAR ARMSTRONG 493

21168619

calved - 01/30/24

S ARCHITECT 9501
S ARMSTRONG
S QUEEN ESSA 7149#

SYDGEN BLUEPRINT
S BLOSSOM 7514
S FOUNDATION 514#
S QUEEN ESSA 960

CAR REMARKABLE 039
CAR MISS DONNA 2212
CAR MISS DONNA 923

CAR REMARKABLE 640
CAR MISS MIKAYLA 510#
CAR TRACKER 904#
C A R MISS DONNA 781



BW	WW 10/8	205 wt	NR	365 wt	YR	ADG	Scrotal
64	646	636	102	1121	109	3.03	35.9
CED	BW	WW	Milk	YW	SC		
+6	+1.9	+65	+20	+110	+1.07		
Marb	RE	Fat	\$M	\$W	\$F	\$G	\$B
+0.51	+0.49	+0.27	+70	+56	+95	+43	+138

Out of a 1st calf heifer. New outcross calving ease genetics.

123 Bull

CAR MENTOR 4131

627863396

calved - 02/05/24

CONNELLY MENTOR 7374#
CAR MENTOR 0100
CAR MISS MARIE 870

G A R RETAIL PRODUCT#
EXECUTA OF CONANGA 939#
CAR BISMARCK 371
CAR MISS MARIE 340#

CAR REMARKABLE 640
CAR MISS DIANA 2126
CAR MISS DIANA 9207

S A V RESOURCE 1441#
CAR MISS MARIE 769#
GDAR BUTKUS 5217
CAR MISS DIANA 2223



BW	WW 10/8	205 wt	NR	365 wt	YR	ADG	Scrotal
72	700	692	108	1108	105	2.60	38.8
CED	BW	WW	Milk	YW	SC		
na	na	na	na	na	na		
Marb	RE	Fat	\$M	\$W	\$F	\$G	\$B
na	na	na	na	na	na	na	na

HE SELLS UNPAPERED. Excellent high indexing calving ease prospect by Mentor.

121 Bull

CAR SWAGGER 4183

21160580

calved - 02/15/24

WINDY RIDGE SWAGGER 714
CAR SWAGGER 1191
CAR MISS JULIE 667

MARDA SWAGGER 463
WINDY RIDGE ROSE 312
CAR RIDGERUNNER 001
CAR MISS JULIE 429#

DIAMOND CAPITALIST B011
CAR MISS CATHERINE 8230
CAR MISS CATHERINE 3127

CONNELLY CAPITALIST 028#
DIAMOND BLACK LADY 7206#
A A R TEN X 7008 S A#
CAR MISS CATHERINE 193



BW	WW 10/8	205 wt	NR	365 wt	YR	ADG	Scrotal
74	760	693	111	1043	101	2.19	37.8
CED	BW	WW	Milk	YW	SC		
+13	+0.5	+51	+21	+85	+1.09		
Marb	RE	Fat	\$M	\$W	\$F	\$G	\$B
+0.84	+0.74	-0.23	+82	+49	+65	+66	+131

Top of the breed calving ease and excellent carcass traits on this good Swagger son.

124 Bull

CAR YETI 4194

21160539

calved - 02/17/24

PAHR YETI B5#
CAR YETI 973
CAR MISS MIKAYLA 760

BASIN PAYWEIGHT 1682#
PAHR RITA Q28 OF 0151 9Q20
CAR DURABULL LINE 575
CAR MISS MIKAYLA 179#

PINE COULEE CAPITALIST F339
CAR MISS MIKAYLA 1223
CAR MISS MIKAYLA 927

LD CAPITALIST 316#
PINE COULEE BLACKCAP Y1#
CAR JUNEAU 3236
CAR MISS MIKAYLA 863



BW	WW 10/8	205 wt	NR	365 wt	YR	ADG	Scrotal
66	720	697	111	1110	107	2.58	37.4
CED	BW	WW	Milk	YW	SC		
+10	+0.3	+61	+23	+100	+1.13		
Marb	RE	Fat	\$M	\$W	\$F	\$G	\$B
+0.47	+0.53	+0.36	+62	+60	+72	+41	+113

Exciting calving ease prospect from a top producing young Capitalist daughter.



YEARLING BULLS



125

Bull

CAR CONSENSUS 4124

21163218

calved - 02/04/24

BARTELS CONSENSUS 3809 649
CAR CONSENSUS 105
CAR MISS VIKING 604

CONNEALY CONSENSUS#
ELISHA OF CONANGA 868 988
CAR CEDAR RIDGE 156
CAR MISS VIKING 829

WINDY RIDGE SWAGGER 714
CAR MISS MARIE 260
CAR MISS MARIE 2122

MARDA SWAGGER 463
WINDY RIDGE ROSE 312
LAR WINDY 64 4235#
CAR MISS MARIE 197



BW	WW 10/8	205 wt	NR	365 wt	YR	ADG	Scrotal
78	650	648	101	1067	101	2.62	34.5
CED	BW	WW	Milk	YW	SC		
+3	+2.5	+62	+25	+104	+0.91		
Marb	RE	Fat	\$M	\$W	\$F	\$G	\$B
+0.26	+0.23	+0.053	+77	+59	+63	+26	+89

Out of a 1st calf heifer. Outcross genetics in this top Consensus bred son.

128

Bull

CAR YETI 4208

21160551

calved - 02/21/24

PAHR YETI B5#
CAR YETI 973
CAR MISS MIKAYLA 760

BASIN PAYWEIGHT 1682#
PAHR RITA Q28 OF 0151 9Q20
CAR DURABULL LINE 575
CAR MISS MIKAYLA 179#

WINDY RIDGE SWAGGER 714
CAR MISS TARESA 1153
CAR MISS TARESA 852

MARDA SWAGGER 463
WINDY RIDGE ROSE 312
CAR UNMISTAKABLE 556
CAR MISS TARESA 1177



BW	WW 10/8	205 wt	NR	365 wt	YR	ADG	Scrotal
82	700	686	110	1208	117	3.26	35.6
CED	BW	WW	Milk	YW	SC		
+5	+3.1	+61	+20	+113	+0.52		
Marb	RE	Fat	\$M	\$W	\$F	\$G	\$B
+0.42	+0.37	+0.012	+44	+43	+83	+39	+122

Fantastic young Swagger dam has 2@ 117WR. Lots of bred in performance in this top prospect by Yeti.

126

Bull

CAR MISSING LINK 4127

21174426

calved - 02/05/24

O C C MISSING LINK 830M#
JBOb MISSING LINK 935
CAR MISS MARIE 048

O C C HEADLINER 661H
O C C DIXIE ERICA 946K
CAR CHINNOOK 786#
CAR MISS MARIE 7170

CAR DURABULL LINE 575
CAR MISS MARIE 029
CAR MISS MARIE 229

CAR 865 DUKE 3200
CAR MISS MARIE 3184#
CAR HERO 9143
CAR MISS MARIE 0158



BW	WW 10/8	205 wt	NR	365 wt	YR	ADG	Scrotal
72	742	676	108	1046	101	2.31	34.7
CED	BW	WW	Milk	YW	SC		
+6	+1.5	+53	+26	+85	+0.96		
Marb	RE	Fat	\$M	\$W	\$F	\$G	\$B
+0.02	+0.65	+0.003	+67	+53	+73	+23	+97

Top weaning index on this good Missing Link son. Calving ease deluxe.

129

Bull

CAR TRUE GRIT 4171

21160544

calved - 02/13/24

HARRISON TRUE GRIT 4253
CAR TRUE GRIT 1215
CAR MISS DIANA 7210

HILLTOP TRUE GRIT 9202#
HARRISON MISS HILDA 9097
D J V EXCITEMENT 591
CAR MISS DIANA 4148

SITZ RESILIENT 10208
CAR MISS CATHERINE 203
CAR MISS CATHERINE 532

SITZ STELLAR 726D#
SITZ MISS BURGESS 1856
R B ACTIVE DUTY 010#
CAR MISS CATHERINE 504



BW	WW 10/8	205 wt	NR	365 wt	YR	ADG	Scrotal
62	668	674	108	1066	103	2.45	37.8
CED	BW	WW	Milk	YW	SC		
+7	+2.4	+79	+18	+126	+1.36		
Marb	RE	Fat	\$M	\$W	\$F	\$G	\$B
+0.34	+0.44	-0.049	+71	+69	+60	+40	+100

Out of a 1st calf heifer. Tremendous numbers on this calving ease herd bull prospect by True Grit.

127

Bull

CAR PACIFIC 4126

21163219

calved - 02/05/24

STERLING PACIFIC 904
CAR PACIFIC 258
CAR MISS AMY 686

HOOVER NO DOUBT
BALDRIDGE ISABEL B082
CAR GAME DAY 406
CAR MISS AMY 8113

BYERGO COLONEL G14
CAR MISS CATHERINE 250
CAR MISS CATHERINE 767

BALDRIDGE COLONEL C251#
BYERGO CLOVER 850
CAR TEN X 107
CAR MISS CATHERINE 504



BW	WW 10/8	205 wt	NR	365 wt	YR	ADG	Scrotal
83	656	655	102	1071	101	2.60	37.5
CED	BW	WW	Milk	YW	SC		
+0	+2.2	+68	+20	+111	+1.03		
Marb	RE	Fat	\$M	\$W	\$F	\$G	\$B
+0.28	+0.42	+0.002	+73	+61	+82	+33	+115

Out of a 1st calf heifer. Tremendous index on this good Pacific son.

130

Bull

CAR REMARKABLE 4212

21163223

calved - 02/22/24

CAR REMARKABLE 821
CAR REMARKABLE 002
CAR MISS WENDY 0148

CAR REMARKABLE 640
CAR MISS HEATHER 5167#
REDLAND RAINMAKER 3856
CAR MISS WENDY 7205

HARRISON TRUE GRIT 4253
CAR MISS PATTY 9195
CAR MISS PATTY 629

HILLTOP TRUE GRIT 9202#
HARRISON MISS HILDA 9097
CAR MOTIVE 423
CAR PATTY 537#



BW	WW 10/8	205 wt	NR	365 wt	YR	ADG	Scrotal
78	704	655	105	1090	106	2.72	37.1
CED	BW	WW	Milk	YW	SC		
+4	+3.2	+73	+14	+122	+2.14		
Marb	RE	Fat	\$M	\$W	\$F	\$G	\$B
+0.43	+0.42	-0.013	+45	+50	+66	+41	+108

Good numbers on this top young Remarkable 002 son from a cow family with lots of pathfinders and bred in longevity.



YEARLING BULLS



131

Bull

CAR BISMARCK 4161

21168389

calved - 02/10/24

CAR BISMARCK 371
CAR BISMARCK 8190
CAR MISS MIKAYLA 530#

S A V BISMARCK 5682#
CAR MISS VIKING 9191
R B ACTIVE DUTY 010#
CAR MISS MIKAYLA 179#

CAR INCREDIBULL 820
CAR MISS MARIE 031#
CAR MISS MARIE 483

LAR WINDY 64 4235#
CAR MARIE 239
CAR TRACKER 904#
CAR MISS MARIE 289



BW	WW 10/8	205 wt	NR	365 wt	YR	ADG	Scrotal
72	656	614	98	1067	103	2.83	34.6
CED	BW	WW	Milk	YW	SC		
+8	+1.0	+43	+22	+67	+1.00		
Marb	RE	Fat	\$M	\$W	\$F	\$G	\$B
+0.31	+0.39	+0.035	+78	+48	+37	+32	+69

Dam is a 15yr old pathfinder still in production. Lots of bred in long term longevity in this top calving ease prospect by Bismark.

133

Bull

CAR RAINMAKER 400

21160488

calved - 01/15/24

BASIN RAINMAKER 4404#
S & V RAINMAKER 4044-1191
VA JUSTICE 6078

BASIN RAINMAKER 2704
BASIN JOY 1036
VA JUSTICE 0105-3253
VA JUSTICE 3150

BARTELS CONSENSUS 3809 649
CAR MISS MARIE 837
CAR MISS MARIE 424

CONNELLY CONSENSUS#
ELISHA OF CONANGA 868 988
SITZ FINAL STATEMENT 618X#
CAR MISS MARIE 358#



BW	WW 10/8	205 wt	NR	365 wt	YR	ADG	Scrotal
65	716	680	109	1027	100	2.17	33.8
CED	BW	WW	Milk	YW	SC		
+7	+2.0	+58	+23	+85	+1.22		
Marb	RE	Fat	\$M	\$W	\$F	\$G	\$B
+0.26	+0.54	-0.008	+84	+58	+52	+34	+86

Dam has 4@ 91BW, 4@ 99WR & 2@ 103YR. Can be used on heifer matings.

132

Bull

CAR BRAVO 4215

21175135

calved - 02/20/24

COLEMAN BRAVO 6313#
CAR BRAVO 151
CAR MISS DIANA 598#

COLEMAN CHARLO 0256#
COLEMAN DONNA 714
CAR EFFICIENT 534#
CAR MISS DIANA 3111

BALDRIDGE SR GOALKEEPER
CAR MISS MARIE 2125
CAR MISS MARIE 024

SYDGEN ENHANCE#
BALDRIDGE ISABEL E030
CAR REMARKABLE 821
CAR MISS MARIE 528



BW	WW 10/8	205 wt	NR	365 wt	YR	ADG	Scrotal
69	650	669	107	1125	109	2.85	38.0
CED	BW	WW	Milk	YW	SC		
+9	+1.2	+57	+33	+110	+1.63		
Marb	RE	Fat	\$M	\$W	\$F	\$G	\$B
+0.43	+0.82	+0.017	+86	+64	+90	+44	+134

Out of a 1st calf heifer. Excellent calving ease prospect by Bravo.

134

Bull

CAR TRUE GRIT 4133

21160520

calved - 02/05/24

HARRISON TRUE GRIT 4253
CAR TRUE GRIT 1215
CAR MISS DIANA 7210

HILLTOP TRUE GRIT 9202#
HARRISON MISS HILDA 9097
D J V EXCITEMENT 591
CAR MISS DIANA 4148

CAR DURABULL LINE 575
CAR MISS MARIE 291
CAR MISS MARIE 770

CAR 865 DUKE 3200
CAR MISS MARIE 3184#
CAR PRIMETRACKER 308#
CAR MISS MARIE 841



BW	WW 10/8	205 wt	NR	365 wt	YR	ADG	Scrotal
68	706	697	109	964	92	1.67	35.5
CED	BW	WW	Milk	YW	SC		
+8	+1.7	+55	+25	+97	+1.04		
Marb	RE	Fat	\$M	\$W	\$F	\$G	\$B
+0.63	+0.04	+0.058	+40	+47	+73	+41	+114

Out of a 1st calf heifer. Granddam is 17 and still in production. High weaning ratio on this top calving ease prospect by True Grit.



HD50K Ranks



Lot	CED%	BW%	WW%	YW%	DMI%	YH%	SC%	HP%	CEM%	MILK%	MW%	MH%	CW%	MARB%	RE%	FAT%	TEND%
1	82	86	5	19	88	7	8	32	68	8	17	11	4	74	20	7	45
2	5	6	14	2	100	29	47	37	11	19	15	27	4	83	25	62	37
3	32	35	24	38	80	30	55	3	22	84	26	57	23	39	34	87	56
4	90	86	41	27	56	26	28	19	31	5	26	21	38	83	50	44	61
5	92	92	5	4	98	3	1	70	63	55	6	6	18	87	3	1	56
6	70	81	3	40	70	22	7	100	34	6	26	12	4	79	51	96	10
7	91	84	5	45	70	30	45	37	10	39	36	23	10	85	49	64	41
8	34	79	28	12	97	29	7	95	77	55	10	14	30	92	54	94	6
9	12	20	43	66	62	26	91	77	2	25	29	9	27	63	30	83	60
10	1	7	31	21	91	63	13	18	55	90	19	45	45	61	34	82	32
11	12	12	32	29	73	60	37	45	96	23	10	21	17	70	57	95	9
12	15	25	6	33	86	3	40	43	19	67	2	1	13	92	14	65	33
13	43	28	19	41	67	12	87	55	60	84	2	3	37	94	29	30	89
14	34	64	20	24	59	29	4	8	16	50	8	10	16	72	3	8	89
15	56	57	24	58	27	8	61	55	57	16	26	24	19	100	34	60	15
16	9	14	13	8	84	8	55	68	95	11	10	6	22	70	64	96	12
17	71	70	13	6	89	7	3	11	26	83	19	14	9	99	30	20	8



HD50K Ranks, continued



Lot	CED%	BW%	WW%	YW%	DMI%	YH%	SC%	HP%	CEM%	MILK%	MW%	MH%	CW%	MARB%	RE%	FAT%	TEND%
18	94	82	15	48	55	20	1	99	29	44	27	14	17	82	79	23	36
19	38	35	33	36	76	71	8	36	64	18	5	10	30	81	49	83	58
20	52	46	34	25	70	25	98	47	99	27	20	19	35	97	61	86	44
21	50	73	54	74	66	17	6	66	34	93	45	37	57	88	67	40	62
22	14	7	69	44	73	66	45	6	87	55	77	89	49	89	18	50	46
23	11	49	22	45	90	50	16	43	34	79	24	63	61	67	22	32	2
24	51	46	50	34	84	16	3	13	32	1	14	6	24	72	91	94	23
25	36	45	43	64	67	17	31	46	2	35	41	38	39	76	50	90	21
26	23	33	17	43	65	19	41	28	6	61	7	4	21	90	21	81	59
27	7	26	10	12	80	35	30	13	8	86	9	31	17	47	22	47	30
28	30	16	25	26	69	77	53	71	68	66	19	51	47	77	19	41	36
29	64	62	23	35	67	57	13	26	83	93	38	43	43	87	12	56	22
30	54	48	24	12	83	50	22	30	84	65	24	21	36	61	25	26	62
31	14	27	55	73	82	19	25	25	69	3	19	16	26	93	34	89	37
32	87	70	51	56	64	26	51	72	50	21	32	25	54	82	57	89	32
33	17	6	82	65	63	58	24	22	19	84	8	13	93	89	82	42	59
34	63	89	15	20	83	9	13	62	7	99	2	2	23	96	1	4	86
35	5	5	43	44	87	71	71	85	16	96	29	63	45	70	15	72	25
36	38	59	7	23	81	8	70	45	51	2	7	6	41	45	52	65	17
37	72	73	52	37	63	73	33	64	99	77	56	85	68	60	37	48	23
38	63	85	7	7	86	7	62	62	41	30	6	10	6	58	23	75	80
39	41	39	82	86	15	56	13	97	29	37	82	68	58	93	3	17	23
40	2	9	74	57	66	79	10	63	15	14	15	20	58	52	68	99	40
41	26	20	18	20	76	14	2	9	76	62	9	20	26	70	70	35	6
42	19	26	31	91	38	56	35	2	16	18	61	52	70	59	63	74	46
43	10	18	32	6	96	37	60	1	5	22	13	9	25	75	32	46	60
44	5	7	58	44	88	59	31	89	36	53	66	57	42	97	65	98	74
45	60	52	6	17	81	34	22	72	99	96	2	17	13	83	15	22	4
46	72	69	28	26	97	10	23	49	85	46	2	3	15	58	12	66	57
47	2	8	68	69	37	69	65	100	66	60	11	46	60	53	9	34	31
48	95	90	29	40	59	44	3	93	99	8	18	34	31	82	70	36	19
49	27	26	75	58	44	98	2	27	23	11	83	98	74	40	34	19	5
50	61	68	9	50	89	4	30	81	5	55	35	19	29	87	68	98	40
51	29	8	69	91	39	64	1	72	23	40	70	63	78	70	43	87	53
52	26	28	54	27	92	70	16	44	49	76	33	44	21	95	34	89	87
53	66	75	35	28	80	56	39	53	40	69	12	50	36	36	38	46	40
54	79	92	14	32	77	82	8	82	25	74	32	51	16	59	49	64	9
55	18	16	23	56	92	64	84	12	17	44	56	57	16	57	28	91	60
56	1	1	87	93	81	78	3	71	84	28	86	85	93	54	88	100	43
57	40	55	24	54	74	21	19	5	55	77	42	33	66	86	68	42	47
58	22	14	80	55	23	74	69	92	73	63	22	39	70	52	75	74	17
59	7	3	74	35	62	97	7	9	72	96	37	81	78	90	51	10	43
60	11	4	69	58	28	55	20	15	53	10	29	41	51	77	38	64	14
61	80	83	18	41	72	18	28	39	20	72	21	19	6	98	87	90	3
62	4	7	86	88	13	96	24	37	21	82	56	83	89	98	47	71	52
63	97	100	23	53	84	31	26	45	3	91	41	63	56	46	66	49	4
64	64	91	12	74	80	37	2	94	7	49	32	44	51	94	16	89	36
65	25	16	46	77	78	32	75	100	98	34	28	20	60	85	89	96	4
66	86	79	27	10	94	37	18	53	18	81	21	36	27	93	62	49	11
67	2	7	93	79	22	87	1	13	43	25	93	96	79	86	89	98	11
68	56	50	24	42	65	3	10	85	31	3	3	10	7	85	63	81	73
69	25	21	36	25	91	46	6	44	28	37	47	29	33	93	40	98	92
70	1	4	40	21	93	83	41	54	22	10	23	74	50	78	41	77	30
71	31	27	87	64	22	73	30	73	53	4	75	86	39	63	86	98	11
72	58	62	58	72	62	92	75	90	50	72	60	95	72	31	83	85	41
73	62	88	19	27	65	14	17	83	91	37	7	3	24	35	38	77	14
74	17	5	78	85	20	22	43	56	84	17	50	42	45	67	67	65	81
75	52	43	24	8	80	89	45	27	98	33	22	69	21	94	12	33	8
76	99	99	79	54	54	91	5	17	96	50	90	97	75	50	18	72	36



HD50K Ranks, continued



Lot	CED%	BW%	WW%	YW%	DMI%	YH%	SC%	HP%	CEM%	MILK%	MW%	MH%	CW%	MARB%	RE%	FAT%	TEND%
77	41	68	18	17	95	6	7	86	92	42	31	15	12	83	61	73	23
78	91	97	22	62	82	28	3	48	2	75	67	47	70	92	55	55	16
79	23	29	11	20	96	12	7	77	25	47	18	23	46	49	42	21	70
80	36	52	73	92	14	82	58	83	90	67	91	79	66	100	73	65	28
81	38	53	46	39	62	19	32	63	100	76	31	33	45	46	69	44	60
82	97	90	2	2	99	2	1	67	34	16	9	2	10	38	51	38	27
83	36	37	65	81	29	94	44	77	17	74	79	93	81	26	60	84	47
84	24	24	18	55	83	4	4	45	62	24	39	6	6	72	35	35	84
85	30	31	24	42	89	18	14	13	90	7	16	21	44	38	70	86	15
86	1	1	83	95	70	91	23	23	5	17	84	89	100	68	40	74	59
87	66	68	19	14	99	23	1	27	30	65	35	34	63	53	46	74	58
88	31	50	21	30	87	5	24	8	40	83	28	8	15	95	39	35	39
89	6	10	70	38	49	38	57	54	57	76	13	10	50	20	99	85	44
90	67	86	31	82	23	17	83	21	46	99	48	35	75	77	77	41	49
91	52	33	78	71	49	59	7	64	35	26	57	89	72	54	75	26	2
92	85	61	41	13	89	27	16	30	26	6	27	13	46	34	88	46	73
93	18	13	95	79	61	73	7	11	30	17	30	27	88	73	42	69	32
94	26	16	72	64	67	83	7	21	14	41	83	69	95	20	30	51	8
95																	
96	33	55	35	34	77	39	10	36	38	16	32	46	48	98	22	5	25
97	27	54	46	71	50	64	9	20	46	19	80	82	57	67	36	40	12
98	5	11	52	74	54	42	33	8	51	28	69	86	60	76	24	85	68
99	45	40	23	18	87	70	21	68	32	54	71	62	62	18	11	67	64
100	90	95	9	18	83	11	8	79	88	80	17	6	30	99	25	71	12
101	80	66	52	59	29	23	33	47	83	23	72	45	67	97	41	78	3
102	99	99	10	12	80	75	43	71	94	95	28	79	20	54	77	48	33
103																	
104	29	59	23	33	71	21	4	7	93	98	10	25	56	90	48	4	12
105	24	38	5	7	95	10	61	44	39	10	3	2	23	26	39	74	3
106	60	87	14	5	83	13	55	17	2	77	11	19	8	65	41	23	25
107	44	47	13	35	69	55	50	78	62	33	50	61	13	81	53	63	43
108	71	89	37	83	41	62	40	32	25	64	68	69	81	52	99	93	20
109	62	63	86	91	50	49	92	48	1	54	81	55	85	96	29	74	59
110	2	2	75	51	57	69	6	22	37	53	52	74	74	75	56	63	13
111	53	68	78	96	3	67	18	88	78	69	89	75	87	22	85	86	69
112	17	20	84	61	48	93	28	46	28	61	87	96	94	65	49	70	6
113	32	52	43	59	31	19	83	13	67	66	24	32	59	99	54	34	40
114	55	87	40	36	81	16	1	53	54	4	27	18	22	94	13	22	17
115	47	68	23	15	90	25	31	50	30	98	3	6	27	92	42	40	86
116	60	47	50	15	84	18	7	100	74	26	25	31	17	98	11	8	17
117	69	81	16	9	89	14	13	16	39	72	26	18	23	93	84	33	31
118	80	85	12	7	90	47	78	80	46	63	8	31	32	96	6	31	8
119	64	73	26	44	89	10	7	68	21	52	3	7	28	80	70	64	17
120	62	73	20	41	77	6	36	24	48	69	19	5	9	83	34	77	26
121	2	12	81	92	59	80	44	2	17	80	69	88	93	38	28	26	21
122	93	96	5	25	99	42	30	83	93	68	5	11	20	86	49	46	66
123	10	27	59	76	63	47	17	45	31	62	65	50	84	68	63	79	9
124	29	38	35	57	82	32	27	32	43	66	19	47	58	77	66	87	37
125	63	60	66	69	73	65	50	10	24	69	59	46	88	92	88	85	4
126	88	87	88	95	8	98	62	90	98	95	90	99	98	100	48	45	27
127	53	53	21	57	43	72	27	46	68	81	47	57	51	95	72	51	1
128	86	96	16	12	87	16	75	66	10	62	4	7	19	78	60	67	62
129	21	41	8	67	58	10	21	7	35	68	19	11	61	86	76	9	52
130	82	94	3	14	94	20	2	48	23	97	4	13	32	82	50	36	69
131	53	60	48	92	55	36	36	65	87	59	82	85	87	88	77	85	60
132	32	51	92	61	54	100	16	74	32	24	92	100	90	77	51	66	23
133	13	23	49	92	29	75	15	31	32	55	47	80	91	94	44	54	39
134	19	31	54	66	36	22	34	34	31	35	12	13	37	39	93	92	25

Connolly Angus Ranch

**Genetics for the Long Run
Production Sale**



Thanks for coming to the sale!





Connelly Angus
1950 Dean Road
Valier, MT 59486

Presorted
FIRST CLASS
US Postage
Paid
Ballyhoo Printing
59457

FIRST CLASS

Connelly Angus Ranch

Tuesday, February 25, 2025



Don Connelly
406/ 279-3569 | 406/899-3826
Matt Connelly
406/ 391-7773

www.connellyangus.com