

The Magic of Scott Piner



Scott Piner...

is an actor, director, performer, and teacher of magic. In his youth, Piner was one of only a select few students from the Midwest chosen to attend the prestigious Tannen's Magic Camp on Long Island, New York. He combines his passion of magic with his interests in theatre, math, business, and storytelling. He is a graduate of the Northern Illinois University School of Theatre and Dance and the Lake Forest Graduate School of Management MBA program. He lives with his wife and daughter in St. Charles, IL and is a member of the St. Charles, IL Noon Rotary Club. Piner performs for parties, events, and fundraisers year-round.



*“Scott, thanks
for making
Jackson's
birthday party
so much fun!!”*

Mission

With the purpose to entertain and create memorable experiences for events, parties, and fundraisers, the Magic of Scott Piner will provide Chicagoland audiences with his unique blend of humor and magical entertainment through intimate, audience interactive performances.

A Few Past Clients & Performance Venues

St. Charles Rotary Club

Scarecrow Fest

Geneva Rotary Club

Alden Gardens of Bloomingdale

St. Charles Arts Council

Improv Playhouse

City of St. Charles IL

Steel Beam Theatre

Presence Pine View Care Center

The House Pub

St. Charles River Corridor Run/Walk

Steel Beam Theatre

Field of Dreams

Waukegan Park District

“Great show. The audience loved it – we want you back for next year.” – Kathy M.



Types of Shows

- **Stand-Up Shows**
 - Ideal for Parties, Events, Fundraisers
 - Comedy, Interactive, customized for audience to help you achieve your event goal
 - :15, :30, :45, and :60 performances
- **Close-Up, Roaming, and Tableside Magic**
 - Ideal for Cocktail hours, restaurants, intimate settings, and events where you need entertainment spanning 2-3 hours
- **Educational**
 - Ideal for classrooms, workshops, trainings
 - Tailored to age and makeup of audience

In the News

Kane County Chronicle



Magician Scott Piner performs a magic trick Sunday with the assistance of Daniella King 7, of St. Charles at Steel Beam Theatre in St. Charles.

Sean King for Shaw Media



Local Headlines

Sun, February 16, 2014 Cloudy, 22°F Forecast

WEDNESDAYS IN FEBRUARY
\$5 CRISPY CHICKEN TENDERS & FRIES!
with purchase of any beverage

Click Here Save \$5 Today!

ColonialCafe.com #colonialcafes

Follow Us!

View photos and stories and interact with us!

Like us on Facebook!

Be the first to receive local breaking news!

Follow us on Twitter!

More ways to connect with us »

m Dress' Saturday in Aurora

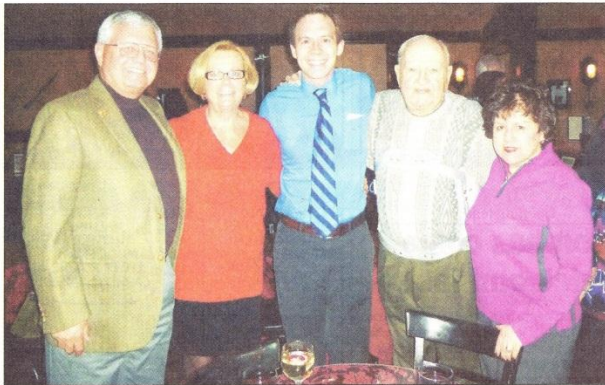
A volunteer seamstress will be present at the April 5 event to help girls decide if a dress would be able to be altered to fit them. Alterations will be the responsibility of the wearer. The event will take place in the Multipurpose Room

on the library's lower level. Because of space limitations, girls may have to wait to enter the room.

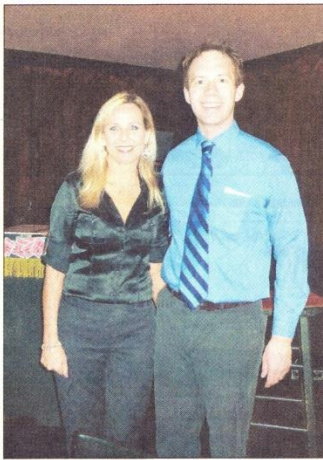
There will be one try-on room available, so the library asks that girls coming for dresses be patient.

For more information about "Say Yes to the Prom Dress," call Amy Roth at (630) 264-4125.

Those who wish to donate dresses can drop them off at any library location through March 28.



PHOTOS COURTESY OF SCOTT PINER



Magical evening

Rotary Club of St. Charles President Bob Brown, above left, with wife Diane, past president, attend the March 9 benefit dinner and magic show with magician Scott Piner, along with Rotary Club of St. Charles member Bob Miller and wife Carol. It was Piner's third year performing for the benefit, which was held in the intimate upper room at Villa Verone, which donates all the food for the event. At left, Kathy Melone, Rotary Club of Geneva member, welcomes Piner, who is Rotary Club of St. Charles member, at the annual "Magical Evening" benefit dinner and silent auction.



PHOTOS COURTESY OF ROTARY CLUB OF ST. CHARLES

St. Charles High sophomore and magician Arman Sangalang will be featured at the benefit magic shows for the Rotary Club of St. Charles.

Magic shows for Valentine's Day to benefit Rotary of St. Charles

Submitted by Rotary Club of St. Charles

Three magic shows featuring the Magic of Arman Sangalang and the Magic of Scott Piner are set to entertain audiences Valentine's Day Weekend, Saturday and Sunday, Feb. 15 and 16, at the Steel Beam Theatre to benefit the Rotary Club of St. Charles.

Arman Sangalang is a sophomore at St. Charles East High School and one of the country's up-and-coming young magicians. He will be joined by St. Charles resident and Rotary Club member Scott Piner. The three shows are family-friendly and all proceeds go to helping the Rotary Club of St. Charles fulfill its mission of "service above self" by supporting a variety of community projects, international projects, and student

scholarships.

Magic of Arman Sangalang with special guest Scott Piner will take the stage at 3 p.m. Saturday, Feb. 15; the Magic of Scott Piner with special guest Arman Sangalang will be featured at 3 and 7:30 p.m. Sunday, Feb. 16.

General admission single tickets and three-show pass tickets are now on sale. Adult tickets are \$20 for one show or \$35 for a three-show pass; senior tickets are \$15 for one show or \$25 for a three show pass, and student tickets are \$10 for one show or \$15 for a three-show pass.

Tickets can be purchased at the door or in advance by calling (847) 280-1601. All shows will take place at the Steel Beam Theatre, 111 W. Main St., St. Charles. For more



Magician and Rotary Club member Scott Piner will perform at the benefit magic shows for the Rotary Club of St. Charles.

information, visit the Rotary Club of St. Charles website at www.rotarystc.org.

Mark your calendar

***CURRENT

THE UNEXPECTED

Magic & Retail: A Surprising Duo in Creating Customer Experiences

by Nicola Letzbach Feyhls



Magic, as defined by Wikipedia, is a performing art that entertains audiences by staging tricks or creating illusions of seemingly impossible feats using natural means. While not quite the same definition of retail, this sounds surprisingly similar to a retailer's responsibility as far as we're concerned. After all, merchants strive to entertain their audiences... aka customers... by merchandising (vs. staging) and creating

displays (vs. illusions) with natural means (their products). With this in mind, we couldn't help but wonder what tricks of the trade retailers could learn from a magician.

Scott Pincer, an Illinois based magician who has a passion for both magic and independent retail, offered his thoughts on how retail and magic go hand in hand.



Contact Info and Social Media Addresses

Phone: 847-280-1601

Email: scott@pinermagic.com **or** scottpiner@live.com

Website: www.pinermagic.com

Facebook: www.facebook.com/scottpinermagic

Twitter: www.twitter.com/pinermagic