

2017 Toys for Tots Wild Horse Course



State Mapping Advisory Com
poration.

Hole 4 Tee Pad

Use short tee pad
since LVC tee
pad still in
development.

Hole 5 Tee Pad

Use short tee pad
since LVC tee
pad still in
development.

Hole 7 Drop Zone

If disc O.B. anywhere on drive (in
water or across cart path), take one-
stroke penalty and next shot from D.Z.
Play normal O.B. rules thereafter.

Hole 10 Drop Zone

If disc not on grass near basket, take
one-stroke penalty and next shot from
D.Z., on cart path (see dots on curb).

Hole 12 Drop Zone

If disc lands in water from tee pad,
take one-stroke penalty and next shot
from the Drop Zone.

18 to 19

Note 4 new holes are played after
playing Hole 18. Make sure you go to
Hole 19, located at the end of the
driving range, near Basket 23.

22 to 23

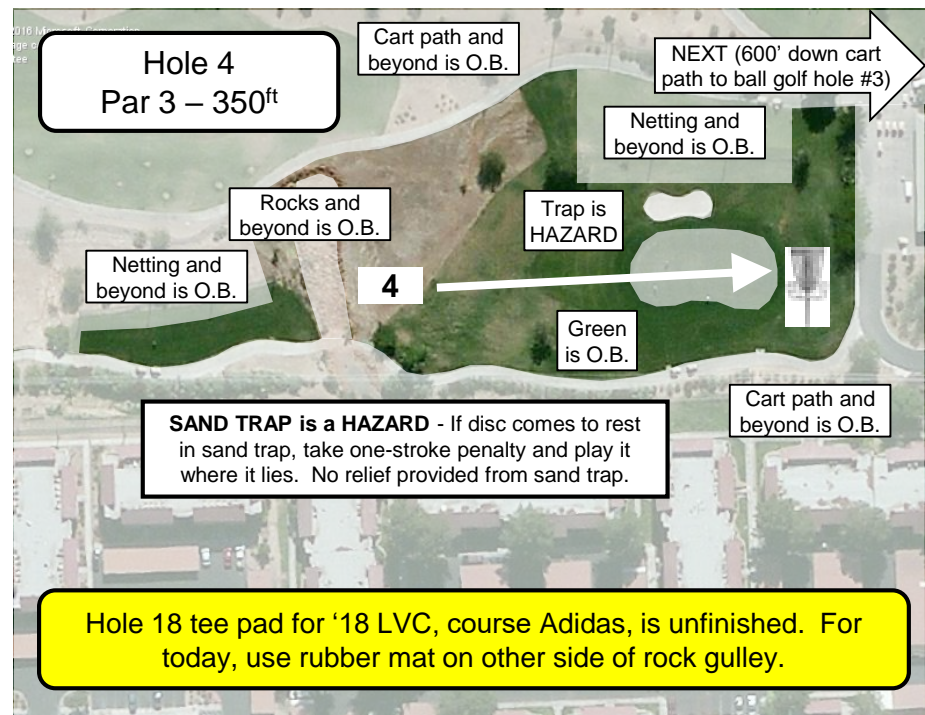
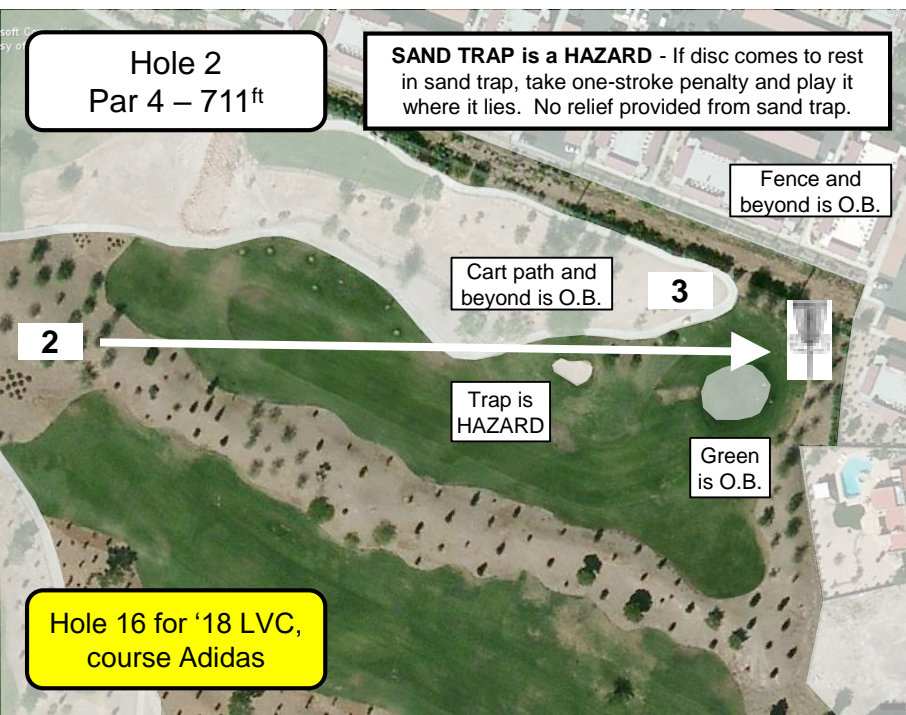
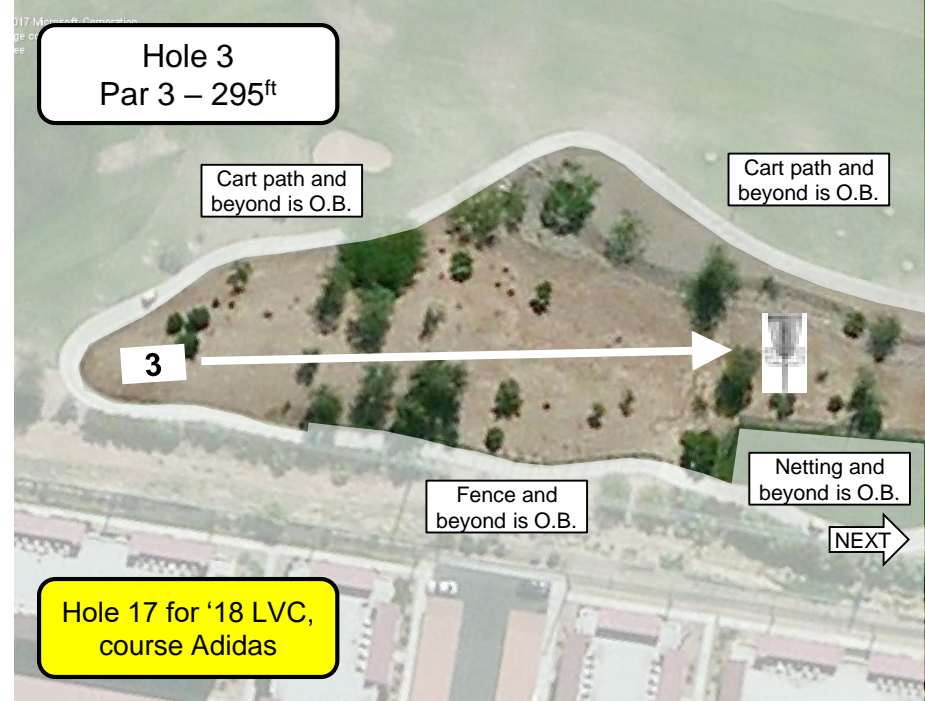
After playing Hole 22, make sure you
go to Hole 23.

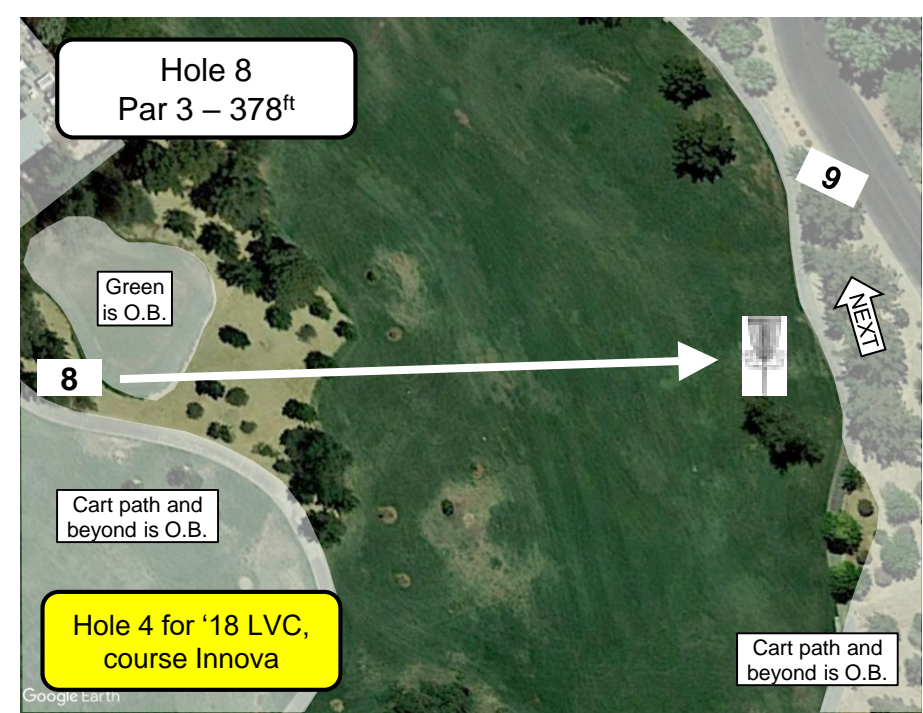
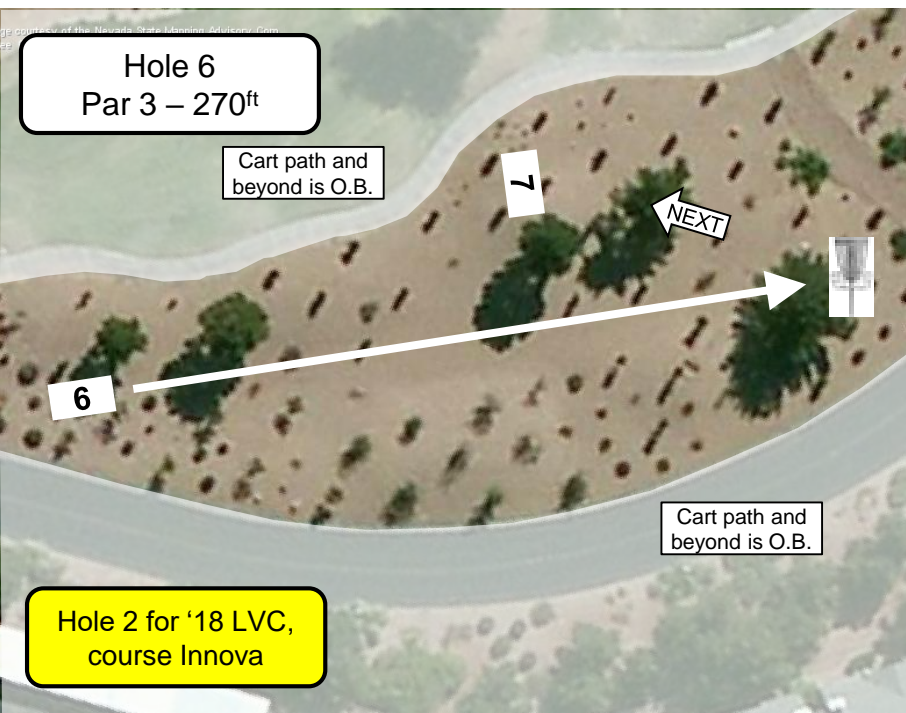
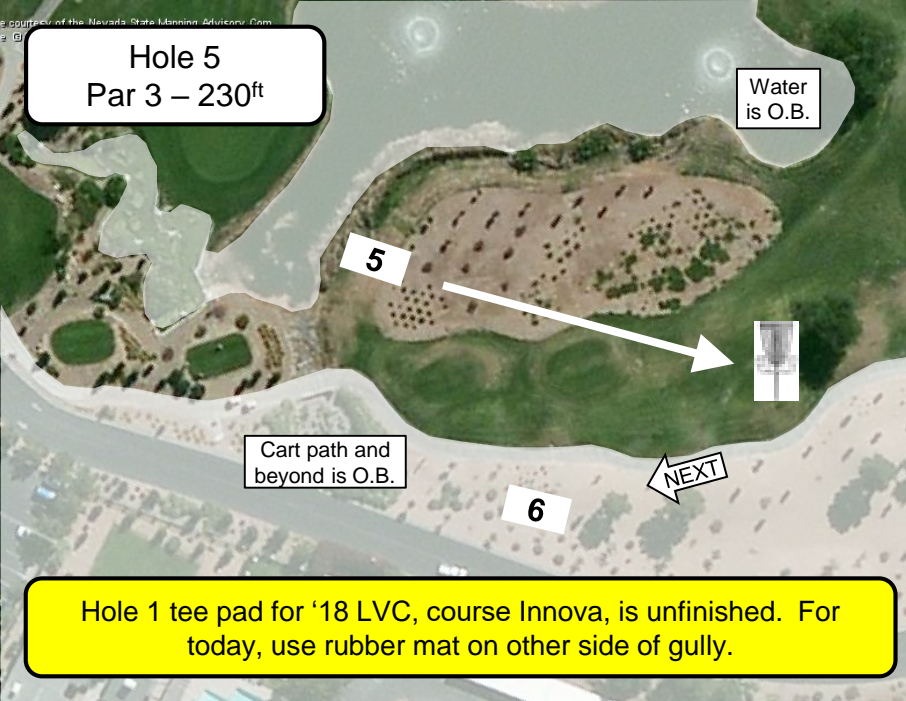


TEE PAD COLORS

Pro - Green
Am - Black
All - Gold







Hole 9
Par 4 – 606ft

SAND TRAP is a HAZARD - If disc comes to rest in sand trap, take one-stroke penalty and play it where it lies. No relief provided from sand trap.

Fence and
beyond is O.B.

Trap is
HAZARD

Green
is O.B.

Cart path and
beyond is O.B.

NEXT

Hole 5 for '18 LVC,
course Innova

DRIVE NEVER IN BOUNDS - If disc never crossed into an in bounds area from tee pad, take one-stroke penalty and next shot from the tee pad.

Hole 10
Par 3 – 220ft

D.Z. is
between
dots on curb

D.Z.

NEXT

10

Not on grass
island is O.B.

ISLAND DROP ZONES - Disc must come to rest on grass near basket. If disc does not come to rest on grass near basket, take one-stroke penalty and next shot from D.Z.

Hole 6 tee pad for '18 LVC, course Innova, is unfinished. For today, use front of grass area next to railroad tie on rocks.

Hole 11
Par 4 – 462ft

SAND TRAP as a HAZARD - If disc comes to rest in sand trap, take one-stroke penalty and play it where it lies. No relief provided from sand trap.

Cart path and
beyond is O.B.

Trap is
HAZARD

Green
is O.B.

Water
is O.B.

Trap is
HAZARD

NEXT

DRIVE NEVER IN BOUNDS - If disc never crossed into an in bounds area from tee pad, take one-stroke penalty and next shot from the tee pad.

Hole 7 for '18 LVC,
course Innova

Hole 12
Par 3 – 417ft

Green
is O.B.

Trap is
HAZARD

Water
is O.B.

Cart path and
beyond is O.B.

13

NEXT

12

D.Z.

DRIVE IN WATER – From PRO tee pad, if disc lands in water, take one-stroke penalty and next shot from the D.Z. / AM Tee Pad.

Hole 8 for '18 LVC,
course Innova

Fence and
beyond is O.B.

Hole 13
Par 4 – 543^{ft}

Cart path and beyond is O.B.

13

14

Play sand trap as a hazard	
-------------------------------	--

Cart path and beyond is O.B.

Hole 9 for '18 LVC,
course Innova

SAND TRAP is a HAZARD - If disc comes to rest in sand trap, take one-stroke penalty and play it where it lies. No relief provided from sand trap.

Hole 14
Par 4 – 783^{ft}

Cart path and beyond is O.B.

Green
is O.B.

Cart path and beyond is O.B.

Trap is
HAZARD

DRIVE NEVER IN BOUNDS - If disc never crossed into an in bounds area from tee pad, take one-stroke penalty and next shot from the tee pad.

Hole 10 for '18 LVC,
course Innova

SAND TRAP is a HAZARD - If disc comes to rest in sand trap, take one-stroke penalty and play it where it lies. No relief provided from sand trap.

Hole 15
Par 3 - 369^{ft}

Trap is
HAZARD

Green
is O.B.

15

Cart path and beyond is O.B.

DRIVE NEVER IN BOUNDS - If disc never crossed into an in bounds area from tee pad, take one-stroke penalty and next shot from the tee pad.

Hole 11 for '18 LVC,
course Innova

SAND TRAP is a **HAZARD** - If disc comes to rest in sand trap, take one-stroke penalty and play it where it lies. No relief provided from sand trap.

Hole 16
Par 3 – 496ft

Trap is
HAZARD

Green
is O.B.

16

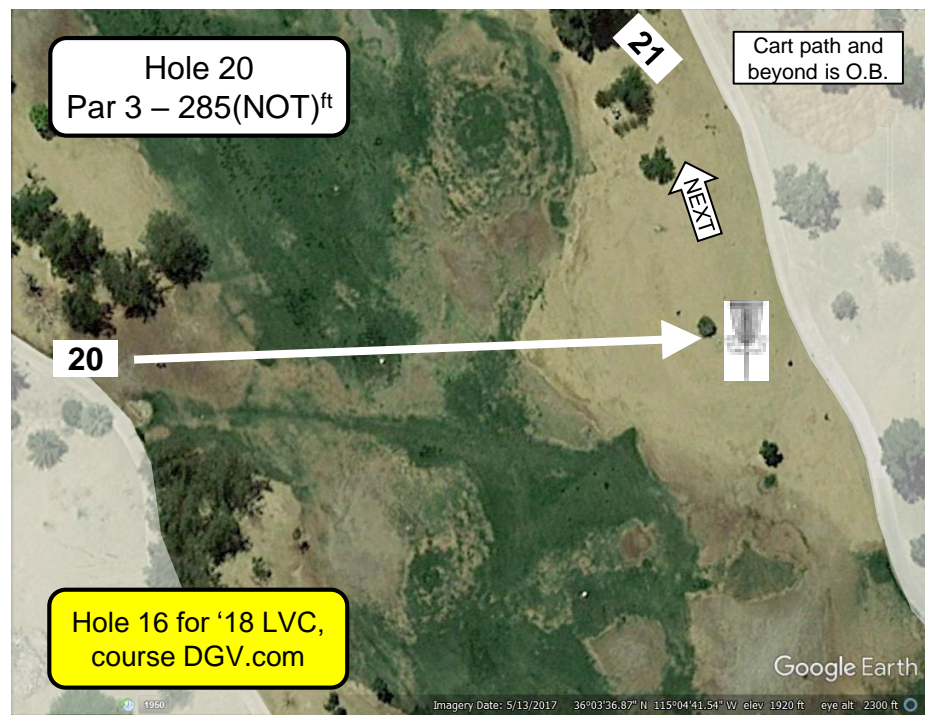
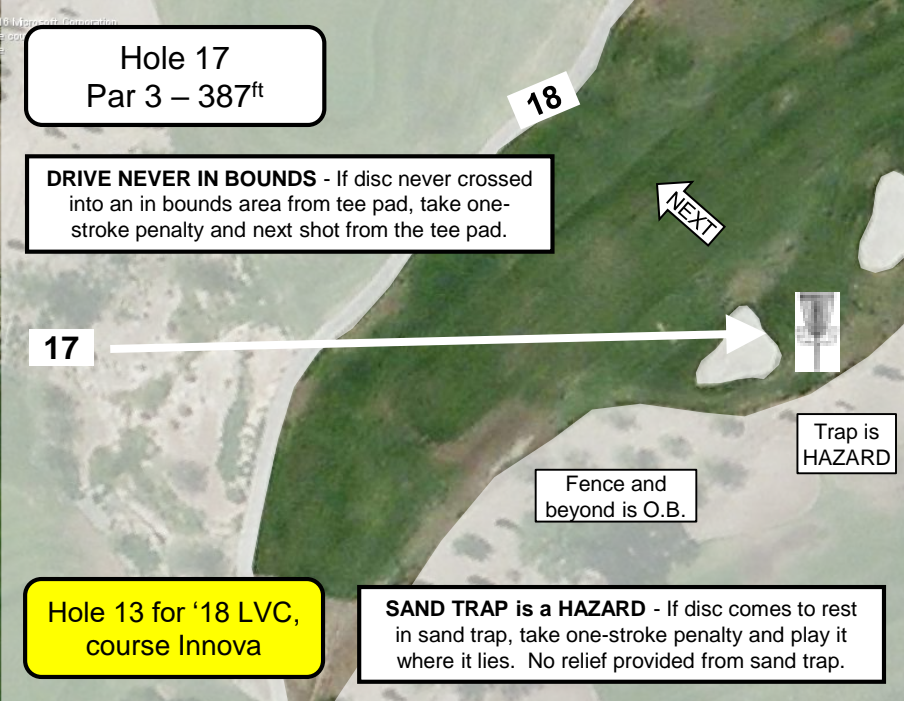
Cart path and beyond is O.B.

DRIVE NEVER IN BOUNDS - If disc never crossed into an in bounds area from tee pad, take one-stroke penalty and next shot from the tee pad.

Hole 12 for '18 LVC,
course Innova

SAND TRAP is a HAZARD - If disc comes to rest in sand trap, take one-stroke penalty and play it where it lies. No relief provided from sand trap.

Cart path and
beyond is O.B.



Hole 21
Par 3 – 300ishft

Cart path and
beyond is O.B.

21

Cart path and
beyond is O.B.

DRIVE NEVER IN BOUNDS - If disc never crossed
into an in bounds area from tee pad, take one-
stroke penalty and next shot from the tee pad.

NEXT

Green
is O.B.

Hole 17 for '18 LVC,
course DGV.com

Google Earth

Hole 23
Par 3 – 459ft

Cart path and
beyond is O.B.

23

Cart path and
beyond is O.B.

DRIVE NEVER IN BOUNDS – From PRO tee pad, if disc
never crosses over cart path near AM tee pad, take one-
stroke penalty and next shot from the D.Z. / AM Tee Pad.

NEXT

Hole 15 for '18 LVC,
course Innova

Hole 22
Par 3 – 471ft

Cart path and
beyond is O.B.

21

Green
is O.B.

NEXT

Go to
the right
tee pad!

Hole 14 for '18 LVC,
course DGV.com

Google Earth

Hole 24
Par 3 – 765ft

DRIVE NEVER IN BOUNDS - If disc never crossed
into an in bounds area from tee pad, take one-
stroke penalty and next shot from the tee pad.

Cart path and
beyond is O.B.

Green
is O.B.

24

Water
is O.B.

Hole 16 for '18 LVC,
course Innova

Hole 25
Par 3 – 507ft

DRIVE NEVER IN BOUNDS - If disc never crossed into an in bounds area from tee pad, take one-stroke penalty and next shot from the tee pad.

Cart path and beyond is O.B.

25

26

Green is O.B.

Water/rocks and beyond is O.B.

Hole 17 for '18 LVC, course Innova. For today, use flags in corner as tee pad.

Hole 26
Par 4 – 700ft

Cart path and beyond is O.B. left of where curbing starts

Cart path and beyond is O.B.

Water/rocks and beyond is O.B.

Green is O.B.

Water/rocks and beyond is O.B.

Cart path and beyond is O.B. right of where grass starts on right-side of cart path

Hole 18 for '18 LVC, course Innova

DRIVE NEVER IN BOUNDS - If disc never crossed into an in bounds area from tee pad, take one-stroke penalty and next shot from the tee pad.