



2021

## CONSERVATION AUTO TOUR

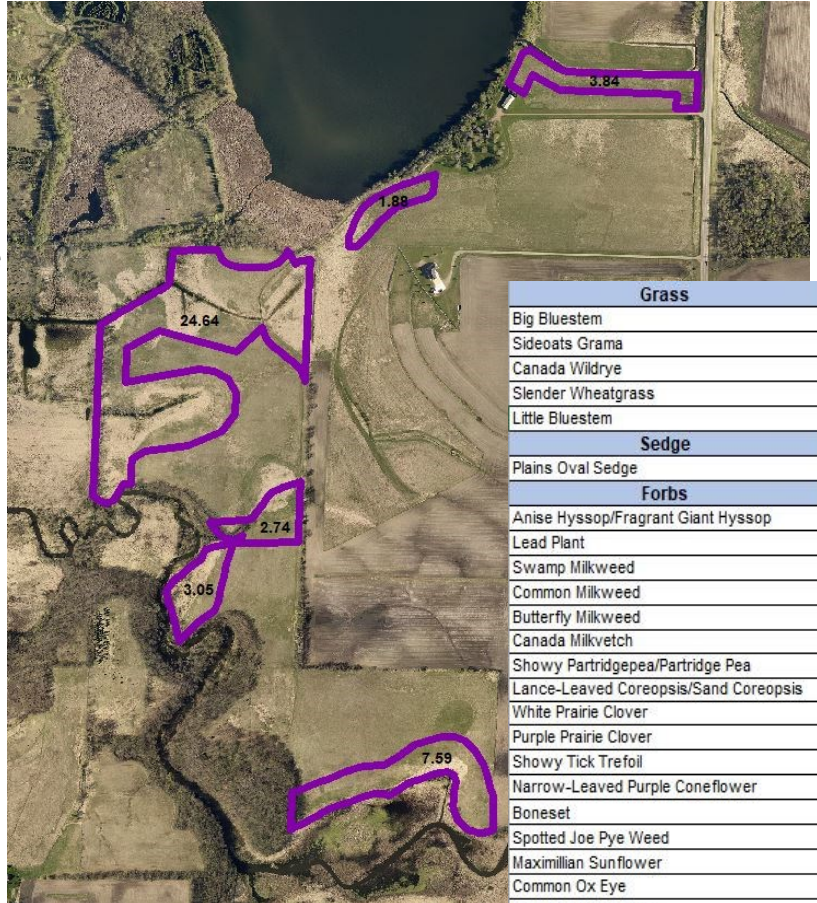
### SITE 5: RIM POLLINATOR PLANTING

In 2018 Pheasants Forever received funding from the LCCMR to provide funds to local government groups to enhance permanently protected land. The goal of the project was to increase forb biodiversity for pollinator habitat.

In 2019 the Le Sueur County Soil & Water office applied for and received funds from Pheasants Forever to enhance a 43.74 acre RIM easement that was established in 2000. The site was dominated by Smooth Brome and Reed Canary Grass and had little biodiversity.

In the Spring of 2019 the stands of Smooth Brome and Reed Canary grass were sprayed with glyphosate. That following summer the land operators were allowed to farm soy beans with chemical restrictions to create an optimal seed bed .

In the Fall of 2019 after the beans were harvested, Zumbro Valley Forestry LLC seeded the RIM easement with a pollinator mix.



Above: Map of 43.74 acres seeded with pollinator seed mix. Located in Killenny Township Section 5.

Right: List of grass, sedge and forb species planted on easement.

Left: Original vegetation on RIM easement

